

**DEPARTMENT OF REVENUE
CHILD SUPPORT SERVICES DIVISION
FY17 Governor's Budget**

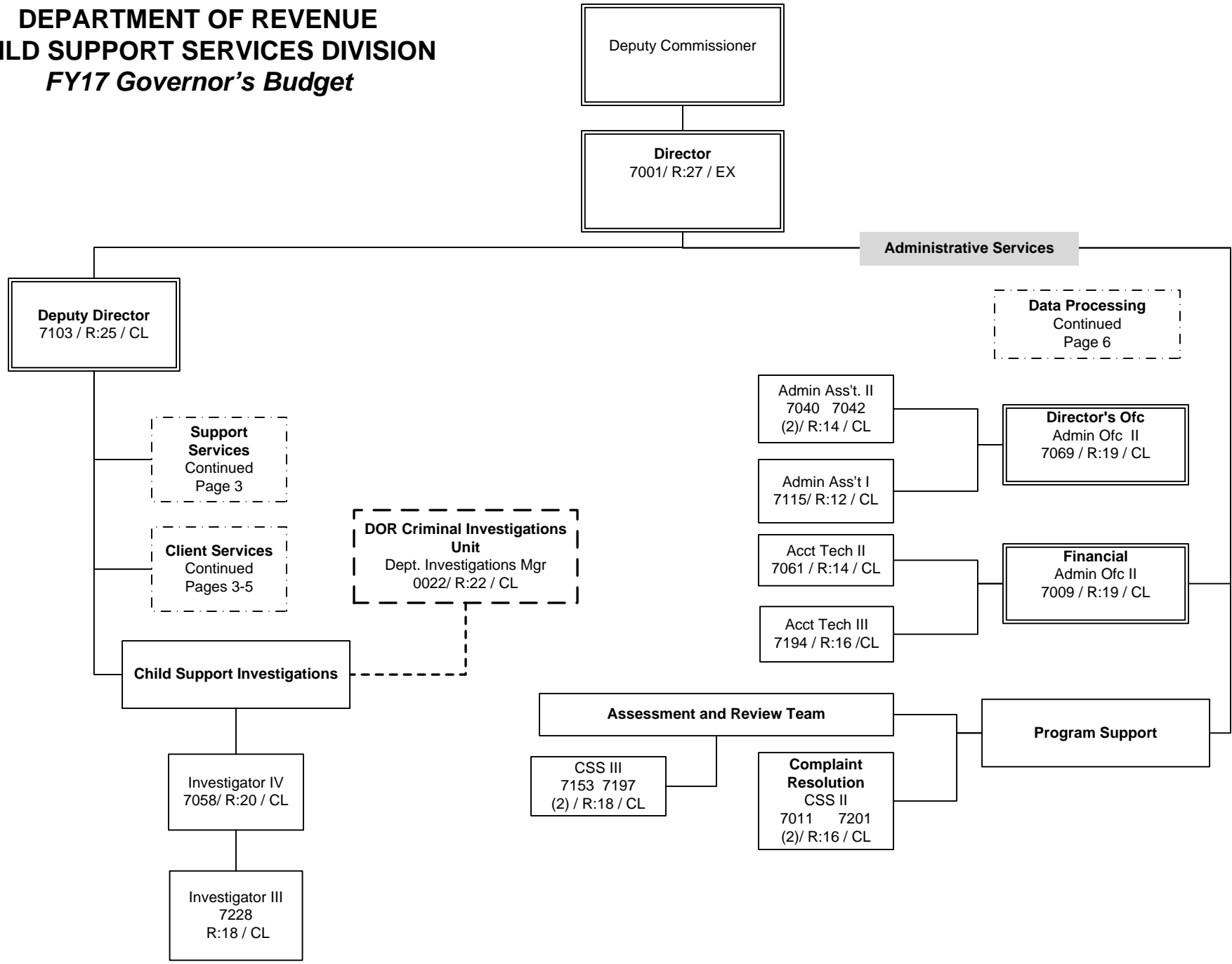
ORGANIZATIONAL CHART

Includes:
Titles, PCN, Range and Class

ANC	FBKS	JNU	PD TOTAL	
222	2	1	225	

Class Cod	AKPAY Code	Position Title	Range	Dept	Class	#'s		Class Cod	AKPAY Code	Position Title	Range	Dept	Class	#'s
PA0112	P1901	Division Director	27	4	EX	1		PC0563	P1292	Audit & Review Analyst II	21	4	CL	0
PA0014	K0054	Deputy Director	25	4	EX	1		PF0105	P4153	Child Support Manager	21	4	CL	0
PB0213	P1206	Accountant III	18	4	CL	1		PF0103	P4152	Child Support Specialist III	18	4	CL	6
PB0208	P1235	Accounting Tech IV	18	4	CL	1		PF0102	P4151	Child Support Specialist II	16	4	CL	22
PB0207	P1212	Accounting Tech III	16	4	CL	6		PF0101	P4150	Child Support Specialist I	14	4	CL	91
PB0206	P1211	Accounting Tech II	14	4	CL	15		PB0417	P1642	Data Processing Mgr II	23	4	CL	1
PB0205	P1210	Accounting Tech I	12	4	CL	10		PI0434	P4469	Investigator IV	20	4	CL	1
PB0202	P1203	Accounting Clk	10	4	CL	5		PI0433	P7768	Investigator III	18	4	CL	1
PB0155	K0020	Administrative Officer II	19	4	CL	2		PL0823	P9813	Microfilm/Imaging Opr III	14	4	CL	1
PB0152	K0018	Administrative Assistant II	14	4	CL	2		PL0822	P9812	Microfilm/Imaging Opr II	12	4	CL	1
PB0151	K0017	Administrative Assistant I	12	4	CL	1		PL0821	P9811	Microfilm/Imaging Opr I	10	4	CL	9
PB0405	P1625	Analyst Programmer V	22	4	CL	1		PB0433	P1633	Micro Network Spec I	18	4	CL	1
PB0404	P1624	Analyst Programmer IV	20	4	CL	5		PB0432	P1632	Micro Network Tech II	16	4	CL	2
PB0403	P1623	Analyst Programmer III	18	4	CL	2		PB0103	P1135	Office Assistant II	10	4	CL	36

**DEPARTMENT OF REVENUE
CHILD SUPPORT SERVICES DIVISION
FY17 Governor's Budget**

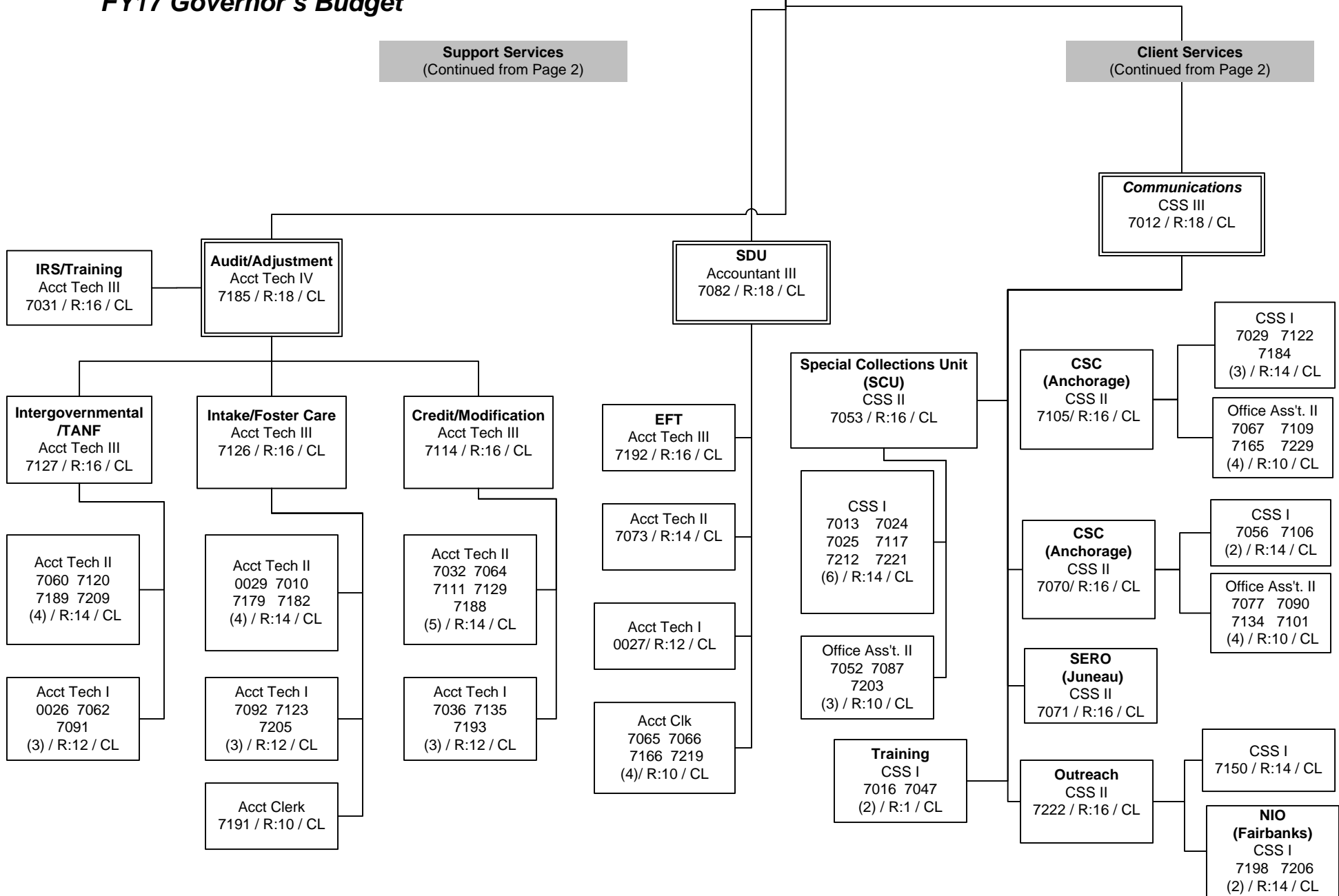


**DEPARTMENT OF REVENUE
CHILD SUPPORT SERVICES DIVISION
FY17 Governor's Budget**

Deputy Director
(Continued from Page 2)

Support Services
(Continued from Page 2)

Client Services
(Continued from Page 2)



**DEPARTMENT OF REVENUE
CHILD SUPPORT SERVICES DIVISION
FY17 Governor's Budget**

Deputy Director
(Continued from Page 2)

Client Services
(Continued from Page 3)

Enforcement
CSS III
7063 / R:18 / CL

Intergovernmental
CSS III
7155 / R:18 / CL

Domestic Enf
CSS II
0028 / R:16 / CL

Domestic Enf
CSS II
7004 / R:16 / CL

Domestic Enf
CSS II
7022 / R:16 / CL

Domestic Enf
CSS II
7124 / R:16 / CL

Enforcement
CSS II
7152 / R:16 / CL

Enforcement
CSS II
7187 / R:16 / CL

**ENF Responding/
Initiating**
CSS II
7039 / R:16 / CL

CSS I
7078 7081
7148 7204
7217
(5) / R:14 / CL

CSS I
7038 7049
7075 7108
7144 7186
7223 7224
(8) / R:14 / CL

CSS I
7100 7137
7141 7159
7178 7181
7202
(7) / R:14 / CL

CSS I
7017 7028
7080 7089
7145 7128
7132 7146
7213
(9) / R:14 / CL

CSS I
7085 7086
7088 7163
7170 7173
(6) / R:14 / CL

CSS I
7027 7116
7174 7208
7218 7231
(6) / R:14 / CL

CSS I
7014 7041
7048 7050
7161 7171
7215
(7) / R:14 / CL

Office Ass't. II
7026 7076
7099 7133
(4) / R:8 / CL

Office Ass't. II
7015 / R:10 / CL

Office Ass't. II
7094 7130
(2) / R:10 / CL

Office Ass't. II
7136 / R:10 / CL

Office Ass't. II
7098 7034
7176
(3) / R:10 / CL

Office Ass't. II
7023 7072
7113
(3) / R:10 / CL

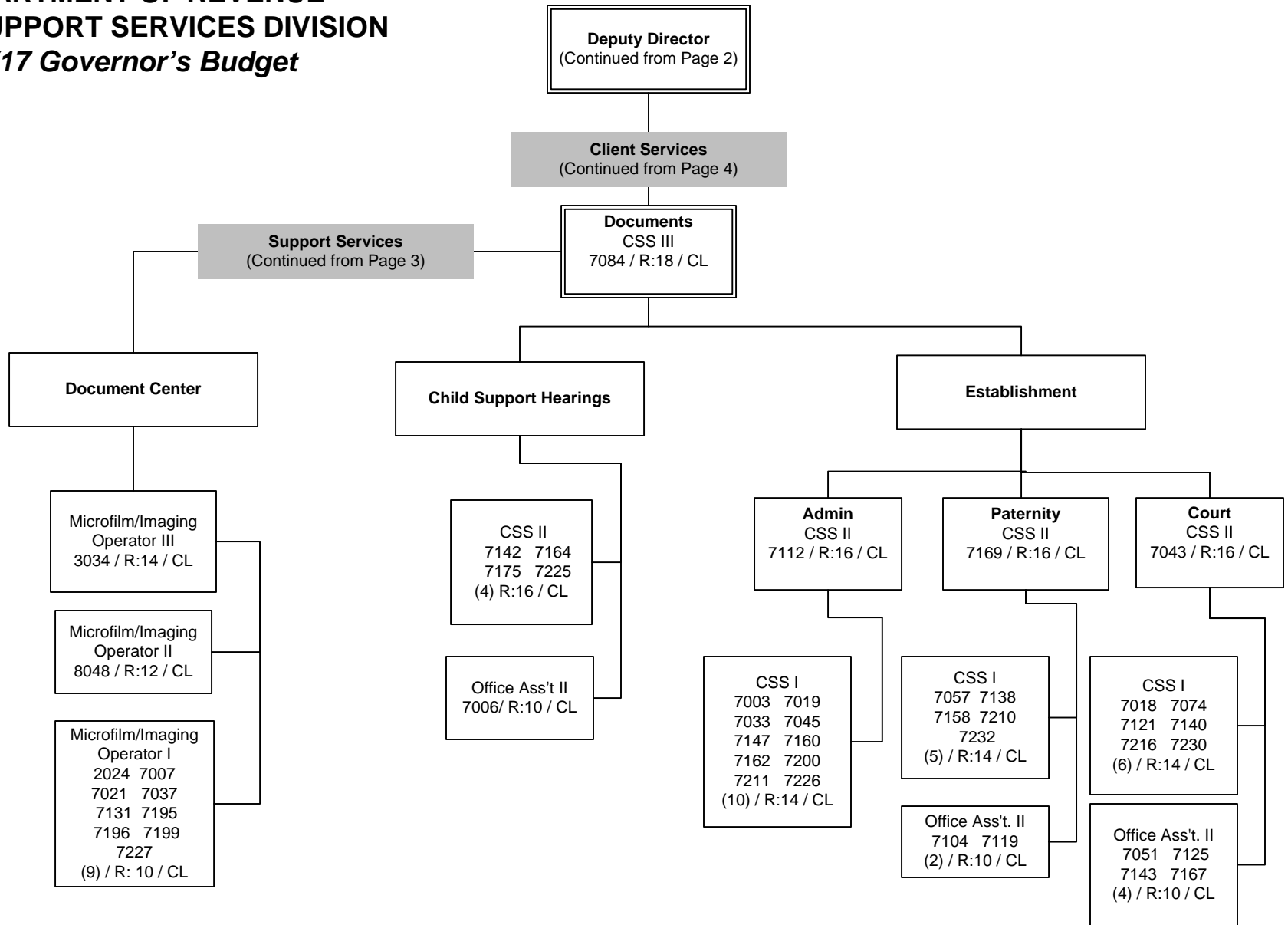
Office Ass't. II
7177
(1) / R:10 / CL

Office Ass't. II
7030
7044 7102
(3) / R:10 / CL

CSS I
7054 7055
7139 7172
7183 7214
(6) / R:14 / CL

**ENF Intake/Foster
Care**
CSS II
7020 / R:16 / CL

**DEPARTMENT OF REVENUE
CHILD SUPPORT SERVICES DIVISION
FY17 Governor's Budget**



**DEPARTMENT OF REVENUE
CHILD SUPPORT SERVICES DIVISION
FY17 Governor's Budget**

