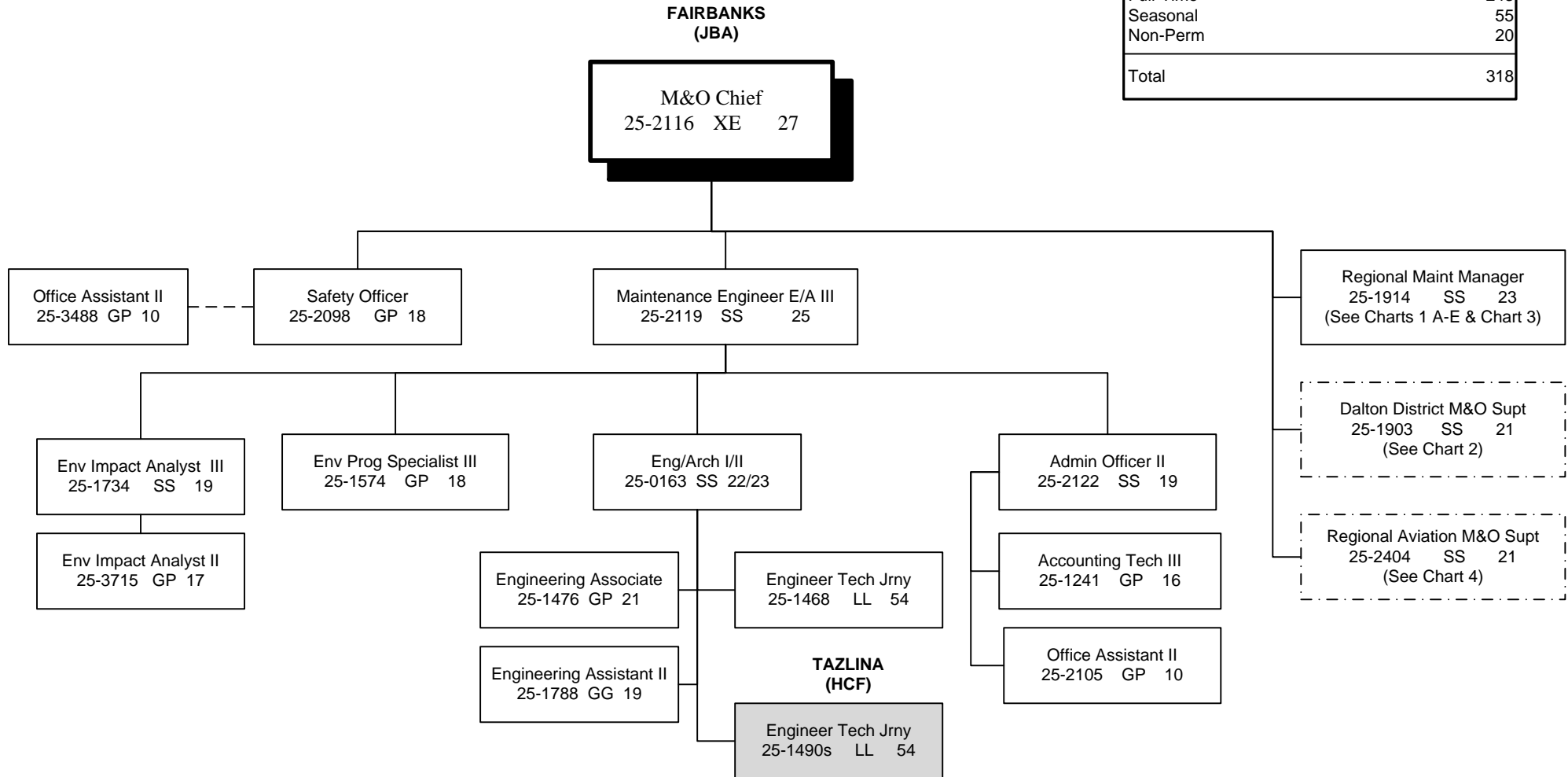


**FY2017 GOVERNOR'S
HIGHWAYS, AVIATION AND FACILITIES (408)
NORTHERN REGION HIGHWAYS & AVIATION (2068)
ADMINISTRATION/ENGINEERING, CHART 1**

NORTHERN REGION HIGHWAYS & AVIATION	
Positions	Total
Full-Time	243
Seasonal	55
Non-Perm	20
Total	318



**FY2017 GOVERNOR'S
HIGHWAYS, AVIATION AND FACILITIES (408)
NORTHERN REGION HIGHWAYS & AVIATION
FAIRBANKS DISTRICT, CHART 1A**

M&O Superintendent
25-3385 SS 21

Admin Assistant III
25-1905 GG 15

Regional Maintenance Manager
25-1914 SS 23

Accounting Tech I
25-2120 GP 12

**FAIRBANKS
(JBA)**

Equipment Operator (F2)
25-1919 LL 50

**MONTANA CREEK
(JME)**

Equipment Operator (L)
25-3676 LL 52

Equipment Operator (J2)
25-1934 LL 53

Equipment Operator (J2)
25-1964 LL 53

Equipment Operator (J2)
25-2049 LL 53

Equipment Operator (J2)
25-3673 LL 53

Equipment Operator (J2)
25-3675 LL 53

Equipment Operator (F1)
25-1927 LL 51

Equipment Operator (J2)
25-1917 LL 53

Equipment Operator (J2)
25-1924 LL 53

Equipment Operator (J2)
25-1926 LL 53

Equipment Operator (J2)
25-3663 LL 53

Equipment Operator (SJ2/
J2)
25-1681 LL 54/56

Equipment Operator (J1)
25-1918 LL 54

Equipment Operator (J1)
25-2079 LL 54

Equipment Operator (F1)
25-1929 LL 51

Equipment Operator (J2)
25-1458 LL 53

Equipment Operator (J2)
25-1930 LL 53

Equipment Operator (J2)
25-1936 LL 53

Equipment Operator (J2)
25-1943 LL 53

Equipment Operator (J2)
25-1979 LL 53

Equipment Operator (J2)
25-1989 LL 53

Equipment Operator (J1)
25-1928 LL 54

Equipment Operator (J1)
25-1933 LL 54

Equipment Operator (J1)
25-1944 LL 54

Equipment Operator
SJII/J1)
25-2017 LL 54/56

Equipment Operator (J1)
25-1946 LL 54

Equipment Operator (J1)
25-2022 LL 54

Equipment Operator (J1)
25-2077 LL 54

Equipment Operator (J1)
25-2081 LL 54

Equipment Operator (J2)
25-1931 LL 53

**FAIRBANKS
TRAFFIC (JBA)**

Maint Spec TCES (J2)
25-2075 LL 51

Maint Spec TCES (J2)
25-1916 LL 51

Maint Spec TCES (J2)
25-1968 LL 51

Equipment Operator (F1)
25-1920 LL 51

Equipment Operator (J2)
25-1915 LL 53

Equipment Operator (J2)
25-1937 LL 53

Equipment Operator (J2)
25-1941 LL 53

Equipment Operator (J2)
25-1986 LL 53

Equipment Operator (J2)
25-2071 LL 53

Equipment Operator (J2)
25-2088 LL 53

Equipment Operator (J2)
25-1996 LL 53

Equipment Operator (J1)
25-2072 LL 54

Equipment Operator (J1)
25-1973s LL 54

FAIRBANKS SIGNS (JBA)

Equipment Operator (J2)
25-1670 LL 53

Equipment Operator (J2)
25-1935 LL 53

BIRCH LAKE (JJD)

Equipment Operator (J2)
25-1975 LL 53

Equipment Operator (J2)
25-3437 LL 53

Equipment Operator (J1)
25-1562 LL 54

Equipment Operator (SJ1)
25-1940s LL 58

Equipment Operator (SJ1)
25-2074s LL 58

Equipment Operator (SJ1)
25N09042 LL 58

Equipment Operator (SJ1)
25N09043 LL 58

Equipment Operator (SJ1)
25N09044 LL 58

**FY2017 GOVERNOR'S
HIGHWAYS, AVIATION AND FACILITIES (408)
NORTHERN REGION HIGHWAYS & AVIATION (2068)
DENALI DISTRICT, CHART 1B**

**FAIRBANKS
(JBA)**

Denali M&O Superintendent
25-1902 SS 21

Admin Assistant III
25-1954 GP 15

Admin Assistant II
25-2243 GP 14

Regional Maintenance Manager
25-1914 SS 23

**CANTWELL
(HJI)**

Equipment Operator (F1)
25-1952 LL 51

Equipment Operator (J2)
25-1921 LL 53

Equipment Operator (J2)
25-1991 LL 53

Equipment Operator (J2)
25-1999 LL 53

Equipment Operator (J2)
25-2000 LL 53

Equipment Operator (J2)
25-2001 LL 53

Equipment Operator (J2)
25-2025s LL 53

Equipment Operator (J2)
25-3610s LL 53

Equipment Operator (J1)
25-1706s LL 58

**HEALY
(HJA)**

Equipment Operator (J3/L)
25-1995 LL 52

Equipment Operator (J2)
25-1997 LL 53

Equipment Operator (J2)
25-1998s LL 53

Equipment Operator (J1)
25-1961s LL 54

Equipment Operator (J1)
25-1472s LL 54

Equipment Operator (SJ1)
25N10060 LL 58

**NENANA
(JBM)**

Equipment Operator (L)
25-1990 LL 52

Equipment Operator (J2)
25-1955 LL 53

Equipment Operator (J2)
25-1993 LL 53

Equipment Operator (J2)
25-2087 LL 53

Equipment Operator (J1)
25-2037s LL 54

Equipment Operator (J1)
25-1942s LL 54

Equipment Operator (SJ2)
25-2018s LL 56

**NR BRIDGE CREW -
FAIRBANKS
(JBA)**

Equipment Operator (F1)
25-1947 LL 51

Equipment Operator (SJ1)
25N09040 LL 58

Equipment Operator (SJ1)
25N09041 LL 58

**GALENA
(HYC)**

Equip Operator Foreman I
25-1908 LL 51

Equipment Operator (J2)
25-1909 LL 53

Equipment Operator (J2)
25-1910s LL 53

**INTERIOR AVIATION
FAIRBANKS
(JBA)**

Equipment Operator Lead (J3)
25-3554 LL 52

**FY2017 GOVERNOR'S
HIGHWAYS, AVIATION AND FACILITIES (408)
NORTHERN REGION HIGHWAYS & AVIATION
TOK DISTRICT, CHART 1C**

Regional Maintenance Manager
25-1914 SS 23

**TOK
(HEB)**

Tok M&O Superintendent
25-1901 SS 21

Admin Assistant III
25-1904 GP 15

Office Assistant II
25-3489s GP 10

**DELTA
(JJB)**

- Equipment Operator (F1)
25-1947 LL 51
- Equipment Operator (J2)
25-1948 LL 53
- Equipment Operator (J2)
25-1949 LL 53
- Equipment Operator (J2)
25-1950 LL 53
- Equipment Operator (J2)
25-1951 LL 53
- Equipment Operator (J2)
25-2199 LL 53
- Equipment Operator (J1)
25-1938s LL 54
- Equipment Operator (SJ2)
25-1967s LL 56

**NORTHWAY
(HEC)**

- Equipment Operator (J2)
25-2005 LL 53
- Equipment Operator (J2)
25-3674 LL 53

EAGLE (JKA)

- Equipment Operator (J2)
25-2013 LL 53
- Equipment Operator (J2)
25-2014s LL 53

**O'BRIEN
(JKB)**

- Equipment Operator (J2)
25-2011s LL 53
- Equipment Operator (J2)
25-2012s LL 53
- Equipment Operator (SJ2)
25-1978s LL 56

**SOUTH FORK
(JKF)**

- Equipment Operator (Flex J2)
25-2009s LL 53
- Equipment Operator (J2)
25-2010s LL 53
- Equipment Operator (J1)
25-1983s LL 54

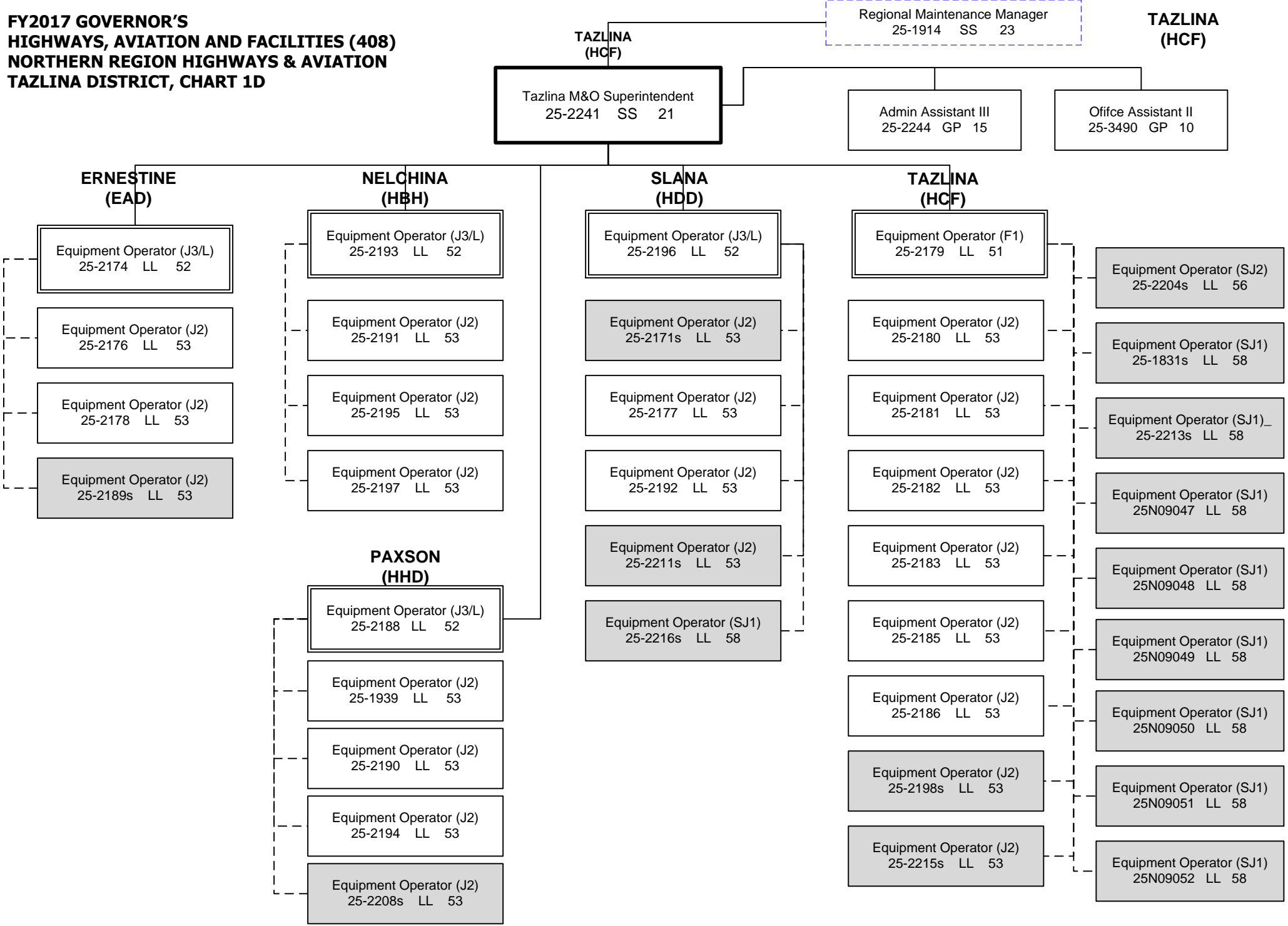
**TOK
(HEB)**

- Equipment Operator (F1)
25-1957 LL 51
- Equipment Operator (J2)
25-1958 LL 53
- Equipment Operator (J2)
25-1959s LL 53
- Equipment Operator (J2)
25-1962 LL 53
- Equipment Operator (J2)
25-1977 LL 53
- Equipment Operator (J2)
25-1992 LL 53
- Equipment Operator (J2)
25-2089 LL 53
- Equipment Operator (J2)
25-3523s LL 53
- Equipment Operator (J1)
25-1966s LL 54
- Equipment Operator (SJ2)
25-1994s LL 56

**TRIMS
(HHH)**

- Equipment Operator (J3/L)
25-3428 LL 52
- Equipment Operator (J2)
25-1911 LL 53
- Equipment Operator (J2)
25-2083s LL 53
- Equipment Operator (J2)
25-2085s LL 53

**FY2017 GOVERNOR'S
HIGHWAYS, AVIATION AND FACILITIES (408)
NORTHERN REGION HIGHWAYS & AVIATION
TAZLINA DISTRICT, CHART 1D**



TAZLINA (HCF)

Regional Maintenance Manager
25-1914 SS 23

TAZLINA (HCF)

Tazlina M&O Superintendent
25-2241 SS 21

Admin Assistant III
25-2244 GP 15

Office Assistant II
25-3490 GP 10

ERNESTINE (EAD)

NELCHINA (HBH)

SLANA (HDD)

TAZLINA (HCF)

Equipment Operator (J3/L)
25-2174 LL 52

Equipment Operator (J2)
25-2176 LL 53

Equipment Operator (J2)
25-2178 LL 53

Equipment Operator (J2)
25-2189s LL 53

Equipment Operator (J3/L)
25-2193 LL 52

Equipment Operator (J2)
25-2191 LL 53

Equipment Operator (J2)
25-2195 LL 53

Equipment Operator (J2)
25-2197 LL 53

PAXSON (HDD)

Equipment Operator (J3/L)
25-2188 LL 52

Equipment Operator (J2)
25-1939 LL 53

Equipment Operator (J2)
25-2190 LL 53

Equipment Operator (J2)
25-2194 LL 53

Equipment Operator (J2)
25-2208s LL 53

Equipment Operator (J3/L)
25-2196 LL 52

Equipment Operator (J2)
25-2171s LL 53

Equipment Operator (J2)
25-2177 LL 53

Equipment Operator (J2)
25-2192 LL 53

Equipment Operator (J2)
25-2211s LL 53

Equipment Operator (SJ1)
25-2216s LL 58

Equipment Operator (F1)
25-2179 LL 51

Equipment Operator (J2)
25-2180 LL 53

Equipment Operator (J2)
25-2181 LL 53

Equipment Operator (J2)
25-2182 LL 53

Equipment Operator (J2)
25-2183 LL 53

Equipment Operator (J2)
25-2185 LL 53

Equipment Operator (J2)
25-2186 LL 53

Equipment Operator (J2)
25-2198s LL 53

Equipment Operator (J2)
25-2215s LL 53

Equipment Operator (SJ2)
25-2204s LL 56

Equipment Operator (SJ1)
25-1831s LL 58

Equipment Operator (SJ1)_
25-2213s LL 58

Equipment Operator (SJ1)
25N09047 LL 58

Equipment Operator (SJ1)
25N09048 LL 58

Equipment Operator (SJ1)
25N09049 LL 58

Equipment Operator (SJ1)
25N09050 LL 58

Equipment Operator (SJ1)
25N09051 LL 58

Equipment Operator (SJ1)
25N09052 LL 58

**FY2017 GOVERNOR'S
HIGHWAYS, AVIATION AND FACILITIES (408)
NORTHERN REGION HIGHWAYS & AVIATION (2068)
VALDEZ DISTRICT, CHART 1E**

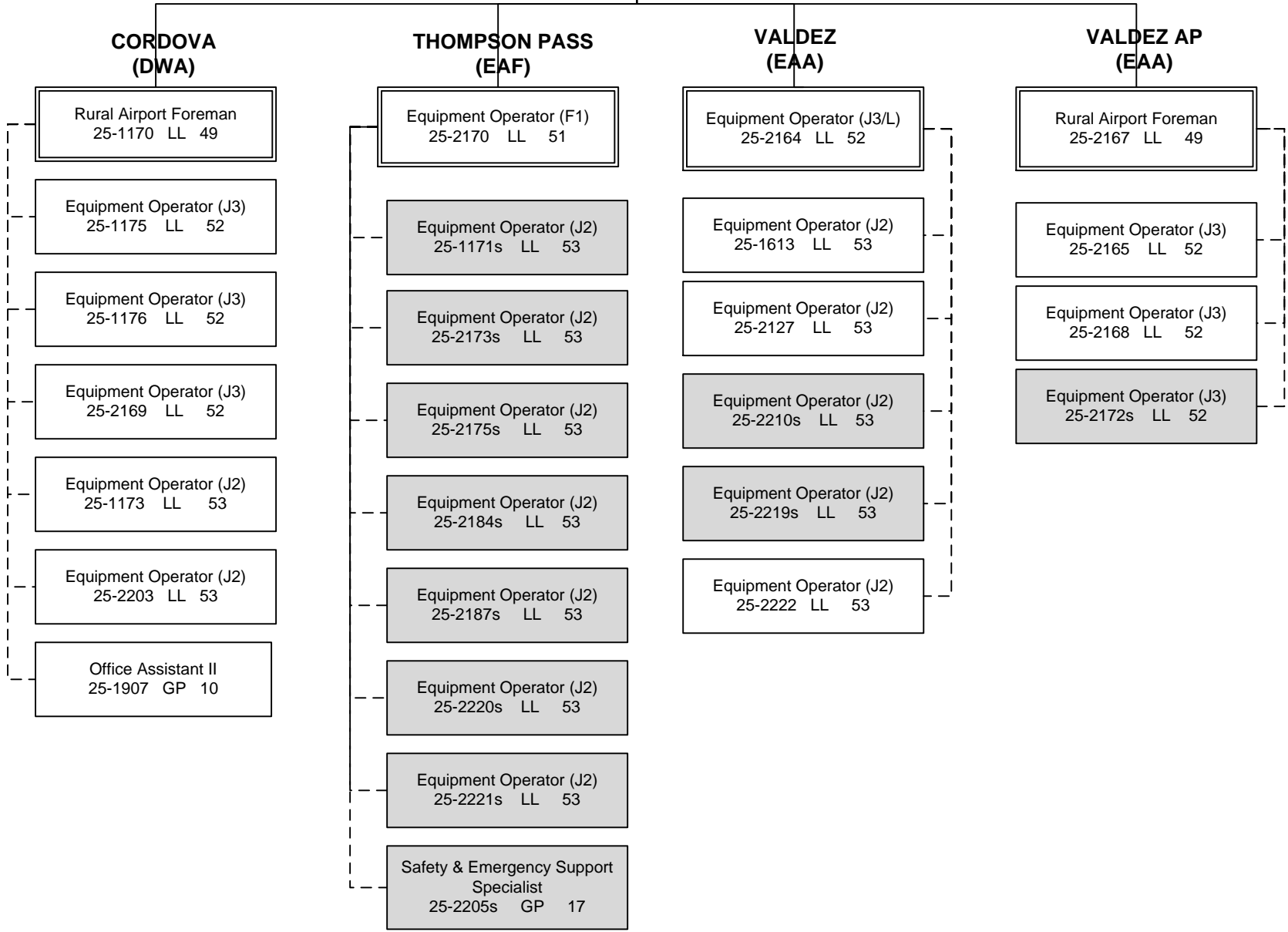
Regional Maintenance Manager
25-1914 SS 23

**VALDEZ
(EAA)**

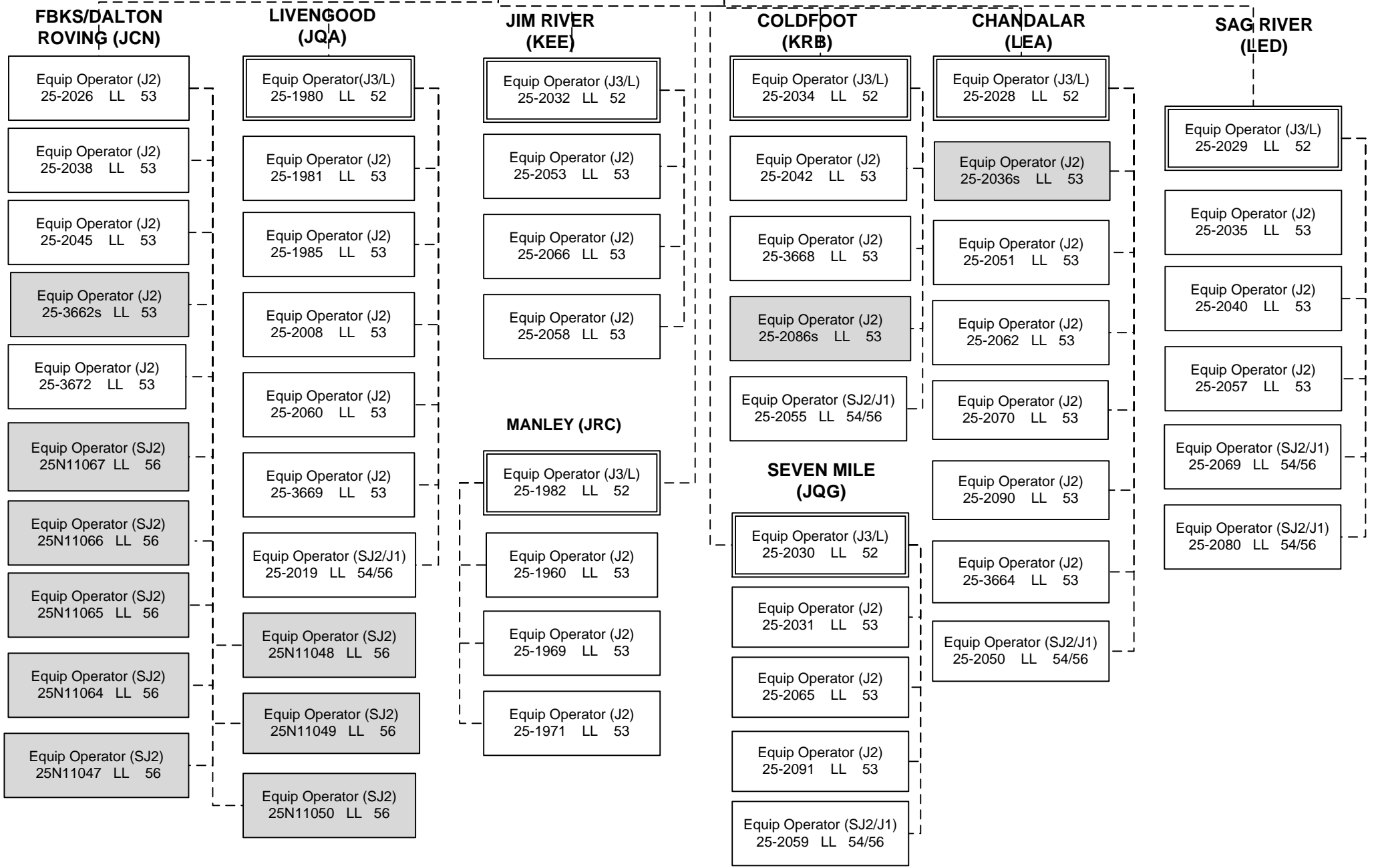
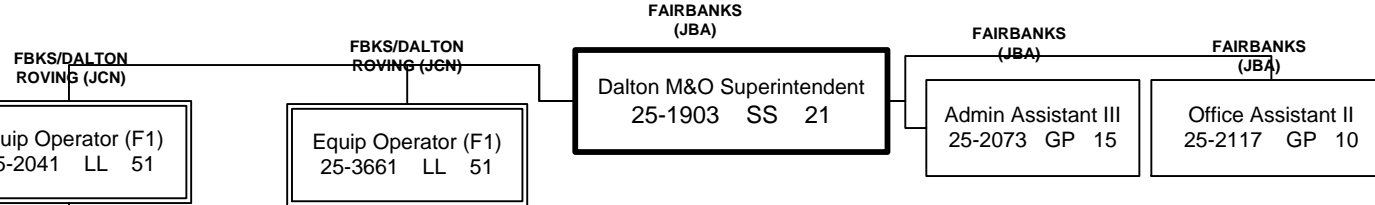
M&O Superintendent
25-2245 SS 21

Admin Assistant III
25-2232 GP 15

Office Assistant II
25-2242 GP 10



**FY2017 GOVERNOR'S
HIGHWAYS, AVIATION AND FACILITIES (408)
NORTHERN REGION HIGHWAYS & AVIATION
DALTON DISTRICT, CHART 2**



**FY2017 GOVERNOR'S
HIGHWAYS, AVIATION AND FACILITIES (408)
NORTHERN REGION HIGHWAYS & AVIATION (2068)
DALTON DISTRICT, CHART 2B**

FAIRBANKS
(JBA)

Dalton M&O Superintendent
25-1903 SS 21

**BARROW
(MEA)**

**DEADHORSE
(MBC)**

Rural Airport Foreman
25-3665 LL 49

Rural Airport Foreman
25-2023 LL 49

(Work alternate
workweeks)

(Work alternate
workweeks)

Equip Op Foreman II
25-3660 LL 50

Equip Op (J3/L)
25-3356 LL 52

Equipment Operator (J3)
25-2006 LL 52

Equipment Operator (J3)
25-2044 LL 52

Equip Op Foreman II
25-2061 LL 50

Equip Op Foreman II
25-3671 LL 50

Equipment Operator (J3)
25-1965 LL 52

Equipment Operator (J3)
25-2046 LL 52

Equipment Operator (J3)
25-2043 LL 52

Equipment Operator (J3)
25-2047 LL 52

Equipment Operator (J3)
25-2048 LL 52

Equipment Operator (J3)
25-2064 LL 52

Equipment Operator (J3)
25-2068 LL 52

Equipment Operator (J3)
25-3670 LL 52

Maint Electrician (J2)
25-2056 LL 51

Equipment Operator (SJ2/J1)
25-2206 LL 54/56

Equipment Operator (J3)
25-1653 LL 52

Equipment Operator (J3)
25-2555 LL 52

Equipment Operator (J3)
25-2207 LL 52

**FY2017 GOVERNOR'S
HIGHWAYS, AVIATION AND FACILITIES (408)
NORTHERN REGION HIGHWAYS & AVIATION (2068)
WESTERN DISTRICT, CHART 3**

**NOME
(HTA)**

Regional Maintenance Manager
25-1914 SS 23

Western M&O Superintendent
25-2162 SS 21

Office Assistant II
25-2138 GP 10

**KOTZEBUE
AIRPORT
(KAA)**

Rural Airport Foreman
25-2128 LL 49

Equipment Operator (J3)
25-2129 LL 52

Equipment Operator (J3)
25-2130 LL 52

Equipment Operator (J3)
25-2137 LL 52

Equipment Operator (J3)
25-3655 LL 52

Equipment Operator (J3)
25-3656 LL 52

Equipment Operator (J3)
25-3658 LL 52

Office Assistant III
25-2142 GP 11

**NOME
AIRPORT
(HTA)**

Rural Airport Foreman
25-2123 LL 49

Equipment Operator (J3)
25-1671 LL 52

Equipment Operator (J3)
25-2125 LL 52

Equipment Operator (J3)
25-2139 LL 52

Equipment Operator (J3)
25-2140 LL 52

Equipment Operator (J3)
25-2146 LL 52

Equipment Operator (J3)
25-2154 LL 52

Equipment Operator (J3)
25-3657 LL 52

Office Assistant II
25-1783 GP 10

**NOME
HIGHWAYS
(HTA)**

Equipment Operator (F1)
25-2124 LL 51

Equipment Operator (J2)
25-2126 LL 53

Equipment Operator (J2)
25-2135 LL 53

Equipment Operator (J2)
25-2136 LL 53

Equipment Operator (J2)
25-2151 LL 53

Equipment Operator (J2)
25-2152 LL 53

Equipment Operator (J2)
25-2153 LL 53

Equipment Operator (J2)
25-2144s LL 53

**ST. MARY'S
(EWG)**

Equipment Operator (F1)
25-1178 LL 51

Equipment Operator (J2)
25-1181 LL 53

**UNALAKLEET
AIRPORT
(HQA)**

Equipment Operator (F1)
25-2132 LL 51

Equipment Operator (J2)
25-2149 LL 53