

DEPARTMENT OF TRANSPORTATION AND PUBLIC FACILITIES  
 NORTHERN REGION CONSTRUCTION AND CIP SUPPORT(2295)  
 FY2017 GOVERNOR'S BUDGET

NORTHERN REGION CONSTRUCTION & CIP SUPPORT	
Positions	Total
Full-Time	67
Seasonal	88
Non-Perm	10
<b>Total</b>	<b>165</b>

Fairbanks (JBA)

**REGIONAL DIRECTOR**  
 Asst. Commissioner  
 251239 (XE) 27

**CONSTRUCTION**  
 (see Chart 2 and 3)

**REGIONAL PROJECT CONTROL  
CHIEF**  
 Accountant IV  
 251752 (SS) 20

**OPERATING BUDGET**  
 Budget Analyst III  
 PFT  
 251248 (GG) 19  
 Budgeted in Northern Region Planning

Accounting Tech III  
 251385 (GG) 16

Accounting Tech I  
 251403 (GG) 12

**Budget Manager**  
 Admin Officer I  
 251367 (SS) 17

**Recruitment Coordinator**  
 Admin Asst III  
 251256 (GP) 15  
 Budgeted in Northern  
 Region Support Service

Acct Clerk  
 251674 (GG) 10

Office Assistant II  
 251638 (GP) 10

CHART 1

Positions	Total
Full-Time	6
Seasonal	0
Non Perm	0
<b>Total</b>	<b>6</b>

All positions located in Fairbanks unless otherwise noted

Fairbanks (JBA)

**REGIONAL CONST ENGINEER**  
 Eng/Arch V  
 251634 (SS) 27

**CONST GROUP CHIEF**  
 Eng/Arch IV  
 251366 (SS) 26

**CONST GROUP CHIEF**  
 Eng/Arch IV  
 251368 (SS) 26

**QUALITY ASSURANCE**  
 Eng/Arch III  
 251838 (SS) 25

**CONST MANAGER**  
 Eng/Arch III  
 251407 (SS) 25

Staff assigned as required  
 (see Page 2 of Chart 2)

**CONST MANAGER**  
 Eng/Arch III  
 251827 (SS) 25

Staff assigned as required  
 (see Page 2 of Chart 2)

Maint Gen Journey  
 251494 (LL) 54

**CONST MANAGER**  
 Eng/Arch III  
 251411 (SS) 25

Eng Associate  
 251816 (GG) 21

Staff assigned as required  
 (see Page 2 of Chart 2)

**STORMWATER  
 SPECIALIST**  
 Eng/Arch I  
 251434 (GP) 22

**ENVIRONMENTAL  
 LIAISON**  
 Eng Asst III  
 251657 (GP) 21

**Environmental**  
 Eng Asst III  
 251534(S) (GP) 21

Staff assigned as required  
 (see Page 2 of Chart 2)

**CONST MANAGER**  
 Eng/Arch III  
 251384 (SS) 25

Staff assigned as required  
 (see Page 2 of Chart 2)

**CONST MANAGER**  
 Eng/Arch III  
 251603 (SS) 25

Staff assigned as required  
 (see Page 2 of Chart 2)

**CONST MANAGER**  
 Eng/Arch II  
 251371 (SS) 23

Staff assigned as required  
 (see Page 2 of Chart 2)

**NOME CONST MANAGER  
 and Western Area Staff  
 (see Chart 3)**

Admin Assist II  
 251451 (SS) 14

Office Assist III  
 251461 (GP) 11

Office Assist I  
 251410 (GP) 8

Office Assist I  
 251767 (GP) 8

**TRAFFIC COORDINATOR**  
 Eng Asst III  
 251387 (GP) 21

**NR CONST. LAB**  
 Eng Asst II  
 251436 (GP) 19

**QA / MATERIALS**  
 Eng Associate  
 253401 (GG) 21

Eng Asst III  
 253730 (GP) 21

Eng Asst II  
 251443 (GP) 19

**CONCURRENT REVIEW**  
 Eng Associate  
 251405 (GG) 21

Eng Asst II  
 251659 (GP) 19

Staff assigned as required  
 (see Page 2 of Chart 2)

Positions	Total
Full-Time	54
Seasonal	68
Non-perm	10
<b>Total</b>	<b>132</b>

All positions located in Fairbanks unless otherwise noted

Fairbanks (JBA)

STAFF ASSIGNED AS REQUIRED

Eng Associate	(GP/GG)	21
251431		
251573		
251578(S)		
251609		
251633		
251705		
251769		
251782(S)**		
251797		

Eng Asst III	(GP)	21
251412		
251447		
251534(S)		
251639		
251656(S)		
251658		
251765		
251781		
251784(S)		
251796		
251869(S)		
253731		
253732		
253402		
251632(S)		

Eng Asst II	(GP/GG)	19
251449		
251455(S)		
251457		
251459		
251555		
251557(S)		
251579(S)		
251580		
251582(S)		
251625(S)		
251637		
251660(S)		
251661(S)		
251742(S)		
251761(S)		
251812(S)		
251818(S)		
253405 (EIT)		
253525		
253526		
253527		
253528		
251541(S)		
251548(S)		
251662(S)		

Eng Asst I	(GP/GG)	17
253521		

Eng Technician (J)	(LL)	54
251464(S)		
251465(S)		
251469(S)		
251474(S)		
251479(S)		
251524(S)		
251667(S)		
251748(S)		
251758(S)		
251852(S)		
251862(S)		

Eng Technician (SJ3)	(LL)	55
251480(S)		
251484(S)		
251485(S)		
251486(S)		
251492(S)		
251615(S)		
251678(S)		
251762(S)		
251854(S)		
251857(S)		
251875(S)		
251876(S)		

Eng Technician (SJ2)	(LL)	57
251502(S)	251691(S)***	
251505(S)	251693(S)	
251507(S)	251697(S)	
251508(S)	251700(S)	
251511(S)	251701(S)	
251518(S)	251710(S)	
251519(S)	251745(S)	
251525(S)	251787(S)	
251566(S)	251880(S)	
251569(S)		
251596(S)		
251684(S)		
251688(S)		
251689(S)		

\*\*Position assigned to Valdez (EAA)  
 \*\*\* Position resides in Deadhorse (MBC), but assigned to Fairbanks project managers

Legend
J = Journey
SJ = SubJourney

All positions located in Fairbanks unless otherwise noted

Fairbanks (JBA)

STAFF ASSIGNED AS REQUIRED

**NON PERMANENT  
 POSITIONS  
 Assigned as needed**

Eng Tech SJ I  
 25-NP077  
 25IN1005 (LL) 59

Eng Tech SJ I  
 25-NP082  
 25IN1010 (LL) 59

College Interns / Environmental

College Intern II	(EE)	09
25IN1114		
College Intern III	(EE)	10
25IN1115		
College Intern II	(EE)	09
25IN1302		

Eng Tech SJ I  
 25-NP078  
 25IN1006 (LL) 59

Eng Tech SJ I  
 25-NP083  
 25IN1011 (LL) 59

Eng Tech SJ I  
 25-NP079  
 25IN1007 (LL) 59

Eng Tech SJ I  
 25-NP084  
 25IN1012 (LL) 59

Eng Tech SJ I  
 25-NP080  
 25IN1008 (LL) 59

Eng Tech SJ I  
 25-NP085  
 25IN1013 (LL) 59

Eng Tech SJ I  
 25-NP081  
 25IN1009 (LL) 59

Eng Tech SJ II  
 25-NP086  
 25IN1014 (LL) 57

Legend  
 J = Journey  
 SJ = SubJourney

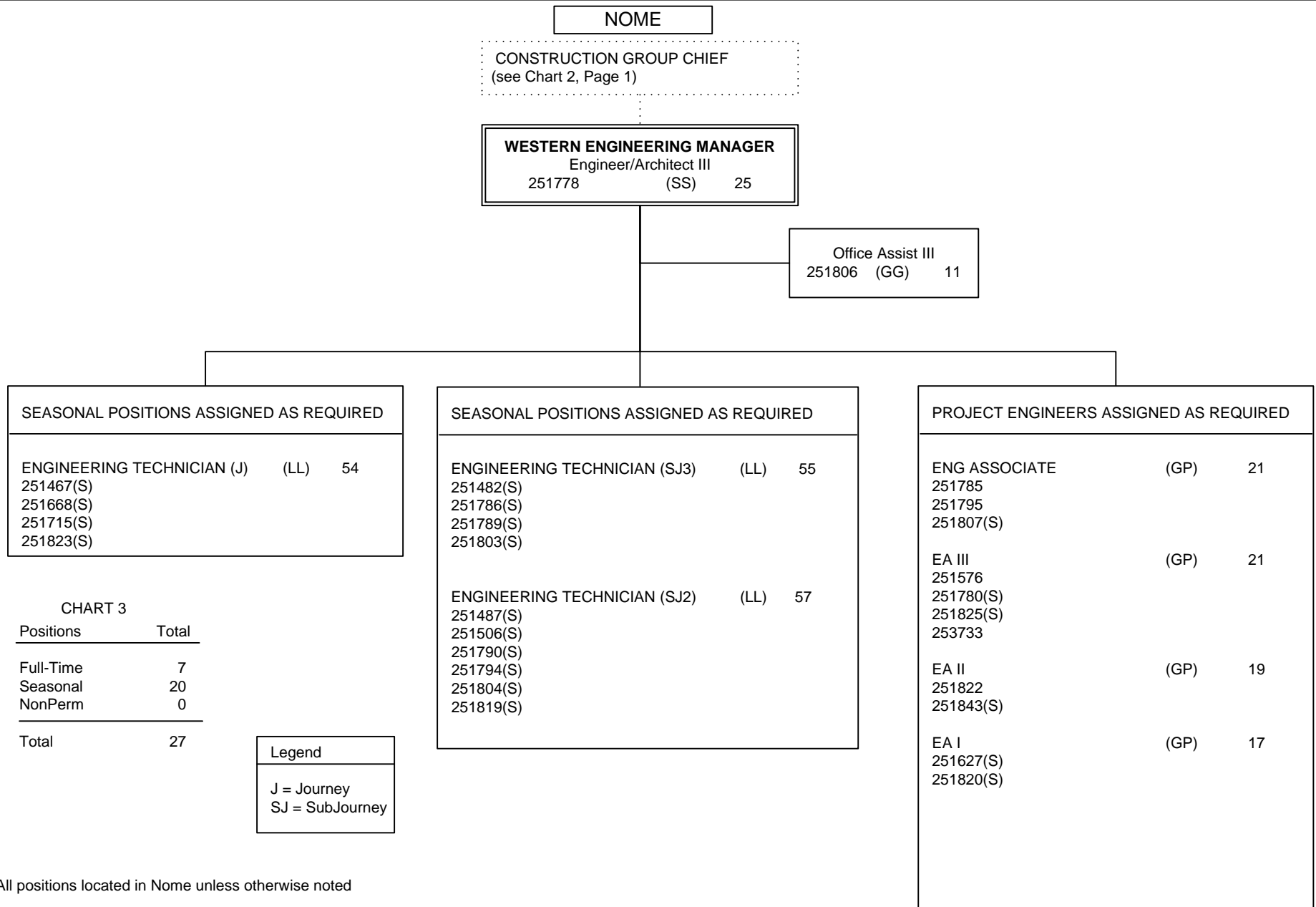


CHART 3

Positions	Total
Full-Time	7
Seasonal	20
NonPerm	0
<b>Total</b>	<b>27</b>

Legend
J = Journey
SJ = SubJourney

All positions located in Nome unless otherwise noted