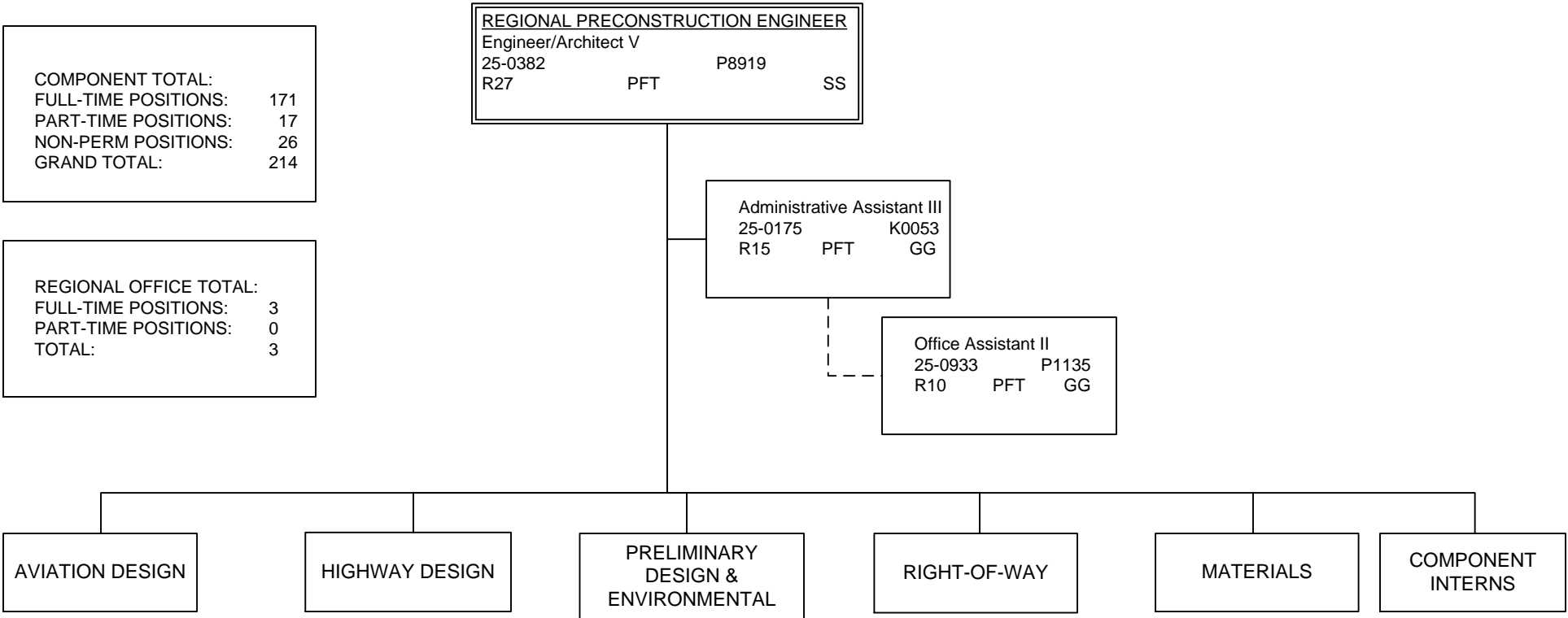


DEPARTMENT OF TRANSPORTATION AND PUBLIC FACILITIES
 RDU: DESIGN, ENGINEERING AND CONSTRUCTION
 COMPONENT: CENTRAL DESIGN AND ENGINEERING SERVICES (2298)
 FY2017 GOVERNOR'S BUDGET



COMPONENT TOTAL:
 FULL-TIME POSITIONS: 171
 PART-TIME POSITIONS: 17
 NON-PERM POSITIONS: 26
 GRAND TOTAL: 214

REGIONAL OFFICE TOTAL:
 FULL-TIME POSITIONS: 3
 PART-TIME POSITIONS: 0
 TOTAL: 3

Note: All positions are located in Anchorage.

DEPARTMENT OF TRANSPORTATION AND PUBLIC FACILITIES
 RDU: DESIGN, ENGINEERING AND CONSTRUCTION
 COMPONENT: CENTRAL DESIGN AND ENGINEERING SERVICES (2298)
 FY2017 GOVERNOR'S BUDGET

AVIATION DESIGN TOTAL:
 FULL-TIME POSITIONS: 20
 PART-TIME POSITIONS: 0
 TOTAL 20

AVIATION DESIGN GROUP CHIEF
 Engineer/Architect IV
 25-0378 P8916
 R26 PFT SS

Engineering Manager
 Engineer/Architect III
 25-0224 P8915
 R25 PFT SS

Engineering Manager
 Engineer/Architect II
 25-0402 P8914
 R23 PFT SS

Engineering Manager
 Engineer/Architect II
 25-0429 P8914
 R23 PFT SS

Engineering Manager
 Engineer/Architect II/III
 25-0636 P8914/8915
 R23/25 PFT SS

Consultant Coordinator
 Engineer/Architect I
 25-3442 P8913
 R22 PFT GG

Consultant Coordinator
 Engineer/Architect I
 25-0676 P8913
 R22 PFT GG

Consultant Coordinator
 Engineer/Architect I
 P8913
 R22 PFT GG
 25-0599
 25-0671

Squad Leader
 Engineer/Architect I
 25-0687 P8913
 R22 PFT GG

Squad Leader
 Engineer/Architect I
 25-3441 P8913
 R22 PFT GG

Engineer Assistant III
 25-3440 P8912
 R21 PFT GG

Engineer Assistant III
 25-0685 P8912
 R21 PFT GG

Engineering Assistant I/II
 P8910/8911
 R17/19 PFT GG
 25-0689
 25-3438

Engineering Assistant I/II
 P8910/8911
 R17/19 PFT GG
 25-0738
 25-0808

Drafting Technician III
 25-0705 P8425
 R15 PFT GG

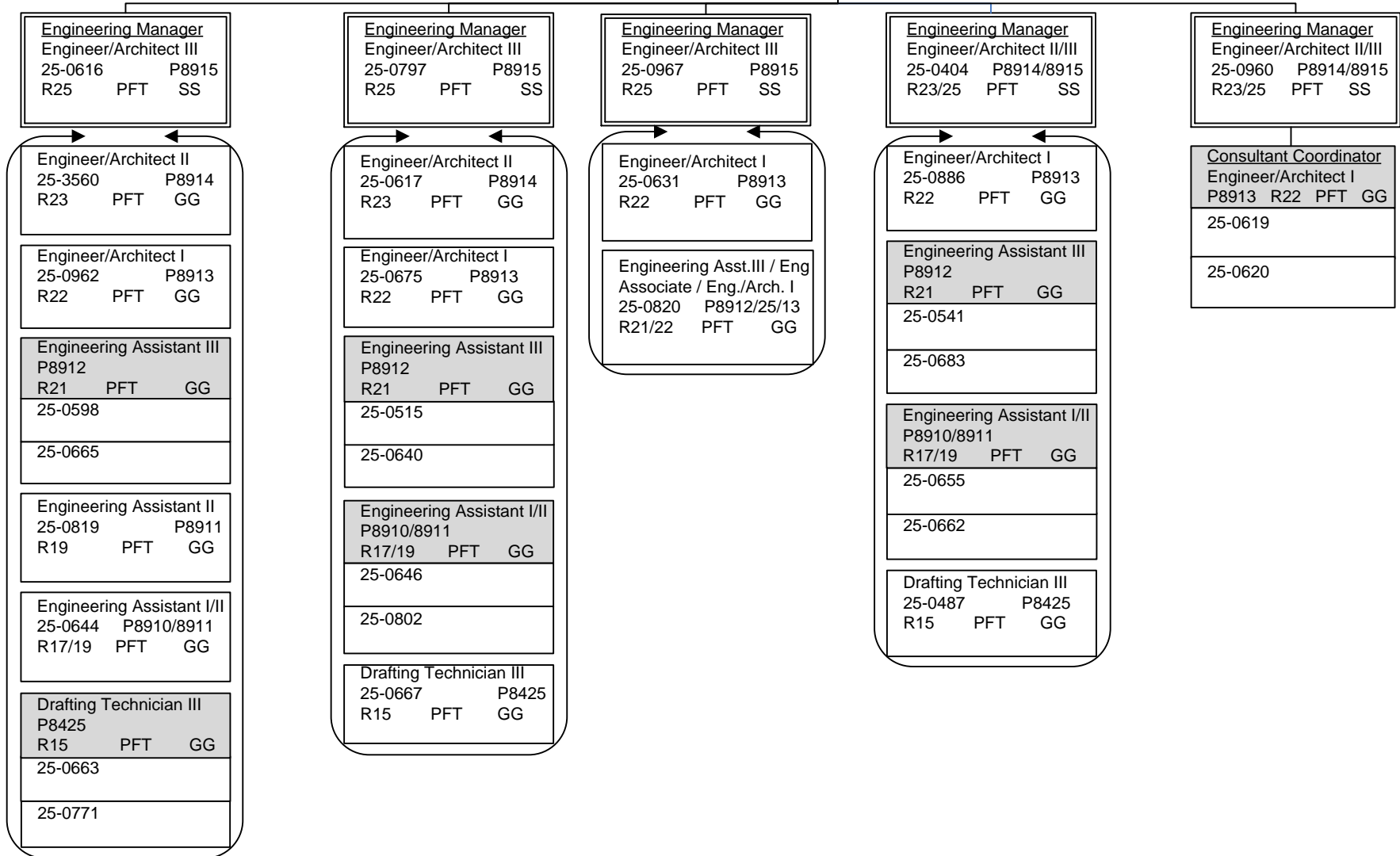
Drafting Technician III
 25-0706 P8425
 R15 PFT GG

Note: All positions are located in Anchorage.

DEPARTMENT OF TRANSPORTATION AND PUBLIC FACILITIES
 RDU: DESIGN, ENGINEERING AND CONSTRUCTION
 COMPONENT: CENTRAL DESIGN AND ENGINEERING SERVICES (2298)
 FY2017 GOVERNOR'S BUDGET

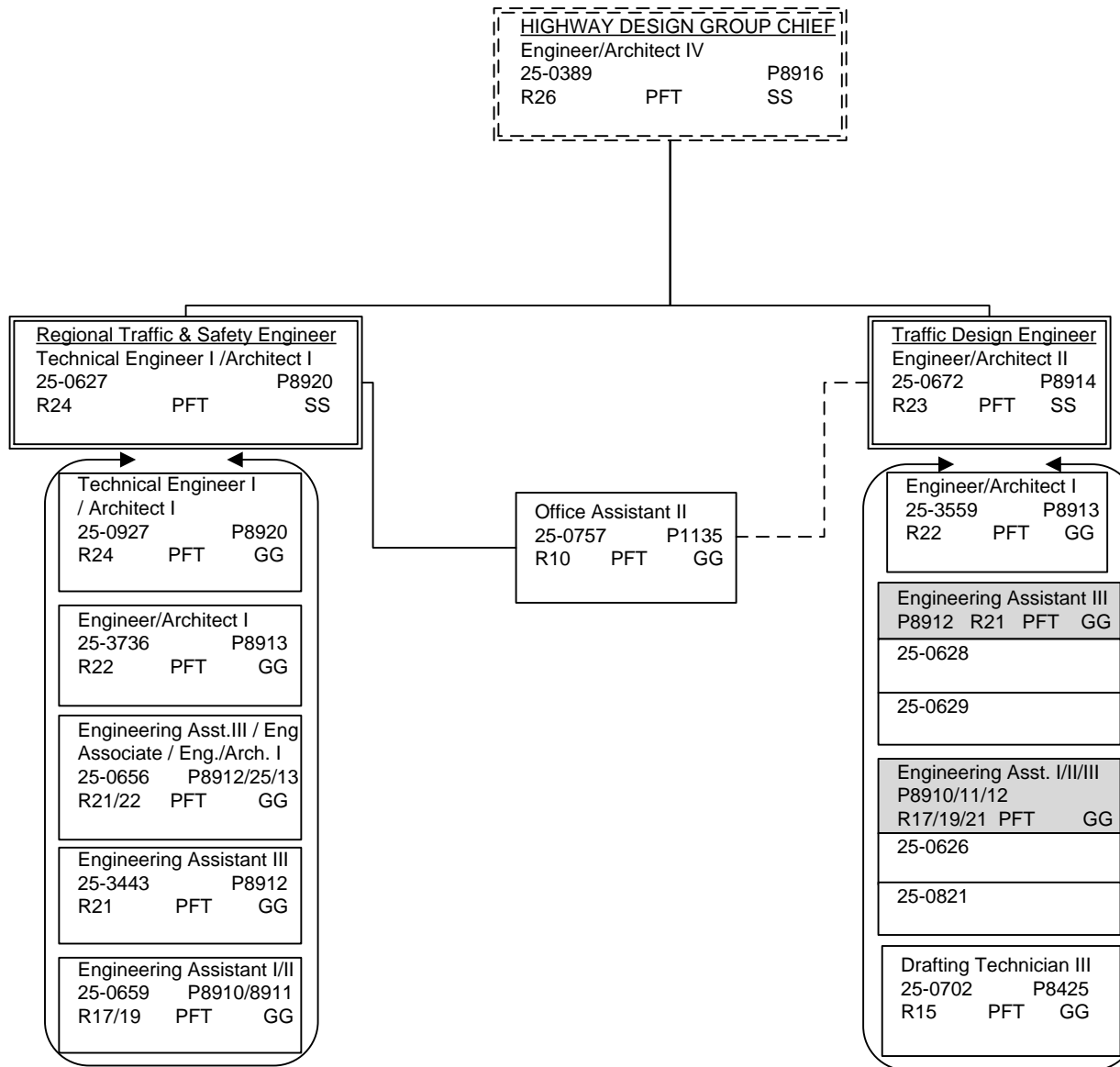
HIGHWAY DESIGN TOTAL:	
FULL-TIME POSITIONS:	45
PART-TIME POSITIONS:	0
TOTAL	45

HIGHWAY DESIGN GROUP CHIEF		
Engineer/Architect IV		
25-0389		P8916
R26	PFT	SS



Note: All positions are located in Anchorage.

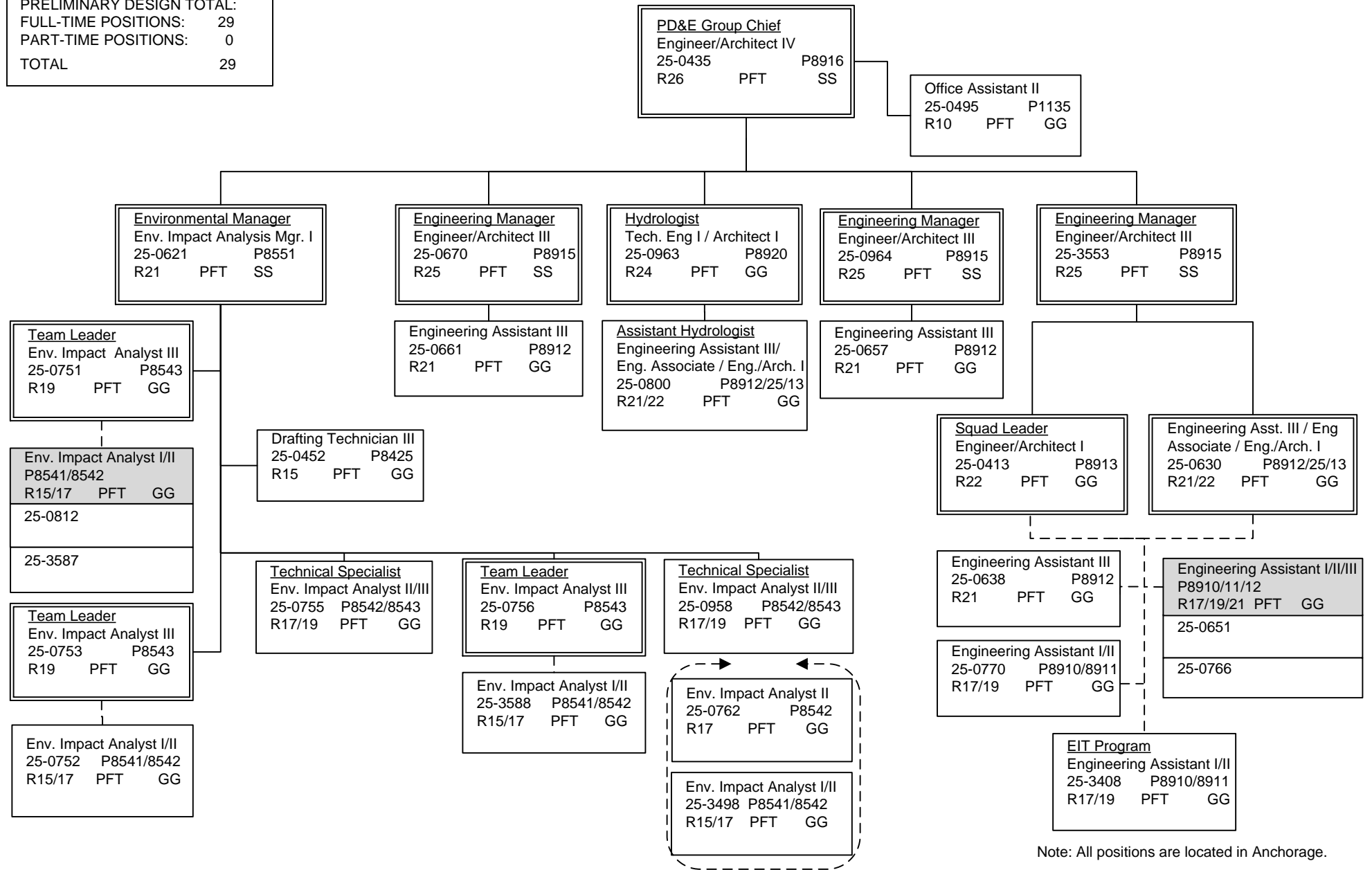
DEPARTMENT OF TRANSPORTATION AND PUBLIC FACILITIES
 RDU: DESIGN, ENGINEERING AND CONSTRUCTION
 COMPONENT: CENTRAL DESIGN AND ENGINEERING SERVICES (2298)
 FY2017 GOVERNOR'S BUDGET



Note: All positions are located in Anchorage.

DEPARTMENT OF TRANSPORTATION AND PUBLIC FACILITIES
 RDU: DESIGN, ENGINEERING AND CONSTRUCTION
 COMPONENT: CENTRAL DESIGN AND ENGINEERING SERVICES (2298)
 FY2017 GOVERNOR'S BUDGET

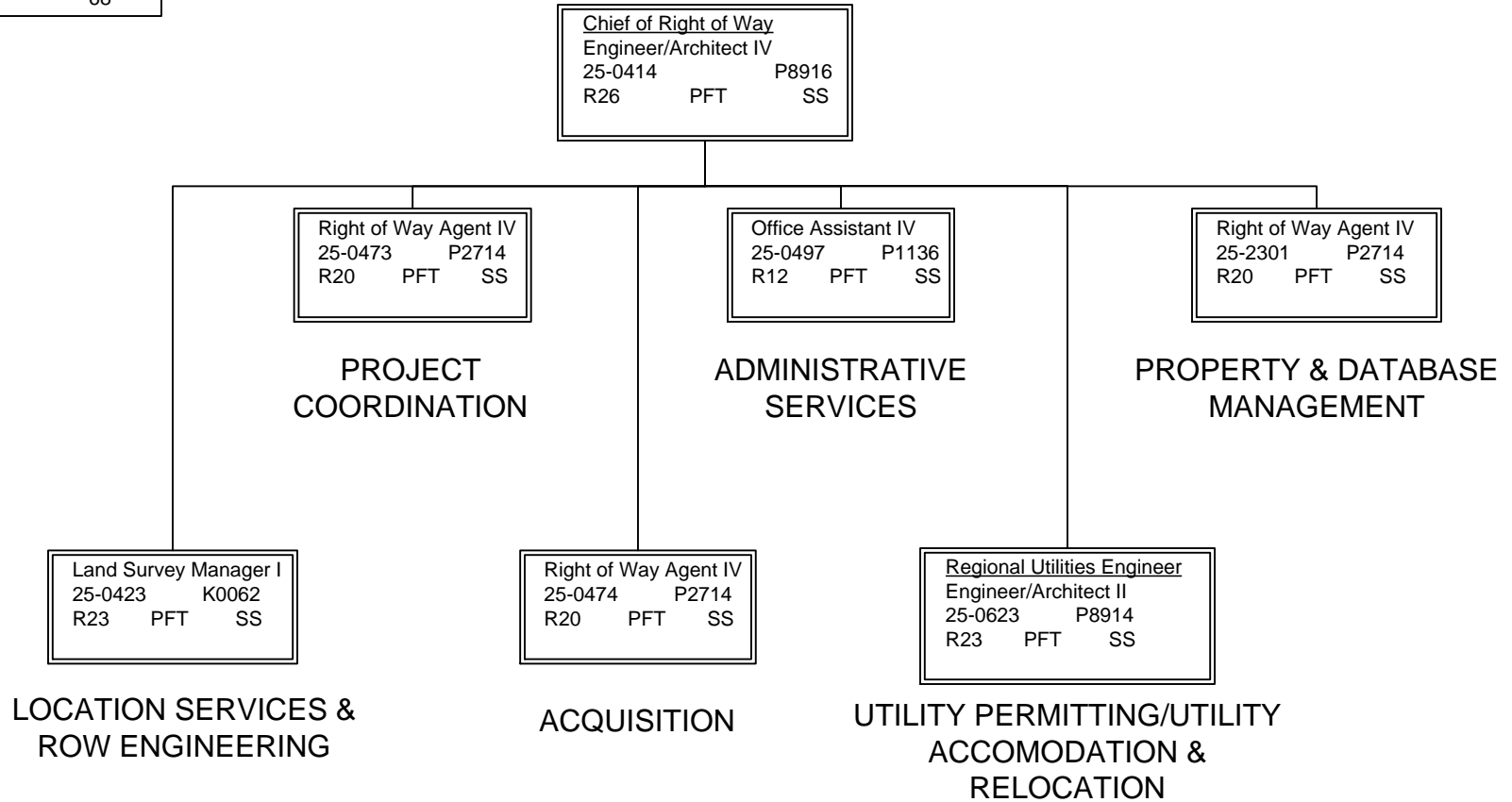
PRELIMINARY DESIGN TOTAL:	
FULL-TIME POSITIONS:	29
PART-TIME POSITIONS:	0
TOTAL	29



Note: All positions are located in Anchorage.

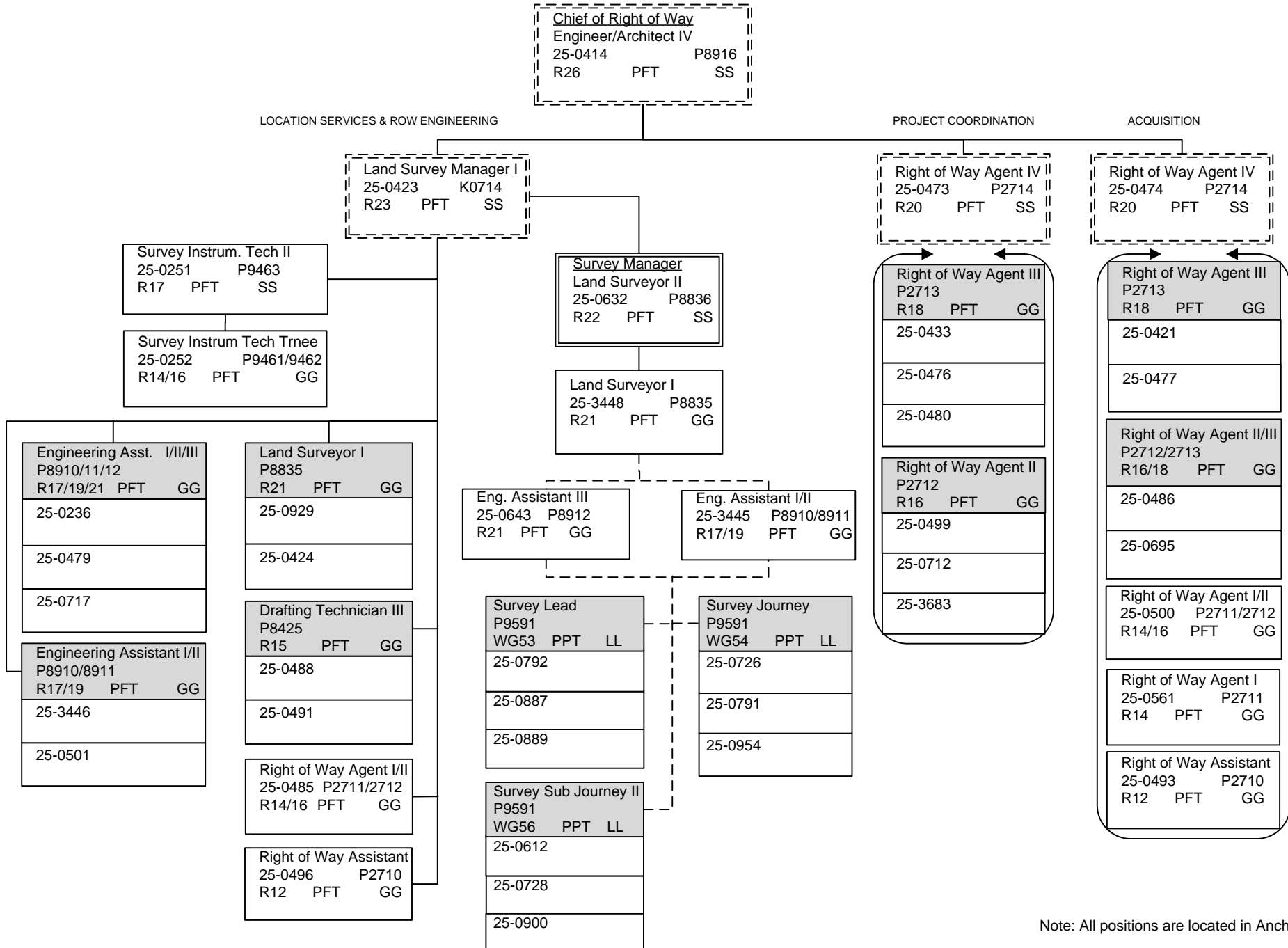
DEPARTMENT OF TRANSPORTATION AND PUBLIC FACILITIES
 RDU: DESIGN, ENGINEERING AND CONSTRUCTION
 COMPONENT: CENTRAL DESIGN AND ENGINEERING SERVICES (2298)
 FY2017 GOVERNOR'S BUDGET

RIGHT OF WAY TOTAL:	
FULL-TIME POSITIONS:	59
PART-TIME POSITIONS:	9
TOTAL	68



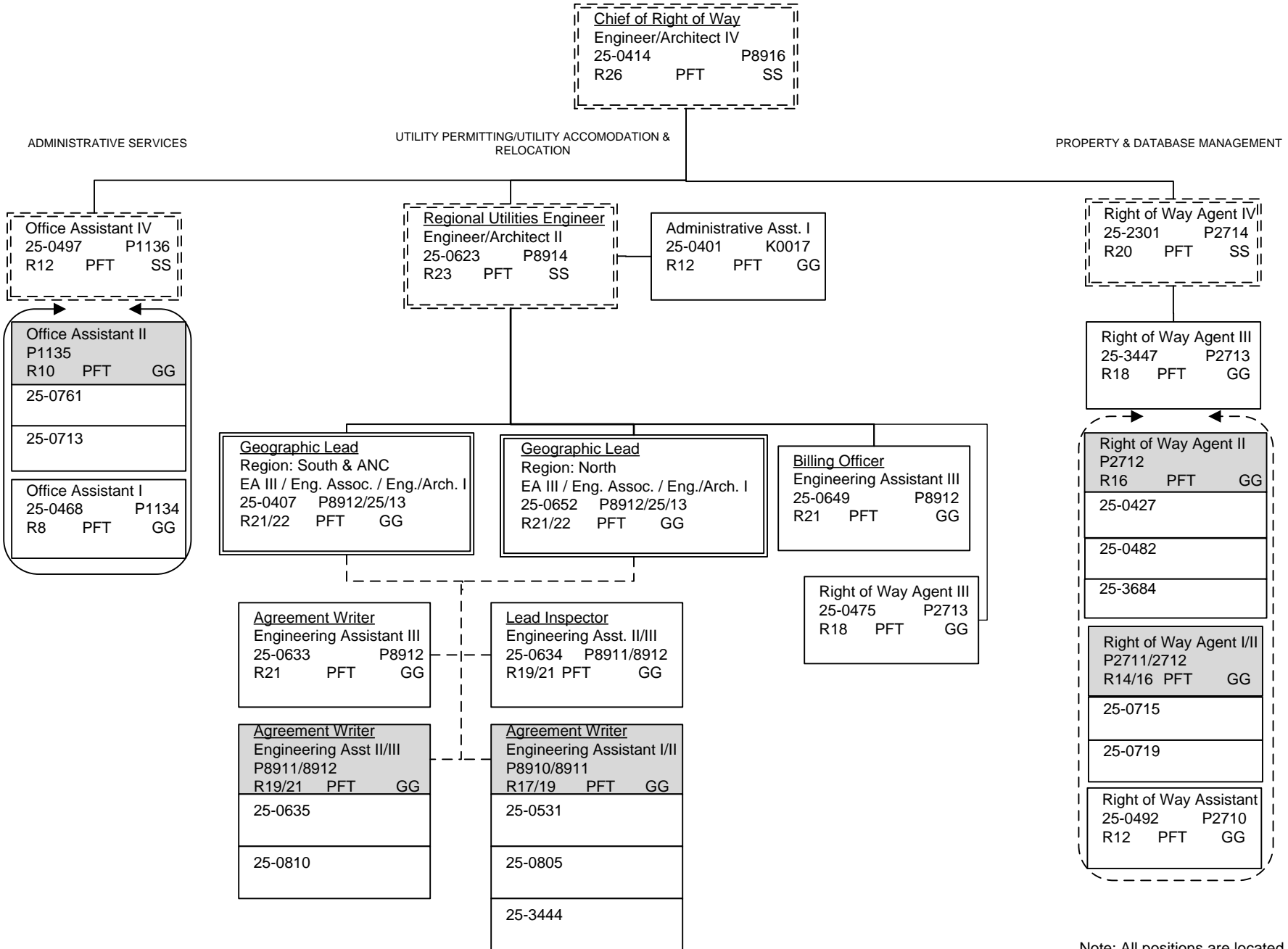
Note: All positions are located in Anchorage.

DEPARTMENT OF TRANSPORTATION AND PUBLIC FACILITIES
 RDU: DESIGN, ENGINEERING AND CONSTRUCTION
 COMPONENT: CENTRAL DESIGN AND ENGINEERING SERVICES (2298)
 FY2017 GOVERNOR'S BUDGET



Note: All positions are located in Anchorage.

DEPARTMENT OF TRANSPORTATION AND PUBLIC FACILITIES
 RDU: DESIGN, ENGINEERING AND CONSTRUCTION
 COMPONENT: CENTRAL DESIGN AND ENGINEERING SERVICES (2298)
 FY2017 GOVERNOR'S BUDGET



Note: All positions are located in Anchorage.

DEPARTMENT OF TRANSPORTATION AND PUBLIC FACILITIES
 RDU: DESIGN, ENGINEERING AND CONSTRUCTION
 COMPONENT: CENTRAL DESIGN AND ENGINEERING SERVICES (2298)
 FY2017 GOVERNOR'S BUDGET

MATERIALS TOTAL:
 FULL-TIME POSITIONS: 15
 PART-TIME POSITIONS: 8
 TOTAL 23

MATERIALS ENGINEER
 Engineer/Architect III
 25-0387 P8915
 R25 PFT SS

Engineer/Architect I
 25-0249 P8913
 R22 PFT GG

Mat Lab Tech Foreman
 25-0736 P9581
 WG51 PPT LL

Lab Coordinator
 Engineering Assistant III
 25-0507 P8912
 R21 PFT GG

Regional Geologist Engineer
 Tech Eng I / Architect I
 25-0504 P8920
 R24 PFT GG

Regional Engineering Geologist
 25-0725 K0042
 R22 PFT SS

Administrative Asst. III
 25-0242 K0053
 R15 PFT GG

Engineering Assistant II/III
 25-0747 P8911/8912
 R19/21 PFT GG

MatLab Tech SJ I/II/III/IV/Jny
 P9581 PFT LL
 WG59/57/56/54/53
 25-0741

Engineering Assistant II/III
 25-0733 P8911/8912
 R19/21 PFT GG

Engineering Assistant II/III
 25-0733 P8911/8912
 R19/21 PFT GG

Engineering Assistant II/III
 25-0241 P8911/8912
 R19/21 PFT GG

Office Assistant II
 25-0739 P1135
 R10 PFT GG

Engineering Asst I/II (EIT)
 25-3459 P8910/8911
 R17/19 PFT GG

MatLab Tech SJ I/II/III/IV/Jny
 P9581 PPT LL
 WG59/57/56/54/53
 25-0590
 25-0605
 25-0721
 25-0743
 25-0893
 25-1504
 25-1649

Engineering Assistant II/III
 25-0925 P8911/8912
 R19/21 PFT GG

Engineering Geologist I/II
 25-0724 P8386/8387
 R16/18 PFT GG

Note: All positions are located in Anchorage.

DEPARTMENT OF TRANSPORTATION AND PUBLIC FACILITIES
 RDU: DESIGN, ENGINEERING AND CONSTRUCTION
 COMPONENT: CENTRAL DESIGN AND ENGINEERING SERVICES (2298)
 FY2017 GOVERNOR'S BUDGET

NON-PERM TOTAL:	
FULL-TIME POSITIONS:	0
PART-TIME POSITIONS:	0
NON-PERM POSITIONS:	26
TOTAL	26

COLLEGE INTERNS

College Intern I/II (FLEX)	
R8/9	EE P6954/P6955
25IN1215	25IN1219
25IN1216	25IN1221
25IN1217	25IN1222
25IN1218	25IN1223

College Intern I/II/III/IV (FLEX)	
R8/9/10/12	EE P6954/P6955
25IN1428	25IN1437
25IN1429	25IN1438
25IN1430	25IN1439
25IN1431	25IN1440
25IN1432	25IN1441
25IN1433	25IN1502
25IN1434	25IN1503
25IN1435	25IN1504
25IN1436	25IN1505

Note: All positions are located in Anchorage.