

Fairbanks (JBA)

REGIONAL DIRECTOR
 Asst. Commissioner
 25-1239 (XE) 27

PRE-CONSTRUCTION ENGINEER
 Eng/Arch V
 25-1369 (SS) 27

Admin Assistant II
 25-1732 (GP) 14

NORTHERN REGION DESIGN & ENGINEERING SERVICES	
POSITIONS	TOTAL
FULL-TIME	119
SEASONAL	15
NONPERM	3
TOTAL	137

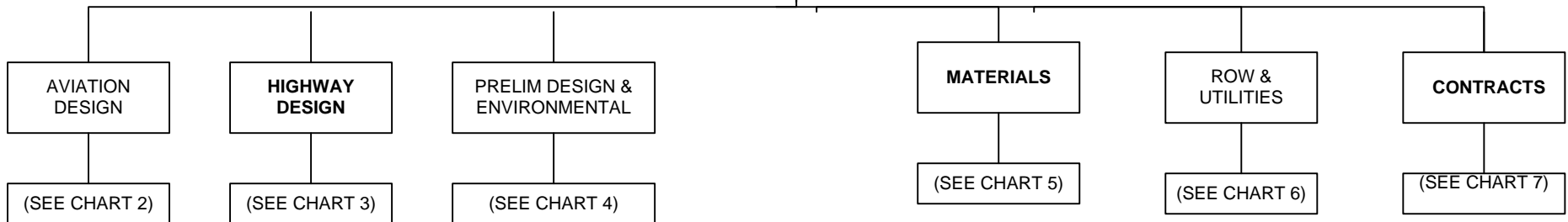


CHART 1

Positions	Total
Full-Time	2
Seasonal	0
Total	2

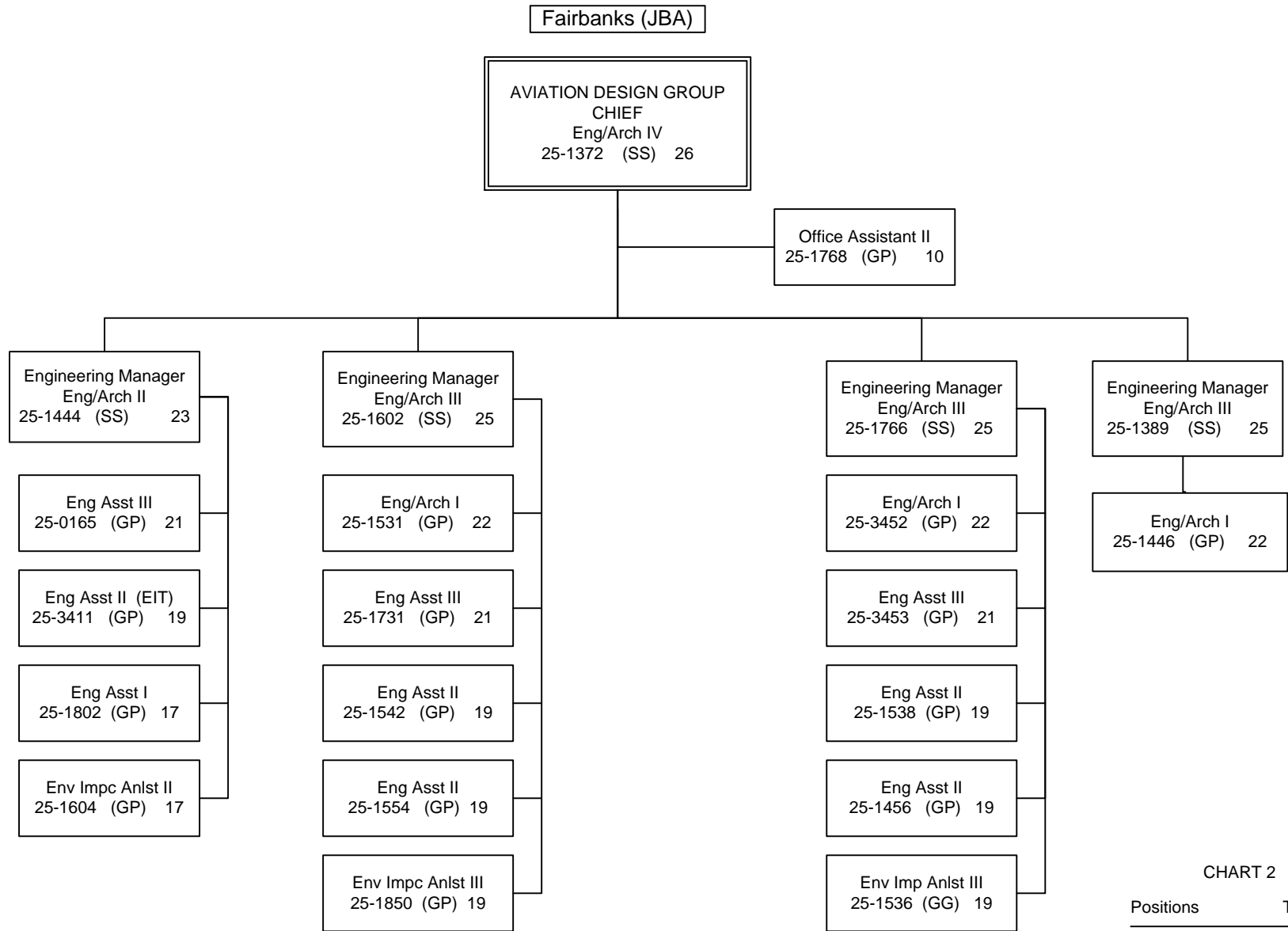


CHART 2

Positions	Total
Full-Time	21
Seasonal	0
Total	21

All positions located in Fairbanks unless otherwise noted

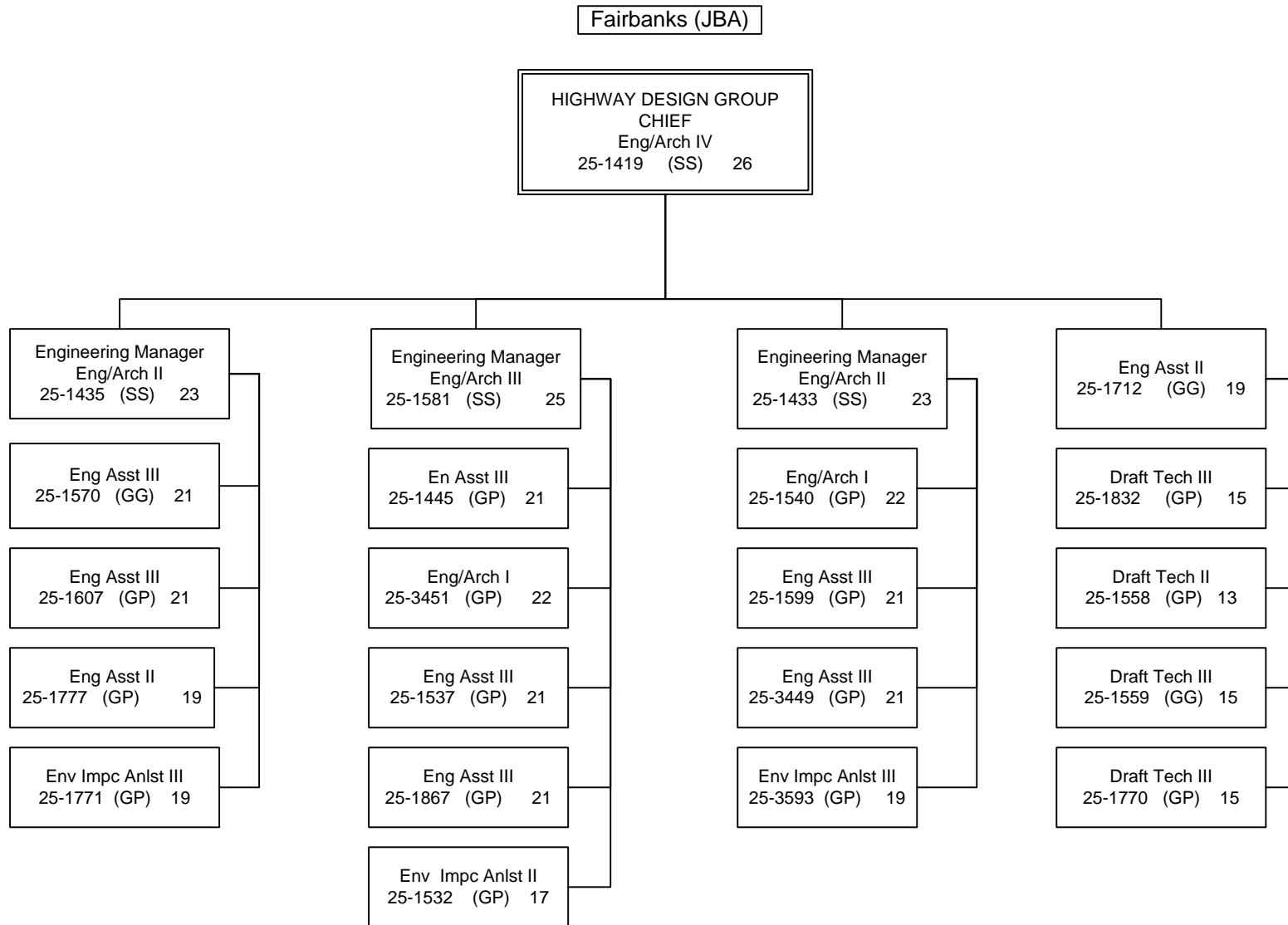


CHART 3

Positions	Total
Full-Time	22
Seasonal	0
Total	22

All positions located in Fairbanks unless noted.

Fairbanks (JBA)

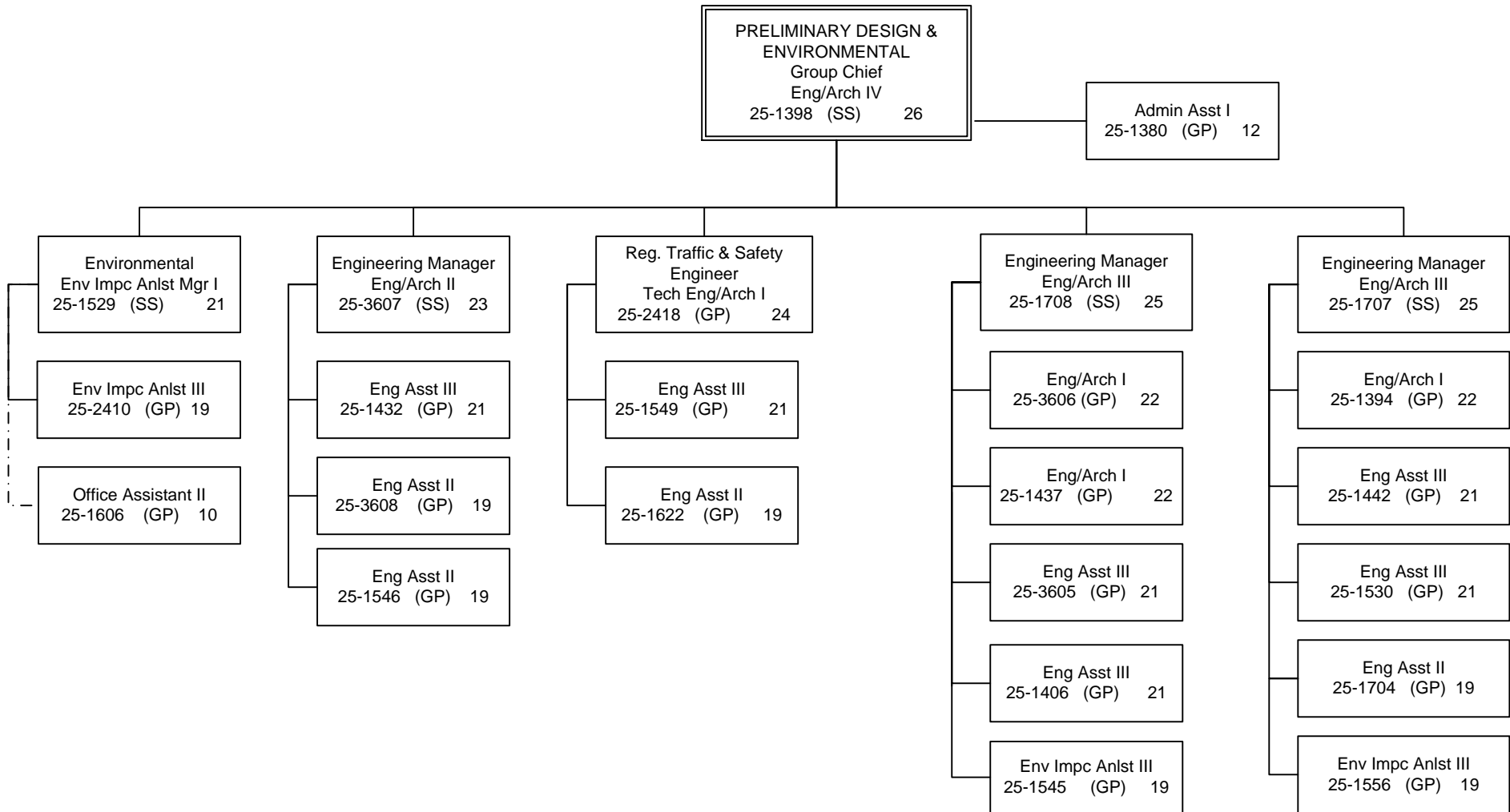


CHART 4

Positions	Total
Full-Time	24
Seasonal	0
Total	24

All positions located in Fairbanks unless otherwise noted

Fairbanks (JBA)

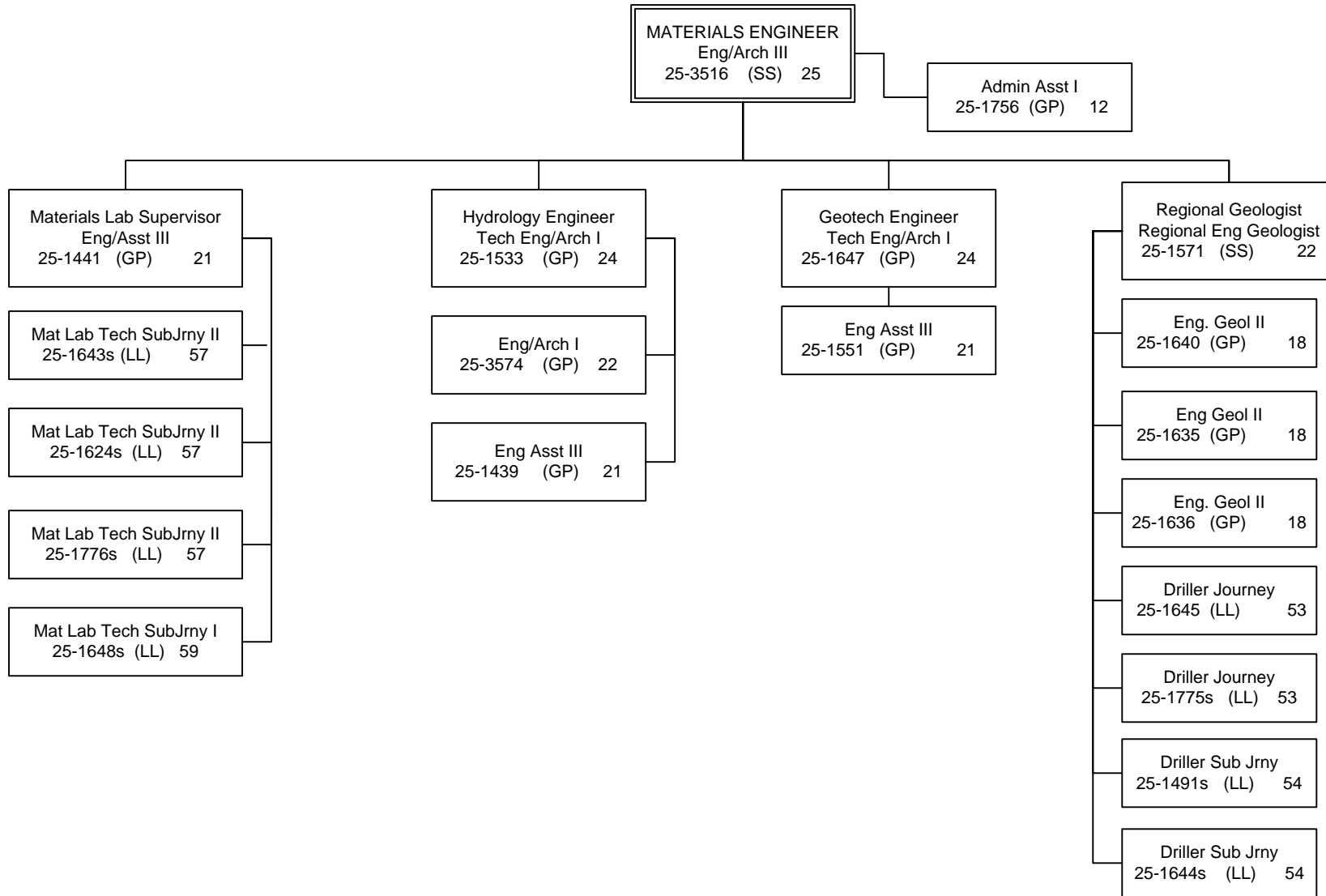


CHART 5

Positions	Total
Full-Time	13
Seasonal	7
Total	20

All positions located in Fairbanks unless otherwise noted

Fairbanks (JBA)

RIGHT OF WAY GROUP CHIEF
 ROW Agent VI
 25-1382 (SS) 23

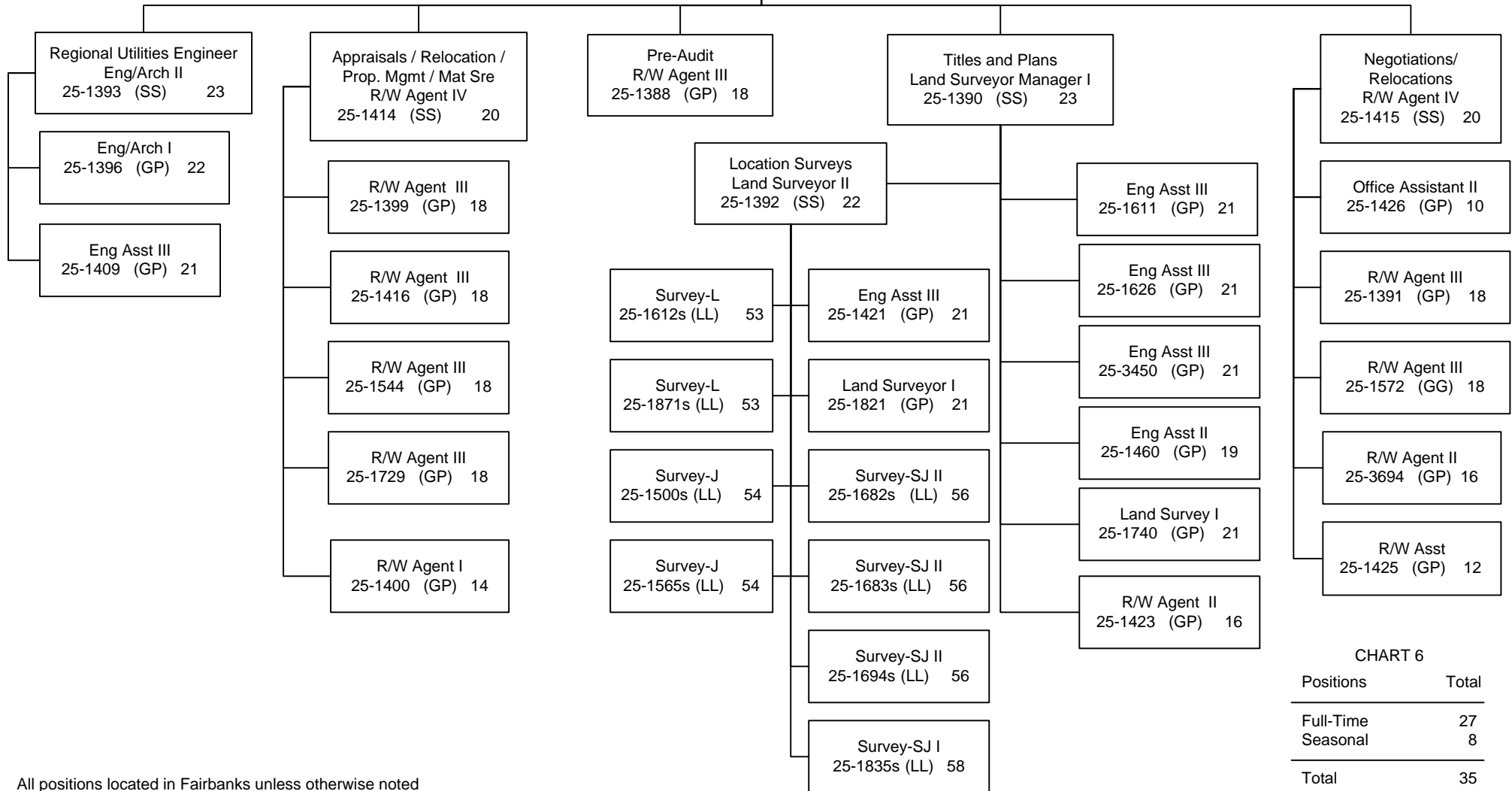
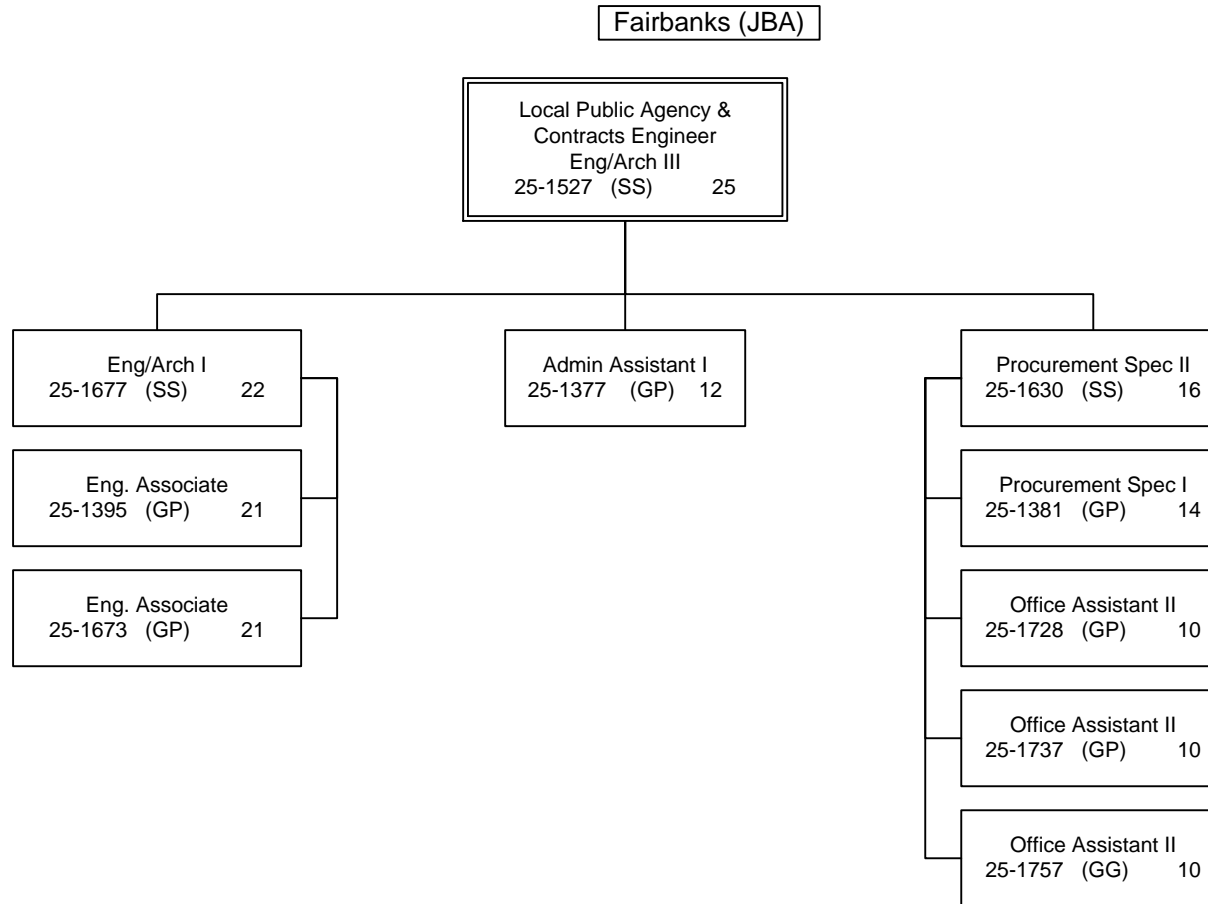


CHART 6

Positions	Total
Full-Time	27
Seasonal	8
Total	35

All positions located in Fairbanks unless otherwise noted



All positions located in Fairbanks unless otherwise noted

CHART 7

Positions	Total
Full-Time	10
Seasonal	0
Total	10

Fairbanks (JBA)
 Assigned as needed

Design
 College Intern II
 25IN1201 (EE) 09

Design
 College Intern II
 25IN1202 (EE) 09

Design
 College Intern I/II/III/IV
 25IN1204 (EE) 08/19/10/12

CHART 8

Positions	Total
Full-Time	0
Seasonal	0
Non-Perm	3
Total	3

All positions located in Fairbanks unless otherwise noted