

Department of Transportation and Public Facilities
 RDU: Design, Engineering and Construction
 Component: Southcoast Region Design and Engineering Services (2300)
 FY2017 Governor's Request

SOUTHCOAST REGION DESIGN & ENGINEERING SERVICES	
POSITIONS	TOTAL
FULL-TIME	76
SEASONAL	6
NON PERM	3
TOTAL	85

All positions located in Juneau (AWA)

DIVISION DIRECTOR *
 25-1374 (27) PX PFT

*25-1374 is budgeted in the Support Services component.

PRE-CONSTRUCTION ENGINEER
 Eng/Arch V
 25-2300 (27) SS PFT

Administrative Officer I
 25-2351 (17) SS PFT

Admin Assistant I
 25-0498 (12) GG PFT

Office Assistant II
 25-2327 (10) GG PFT

Office Assistant II
 25-2299 (10) GG PFT

Office Assistant II
 25-2345 (10) GG PFT

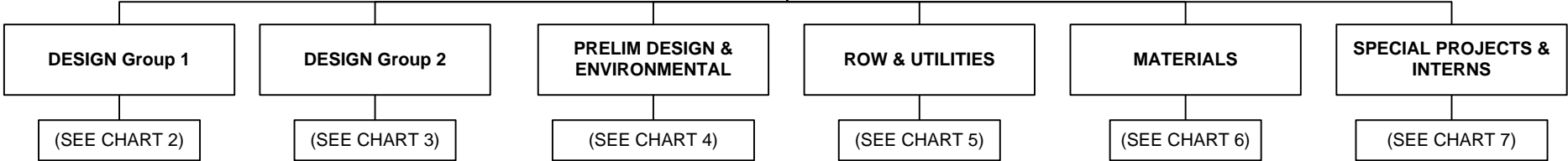


CHART 1

Positions	Total
Full-Time	6
Seasonal	0
Total	6

Department of Transportation and Public Facilities
 RDU: Design, Engineering and Construction
 Component: Southcoast Region Design and Engineering Services (2300)
 FY2017 Governor's Request

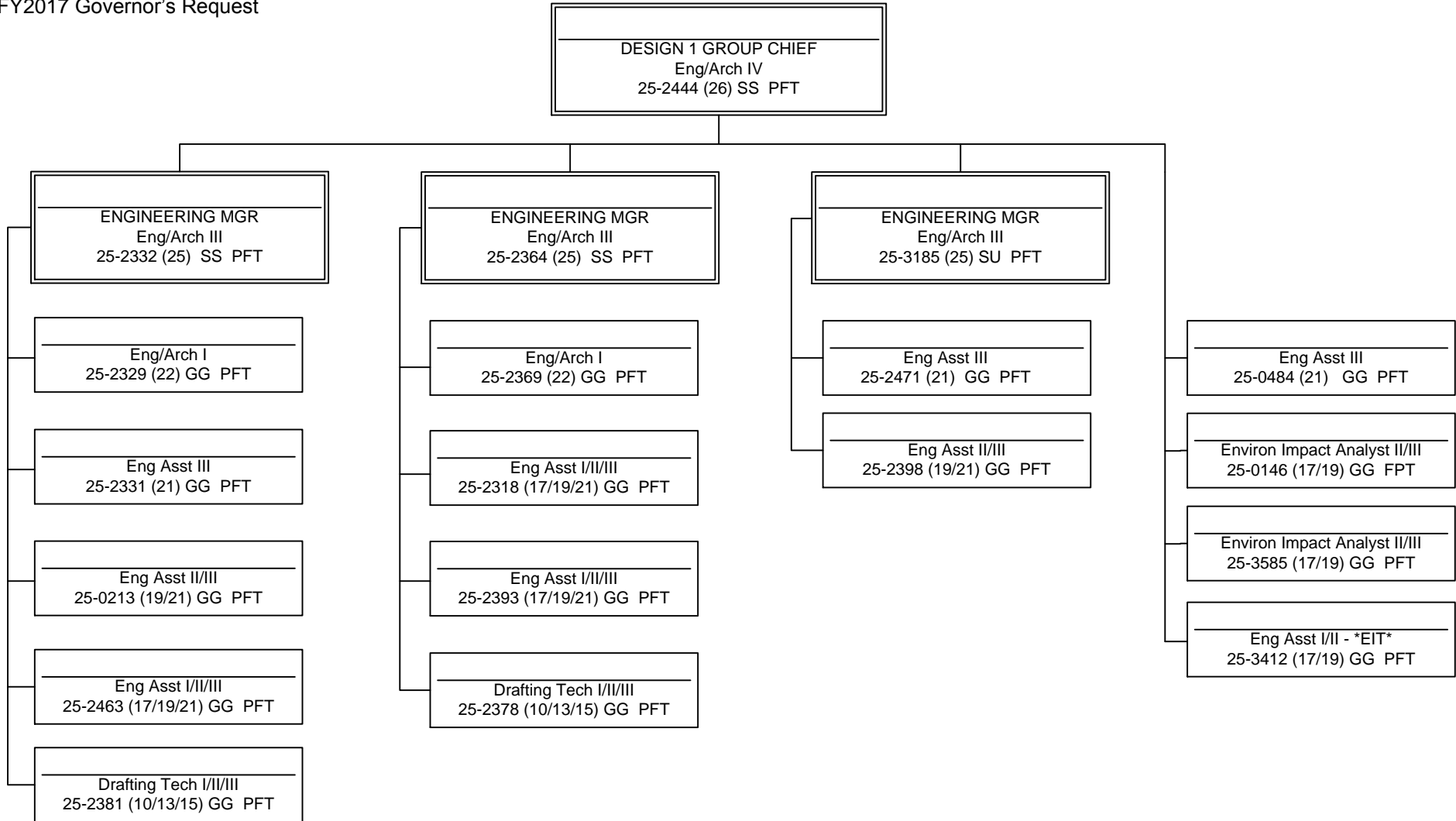


CHART 2

Positions	Total
Full-Time	19
Seasonal	0
Total	19

Department of Transportation and Public Facilities
 RDU: Design, Engineering and Construction
 Component: Southcoast Region Design and Engineering Services (2300)
 FY2017 Governor's Request

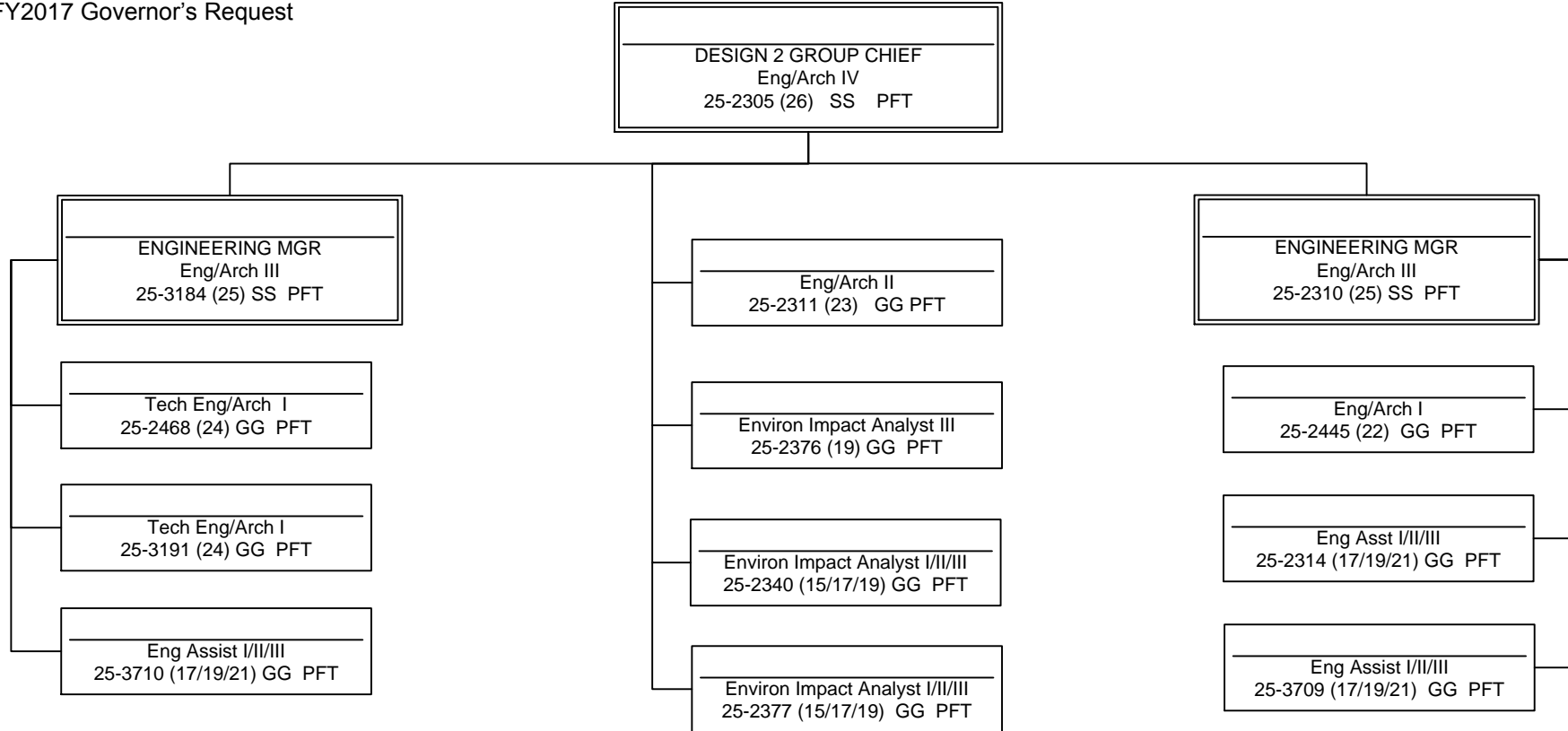


CHART 3

Positions	Total
Full-Time	13
Seasonal	0
Total	13

Department of Transportation and Public Facilities
 RDU: Design, Engineering and Construction
 Component: Southcoast Region Design and Engineering Services (2300)
 FY2017 Governor's Request

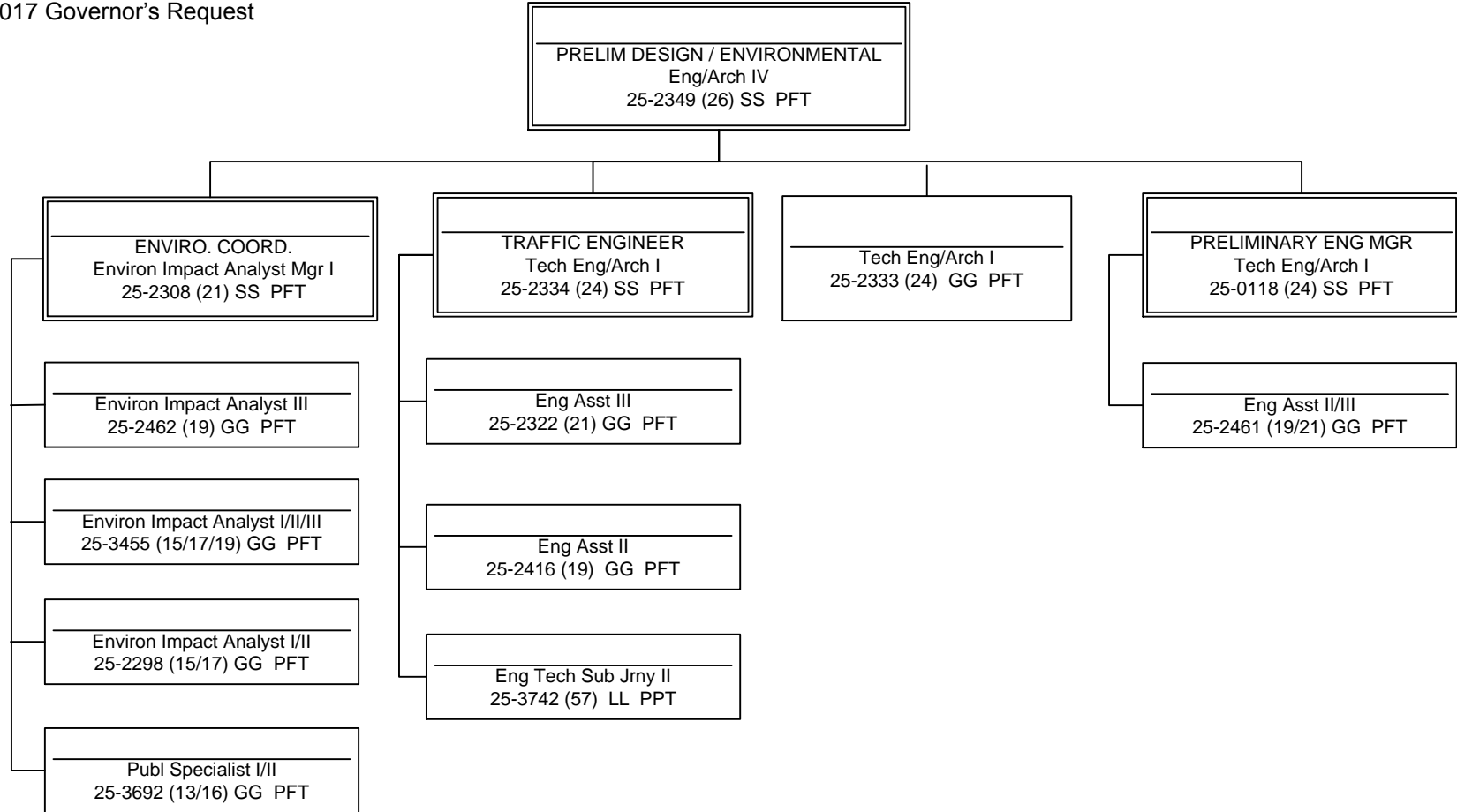


CHART 4

Positions	Total
Full-Time	12
Seasonal	1
Total	13

Department of Transportation and Public Facilities
 RDU: Design, Engineering and Construction
 Component: Southcoast Region Design and Engineering Services (2300)
 FY2017 Governor's Request

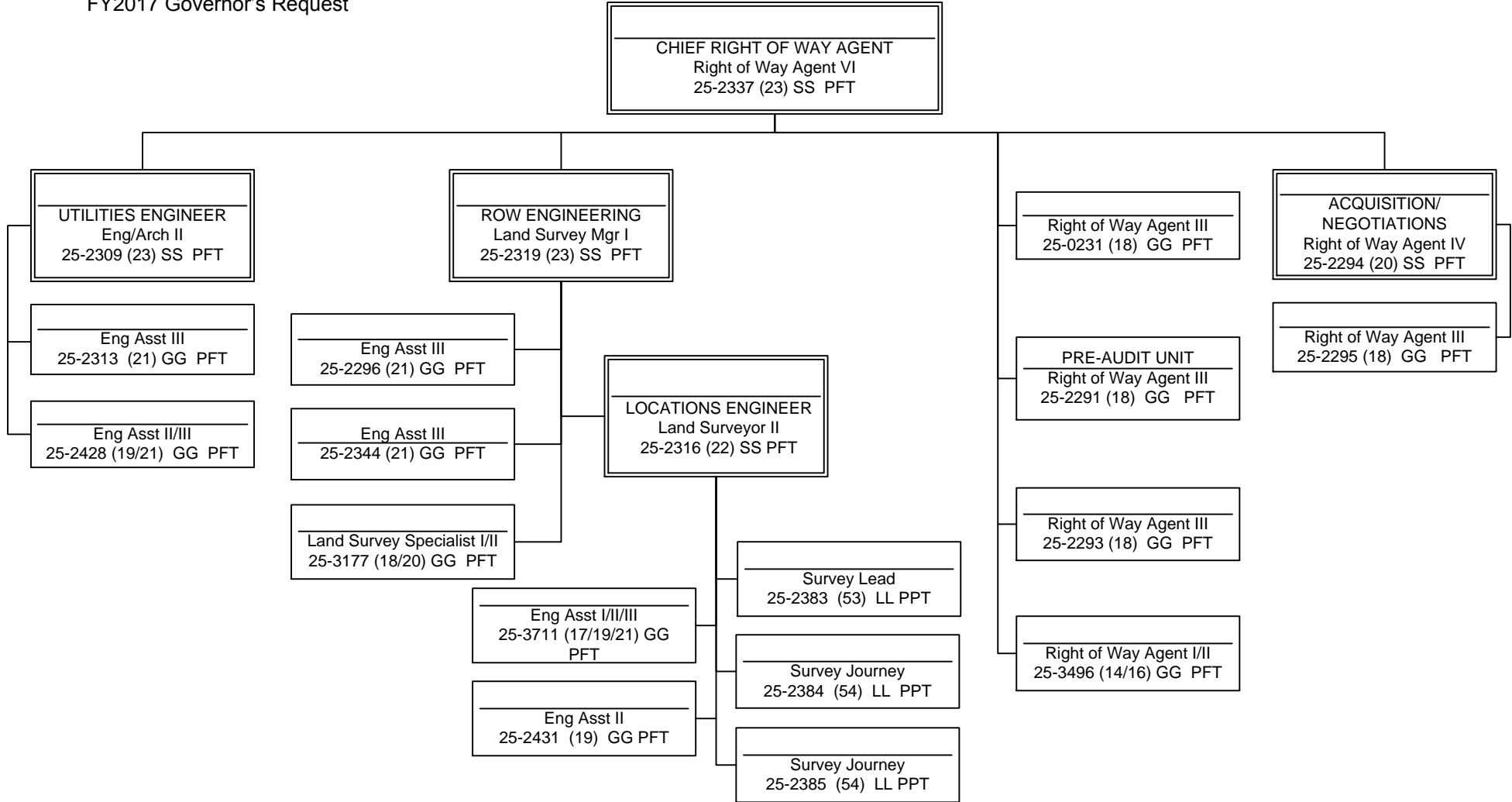


CHART 5

Positions	Total
Full-Time	17
Seasonal	3
Total	20

Department of Transportation and Public Facilities
 RDU: Design, Engineering and Construction
 Component: Southcoast Region Design and Engineering Services (2300)
 FY2017 Governor's Request

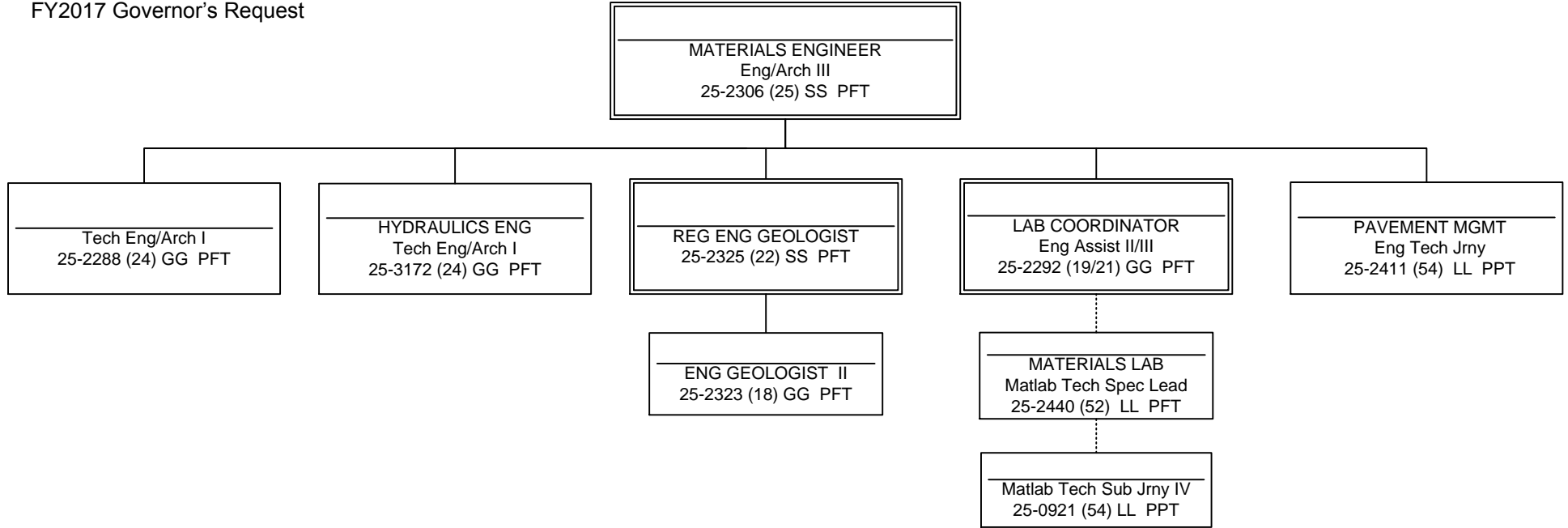
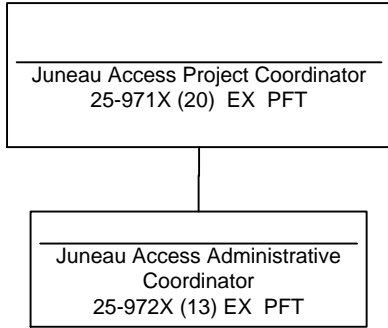


CHART 6

Positions	Total
Full-Time	7
Seasonal	2
Total	9

Department of Transportation and Public Facilities
 RDU: Design, Engineering and Construction
 Component: Southcoast Region Design and Engineering Services (2300)
 FY2017 Governor's Request

SPECIAL PROJECTS



NONPERMANENT POSITIONS – Assigned As Needed

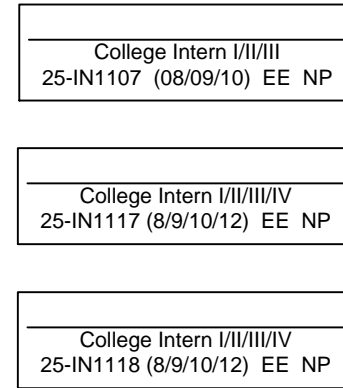


CHART 7

Positions	Total
Full-Time	2
Seasonal	0
Non Permanent	3
Total	6