

Director
 PCN 08-5055
 Anchorage - PFT
 Range 27 - XE

Secretary
 PCN 08-5060
 Anchorage - PFT
 Range 11 - GP

Chief Weights,
 Measures & Permits
 PCN 08-5056
 Anchorage - PFT
 Range 22 - SS
 see page 2

Admin. Officer I
 PCN 08-5062
 Anchorage - PFT
 Range 17 - SS

Chief Weights,
 Measures & Permits
 PCN 08-5048
 Anchorage - PFT
 Range 22 - SS

Program
 Coordinator II
 PCN 25-3383
 Anchorage - PFT
 Range 20 - SS

Accountant III
 PCN 08-5031
 Anchorage - PFT
 Range 18 - GP

Meas. Standard
 Supervisor
 PCN 25-3740
 Anchorage - PFT
 Range 18 - SS

State Metrologist II
 PCN 08-5044
 Anchorage - PFT
 Range 18 - GP

State Metrologist I
 PCN 25-3380
 Anchorage - PFT
 Range 16 - GP

Planner III
 PCN 25-3371
 Anchorage - PFT
 Range 19 - GP

Admin. Assistant II
 PCN 08-5065
 Anchorage - PFT
 Range 14 - GP

W&M Insp. II
 PCN 08-5006
 Anchorage - PFT
 Range 16 - GP

W&M Insp. II
 PCN 08-5039
 Juneau - PFT
 Range 16 - GP

Planner II
 PCN 25-3413
 Anchorage - PFT
 Range 17 - GP

Accounting Tech. I
 PCN 08-5070
 Anchorage - PFT
 Range 12 - GP

W&M Insp. Trne
 PCN 25-3793
 (Flex Trainee/I)
 Anchorage - PFT
 Range 12 - GP

W&M Insp. I
 PCN 08-5001
 (Flex Trainee/I)
 Juneau - PFT
 Range 14 - GP

Research Analyst II
 PCN 25-3483
 Anchorage - PFT
 Range 16 - GP

Office Assistant II
 PCN 08-5058
 Anchorage - PFT
 Range 10 - GP

W&M Insp. I
 PCN 08-5032
 (Flex Trainee/I)
 Anchorage - PFT
 Range 14 - GP

W&M Insp. II
 PCN 08-5038
 Fairbanks - PFT
 Range 16 - GP

W&M Insp. Trne
 PCN 08-5005
 (Flex Trainee/I)
 Anchorage - PFT
 Range 12 - GP

W&M Insp. II
 PCN 08-5043
 (Flex Trainee/I/II)
 Anchorage - PFT
 Range 16 - GP

W&M Insp. II
 PCN 08-5096
 Anchorage - PFT
 Range 16 - GP

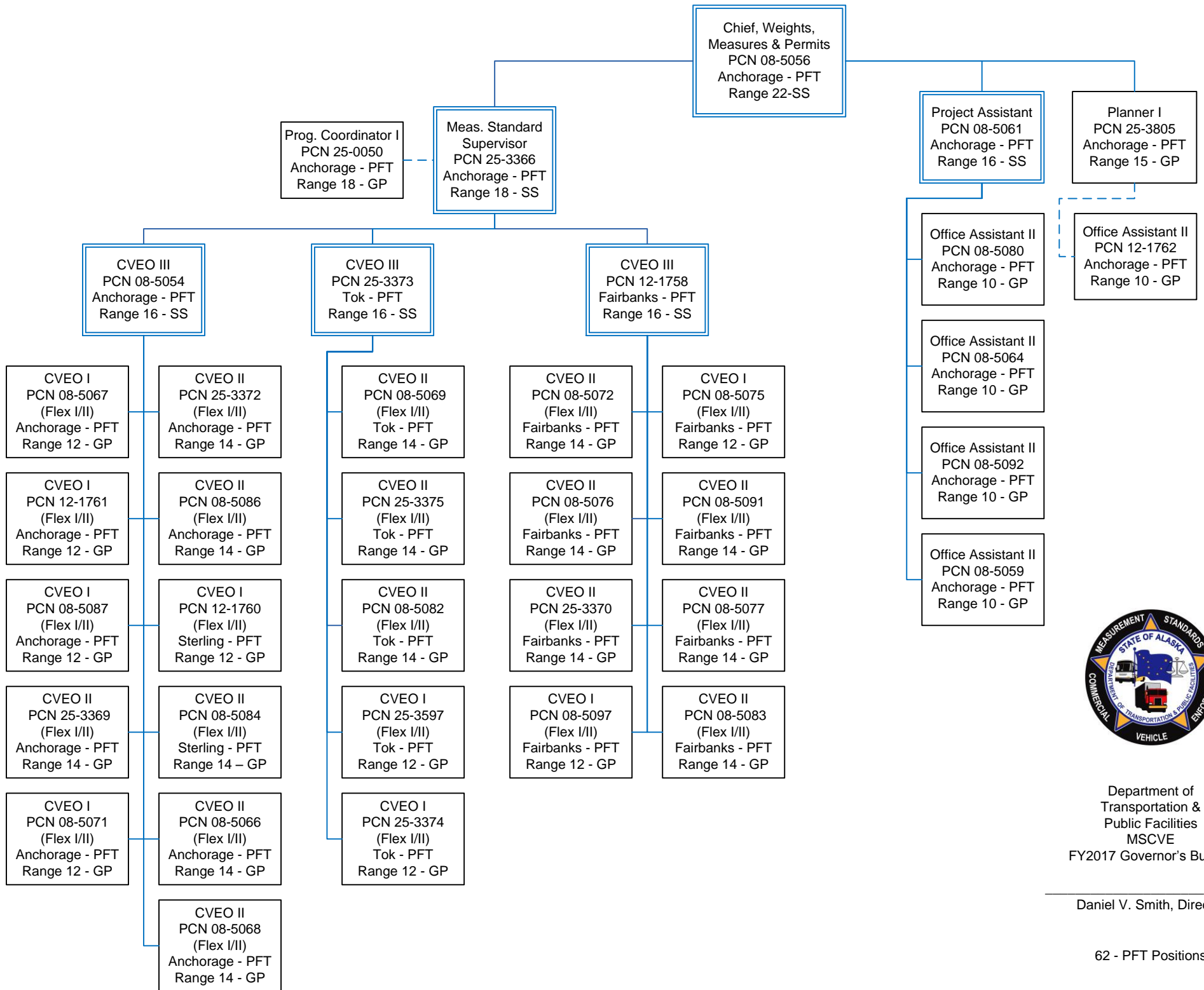
W&M Insp. II
 PCN 08-5095
 (Flex Trainee/I/II)
 Anchorage - PFT
 Range 16 - GP



Department of
 Transportation &
 Public Facilities
 MSCVE
 FY2017 Governor's Budget

Daniel V. Smith Director

62 - PFT Positions



Department of
Transportation &
Public Facilities
MSCVE
FY2017 Governor's Budget

Daniel V. Smith, Director