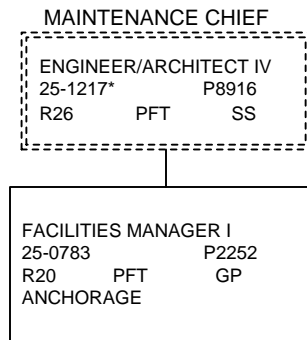


DEPARTMENT OF TRANSPORTATION & PUBLIC FACILITIES  
RDU: HIGHWAYS, AVIATION, AND FACILITIES  
COMPONENT: WHITTIER ACCESS AND TUNNEL (2510)  
FY2017 GOVERNOR'S BUDGET

COMPONENT TOTAL:	
FULLTIME POSITIONS:	1
PARTTIME POSITIONS:	0
NONPERM POSITIONS:	0
TOTAL	1



\*PCN 25-1217 is budgeted in the Central Region Highways and Aviation budget component