

DEPARTMENT OF TRANSPORTATION AND PUBLIC FACILITIES

RDU: ADMINISTRATION AND SUPPORT (333)

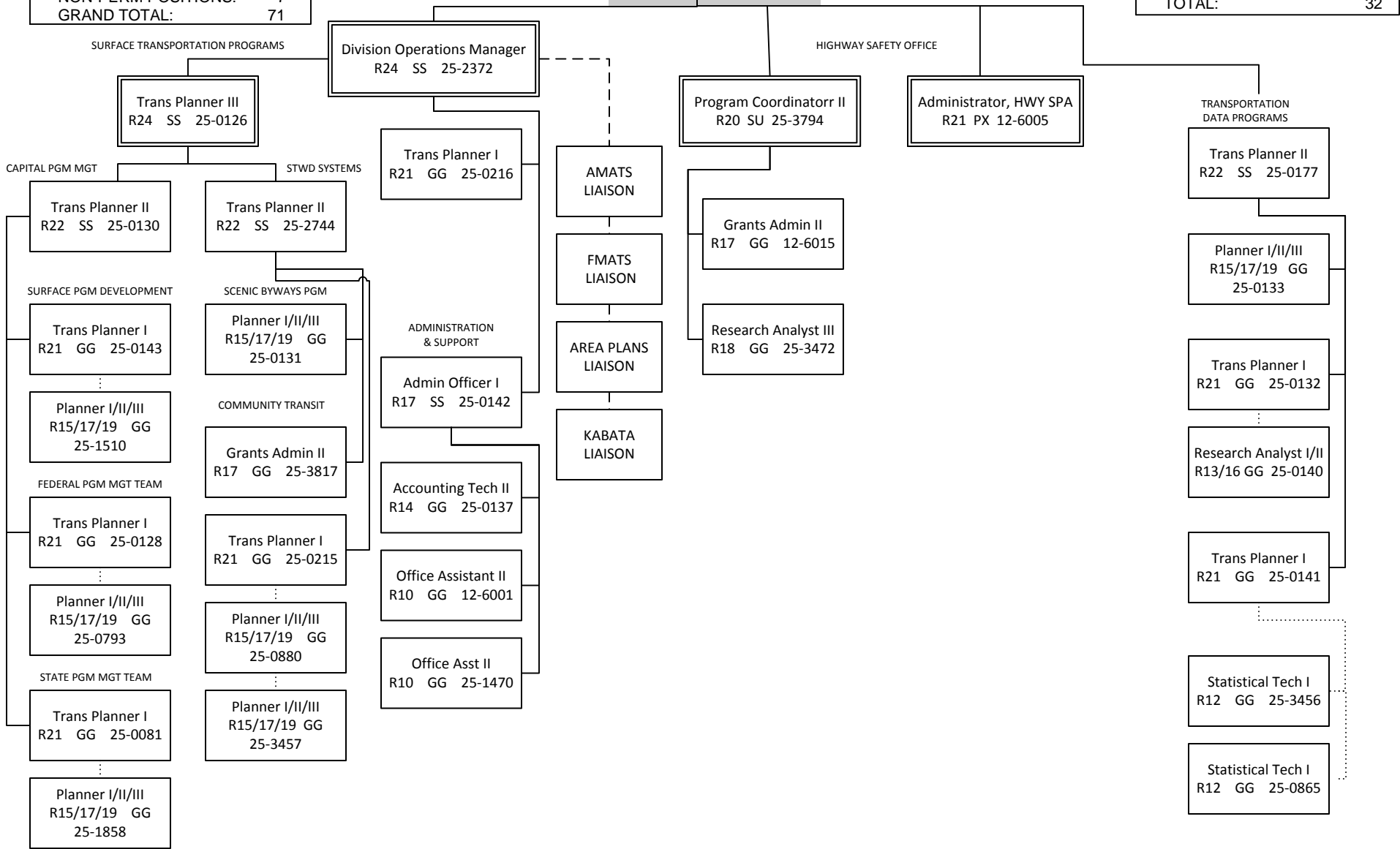
COMPONENT: PROGRAM DEVELOPMENT (2762)

FY2017 GOVERNOR'S BUDGET

COMPONENT TOTAL:
 FULL-TIME POSITIONS: 64
 PART-TIME POSITIONS: 0
 NON-PERM POSITIONS: 7
 GRAND TOTAL: 71

HEADQUARTERS TOTAL:
 FULL-TIME POSITIONS: 32
 PART-TIME POSITIONS: 0
 NON-PERM POSITIONS: 0
 TOTAL: 32

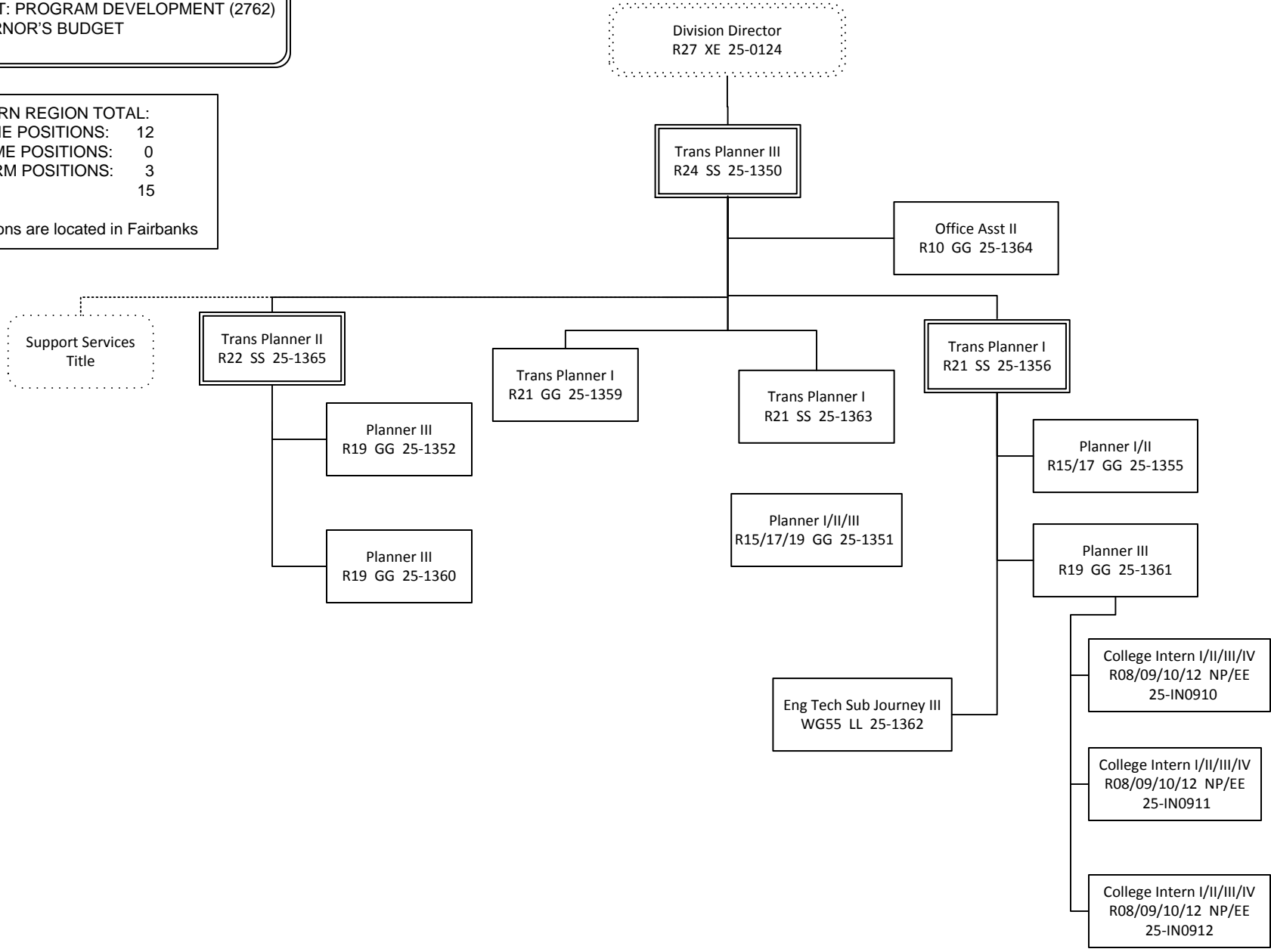
Division Director
 R27 XE 25-0124



DEPARTMENT OF TRANSPORTATION AND
PUBLIC FACILITIES
RDU: ADMINISTRATION AND SUPPORT (333)
COMPONENT: PROGRAM DEVELOPMENT (2762)
FY17 GOVERNOR'S BUDGET

NORTHERN REGION TOTAL:
FULL-TIME POSITIONS: 12
PART-TIME POSITIONS: 0
NON-PERM POSITIONS: 3
TOTAL: 15

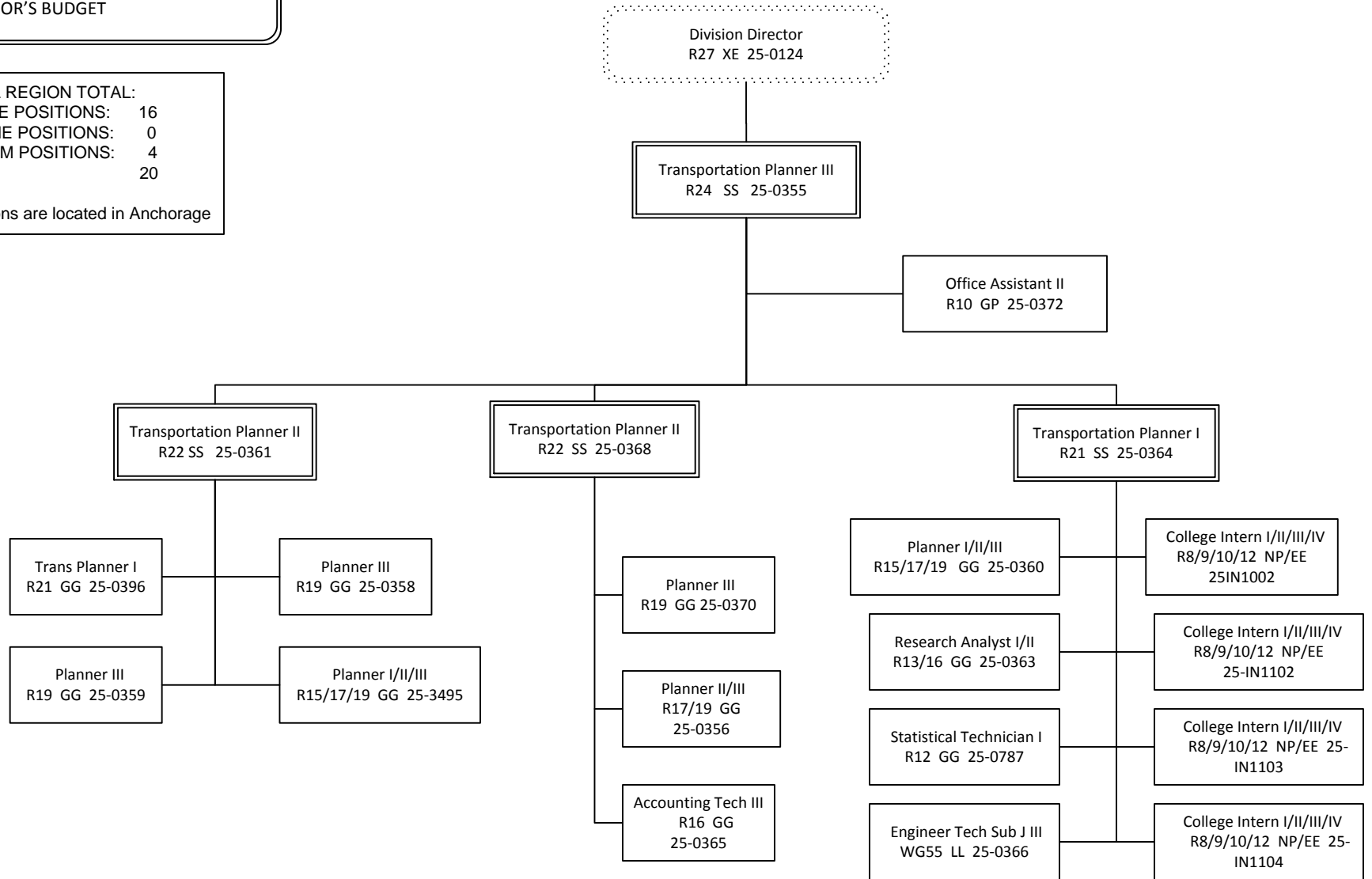
*All positions are located in Fairbanks



DEPARTMENT OF TRANSPORTATION AND PUBLIC FACILITIES
 RDU: ADMINISTRATION AND SUPPORT (333)
 COMPONENT: PROGRAM DEVELOPMENT (3762)
 FY17 GOVERNOR'S BUDGET

CENTRAL REGION TOTAL:
 FULL-TIME POSITIONS: 16
 PART-TIME POSITIONS: 0
 NON-PERM POSITIONS: 4
 TOTAL: 20

*All positions are located in Anchorage



DEPARTMENT OF TRANSPORTATION AND
PUBLIC FACILITIES
RDU: ADMINISTRATION AND SUPPORT (333)
COMPONENT: PROGRAM DEVELOPMENT (2762)
FY17 GOVERNOR'S BUDGET

SOUTHCOAST REGION TOTAL:
FULL-TIME POSITIONS: 4
PART-TIME POSITIONS: 0
NON-PERM POSITIONS: 0
TOTAL: 4

*All positions are located in Juneau

