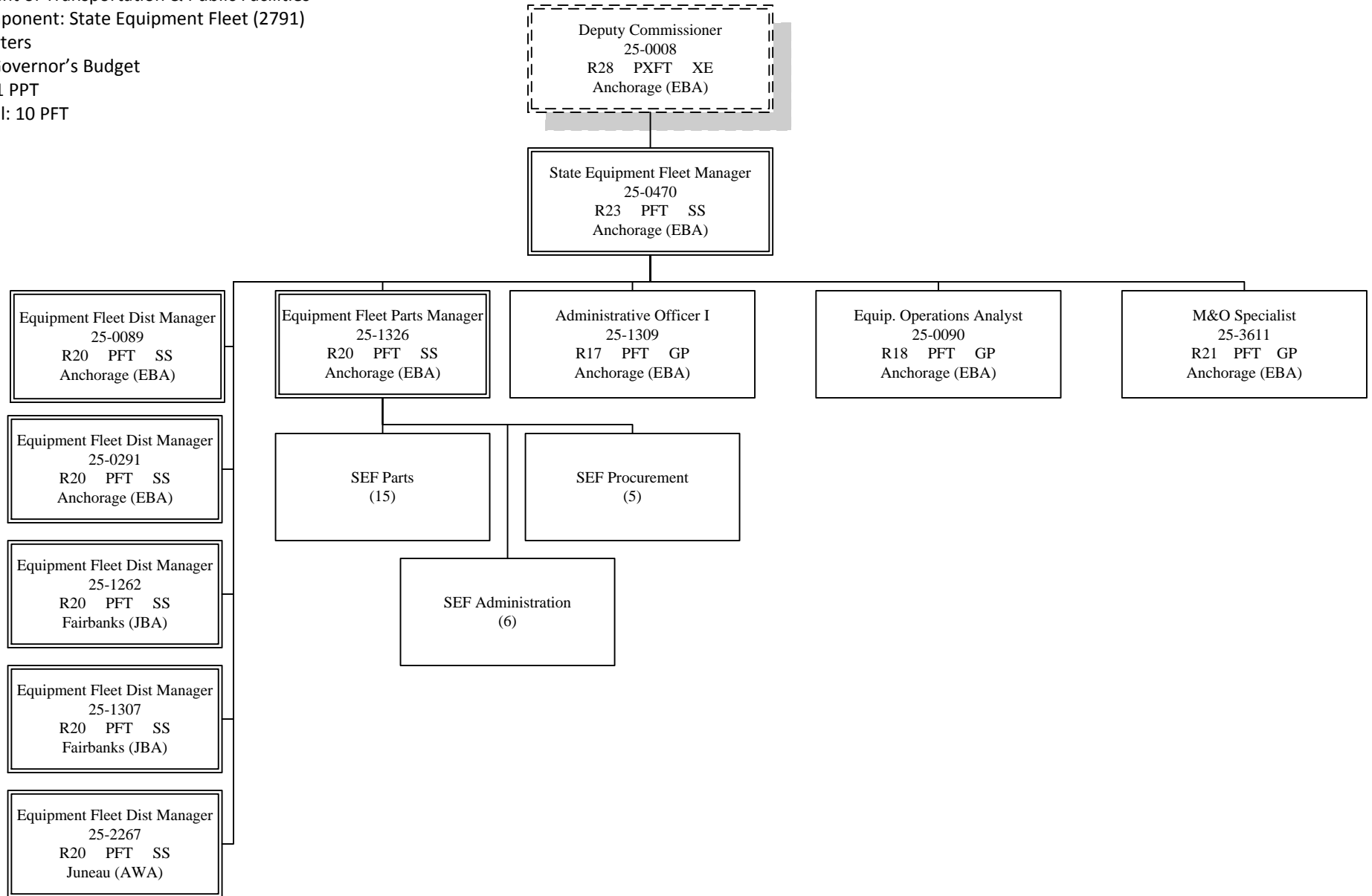
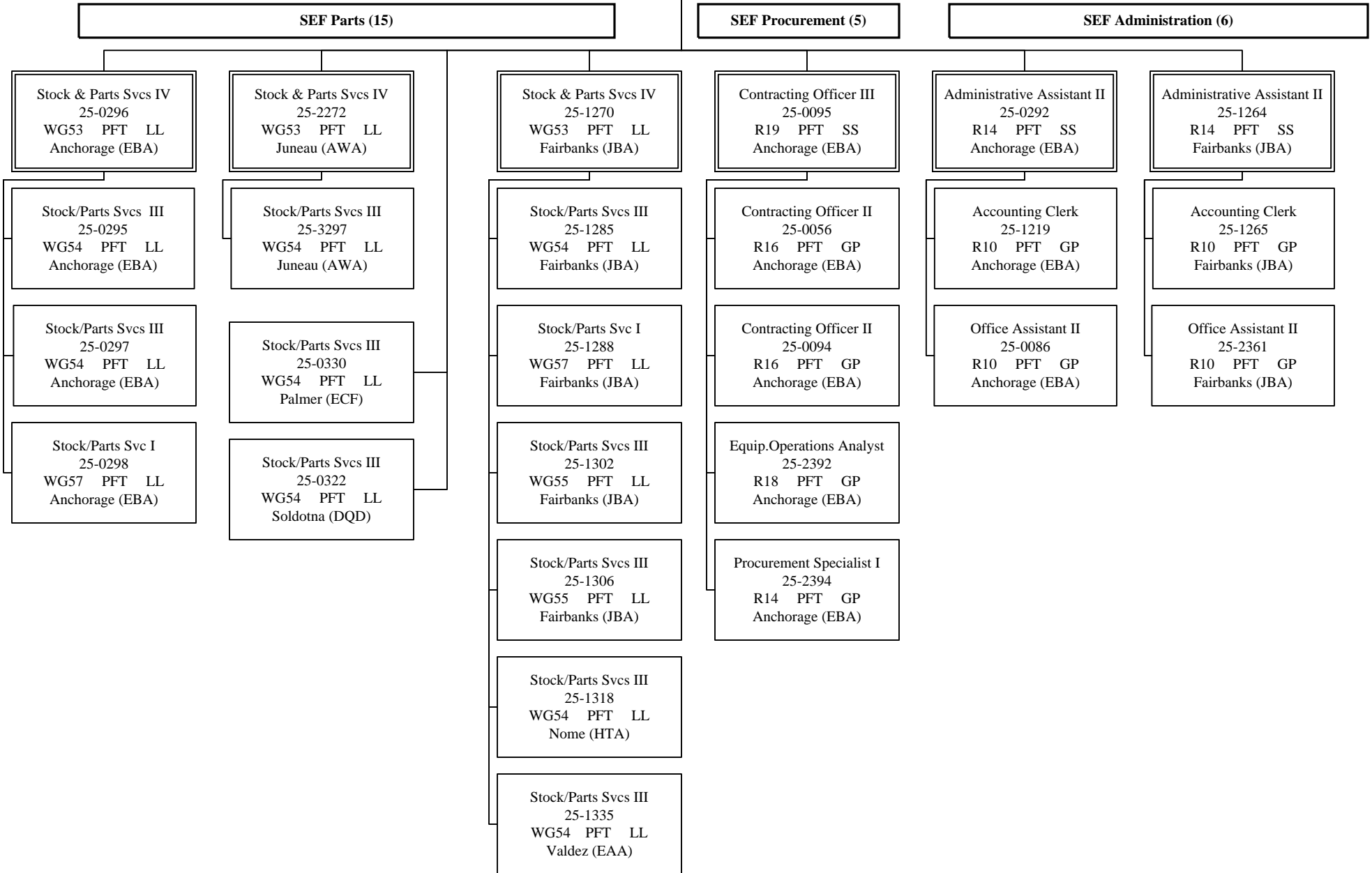


Department of Transportation & Public Facilities
 RDU/Component: State Equipment Fleet (2791)
 Headquarters
 FY2017 Governor's Budget
 164 PFT, 1 PPT
 Page Total: 10 PFT



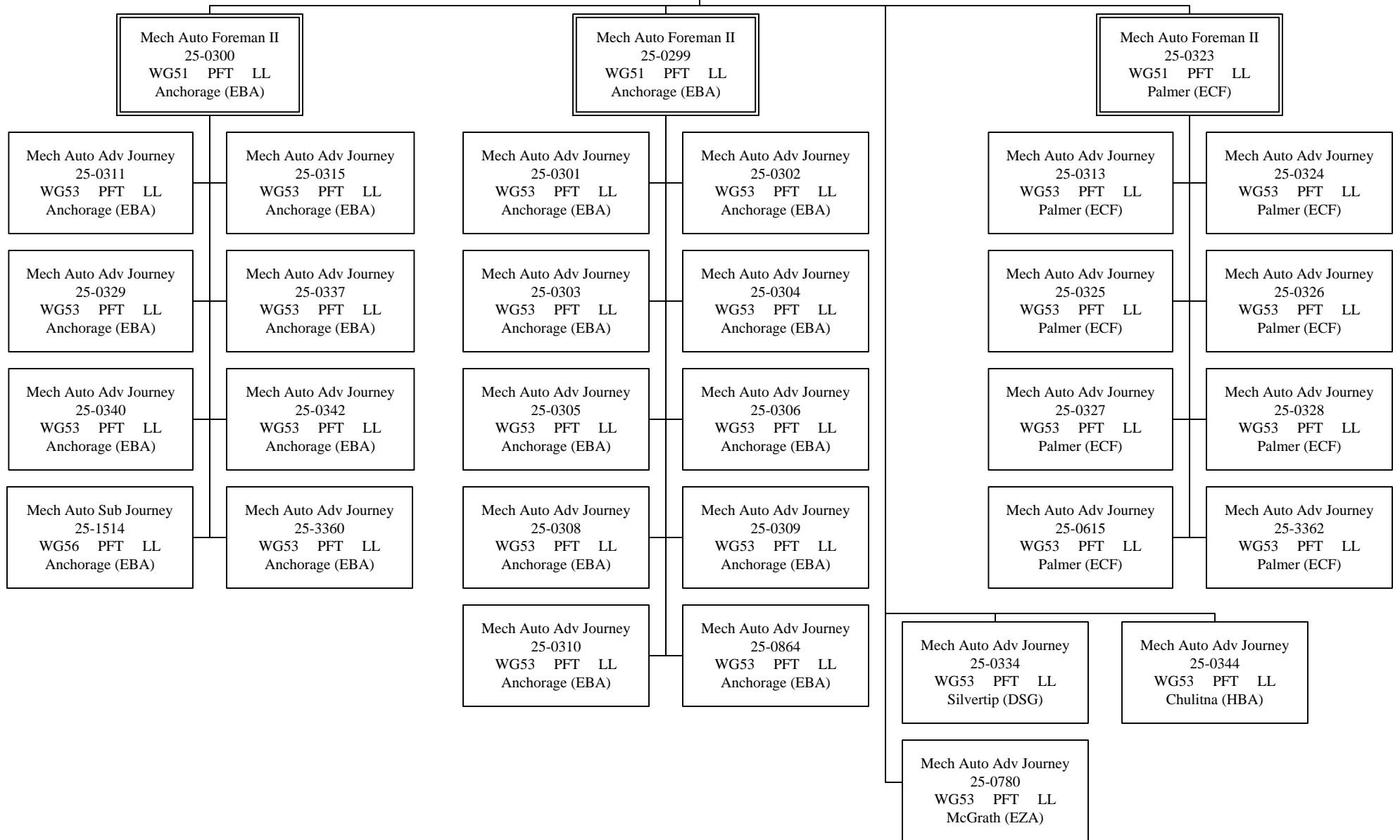
Equipment Fleet Parts Manager
 25-1326
 R20 PFT SS
 Anchorage (EBA)

State Equipment Fleet Manager
 25-0470
 R23 PFT SS
 Anchorage (EBA)



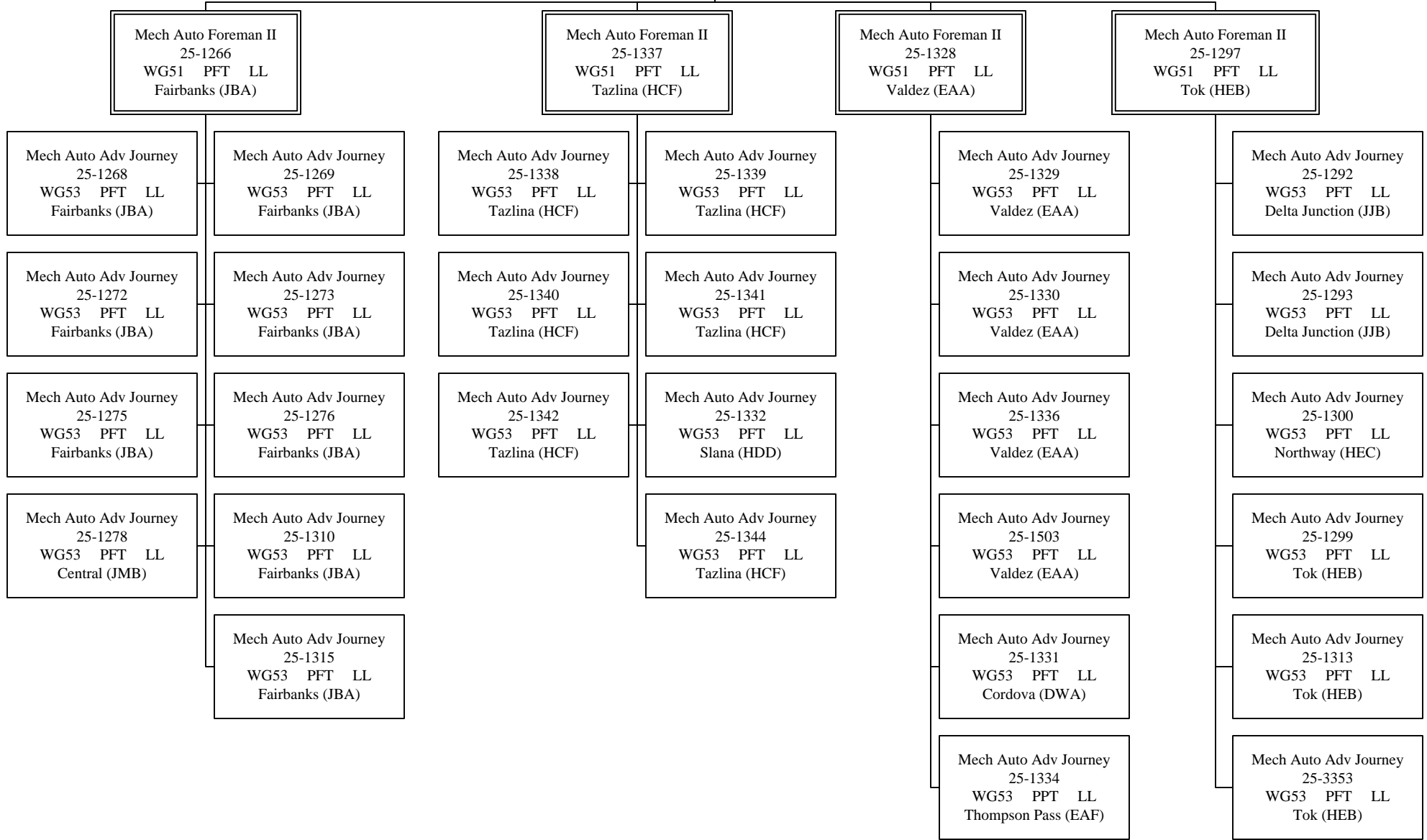
Equipment Fleet Dist Manager
 25-0089
 R20 PFT SS
 Anchorage (EBA)

State Equipment Fleet Manager
 25-0470
 R23 PFT SS
 Anchorage (EBA)



Equipment Fleet Dist Manager
 25-1262
 R20 PFT SS
 Fairbanks (JBA)

State Equipment Fleet Manager
 25-0470
 R23 PFT SS
 Anchorage (EBA)



Equipment Fleet Dist Manager
 25-1307
 R20 PFT SS
 Fairbanks (EBA)

State Equipment Fleet Manager
 25-0470
 R23 PFT SS
 Anchorage (EBA)

