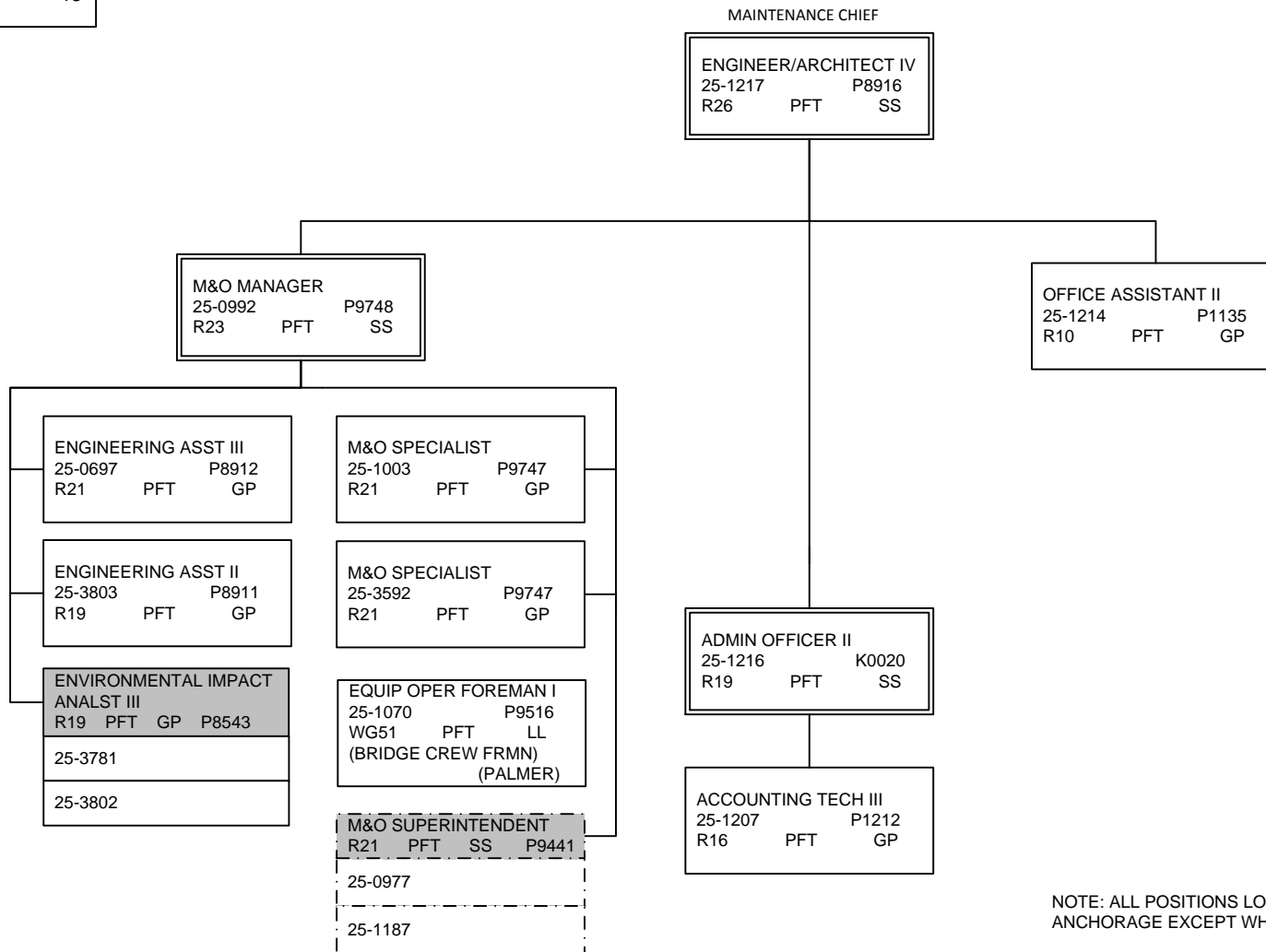


DEPARTMENT OF TRANSPORTATION AND PUBLIC FACILITIES  
 RDU: HIGHWAYS, AVIATION AND FACILITIES  
 COMPONENT: CENTRAL REGION HIGHWAYS & AVIATION (564)  
 FY2017 GOVERNOR'S BUDGET

**MAINTENANCE &  
 OPERATIONS  
 ADMINISTRATION  
 Anchorage**

COMPONENT TOTAL:	185
FULLTIME POSITIONS:	167
PARTTIME POSITIONS:	4
NONPERM POSITIONS:	14
PAGE TOTAL:	13
FULLTIME POSITIONS:	13

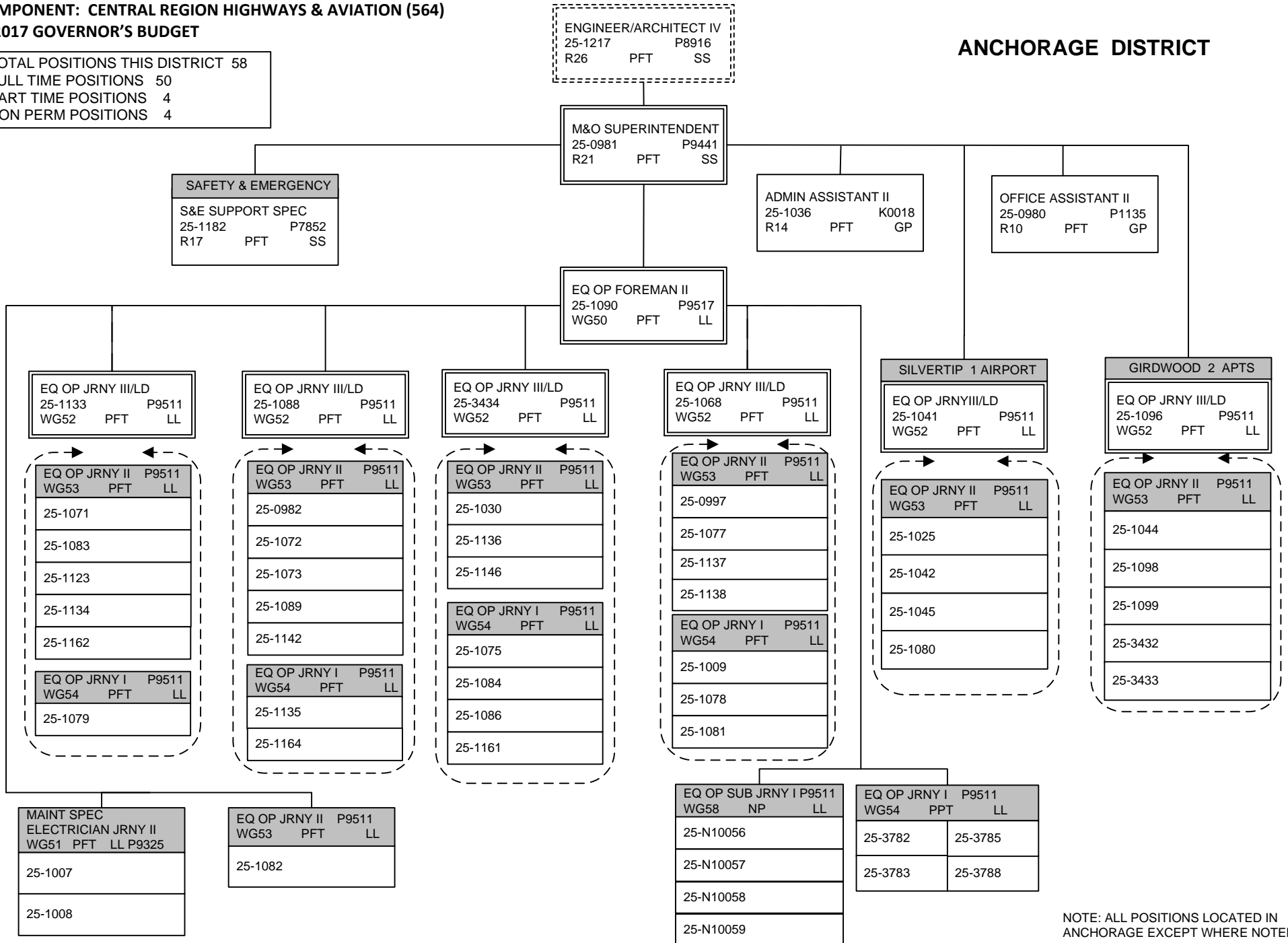


NOTE: ALL POSITIONS LOCATED IN ANCHORAGE EXCEPT WHERE NOTED.

**DEPARTMENT OF TRANSPORTATION AND PUBLIC FACILITIES**  
**RDU: HIGHWAYS, AVIATION AND FACILITIES**  
**COMPONENT: CENTRAL REGION HIGHWAYS & AVIATION (564)**  
**FY2017 GOVERNOR'S BUDGET**

TOTAL POSITIONS THIS DISTRICT 58  
 FULL TIME POSITIONS 50  
 PART TIME POSITIONS 4  
 NON PERM POSITIONS 4

**ANCHORAGE DISTRICT**



NOTE: ALL POSITIONS LOCATED IN ANCHORAGE EXCEPT WHERE NOTED.

\* PCN 25-1099: Works under supervision of PCN 25-1070 Bridge for 6-months of the year and under supervision of PCN 25-1182 Avalanche for 6-months

**DEPARTMENT OF TRANSPORTATION AND PUBLIC FACILITIES**  
**RDU: HIGHWAYS, AVIATION AND FACILITIES**  
**COMPONENT: CENTRAL REGION HIGHWAYS & AVIATION (564)**  
**FY2017 GOVERNOR'S BUDGET**

**MATSU DISTRICT**

TOTAL POSITIONS THIS DISTRICT 42  
 FULL TIME POSITIONS 38  
 NON PERM POSITIONS 4

M&O MANAGER  
 25-0992 P9748  
 R23 PFT SS

M&O SUPERINTENDENT  
 25-1187 P9441  
 R21 PFT SS

MAINT SPEC ELECTRICIAN JRNY II  
 P9325  
 WG51 PFT LL (DISTRICTWIDE)  
 25-0549  
 25-1102

EQUIP OPER FOREMAN I  
 25-1070 P9516  
 WG51 PFT LL  
 I (BRIDGE CREW FRMN)

ACCT TECH II  
 25-0979 P1211  
 R14 PFT GP

OFFICE ASSISTANT II  
 25-0935 P1135  
 R10 PFT GP

CASCADE 1 AIRPORT  
 EQ OP JRNY III/LD  
 25-1109 P9511  
 WG52 PFT LL

CHULITNA 0 AIRPORTS  
 EQ OP JRNY III/LD  
 25-1104 P9511  
 WG52 PFT LL

PALMER 3 AIRPORTS  
 EQ OP FRMN I  
 25-1046 P9516  
 WG51 PFT LL

MCGRATH 6 AIRPORTS  
 EQ OP FRMN I  
 25-1150 P9516  
 WG51 PFT LL (A)

TALKEETNA 1 AIRPORT  
 EQ OP JRNY III/LD  
 25-1143 P9511  
 WG52 PFT LL (A)

WILLOW 1 AIRPORT  
 EQ OP JRNY III/LD  
 25-1100 P9511  
 WG52 PFT LL

EQ OP JRNY II P9511  
 WG53 PFT LL  
 25-1110  
 25-1111\*  
 25-1112

EQ OP JRNY II P9511  
 WG53 PFT LL  
 25-1050  
 25-1107  
 25-1108  
 25-3649

EQ OP JRNY III/LD P9511  
 WG52 PFT LL  
 EQ OP JRNY II P9511  
 WG53 PFT LL  
 25-0985 25-1057  
 25-1037 25-1105  
 25-1047 25-1129  
 25-1048 25-1165  
 25-1052 25-1166  
 25-1053 25-3773  
 25-1056 25-3774

EQ OP JRNY II P9511  
 WG53 PFT LL  
 25-1106

EQ OP JRNY II P9511  
 WG53 PFT LL  
 25-1101  
 25-1103  
 25-1167  
 25-3052

EQ OP SUB JRNY I P9511  
 WG58 NP LL  
 25-N09025 25-N09026  
 25-N09027 25-N09028

\*Temporary upgrade to  
 Equipment Operator Foreman I  
 (WG51) per Letter of Agreement  
 15-LL-238

NOTE: ALL POSITIONS LOCATED IN PALMER EXCEPT WHERE NOTED.  
 (A) AIRPORT

DEPARTMENT OF TRANSPORTATION AND PUBLIC FACILITIES  
 RDU: HIGHWAYS, AVIATION AND FACILITIES  
 COMPONENT: CENTRAL REGION HIGHWAYS & AVIATION (564)  
 FY2017 GOVERNOR'S BUDGET

**PENINSULA DISTRICT**

TOTAL POSITIONS THIS DISTRICT 49  
 FULL TIME POSITIONS 43  
 NON PERM POSITIONS 6

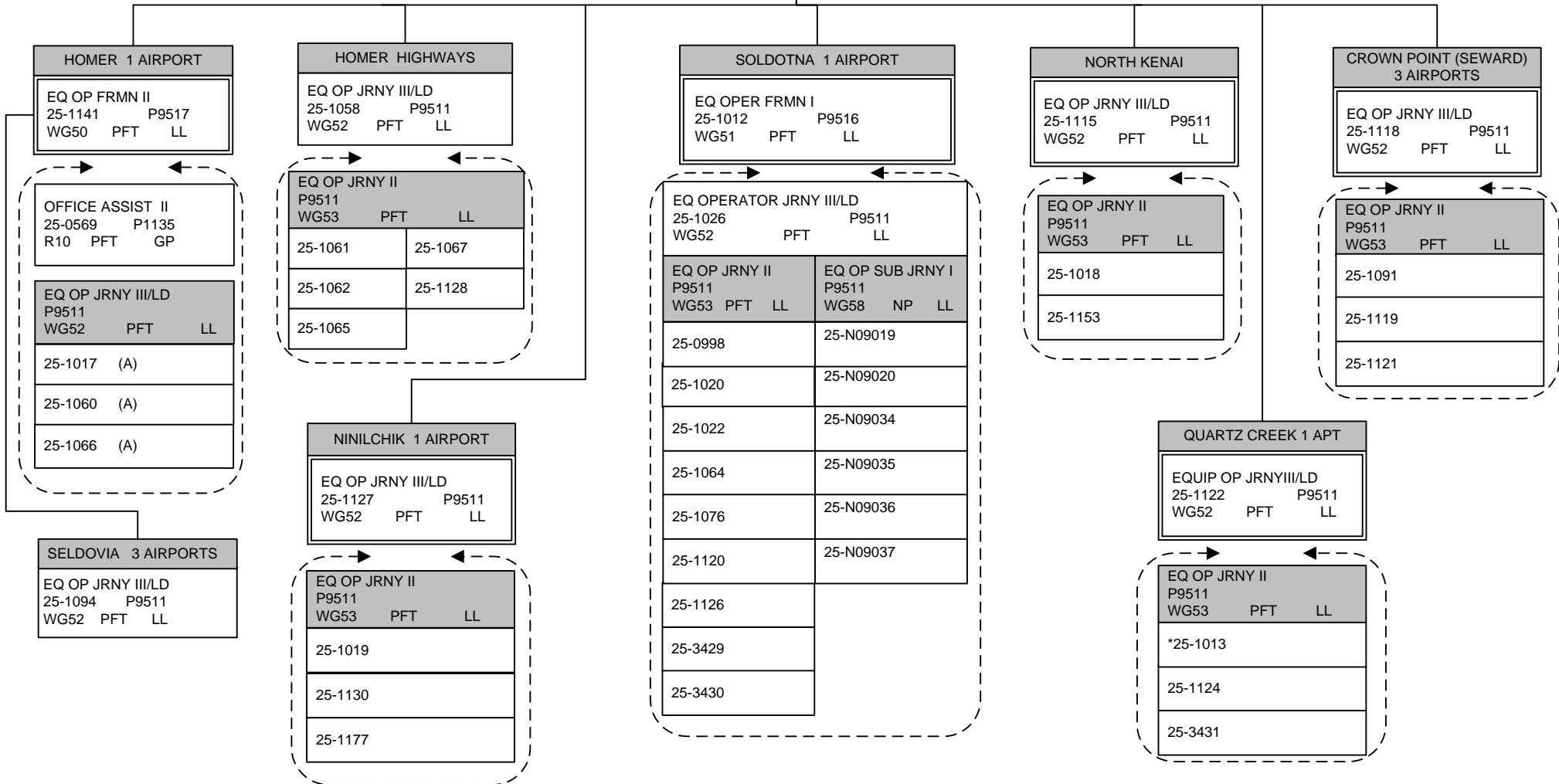
M&O MANAGER		
25-0992	P9748	
R23	PFT	SS

M&O SUPERINTENDENT		
25-0977	P9441	
R21	PFT	SS

MTN SPEC ELECTRICIAN JRNY II			
P9325	WG51	PFT	LL
(DISTRICTWIDE)			
25-0565			
25-1021			

ACCOUNTING TECH II		
25-1010	P1211	
R14	PFT	GG

OFFICE ASSISTANT II		
25-0983	P1135	
R10	PFT	GP



HOMER 1 AIRPORT		
EQ OP FRMN II	P9517	
25-1141	PFT	LL

HOMER HIGHWAYS		
EQ OP JRNY III/LD	P9511	
25-1058	PFT	LL
WG52		

SOLDOTNA 1 AIRPORT		
EQ OPER FRMN I	P9516	
25-1012	PFT	LL
WG51		

NORTH KENAI		
EQ OP JRNY III/LD	P9511	
25-1115	PFT	LL
WG52		

CROWN POINT (SEWARD) 3 AIRPORTS		
EQ OP JRNY III/LD	P9511	
25-1118	PFT	LL
WG52		

OFFICE ASSIST II		
25-0569	P1135	
R10	PFT	GP
EQ OP JRNY III/LD		
P9511	PFT	LL
WG52		
25-1017 (A)		
25-1060 (A)		
25-1066 (A)		

EQ OP JRNY II		
P9511	PFT	LL
WG53		
25-1061		
25-1067		
25-1062		
25-1128		
25-1065		

EQ OPERATOR JRNY III/LD		
25-1026	P9511	
WG52	PFT	LL
EQ OP JRNY II		EQ OP SUB JRNY I
P9511	PFT	LL
WG53		WG58 NP LL
25-0998		
25-1020		25-N09019
25-1022		25-N09020
25-1026		25-N09034
25-1064		25-N09035
25-1076		25-N09036
25-1120		25-N09037
25-1126		
25-3429		
25-3430		

EQ OP JRNY II		
P9511	PFT	LL
WG53		
25-1018		
25-1153		

EQ OP JRNY II		
P9511	PFT	LL
WG53		
25-1091		
25-1119		
25-1121		

NINILCHIK 1 AIRPORT		
EQ OP JRNY III/LD	P9511	
25-1127	PFT	LL
WG52		

SELDOVIA 3 AIRPORTS		
EQ OP JRNY III/LD	P9511	
25-1094	PFT	LL
WG52		

EQ OP JRNY II		
P9511	PFT	LL
WG53		
25-1019		
25-1130		
25-1177		

QUARTZ CREEK 1 APT		
EQUIP OP JRNYIII/LD	P9511	
25-1122	PFT	LL
WG52		

EQ OP JRNY II		
P9511	PFT	LL
WG53		
*25-1013		
25-1124		
25-3431		

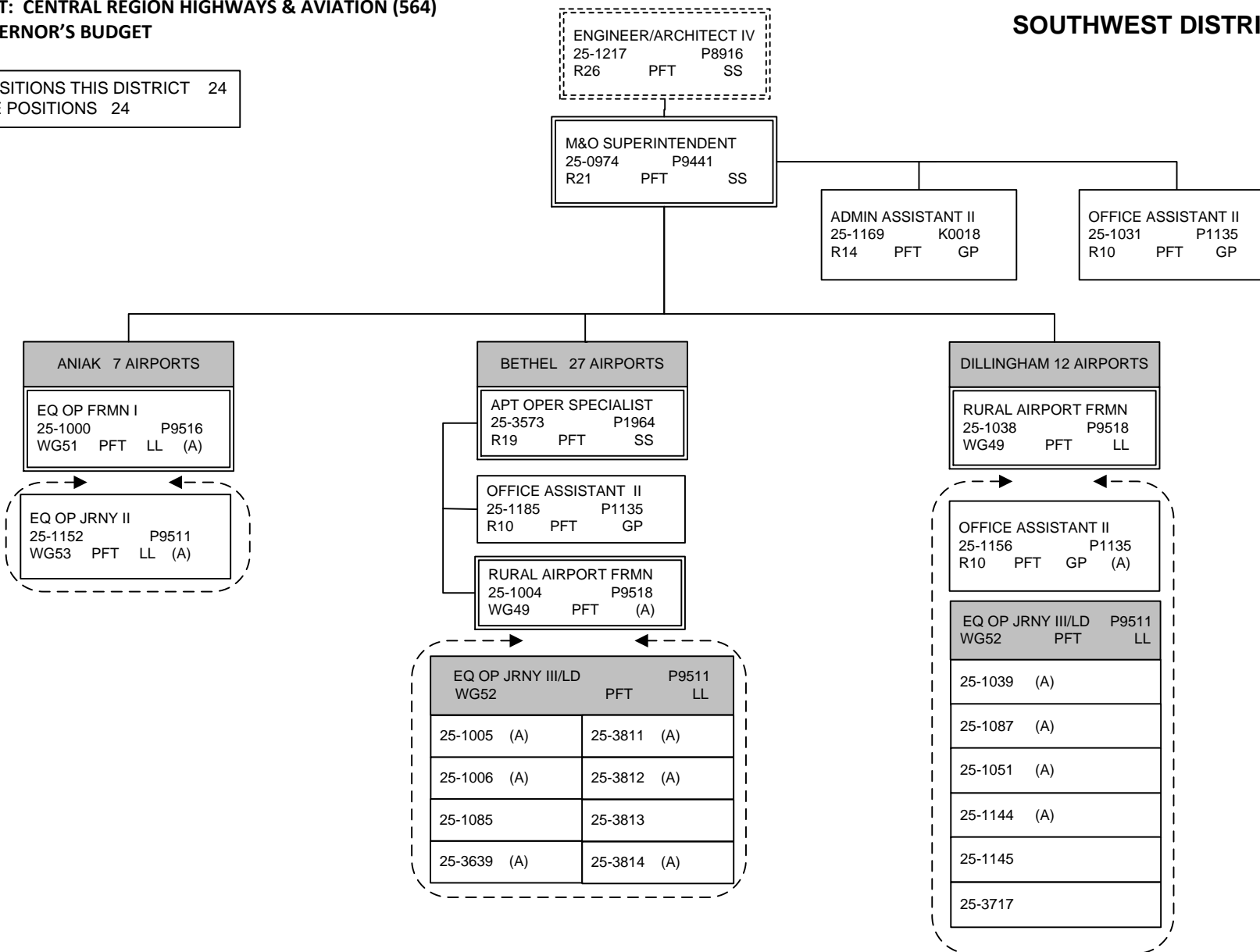
NOTE: ALL POSITIONS LOCATED IN SOLDOTNA EXCEPT WHERE NOTED.

SEASONAL CREW  
 \* Bridge Crew  
 (A) AIRPORT

DEPARTMENT OF TRANSPORTATION AND PUBLIC FACILITIES  
 RDU: HIGHWAYS, AVIATION AND FACILITIES  
 COMPONENT: CENTRAL REGION HIGHWAYS & AVIATION (564)  
 FY2017 GOVERNOR'S BUDGET

SOUTHWEST DISTRICT

TOTAL POSITIONS THIS DISTRICT 24  
 FULL TIME POSITIONS 24



NOTE: POSITIONS LOCATED IN ANCHORAGE  
 EXCEPT WHERE NOTED.

(A) AIRPORT