

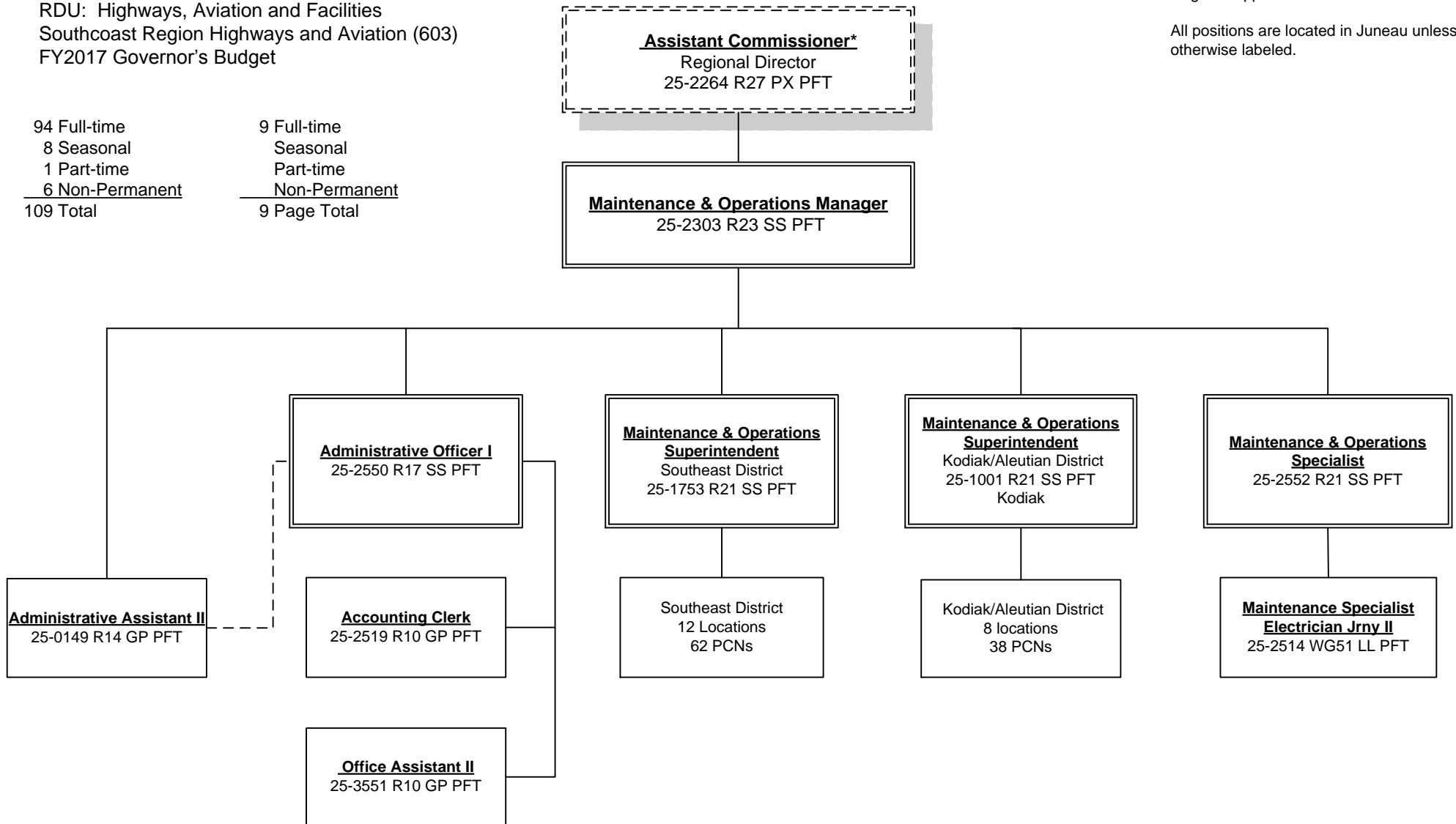
Department of Transportation and Public Facilities  
 RDU: Highways, Aviation and Facilities  
 Southcoast Region Highways and Aviation (603)  
 FY2017 Governor's Budget

PCN 25-2264 is budgeted in Southcoast  
 Region Support Services

All positions are located in Juneau unless  
 otherwise labeled.

94 Full-time  
 8 Seasonal  
 1 Part-time  
 6 Non-Permanent  
 109 Total

9 Full-time  
 Seasonal  
 Part-time  
 Non-Permanent  
 9 Page Total

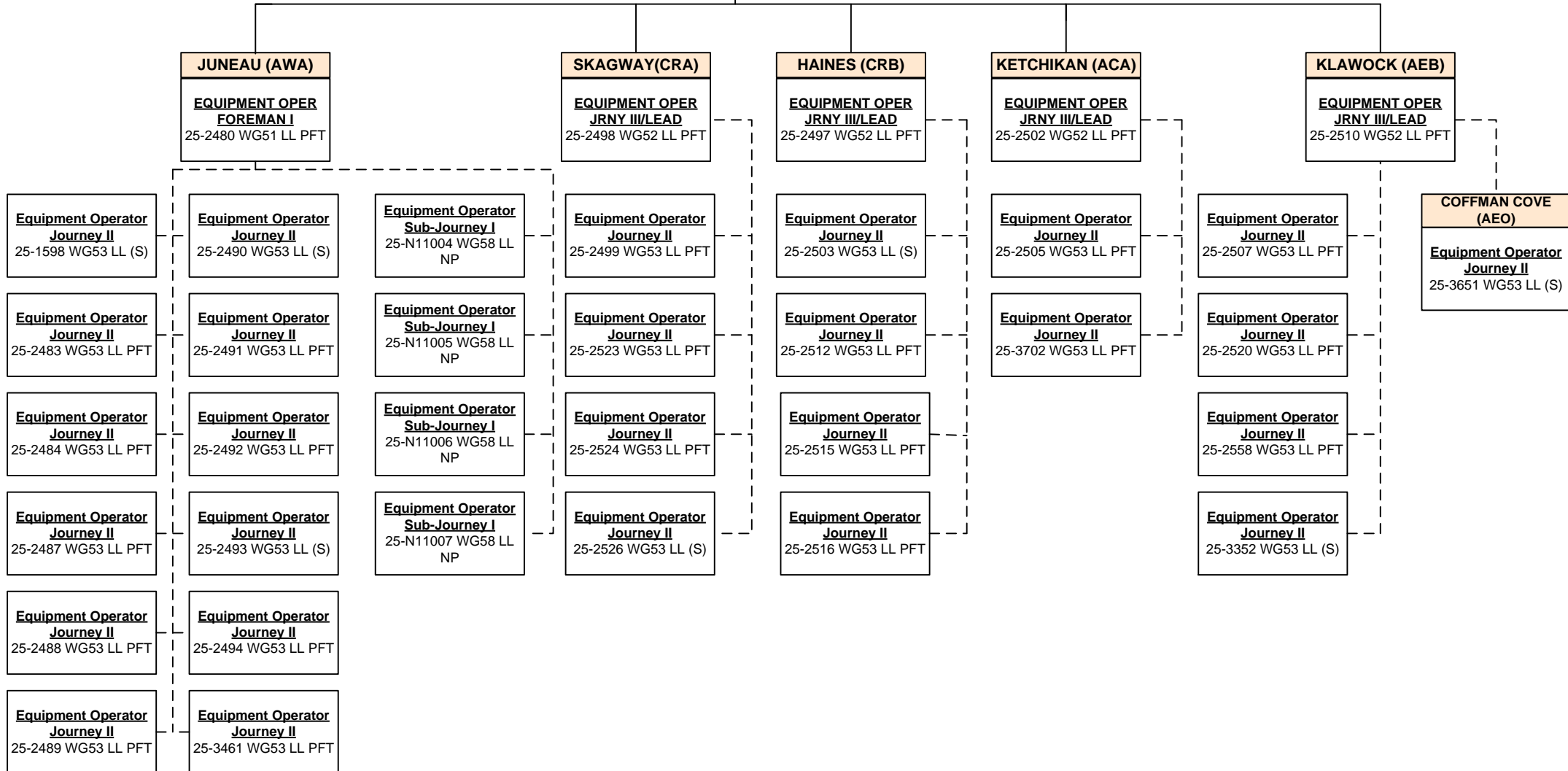


Department of Transportation and Public Facilities  
 RDU: Highways, Aviation and Facilities  
 Southcoast Region Highways and Aviation (603)  
 FY2017 Governor's Budget

25 Full-time  
 7 Seasonal  
 Part-time  
 4 Non-Permanent  
 36 Page Total

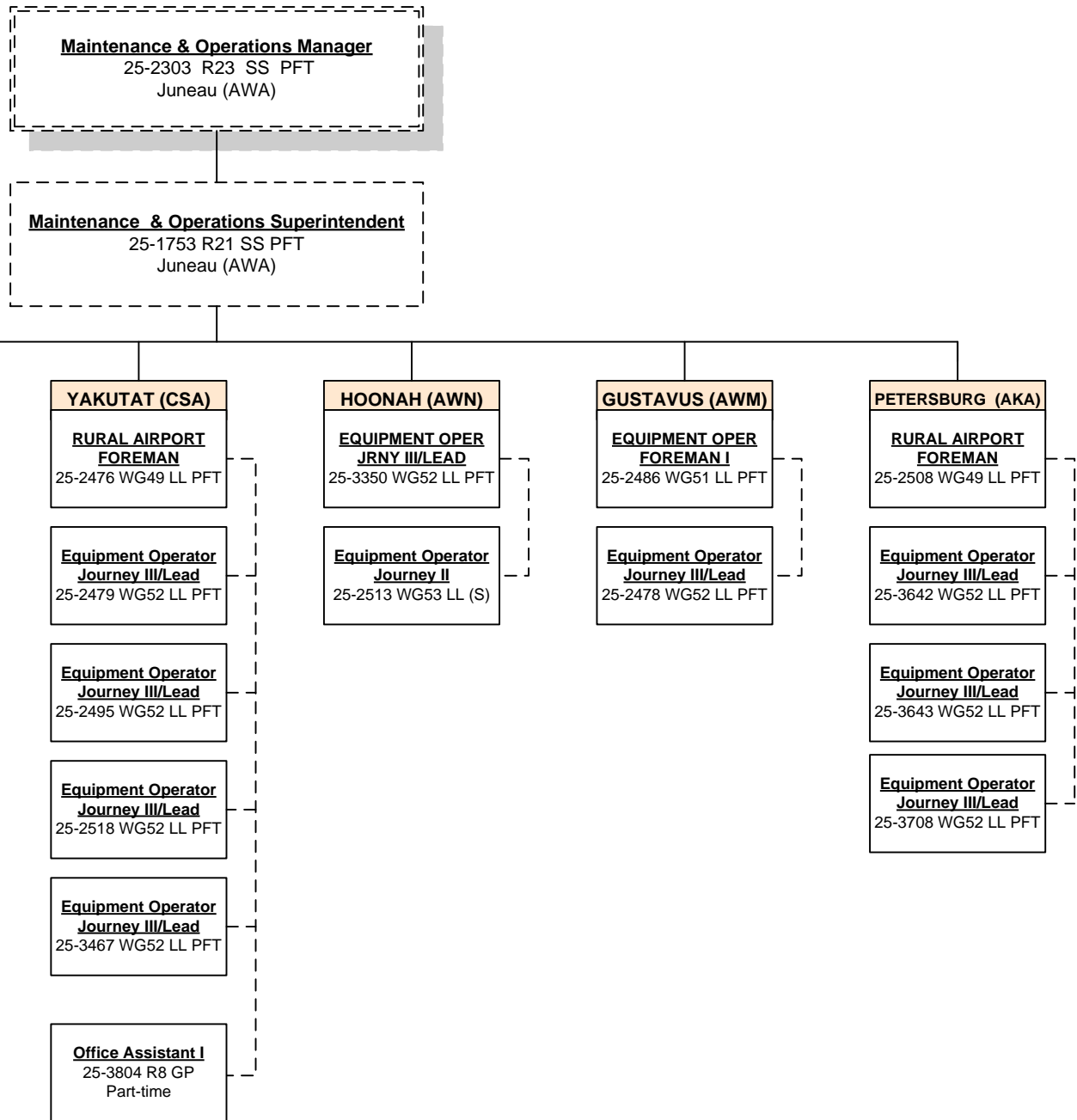
**Maintenance & Operations Manager**  
 25-2303 R23 SS PFT  
 Juneau (AWA)

**Maintenance & Operations Superintendent**  
 25-1753 R21 SS PFT  
 Juneau (AWA)



Department of Transportation and Public Facilities  
 RDU: Highways, Aviation and Facilities  
 Southcoast Region Highways and Aviation (603)  
 FY2017 Governor's Budget

24 Full-time  
 1 Seasonal  
 1 Part-time  
 Non-Permanent  
 26 Page Total



Department of Transportation and Public Facilities  
 RDU: Highways, Aviation and Facilities  
 Southcoast Region Highways and Aviation (603)  
 FY2017 Governor's Budget

36 Full-time  
 Seasonal  
 Part-time  
 2 Non-Permanent  
 38 Page Total

