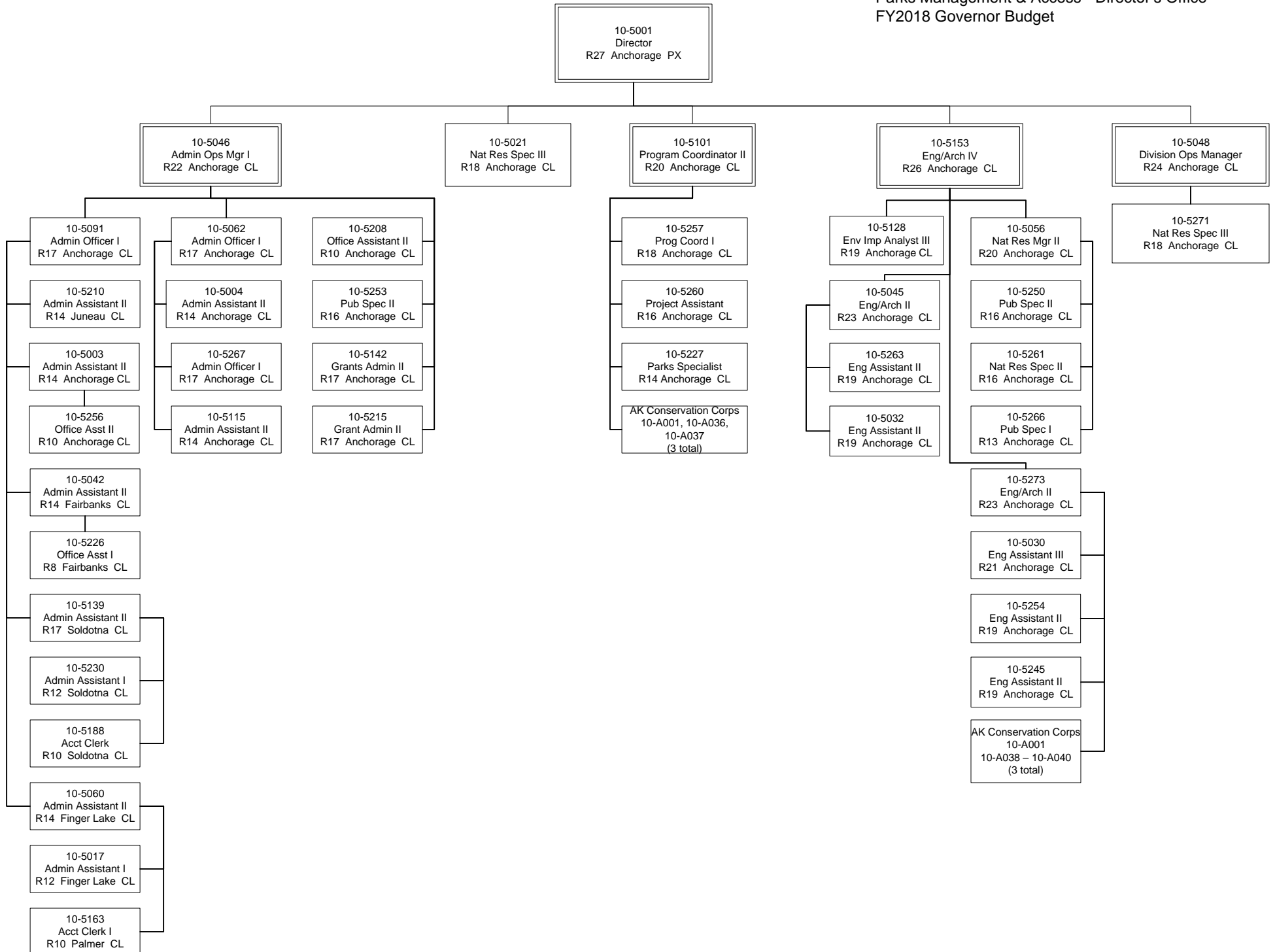


Department of Natural Resources
Parks Management & Access - Director's Office
FY2018 Governor Budget



Department of Natural Resources
 Parks Management & Access – Field Operations
 FY2018 Governor Budget

10-5001
 Director
 R27 Anchorage PX

10-5048
 Division Operations Manager
 24 Anchorage CL

CHUGACH/SOUTHWEST
 REGION

KENAI

MAT-SU

NORTHERN

SOUTHEAST

KODIAK

10-5006
 Park Superintendent
 R20 Anchorage CL

10-5044
 Park Superintendent
 R20 Soldotna CL

10-5025
 Park Superintendent
 R20 Palmer CL

10-5085
 Park Superintendent
 R20 Fairbanks CL

10-5058
 Park Superintendent
 R20 Juneau CL

10-5218
 Park Ranger II
 R18 Kodiak CL

10-5019
 Maint Gen Journey
 R54 Eagle River CL

10-5111
 Park Ranger II
 R18 Soldotna CL

10-5095
 Maint Gen Journey
 R54 Soldotna CL

10-5082
 Maint Gen Journey
 R54 Willow CL

10-5079
 Park Ranger II
 R18 Finger Lake CL

10-5028
 Maint Gen Journey
 R54 Fairbanks CL

10-5179
 Maint Gen Journey
 R54 Juneau CL

10-5185
 Park Ranger I
 R16 Kodiak CL

10-5084
 Maint Gen Sub-Journey II
 R56 Eagle River CL

10-5231
 Park Ranger I
 R16 Soldotna CL

10-5265
 Maint Gen Sub-Journey II
 R56 Soldotna CL

10-5087
 Maint Gen Sub-Journey II
 R56 Willow CL

10-5214
 Park Specialist
 R14 Finger Lake CL

10-5217
 Park Ranger II
 R18 Fairbanks CL

10-5259
 Park Ranger II
 R18 Juneau CL

10-5224
 Nat Res Tech II
 R12 Kodiak CL

10-5268
 Park Specialist
 R14 Eagle River CL

10-5225
 Park Ranger I
 R16 Soldotna CL

10-5222
 Park Ranger II
 R18 Homer CL

10-0262
 Maint Gen Sub-Journey II
 R56 Denali CL

10-5090
 Park Ranger I
 R16 Finger Lake CL

10-5278
 Park Ranger I
 R16 Fairbanks CL

10-5246
 Nat Res Tech II
 R12 Juneau CL

10-5094
 Nat Res Tech II
 R12 Kodiak CL

10-5031
 Nat Res Tech II
 R12 Anchorage CL

10-5279
 Park Ranger I
 R16 Soldotna CL

10-5177
 Park Ranger I
 R16 Homer CL

10-5144
 Park Ranger II
 R18 Willow CL

10-5182
 Park Specialist
 R14 Finger Lake CL

10-5059
 Park Ranger I
 R16 Chena River CL

10-5166
 Nat Res Tech II
 R12 Haines CL

AK Conservation Corps
 10-A002 – 10-A004
 (3 total)

10-5183
 Park Ranger II
 R18 Anchorage CL

10-5232
 Nat Res Tech II
 R12 Soldotna CL

10-5107
 Park Specialist
 R14 Homer CL

10-5122
 Park Ranger I
 R16 Nancy Lake CL

10-5040
 Park Specialist
 R14 Chena River CL

10-5272
 Nat Res Tech I
 R10 Haines CL

10-5184
 Park Ranger I
 R16 Eagle River CL

10-5119
 Park Ranger II
 R18 Seward CL

10-5162
 Park Ranger I
 R16 Soldotna CL

10-5248
 Park Specialist
 R14 Willow CL

10-5172
 Nat Res Tech II
 R12 Delta Junction CL

AK Conservation Corps
 10-A034 – 10-A035
 (2 total)

10-5110
 Park Ranger I
 R16 Haines CL

10-5014
 Park Ranger I
 R16 Anchorage CL

10-5211
 Park Specialist
 R14 Seward CL

10-5174
 Nat Res Tech II
 R12 Ninilchik CL

10-5219
 Park Ranger I
 R16 Denali CL

10-5040
 Park Specialist
 R14 Chena River CL

10-5277
 Park Specialist
 R14 Juneau CL

10-5092
 Park Ranger I
 R16 Anchorage CL

10-5160
 Nat Res Spec III
 R18 Soldotna CL

AK Conservation Corps
 10-A041 – 10-A044
 10-A020 – 10-A026
 (11 total)

10-5026
 Nat Res Tech II
 R12 Denali CL

10-5172
 Nat Res Tech II
 R12 Delta Junction CL

10-5189
 Nat Res Specialist II
 R16 Ketchikan CL

10-5043
 Park Ranger I
 R16 Dillingham CL

AK Conservation Corps
 10-A041 – 10-A044
 10-A020 – 10-A026
 (11 total)

AK Conservation Corps
 10-A045 – 10-A048
 (4 total)

10-5080
 Park Specialist
 R14 Denali CL

10-5172
 Nat Res Tech II
 R12 Delta Junction CL

10-5022
 Nat Res Tech II
 R12 Ketchikan CL

AK Conservation Corps
 10-A045 – 10-A048
 (4 total)

AK Conservation Corps
 10-A041 – 10-A044
 10-A020 – 10-A026
 (11 total)

AK Conservation Corps
 10-A045 – 10-A048
 (4 total)

10-5276
 Nat Res Tech II
 R12 Trapper Creek CL

AK Conservation Corps
 10-A034 – 10-A035
 (2 total)

AK Conservation Corps
 10-A005 – 10-A008
 (4 total)

AK Conservation Corps-
 10-A009 – 10-A019
 (11 total)