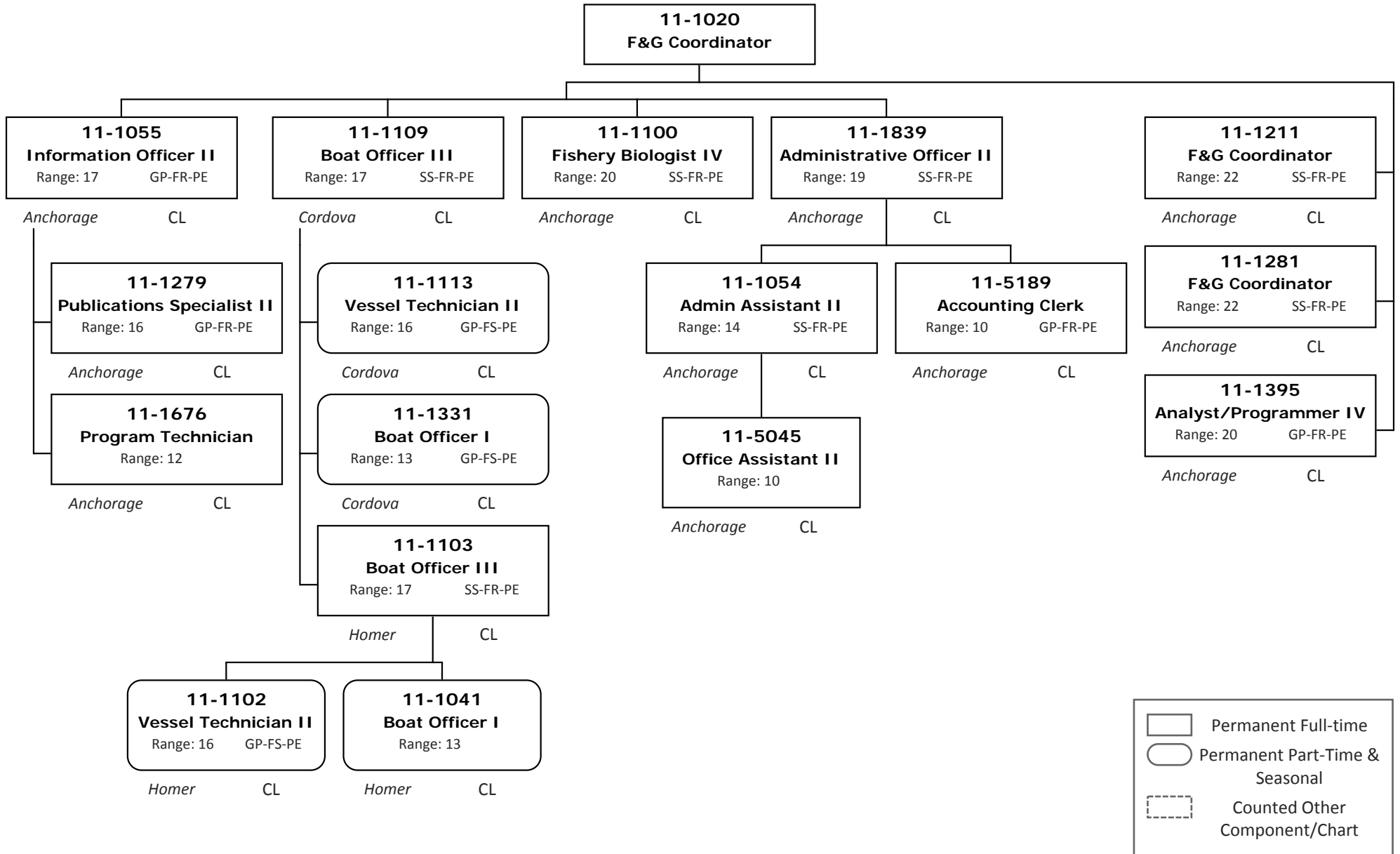
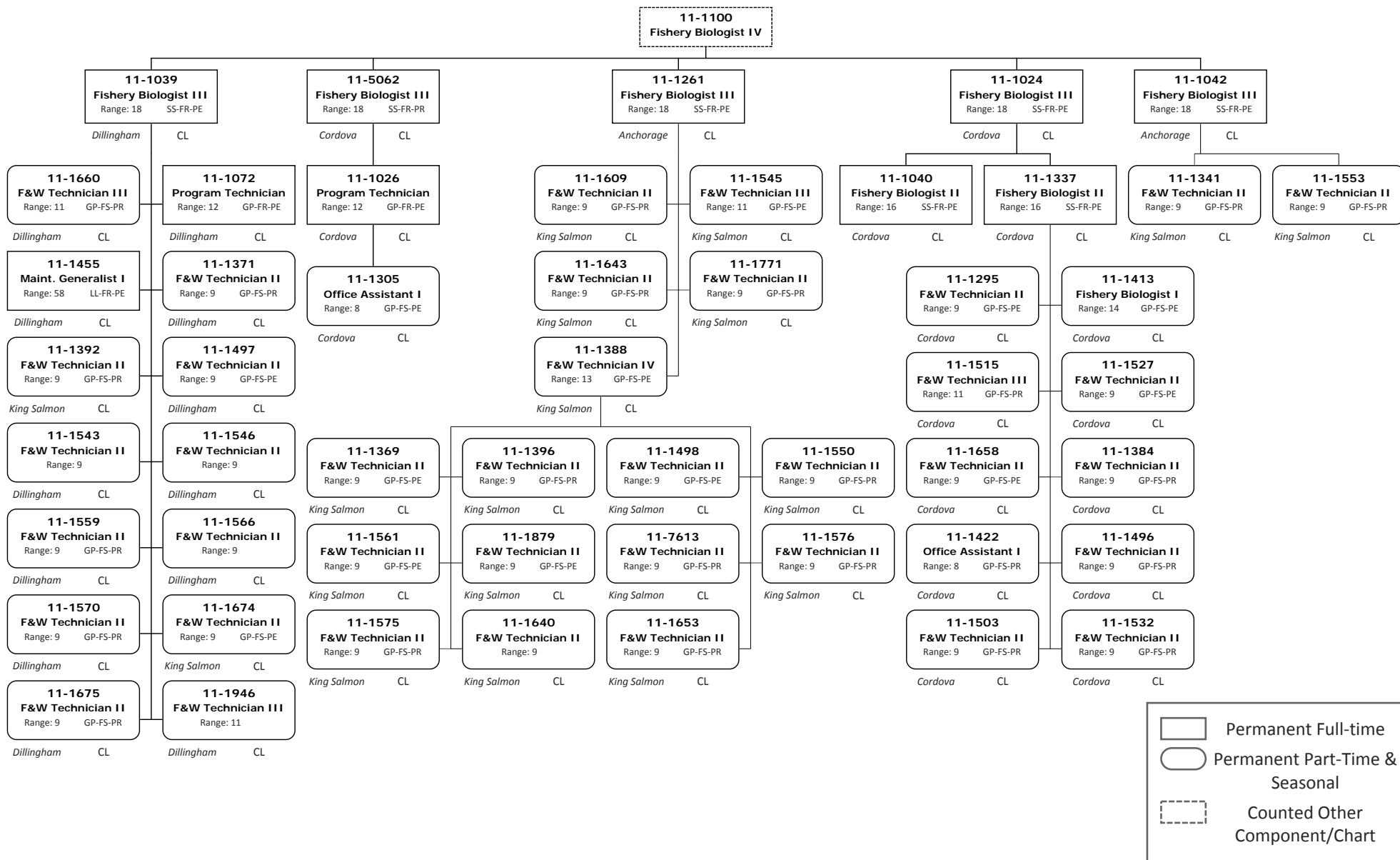


Division of Commercial Fisheries  
 2168 - Central Region Fisheries Management Component  
 FY2018 Governor's Budget



Division of Commercial Fisheries  
2168 - Central Region Fish Management  
FY2018 Governor's Budget

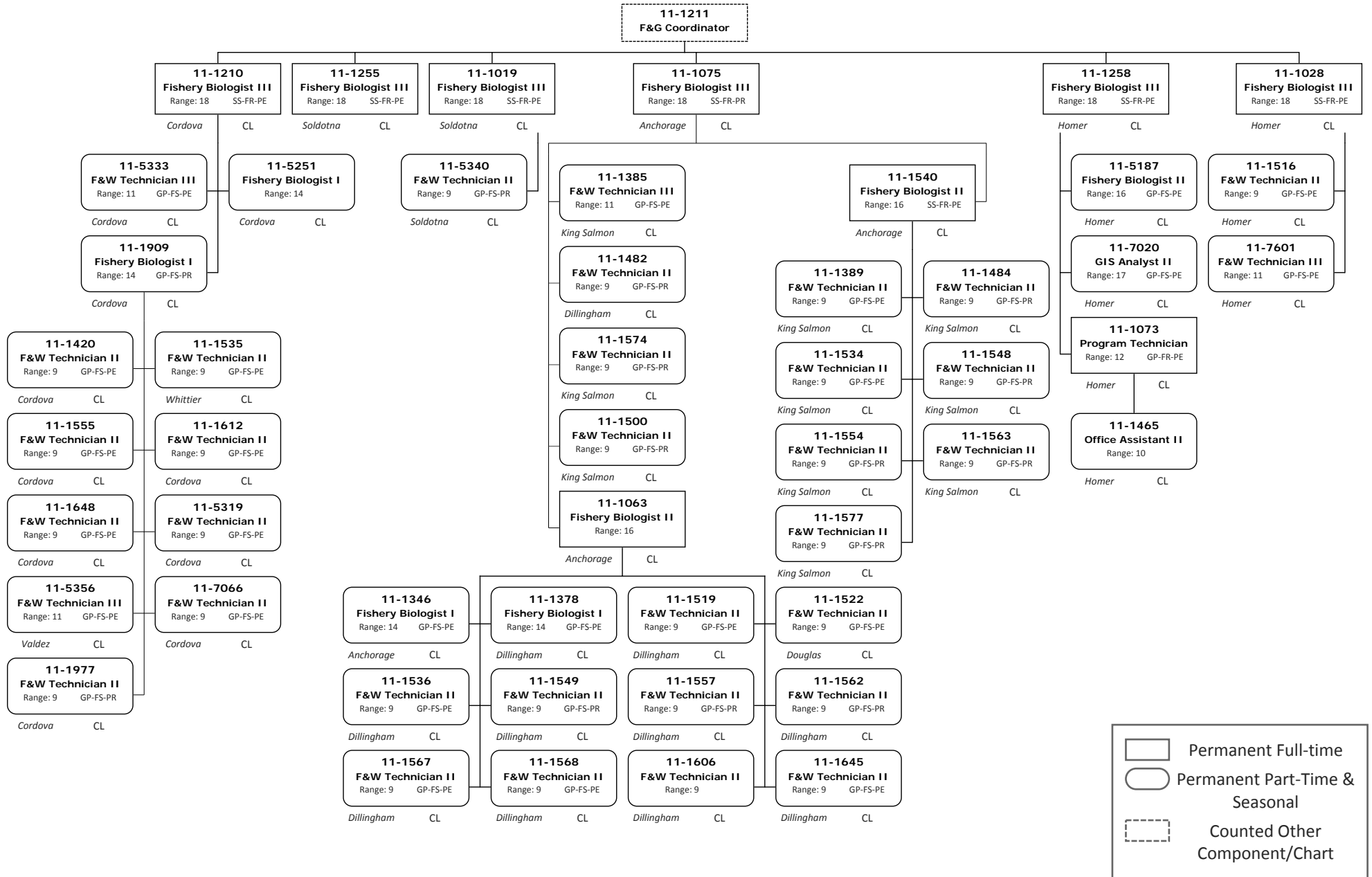


Permanent Full-time  
 Permanent Part-Time & Seasonal  
 Counted Other Component/Chart

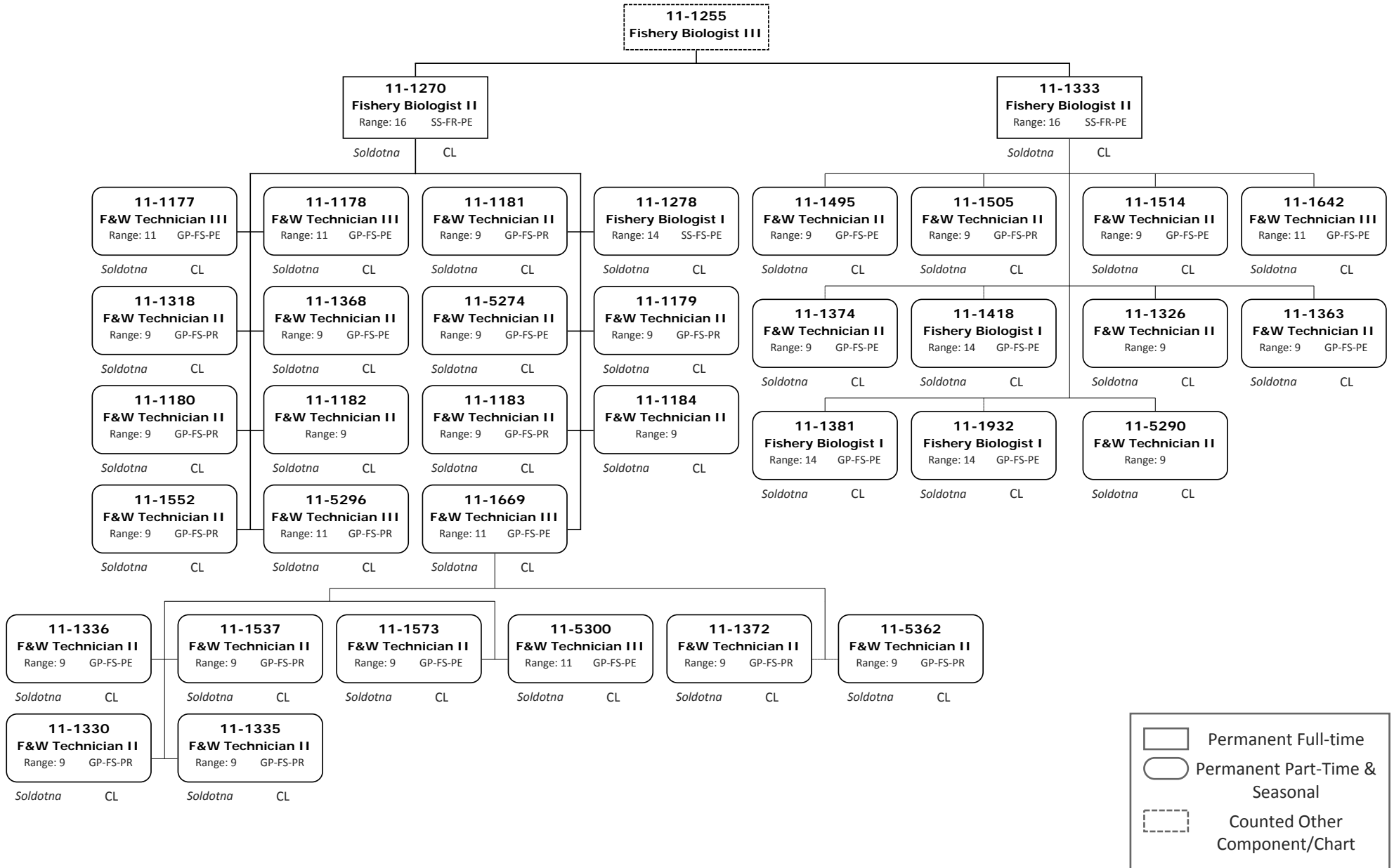
# Division of Commercial Fisheries

## 2168 - Central Region Fisheries Management Component

### FY2018 Governor's Budget



Division of Commercial Fisheries  
 2168 - Central Region Fisheries Management Component  
 FY2018 Governor's Budget



Division of Commercial Fisheries  
 2168 - Central Region Fisheries Management Component  
 FY2018 Governor's Budget

