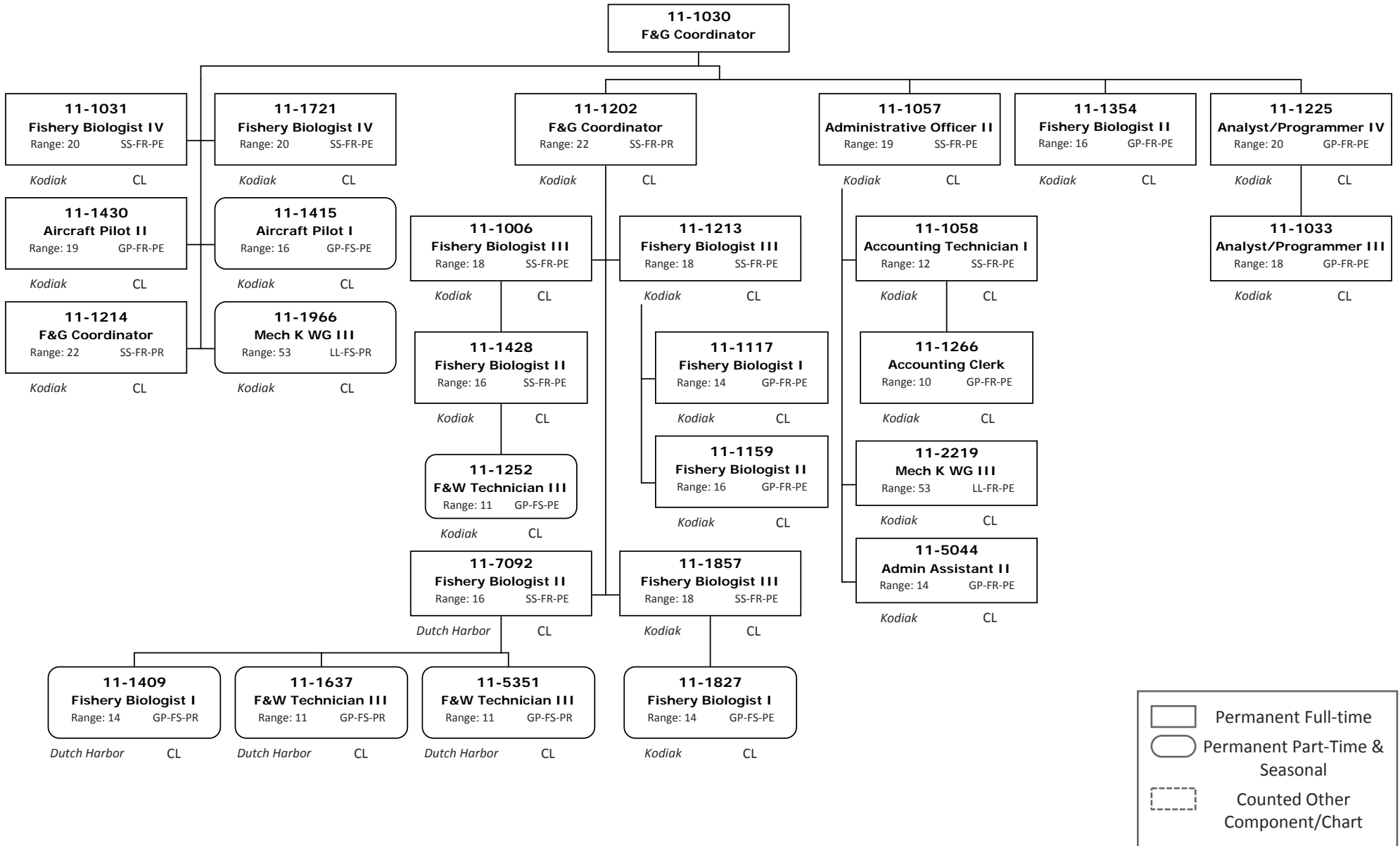
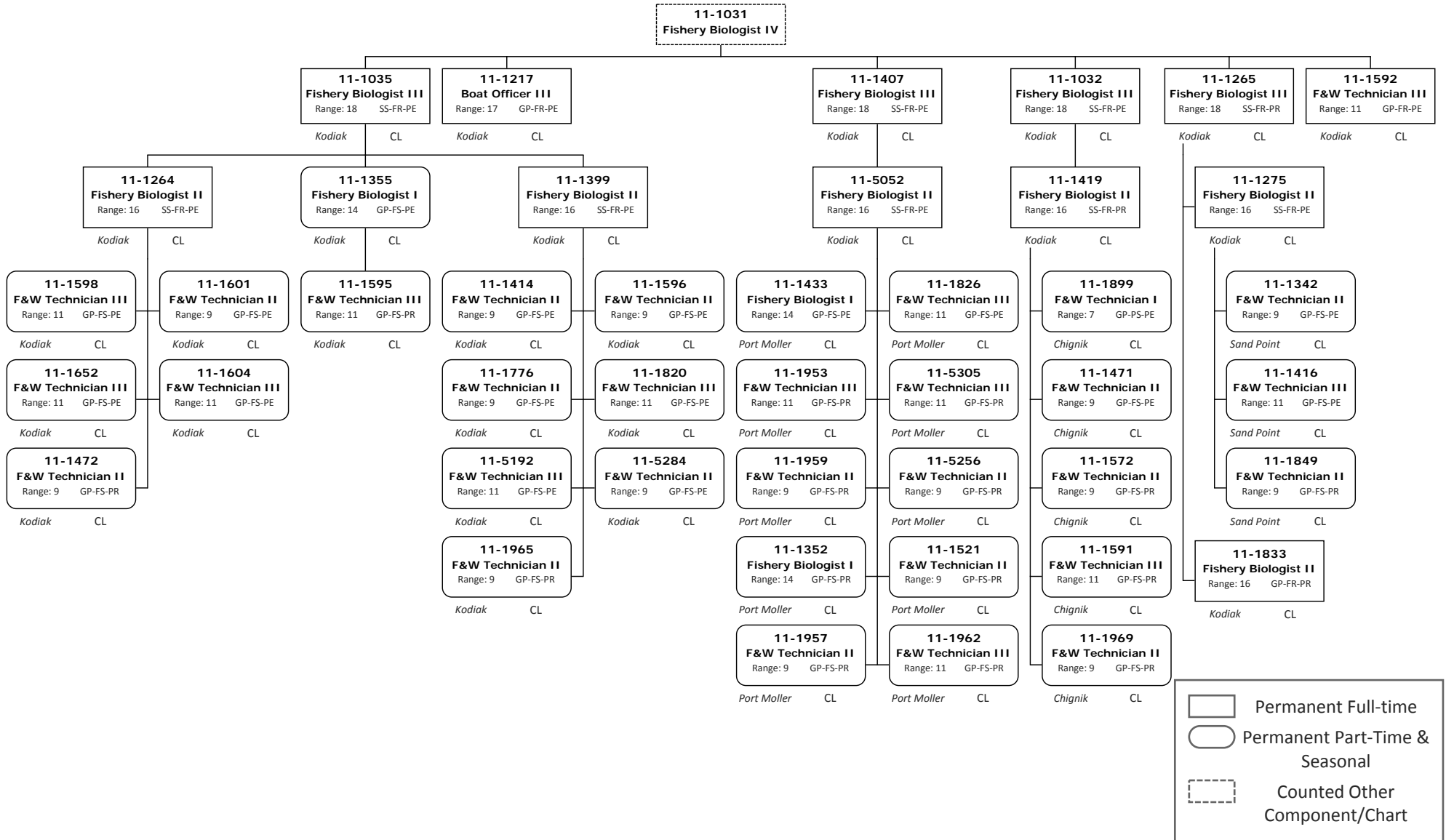


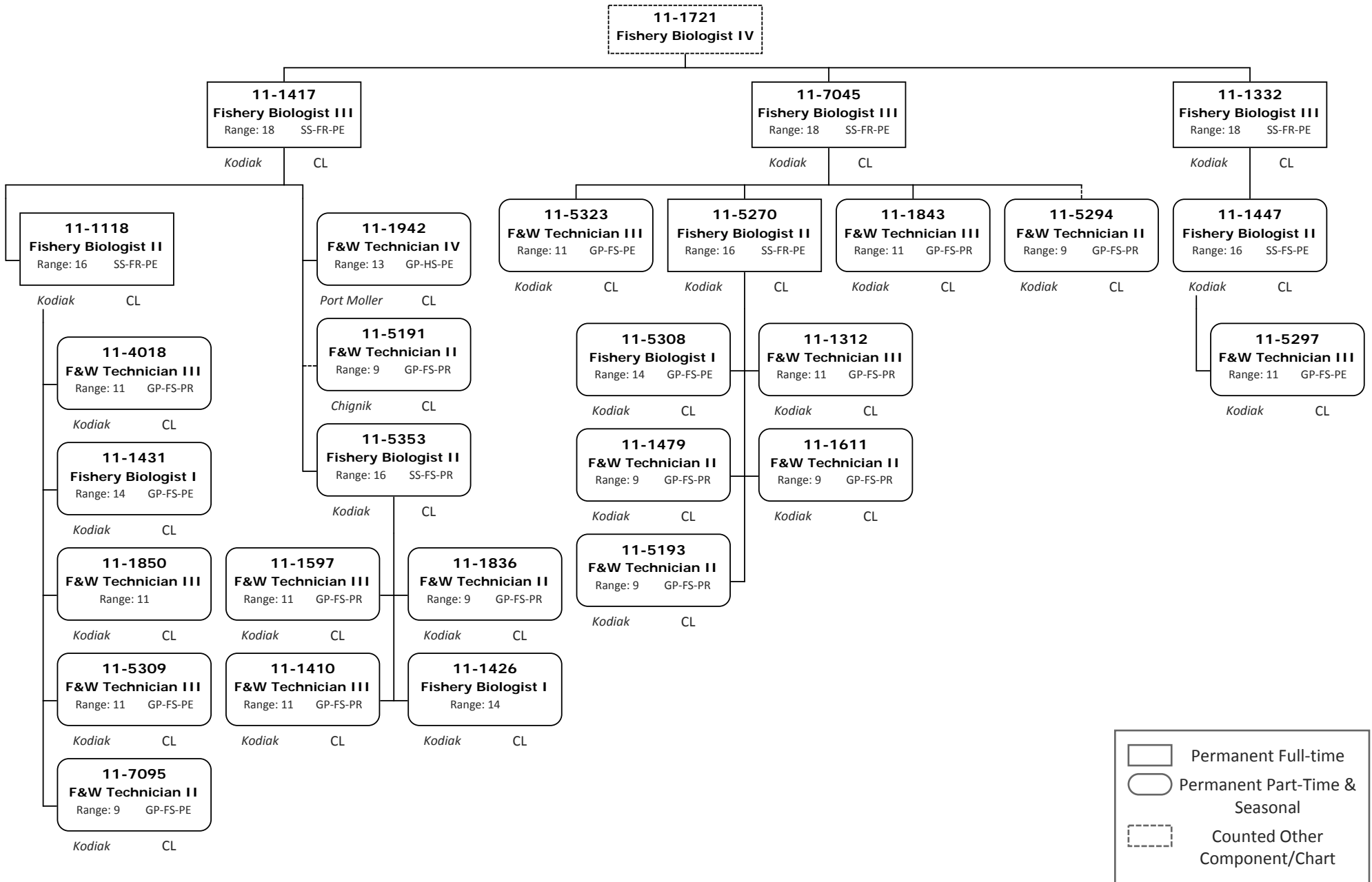
Division of Commercial Fisheries
 2170 - Westward Region Fisheries Management Component
 FY2018 Governor's Budget



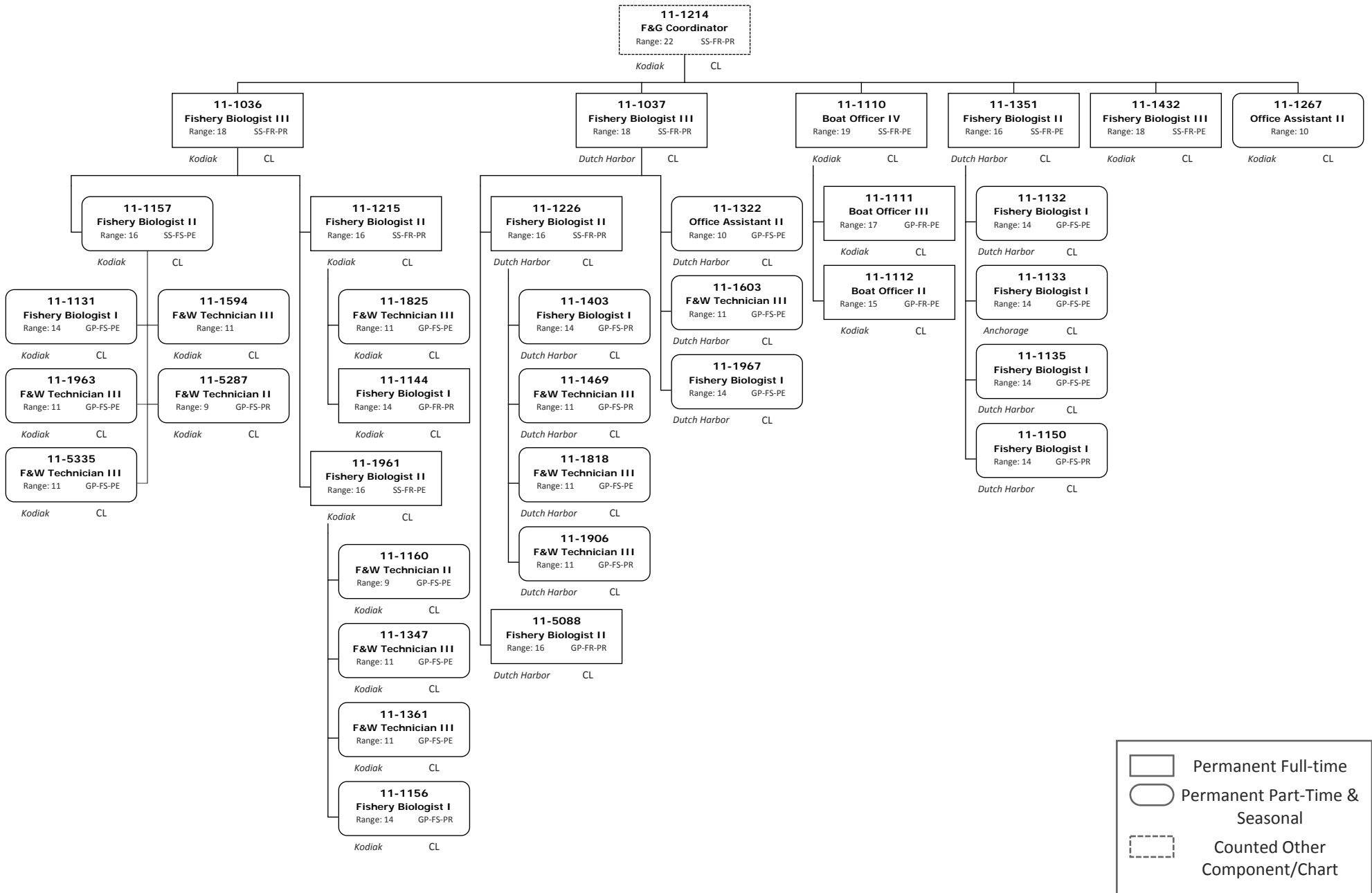
Division of Commercial Fisheries
 2170 - Westward Region Fisheries Management Component
 FY2018 Governor's Budget






Division of Commercial Fisheries
 2170 - Westward Region Fisheries Management Component
 FY2018 Governor's Budget



Division of Commercial Fisheries
 2170 - Westward Region Fisheries Management Component
 FY2018 Governor's Budget



	Permanent Full-time
	Permanent Part-Time & Seasonal
	Counted Other Component/Chart