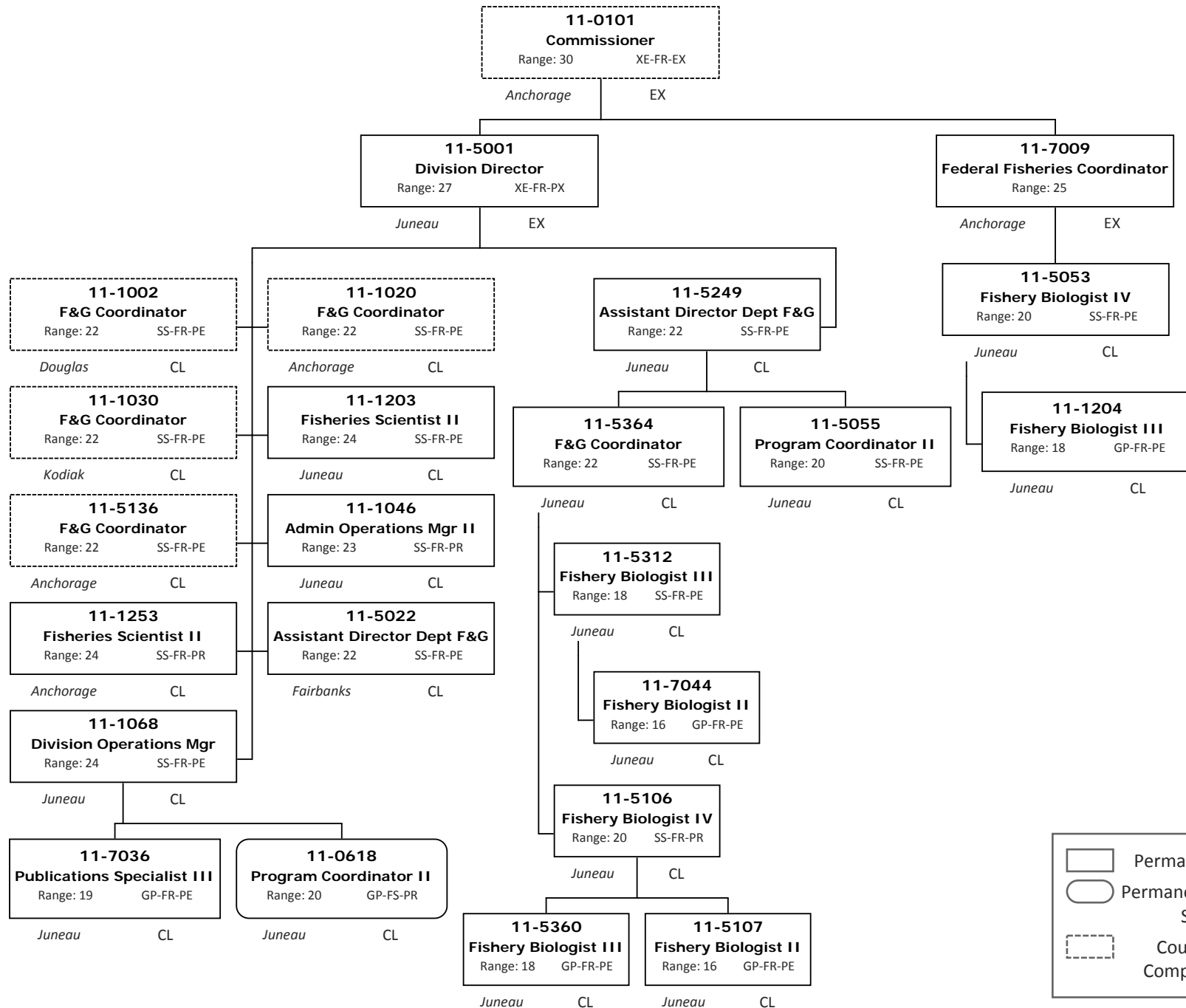


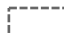
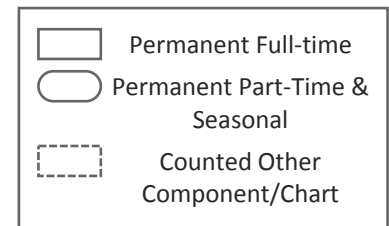
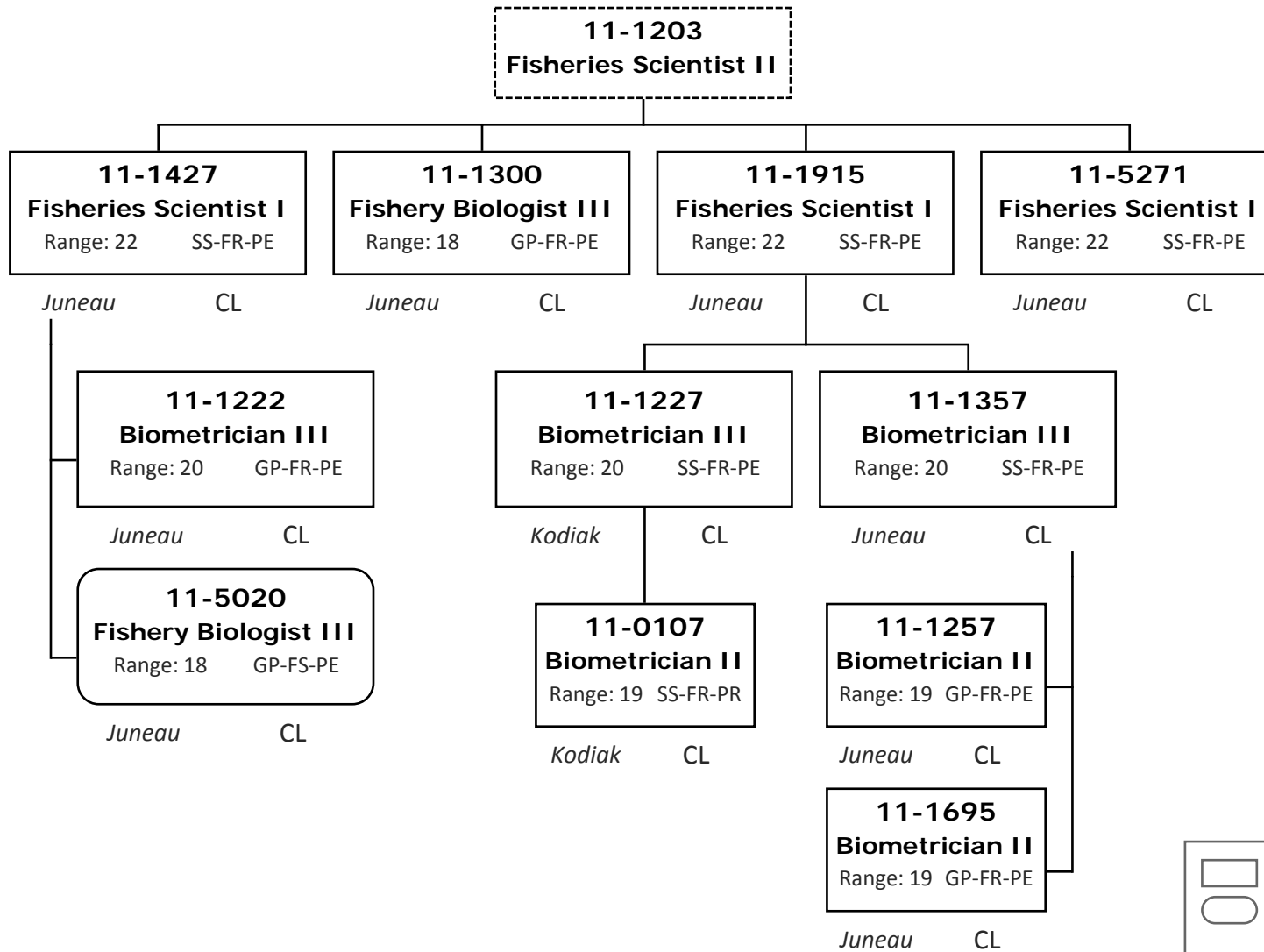


Division of Commercial Fisheries  
 2171 - Statewide Region Fisheries Management Component  
 FY2018 Governor's Budget

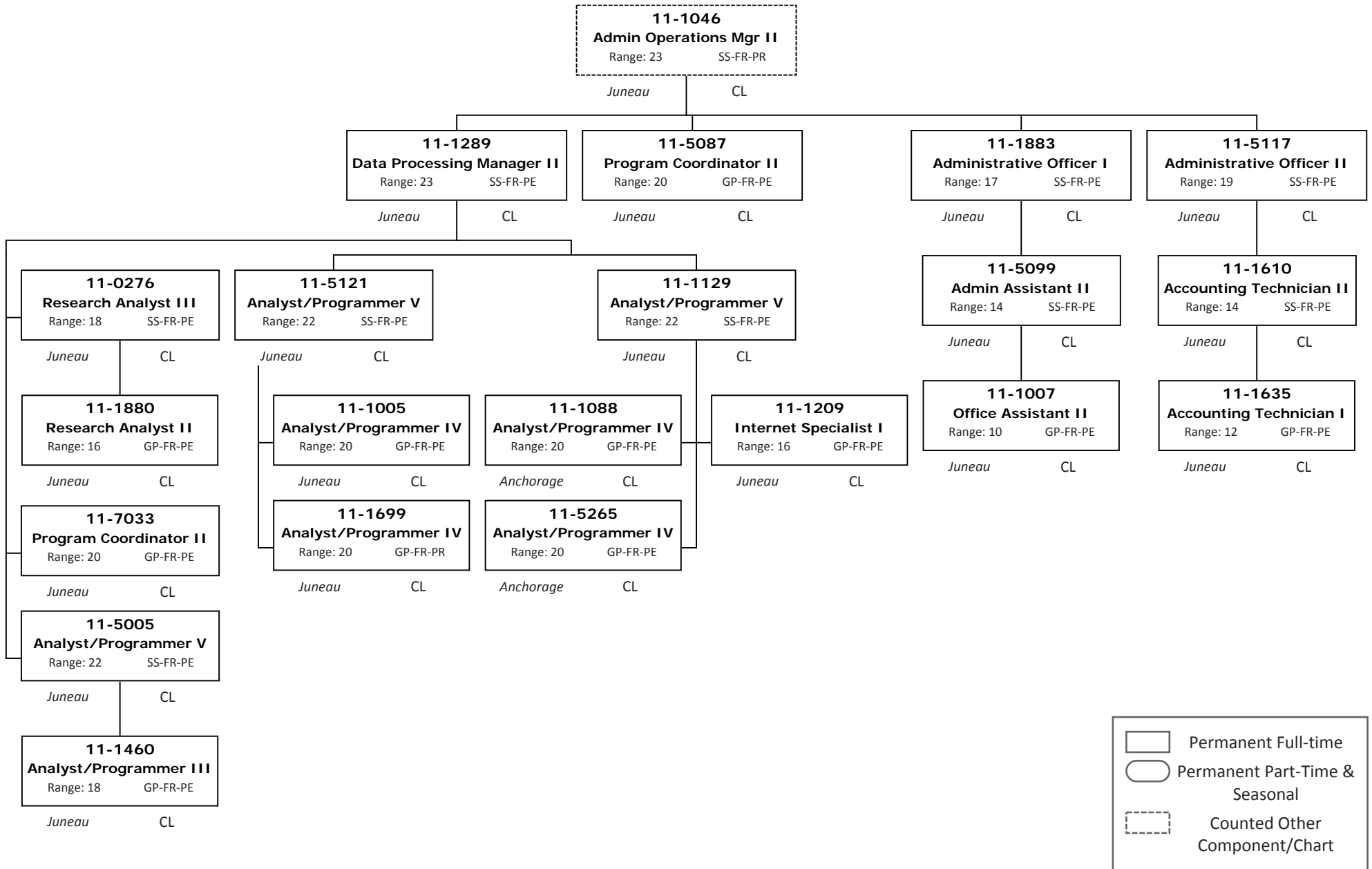




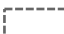
	Permanent Full-time
	Permanent Part-Time & Seasonal
	Counted Other Component/Chart

Division of Commercial Fisheries  
 2171 - Statewide Region Fisheries Management Component  
 FY2018 Governor's Budget

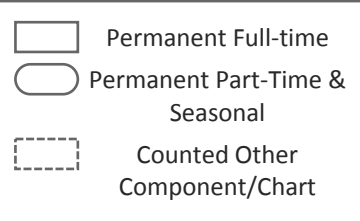
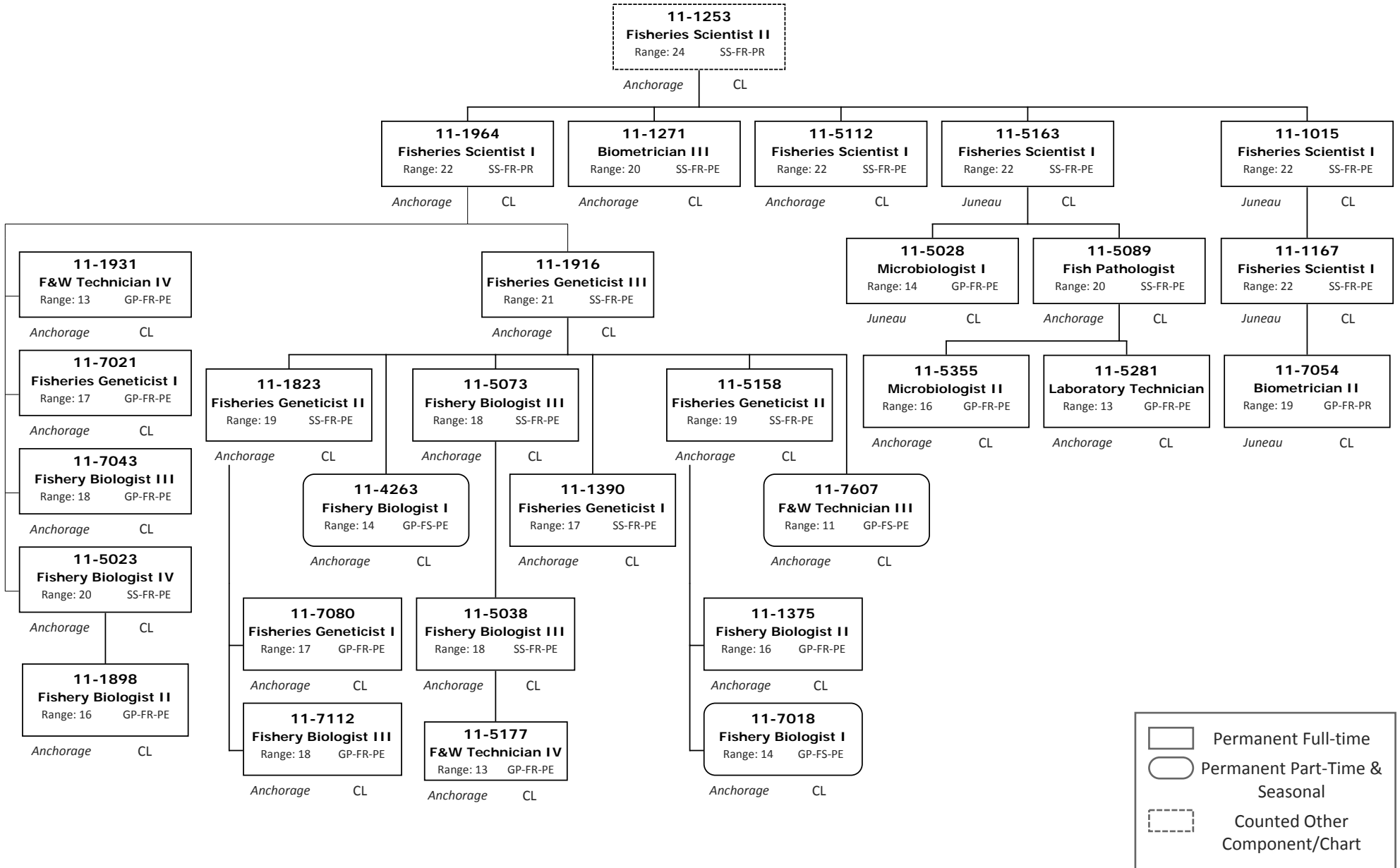


Division of Commercial Fisheries  
 2171 - Statewide Region Fisheries Management Component  
 FY2018 Governor's Budget



	Permanent Full-time
	Permanent Part-Time & Seasonal
	Counted Other Component/Chart

Division of Commercial Fisheries  
 2171 - Statewide Region Fisheries Management Component  
 FY2018 Governor's Budget



Division of Commercial Fisheries  
 2171 - Statewide Region Fisheries Management Component  
 FY2018 Governor's Budget

