

Health and Social Services
Office of Children's Services
Front Line Social Worker (2305)
Anchorage Regional Office
FY2018 Governor's

Protective Services
Manager II
06-4506
R22 CL
Anchorage

ET UNIT

Protective Services
Manager I
06-4633
R21 CL
Anchorage

Social Services
Program
Coordinator
06-3075
R20 CL
Juneau

Protective Services
Specialist IV
06-3928
R20 CL
Anchorage

Protective Services
Specialist IV
06-4504
R20 CL
Anchorage

Protective Services
Specialist IV
06-3711
R20 CL
Anchorage

Protective Services
Specialist IV
06-3018
R20 CL
Anchorage

Protective Services
Specialist IV
06-3125
R20 CL
Anchorage

Nurse IV
(Psychiatric)
06-4603
R22 CL
Anchorage

Mental Health
Clinician III
06-4642
R21 CL
Anchorage

Office Assistant II
06-4607
R10 CL
Anchorage

Office Assistant II
06-3082
R10 CL
Anchorage

Eligibility
Technician IV
06-8104
R17 CL
Anchorage

Eligibility
Technician II
06-4645
R14 CL
Anchorage

Eligibility
Technician II
06-8149
R14 CL
Anchorage

Eligibility
Technician II
06-3026
R14 CL
Anchorage

Eligibility
Technician II
06-3187
R14 CL
Anchorage

Eligibility
Technician II
06-9339
R14 CL
Anchorage

Protective Services
Specialist II
06-3922
R17 CL
Anchorage

Office Assistant II
06-3390
R10 CL
Anchorage

Protective Services
Specialist II
06-3043
R17 CL
Anchorage

Protective Services
Specialist II
06-4632
R17 CL
Anchorage

Protective Services
Specialist II
06-9270
R17 CL
Anchorage

Protective Services
Specialist II
06-9195
R17 CL
Anchorage

Protective Services
Specialist II
06-4627
R17 CL
Anchorage

Protective Services
Specialist II
06-4543
R17 CL
Anchorage

Protective Services
Specialist II
06-3122
R17 CL
Anchorage

Protective Services
Specialist I
06-3432
R15 CL
Anchorage

Protective Services
Specialist II
06-3872
R17 CL
Anchorage

Protective Services
Specialist II
06-3042
R17 CL
Anchorage

Protective Services
Specialist II
06-3425
R17 CL
Anchorage

Protective Services
Specialist II
06-9272
R17 CL
Anchorage

Protective Services
Specialist II
06-9335
R17 CL
Anchorage

Protective Services
Specialist II
06-4629
R17 CL
Anchorage

Protective Services
Specialist II
06-3931
R17 CL
Anchorage

Protective Services
Specialist II
06-3100
R17 CL
Anchorage

Protective Services
Specialist II
06-3076
R17 CL
Anchorage

Protective Services
Specialist II
06-3929
R17 CL
Anchorage

Protective Services
Specialist I
06-3431
R15 CL
Anchorage

Protective Services
Specialist II
06-9279
R17 CL
Anchorage

Protective Services
Specialist II
06-9282
R17 CL
Anchorage

IND LIV

AROWRO

Social Services
Program
Coordinator
06-1350
R20 CL
Juneau

Protective Services
Specialist IV
06-3072
R20 CL
Bethel

Protective Services
Specialist IV
06-3060
R20 CL
Bethel

Protective Services
Specialist II
06-9143
R17 CL
Anchorage

Protective Services
Specialist II
06-9302
R17 CL
Anchorage

Protective Services
Specialist II
06-9326
R17 CL
Anchorage

Protective Services
Specialist II
06-9325
R17 CL
Anchorage

Protective Services
Specialist II
06-9327
R17 CL
Anchorage

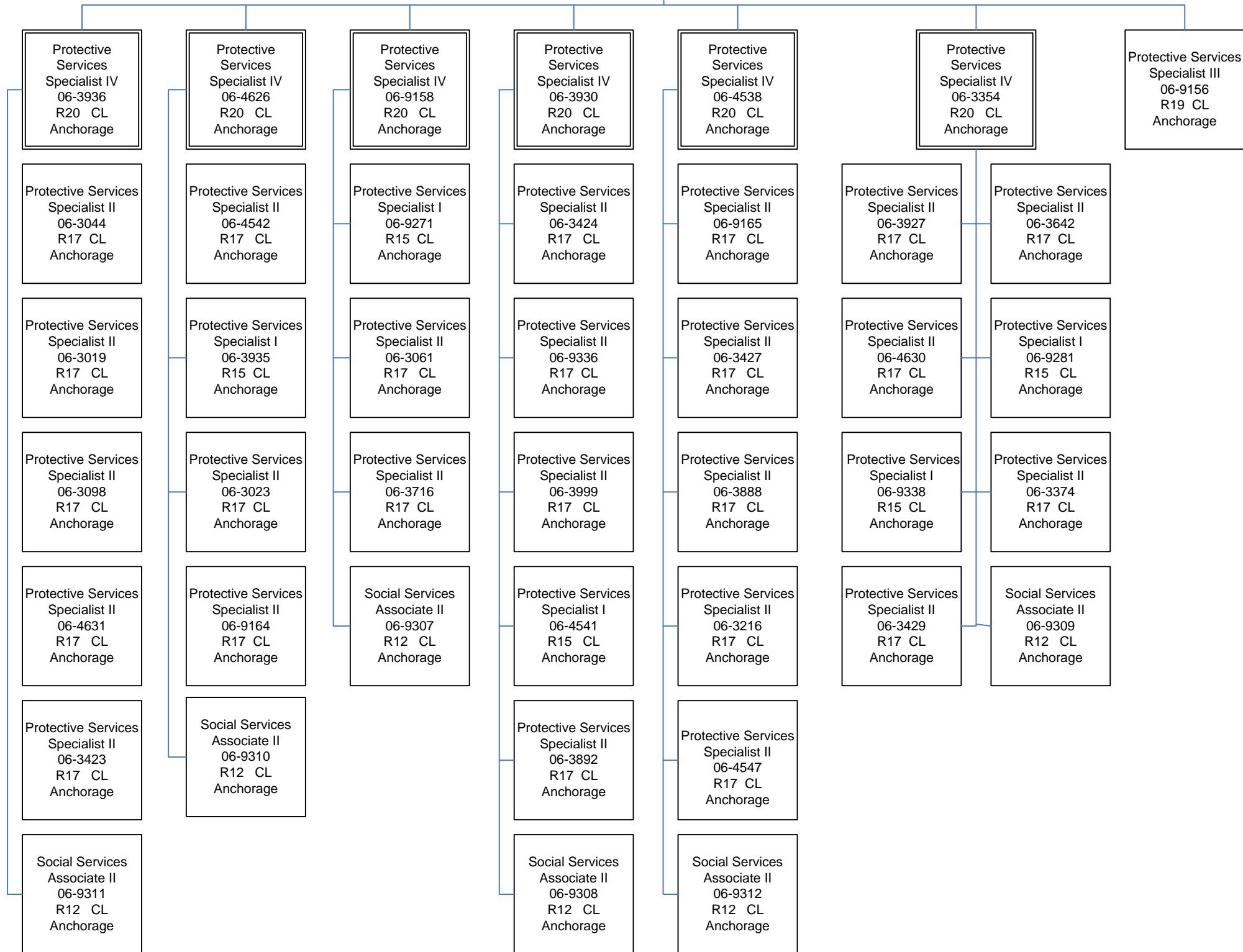
Protective Services
Specialist II
06-9324
R17 CL
Anchorage

Count: 46 FT

Health and Social Services
Office of Children's Services
Front Line Social Worker (2305)
Anchorage Regional Office
FY2018 Governor's

Protective Services
Manager II
06-4506
R22 CL
Anchorage

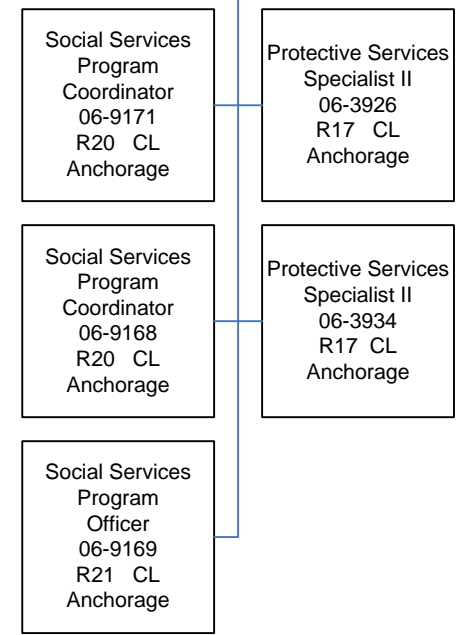
Protective Services
Manager I
06-3085
R21 CL
Anchorage



ORCA UNIT

Data Processing
Manager I
06-9304
R22 CL
Anchorage

Data Processing
Manager I
06-9167
R22 CL
Anchorage



Count: 49 FT

Health and Social Services
 Office of Children's Services
 Front Line Social Worker (2305)
 Anchorage Regional Office
 FY2018 Governor's

Protective Services
 Manager II
 06-4506
 R22 CL
 Anchorage

Protective Services
 Manager I
 06-3878
 R21 CL
 Anchorage

ASPIN UNIT

Social Services
 Program
 Coordinator
 06-4636
 R20 CL
 Juneau

Project Assistant
 06-4624
 R16 CL
 Anchorage

Social Services
 Associate II
 06-4623
 R12 CL
 Anchorage

Social Services
 Associate II
 06-4621
 R12 CL
 Anchorage

Social Services
 Associate II
 06-4671
 R12 CL
 Anchorage

Administrative
 Assistant II
 06-3747
 R14 CL
 Anchorage

Protective
 Services
 Specialist IV
 06-3430
 R20 CL
 Anchorage

Protective
 Services
 Specialist IV
 06-3891
 R20 CL
 Anchorage

Protective
 Services
 Specialist IV
 06-4544
 R20 CL
 Anchorage

Protective Services
 Specialist III
 06-9133
 R19 CL
 Anchorage

Social Services
 Associate II
 06-3938
 R12 CL
 Anchorage

Social Services
 Associate II
 06-3941
 R12 CL
 Anchorage

Protective Services
 Specialist II
 06-4628
 R17 CL
 Anchorage

Protective Services
 Specialist II
 06-3932
 R17 CL
 Anchorage

Protective Services
 Specialist II
 06-9194
 R17 CL
 Anchorage

Protective Services
 Specialist II
 06-9153
 R17 CL
 Anchorage

Protective Services
 Specialist II
 06-3409
 R17 CL
 Anchorage

Protective Services
 Specialist I
 06-3057
 R15 CL
 Anchorage

Protective Services
 Specialist III
 06-9134
 R19 CL
 Anchorage

Social Services
 Associate II
 06-3939
 R12 CL
 Anchorage

Social Services
 Associate II
 06-9163
 R12 CL
 Anchorage

Protective Services
 Specialist II
 06-9155
 R17 CL
 Anchorage

Protective Services
 Specialist II
 06-9196
 R17 CL
 Anchorage

Protective Services
 Specialist I
 06-3869
 R15 CL
 Anchorage

Protective Services
 Specialist I
 06-3870
 R15 CL
 Anchorage

Protective Services
 Specialist I
 06-3764
 R15 CL
 Anchorage

Protective Services
 Specialist II
 06-3712
 R17 CL
 Anchorage

Protective Services
 Specialist III
 06-9135
 R19 CL
 Anchorage

Social Services
 Associate II
 06-3943
 R12 CL
 Anchorage

Social Services
 Associate II
 06-3942
 R12 CL
 Anchorage

Protective Services
 Specialist II
 06-9280
 R17 CL
 Anchorage

Protective Services
 Specialist I
 06-3428
 R15 CL
 Anchorage

Protective Services
 Specialist I
 06-9154
 R15 CL
 Anchorage

Protective Services
 Specialist II
 06-9315
 R17 CL
 Anchorage

Protective Services
 Specialist II
 06-9267
 R17 CL
 Anchorage

Protective Services
 Specialist II
 06-3417
 R17 CL
 Anchorage

Protective Services
 Specialist III
 06-9136
 R19 CL
 Anchorage

Social Services
 Associate II
 06-3748
 R12 CL
 Anchorage

Social Services
 Associate II
 06-4546
 R12 CL
 Anchorage

Protective Services
 Specialist II
 06-3022
 R17 CL
 Anchorage

Protective Services
 Specialist II
 06-3890
 R17 CL
 Anchorage

Protective Services
 Specialist II
 06-3933
 R17 CL
 Anchorage

Office Assistant II
 06-9131
 R10 CL
 Anchorage

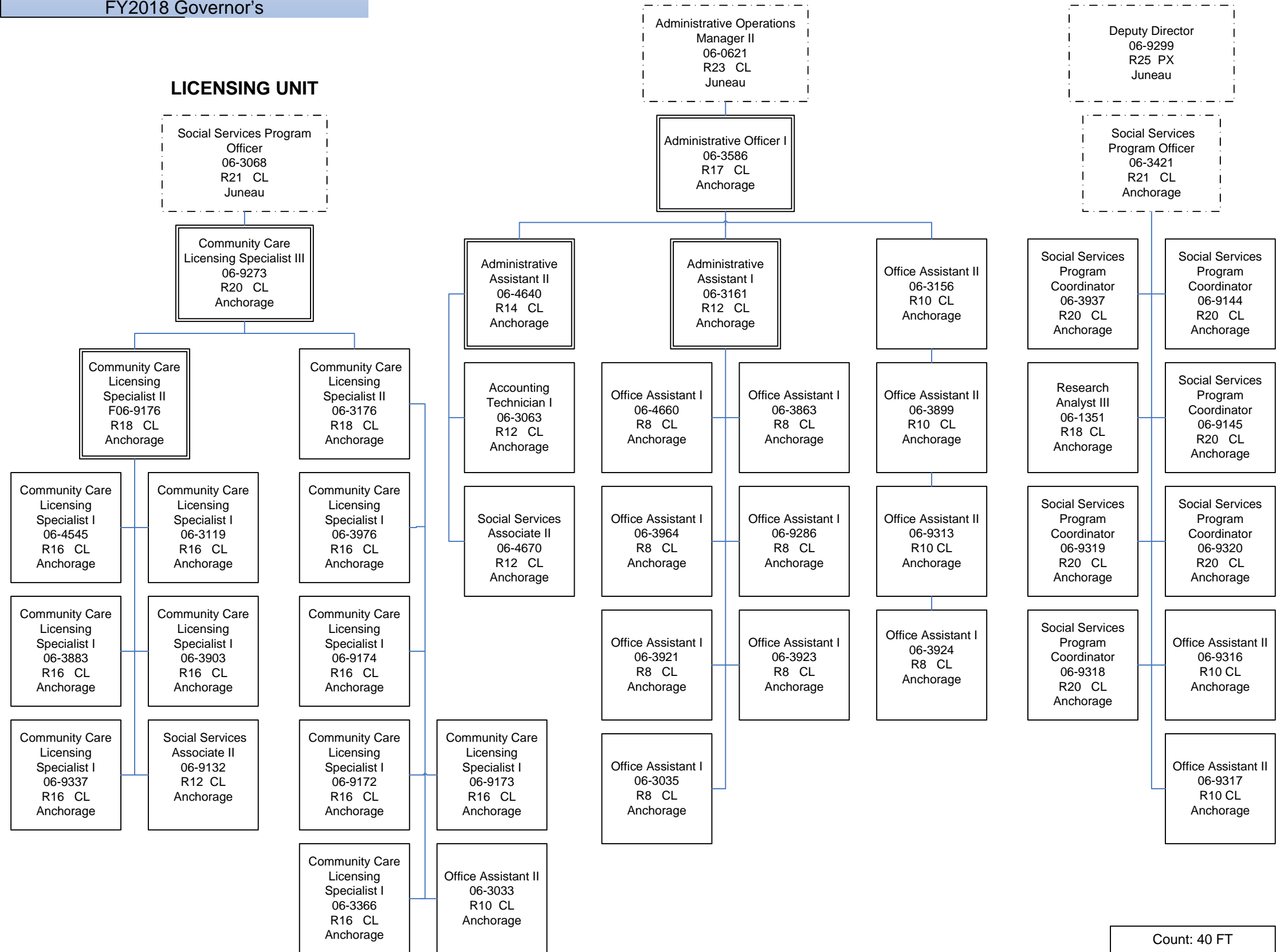
Social Services
 Associate II
 06-4622
 R12 CL
 Anchorage

Health and Social Services
Office of Children's Services
Front Line Social Worker (2305)
Anchorage Regional Office
FY2018 Governor's

ADMIN UNIT

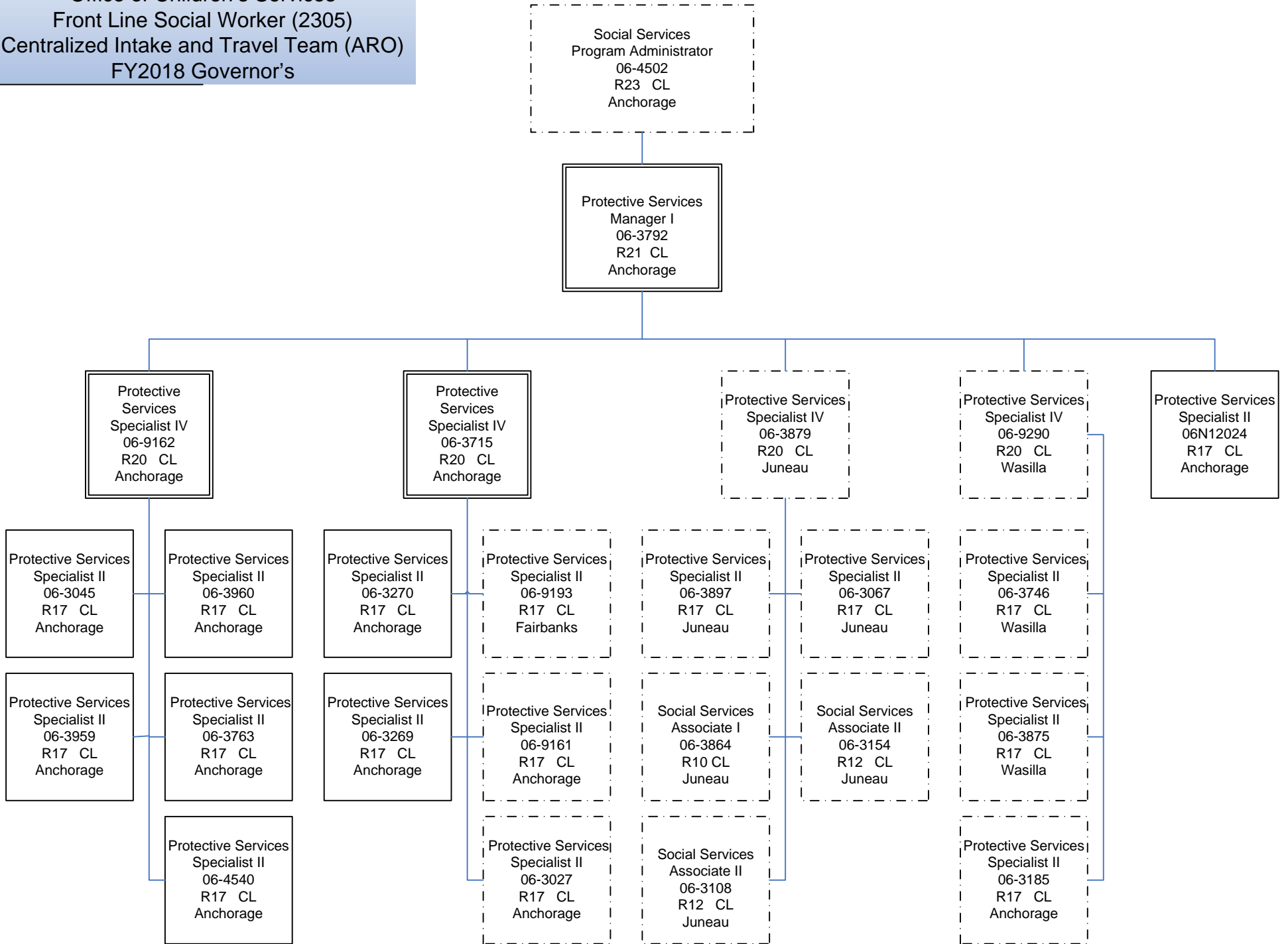
QUALITY ASSURANCE UNIT

LICENSING UNIT



Count: 40 FT

Health and Social Services
 Office of Children's Services
 Front Line Social Worker (2305)
 Centralized Intake and Travel Team (ARO)
 FY2018 Governor's



Count: 10 FT

Health and Social Services
 Office of Children's Services
 Front Line Social Worker (2305)
 Northern Region
 FY2018 Governor's

Protective Services
 Manager II
 06-4507
 R22 CL
 Fairbanks

Protective Services
 Manager I
 06-3014
 R21 CL
 Fairbanks

Nurse IV
 (Psychiatric)
 06-4601
 R22 CL
 Fairbanks

Protective Services
 Specialist III
 06-9182
 R19 CL
 Fairbanks

INTAKE UNIT

Protective Services
 Specialist IV
 06-3715
 R20 CL
 Anchorage

Protective Services
 Specialist IV
 06-3770
 R20 CL
 Nome

Protective Services
 Specialist IV
 06-3724
 R20 CL
 Fairbanks

Protective Services
 Specialist IV
 06-4551
 R20 CL
 Fairbanks

Protective Services
 Specialist IV
 06-3412
 R20 CL
 Fairbanks

Protective Services
 Specialist IV
 06-3950
 R20 CL
 Fairbanks

Protective Services
 Specialist III
 06-4553
 R19 CL
 Fairbanks

Protective Services
 Specialist II
 06-3027
 R17 CL
 Anchorage

Office Assistant I
 06-3039
 R8 CL
 Nome

Protective Services
 Specialist II
 06-4554
 R17 CL
 Nome

Protective Services
 Specialist II
 06-3066
 R17 CL
 Fairbanks

Protective Services
 Specialist II
 06-3751
 R17 CL
 Fairbanks

Protective Services
 Specialist II
 06-3433
 R17 CL
 Fairbanks

Social Services
 Associate II
 06-3389
 R12 CL
 Fairbanks

Protective Services
 Specialist II
 06-9161
 R17 CL
 Anchorage

Protective Services
 Specialist I
 06-3356
 R15 CL
 Nome

Protective Services
 Specialist I
 06-3947
 R15 CL
 Nome

Protective Services
 Specialist II
 06-3749
 R17 CL
 Fairbanks

Protective Services
 Specialist II
 06-9192
 R17 CL
 Fairbanks

Social Services
 Associate II
 06-3750
 R12 CL
 Fairbanks

Protective Services
 Specialist I
 06-4552
 R15 CL
 Fairbanks

Protective Services
 Specialist II
 06-9193
 R17 CL
 Fairbanks

Protective Services
 Specialist II
 06-4659
 R17 CL
 Nome

Protective Services
 Specialist I
 06-9322
 R15 CL
 Nome

Protective Services
 Specialist II
 06-9191
 R17 CL
 Fairbanks

Protective Services
 Specialist II
 06-3997
 R17 CL
 Fairbanks

Protective Services
 Specialist II
 06-3073
 R17 CL
 Fairbanks

Protective Services
 Specialist II
 06-3140
 R17 CL
 Fairbanks

IND LIV

Social Services
 Program
 Coordinator
 06-1350
 R20 CL
 Juneau

Social Services
 Associate II
 06-9157
 R12 CL
 Nome

Protective Services
 Specialist II
 06-9160
 R17 CL
 Fairbanks

Protective Services
 Specialist II
 06-3350
 R17 CL
 Fairbanks

Protective Services
 Specialist II
 06-3766
 R17 CL
 Fairbanks

Protective Services
 Specialist II
 06-3765
 R17 CL
 Fairbanks

Protective Services
 Specialist II
 06-9142
 R17 CL
 Fairbanks

Protective Services
 Specialist II
 06-3434
 R17 CL
 Fairbanks

Protective Services
 Specialist II
 06-3217
 R17 CL
 Fairbanks

Protective Services
 Specialist II
 06-3159
 R17 CL
 Fairbanks

Protective Services
 Specialist II
 06-4657
 R17 CL
 Fairbanks

Social Services
 Associate I
 06-9321
 R10 CL
 Fairbanks

Social Services
 Associate II
 06-3857
 R12 CL
 Fairbanks

Protective Services
 Specialist II
 06-4558
 R17 CL
 Fairbanks

Protective Services
 Specialist I
 06-3436
 R15 CL
 Fairbanks

Count: 44 FT

Health and Social Services
Office of Children's Services
Front Line Social Worker (2305)
Northern Region
FY2018 Governor's

Protective Services
Manager II
06-4507
R22 CL
Fairbanks

ADMIN UNIT

Administrative
Operations Manager II
06-0621
R23 CL
Juneau

LICENSING UNIT

Community Care
Licensing
Specialist III
06-4567
R20 CL
Fairbanks

Social Services
Associate II
06-3946
R12 CL
Fairbanks

Protective
Services
Manager I
06-3016
R21 CL
Fairbanks

Protective
Services
Specialist III
06-3954
R19 CL
Fairbanks

Protective
Services
Specialist III
06-3102
R19 CL
Fairbanks

Administrative
Officer II
06-3115
R19 CL
Fairbanks

Community Care
Licensing
Specialist II
06-3902
R18 CL
Fairbanks

Protective
Services
Specialist IV
06-3200
R20 CL
Fairbanks

Protective
Services
Specialist IV
06-3462
R20 CL
Barrow

Protective
Services
Specialist IV
06-9159
R20 CL
Kotzebue

Protective
Services
Specialist IV
06-3047
R20 CL
Delta Junction

Protective Services
Specialist II
06-3957
R17 CL
Fairbanks

Eligibility
Technician II
06-4596
R14 CL
Fairbanks

Eligibility
Technician II
06-8075
R14 CL
Fairbanks

Office Assistant II
06-4568
R10 CL
Fairbanks

Protective Services
Specialist I
06-4556
R15 CL
Fairbanks

Social Services
Associate II
06-3855
R12 CL
Barrow

Social Services
Associate II
06-4663
R12 CL
Kotzebue

Social Services
Associate II
06-3206
R12 CL
Delta Junction

Eligibility
Technician II
06-3955
R14 CL
Fairbanks

Administrative
Assistant II
06-3623
R14 CL
Fairbanks

Community Care
Licensing
Specialist I
06-4655
R16 CL
Fairbanks

Protective Services
Specialist II
06-3271
R17 CL
Fairbanks

Protective Services
Specialist II
06-3893
R17 CL
Barrow

Protective Services
Specialist I
06-4600
R15 CL
Kotzebue

Protective Services
Specialist II
06-3188
R17 CL
Delta Junction

Accounting Clerk
06-3867
R10 CL
Fairbanks

Accounting Clerk
06-4638
R10 CL
Fairbanks

Community Care
Licensing
Specialist I
06-3369
R16 CL
Fairbanks

Protective Services
Specialist II
06-3182
R17 CL
Fairbanks

Protective Services
Specialist II
06-3180
R17 CL
Barrow

Protective Services
Specialist II
06-3418
R17 CL
Kotzebue

Protective Services
Specialist II
06-3880
R17 CL
McGrath

Office Assistant II
06-3036
R10 CL
Fairbanks

Office Assistant II
06-4639
R10 CL
Fairbanks

Community Care
Licensing
Specialist I
06-9181
R16 CL
Fairbanks

Social Services
Associate II
06-3196
R12 CL
Fairbanks

Protective Services
Specialist II
06-3172
R17 CL
Kotzebue

Social Services
Associate II
06-3064
R12 CL
McGrath

Office Assistant IV
06-3037
R12 CL
Fairbanks

Community Care
Licensing
Specialist I
06-4557
R16 CL
Fairbanks

Protective Services
Specialist II
06-3876
R17 CL
Fairbanks

Office Assistant I
06-4605
R8 CL
Fairbanks

Office Assistant I
06-4665
R8 CL
Fairbanks

Office Assistant I
06-3856
R8 CL
Fairbanks

Office Assistant I
06-3730
R8 CL
Fairbanks

Count: 46 FT

Health and Social Services
 Office of Children's Services
 Front Line Social Worker (2305)
 Southcentral Regional Office
 FY2018 Governor's

ADMIN UNIT

LICENSING UNIT

ET UNIT

INTAKE UNIT

Protective Services
 Manager II
 06-3074
 R22 CL
 Wasilla

Administrative Operations
 Manager II
 06-0621
 R23 CL
 Juneau

Community Care
 Licensing Specialist III
 06-9273
 R20 CL
 Anchorage

Social Services
 Program
 Coordinator
 06-3075
 R20 CL
 Juneau

Protective Services
 Specialist IV
 06-9290
 R20 CL
 Wasilla

Protective Services
 Manager I
 06-9289
 R21 CL
 Wasilla

Protective Services
 Manager I
 06-3015
 R21 CL
 Wasilla

Administrative Officer II
 06-3114
 R19 CL
 Wasilla

Community Care
 Licensing Specialist II
 06-3077
 R18 CL
 Wasilla

Community Care
 Licensing Specialist II
 06-9274
 R18 CL
 Wasilla

Eligibility
 Technician IV
 06-3278
 R17 CL
 Wasilla

Protective Services
 Specialist II
 06-3746
 R17 CL
 Wasilla

Protective Services
 Specialist III
 06-4652
 R19 CL
 Wasilla

Nurse IV
 (Psychiatric)
 06-4604
 R22 CL
 Wasilla

Administrative
 Assistant II
 06-3970
 R14 CL
 Wasilla

Administrative
 Assistant II
 06-4641
 R14 CL
 Wasilla

Office Assistant II
 06-3769
 R10 CL
 Wasilla

Community Care
 Licensing Specialist I
 06-3398
 R16 CL
 Kenai

Eligibility
 Technician II
 06-3265
 R14 CL
 Wasilla

Protective Services
 Specialist II
 06-3875
 R17 CL
 Wasilla

Protective Services
 Specialist IV
 06-3368
 R20 CL
 Wasilla

Accounting
 Technician I
 06-4602
 R12 CL
 Wasilla

Office Assistant II
 06-9328
 R10 CL
 Wasilla

Office Assistant II
 06-4009
 R10 CL
 Wasilla

Community Care
 Licensing Specialist I
 06-9177
 R16 CL
 Wasilla

Community Care
 Licensing Specialist I
 06-9285
 R16 CL
 Wasilla

Eligibility
 Technician II
 06-4644
 R14 CL
 Wasilla

Protective Services
 Specialist II
 06-9278
 R17 CL
 Wasilla

Protective Services
 Specialist I
 06-3790
 R15 CL
 Kenai

Accounting Clerk
 06-3663
 R10 CL
 Wasilla

Office Assistant II
 06-4608
 R10 CL
 Wasilla

Accounting Clerk
 06-9288
 R10 CL
 Wasilla

Community Care
 Licensing Specialist I
 06-9333
 R16 CL
 Wasilla

Community Care
 Licensing Specialist I
 06-9179
 R16 CL
 Wasilla

Eligibility
 Technician II
 06-4647
 R14 CL
 Wasilla

Office Assistant II
 06-4672
 R10 CL
 Wasilla

IND LIV

Social Services
 Program
 Coordinator
 06-1350
 R20 CL
 Juneau

Protective Services
 Specialist II
 06-9140
 R17 CL
 Wasilla

Protective Services
 Specialist II
 06-9334
 R17 CL
 Wasilla

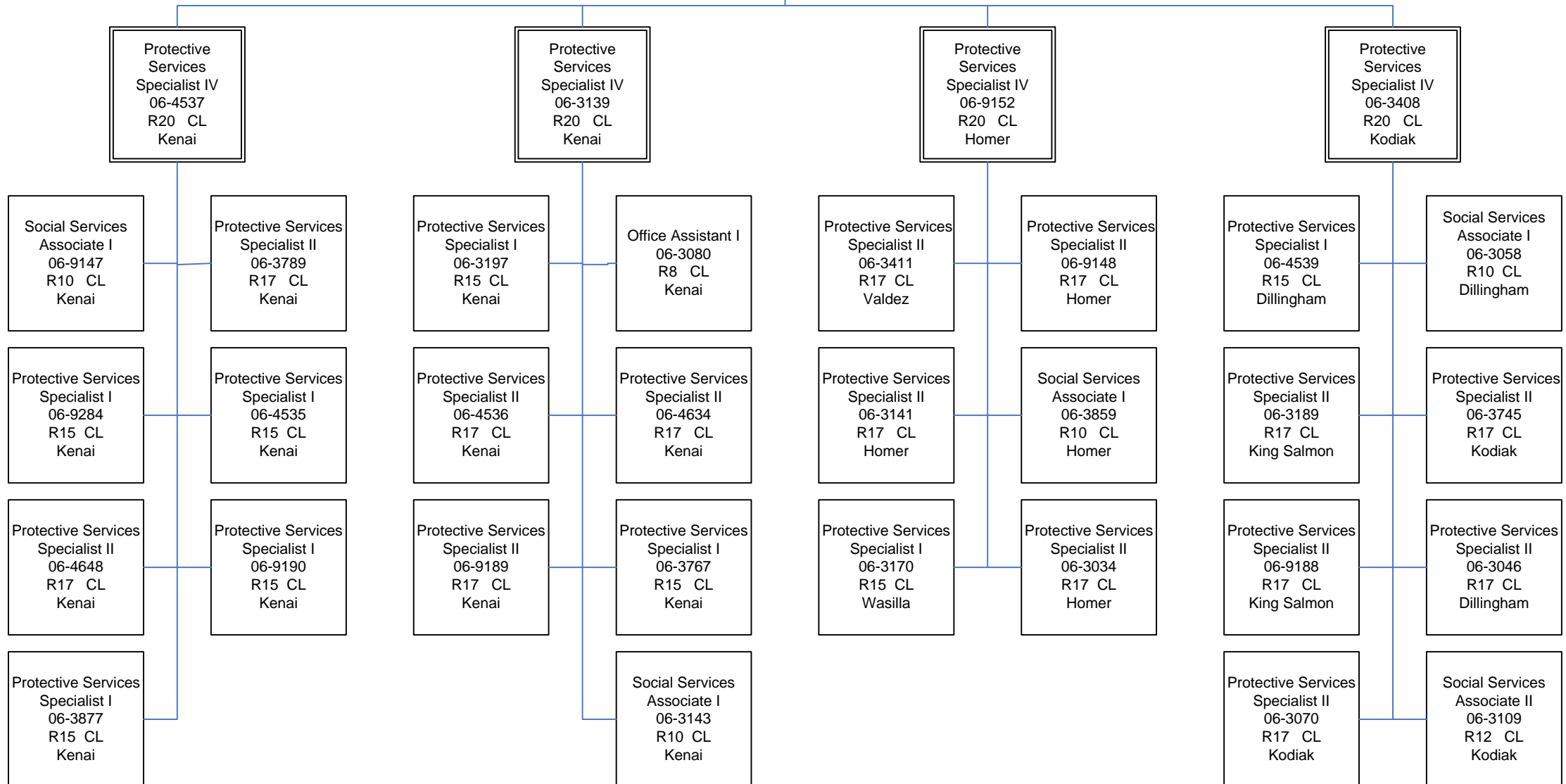
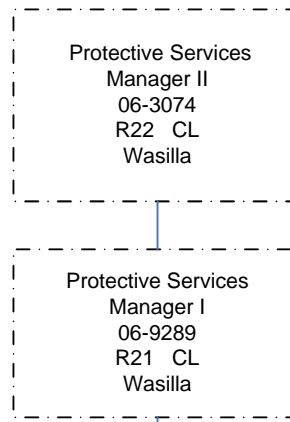
Office Assistant II
 06-9287
 R10 CL
 Wasilla

Community Care
 Licensing Specialist I
 06-4653
 R16 CL
 Wasilla

Community Care
 Licensing Specialist I
 06-9178
 R16 CL
 Kenai

Community Care
 Licensing Specialist I
 06-9332
 R16 CL
 Wasilla

Health and Social Services
 Office of Children's Services
 Front Line Social Worker (2305)
 Southcentral Regional Office
 FY2018 Governor's



Health and Social Services
 Office of Children's Services
 Front Line Social Worker (2305)
 Southcentral Regional Office
 FY2018 Governor's

Protective Services
 Manager II
 06-3074
 R22 CL
 Wasilla

Protective Services
 Manager I
 06-3015
 R21 CL
 Wasilla

Protective Services
 Specialist IV
 06-3691
 R20 CL
 Wasilla

Protective Services
 Specialist IV
 06-3126
 R20 CL
 Wasilla

Protective Services
 Specialist III
 06-9291
 R19 CL
 Wasilla

Protective Services
 Specialist IV
 06-4532
 R20 CL
 Wasilla

Protective Services
 Specialist IV
 06-9183
 R20 CL
 Wasilla

Social Services
 Associate I
 06-9276
 R10 CL
 Wasilla

Protective Services
 Specialist II
 06-9149
 R17 CL
 Wasilla

Protective Services
 Specialist II
 06-4534
 R17 CL
 Wasilla

Social Services
 Associate II
 06-3449
 R12 CL
 Wasilla

Protective Services
 Specialist I
 06-4651
 R15 CL
 Wasilla

Protective Services
 Specialist II
 06-9184
 R17 CL
 Wasilla

Protective Services
 Specialist II
 06-3202
 R17 CL
 Wasilla

Social Services
 Associate II
 06-3866
 R12 CL
 Wasilla

Protective Services
 Specialist II
 06-3020
 R17 CL
 Wasilla

Protective Services
 Specialist I
 06-1805
 R15 CL
 Wasilla

Protective Services
 Specialist II
 06-4533
 R17 CL
 Wasilla

Protective Services
 Specialist II
 06-3365
 R17 CL
 Wasilla

Protective Services
 Specialist II
 06-3422
 R17 CL
 Wasilla

Protective Services
 Specialist II
 06-9331
 R17 CL
 Wasilla

Protective Services
 Specialist II
 06-3243
 R17 CL
 Wasilla

Protective Services
 Specialist I
 06-9283
 R15 CL
 Wasilla

Protective Services
 Specialist II
 06-9329
 R17 CL
 Wasilla

Protective Services
 Specialist II
 06-9187
 R17 CL
 Wasilla

Protective Services
 Specialist II
 06-3940
 R17 CL
 Wasilla

Protective Services
 Specialist II
 06-3407
 R17 CL
 Wasilla

Protective Services
 Specialist I
 06-3744
 R15 CL
 Wasilla

Social Services
 Associate I
 06-3547
 R10 CL
 Wasilla

Protective Services
 Specialist I
 06-9186
 R15 CL
 Wasilla

Protective Services
 Specialist I
 06-9146
 R15 CL
 Wasilla

Protective Services
 Specialist I
 06-3194
 R15 CL
 Gakona

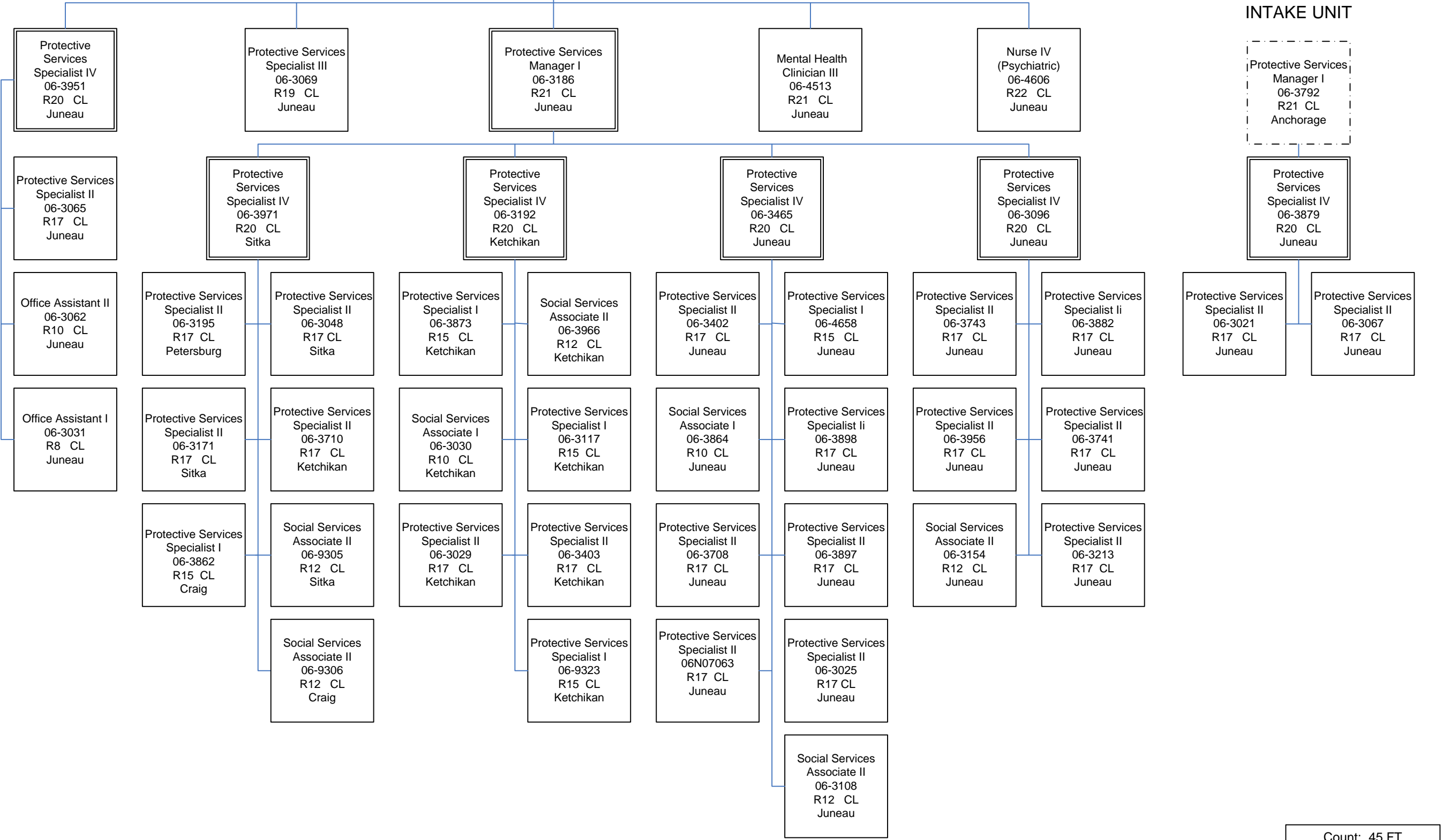
Protective Services
 Specialist II
 06-9330
 R17 CL
 Wasilla

Social Services
 Associate I
 06-3860
 R10 CL
 Gakona

Count: 32 FT

Health and Social Services
 Office of Children's Services
 Front Line Social Worker (2305)
 Southeast Regional Office
 FY2018 Governor's

Protective Services
 Manager II
 06-4505
 R22 CL
 Juneau



Count: 45 FT

Health and Social Services
Office of Children's Services
Front Line Social Worker (2305)
Southeast Regional Office
FY2018 Governor's

STATE OFFICE
SUPERVISION
Southeast Regional Office

ADMIN UNIT

Administrative
Operations
Manager II
06-0621
R23 CL
Juneau

Administrative
Officer I
06-3771
R17 CL
Juneau

Eligibility
Technician II
06-4646
R14 CL
Juneau

Administrative
Assistant II
06-3609
R14 CL
Juneau

Accounting Clerk
06-9268
R10 CL
Juneau

IND LIV

Social Services
Program
Coordinator
06-1350
R20 CL
Juneau

Protective Services
Specialist II
06-9141
R17 CL
Juneau

LICENSING UNIT

Community Care
Licensing
Specialist III
06-4567
R20 CL
Fairbanks

Community Care
Licensing
Specialist II
06-3370
R18 CL
Juneau

Community Care
Licensing
Specialist I
06-9175
R16 CL
Juneau

Community Care
Licensing
Specialist I
06-3367
R16 CL
Ketchikan

Count: 8 FT

Health and Social Services
Office of Children's Services
Front Line Social Worker (2305)
Western Regional Office
FY2018 Governor's

