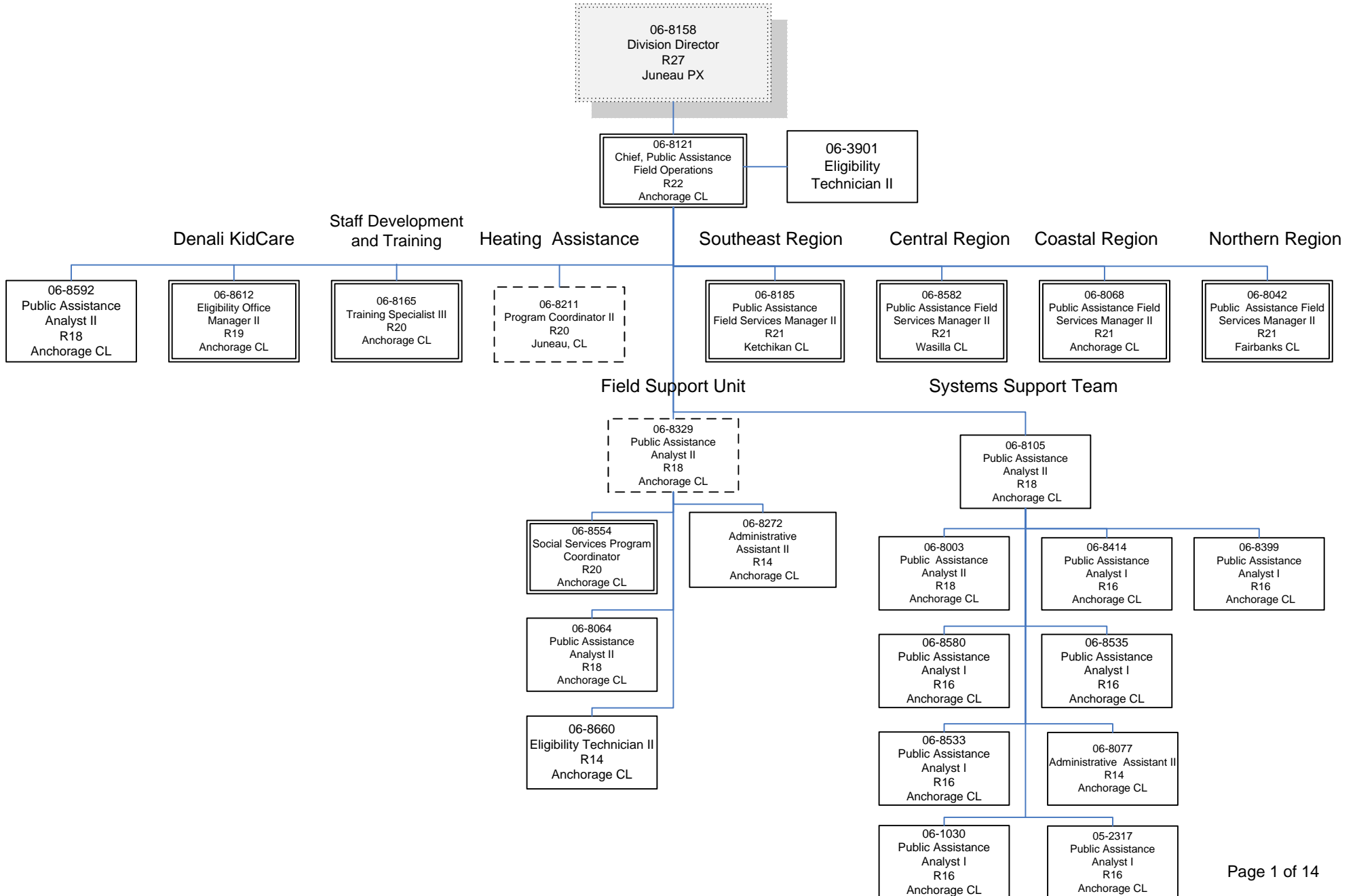
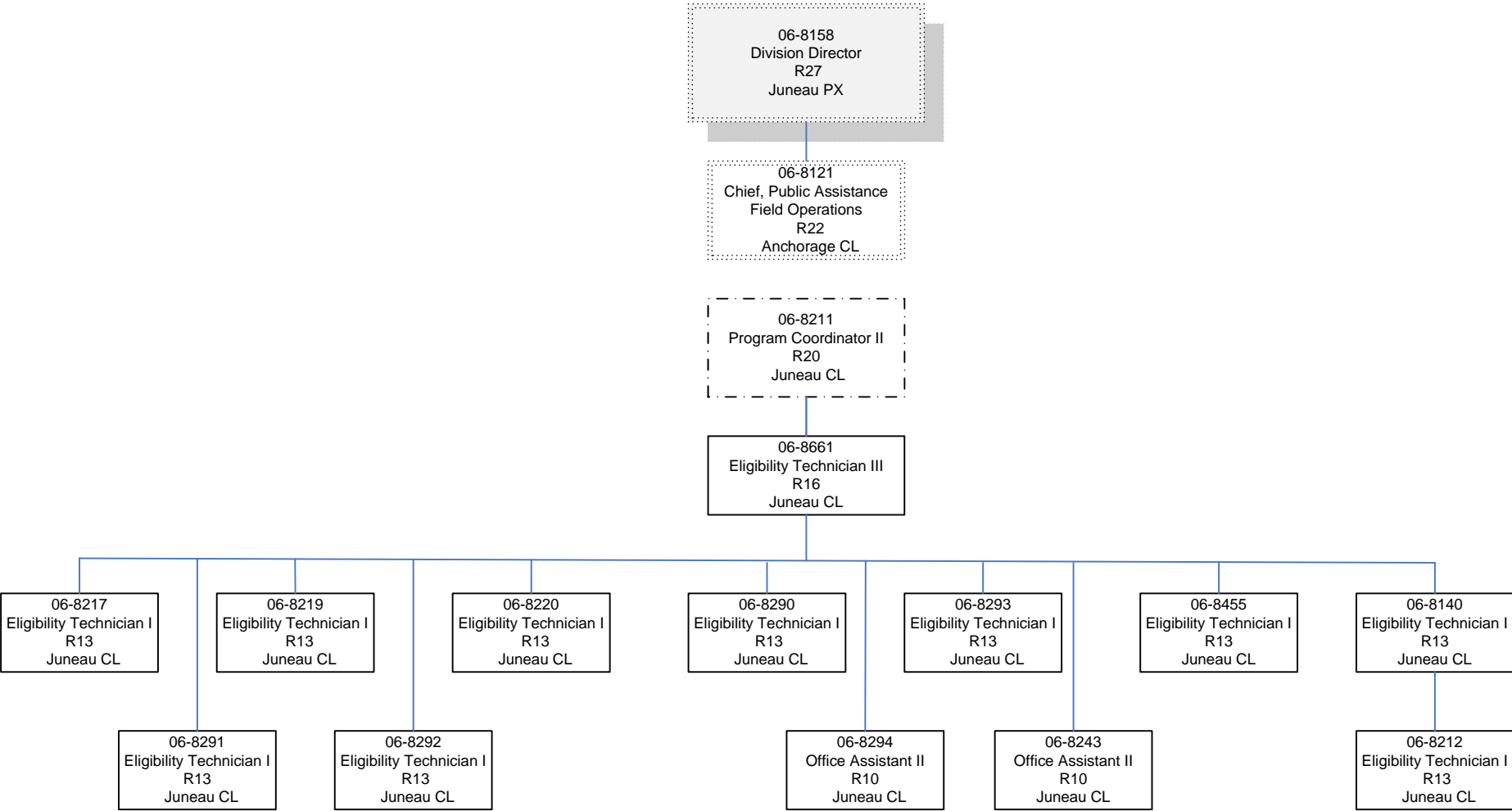


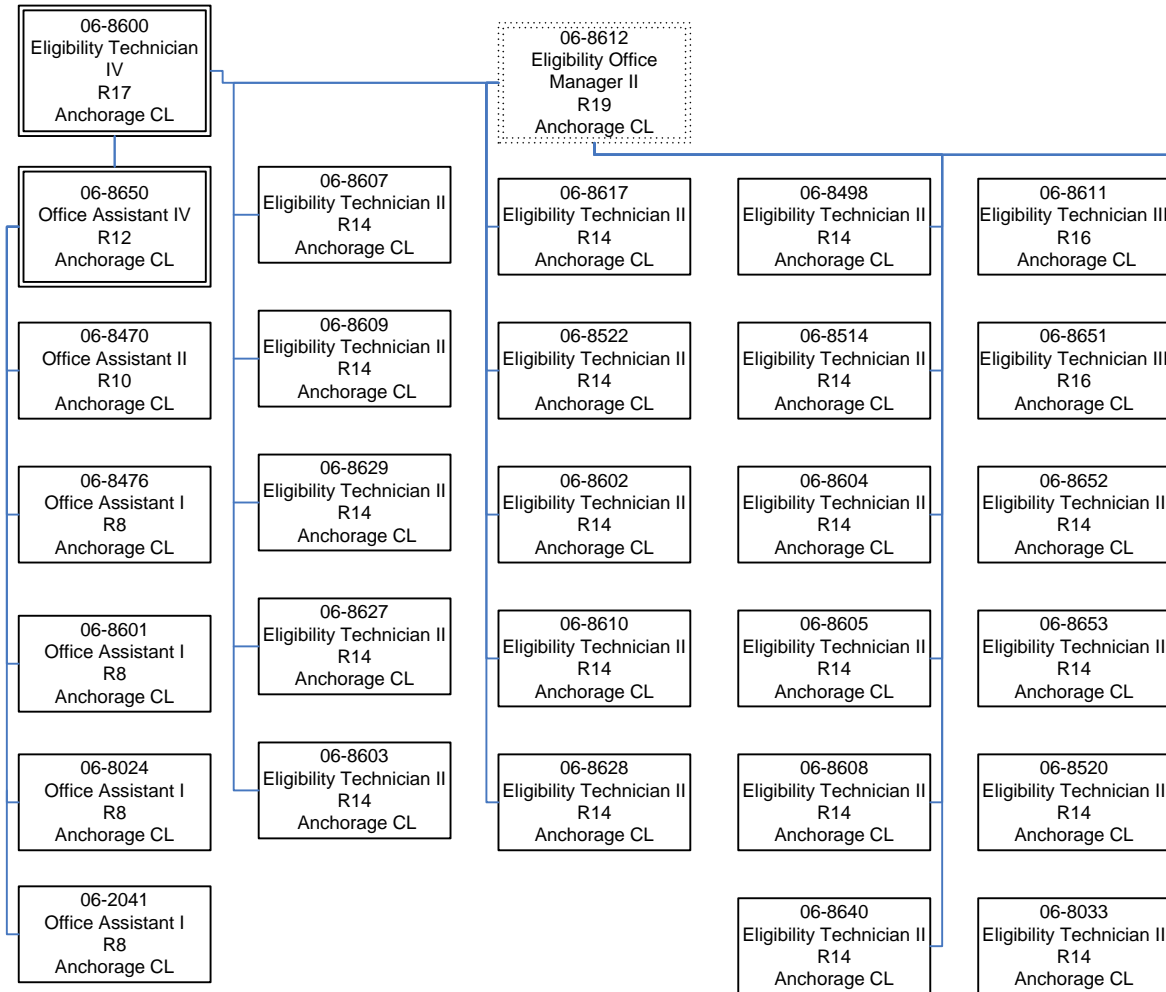
DEPARTMENT OF HEALTH AND SOCIAL SERVICES
 Division of Public Assistance
 Field Services
 Administrative



DEPARTMENT OF HEALTH AND SOCIAL SERVICES
 Division of Public Assistance
 Energy Assistance Program/Field Services



DEPARTMENT OF HEALTH AND SOCIAL SERVICES
 Division of Public Assistance
 Field Services
 Coastal Field Office 2



DEPARTMENT OF HEALTH AND SOCIAL SERVICES
Division of Public Assistance
Field Services
Staff Development and Training

06-8165
Training Specialist III
R20
Anchorage CL

06-8308
Training Specialist I
R16
Anchorage CL

06-8613
Training Specialist II
R18
Anchorage CL

06-8210
Training Specialist I
R16
Juneau CL

02-7625
Training Specialist II
R18
Anchorage CL

06-8309
Training Specialist II
R18
Anchorage CL

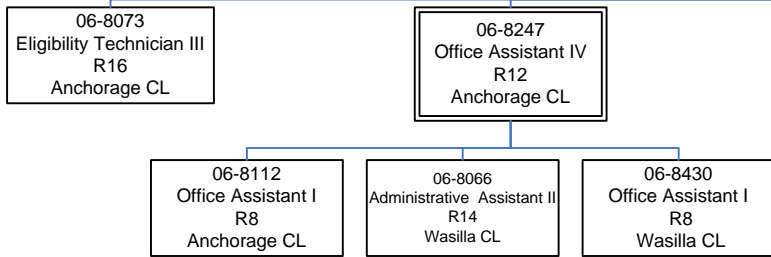
06-8422
Training Specialist II
R18
Anchorage CL

06-8339
Office Assistant III
R11
Anchorage CL

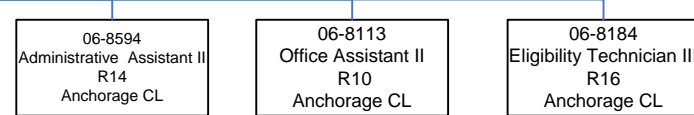
DEPARTMENT OF HEALTH AND SOCIAL SERVICES
 Division of Public Assistance
 Field Services
 Central Region
 Regional Support and Adult Public Assistance

06-8582
 Public Assistance Field
 Services Manager II
 R21
 Wasilla CL

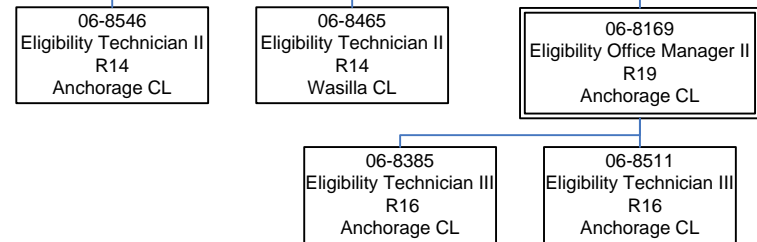
Adult Public Assistance Clerical Team



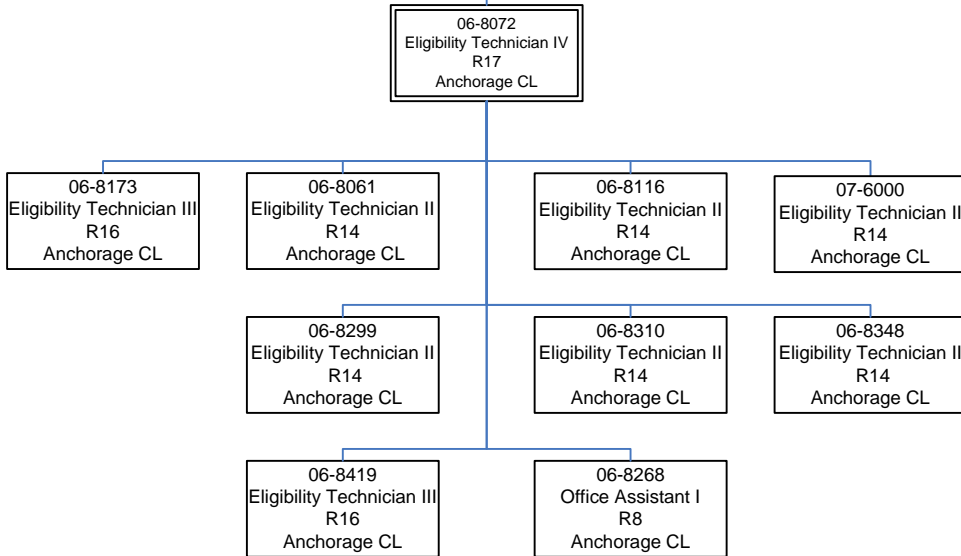
Regional Support



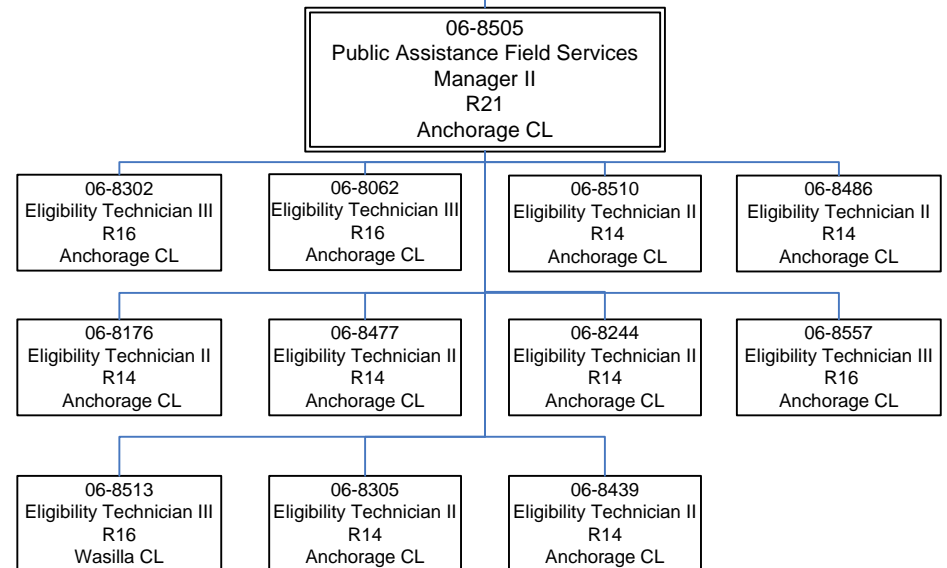
Regional Employment Support



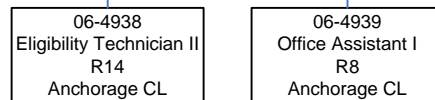
Adult Public Assistance – Team 2



Adult Public Assistance – Team 1

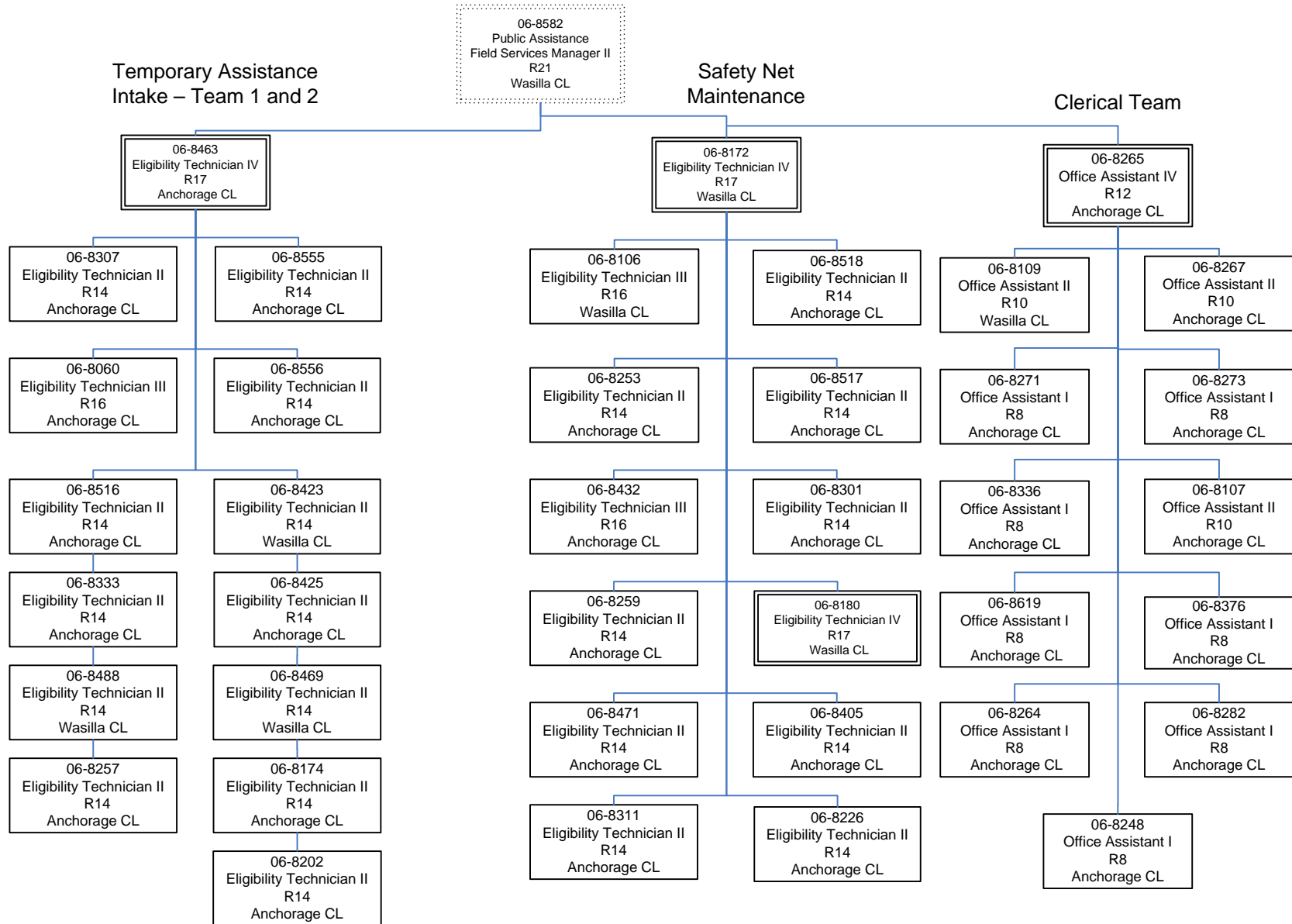


Alaska Native Medical Center – Out-stationed PCN's

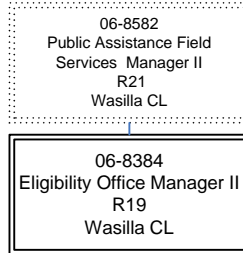


Out-stationed
 At Gateway
 Learning Center

DEPARTMENT OF HEALTH AND SOCIAL SERVICES
 Division of Public Assistance
 Field Services
 Central Region
 Anchorage/Gambell



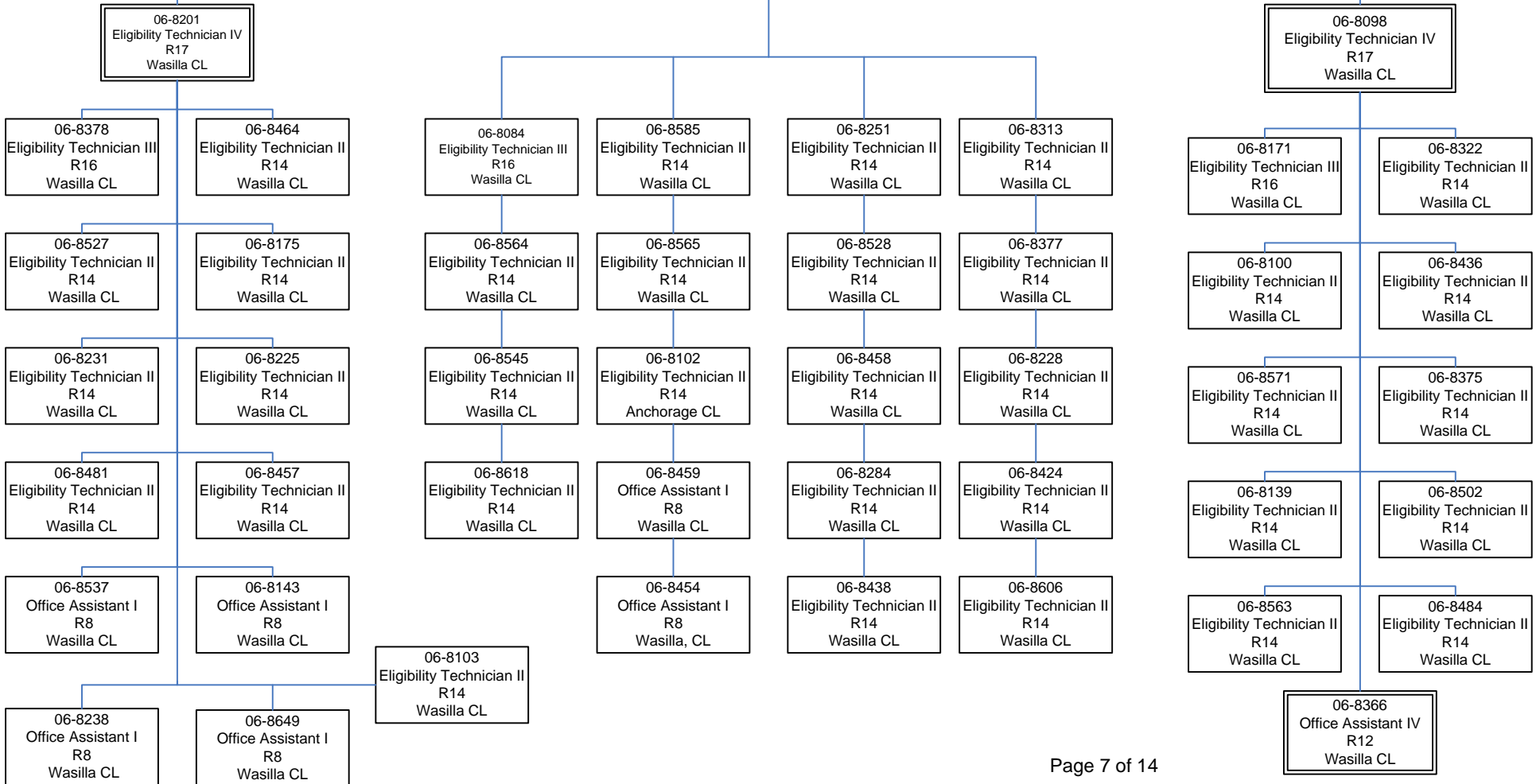
DEPARTMENT OF HEALTH AND SOCIAL SERVICES
 Division of Public Assistance
 Field Services
 Central Region
 Mat-Su



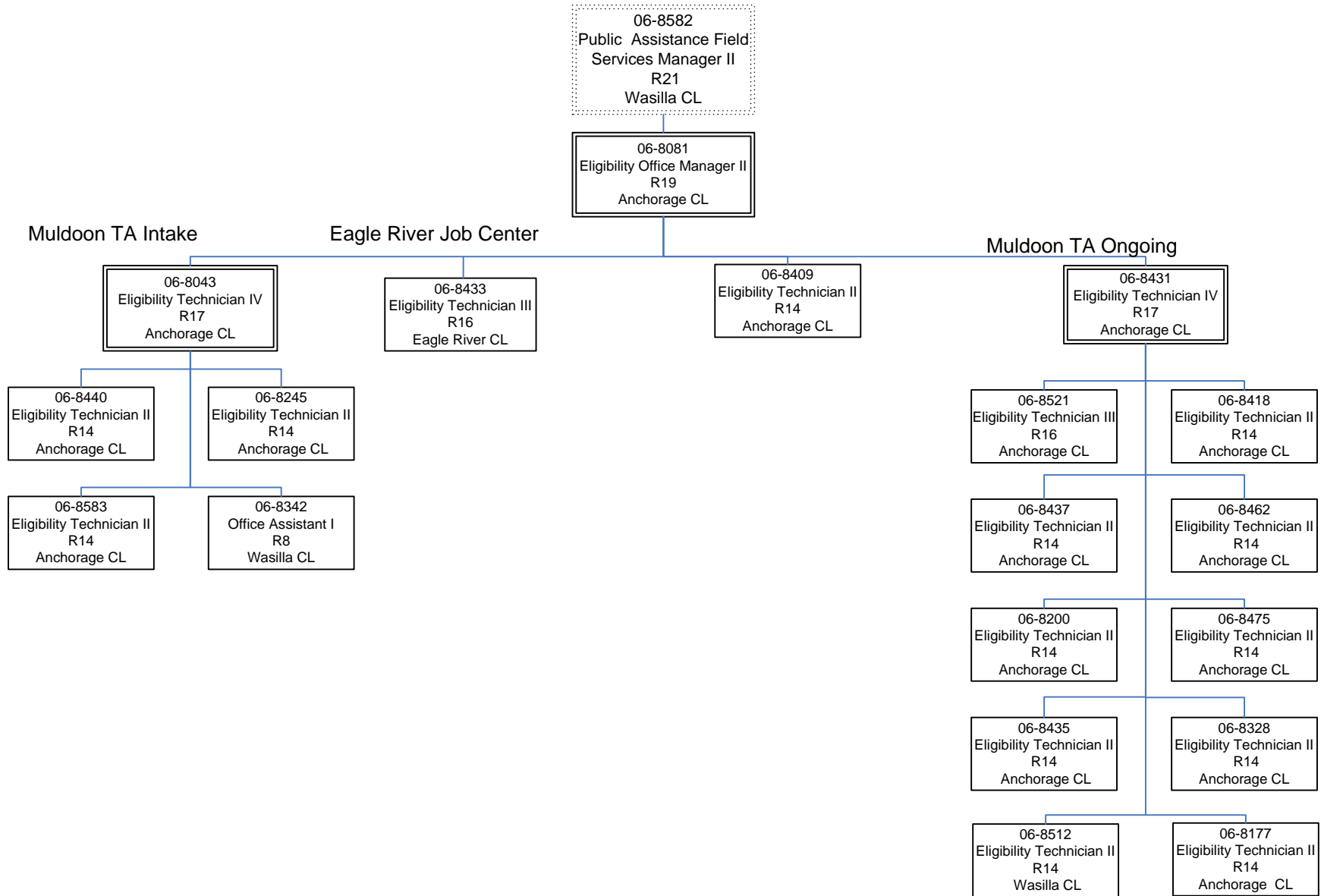
Mat-Su TA Intake

Safety Net Maintenance

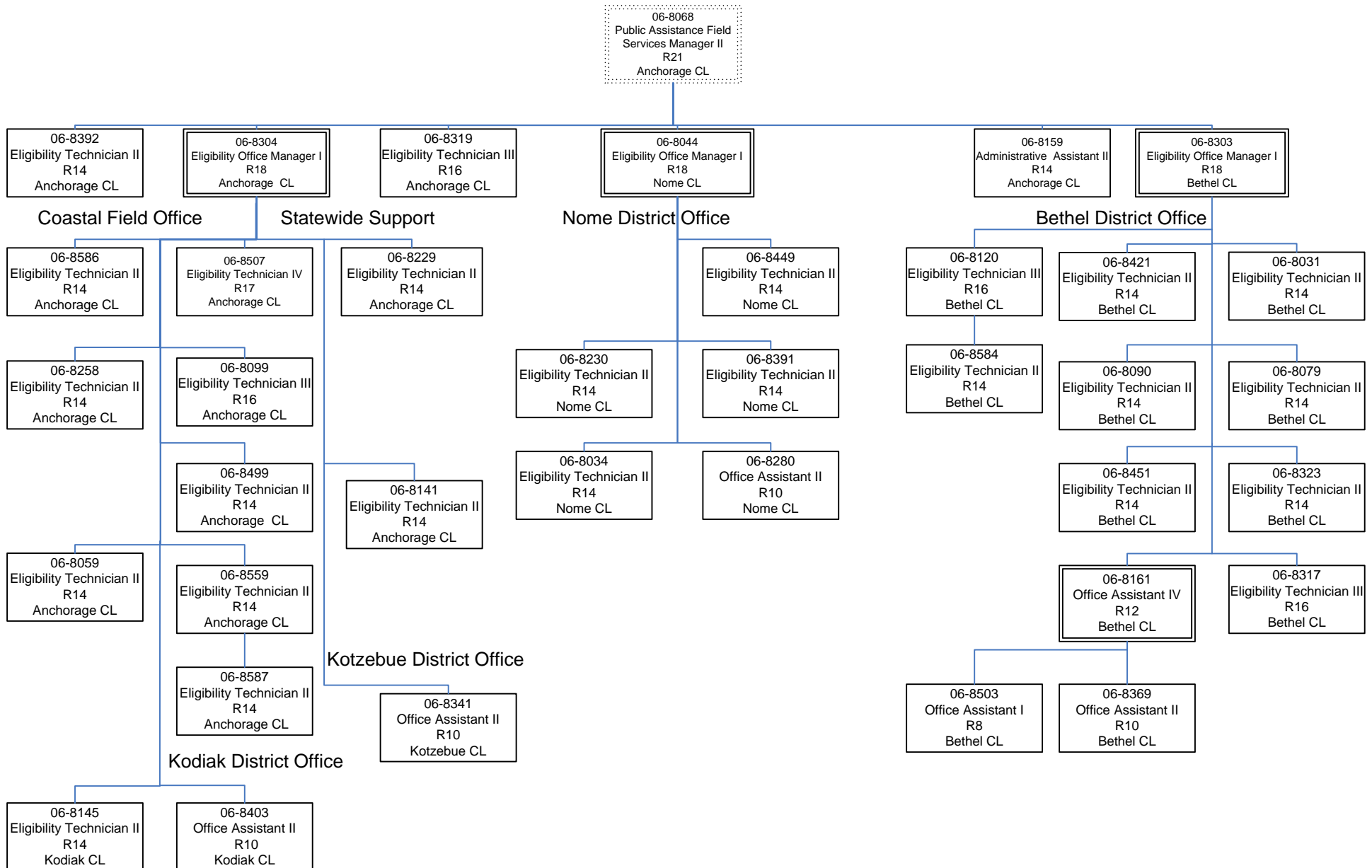
Mat-Su TA Ongoing



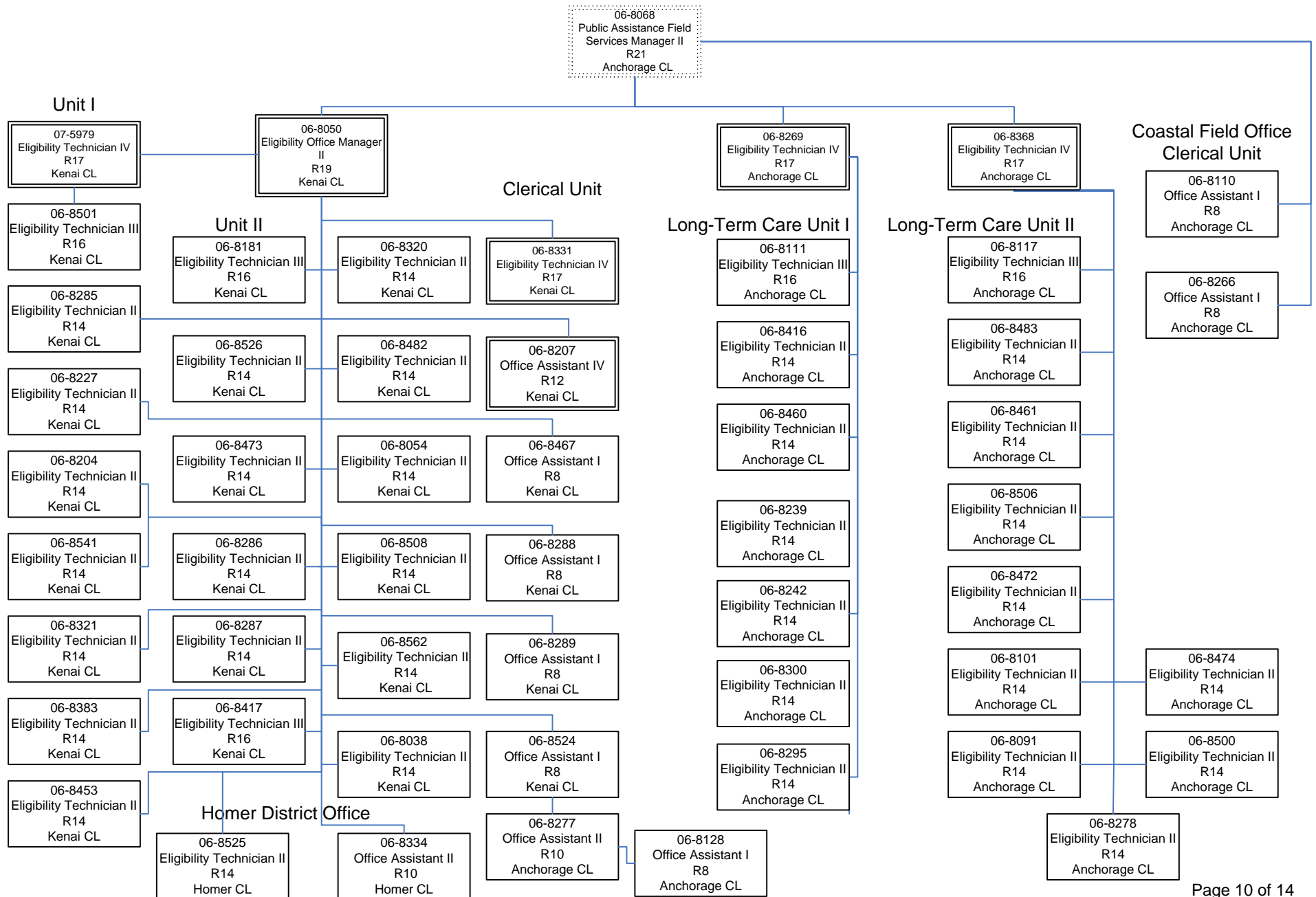
DEPARTMENT OF HEALTH AND SOCIAL SERVICES
 Division of Public Assistance
 Field Services
 Central Region
 Muldoon



DEPARTMENT OF HEALTH AND SOCIAL SERVICES
 Division of Public Assistance
 Field Services
 Coastal Region



DEPARTMENT OF HEALTH AND SOCIAL SERVICES
 Division of Public Assistance
 Field Services
 Coastal Region



DEPARTMENT OF HEALTH AND SOCIAL SERVICES
 Division of Public Assistance
 Field Services
 Northern Region

06-8042
 Public Assistance Field
 Services Manager II
 R21
 Fairbanks CL

Maintenance Team 1

Regional Team

Intake Team

Maintenance Team 2

Clerical Team

06-8315
 Eligibility Technician IV
 R17
 Fairbanks CL

06-8275
 Administrative Assistant II
 R14
 Fairbanks CL

06-8040
 Eligibility Office Manager I
 R18
 Fairbanks CL

06-8442
 Eligibility Technician IV
 R17
 Fairbanks CL

06-8208
 Office Assistant IV
 R12
 Fairbanks CL

06-8089
 Eligibility Technician II
 R14
 Fairbanks CL

06-8390
 Office Assistant II
 R10
 Fairbanks CL

06-8182
 Eligibility Technician II
 R14
 Fairbanks CL

06-8078
 Eligibility Technician II
 R14
 Fairbanks CL

06-8057
 Eligibility Technician III
 R16
 Fairbanks CL

06-8237
 Office Assistant I
 R8
 Anchorage CL

06-8150
 Eligibility Technician II
 R14
 Fairbanks CL

06-8118
 Eligibility Technician III
 R16
 Fairbanks CL

06-8479
 Eligibility Technician II
 R14
 Fairbanks CL

06-8036
 Eligibility Technician II
 R14
 Fairbanks CL

06-8446
 Eligibility Technician II
 R14
 Fairbanks CL

06-8281
 Office Assistant I
 R8
 Fairbanks CL

06-8179
 Eligibility Technician III
 R16
 Fairbanks CL

06-8316
 Eligibility Technician III
 R16
 Fairbanks CL

06-8235
 Eligibility Technician III
 R16
 Fairbanks CL

06-8260
 Eligibility Technician II
 R14
 Fairbanks CL

06-8547
 Eligibility Technician II
 R14
 Fairbanks CL

06-8335
 Office Assistant I
 R8
 Fairbanks CL

06-8162
 Eligibility Technician II
 R14
 Fairbanks CL

06-8205
 Eligibility Technician II
 R14
 Fairbanks CL

06-8566
 Eligibility Technician III
 R16
 Fairbanks CL

06-8540
 Eligibility Technician II
 R14
 Fairbanks CL

06-8236
 Eligibility Technician II
 R14
 Fairbanks CL

06-8025
 Office Assistant I
 R8
 Fairbanks CL

06-8445
 Eligibility Technician II
 R14
 Fairbanks CL

06-8051
 Eligibility Technician II
 R14
 Fairbanks CL

06-8478
 Eligibility Technician II
 R14
 Fairbanks CL

06-8444
 Eligibility Technician II
 R14
 Fairbanks CL

06-8443
 Eligibility Technician II
 R14
 Fairbanks CL

06-8593
 Office Assistant I
 R8
 Fairbanks CL

06-8420
 Eligibility Technician II
 R14
 Fairbanks CL

06-8261
 Eligibility Technician II
 R14
 Fairbanks CL

06-8261
 Eligibility Technician II
 R14
 Fairbanks CL

06-8055
 Eligibility Technician II
 R14
 Fairbanks CL

06-8318
 Eligibility Technician II
 R14
 Fairbanks CL

06-8276
 Office Assistant II
 R10
 Fairbanks CL

06-8045
 Eligibility Technician II
 R14
 Fairbanks CL

06-8560
 Eligibility Technician II
 R14
 Fairbanks CL

06-8560
 Eligibility Technician II
 R14
 Fairbanks CL

06-8441
 Eligibility Technician II
 R14
 Fairbanks CL

06-8480
 Eligibility Technician II
 R14
 Fairbanks CL

06-8067
 Office Assistant I
 R8
 Fairbanks CL

06-8203
 Eligibility Technician III
 R16
 Fairbanks CL

06-8558
 Eligibility Technician II
 R14
 Fairbanks CL

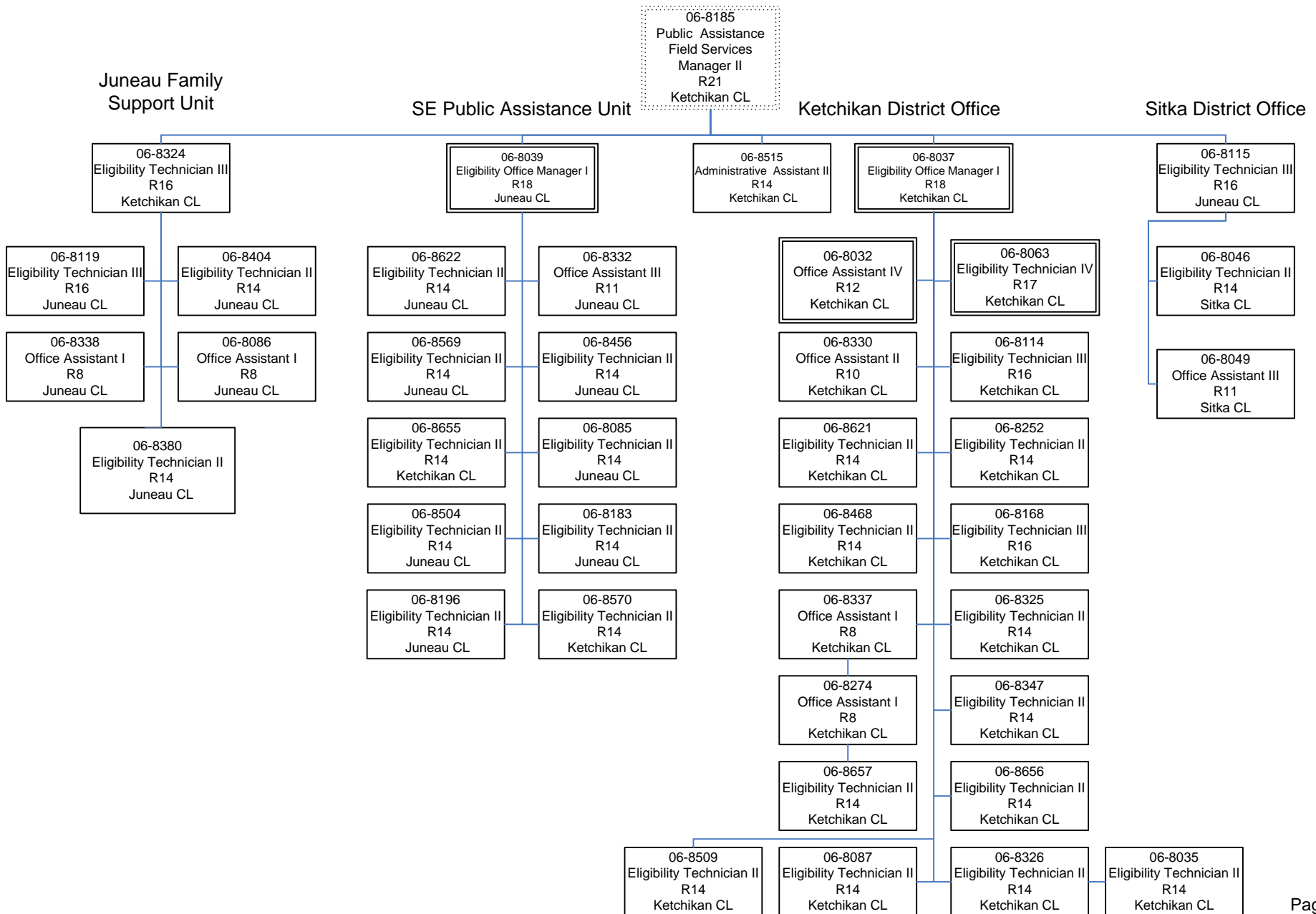
06-8558
 Eligibility Technician II
 R14
 Fairbanks CL

06-8408
 Eligibility Technician II
 R14
 Fairbanks CL

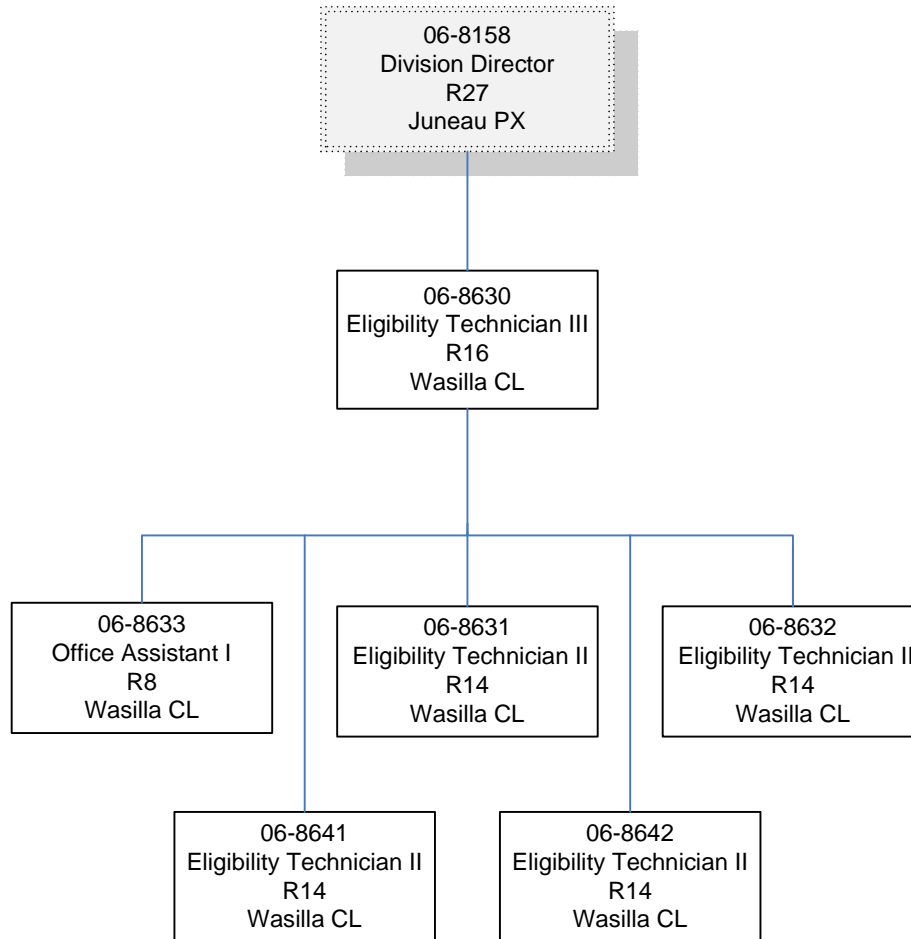
06-8279
 Office Assistant I
 R8
 Fairbanks CL

06-8434
 Eligibility Technician II
 R14
 Fairbanks CL

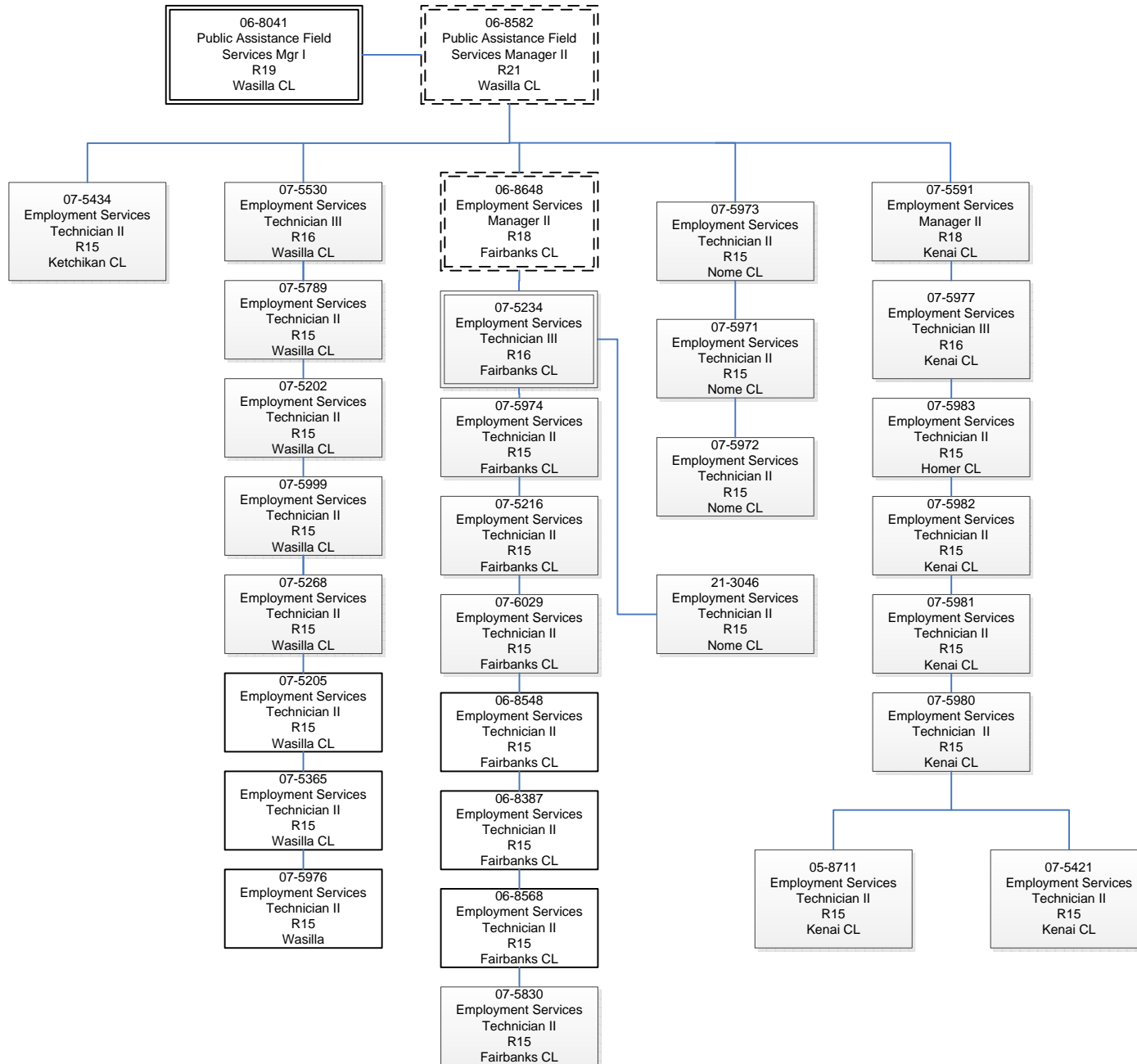
DEPARTMENT OF HEALTH AND SOCIAL SERVICES
 Division of Public Assistance
 Field Services
 Southeast Region



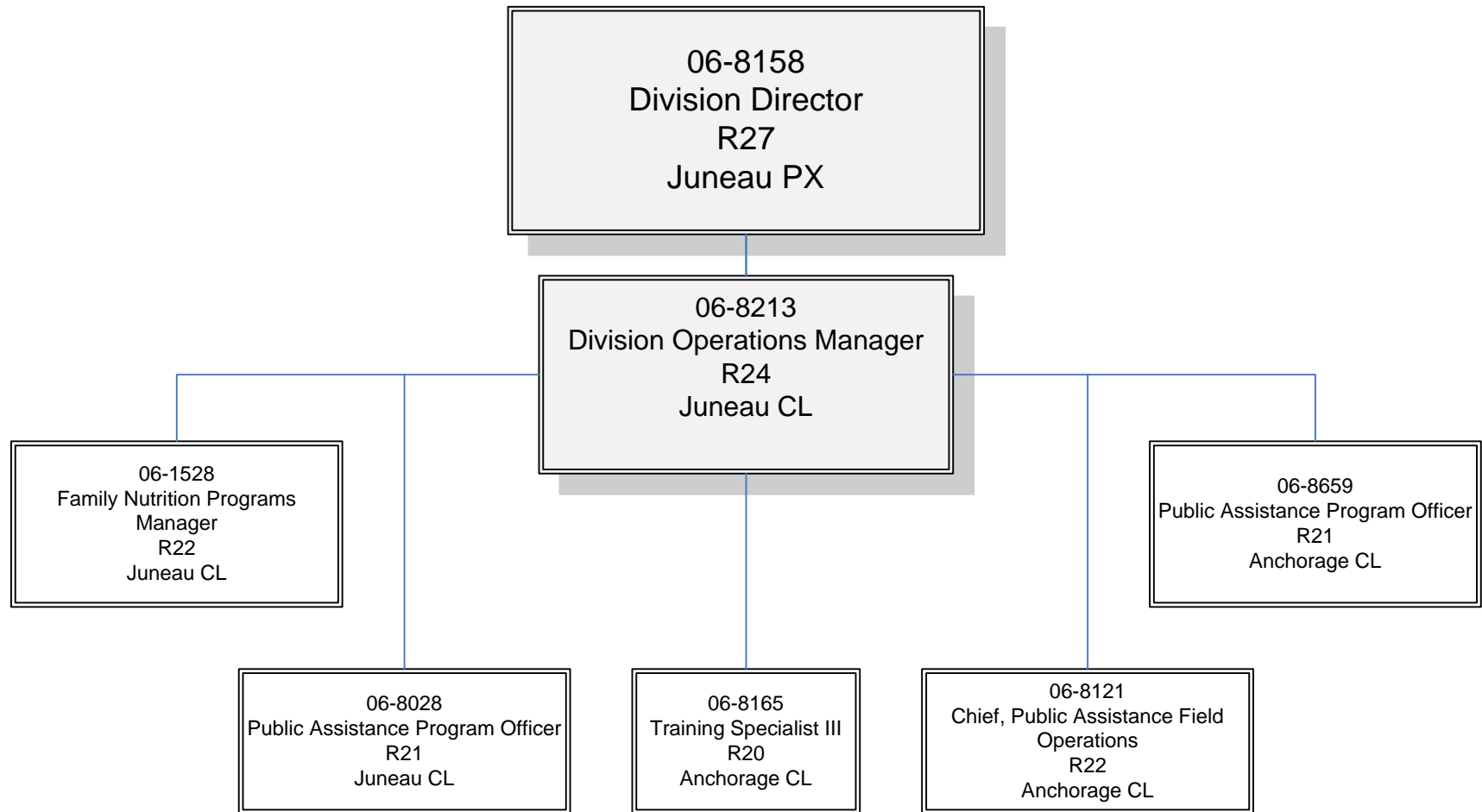
DEPARTMENT OF HEALTH AND SOCIAL SERVICES
Division of Public Assistance
Senior Benefits Program/Mat-Su Maintenance



DEPARTMENT OF HEALTH AND
SOCIAL SERVICES
Division of Public Assistance
Field Services/Work Services



DEPARTMENT OF HEALTH AND SOCIAL SERVICES
Division of Public Assistance
Directors Office



DEPARTMENT OF HEALTH AND SOCIAL SERVICES
Division of Public Assistance
EIS Replacement Project Office

