

DHSS
 Division of Alaska Pioneer Homes
 Anchorage Pioneer Home

Pioneers' Home
 Administrator II
 02-7540 R24 PX
 Anchorage

Assistant Administrator
 02-7578 R21 CL
 Anchorage

Protective Services
 Specialist III
 06-6209 R19 CL
 Anchorage

Social Services
 Associate II
 02-7928 R12 CL

Nurse IV
 02-7314 R22 CL
 Anchorage

Maintenance

Environmental Services

Food Services

Professional Services

Administration

Assisted Living Units

Maintenance
 General Foreman
 02-7445 R52 CL
 Anchorage

Environmental
 Services Foreman
 02-7595 R57 CL
 Anchorage

Food Services
 Manager
 (Contract)
 Anchorage

Recreational
 Therapist II
 02-7474 R16 CL
 Anchorage

Supply Technician II
 02-7476 R12 CL
 Anchorage

Delaney Garden
 Nurse III
 02-7410 R20 CL
 Anchorage

Southside
 Assisted Living
 Care Coordinator
 02-7418 R17 CL
 Anchorage

Sunset View
 Nurse III
 02-7417 R20 CL
 Anchorage

Nurse III
 02-7930 R20 CL
 Anchorage

Physical Therapist
 02-7408 R18 CL
 Anchorage

Maintenance
 General Journey
 02-7446 R54 CL
 02-7447 R54 CL
 02-7453 R54 CL
 02-7562 R54 CL
 06-6231 R54 CL
 Anchorage

Environmental
 Services
 Journey II
 02-7448 R60 CL
 02-7497 R60 CL
 Anchorage

Food Service
 Foreman
 02-7519 R53 CL
 Anchorage

Recreation
 Assistant
 02-7475 R11 CL
 Anchorage

Administrative
 Assistant III
 02-7430 R15 CL
 Anchorage

Nurse II
 02-7413 R19 CL
 02-7923 R19 CL
 Anchorage

Nurse II
 02-7580 R19 CL
 06-6205 R19 CL
 Anchorage

Nurse II
 02-7489 R19 CL
 06-6204 R19 CL
 06-6243 R19 CL
 Anchorage

Certified Nurse
 Aide I
 02-7432 R10 CL
 Anchorage

Certified Nurse
 Aide I
 02-7432 R10 CL
 Anchorage

Environmental
 Services
 Journey I
 02-7482 R61 CL
 02-7500 R61 CL
 02-7504 R61 CL
 02-7505 R61 CL
 02-7506 R61 CL
 02-7507 R61 CL
 02-7508 R61 CL
 02-7509 R61 CL
 02-7510 R61 CL
 02-7511 R61 CL
 02-7512 R61 CL
 02-7513 R61 CL
 02-7514 R61 CL
 02-7516 R61 CL
 02-7564 R61 CL
 02-7566 R61 CL
 02-7570 R61 CL
 Anchorage

Food Service
 Journey
 02-7450 R57 CL
 02-7491 R57 CL
 02-7517 R57 CL
 02-7520 R57 CL
 02-7377 R57 CL
 Anchorage

Assisted Living
 Aide
 02-7545 R9 CL
 02-7559 R9 CL
 02-7560 R9 CL
 Anchorage

Office Assistant II
 02-7403 R10 CL
 Anchorage

LPN
 02-7420 R17 CL
 02-7543 R17 CL
 02-7921 R17 CL
 02-7922 R17 CL
 02-7955 R17 CL
 06-6222 R17 CL
 Anchorage

LPN
 02-7415 R17 CL
 02-7547 R17 CL
 02-7576 R17 CL
 02-7577 R17 CL
 Anchorage

LPN
 02-7581 R17 CL
 02-7416 R17 CL
 02-7421 R17 CL
 02-7541 R17 CL
 02-7546 R17 CL
 06-6194 R17 CL
 06-6203 R17 CL
 Anchorage

Nurse II
 06-N09022 R19 CL
 Anchorage

Nurse II
 06-N09021 R17 CL
 Anchorage

Food Service
 Sub-Journey
 02-7471 R61 CL
 02-7473 R61 CL
 02-7493 R61 CL
 02-7495 R61 CL
 02-7515 R61 CL
 02-7521 R61 CL
 02-7522 R61 CL
 02-7523 R61 CL
 02-7524 R61 CL
 02-7525 R61 CL
 02-7526 R61 CL
 02-7527 R61 CL
 02-7530 R61 CL
 02-7531 R61 CL
 02-7532 R61 CL
 02-7536 R61 CL
 02-7537 R61 CL
 02-7567 R61 CL
 02-7568 R61 CL
 02-7569 R61 CL
 02-7376 R61 CL
 Anchorage

Pioneer Home
 Pharmacy
 Pharmacist
 06-X114 R27 EX
 Anchorage
 Supervised by
 AKPH Mgmt Staff

Medical Information/
 Services Assistant
 02-7597 R10 CL
 Anchorage

Certified Nurse Aide II
 02-7425 R11 CL
 Anchorage

Certified Nurse Aide II
 02-7435 R11 CL
 Anchorage

Certified Nurse Aide II
 02-7586 R11 CL
 02-7554 R11 CL
 Anchorage

Certified Nurse
 Aide I
 02-7405 R10 CL
 02-7422 R10 CL
 02-7443 R10 CL
 02-7456 R10 CL
 02-7551 R10 CL
 02-7553 R10 CL
 02-7555 R10 CL
 02-7588 R10 CL
 02-7590 R10 CL
 02-7591 R10 CL
 02-7919 R10 CL
 02-7956 R10 CL
 06-6120 R10 CL
 06-6161 R10 CL
 06-6200 R10 CL
 Anchorage

Certified Nurse
 Aide I
 06-N09020 R10 CL
 Anchorage

Food Service Sub-
 Journey
 06-N08002 R61 CL
 Anchorage

Pharmacist
 06-X113 R27 EX
 Anchorage

Office Assistant I
 02-7593 R8 CL
 Anchorage

Certified Nurse Aide I
 02-7411 R10 CL
 02-7428 R10 CL
 02-7429 R10 CL
 02-7437 R10 CL
 02-7439 R10 CL
 02-7470 R10 CL
 02-7487 R10 CL
 02-7496 R10 CL
 06-6079 R10 CL
 06-6129 R10 CL
 Anchorage

Certified Nurse Aide I
 02-7423 R10 CL
 02-7433 R10 CL
 02-7462 R10 CL
 02-7478 R10 CL
 02-7548 R10 CL
 02-7592 R10 CL
 02-7573 R10 CL
 Anchorage

Certified Nurse Aide I
 02-7424 R10 CL
 02-7431 R10 CL
 02-7455 R10 CL
 02-7464 R10 CL
 02-7477 R10 CL
 02-7486 R10 CL
 02-7488 R10 CL
 02-7549 R10 CL
 02-7556 R10 CL
 02-7582 R10 CL
 02-7589 R10 CL
 Anchorage

Certified Nurse
 Aide I
 02-7405 R10 CL
 02-7422 R10 CL
 02-7443 R10 CL
 02-7456 R10 CL
 02-7551 R10 CL
 02-7553 R10 CL
 02-7555 R10 CL
 02-7588 R10 CL
 02-7590 R10 CL
 02-7591 R10 CL
 02-7919 R10 CL
 02-7956 R10 CL
 06-6120 R10 CL
 06-6161 R10 CL
 06-6200 R10 CL
 Anchorage

Certified Nurse
 Aide I
 06-N09020 R10 CL
 Anchorage

Accounting
 Technician I
 02-7480 R12 CL
 Anchorage
 Supervised by AKPH
 Mgmt Staff

Certified Nurse
 Aide I
 02-7419 R10 CL
 02-7434 R10 CL
 02-7438 R10 CL
 02-7463 R10 CL
 02-7542 R10 CL
 02-7550 R10 CL
 02-7557 R10 CL
 02-7583 R10 CL
 02-7585 R10 CL
 02-7587 R10 CL
 02-7594 R10 CL
 02-7953 R10 CL
 06-6201 R10 CL
 Anchorage

Certified Nurse
 Aide I
 02-7427 R10 CL
 02-7436 R10 CL
 02-7452 R10 CL
 02-7467 R10 CL
 02-7484 R10 CL
 02-7499 R10 CL
 02-7552 R10 CL
 02-7579 R10 CL
 02-7584 R10 CL
 02-7924 R10 CL
 02-7925 R10 CL
 06-6207 R10 CL
 Anchorage

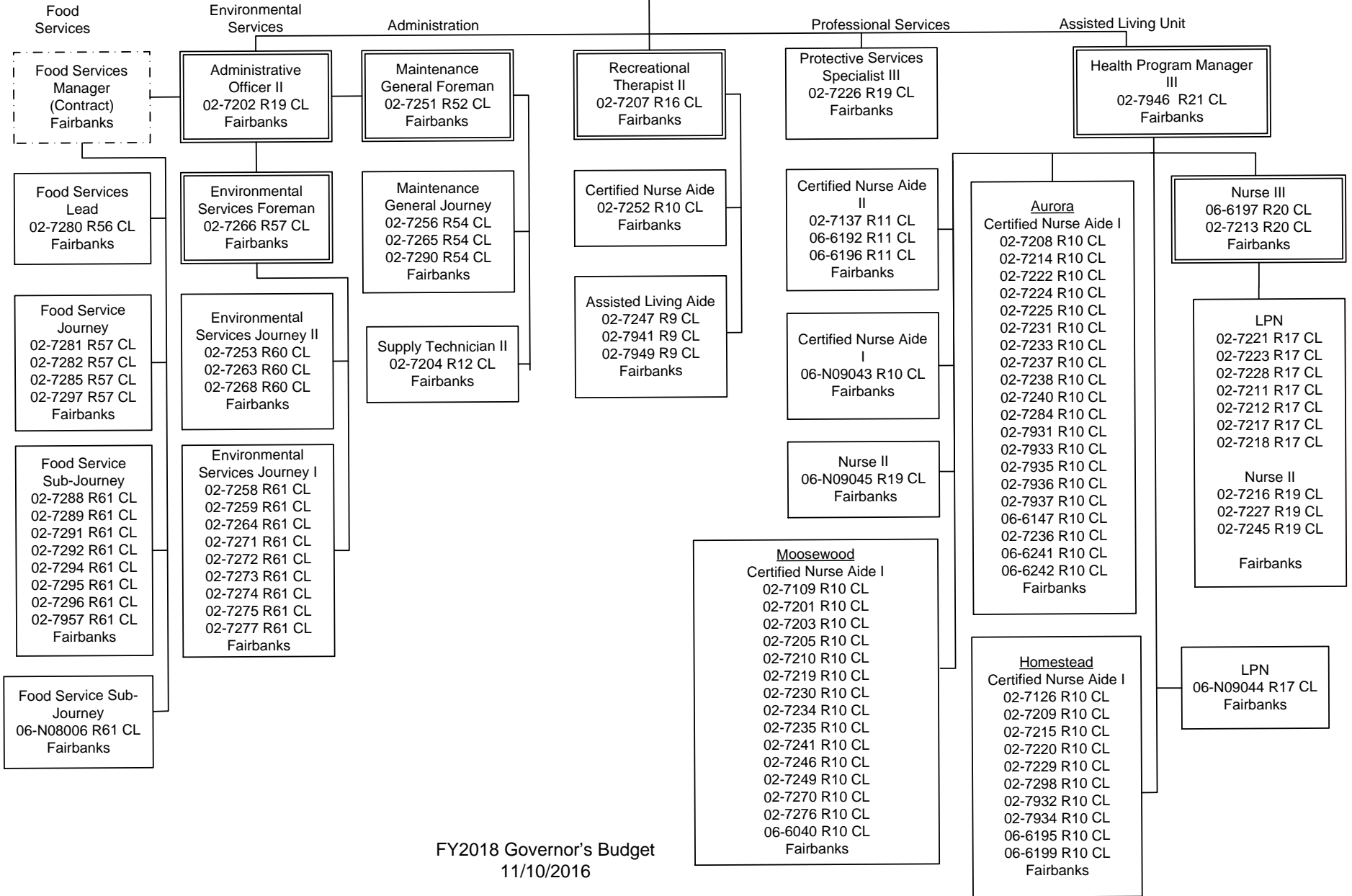
Certified Nurse
 Aide I
 02-7424 R10 CL
 02-7431 R10 CL
 02-7455 R10 CL
 02-7464 R10 CL
 02-7477 R10 CL
 02-7486 R10 CL
 02-7488 R10 CL
 02-7549 R10 CL
 02-7556 R10 CL
 02-7582 R10 CL
 02-7589 R10 CL
 Anchorage

Certified Nurse
 Aide I
 02-7405 R10 CL
 02-7422 R10 CL
 02-7443 R10 CL
 02-7456 R10 CL
 02-7551 R10 CL
 02-7553 R10 CL
 02-7555 R10 CL
 02-7588 R10 CL
 02-7590 R10 CL
 02-7591 R10 CL
 02-7919 R10 CL
 02-7956 R10 CL
 06-6120 R10 CL
 06-6161 R10 CL
 06-6200 R10 CL
 Anchorage

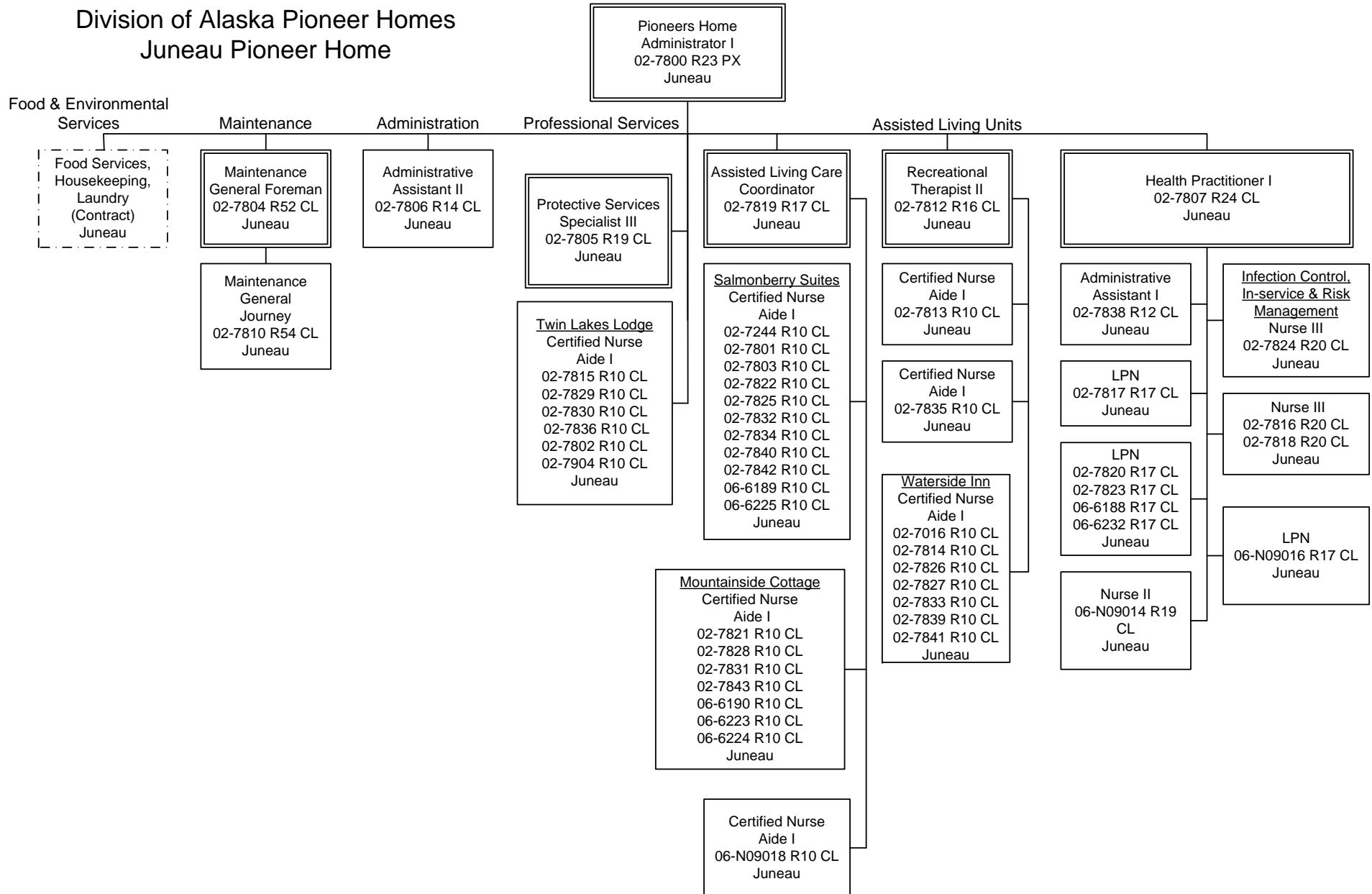
Certified Nurse
 Aide I
 06-N09020 R10 CL
 Anchorage

DHSS
Division of Alaska Pioneer Homes
Fairbanks Pioneer Home

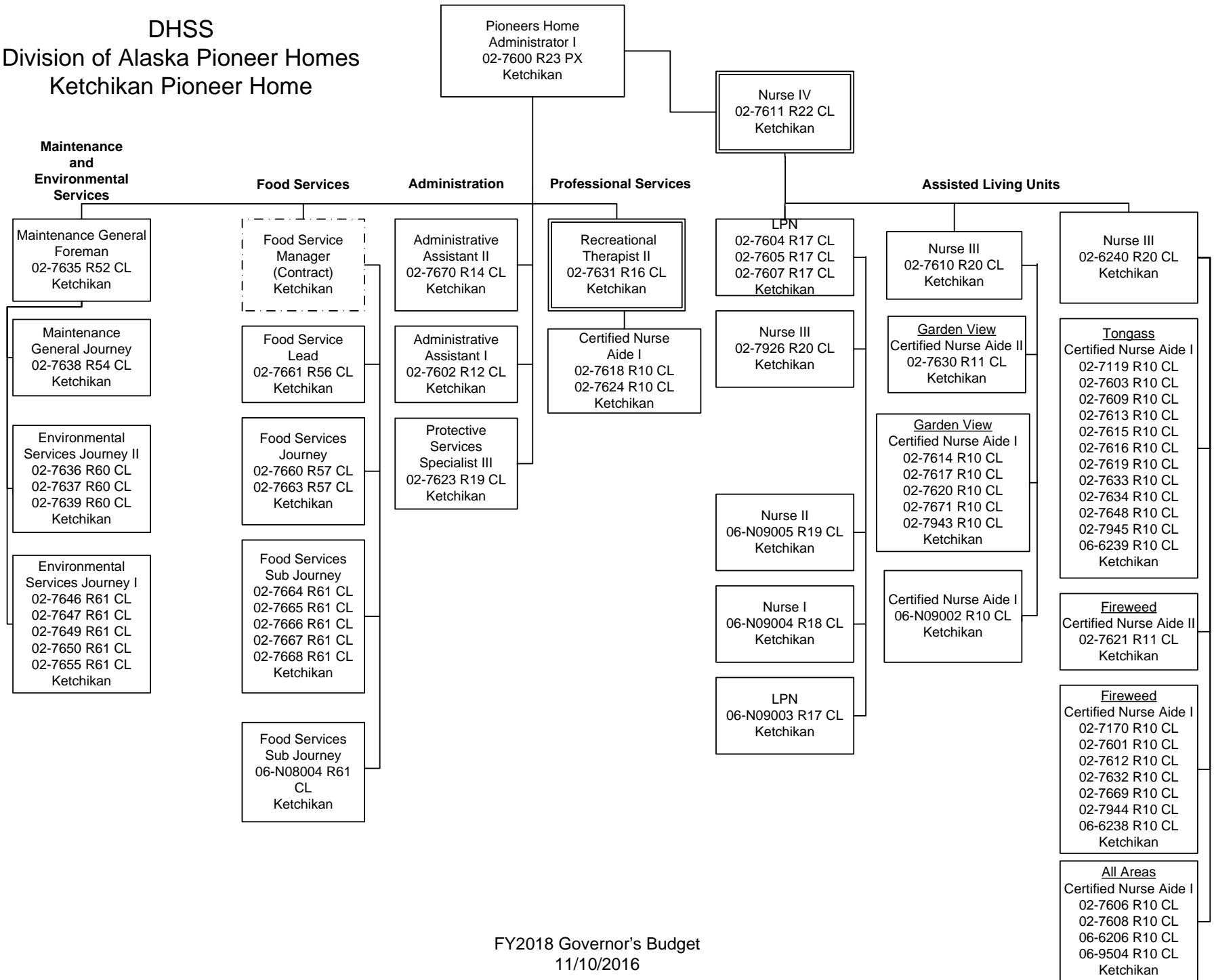
Pioneers' Home
 Administrator II
 02-7200 R24 PX
 Fairbanks



DHSS
Division of Alaska Pioneer Homes
Juneau Pioneer Home



DHSS
 Division of Alaska Pioneer Homes
 Ketchikan Pioneer Home



DHSS
 Division of Alaska Pioneer Homes
 Alaska Veterans and Pioneers Home in Palmer

Pioneers Home
 Administrator I
 02-7007 R23 PX
 Palmer

