

Department of Health and Social Services
RDU: Public Health (502)
Component: Nursing (288)
PFT: 158 PPT: 2

PHN Chief
06-1019
27 CL
Anchorage

Admin Asst II
06-1133
14 CL
Anchorage

Admin Officer II
06-1452
19 CL
Juneau

PHN Assist Chief
06-1020
26 CL
Juneau

PHN V
06-1117
25 CL
Wasilla (SC)

PHN V
06-1226
25 CL
Juneau (SE)

PHN V
06-1143
25 CL
Fairbanks (IR)

Office Asst II
06-1798
10 CL
Anchorage

Admin Asst II
06-1766
14 CL
Juneau

Nurse Consultant II
06-1680
24 CL
Fairbanks

Nurse Consultant II
06-1648
24 CL
Juneau

Nurse Consultant II
06-1134
24 CL
Anchorage

Nurse Consultant II
06-1756
24 CL
Anchorage

PH Informaticist II
06-1212
20 CL
Juneau

Nurse Consultant II
06-1676
24 CL
Anchorage

Office Asst II
06-1907
10 CL
Juneau

Nurse Consultant I
06-2023
22 CL
Anchorage

Health Program Associate
06-1373
16 CL
Anchorage

Office Asst II
06-1906
10 CL
Anchorage

FY2018 Governor Org Chart
Division of Public Health
Public Health Nursing
PFT: 16 PPT: 0

Department of Health and Social Services

RDU: Public Health (502)

Component: Nursing (288)

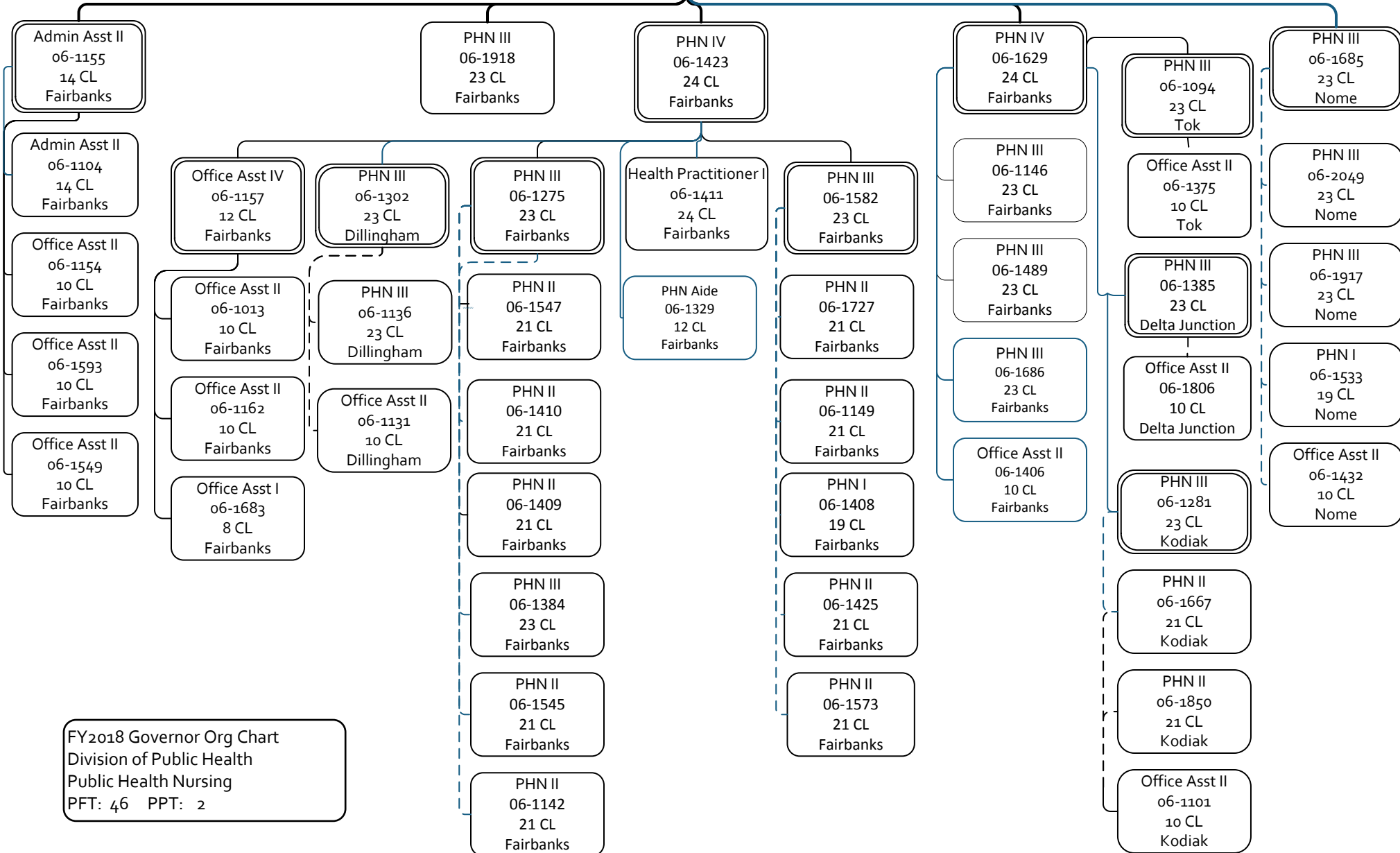
PFT: 158 PPT: 2

Public Health Nurse V

06-1143

25 CL

Fairbanks

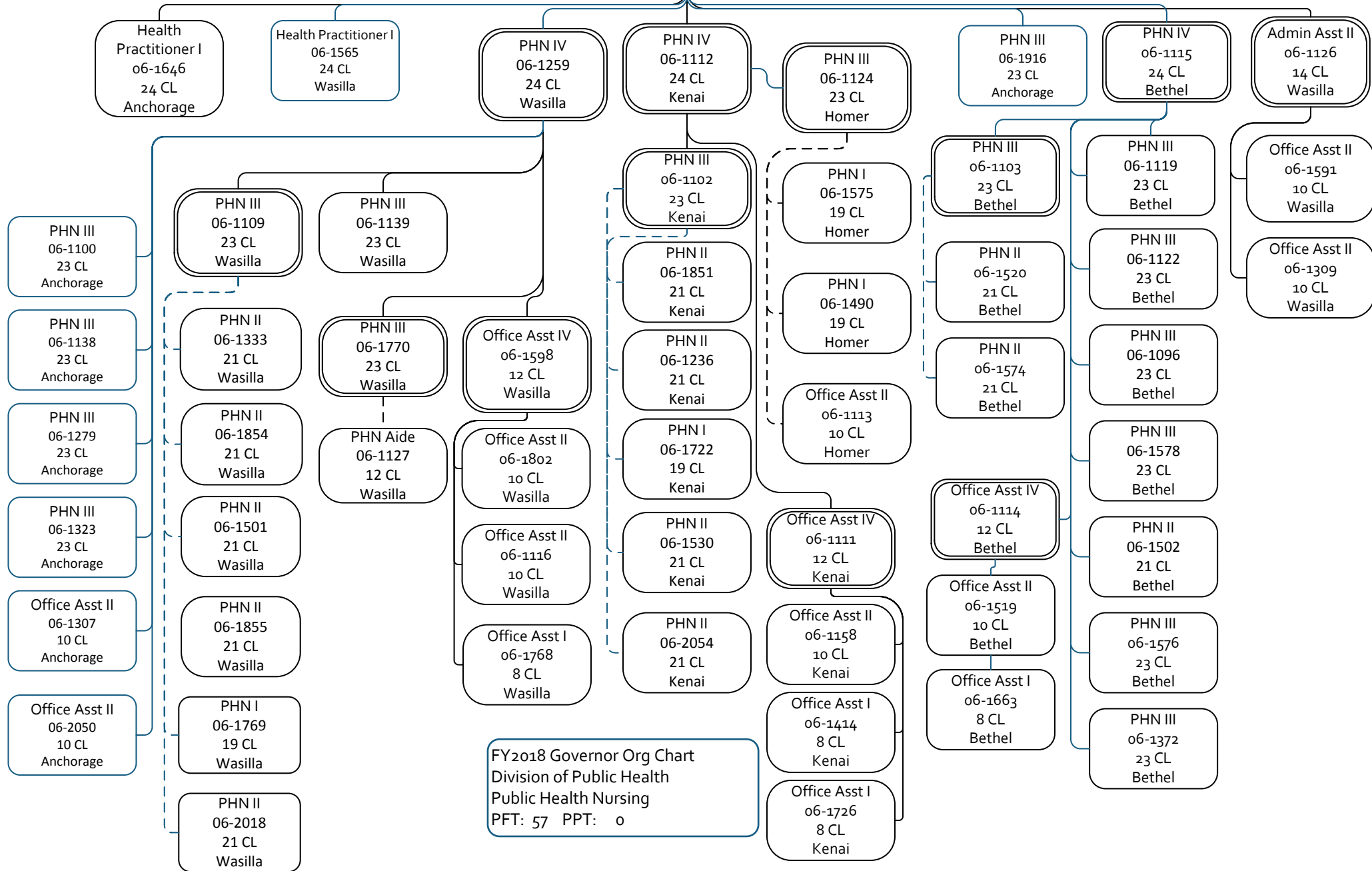


FY2018 Governor Org Chart
Division of Public Health
Public Health Nursing
PFT: 46 PPT: 2

Department of Health and Social Services

RDU: Public Health (502)
Component: Nursing (288)
PFT: 158 PPT: 2

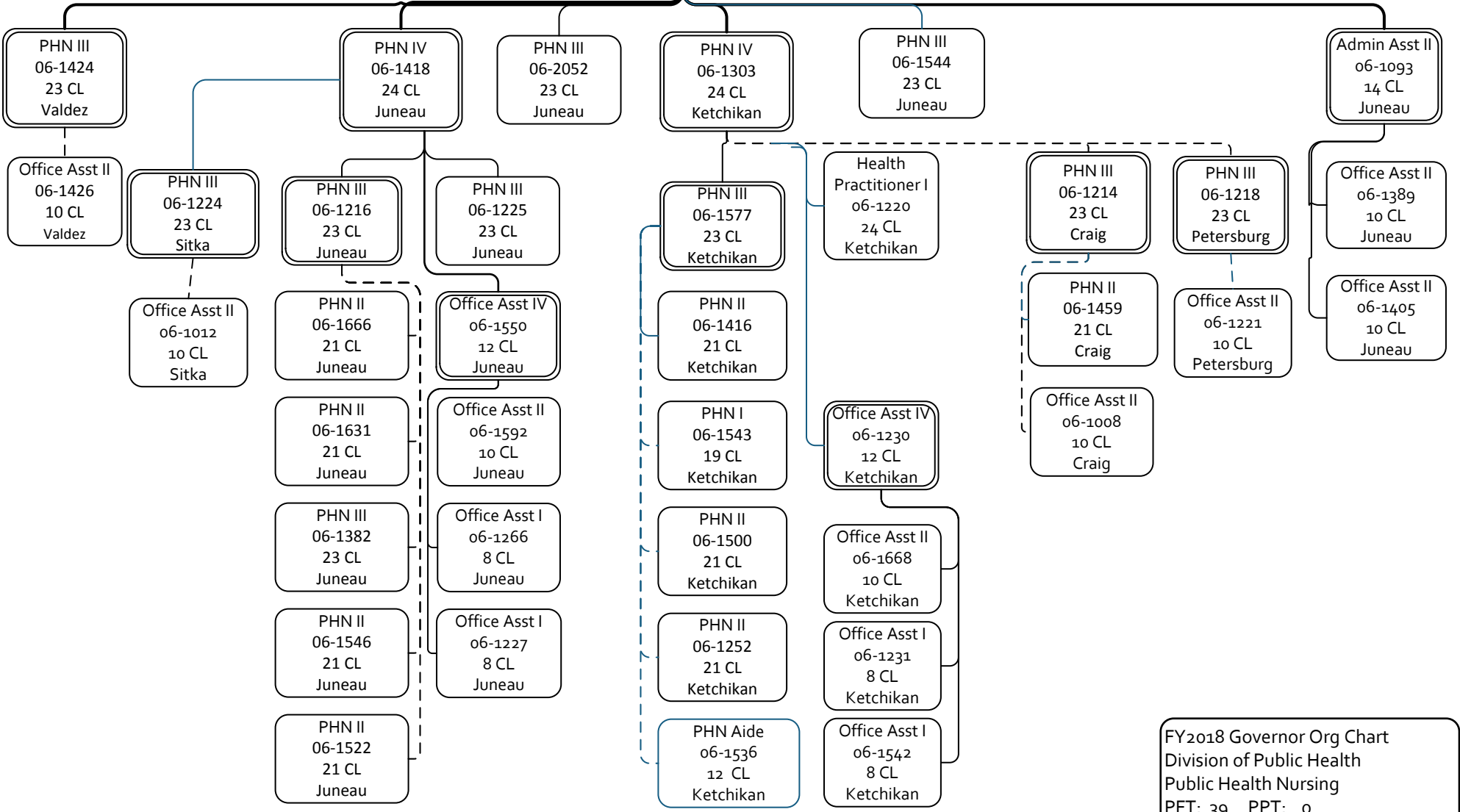
Public Health Nurse V
06-1117
25 CL
Wasilla



FY2018 Governor Org Chart
Division of Public Health
Public Health Nursing
PFT: 57 PPT: 0

Department of Health and Social Services
RDU: Public Health (502)
Component: Nursing (288)
PFT: 158 PPT: 2

Public Health Nurse V
06-1226
25 CL
Juneau



FY2018 Governor Org Chart
Division of Public Health
Public Health Nursing
PFT: 39 PPT: 0