

State of Alaska
FY2018 Governor's Operating Budget

Department of Public Safety
Alaska State Trooper Detachments
Component Budget Summary

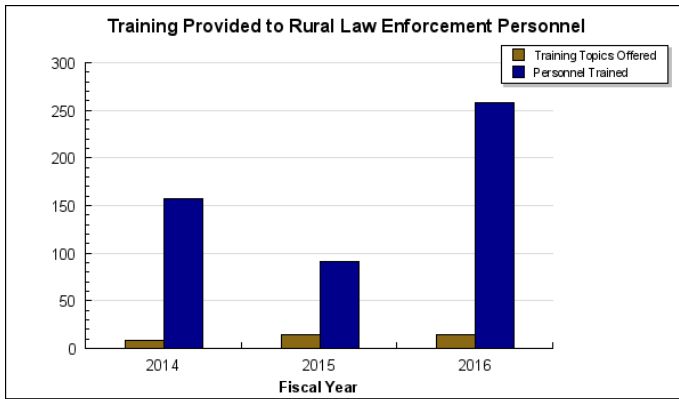
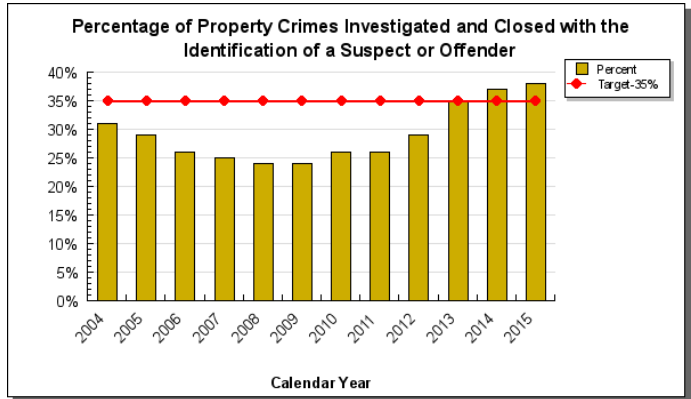
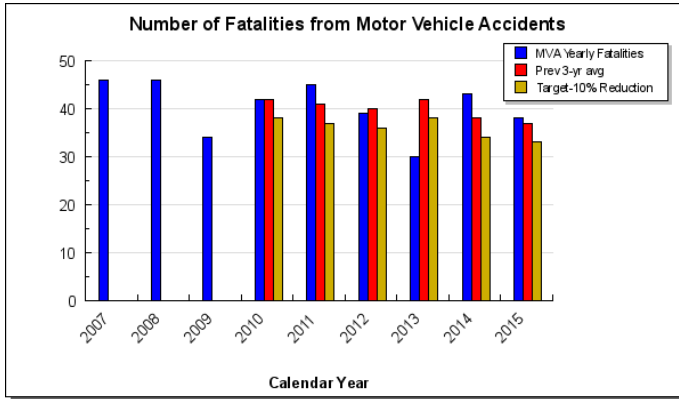
Component: Alaska State Trooper Detachments

Contribution to Department's Mission

Preserve public peace; protect life, property, and resources.

Results

(Additional performance information is available on the web at <https://omb.alaska.gov/results>.)



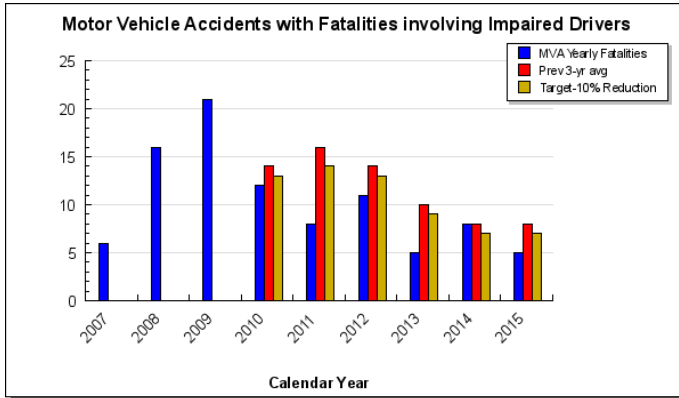
Core Services

- Highway safety.
- Preserve public peace.
- Provide rural law enforcement training.

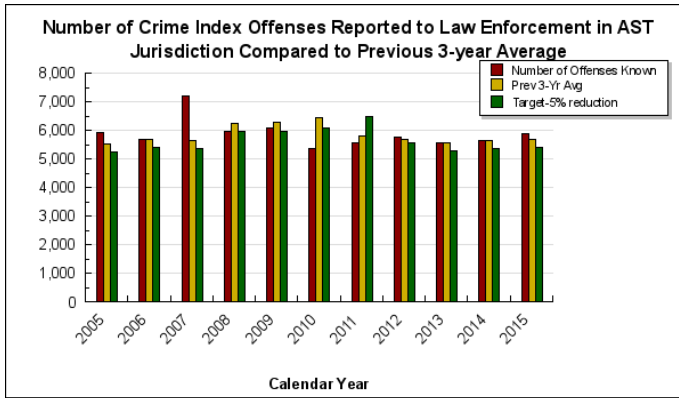
Measures by Core Service

(Additional performance information is available on the web at <https://omb.alaska.gov/results>.)

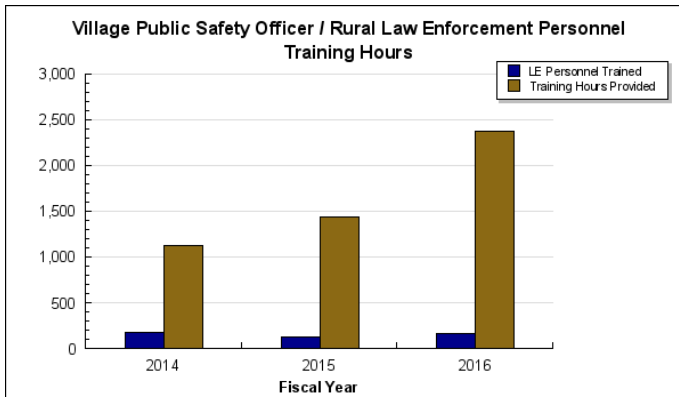
1. Highway safety.



2. Preserve public peace.



3. Provide rural law enforcement training.



Major Component Accomplishments in 2016

In FY2016, the Alaska State Troopers (AST) accomplished the following:

- Handled more than 114,933 calls for service within AST jurisdiction.
- Responded to more than 3,673 motor vehicle collisions.
- Responded to 467 search and rescue efforts.
- Solved 44 percent of the homicides that occurred within AST jurisdiction or for which AST was asked to

adopt the investigation from a borough, city, or municipality.

- Served or closed over 15,895 warrants.
- Served or closed over 14,116 writs.
- Served or closed over 1,923 Domestic Violence Orders.
- Refined the Traffic and Criminal Software (TraCS) application to incorporate additional functionality for all users statewide.
- Implemented integration of other agencies into the Alaska Records Management System (ARMS).
- Conducted crime scene investigation for rural law enforcement.
- Refined and enhanced the distance delivery program and expanded the curriculum for Rural Law Enforcement Training (RLET) personnel, adding additional courses.
- Completed two Alaska State Trooper Citizen Academies.
- Provided Field Training Officer training.
- Alaska Association of Chiefs of Police Executive Development seminar.
- K-9 quarterly training for both AST and multiple municipal police agencies.
- Drug Enforcement Administration (DEA) methamphetamine clandestine laboratory class.
- Advanced forensic investigative training.
- On-going recertification / training in firearms, baton, pepper spray, and other basic tools.

Recruitment: The Recruitment Unit has effectively allocated funds for advertising the unit's "hands on recruitment approach" resulting in 1,385 applicants during this fiscal year. Seven recruits reported to the academy in Sitka in FY2016. The Recruitment Unit also processed an additional 12 applications for State Trooper lateral hire positions. The unit also processed 182 applications for Court Service Officer (CSO) positions. Of those, four were hired. Background investigations were conducted on 14 Deputy Fire Marshall applicants with none being hired. The unit also performed required background investigations on two current Village Public Safety Officers (VPSO). These two were VPSO's who wished to be armed. Both were sent to the academy for additional training to become armed VPSOs.

The Recruitment Unit remains active with job fairs, advertising, follow-up with potential applicants, and updating the recruitment website to keep up with national standards and technological advancements. The Recruitment Unit attended 39 job fairs or events designed to increase recruitment of ASTs, Alaska Wildlife Troopers (AWT), CSOs and VPSOs. A recruitment initiative that began in 2016 and will continue in 2018 is the Candidate Assistance Mentoring Program, a.k.a. CAMP. CAMP is a mentoring program where the Recruitment Unit hosts an open house for prospective applicants who are interested in becoming an AST or AWT. This often occurs in conjunction with our written test. The main focus of CAMP is to answer questions and provide guidance to prospective applicants to better prepare them for the hiring process and background investigation. Recruitment initiatives will also include giving recruitment presentations in any number of venues with an emphasis on hiring Alaskans. The Recruitment Unit will continue to increase efforts of recruitment with the military both in Alaska and the lower 48, rural Alaska, and colleges and universities. AST continues to evaluate its recruiting practices and will be dedicating more efforts to focused, targeted recruitment of potential applicants who are highly qualified.

Special Events: During the past year, all detachments have conducted special patrol activities. Those activities included Special annual events such as the Alaska State Fair in Palmer, the Girdwood area Forest Fair and Spring Carnival/Slush Cup, Mount Marathon race in Seward, Valley Polar Plunge, the Iron Dog start, the Iditarod restart, the Arctic Man snow machine races near Paxson, Memorial Day events, the Deltana Fair, the Anderson Blue Grass Festival, the Tanana Valley Fair, and the Ninilchik Fair. In addition to these special events, Alaska Bureau of Highway Patrol members conducted dedicated patrols throughout the state in Department of Transportation (DOT) construction zones and designated highway safety corridors.

The Alaska State Troopers also partnered with several municipal police departments for multi-jurisdictional patrols over the holidays to improve highway safety, and shifted resources to reduce vehicle related incidents on the surface transportation system when popular personal use and sport fisheries were opened and traffic flow increased.

Key Component Challenges

Core Police Services: As Alaska's population continues to grow, requests for services in many core areas have increased. Alcohol and drug involvement in crime remains a significant challenge. Technological changes and sophistication allow new criminal exploitations of the populace, including identity theft, child pornography and online

child sexual exploitation, and computer fraud schemes. Terroristic threats to infrastructure require greater patrols, more response planning, and more efforts aimed toward public reassurance. The complexity of calls for service and the commensurate time involved in current requirements for documentation and reporting of events has resulted in AST becoming a very reactive organization. For most of the commissioned personnel assigned to AST, proactive enforcement such as highway traffic patrols, burglary suppression, and community policing have been forced to a lower priority as personnel respond from one call for service to the next, day in and day out. This trend is expected to continue into FY2016 with areas such as proactive traffic enforcement being further negatively impacted due to the elimination of the majority of commissioned personnel assigned to the Alaska Bureau of Highway Patrol. The contrast between the actual capabilities and resources of the Alaska State Troopers (AST) and the beliefs and expectations of the public requires significant staff time dedicated to explanation in a myriad of forums. AST's technology base continues to lag far behind other police and public service organizations in all these areas. One example of this is the ancient in-car video technology that AST is currently using. Although AST was allowed to re-appropriate some CIP funds in FY2016 to partially address this issue, there will continue to be both technical and funding challenges in implementing a more widespread utilization of new in-car video technology. AST personnel do not have body worn camera capabilities and these evidence capturing technologies are an expectation of today's general public. Systems of this sort require immense resources to store, retrieve, edit and distribute information which is requested for evidentiary or public records request purposes. Another example of this is the significant lag in connectivity speeds that AST personnel experience in many of our rural areas. This results in tremendous challenges for personnel who are entering necessary information into police reports (ARMS) and related databases.

AST continues to refine the merger of data between the Alaska Public Safety Information Network (APSIN) and the new Alaska Records Management system (ARMS). As the case activity is transitioned from one system to the other, there have been some identified hurdles in clearly capturing all of the enforcement activity and subsequently reporting it in the same format as in prior years. AST expects to continue to see some deviation in reportable activity with some downward trends not accurately reflecting the current levels of true calls for service and responses. FY2014 and FY2015 saw some improvement in this merged data, but there are still challenges in mining the data to create accurate reports depicting a true picture of AST activity. AST anticipates that this will continue at least into FY2016 as more is learned about ARMS and its available reporting structures.

Recruitment: The number of applicants for AST and Alaska Wildlife Troopers (AWT) over the past year is a little less than last year's. A significant percentage of the applicants are attributable to the recruiting efforts done by working AST and AWT personnel, re-runs of the National Geographic series on the Alaska State Troopers, as well as our website and Facebook page. However, recruitment and retention continue to be a significant challenge for AST and law enforcement agencies nation-wide. Although the recruitment unit has been successful attracting applicants, attracting *quality* applicants is especially challenging when competing with other agencies in and out of Alaska. The requirement that troopers be willing to transfer to rural locations where housing and amenities are limited creates recruiting challenges for AST that are not faced by other police agencies in the state.

Court Security: The number of court services officers (CSO) located around the state has remained consistent in recent years. This number is still marginally adequate to properly handle increased court security concerns, transport prisoners, and serve domestic violence protective orders, stalking, and other court writs in a timely manner. Additionally, AST is being asked to provide security at court events such as the annual Judicial Conference and Supreme Court Live events. Supreme Court Live is an event where the state supreme court hears oral arguments on actual cases at a high school. Depending on the venue and the number of students attending the event, providing security for the event and screening of the students and public requires twelve to twenty officers. The number of prisoner transports decreased in FY2016 by 11 percent. Between FY2015 and FY2016, the number of prisoner moves decreased from 89,097 to 79,207.

Rape and Domestic Violence: Alaska's rate of forcible rape is three times the national average. Rates of domestic violence are among the highest in the nation. The rates of victimization of Alaska Native women and children, particularly in rural Alaska, are even greater. Small communities and villages present specific and difficult challenges to these investigations.

Terrorism, Criminal Intelligence, and Weapons of Mass Destruction: The Alaska State Troopers continue to staff and supervise the Alaska Criminal Information and Analysis Center (AKIAC) which constitutes the Criminal Intelligence Unit (CIU), AST criminal analysts, Task Force Officers from the Anchorage Police Department, Department of Revenue CIU, Federal Bureau of Investigation (FBI), Department of Homeland Security (DHS), Bureau of Alcohol,

Tobacco and Firearms (BATFE) and the Alaska National Guard Counterdrug Support team. AKIAC is now located at DPS Headquarters and maintains a state owned secure facility to allow DPS and other state partners to actively monitor and track classified information and intelligence specific to threats to Alaska. AKIAC receives requests for service from DPS/AST assets, local police departments, local and national FBI offices, other federal LE offices, other State law enforcement, and other state and local law enforcement agencies around the US. In FY2016, AKIAC completed 3,785 requests for information, intelligence, or assistance from state, local and federal public safety officials in Alaska. This represents a 23 percent increase in requests from FY2015 (2,953). Of that total, 75 percent of the requests were from state and local law enforcement, 19 percent were requests from federal agencies, and 6 percent were from other state and local law enforcement agencies in the US. Additionally, AKIAC contributes to the state's cyber security efforts by working with the state security office (SSO) in analyzing and mitigating cyber events against the SOA network. Further, AST remains actively involved in contingency planning and preparedness issues in concert with other government agencies, as well as with private industry. Finally, AST maintains close ties to oil and gas industry security entities through information sharing and classified security briefs as there are no Alaska State Trooper posts along almost 400 miles of the Trans-Alaska Pipeline (from Prudhoe Bay to Fairbanks).

DETACHMENT CHALLENGES –

“A” Detachment (Southeast Alaska) – In a continuing trend, socioeconomic opportunities within “A” Detachment’s area have grown as have the requirements on Trooper resources. Tourism continues to increase with over one million cruise ship passengers expected to visit southeast Alaska ports and communities throughout the upcoming year. The influx of these visitors to the Southeast area along with new industrial development and expansion will further tax the available AST resources in this region due to the anticipated increased calls for service.

“A” Detachment’s authorized DPS commissioned staffing level has remained essentially status quo over the past several fiscal years, with only minor deviations. “A” Detachment’s authorized Village Public Safety Officer (VPSO) staffing level increased from seven to eight, but only four of those positions are currently filled and the vacancies have been prolonged.

During the past year, the primary challenge was, and continues to be, providing the best possible professional level of public safety service. This is true for urban communities with higher population concentrations as well as communities in more remote locations with less population concentrations that constitute a majority of the communities within “A” detachment. The negative impact on these efforts is exacerbated by the current budget climate which necessitates a reduction in village visits by assigned troopers.

Ketchikan AST is currently fully staffed, but during the busy summer months continues to have challenges meeting the volume of calls for service and additional dispatch related duties with the assigned level of staffing. In addition, the “A” Detachment dispatch center took on duties from “C” Detachment and now provides dispatch services for the Dillingham area. This encompasses dispatch duties for on call and emergencies beginning at 16:30 to 08:00 hours or until a clerk comes in the office as well as assuming those duties for the day if there is not a clerk available.

The detachment area has several AWT vessels and two AWT small aircraft in the region. These are utilized in cooperation with AWT personnel for response purposes. When DPS planes or watercraft are unavailable, chartering commercial aircraft, taking the ferry, or not responding directly are the only options. Personnel are restricted to the timing and routes charter operators dictate. Similar to Western Alaska, this can be problematic when there is a need to respond quickly to investigate crimes. Air travel, whether scheduled or chartered, is expensive, limiting the number of routine visits made to each village.

Transportation costs, lodging, and man hours consume travel budgets. There are over a dozen villages in “A” Detachment. A majority of the communities within the detachment require paying for transportation beyond the costs of vehicles assigned to individual troopers. This type of travel consumes time that cannot be allocated towards tangible one-on-one service to the public. Often the detachment incurs lodging costs for overnight visits and unexpected weather condition delays.

Radio and cell towers are few and communication is extremely limited in “A” Detachment’s remote communities and locations. Sometimes the only viable method of communication is by satellite phones which are inherently unreliable in Southeast Alaska. The unreliable communications capability creates impediments to law enforcement and AST’s ability to provide efficient and effective public safety services. This is a consistent issue in many of the remote

locations that AST provides services to, statewide.

The number of search and rescue (SAR) missions increased from the previous year. SAR's for the last several years have continued on an upward trend due in part to increased numbers in visiting tourists. SAR incidents can be tragic producing high profile headlines, often involving aircraft crashes participating in commercial activities. Incidents such as this have the potential to draw a great deal of scrutiny to training, capabilities, and overall response and can become very high profile and are by their nature an unexpected cost.

The pending construction of a new road system in the Ketchikan region will likely have some impact on "A" Detachment resources. The road will connect the Harriet Hunt Lake and Shelter Cove areas, increasing the current island highway miles by nearly 50 percent. It will also open access to numerous miles of U.S. Forest Service and various logging roads. Patrol of these roadways will be the responsibility of the Ketchikan State Trooper Post.

Similar to other detachments, the increase in heroin trafficking will have influence on large and small communities. It often has the tendency to become a driving force behind increased property crimes.

"B" Detachment (Mat-Su Region) – "B" Detachment provides public safety services to approximately 111,000, permanent residents within its boundaries. Of the 111,000 residents, AST have primary law enforcement responsibility for approximately 89,000 full-time residents. In addition to full-time residents, countless tourists and residents from other regions of Alaska routinely travel in and out of "B" Detachment's boundaries for recreation and work throughout the year. Although the area serviced by "B" Detachment is not the largest in square miles, it services a higher population density than the other detachments. The Matanuska Susitna Borough is now the second most populated area in the state, after Anchorage. The Matanuska Susitna Borough accounts for about 47 percent of the area encompassed by "B" Detachment's boundaries. As of this time, the population of the Matsu Borough is estimated to be over 103,000 residents and it is one of the fastest growing areas in the state, with a projected growth rate between 3 percent and 4.3 percent annually. "B" Detachment supports four correctional centers located within its boundaries: Goose Creek Correctional Center; Point Mackenzie Correctional Farm, Palmer Correctional Center; and Mat-Su Pretrial Facility, with a cumulative prisoner population making up 38 percent of the adult prison population statewide residing in correctional centers. As of October, 2016, all prisoner housed at Palmer Correctional Center have been rehoused within the three other facilities to facilitate the closure of Palmer Correctional Center. This does not take into consideration juvenile populations housed at the Mat-Su Youth Facility administered by the Division of Juvenile Justice.

The detachment averages approximately 80 calls for service per day. "B" Detachment continues to field a significantly high number of calls for service. "B" Detachment borders the Municipality of Anchorage and due to the close proximity, many Alaska residents and non-residents commute to, from, and through "B" Detachment communities. The Alaska State Troopers conduct enforcement efforts on these major roadways, responding to hundreds of reported dangerous drivers (impaired drivers, reckless drivers, negligent drivers, etc.), and handling a yearly average over 1,600 vehicle collisions, as well as assisting stranded motorists.

"B" Detachment continues to field one of the highest numbers of property related crimes. The Criminal Suppression Unit was developed January 1, 2014 to combat property crimes. The unit was so successful they were recognized by Governor Bill Walker who presented them with the Governor's Peak Performance award for 2015. In their first year, the unit directly investigated 87 property related incidents with only six yet to be resolved. In the unit's first year, they recovered \$300,500.00 worth of stolen property, 44 firearms, 12 ATV/Snow machines, and five vehicles. During their second year, the unit directly investigated 58 property crimes and assisted with numerous others. The unit is performing with a 92 percent success rate for solving their investigations, leading to over \$310,000 worth of property being recovered.

Overtime use continues to be high throughout the year due to the ongoing demands placed on personnel for responses to incidents as well as the required follow-up in many cases. State troopers continue to work many of their regular days off and holidays as well as having to work extended duty days to meet the demands of the job. "B" Detachment troopers are continually faced with prioritizing calls for service leaving little time for proactive law enforcement patrols. Should additional budget reductions result in the further loss of PCNs, the ability to conduct proactive enforcement will suffer further and the response to calls for service will need to be re-evaluated as public expectation does not coincide with AST's ability to provide the level of services desired in some instances.

On May 31, 2015, Talkeetna Post was closed. The staff previously assigned to Talkeetna Post was reassigned to Palmer Patrol and were housed in the Matsu West office. Although the post was closed, "B" Detachment continues to provide quality service by assigning at least one trooper to the area on each shift.

Over the past two years, "B" Detachment has taken steps to educate its members and other first responder agencies in Mental Health First Aid through the development of the Crisis Intervention Coalition. Through state and local partnerships, continued education and training will be developed in the areas of Crisis Intervention with an emphasis on working with the community to use resources outside the criminal justice system.

"C" Detachment (Western Alaska) – The largest geographical detachment within the Division of Alaska State Troopers, its population is liberally scattered throughout an area larger than the state of California. "C" Detachment covers Western Alaska, the Aleutian Chain, and the Kodiak Island archipelago, all of which is considered off the road system, meaning traveling to communities from an urban center is only possible by aircraft in all seasons and by watercraft or other off road craft such as four wheelers or snow machines, depending on weather conditions. Troopers are required to travel by these alternative methods during routine patrol and for emergency response. The emergency response times for a trooper to reach a scene in a Western Alaska community can range from several minutes to hours or even days depending on the location and the weather. These challenges are combined with minimal staffing in some cases along with issues such as telecommunications, radios, and poor internet connectivity that create additional hardships for the troopers and ultimately negatively affect their ability to accomplish the mission of the department.

Continued advancement in the investigation of serious crimes including sexual assault and sexual abuse of minors are being made with the expansion, cooperation, and coordination of the Sexual Assault Response Team (SART) concept and the creation of Child Advocacy Centers (CAC's) within the detachment. This coupled with the significant effort to provide training to troopers transferring to Western Alaska has further provided for the investigation of serious personal crimes in rural communities. The SART concept within rural Alaska is still experiencing difficulties in select communities providing and maintaining professional staff to meet the needs of the program. To address this ongoing challenge the department has created a unit in the Yukon-Kuskokwim Delta to address the need for the investigation of significant person crimes to include Homicides and sexual offenses. The Violent Offenders Unit was created in FY2016 and has taken on 40 percent of the Sexual Assaults and Sexual Abuse of a Minor investigations for the Yukon-Kuskokwim Delta. This model has shown to improve the relationships with the other agencies in the region along with the families and advocacy providers by having these providers and families work with specific troopers who are able to focus on these types of investigations.

The continued creation or conversion of trooper posts which use the alternate two week on, two week off concept, such as the most recent one in Aniak, has provided additional trooper coverage and reduced response times in the furthest reaches of rural Alaska at a cost savings to the department. One example of this is the Sergeant position in St. Mary's and Bethel. Additional posts of this type would further spread the significant workload in western Alaska.

"C" Detachment continues to struggle to maintain the day to day administrative functions due to limited staffing and frequent turnover of personnel in administrative support positions. The constant change in personnel has created negative impacts on important tasks such as property and data entry into the Alaska Public Safety Information Network, Alaska Record Management System and the National Criminal Information Center database. The need for additional administrative personnel is critical in rural posts, several of which do not have an administrative person to support the troopers and VPSOs. Efforts to share staffing with other departments have been undertaken with positive results.

AST has made gains in acquiring housing and facilities for Troopers working in rural communities across Western Alaska. Some areas of the detachment still have facilities which need to be replaced and others that need to be evaluated for potential replacement or updating as funding allows. The Aniak Post is in need of total replacement due to an airport project which will destroy half the building. The buildings condition requires replacement as opposed to relocation due to health concerns and structural deficiencies.

"C" Detachment continues to lead the state in the number of reported violent crimes. These numbers have increased in part because of the improved ability for community members to report incidents. Cell phone technology continues to expand into rural Alaska allowing for a majority of the citizens to use cell phones to call and report crime and

request assistance. This technology links rural Alaska together in a much more comprehensive manner than in the past. Although this is positive in that it provides the public with significantly greater access to law enforcement, it stresses law enforcement's ability to screen and prioritize calls for service given limited resources. To address this "C" Detachment has utilized the dispatch centers in Ketchikan and Fairbanks to provide professional dispatchers to answer after-hours calls and initiate incident information for all Detachment Posts. This has improved the documentation of calls for service and response to citizens' request for assistance.

"C" Detachment which has the highest proportion of sexual assault and sexual abuse of a minor for the entire state per capita will continue to focus on increased response to violent crimes in FY2018. The number of VPSOs in the program, as well as the number of communities they are assigned to, has had a direct impact on public safety. The presence of a VPSO has been shown to decrease the severity of serious injury to victims in those communities that have a VPSO. Additional outreach, coordinated primarily through the VPSO program, is being made to provide education through the Alaska Youth Academy, Law Enforcement Cadet Corps, and the Citizens' Academy. The arming of VPSO's has created a need for additional training and oversight from the existing troopers in Western Alaska.

"C" Detachment has a significant number of search and rescue cases every year. These numbers highlight the need for more options to support these efforts in Western Alaska. There continues to be a need for additional fixed wing aircraft, helicopters, and civilian pilots, due to the decreased availability of vendors to provide services to the department in rural areas. These resources have and continue to be used to respond to significant aircraft incidents throughout Western Alaska where time is of the essence for preservation of life and limb.

"D" Detachment (Fairbanks Region) – "D" Detachment hosts a patrol unit dedicated to responding to calls for service in a relatively large quasi-urban environment. Due to the large call volume, and the relatively small number of troopers available to work patrol at the Fairbanks Post, troopers carry a large case-load and do not have adequate time to devote to pursue complex investigations. Additionally, Fairbanks Post is one of the locations where new troopers are trained. This dynamic makes it difficult to respond to calls for service, conduct investigations, and also adequately supervise and train new trooper recruits. New troopers are trained in Fairbanks and often transfer to rural assignments as new troopers are trained to replace them. This cycle often causes significant fluctuations in staffing. Specific areas where staffing issues are adversely impacting the public and the troopers in "D" Detachment are property crime investigations and rural law enforcement/ support for the Village Public Safety Officer Program.

The Fairbanks post is home to one of two trooper dispatch centers. The Fairbanks dispatch center employs 22 dispatch personnel. This center not only provides services to "D" Detachment but also dispatches for Kodiak AST and handles all after hours telephone calls for the lower Yukon Delta and Kotzebue. Similar to Troopers, Dispatchers require a long time to recruit and train. As a result the Fairbanks Dispatch Center has suffered significant shortages because of resignations.

"D" Detachment also has one of the three Special Emergency Reaction Teams. This team is responsible to respond to high risk events such as barricaded subjects, shooting events, hostage situations and other events that would require special training or equipment. This team, like the other two, can be called upon to provide support in a statewide capacity when necessary.

Being the largest geographic detachment, "D" Detachment is responsible for conducting numerous search and rescue operations throughout interior Alaska. As a result of budget "D" Detachment lost the use of an A Star helicopter which was used facilitate these rescues. This helicopter has recently been relocated to Anchorage due to budgetary issues but is scheduled to return to Fairbanks in January 2017. Routine and specific rural travel has also been hampered because of the loss of the Detachments Cessna 208 Caravan. This aircraft was temporarily loaned to "C" Detachment while their aircraft was in maintenance for approximately 9 months.

Currently, all reported property crime investigations within "D" Detachment are conducted by troopers from the uniformed patrol unit with some assistance provided by members of the Alaska Bureau of Investigation (ABI) and the Statewide Drug Enforcement Unit (SDEU) on a limited and case-by-case basis. Uniformed patrol troopers are primarily tasked with responding to crimes in progress and as a result do not have the necessary time to devote to burglary and property crime investigations without incurring significant amounts of overtime or falling further behind with the other investigations they are assigned. Even if the overtime were available, there are competing interests in the necessity for basic shift coverage that would preclude dedicating large numbers of personnel to these

investigations.

“D” Detachment created a Special Projects Unit (SPU) to respond to burglaries, thefts and assist with community oriented training and programs. This unit was comprised of 1 Sergeant and 2 Troopers. This unit made an initial impact on burglaries and thefts but as a result of Trooper reassignments and vacancies within the Detachment one position has been vacant. As a result of the vacancies in the patrol unit and Tok post the SPU has been required to backfill staffing needs.

“D” Detachment has started 2 separate community outreach programs during 2016. “D” Detachment has partnered with the California Highway Patrol to bring “Impact Teen Driving” to Interior Alaska. This program is designed to target the number one issue killing teens in America. This program was enabled by partnerships with the Public Safety Employees Association who funded the training and private donations which purchased supplies. The second program is a partnership with Project Lifesaver. This program allows special needs individuals, autistic and Alzheimer’s patients to be tracked through the use of FM transmitters. The initial equipment and training was funded out of “D” Detachment budget but the transmitters have been purchased through private donations. These two programs were showcased at a Trooper open house held in September 2016.

Currently a sergeant, a civilian pilot (filled Dec. 2016), three troopers and a VPSO are located in Fairbanks as part of the “D” Detachment Rural Unit and are tasked with responding to calls for service from several Interior villages as well as with providing oversight, training, and support to the VPSO working in the region. The growth in the availability of the internet and cell phone services, and the presence of VPSOs in communities, has resulted in more crimes being reported and the need for Rural Unit troopers to travel to more communities. Responding to the increased calls for service and support for the VPSO program remains a high priority of the detachment.

“E” Detachment (Anchorage / Kenai Region) – “E” Detachment consists of the entire Kenai Peninsula and the west side of Cook Inlet (Tyonek and Beluga) with Soldotna being the headquarters. The detachment’s northern area of responsibility reaches as far north as Eagle River for search and rescue incidents. The Kenai Peninsula continues to be a preferred recreational destination for many of Alaska’s residents during both the summer and winter. “E” Detachment has established post locations in Seward, Cooper Landing, Soldotna and Anchor Point.

The Division of AST kept a presence in Girdwood until October 1, 2016. Currently three troopers are based in Anchorage to provide a traffic enforcement presence along the Seward Highway, which has a high number of serious injury and fatality crashes along with very heavy seasonal use traffic during the summer months. The community of Girdwood has a lease in place with the Whittier Police Department to provide primary law enforcement services in that area.

The post previously located in Crown Point was relocated to the Seward area due to their lease expiring. The Cooper Landing staffing has been reduced from two troopers to one along with a reduction in state housing units to one. The Seward and Cooper Landing troopers now cover all calls for service in AST service areas from Lowell Point in Seward north to McHugh Creek (MP113 Seward Highway) including the Hope Highway and Portage Highway and the village of Chenega Bay.

Maintaining a viable trooper presence in the outlying areas has been a challenge due to staffing levels. Calls for service in the Girdwood area require a response from Seward based troopers who are often 90 miles away and have to travel through Turnagain Pass for response. Another example of this challenge is the Anchor Point Post which covers East End Road to Kachemak Selo north to MP 121 of the Sterling Highway, but also services Halibut Cove, Seldovia, Nanwalek and Port Graham with one sergeant and four troopers.

The staffing levels within “E” Detachment are challenging with both commissioned and civilian staff. The Soldotna Post is one of three training posts for the division. On average, approximately 75 percent of the assigned troopers have less than five years of experience, so the leadership roles fall to more tenured troopers who also serve as field training officers. As a training post, this puts a heavy strain on the staff. Turnover is fairly high, partly due to the fact that as troopers reach the point in their experience level and knowledge to become fully contributing assets, they transfer to other locations/units. Soldotna based troopers spend much of their patrol time going from call to call, which leaves very little time for adequate investigations.

Troopers are also responding to a greater number of Report Every Dangerous Driver Immediately (REDDI) complaints, as well as false alarms from local businesses and residences. The number of REDDI reports in calendar year 2015 was 3,327 of the 17,987 total calls for service handled by the detachment.

The civilian staffing in the Soldotna Public Safety Communications Center (SPSCC) has also been challenging. The SPSCC is a multi-agency staffed facility that dispatches a variety of fire, emergency medical and law enforcement entities on the Kenai Peninsula. Of the 20.5 employees that staff SPSCC, the Kenai Peninsula Borough (KPB) employs 11.5 and 9 are employed by the state. Newly hired dispatchers participate in a training program that takes six to eight months to complete. This year the center has been operating under a Memorandum of Agreement between DPS and KPB, which was established December 2013, and provides for better organizational structure. The number of 911 calls the center answered in calendar year 2015 was 24,662.

AST Director's Office – The Division of Alaska State Troopers Director's Office continues to work through and implement a comprehensive strategic planning process that will guide agency efforts and priorities for the near future. The objective is to implement a process that will enable AST to transition from being static to a more progressive method of conducting AST's operations. AST will continue to implement the advancement of technology initiatives as well as to assess and realign its existing resources to maximize its ability to be efficient and yet provide a positive impact to providing service to Alaska. AST intends to continue efforts to provide greater follow-up on major crimes as well as applying resources to further lower the rates of sexual assaults and sex abuse of minors in Alaska. AST will further efforts to maximize effectiveness and improve responses to calls for service. Highway safety continues to be a high priority for AST and additional efforts will be expended to secure grant funding to allow for proactive patrols which are conducted solely on overtime by regularly Patrol personnel. AST will continue efforts of recruitment for state troopers by promotion and through further review of current recruiting practices and renovation of the overall recruitment program. AST intends to rapidly fill each of our two-on, two-off remote posts to ensure continuity of services in those rural locations. In addition, AST will be working to convert additional post locations to two-on, two-off posts where appropriate to provide cost savings while enhancing the level of service to those areas. AST will increase efforts to attract qualified applicants to fill vacant VPSO positions and to highlight the importance of the VPSO program in rural Alaska. AST will increase efforts to document the state of DPS/AST facilities and the need to repair, replace, or upgrade current facilities.

Significant Changes in Results to be Delivered in FY2018

The Alaska State Troopers (AST) Division is continuing to aggressively pursue technologies such as a Computer Aided Dispatch (CAD) system and an online reporting system that the public can utilize. These new programs will enable the division to conduct its duties more efficiently.

AST anticipates providing access to the Alaska Records Management System (ARMS) to other agencies, both state and municipal. This will create significant efficiencies for both DPS and other agencies and will exponentially increase the information sharing capabilities that Alaska law enforcement will be able to experience. Long term, this will undoubtedly result in more timely identification of offenders as well as the ability to address some of the current trends which affect the public on a statewide basis. This effort was started in FY2014 and will continue into FY2017 and FY2018.

AST Director: The director has a major role in implementing statewide law enforcement policy. The director's staff is responsible for administering the division's budget and carrying out policy. Balancing law enforcement service needs of various areas of the state with the very limited number of commissioned officers and resources requires constant review and evaluation.

Under collective bargaining agreements, the director's staff must devote a good deal of time to considering the transfer of individual officers, their educational and career development needs, and their training and discipline. The director must also develop a practice and environment that promotes planning for greater efficiency of processes and more prudent use of public funding.

The director of the Alaska State Troopers is also responsible for organizational succession planning through the

preparation and mentoring of suitable candidates for higher command positions. The director's office implements new technologies and modern business practices to achieve greater efficiencies, while remaining attentive to the needs of the workforce to maintain productivity and facilitate recruitment and retention.

Two key issues facing the Alaska State Troopers Director's Office are human and physical resources and facilities. Performing basic public safety functions across a very large area is extremely challenging while striving to maintain public trust and security as well as employee safety. It is a continual balancing act to allocate resources that are directly responsible for responding to calls for service while also ensuring that proactive enforcement activities are implemented. This is an ongoing challenge that the Director's Office is challenged with and AST is rapidly approaching the point where public expectation and the ability to deliver commensurate services will no longer coincide. There will have to be some reductions in the level of service that AST will be able to provide to the public as staffing becomes stretched beyond the realistic ability to further add to the workload of the available employees. Facilities in many locations are inadequate to support the needs of personnel resources. A number of facilities are very old and in need of significant renovation to bring them up to a level of reasonable suitability, putting them in a condition where they are able to provide a safe and secure office environment. A significant concern is the necessary preparation time required for any major infrastructure project.

The third, and likely most pressing issue, is the complex emergency dispatch services conglomeration that AST must continue to deal with. Two of the three primary dispatch centers that AST must rely on do not belong to AST. AST contracts with the City of Wasilla in one of them with ever-rising cost increases being presented to the state by the city along with reductions in services and no governance board to provide AST with meaningful input into the daily operations of the center and the services delivered. The second non-AST dispatch center is located in the Kenai Peninsula and it is co-staffed by DPS and Kenai-Peninsula Borough employees. This complex arrangement also poses significant challenges in the oversight and management of the center and its collective employees, and current arrangement does not provide for any governance board and allows for only marginal DPS input into operations, workflow, and services delivered.

These arrangements are not conducive to AST (and the department) providing comprehensive, consistent, standardized dispatch services to citizens across the state whose safety is the department's responsibility.

Statutory and Regulatory Authority

DPS-Powers and duties of department (AS 44.41.020)
State Troopers (AS 18.65.010 - AS 18.65.110)
Police Protection (AS 18.65.010 - AS 18.65.790)
Law enforcement duties (AS 18.65.010 - AS 18.65.086)
Controlled Substances (AS 11.71.010 - AS 11.71.900)
Judicial Services (AS 22.20.100 - AS 22.20.140)
Prisoner Transportation (AS 33.30.071 and AS 33.30.081)
Search & Rescue (AS 18.60.120 - AS 18.60.175)
Village Public Safety Officer Definition (AS 01.10.060(c)(7)(C))
VPSO Program (AS 18.65.670)
VPSO Regulations (13 AAC 96.010-900)
Concealed Handgun Permits (AS 18.65.700)
Security Guard Licensing (AS 18.65.400 - AS 18.65.410)
Sex Offender Registration (AS 12.63.010 - AS 12.63.100)
Central Registry of Sex Offenders (AS 18.65.087)
Department to assist other agencies (AS 18.65.090)
Document and disseminate information regarding homicides (AS 44.41.040)
Document and investigate missing persons (AS 18.65.610)
Investigate fires resulting from crimes (AS 18.70.030)
Investigate sexual assault and child exploitation (AS 18.65.086)
DUI Forfeiture Requirements (AS 28.35.036-.037)
DPS DNA collection and registration requirements (AS 44.41.035)
Duty of Law Enforcement to Provide VCCB information (AS 18.67.175)
Rights of Crime Victims to be notified orally and in writing by Law Enforcement (AS 12.61.010)

Contact Information

Contact: Kelly Howell, Director, Administrative Services

Phone: (907) 269-5591

Fax: (903) 333-7008

E-mail: kelly.howell@alaska.gov

Alaska State Trooper Detachments Personal Services Information				
Authorized Positions			Personal Services Costs	
	FY2017 Management Plan	FY2018 Governor		
Full-time	364	363	Annual Salaries	30,307,864
Part-time	0	0	Premium Pay	4,221,644
Nonpermanent	2	2	Annual Benefits	19,458,605
			<i>Less 6.31% Vacancy Factor</i>	(3,405,913)
			Lump Sum Premium Pay	530,000
Totals	366	365	Total Personal Services	51,112,200

Position Classification Summary					
Job Class Title	Anchorage	Fairbanks	Juneau	Others	Total
Accounting Tech I	1	0	0	0	1
Admin Asst III	1	0	0	0	1
Admin Investigator I - DPS	1	0	0	0	1
Admin Investigator II - DPS	1	0	0	0	1
Administrative Assistant I	1	1	0	1	3
Administrative Assistant II	2	1	0	4	7
Aircraft Pilot I	0	0	0	2	2
Aircraft Pilot II	0	1	0	0	1
Analyst/Programmer II	1	0	0	0	1
Captain, Dept of Public Safety	2	1	0	2	5
Court Services Officer	1	9	2	21	33
Criminal Justice Technician I	3	2	0	6	11
Criminal Justice Technician II	1	0	0	0	1
Division Director	1	0	0	0	1
Emergency Dispatch Supervisor	0	1	0	0	1
Emergency Serv. Dispatcher II	0	3	0	2	5
Emergency Service Dispatcher I	0	15	0	13	28
Enviro Services Journey II	0	1	0	0	1
Forensic Tech II	0	1	0	1	2
Information Officer II	1	0	0	0	1
Information Officer III	1	0	0	0	1
Information System Coordinator	1	0	0	0	1
Lieutenant, Dept Public Safety	4	2	0	5	11
Mail Svcs Courier	1	0	0	0	1
Maint Gen Journey	0	1	0	0	1
Major, Dept of Public Safety	2	0	0	0	2
Micro/Network Tech II	1	0	0	0	1
Office Assistant II	3	4	0	10	17
Office Assistant III	1	0	1	14	16
Procurement Spec I	1	0	0	0	1
Program Coordinator I	1	0	0	0	1
Secretary	1	0	0	0	1
Sergeant PS	1	6	1	28	36
State Trooper	4	28	3	126	161
State Trooper Recruit	0	2	0	4	6
Telecomm Planner	1	0	0	0	1

Position Classification Summary					
Job Class Title	Anchorage	Fairbanks	Juneau	Others	Total
Totals	40	79	7	239	365

Component Detail All Funds
Department of Public Safety

Component: Alaska State Trooper Detachments (2325)
RDU: Alaska State Troopers (160)

Non-Formula Component

	FY2016 Actuals	FY2017 Conference Committee	FY2017 Authorized	FY2017 Management Plan	FY2018 Governor	FY2017 Management Plan vs FY2018 Governor	
71000 Personal Services	52,583.4	50,303.9	50,303.9	50,142.7	51,112.2	969.5	1.9%
72000 Travel	1,477.0	1,785.2	1,785.2	1,785.2	1,310.2	-475.0	-26.6%
73000 Services	11,998.2	11,291.2	11,291.2	11,291.2	11,567.0	275.8	2.4%
74000 Commodities	807.6	985.8	985.8	985.8	900.0	-85.8	-8.7%
75000 Capital Outlay	17.8	263.7	263.7	263.7	48.7	-215.0	-81.5%
77000 Grants, Benefits	0.0	0.0	0.0	0.0	0.0	0.0	0.0%
78000 Miscellaneous	0.0	0.0	0.0	0.0	0.0	0.0	0.0%
Totals	66,884.0	64,629.8	64,629.8	64,468.6	64,938.1	469.5	0.7%
Fund Sources:							
1004Gen Fund (UGF)	65,663.2	63,304.2	63,304.2	63,143.0	63,684.4	541.4	0.9%
1005GF/Prgm (DGF)	17.8	275.0	275.0	275.0	275.0	0.0	0.0%
1007I/A Rcpts (Other)	1,155.7	712.0	712.0	712.0	714.8	2.8	0.4%
1055IA/OIL HAZ (Other)	0.0	50.3	50.3	50.3	50.6	0.3	0.6%
1061CIP Rcpts (Other)	47.3	288.3	288.3	288.3	213.3	-75.0	-26.0%
Unrestricted General (UGF)	65,663.2	63,304.2	63,304.2	63,143.0	63,684.4	541.4	0.9%
Designated General (DGF)	17.8	275.0	275.0	275.0	275.0	0.0	0.0%
Other Funds	1,203.0	1,050.6	1,050.6	1,050.6	978.7	-71.9	-6.8%
Federal Funds	0.0	0.0	0.0	0.0	0.0	0.0	0.0%
Positions:							
Permanent Full Time	367	365	365	364	363	-1	-0.3%
Permanent Part Time	0	0	0	0	0	0	0.0%
Non Permanent	7	2	2	2	2	0	0.0%

Change Record Detail - Multiple Scenarios with Descriptions
Department of Public Safety

Component: Alaska State Trooper Detachments (2325)
RDU: Alaska State Troopers (160)

Scenario/Change Record Title	Trans Type	Totals	Personal Services	Travel	Services	Commodities	Capital Outlay	Grants, Benefits	Miscellaneous	Positions		NP
										PFT	PPT	
***** Changes From FY2017 Conference Committee To FY2017 Authorized *****												
FY2017 Conference Committee												
	ConfCom	64,149.8	49,823.9	1,785.2	11,291.2	985.8	263.7	0.0	0.0	361	0	2
1004 Gen Fund		62,824.2										
1005 GF/Prgm		275.0										
1007 I/A Rcpts		712.0										
1055 IA/OIL HAZ		50.3										
1061 CIP Rcpts		288.3										
AST Detachments Sec321 Ch3 4SSLA2016 P96 L15 (HB256)												
	ConfC(L)	480.0	480.0	0.0	0.0	0.0	0.0	0.0	0.0	4	0	0
1004 Gen Fund		480.0										
The sum of \$480,000 is appropriated from the general fund to the Department of Public Safety, Alaska State Troopers, Alaska State Trooper Detachments, for operating expenses for the year ending June 30, 2017.												
Subtotal		64,629.8	50,303.9	1,785.2	11,291.2	985.8	263.7	0.0	0.0	365	0	2
***** Changes From FY2017 Authorized To FY2017 Management Plan *****												
Transfer Funding for State Trooper (12-1065) to Alaska Bureau of Investigation												
	Trout	-161.2	-161.2	0.0	0.0	0.0	0.0	0.0	0.0	-1	0	0
1004 Gen Fund		-161.2										
PCN 12-1065 (originally assigned to AST Detachments) was deleted in FY2017 Governor Amended. The department subsequently restored the position in the Alaska Bureau of Investigation, resulting in \$161.2 being transferred to ABI.												
Subtotal		64,468.6	50,142.7	1,785.2	11,291.2	985.8	263.7	0.0	0.0	364	0	2
***** Changes From FY2017 Management Plan To FY2018 Governor *****												
FY2018 Salary and Health Insurance Increases												
	SalAdj	50.4	50.4	0.0	0.0	0.0	0.0	0.0	0.0	0	0	0
1004 Gen Fund		49.1										
1007 I/A Rcpts		1.0										
1055 IA/OIL HAZ		0.3										
Includes: ACOA COLA, 2.25% per contract ending 6/30/2018; GGU HI increase from \$1346 to \$1389; LTC HI increase from \$1363 to \$1432.: \$50.4												
FY2018 PS Health Ins.: \$48.1												
FY2018 PS Health Ins.: \$2.3												

Change Record Detail - Multiple Scenarios with Descriptions
Department of Public Safety

Component: Alaska State Trooper Detachments (2325)
RDU: Alaska State Troopers (160)

Scenario/Change Record Title	Trans Type	Totals	Personal Services	Travel	Services	Commodities	Capital Outlay	Grants, Benefits	Miscellaneous	Positions		NP
										PFT	PPT	
Reduce Expenditure Level Through the Deletion of Three Positions												
1004 Gen Fund	Dec	-403.1	-403.1	0.0	0.0	0.0	0.0	0.0	0.0	-3	0	0
The AST Detachments component will achieve reductions in expenditure levels by deleting three permanent full time positions: one of two Anchorage administrative Captain positions (12-1919), one of two Fairbanks Environmental Services Journey positions (12-1539), and an Anchorage Criminal Justice Technician (12-1889). The duties of these deleted positions will be reallocated among appropriate existing staff.												
Transfer Forensic Technician II (12-4229) from Laboratory Services to Align Budget and Organization												
1004 Gen Fund	Trin	83.7	83.7	0.0	0.0	0.0	0.0	0.0	0.0	1	0	0
This transfer properly aligns the budget structure with the organizational structure of this position.												
Transfer State Trooper (12-2037) from VPSO to Align Budget and Organization												
1004 Gen Fund	Trin	166.1	166.1	0.0	0.0	0.0	0.0	0.0	0.0	1	0	0
This change record aligns the budget funding and position counts for the VPSO RDU and the AST Detachments.												
State Trooper (12-2037) transferred with funding from the Village Public Safety Office (VPSO) RDU to Alaska State Troopers (AST) Detachments. There is a substantial need to provide additional personnel in Bethel to service the surrounding villages and communities. Currently C-Detachment investigates 55 percent of all sexual related offenses for the department; 40 percent of these are conducted in the Y-K delta which is serviced by the Bethel post along with Aniak, St. Mary's, Emmonak and Hooper Bay. When incidents occur in the outposts, the victims in many cases are sent to Bethel for treatment and evaluation. By moving this position to AST Detachments, the Bethel post will be better able to support the outpost in investigating these offenses.												
Align Authority for Anticipated Fiscal Year Obligations												
	LIT	0.0	425.0	-175.0	50.8	-85.8	-215.0	0.0	0.0	0	0	0
Align authority for anticipated fiscal year obligations based upon the prior year expenditures for services. Additional authority is needed to cover increased personal services costs. The remaining travel and equipment authority is sufficient to cover anticipated expenses.												
Transfer Court Services Officer (12-1965) from Judicial Services to Align Budget and Organization												
1004 Gen Fund	Trin	139.7	139.7	0.0	0.0	0.0	0.0	0.0	0.0	1	0	0
This change record aligns the budget funding and position counts within the AST RDU between Judicial Services and AST Detachments.												
Court Services Officer (12-1965) transferred with funding from the Judicial Services component to the Alaska State Troopers (AST) Detachments component, within the AST RDU. The Bethel Judicial Services Office has a significant caseload and due to the separation from Anchorage Judicial Services, is unable to rely on other Court Service Officers to assist. When an increased need for paper service, prisoner transports, or court room security arises, assistance from the troopers at the Bethel Post is required. The use of trooper positions for these functions hinders the effective and efficient completion of the AST mission in the												

Change Record Detail - Multiple Scenarios with Descriptions
Department of Public Safety

Component: Alaska State Trooper Detachments (2325)

RDU: Alaska State Troopers (160)

Scenario/Change Record Title	Trans Type	Totals	Personal Services	Travel	Services	Commodities	Capital Outlay	Grants, Benefits	Miscellaneous	Positions		NP
										PFT	PPT	
region. Currently Court Service Officer PCN 12-1910 is double filled to meet the needs of the department and to effectively serve the public. The relocation of PCN 12-1965 will allow the post to effectively manage the work load and remove the double fill.												
Transfer Office Assistant II (12-1830) to Judicial Services to Align Budget and Organization												
	Trout	-92.3	-92.3	0.0	0.0	0.0	0.0	0.0	0.0	-1	0	0
1004 Gen Fund		-92.3										
This change record aligns the budget funding and position counts within the AST RDU between Judicial Services and AST Detachments.												
Office Assistant II (12-1830) transferred with funding from the Alaska State Troopers (AST) Detachments component to the Judicial Services component, within the AST RDU.												
In Anchorage, the Alaska State Troopers Judicial Services Unit operates control rooms, within their respective court buildings and holding areas. If this Emergency Services Dispatcher I (ESDI) position is not established, the control rooms will have to be staffed by CSOs. This will result in each area having fewer Court Services Officers available for prisoner transports, courtroom security and the service of court ordered paperwork. This is a very inefficient utilization of the CSOs and exacerbates the impacts of the vacancies that this location currently faces. The implementation of the ESDI position will continue to allow the CSOs to focus on their primary mission of prisoner transport and court house security while allowing for the dedicated ESDI to manage the operations of the control rooms.												
Reverse AST Detachments Sec32I Ch3 4SSLA2016 P96 L15 (HB 256)												
	OTI	-480.0	-480.0	0.0	0.0	0.0	0.0	0.0	0.0	0	0	0
1004 Gen Fund		-480.0										
Conference committee restored 4 PFT positions and added \$480.0 to AST detachments.												
Restore AST Detachments Sec32I Ch3 4SSLA2016 P96 L15 (HB 256)												
	IncM	480.0	480.0	0.0	0.0	0.0	0.0	0.0	0.0	0	0	0
1004 Gen Fund		480.0										
Restore Conference Committee language item restoring \$480.0 and 4 PFT positions to AST Detachments.												
Delete Uncollectible CIP Receipts No Longer Available for AST Detachments												
	Dec	-75.0	0.0	-75.0	0.0	0.0	0.0	0.0	0.0	0	0	0
1061 CIP Rcpts		-75.0										
The division anticipates that \$75.0 of CIP receipt authority will be uncollectible in FY2018. This change brings budgeted authority in line with anticipated revenue collections.												
Align Authority For Projected Expenditures												
	LIT	0.0	0.0	-225.0	225.0	0.0	0.0	0.0	0.0	0	0	0
Align unused authority in travel to cover anticipated expenditures in services, where additional authority is needed.												

Change Record Detail - Multiple Scenarios with Descriptions
Department of Public Safety

Component: Alaska State Trooper Detachments (2325)
RDU: Alaska State Troopers (160)

Scenario/Change Record Title	Trans Type	Totals	Personal Services	Travel	Services	Commodities	Capital Outlay	Grants, Benefits	Miscellaneous	Positions		NP
										PFT	PPT	
Supervisory Unit 15 Hour Furlough Contract Terms												
	SalAdj	-15.3	-15.3	0.0	0.0	0.0	0.0	0.0	0.0	0	0	0
1004 Gen Fund		-14.7										
1007 I/A Rcpts		-0.6										
Alaska Public Employees Association, supervisory unit, 15 hours of furlough required for each permanent full-time employee in each year from July 1, 2016 to June 30, 2018.												
FY2018 Alaska Care & PSEA Health Insurance Increase												
	SalAdj	615.3	615.3	0.0	0.0	0.0	0.0	0.0	0.0	0	0	0
1004 Gen Fund		612.9										
1007 I/A Rcpts		2.4										
Health insurance increase from \$1346 to \$1555 per month for PSEA members. \$549.4												
Alaska Care rate increase from \$1346 to \$1555 per month for APEA members. \$63.5												
Alaska Care rate increase from \$1346 to \$1555 per month for exempt and partially exempt employees. \$2.4												
Totals		64,938.1	51,112.2	1,310.2	11,567.0	900.0	48.7	0.0	0.0	363	0	2

Personal Services Expenditure Detail
Department of Public Safety

Scenario: FY2018 Governor (13956)
Component: Alaska State Trooper Detachments (2325)
RDU: Alaska State Troopers (160)

PCN	Job Class Title	Time Status	Retire Code	Barg Unit	Location	Salary Sched	Range / Step	Comp Months	Split / Count	Annual Salaries	COLA	Premium Pay	Annual Benefits	Total Costs	UGF Amount
10-5047	Emergency Service Dispatcher I	FT	A	GP	Fairbanks	103	15C / D	12.0		52,516	0	3,976	38,049	94,541	42,544
12-0099	Sergeant PS	FT	P	AA	Anchorage	100	78L	12.0		103,061	0	13,028	62,340	178,429	178,429
12-1005	Emergency Service Dispatcher I	FT	A	GP	Ketchikan	100	15K	12.0		62,172	0	5,559	42,274	110,005	110,005
12-1007	Emergency Service Dispatcher I	FT	A	GP	Ketchikan	100	15J	12.0		60,216	0	9,148	42,888	112,252	112,252
12-1013	Captain, Dept of Public Safety	FT	P	SS	Anchorage	99	24O	12.0		125,197	0	4,256	67,369	196,822	196,822
12-1014	Captain, Dept of Public Safety	FT	P	SS	Fairbanks	99	24O	12.0		138,789	0	4,256	71,645	214,690	214,690
12-1016	Information System Coordinator	FT	A	GP	Anchorage	100	18E / F	12.0		66,297	0	0	41,735	108,032	108,032
12-1019	State Trooper	FT	P	AA	Nome	137	76F	12.0		105,180	0	20,933	66,108	192,221	192,221
12-1024	Captain, Dept of Public Safety	FT	P	SS	Soldotna	99	24K / L	12.0		119,766	0	4,256	65,466	189,488	189,488
12-1027	Major, Dept of Public Safety	FT	P	SS	Anchorage	100	25M	12.0		154,027	0	756	75,338	230,121	230,121
12-1029	State Trooper	FT	P	AA	Palmer	100	76K / L	12.0		83,676	0	18,913	57,265	159,854	159,854
12-1031	State Trooper	FT	P	AA	Kotzebue	160	76K / L	12.0		142,357	0	33,077	81,691	257,125	257,125
12-1034	State Trooper	FT	P	AA	Ketchikan	1EE	76L / M	12.0		93,360	0	19,244	61,030	173,634	173,634
12-1037	Sergeant PS	FT	P	AA	Saint Marys	150	78F	12.0		133,428	0	26,468	76,802	236,698	236,698
12-1040	State Trooper	FT	P	AA	Juneau	105	76P / Q	12.0		105,457	0	18,971	65,474	189,902	189,902
12-1041	State Trooper	FT	P	AA	Northway	1GG	76D / E	12.0		85,756	0	18,510	57,895	162,161	162,161
12-1045	Sergeant PS	FT	P	AA	Tok	115	78L / M	12.0		123,558	0	24,698	73,140	221,396	221,396
12-1048	Sergeant PS	FT	P	AA	Wasilla	100	78M	12.0		103,056	0	19,519	64,778	187,353	187,353
12-1049	State Trooper	FT	P	AA	Wasilla	100	76F / J	12.0		77,256	0	22,149	56,068	155,473	155,473
12-1055	Office Assistant II	FT	A	GP	Soldotna	100	10C / D	12.0		36,541	0	0	30,550	67,091	67,091
12-1057	Lieutenant, Dept Public Safety	FT	P	SS	Palmer	99	23K / L	12.0		117,814	0	4,256	64,732	186,802	186,802
12-1061	Sergeant PS	FT	P	AA	Ketchikan	1EE	78M / N	12.0		115,367	0	17,951	68,441	201,759	201,759
12-1064	Sergeant PS	FT	P	AA	Palmer	100	78L / M	12.0		101,196	0	21,731	64,910	187,837	187,837
12-1067	State Trooper	FT	P	AA	Soldotna	100	76J / K	12.0		85,158	0	16,447	56,895	158,500	158,500
12-1069	State Trooper	FT	P	AA	Palmer	100	76E / F	12.0		75,621	0	14,062	52,414	142,097	142,097
12-1070	State Trooper	FT	P	AA	Palmer	100	76C / D	12.0		69,608	0	10,523	48,823	128,954	128,954
12-1074	Captain, Dept of Public Safety	FT	P	SS	Palmer	99	24O / P	12.0		136,757	0	5,456	71,383	213,596	213,596
12-1078	Emergency Serv. Dispatcher II	FT	A	GP	Fairbanks	103	16B / C	12.0		53,736	0	7,482	39,826	101,044	101,044
12-1079	Administrative Assistant II	FT	A	GP	Fairbanks	103	14G / J	12.0		55,778	0	0	37,781	93,559	93,559

Note: If a position is split, an asterisk (*) will appear in the Split/Count column. If the split position is also counted in the component, two asterisks (**) will appear in this column. [No valid job title] appearing in the Job Class Title indicates that the PCN has an invalid class code or invalid range for the class code effective date of this scenario.

Personal Services Expenditure Detail
Department of Public Safety

Scenario: FY2018 Governor (13956)
Component: Alaska State Trooper Detachments (2325)
RDU: Alaska State Troopers (160)

PCN	Job Class Title	Time Status	Retire Code	Barg Unit	Location	Salary Sched	Range / Step	Comp Months	Split / Count	Annual Salaries	COLA	Premium Pay	Annual Benefits	Total Costs	UGF Amount
12-1080	Emergency Service Dispatcher I	FT	A	GP	Fairbanks	103	15K / L	12.0		65,589	0	9,728	45,125	120,442	120,442
12-1081	Emergency Service Dispatcher I	FT	A	GP	Fairbanks	103	15E / F	12.0		56,015	0	7,030	40,512	103,557	103,557
12-1082	Emergency Service Dispatcher I	FT	A	GP	Fairbanks	103	15C / D	12.0		53,664	0	4,128	38,538	96,330	96,330
12-1083	Emergency Service Dispatcher I	FT	A	GP	Fairbanks	103	15J / K	12.0		62,613	0	7,097	43,018	112,728	112,728
12-1086	Sergeant PS	FT	P	AA	Dillingham	137	78J / K	12.0		128,419	0	20,801	73,444	222,664	222,664
12-1088	State Trooper	FT	P	AA	Soldotna	100	76C / D	12.0		69,608	0	11,323	49,124	130,055	130,055
12-1091	State Trooper	FT	P	AA	Ketchikan	1EE	76L	11.5	**	98,683	0	13,018	59,911	171,612	171,612
12-1093	State Trooper	FT	P	AA	Wasilla	100	76J / K	12.0		80,652	0	14,735	54,558	149,945	149,945
12-1094	State Trooper	FT	P	AA	Palmer	100	76J / K	12.0		80,652	0	20,709	56,803	158,164	158,164
12-1098	State Trooper	FT	P	AA	Nome	137	76F / J	12.0		108,799	0	20,772	67,262	196,833	196,833
12-1100	Sergeant PS	FT	P	AA	Nome	137	78M / N	12.0		147,229	0	21,701	79,645	248,575	248,575
12-1101	State Trooper	FT	P	AA	Bethel	150	76C / D	12.0		105,060	0	19,827	65,647	190,534	190,534
12-1106	Office Assistant II	FT	A	GP	Fairbanks	99	10N	12.0		48,856	0	0	35,179	84,035	84,035
12-1109	Administrative Assistant II	FT	A	GP	Anchorage	100	14J / K	12.0		56,484	0	0	38,046	94,530	94,530
12-1111	Administrative Assistant II	FT	A	GP	Ketchikan	99	14Q	12.0		72,492	0	0	44,064	116,556	116,556
12-1113	Lieutenant, Dept Public Safety	FT	P	SS	Soldotna	99	23N	12.0		116,610	0	4,256	64,279	185,145	185,145
12-1115	Lieutenant, Dept Public Safety	FT	P	SS	Bethel	99	23N / O	12.0		181,244	0	4,256	85,001	270,501	270,501
12-1117	Emergency Service Dispatcher I	FT	A	GP	Soldotna	100	15D / E	12.0		52,874	0	5,961	38,930	97,765	97,765
12-1119	Emergency Serv. Dispatcher II	FT	A	GP	Fairbanks	103	16G / J	12.0		64,935	0	7,305	43,969	116,209	116,209
12-1120	Criminal Justice Technician I	FT	A	GP	Bethel	150	12A / B	12.0		59,018	0	0	38,999	98,017	98,017
12-1122	State Trooper	FT	P	AA	Ketchikan	1EE	76M	11.5	**	91,678	0	12,147	56,950	160,775	160,775
12-1123	State Trooper	FT	P	AA	Cooper Landing	100	76J / K	12.0		82,271	0	13,735	54,790	150,796	150,796
12-1125	State Trooper	FT	P	AA	Soldotna	100	76E / F	12.0		74,928	0	15,837	52,820	143,585	143,585
12-1128	Sergeant PS	FT	P	AA	Fairbanks	103	78J / K	12.0		98,468	0	18,732	62,757	179,957	179,957
12-1130	State Trooper	FT	P	AA	King Salmon	150	76F	12.0		115,164	0	20,960	69,324	205,448	205,448
12-1133	State Trooper	FT	P	AA	Glennallen	1FF	76F	12.0		87,978	0	18,481	58,720	165,179	165,179
12-1138	State Trooper	FT	P	AA	Palmer	100	76D / E	12.0		73,670	0	12,992	51,278	137,940	137,940
12-1140	Sergeant PS	FT	P	AA	Kenai	100	78O / P	12.0		112,143	0	17,455	67,271	196,869	196,869
12-1150	Lieutenant, Dept Public	FT	P	SS	Anchorage	99	23M / N	12.0		115,857	0	4,256	63,996	184,109	184,109

Note: If a position is split, an asterisk (*) will appear in the Split/Count column. If the split position is also counted in the component, two asterisks (**) will appear in this column. [No valid job title] appearing in the Job Class Title indicates that the PCN has an invalid class code or invalid range for the class code effective date of this scenario.

Personal Services Expenditure Detail
Department of Public Safety

Scenario: FY2018 Governor (13956)
Component: Alaska State Trooper Detachments (2325)
RDU: Alaska State Troopers (160)

PCN	Job Class Title	Time Status	Retire Code	Barg Unit	Location	Salary Sched	Range / Step	Comp Months	Split / Count	Annual Salaries	COLA	Premium Pay	Annual Benefits	Total Costs	UGF Amount
12-1155	Safety Office Assistant III	FT	A	GP	Aniak	150	11C / D	12.0		58,430	0	0	38,778	97,208	97,208
12-1158	Division Director	FT	P	XE	Anchorage	N00	27K	12.0		131,112	0	756	67,985	199,853	199,853
12-1161	Lieutenant, Dept Public	FT	P	SS	Wasilla	99	23K / L	12.0		110,484	0	5,456	62,428	178,368	178,368
12-1164	Safety Administrative Assistant II	FT	A	SS	Soldotna	99	14O	12.0		67,619	0	0	44,264	111,883	111,883
12-1167	Emergency Service Dispatcher I	FT	A	GP	Fairbanks	103	15F / G	12.0		58,818	0	4,425	40,587	103,830	103,830
12-1171	Emergency Service Dispatcher I	FT	A	GP	Fairbanks	103	15B / C	12.0		51,175	0	3,838	37,493	92,506	92,506
12-1177	State Trooper	FT	P	AA	Nome	137	76O / P	12.0		135,079	0	20,054	75,304	230,437	230,437
12-1183	State Trooper	FT	P	AA	Seward	100	76J / K	12.0		80,652	0	18,717	56,055	155,424	155,424
12-1185	State Trooper	FT	P	AA	Delta Junction	115	76E / F	12.0		90,533	0	20,372	60,391	171,296	171,296
12-1188	State Trooper	FT	P	AA	Anchor Point	100	76E / F	12.0		74,928	0	14,987	52,501	142,416	142,416
12-1191	State Trooper	FT	P	AA	Palmer	100	76M	12.0		92,292	0	15,246	59,125	166,663	166,663
12-1192	Court Services Officer	FT	P	AA	Nome	137	74K	12.0		97,716	0	9,564	59,028	166,308	166,308
12-1193	Sergeant PS	FT	P	AA	Healy	115	78L / M	12.0		117,108	0	24,064	70,912	212,084	212,084
12-1196	Office Assistant III	FT	A	GP	Juneau	105	11F / G	12.0		44,504	0	0	33,543	78,047	78,047
12-1209	State Trooper	FT	P	AA	Aniak	150	76D / E	12.0		108,996	0	7,256	62,401	178,653	178,653
12-1210	Information Officer II	FT	A	GP	Anchorage	100	17K	12.0		71,220	0	0	43,585	114,805	114,805
12-1211	State Trooper	FT	P	AA	Fairbanks	103	76D / E	12.0		75,189	0	17,063	53,379	145,631	145,631
12-1212	Sergeant PS	FT	P	AA	Fairbanks	103	78L	12.0		102,312	0	16,430	63,337	182,079	182,079
12-1213	State Trooper	FT	P	AA	Fairbanks	103	76C / D	12.0		73,133	0	20,305	53,825	147,263	147,263
12-1215	State Trooper	FT	P	AA	Palmer	100	76L / M	12.0		92,291	0	11,128	57,577	160,996	160,996
12-1218	Lieutenant, Dept Public Safety	FT	P	SS	Anchorage	99	23N	12.0		120,980	0	5,456	66,373	192,809	192,809
12-1219	Lieutenant, Dept Public Safety	FT	P	SS	Fairbanks	99	23N / O	12.0		121,370	0	6,956	67,014	195,340	195,340
12-1221	Office Assistant III	FT	A	GP	Anchor Point	100	11C / D	12.0		38,851	0	0	31,418	70,269	70,269
12-1222	Administrative Assistant I	FT	A	GP	Fairbanks	103	12J	12.0		50,208	0	0	35,687	85,895	85,895
12-1231	State Trooper	FT	P	AA	Fairbanks	103	76D / E	12.0		74,384	0	17,588	53,274	145,246	145,246
12-1235	State Trooper	FT	P	AA	Soldotna	100	76J / K	12.0		82,271	0	16,722	55,913	154,906	154,906
12-1236	State Trooper	FT	P	AA	Soldotna	100	76M / N	12.0		89,929	0	15,841	58,461	164,231	164,231
12-1237	State Trooper	FT	P	AA	Kodiak	111	76E / F	12.0		84,851	0	17,532	57,188	159,571	159,571
12-1238	State Trooper	FT	P	AA	Kodiak	111	76F	12.0		85,236	0	18,787	57,804	161,827	161,827
12-1240	Admin Investigator I - DPS	FT	A	GP	Anchorage	100	21B / C	12.0		75,581	0	0	45,225	120,806	0
12-1241	Emergency Serv. Dispatcher II	FT	A	SS	Ketchikan	99	16L	12.0		68,871	0	5,301	46,727	120,899	120,899

Note: If a position is split, an asterisk (*) will appear in the Split/Count column. If the split position is also counted in the component, two asterisks (**) will appear in this column. [No valid job title] appearing in the Job Class Title indicates that the PCN has an invalid class code or invalid range for the class code effective date of this scenario.

Personal Services Expenditure Detail
Department of Public Safety

Scenario: FY2018 Governor (13956)
Component: Alaska State Trooper Detachments (2325)
RDU: Alaska State Troopers (160)

PCN	Job Class Title	Time Status	Retire Code	Barg Unit	Location	Salary Sched	Range / Step	Comp Months	Split / Count	Annual Salaries	COLA	Premium Pay	Annual Benefits	Total Costs	UGF Amount
12-1242	Emergency Serv. Dispatcher II	FT	A	GP	Fairbanks	99	16M / N	12.0		76,052	0	11,283	49,643	136,978	136,978
12-1243	Secretary	FT	A	GP	Anchorage	100	11E / F	12.0		41,569	0	0	32,440	74,009	74,009
12-1249	Office Assistant III	FT	A	GP	Seward	100	11B / C	12.0		38,013	0	0	31,103	69,116	69,116
12-1251	State Trooper	FT	P	AA	Anchor Point	100	76K	12.0		82,644	0	19,621	57,143	159,408	159,408
12-1252	State Trooper	FT	P	AA	Kodiak	111	76L	12.0		95,184	0	16,970	60,860	173,014	173,014
12-1255	State Trooper	FT	P	AA	Fairbanks	103	76J / K	12.0		88,313	0	13,122	56,831	158,266	158,266
12-1256	State Trooper	FT	P	AA	Haines	1EE	76J / K	12.0		91,534	0	21,588	61,224	174,346	174,346
12-1257	State Trooper	FT	P	AA	Bethel	150	76K / L	12.0		128,604	0	22,758	74,118	225,480	225,480
12-1258	Lieutenant, Dept Public Safety	FT	P	SS	Fairbanks	99	23P	12.0		124,615	0	5,456	67,563	197,634	197,634
12-1259	State Trooper	FT	P	AA	Delta Junction	115	76J	12.0		91,608	0	21,590	61,253	174,451	174,451
12-1261	State Trooper	FT	P	AA	Kotzebue	160	76J / K	12.0		129,068	0	23,425	74,473	226,966	226,966
12-1262	State Trooper	FT	P	AA	Wasilla	100	76D / E	12.0		72,220	0	21,291	53,853	147,364	147,364
12-1263	State Trooper Recruit	FT	P	AA	Wasilla	100	74A / B	12.0		57,192	0	6,971	42,821	106,984	106,984
12-1265	State Trooper	FT	P	AA	Palmer	100	76K	12.0		82,644	0	19,737	57,187	159,568	159,568
12-1268	State Trooper	FT	P	AA	Palmer	100	76A / B	12.0		65,064	0	11,544	47,499	124,107	124,107
12-1272	State Trooper	FT	P	AA	Galena	137	76K	12.0		113,220	0	23,349	69,464	206,033	206,033
12-1275	State Trooper	FT	P	AA	Fairbanks	103	76C / D	12.0		71,696	0	8,881	48,991	129,568	129,568
12-1278	State Trooper	FT	P	AA	Fairbanks	103	76C / D	12.0		71,696	0	6,256	48,004	125,956	125,956
12-1279	State Trooper	FT	P	AA	Wasilla	100	76L	12.0		85,740	0	15,207	56,648	157,595	157,595
12-1281	State Trooper	FT	P	AA	Aniak	150	76N	12.0		121,125	0	19,679	70,796	211,600	211,600
12-1282	State Trooper	FT	P	AA	Cantwell	115	76J / K	12.0		95,489	0	24,669	63,869	184,027	184,027
12-1283	State Trooper	FT	P	AA	Palmer	100	76C / D	12.0		69,608	0	16,931	51,232	137,771	137,771
12-1285	State Trooper	FT	P	AA	Craig	1EE	76L / M	12.0		92,928	0	22,434	62,066	177,428	177,428
12-1289	State Trooper	FT	P	AA	Healy	115	76O	12.0		110,124	0	17,358	66,605	194,087	194,087
12-1299	Criminal Justice Technician I	FT	A	GP	Anchorage	100	12B / C	12.0		40,980	0	0	32,218	73,198	73,198
12-1303	Sergeant PS	FT	P	AA	Palmer	100	78K / L	12.0		99,187	0	19,538	63,330	182,055	182,055
12-1329	Emergency Service Dispatcher I	FT	A	GP	Soldotna	100	15D / E	12.0		52,384	0	5,961	38,746	97,091	97,091
12-1331	Criminal Justice Technician I	FT	A	GP	Anchorage	100	12F / G	12.0		45,913	0	0	34,073	79,986	79,986
12-1332	State Trooper	FT	P	AA	Ketchikan	1EE	76M	11.5	**	91,678	0	12,147	56,950	160,775	160,775
12-1334	State Trooper	FT	P	AA	Saint Marys	150	76F / J	12.0		116,424	0	20,460	69,563	206,447	206,447
12-1335	State Trooper	FT	P	AA	Fairbanks	103	76C / D	12.0		71,696	0	7,086	48,316	127,098	127,098
12-1337	State Trooper	FT	P	AA	Aniak	150	76F	12.0		100,770	0	16,755	62,879	180,404	180,404
12-1338	State Trooper	FT	P	AA	Glennallen	1FF	76A / B	12.0		72,396	0	14,463	51,352	138,211	138,211

Note: If a position is split, an asterisk (*) will appear in the Split/Count column. If the split position is also counted in the component, two asterisks (**) will appear in this column. [No valid job title] appearing in the Job Class Title indicates that the PCN has an invalid class code or invalid range for the class code effective date of this scenario.

Personal Services Expenditure Detail
Department of Public Safety

Scenario: FY2018 Governor (13956)
Component: Alaska State Trooper Detachments (2325)
RDU: Alaska State Troopers (160)

PCN	Job Class Title	Time Status	Retire Code	Barg Unit	Location	Salary Sched	Range / Step	Comp Months	Split / Count	Annual Salaries	COLA	Premium Pay	Annual Benefits	Total Costs	UGF Amount
12-1340	State Trooper	FT	P	AA	Soldotna	100	76D / E	12.0		72,220	0	15,616	51,719	139,555	139,555
12-1341	State Trooper	FT	P	AA	Kodiak	111	76J	12.0		91,081	0	18,302	59,819	169,202	169,202
12-1351	Administrative Assistant II	FT	A	SS	Palmer	500	14B / C	12.0		47,521	0	0	36,709	84,230	84,230
12-1354	Sergeant PS	FT	P	AA	Soldotna	100	78M / N	12.0		106,276	0	24,448	67,625	198,349	198,349
12-1356	Sergeant PS	FT	P	AA	Wasilla	100	78K	12.0		95,748	0	16,991	61,080	173,819	173,819
12-1362	Criminal Justice Technician I	FT	A	GP	Fairbanks	103	12K	12.0		51,840	0	0	36,300	88,140	88,140
12-1363	Office Assistant III	FT	A	GP	Delta Junction	100	11F / G	12.0		42,386	0	0	32,747	75,133	75,133
12-1371	State Trooper	FT	P	AA	Bethel	150	76C / D	12.0		92,759	0	16,799	59,885	169,443	169,443
12-1373	State Trooper	FT	P	AA	Glennallen	1FF	76D / E	12.0		80,348	0	21,649	57,042	159,039	159,039
12-1374	State Trooper	FT	P	AA	Seward	100	76F	12.0		76,776	0	18,444	54,495	149,715	149,715
12-1378	State Trooper	FT	P	AA	Wasilla	100	76F	12.0		76,776	0	19,449	54,873	151,098	151,098
12-1380	Criminal Justice Technician I	FT	A	GP	Fairbanks	103	12K	12.0		51,840	0	0	36,300	88,140	88,140
12-1382	Micro/Network Tech II	FT	A	GP	Anchorage	100	16C / D	12.0		55,074	0	0	37,516	92,590	92,590
12-1383	Sergeant PS	FT	P	AA	Soldotna	100	78L / M	12.0		103,544	0	19,726	65,039	188,309	188,309
12-1384	Sergeant PS	FT	P	AA	Aniak	150	78F / J	12.0		143,623	0	21,358	78,402	243,383	243,383
12-1386	Sergeant PS	FT	P	AA	Fairbanks	103	78J	12.0		95,052	0	15,566	60,283	170,901	170,901
12-1388	Sergeant PS	FT	P	AA	Delta Junction	115	78L / M	12.0		115,323	0	26,345	71,068	212,736	212,736
12-1389	Sergeant PS	FT	P	AA	Soldotna	100	78K	12.0		98,621	0	21,746	63,948	184,315	184,315
12-1391	State Trooper	FT	P	AA	Tok	115	76D / E	12.0		83,056	0	19,555	57,273	159,884	159,884
12-1392	State Trooper	FT	P	AA	Unalakleet	150	76D / E	12.0		108,328	0	21,916	67,474	197,718	197,718
12-1394	State Trooper	FT	P	AA	Fairbanks	103	76B / C	12.0		69,108	0	6,035	46,948	122,091	122,091
12-1395	State Trooper	FT	P	AA	Wasilla	100	76L	12.0		88,959	0	18,684	59,165	166,808	166,808
12-1403	Emergency Service Dispatcher I	FT	A	GP	Soldotna	100	15G	12.0		57,852	0	6,619	41,048	105,519	105,519
12-1404	Emergency Service Dispatcher I	FT	A	GP	Soldotna	100	15B / C	12.0		49,979	0	4,938	37,457	92,374	92,374
12-1408	Sergeant PS	FT	P	AA	Wasilla	100	78L	12.0		99,336	0	22,734	64,588	186,658	186,658
12-1411	State Trooper	FT	P	AA	Cantwell	115	76K	12.0		95,040	0	22,722	62,968	180,730	180,730
12-1412	State Trooper	FT	P	AA	Fairbanks	103	76D / E	12.0		75,879	0	18,088	54,024	147,991	147,991
12-1415	Sergeant PS	FT	P	AA	Bethel	150	78K / L	12.0		154,602	0	22,666	82,268	259,536	259,536
12-1416	Sergeant PS	FT	P	AA	Bethel	150	78O	12.0		166,416	0	39,739	91,355	297,510	297,510
12-1417	State Trooper	FT	P	AA	Fairbanks	103	76C / D	12.0		73,133	0	13,173	51,144	137,450	137,450
12-1418	State Trooper	FT	P	AA	Fairbanks	103	76L	12.0		88,308	0	18,564	58,875	165,747	165,747
12-1419	Emergency Service Dispatcher I	FT	A	GP	Soldotna	100	15E / F	12.0		55,590	0	5,145	39,644	100,379	100,379

Note: If a position is split, an asterisk (*) will appear in the Split/Count column. If the split position is also counted in the component, two asterisks (**) will appear in this column. [No valid job title] appearing in the Job Class Title indicates that the PCN has an invalid class code or invalid range for the class code effective date of this scenario.

Personal Services Expenditure Detail
Department of Public Safety

Scenario: FY2018 Governor (13956)
Component: Alaska State Trooper Detachments (2325)
RDU: Alaska State Troopers (160)

PCN	Job Class Title	Time Status	Retire Code	Barg Unit	Location	Salary Sched	Range / Step	Comp Months	Split / Count	Annual Salaries	COLA	Premium Pay	Annual Benefits	Total Costs	UGF Amount
12-1420	Emergency Service Dispatcher I	FT	A	GP	Ketchikan	100	15E / F	12.0		54,730	0	6,153	39,700	100,583	100,583
12-1421	Office Assistant II	FT	A	GP	Wasilla	100	10A / B	12.0		34,575	0	0	29,811	64,386	64,386
12-1423	Office Assistant II	FT	A	GP	Anchorage	100	10D / E	12.0		37,370	0	0	30,861	68,231	68,231
12-1427	Emergency Service Dispatcher I	FT	A	GP	Ketchikan	100	15B / C	12.0		48,601	0	5,544	37,167	91,312	91,312
12-1428	Emergency Service Dispatcher I	FT	A	GP	Fairbanks	103	15G	12.0		59,592	0	9,053	42,617	111,262	111,262
12-1431	State Trooper	FT	P	AA	Bethel	150	76F	12.0		115,164	0	18,260	68,474	201,898	201,898
12-1432	State Trooper	FT	P	AA	Nenana	1DD	76K / L	12.0		86,678	0	23,943	60,284	170,905	170,905
12-1437	State Trooper	FT	P	AA	Bethel	150	76J	12.0		119,484	0	21,472	70,844	211,800	211,800
12-1442	Emergency Service Dispatcher I	FT	A	GP	Fairbanks	103	15B / C	12.0		49,983	0	3,838	37,045	90,866	90,866
12-1443	Criminal Justice Technician I	FT	A	GP	Palmer	99	12L / M	12.0		51,938	0	0	36,337	88,275	88,275
12-1444	Office Assistant II	FT	A	GP	Soldotna	100	10C / D	12.0		36,377	0	0	30,488	66,865	66,865
12-1455	State Trooper	FT	P	AA	Fairbanks	103	76L / M	12.0		88,998	0	19,988	59,670	168,656	168,656
12-1456	Sergeant PS	FT	P	AA	Fairbanks	103	78L / M	12.0		105,032	0	21,466	66,252	192,750	192,750
12-1457	Sergeant PS	FT	P	AA	Fairbanks	103	78L	12.0		105,381	0	19,460	65,629	190,470	190,470
12-1458	Emergency Service Dispatcher I	FT	A	GP	Fairbanks	103	15J / K	12.0		62,613	0	5,934	42,581	111,128	111,128
12-1459	Emergency Service Dispatcher I	FT	A	GP	Ketchikan	99	15O	12.0		73,500	0	7,036	47,087	127,623	127,623
12-1461	Criminal Justice Technician II	FT	A	GP	Anchorage	100	14G / J	12.0		55,561	0	0	37,699	93,260	93,260
12-1462	Criminal Justice Technician I	FT	A	GP	Palmer	99	12L	12.0		51,589	0	0	36,206	87,795	87,795
12-1469	Accounting Tech I	FT	A	GP	Anchorage	100	12E / F	12.0		44,033	0	0	33,366	77,399	77,399
12-1470	Emergency Service Dispatcher I	FT	A	GP	Soldotna	100	15E / F	12.0		54,644	0	5,145	39,289	99,078	99,078
12-1471	Office Assistant II	FT	A	GP	Palmer	200	10E / F	12.0		38,900	0	0	31,436	70,336	70,336
12-1473	Office Assistant II	FT	A	GP	Soldotna	99	10M	12.0		46,633	0	0	34,343	80,976	80,976
12-1476	State Trooper	FT	P	AA	Anchor Point	100	76C / D	12.0		70,038	0	16,463	51,217	137,718	137,718
12-1477	State Trooper	FT	P	AA	Fairbanks	103	76E / F	12.0		79,080	0	18,412	55,349	152,841	152,841
12-1478	State Trooper	FT	P	AA	Fairbanks	103	76E / F	12.0		77,176	0	14,955	53,334	145,465	145,465
12-1479	State Trooper	FT	P	AA	Fairbanks	103	76N	12.0		98,616	0	24,356	64,927	187,899	187,899
12-1480	State Trooper	FT	P	AA	Dillingham	137	76D / E	12.0		98,936	0	17,533	62,482	178,951	178,951
12-1482	State Trooper	FT	P	AA	Fairbanks	103	76F	12.0		79,080	0	18,119	55,239	152,438	152,438
12-1483	State Trooper	FT	P	AA	Fairbanks	103	76B / C	12.0		69,108	0	6,322	47,056	122,486	122,486

Note: If a position is split, an asterisk (*) will appear in the Split/Count column. If the split position is also counted in the component, two asterisks (**) will appear in this column. [No valid job title] appearing in the Job Class Title indicates that the PCN has an invalid class code or invalid range for the class code effective date of this scenario.

Personal Services Expenditure Detail
Department of Public Safety

Scenario: FY2018 Governor (13956)
Component: Alaska State Trooper Detachments (2325)
RDU: Alaska State Troopers (160)

PCN	Job Class Title	Time Status	Retire Code	Barg Unit	Location	Salary Sched	Range / Step	Comp Months	Split / Count	Annual Salaries	COLA	Premium Pay	Annual Benefits	Total Costs	UGF Amount
12-1484	State Trooper	FT	P	AA	Nome	137	76L / M	12.0		122,319	0	19,414	71,088	212,821	212,821
12-1486	State Trooper	FT	P	AA	Wasilla	100	76N / O	12.0		98,628	0	18,500	62,730	179,858	179,858
12-1487	Office Assistant II	FT	A	GP	Fairbanks	103	10C / D	12.0		37,554	0	0	30,930	68,484	68,484
12-1488	Emergency Service Dispatcher I	FT	A	GP	Ketchikan	100	15C / D	12.0		51,707	0	6,684	38,763	97,154	97,154
12-1489	Office Assistant III	FT	A	GP	Ketchikan	99	11L	12.0		50,000	0	0	35,609	85,609	85,609
12-1495	Sergeant PS	FT	P	AA	Seward	100	78J / K	12.0		94,308	0	18,985	61,289	174,582	174,582
12-1499	State Trooper	FT	P	AA	Anchorage	100	76N / O	12.0		95,748	0	15,648	60,576	171,972	171,972
12-1507	Emergency Service Dispatcher I	FT	A	GP	Fairbanks	103	15B	12.0		49,908	0	3,838	37,017	90,763	90,763
12-1508	Emergency Service Dispatcher I	FT	A	GP	Fairbanks	103	15B	12.0		49,908	0	5,709	37,720	93,337	93,337
12-1509	Office Assistant II	FT	A	GP	Fairbanks	99	10L / M	12.0		47,339	0	0	34,609	81,948	81,948
12-1510	Enviro Services Journey II	FT	A	LL	Fairbanks	1EE	60K / L	12.0		44,031	0	0	33,777	77,808	77,808
12-1511	Office Assistant II	FT	A	GP	Fairbanks	103	10C / D	12.0		37,554	0	0	30,930	68,484	68,484
12-1512	Criminal Justice Technician I	FT	A	GP	Nome	137	12C / D	12.0		57,243	0	0	38,331	95,574	95,574
12-1514	Administrative Assistant II	FT	A	SS	Palmer	500	14D / E	12.0		50,738	0	0	37,918	88,656	88,656
12-1520	State Trooper	FT	P	AA	Fairbanks	103	76L	12.0		88,308	0	18,275	58,766	165,349	165,349
12-1527	Criminal Justice Technician I	FT	A	GP	Palmer	100	12K / L	12.0		50,668	0	0	35,860	86,528	86,528
12-1531	Sergeant PS	FT	P	AA	Juneau	105	78M	12.0		112,287	0	18,679	67,701	198,667	198,667
12-1539	Enviro Services Journey II	FT	A	LL	Fairbanks	1EE	60F	12.0		0	0	0	0	0	0
12-1540	Maint Gen Journey	FT	A	LL	Fairbanks	1EE	54E / F	12.0		54,865	0	0	37,850	92,715	92,715
12-1546	Lieutenant, Dept Public Safety	FT	P	SS	Anchorage	100	23C / D	12.0		90,930	0	4,256	54,626	149,812	149,812
12-1547	Aircraft Pilot I	FT	A	GP	Bethel	150	16C / D	12.0		81,063	0	9,705	50,934	141,702	141,702
12-1548	Sergeant PS	FT	P	AA	Kodiak	111	78L	12.0		107,446	0	20,050	66,609	194,105	194,105
12-1550	State Trooper	FT	P	AA	Wasilla	100	76F / J	12.0		79,416	0	17,189	55,016	151,621	151,621
12-1552	State Trooper	FT	P	AA	Fairbanks	103	76L / M	12.0		89,274	0	17,447	58,818	165,539	165,539
12-1554	State Trooper	FT	P	AA	Kotzebue	160	76C / D	12.0		112,080	0	20,846	68,318	201,244	201,244
12-1556	Administrative Assistant I	FT	A	GP	Bethel	99	12L	12.0		79,899	0	0	46,848	126,747	126,747
12-1557	Office Assistant II	FT	A	GP	Nome	99	10O / P	12.0		72,673	0	0	44,132	116,805	116,805
12-1558	State Trooper	FT	P	AA	Soldotna	100	76C / D	12.0		69,608	0	14,153	50,188	133,949	133,949
12-1559	State Trooper	FT	P	AA	Bethel	150	76F	12.0		115,164	0	23,319	70,066	208,549	208,549
12-1561	State Trooper	FT	P	AA	Craig	1EE	76J	11.5	**	82,087	0	12,956	53,649	148,692	148,692
12-1563	Administrative Assistant II	FT	A	SS	Anchorage	500	14D / E	12.0		49,862	0	0	37,589	87,451	87,451
12-1566	State Trooper	FT	P	AA	King Salmon	150	76K / L	12.0		125,508	0	22,007	72,907	220,422	220,422
12-1583	Sergeant PS	FT	P	AA	Glennallen	1FF	78J	12.0		102,672	0	22,805	65,869	191,346	191,346

Note: If a position is split, an asterisk (*) will appear in the Split/Count column. If the split position is also counted in the component, two asterisks (**) will appear in this column. [No valid job title] appearing in the Job Class Title indicates that the PCN has an invalid class code or invalid range for the class code effective date of this scenario.

Personal Services Expenditure Detail
Department of Public Safety

Scenario: FY2018 Governor (13956)
Component: Alaska State Trooper Detachments (2325)
RDU: Alaska State Troopers (160)

PCN	Job Class Title	Time Status	Retire Code	Barg Unit	Location	Salary Sched	Range / Step	Comp Months	Split / Count	Annual Salaries	COLA	Premium Pay	Annual Benefits	Total Costs	UGF Amount
12-1588	State Trooper	FT	P	AA	Craig	1EE	76J	11.5	**	82,087	0	13,956	54,025	150,068	150,068
12-1590	State Trooper	FT	P	AA	Galena	137	76K	12.0		116,617	0	26,142	71,411	214,170	214,170
12-1593	State Trooper	FT	P	AA	Wasilla	100	76B / C	12.0		68,438	0	15,962	50,428	134,828	134,828
12-1596	State Trooper	FT	P	AA	Fairbanks	103	76C / D	12.0		71,696	0	12,880	50,494	135,070	135,070
12-1601	State Trooper	FT	P	AA	Kodiak	111	76K / L	12.0		95,673	0	22,051	62,954	180,678	180,678
12-1604	Office Assistant III	FT	A	GP	Dillingham	137	11B	12.0		51,132	0	0	36,034	87,166	87,166
12-1605	Administrative Assistant I	FT	A	GP	Anchorage	99	12L / M	12.0		52,736	0	0	36,637	89,373	89,373
12-1606	Office Assistant III	FT	A	GP	Kotzebue	160	11E / F	12.0		67,535	0	0	42,200	109,735	109,735
12-1608	Lieutenant, Dept Public Safety	FT	P	SS	Anchorage	99	23N	12.0		125,531	0	4,256	67,474	197,261	197,261
12-1610	State Trooper	FT	P	AA	Fairbanks	103	76L	12.0		90,957	0	15,087	58,564	164,608	164,608
12-1611	State Trooper	FT	P	AA	Soldotna	100	76J / K	12.0		83,676	0	19,421	57,456	160,553	160,553
12-1619	Office Assistant II	FT	A	GP	Palmer	100	10D / E	12.0		38,063	0	0	31,122	69,185	69,185
12-1622	Criminal Justice Technician I	FT	A	GP	Soldotna	99	12L / M	12.0		54,485	0	0	37,295	91,780	91,780
12-1623	Office Assistant III	FT	A	GP	Kenai	100	11G / J	12.0		45,087	0	0	33,762	78,849	78,849
12-1624	Emergency Service Dispatcher I	FT	A	GP	Soldotna	100	15B	12.0		48,456	0	3,727	36,429	88,612	88,612
12-1630	Emergency Serv. Dispatcher II	FT	A	GP	Soldotna	100	16K	12.0		66,636	0	5,125	43,789	115,550	115,550
12-1631	Office Assistant III	FT	A	GP	Tok	100	11C / D	12.0		38,802	0	296	31,511	70,609	70,609
12-1632	Emergency Service Dispatcher I	FT	A	GP	Fairbanks	103	15E / F	12.0		56,015	0	6,338	40,252	102,605	102,605
12-1633	Emergency Service Dispatcher I	FT	A	GP	Fairbanks	103	15D / E	12.0		53,952	0	4,128	38,646	96,726	96,726
12-1635	Office Assistant II	FT	A	GP	Anchorage	100	10E / F	12.0		39,635	0	0	31,713	71,348	71,348
12-1637	Admin Asst III	FT	A	SS	Anchorage	99	15L / M	12.0		66,149	0	0	43,711	109,860	109,860
12-1647	Lieutenant, Dept Public Safety	FT	P	SS	Ketchikan	100	23L / M	12.0		110,472	0	4,256	61,972	176,700	176,700
12-1649	State Trooper Recruit	FT	P	AA	Wasilla	100	74B / C	12.0		59,161	0	13,652	46,072	118,885	118,885
12-1651	State Trooper	FT	P	AA	Palmer	100	76C / D	12.0		69,608	0	14,435	50,294	134,337	134,337
12-1652	State Trooper Recruit	FT	P	AA	Fairbanks	103	74A / B	12.0		58,731	0	14,988	46,413	120,132	120,132
12-1653	State Trooper	FT	P	AA	Fairbanks	103	76C / D	12.0		72,138	0	14,280	51,186	137,604	137,604
12-1654	State Trooper	FT	P	AA	Fairbanks	103	76B / C	12.0		70,599	0	13,878	50,457	134,934	134,934
12-1655	State Trooper	FT	P	AA	Palmer	100	76J	12.0		79,656	0	14,935	54,259	148,850	148,850
12-1656	State Trooper	FT	P	AA	Fairbanks	103	76K / L	12.0		86,180	0	20,574	58,831	165,585	165,585
12-1657	State Trooper	FT	P	AA	Girdwood	100	76M / N	12.0		91,875	0	18,176	60,070	170,121	170,121
12-1658	Sergeant PS	FT	P	AA	Anchor Point	100	78L / M	12.0		105,477	0	17,628	64,977	188,082	188,082
12-1659	State Trooper	FT	P	AA	Palmer	100	76M	12.0		91,632	0	16,167	59,223	167,022	167,022

Note: If a position is split, an asterisk (*) will appear in the Split/Count column. If the split position is also counted in the component, two asterisks (**) will appear in this column. [No valid job title] appearing in the Job Class Title indicates that the PCN has an invalid class code or invalid range for the class code effective date of this scenario.

Personal Services Expenditure Detail
Department of Public Safety

Scenario: FY2018 Governor (13956)
Component: Alaska State Trooper Detachments (2325)
RDU: Alaska State Troopers (160)

PCN	Job Class Title	Time Status	Retire Code	Barg Unit	Location	Salary Sched	Range / Step	Comp Months	Split / Count	Annual Salaries	COLA	Premium Pay	Annual Benefits	Total Costs	UGF Amount
12-1660	Sergeant PS	FT	P	AA	Soldotna	100	78D / E	12.0		83,676	0	17,589	56,767	158,032	158,032
12-1661	State Trooper	FT	P	AA	Tok	115	76D / E	12.0		83,056	0	21,093	57,851	162,000	162,000
12-1663	Sergeant PS	FT	P	AA	Kotzebue	160	78O	12.0		184,210	0	34,099	95,179	313,488	313,488
12-1667	Procurement Spec I	FT	A	GP	Anchorage	100	14J	12.0		56,028	0	1,723	38,522	96,273	96,273
12-1675	Information Officer III	FT	A	SS	Anchorage	99	20O / P	12.0		104,596	0	0	58,163	162,759	162,759
12-1677	Court Services Officer	FT	P	AA	Palmer	100	74J / K	12.0		70,791	0	6,952	47,925	125,668	125,668
12-1678	Court Services Officer	FT	P	AA	Kenai	100	74L	12.0		74,004	0	7,427	49,312	130,743	130,743
12-1679	Court Services Officer	FT	P	AA	Kenai	100	74J / K	12.0		69,501	0	10,452	48,756	128,709	128,709
12-1680	State Trooper	FT	P	AA	Palmer	100	76K	12.0		82,644	0	17,671	56,410	156,725	156,725
12-1681	State Trooper	FT	P	AA	Wasilla	100	76J / K	12.0		82,271	0	14,735	55,166	152,172	152,172
12-1682	State Trooper	FT	P	AA	Wasilla	100	76D / E	12.0		72,220	0	17,308	52,355	141,883	141,883
12-1685	Court Services Officer	FT	P	AA	Palmer	100	74M / N	12.0		79,536	0	15,829	54,549	149,914	149,914
12-1693	Court Services Officer	FT	P	AA	Palmer	100	74P	12.0		85,740	0	8,484	54,121	148,345	148,345
12-1696	State Trooper	FT	P	AA	Palmer	100	76M	12.0		91,625	0	16,666	59,408	167,699	167,699
12-1698	Court Services Officer	FT	P	AA	Fairbanks	103	74B / C	12.0		59,184	0	13,327	45,959	118,470	118,470
12-1699	Court Services Officer	FT	P	AA	Fairbanks	103	74F	12.0		68,256	0	8,409	47,520	124,185	124,185
12-1700	Court Services Officer	FT	P	AA	Fairbanks	103	74K / L	12.0		74,614	0	8,378	49,898	132,890	132,890
12-1701	Court Services Officer	FT	P	AA	Fairbanks	103	74J	12.0		70,812	0	7,638	48,191	126,641	126,641
12-1702	Court Services Officer	FT	P	AA	Barrow	150	74C / D	12.0		90,672	0	8,779	56,085	155,536	155,536
12-1703	Court Services Officer	FT	P	AA	Fairbanks	103	74J / K	12.0		72,028	0	7,638	48,648	128,314	128,314
12-1704	Court Services Officer	FT	P	AA	Juneau	105	74A / B	12.0		58,962	0	5,974	43,111	108,047	108,047
12-1705	State Trooper	FT	P	AA	Juneau	105	76F	12.0		80,628	0	10,349	52,900	143,877	143,877
12-1706	Court Services Officer	FT	P	AA	Ketchikan	1EE	74O	12.0		88,872	0	8,767	55,404	153,043	153,043
12-1708	State Trooper	FT	P	AA	Emmonak	150	76M	12.0		140,104	0	24,439	78,264	242,807	242,807
12-1709	State Trooper	FT	P	AA	Kotzebue	160	76C / D	12.0		113,628	0	19,846	68,490	201,964	201,964
12-1714	Court Services Officer	FT	P	AA	Anchorage	100	74L / M	12.0		76,661	0	11,927	52,002	140,590	140,590
12-1715	State Trooper	FT	P	AA	Palmer	100	76F / J	12.0		77,376	0	20,649	55,549	153,574	153,574
12-1716	Office Assistant II	FT	A	GP	Palmer	100	10L	12.0		45,504	0	0	33,919	79,423	79,423
12-1763	Office Assistant II	FT	A	GP	Anchorage	100	10G	12.0		40,980	0	3,153	33,403	77,536	77,536
12-1771	Office Assistant III	FT	A	GP	Glennallen	100	11J	12.0		45,540	0	0	33,932	79,472	79,472
12-1773	Criminal Justice Technician I	FT	A	GP	Anchorage	100	12E / F	12.0		44,216	0	1,681	34,066	79,963	79,963
12-1774	Office Assistant III	FT	A	GP	Anchorage	100	11C / D	12.0		39,586	0	0	31,694	71,280	71,280
12-1775	Emergency Dispatch Supervisor	FT	A	SS	Fairbanks	103	18O / P	12.0		90,672	0	0	52,929	143,601	143,601
12-1779	Court Services Officer	FT	P	AA	Nome	137	74J / K	12.0		94,335	0	9,246	57,638	161,219	161,219
12-1823	State Trooper Recruit	FT	P	AA	Soldotna	100	74B / C	12.0		59,161	0	16,551	47,162	122,874	122,874
12-1824	State Trooper	FT	P	AA	Soldotna	100	76L	12.0		85,740	0	21,172	58,890	165,802	165,802
12-1829	Office Assistant III	FT	A	GP	Saint Marys	150	11C / D	12.0		57,915	0	0	38,584	96,499	96,499

Note: If a position is split, an asterisk (*) will appear in the Split/Count column. If the split position is also counted in the component, two asterisks (**) will appear in this column. [No valid job title] appearing in the Job Class Title indicates that the PCN has an invalid class code or invalid range for the class code effective date of this scenario.

Personal Services Expenditure Detail
Department of Public Safety

Scenario: FY2018 Governor (13956)
Component: Alaska State Trooper Detachments (2325)
RDU: Alaska State Troopers (160)

PCN	Job Class Title	Time Status	Retire Code	Barg Unit	Location	Salary Sched	Range / Step	Comp Months	Split / Count	Annual Salaries	COLA	Premium Pay	Annual Benefits	Total Costs	UGF Amount
12-1841	State Trooper	FT	P	AA	Palmer	100	76M / N	12.0		91,597	0	24,512	62,347	178,456	178,456
12-1842	State Trooper	FT	P	AA	Juneau	105	76L	11.5	**	88,873	0	11,799	55,765	156,437	156,437
12-1843	State Trooper	FT	P	AA	Soldotna	100	76C / D	12.0		71,006	0	15,783	51,326	138,115	138,115
12-1844	State Trooper	FT	P	AA	Dillingham	137	76J / K	12.0		109,640	0	19,942	67,266	196,848	196,848
12-1845	State Trooper	FT	P	AA	Delta Junction	115	76L	12.0		98,604	0	19,989	63,281	181,874	181,874
12-1877	State Trooper	FT	P	AA	Wasilla	100	76F	12.0		79,079	0	17,137	54,869	151,085	151,085
12-1879	State Trooper	FT	P	AA	Emmonak	150	76M	12.0		145,367	0	32,878	82,575	260,820	260,820
12-1883	State Trooper	FT	P	AA	Unalakleet	150	76F / J	12.0		120,102	0	21,581	71,073	212,756	212,756
12-1884	State Trooper	FT	P	AA	Emmonak	150	76M	12.0		145,367	0	24,566	79,960	249,893	249,893
12-1886	State Trooper	FT	P	AA	Aniak	150	76J / K	12.0		108,001	0	16,958	65,674	190,633	190,633
12-1888	State Trooper	FT	P	AA	Soldotna	100	76L	12.0		85,740	0	17,957	57,681	161,378	161,378
12-1889	Criminal Justice Technician I	FT	A	GP	Anchorage	99	12O / P	12.0		0	0	0	0	0	0
12-1891	Analyst/Programmer II	FT	A	GP	Anchorage	100	16D / E	12.0		57,268	0	0	38,341	95,609	95,609
12-1894	Office Assistant II	FT	A	GP	Palmer	99	10N	12.0		46,633	0	0	34,343	80,976	80,976
12-1895	Office Assistant III	FT	A	GP	Cantwell	100	11C / D	12.0		38,802	0	0	31,399	70,201	70,201
12-1900	Sergeant PS	FT	P	AA	Palmer	100	78O	12.0		115,088	0	17,960	68,356	201,404	201,404
12-1903	Sergeant PS	FT	P	AA	Ketchikan	1EE	78K / L	12.0		106,227	0	19,885	66,107	192,219	192,219
12-1904	State Trooper	FT	P	AA	Dillingham	137	76C / D	12.0		95,952	0	19,212	61,992	177,156	177,156
12-1905	State Trooper	FT	P	AA	Nome	137	76M	12.0		121,872	0	21,957	71,748	215,577	215,577
12-1906	State Trooper	FT	P	AA	Kotzebue	160	76L / M	12.0		149,313	0	25,343	81,446	256,102	256,102
12-1907	State Trooper	FT	P	AA	Bethel	150	76E / F	12.0		98,207	0	4,456	57,293	159,956	159,956
12-1908	State Trooper	FT	P	AA	Bethel	150	76D / E	12.0		108,328	0	18,487	66,372	193,187	193,187
12-1909	State Trooper	FT	P	AA	Saint Marys	150	76F / J	12.0		115,344	0	20,960	69,380	205,684	205,684
12-1910	Court Services Officer	FT	P	AA	Bethel	150	74C / D	12.0		90,533	0	8,779	56,033	155,345	155,345
12-1911	State Trooper	FT	P	AA	Togiak	150	76C / D	12.0		105,060	0	16,527	64,406	185,993	185,993
12-1915	Court Services Officer	FT	P	AA	Anchor Point	100	74C / D	12.0		60,358	0	6,105	43,685	110,148	110,148
12-1916	Court Services Officer	FT	P	AA	Kenai	100	74J / K	12.0		68,856	0	6,952	47,198	123,006	123,006
12-1919	Captain, Dept of Public Safety	FT	P	SS	Anchorage	99	24R	12.0		0	0	0	0	0	0
12-1923	State Trooper	FT	P	AA	Togiak	137	76A	12.0		87,504	0	9,644	55,220	152,368	152,368
12-1925	State Trooper	FT	P	AA	Wasilla	100	76F / J	12.0		79,416	0	18,729	55,594	153,739	153,739
12-1926	Sergeant PS	FT	P	AA	Fairbanks	103	78J	12.0		95,052	0	21,662	62,575	179,289	179,289
12-1927	State Trooper	FT	P	AA	Anchor Point	100	76F	12.0		76,776	0	16,270	53,678	146,724	146,724
12-1928	State Trooper	FT	P	AA	Delta Junction	115	76O	12.0		110,124	0	17,519	66,656	194,299	194,299
12-1929	State Trooper	FT	P	AA	Seward	100	76A / B	12.0		65,064	0	14,505	48,612	128,181	128,181
12-1932	Court Services Officer	FT	P	AA	Fairbanks	103	74K / L	12.0		76,109	0	8,378	50,460	134,947	134,947

Note: If a position is split, an asterisk (*) will appear in the Split/Count column. If the split position is also counted in the component, two asterisks (**) will appear in this column. [No valid job title] appearing in the Job Class Title indicates that the PCN has an invalid class code or invalid range for the class code effective date of this scenario.

Personal Services Expenditure Detail
Department of Public Safety

Scenario: FY2018 Governor (13956)
Component: Alaska State Trooper Detachments (2325)
RDU: Alaska State Troopers (160)

PCN	Job Class Title	Time Status	Retire Code	Barg Unit	Location	Salary Sched	Range / Step	Comp Months	Split / Count	Annual Salaries	COLA	Premium Pay	Annual Benefits	Total Costs	UGF Amount
12-1933	Court Services Officer	FT	P	AA	Palmer	100	74L	12.0		74,004	0	7,427	49,312	130,743	130,743
12-1944	Court Services Officer	FT	P	AA	Palmer	100	74L	12.0		74,004	0	8,427	49,688	132,119	132,119
12-1945	Court Services Officer	FT	P	AA	Kenai	100	74M	12.0		76,776	0	8,676	50,823	136,275	136,275
12-1946	Court Services Officer	FT	P	AA	Fairbanks	103	74F	12.0		68,256	0	7,975	47,357	123,588	123,588
12-1947	Court Services Officer	FT	P	AA	Juneau	105	74L	12.0		77,712	0	7,761	50,831	136,304	136,304
12-1948	Court Services Officer	FT	P	AA	Fairbanks	103	74J / K	12.0		72,912	0	8,138	49,168	130,218	130,218
12-1949	Court Services Officer	FT	P	AA	Palmer	100	74K	12.0		71,328	0	7,185	48,215	126,728	126,728
12-1951	Office Assistant II	FT	A	GP	Palmer	100	10J / K	12.0		43,728	0	0	33,251	76,979	76,979
12-1965	Court Services Officer	FT	P	AA	Bethel	150	74B / C	12.0		89,004	0	756	52,443	142,203	142,203
12-1971	Court Services Officer	FT	P	AA	Bethel	150	74P / Q	12.0		129,609	0	12,849	71,316	213,774	213,774
12-1972	Program Coordinator I	FT	A	GP	Anchorage	100	18D / E	12.0		65,160	0	1,480	41,864	108,504	108,504
12-1997	Sergeant PS	FT	P	AA	Bethel	150	78O	12.0		150,122	0	22,132	80,690	252,944	252,944
12-2000	Telecomm Planner	FT	A	GP	Anchorage	100	21J	9.0	**	67,689	0	0	38,055	105,744	105,744
12-2002	State Trooper	FT	P	AA	Selawik	160	76Q	12.0		173,191	0	13,998	85,389	272,578	272,578
12-2008	State Trooper	FT	P	AA	Selawik	160	76Q / R	12.0		179,686	0	33,514	93,572	306,772	306,772
12-2036	Aircraft Pilot II	FT	A	GP	Fairbanks	103	19A / B	12.0		65,036	0	8,411	44,423	117,870	117,870
12-2037	State Trooper	FT	P	AA	Bethel	150	76D	12.0		106,992	0	1,956	59,655	168,603	168,603
12-2044	State Trooper	FT	P	AA	Fairbanks	103	76A / B	12.0		67,020	0	12,084	48,437	127,541	127,541
12-2045	State Trooper	FT	P	AA	Fairbanks	103	76C / D	12.0		72,691	0	15,778	51,957	140,426	140,426
12-2046	State Trooper	FT	P	AA	Fairbanks	103	76J	12.0		82,044	0	15,855	55,502	153,401	153,401
12-2047	State Trooper Recruit	FT	P	AA	Fairbanks	103	74A / B	12.0		58,731	0	15,570	46,631	120,932	120,932
12-2048	State Trooper	FT	P	AA	Fairbanks	103	76D / E	12.0		75,879	0	17,588	53,836	147,303	147,303
12-2049	State Trooper	FT	P	AA	Soldotna	100	76E / F	12.0		76,776	0	14,110	52,866	143,752	143,752
12-2050	State Trooper	FT	P	AA	Soldotna	100	76C / D	12.0		71,006	0	14,224	50,740	135,970	135,970
12-2051	State Trooper	FT	P	AA	Soldotna	100	76D / E	12.0		73,670	0	14,579	51,875	140,124	140,124
12-2052	State Trooper	FT	P	AA	Wasilla	100	76K	12.0		82,644	0	18,737	56,811	158,192	158,192
12-2053	State Trooper	FT	P	AA	Wasilla	100	76C / D	12.0		69,608	0	12,435	49,542	131,585	131,585
12-2054	State Trooper	FT	P	AA	Wasilla	100	76A / B	12.0		65,264	0	14,348	48,628	128,240	128,240
12-2055	State Trooper Recruit	FT	P	AA	Palmer	100	74B / C	12.0		59,161	0	15,351	46,711	121,223	121,223
12-2056	State Trooper	FT	P	AA	Palmer	100	76J	12.0		79,656	0	17,867	55,361	152,884	152,884
12-2057	State Trooper	FT	P	AA	Hooper Bay	160	76M / N	12.0		140,979	0	20,939	77,439	239,357	239,357
12-2058	State Trooper	FT	P	AA	Hooper Bay	160	76O	12.0		150,805	0	4,256	75,281	230,342	230,342
12-3049	Mail Svcs Courier	FT	A	GG	Anchorage	99	9O	12.0		47,406	0	912	34,977	83,295	0
12-3053	Office Assistant III	FT	A	GP	Kodiak	111	11F / G	12.0		47,656	0	0	34,728	82,384	82,384
12-3085	Major, Dept of Public Safety	FT	P	SS	Anchorage	99	25O	12.0		158,580	0	756	76,770	236,106	236,106
12-3090	Aircraft Pilot I	FT	A	GP	Kotzebue	160	16E / F	12.0		94,388	0	10,620	56,286	161,294	161,294
12-3101	Captain, Dept of Public Safety	FT	P	SS	Anchorage	99	24P	12.0		139,136	0	4,256	71,754	215,146	215,146
12-3107	Court Services Officer	FT	P	AA	Ketchikan	1EE	74L / M	12.0		82,436	0	7,929	52,670	143,035	143,035

Note: If a position is split, an asterisk (*) will appear in the Split/Count column. If the split position is also counted in the component, two asterisks (**) will appear in this column. [No valid job title] appearing in the Job Class Title indicates that the PCN has an invalid class code or invalid range for the class code effective date of this scenario.

Personal Services Expenditure Detail
Department of Public Safety

Scenario: FY2018 Governor (13956)
Component: Alaska State Trooper Detachments (2325)
RDU: Alaska State Troopers (160)

PCN	Job Class Title	Time Status	Retire Code	Barg Unit	Location	Salary Sched	Range / Step	Comp Months	Split / Count	Annual Salaries	COLA	Premium Pay	Annual Benefits	Total Costs	UGF Amount
12-3829	Court Services Officer	FT	P	AA	Palmer	100	74L	12.0		74,004	0	8,427	49,688	132,119	132,119
12-3854	Office Assistant III	FT	A	GP	Craig	100	11J / K	12.0		45,786	0	0	34,025	79,811	79,811
12-4204	Court Services Officer	FT	P	AA	Kenai	100	74E / F	12.0		64,264	0	6,512	45,306	116,082	116,082
12-4222	Forensic Tech II	FT	A	GP	Fairbanks	103	15J / K	12.0		62,446	0	3,855	41,736	108,037	108,037
12-4229	Forensic Tech II	FT	A	GP	Palmer	100	15A / B	12.0		47,610	0	0	34,710	82,320	82,320
12-4408	Court Services Officer	FT	P	AA	Fairbanks	103	74J / K	12.0		71,144	0	7,138	48,128	126,410	126,410
12-4411	Admin Investigator II - DPS	FT	A	SS	Anchorage	100	22J	12.0		95,544	0	0	54,761	150,305	0
12-5310	Emergency Service Dispatcher I	FT	A	GP	Fairbanks	103	15F / G	12.0		58,646	0	4,425	40,522	103,593	103,593
12-N09007	State Trooper	NP	N	AA	Anchorage	100	76A	12.0		63,864	0	756	8,556	73,176	73,176
12-N12006	State Trooper	NP	N	AA	Anchorage	100	76A	12.0		63,864	0	756	8,556	73,176	73,176

Total Positions:	363	New	Deleted	Total Salary Costs:	30,307,864
Full Time Positions:	363	0	3	Total COLA:	0
Part Time Positions:	0	0	0	Total Premium Pay:	4,221,644
Non Permanent Positions:	2	0	0	Total Benefits:	19,458,605
Positions in Component:	365	0	3	Total Pre-Vacancy:	53,988,113
				Minus Vacancy Adjustment of 6.31%:	(3,405,913)
				Total Post-Vacancy:	50,582,200
				Plus Lump Sum Premium Pay:	530,000
				Personal Services Line 100:	51,112,200

PCN Funding Sources:	Pre-Vacancy	Post-Vacancy	Percent
1004 General Fund Receipts	53,581,709	50,201,435	99.25%
1007 Interagency Receipts	354,406	332,048	0.66%
1055 Interagency/Oil & Hazardous Waste	51,998	48,717	0.10%
Total PCN Funding:	53,988,113	50,582,200	100.00%

Lump Sum Funding Sources:	Amount	Percent
1055 General Fund Receipts	530,000	100.00%
Total Lump Sum Funding:	530,000	100.00%

Note: If a position is split, an asterisk (*) will appear in the Split/Count column. If the split position is also counted in the component, two asterisks (**) will appear in this column. [No valid job title] appearing in the Job Class Title indicates that the PCN has an invalid class code or invalid range for the class code effective date of this scenario.

Line Item Detail (1676)
Department of Public Safety
Travel

Component: Alaska State Trooper Detachments (2325)

Line Number	Line Name		FY2016 Actuals	FY2017 Management Plan	FY2018 Governor
2000	Travel		1,477.0	1,785.2	1,310.2
Object Class	Servicing Agency	Explanation	FY2016 Actuals	FY2017 Management Plan	FY2018 Governor
2000 Travel Detail Totals			1,477.0	1,785.2	1,310.2
2000	In-State Employee Travel	In-state travel for routine patrol, post visits, training courses for officers, remote area patrol, investigations, special field assignments, transportation for witness appearances, and expert testimony in court.	594.6	950.0	535.2
2001	In-State Non-Employee Travel	In-state non-employee travel for routine patrol, post visits, training courses for officers, remote area patrol, investigations, special field assignments, transportation for witness appearances, and expert testimony in court.	187.4	0.0	0.0
2002	Out of State Employee Travel	Out-of-state travel primarily for training courses, conferences, and seminars for law enforcement officers. Specific events include polygraph use training, FBI National Academy, Southern Police Institute, homicide school, intoximeter instruction, radar instruction, International Chiefs of Police conference, and other similar law enforcement seminars. Non-employee travel includes transportation costs for witness appearances, expert testimony, and trainers' travel.	30.4	75.0	50.0
2005	Moving Costs	Moving costs for the entire division of	581.1	760.2	725.0

Line Item Detail (1676)
Department of Public Safety
Travel

Component: Alaska State Trooper Detachments (2325)

Object Class	Servicing Agency	Explanation	FY2016 Actuals	FY2017 Management Plan	FY2018 Governor
2000 Travel Detail Totals			1,477.0	1,785.2	1,310.2
		Alaska State Troopers are budgeted in this component. This includes shipment of household goods, per diem, airfare, and temporary lodging costs for transfers of commissioned officers, new recruits and their families.			
2006	Other Travel Costs	Other travel related costs.	83.5	0.0	0.0

Line Item Detail (1676)
Department of Public Safety
Services

Component: Alaska State Trooper Detachments (2325)

Line Number	Line Name		FY2016 Actuals	FY2017 Management Plan	FY2018 Governor
3000	Services		11,998.2	11,291.2	11,567.0
Object Class	Servicing Agency	Explanation	FY2016 Actuals	FY2017 Management Plan	FY2018 Governor
3000 Services Detail Totals			11,998.2	11,291.2	11,567.0
3000	Education Services	Registration/tuition for employee development seminars, required law enforcement training, rifle range fees to meet yearly qualifications, and membership in law enforcement organizations.	81.5	80.0	80.0
3001	Financial Services	Interest income, penalties and fines.	65.2	50.0	50.0
3002	Legal and Judicial Services	Transcription services and case costs.	4.4	4.5	4.5
3003	Information Technology	Contracts with information technology firms to assist in data collection/reporting and software maintenance. Consulting services and software licenses for technology projects. Microsoft Exchange & ARMS Maintenance Agreement.	218.4	200.0	200.0
3004	Telecommunications	Long distance, local, cellular, basic equipment purchases, and satellite phones.	542.6	545.0	545.0
3005	Health Services	Medical services for employees (physicals/fit for duty exams) and non-employees (while in custody). Medical costs including sexual assault exams; emergency room care; psychological evaluations and drug screening for trooper and court service officer recruits; and biannual fitness-for-duty physicals for law	544.7	500.0	500.0

Line Item Detail (1676)
Department of Public Safety
Services

Component: Alaska State Trooper Detachments (2325)

Object Class	Servicing Agency	Explanation	FY2016 Actuals	FY2017 Management Plan	FY2018 Governor
3000 Services Detail Totals			11,998.2	11,291.2	11,567.0
		enforcement per unit contracts.			
3006	Delivery Services	Postage, freight, and courier service.	68.4	68.5	68.5
3007	Advertising and Promotions	Advertising for recruitment job fair newspaper ads. Promotional items for recruitment efforts and employee recognition.	17.8	17.8	17.8
3008	Utilities	Utility costs for trooper posts, storage, and offices including natural gas, heating oil, electricity, water and sewer, and waste disposal. Including other disposal and shredding services.	299.5	299.5	299.5
3009	Structure/Infrastructure/Land	Janitorial services, snow removal, lawn care, rentals and leases for copiers, office equipment, driving under the influence-related (DUI) towing services, DUI storage lots, evidence storage, and room rentals for training officers.	394.5	394.5	394.5
3010	Equipment/Machinery	Repair and maintenance of law enforcement equipment, marine equipment, snow machines and four-wheelers, computers and copiers, office and phone, radio and law enforcement equipment. Rental and leases for office equipment, law enforcement equipment, aircraft, and vehicles.	191.5	191.5	191.5
3011	Other Services	Contracts for services such as dispatch, prisoner transport, guard hires, clerical support with local police departments. Also includes printing, copier services, honorariums for presenters/trainers, interpreter services, K9 units, and	1,991.2	1,991.2	1,991.2

Line Item Detail (1676)
Department of Public Safety
Services

Component: Alaska State Trooper Detachments (2325)

Object Class	Servicing Agency	Explanation	FY2016 Actuals	FY2017 Management Plan	FY2018 Governor
3000 Services Detail Totals			11,998.2	11,291.2	11,567.0
		commissioned sales for the State Travel Office.			
3017	Inter-Agency Information Technology Non-Telecommunications	Admin - Department-wide Non-telecommunication (mainframe, computer support, sponsored agencies, and PVN).	368.1	360.8	360.8
3017	Inter-Agency Information Technology Non-Telecommunications	PubSaf - Statewide Info Technology Svcs (3050) Non-telecommunications (LAN/WAN & APSIN).	646.5	646.5	646.5
3018	Inter-Agency Information Technology Telecommunications	Admin - Department-wide Non-telecommunications (LAN/WAN & APSIN).	482.0	399.4	399.4
3018	Inter-Agency Information Technology Telecommunications	Courts - Department-wide RSA with Alaska Court Systems (ACS) for Reoccurring connection costs for the Video Arraignment system.	0.0	16.1	16.1
3018	Inter-Agency Information Technology Telecommunications	Trans - Department-wide RSA with DOTPF for Two-Way Radio system Repairs and Maintenance.	0.0	55.0	55.0
3020	Inter-Agency Building Maintenance	Trans - Department-wide DPS Tudor Complex building and yard maintenance. RSAs with ADOTPF for maintenance of state-owned rural trooper housing units (ADOTPF's Central, Northern, and Southeast Regions).	99.0	99.0	99.0
3021	Inter-Agency Mail	Admin - Department-wide Central Mail services.	27.6	15.6	15.6
3021	Inter-Agency Mail	PubSaf - AST Detachments (2325) DPS HQ mailroom services.	0.0	12.0	12.0
3022	Inter-Agency Human Resources	Admin - Department-wide HR Personnel support.	88.0	88.0	88.0
3023	Inter-Agency Building Leases	Admin - Department-wide Lease costs for AST facilities and lease administration costs charged by DOA.	1,016.9	850.9	850.9
3023	Inter-Agency Building Leases	M&VA - Department-wide RSAs with DMVA, Army Guard Facilities Maintenance, for lease costs, utilities, and maintenance services for the Nome and Kotzebue Armories, Emmonak and Selawik	1.0	167.0	100.0

Line Item Detail (1676)
Department of Public Safety
Services

Component: Alaska State Trooper Detachments (2325)

Object Class	Servicing Agency	Explanation	FY2016 Actuals	FY2017 Management Plan	FY2018 Governor
3000 Services Detail Totals			11,998.2	11,291.2	11,567.0
		Posts, and for Nenana sub lease.			
3023	Inter-Agency Building Leases	Trans - Department-wide	10.7	10.7	10.7
		Reimbursement to DOTPF for the costs of airport leases and tie-downs.			
3024	Inter-Agency Legal	Law - Department-wide	107.6	107.6	107.6
3026	Inter-Agency Insurance	Admin - Department-wide	103.9	30.9	30.9
		RSA for payment of Tier IV Survivor Benefits.			
3026	Inter-Agency Insurance	Admin - Department-wide	0.0	73.0	73.0
		Risk Management property and overhead insurance.			
3027	Inter-Agency Financial	Admin - Department-wide	31.8	31.8	31.8
		AKPAY/ ALDER/ IRIS financial support.			
3028	Inter-Agency Americans with Disabilities Act Compliance	Admin - Department-wide	0.8	0.8	0.8
		Americans with Disabilities Act (ADA) allocation for services.			
3029	Inter-Agency Education/Training	Admin - Department-wide	59.0	0.3	0.3
		DOA Division of personnel and Division of Finance training.			
3029	Inter-Agency Education/Training	PubSaf - Training Academy (524)	0.0	8.6	8.6
		RSA with DPS Training Academy for the Alaska Law Enforcement Training (ALET) academy.			
3029	Inter-Agency Education/Training	Univ - Department-wide	0.0	58.7	10.0
		RSA with the University of Alaska Southeast for the Alaska Law Enforcement Training (ALET) academy.			
3036	Inter-Agency Safety	Correct - Department-wide	10.5	7.0	7.0
		RSA with Dept. of Corrections for the reimbursement of staff time at Goose Creek Correctional Facility in support of video court hearings.			
3036	Inter-Agency Safety	Labor - Department-wide	0.4	0.4	0.4
		Boiler inspection services, by the Dept. of Labor, for AST Posts.			
3036	Inter-Agency Safety	M&VA - Department-wide	0.0	8.0	8.0
		RSA with Division of Motor Vehicles for the Kotzebue Clerk Job Sharing services.			
3036	Inter-Agency Safety	Trans - Department-wide	8.6	8.6	8.6
		Radar recertification RSA with			

Line Item Detail (1676)
Department of Public Safety
Services

Component: Alaska State Trooper Detachments (2325)

Object Class		Servicing Agency	Explanation	FY2016 Actuals	FY2017 Management Plan	FY2018 Governor
			3000 Services Detail Totals	11,998.2	11,291.2	11,567.0
			Division of Measurement Standards.			
3036	Inter-Agency Safety	Trans - Department-wide	Airport badge services.	0.0	1.0	1.0
3037	State Equipment Fleet	Trans - Department-wide	State Equipment Fleet costs, such as, fuel, fixed costs for asset maintenance, maintenance and repair services not included as a fixed asset cost, fixed cost services for equipment replacement, unallowable A87 expenses, and repairs and maintenance services due to accident damage.	3,878.9	3,253.8	3,645.3
3038	Inter-Agency Management/Consulting	PubSaf - Administrative Services (525)	DPS Admin Services cost allocation.	484.2	484.2	484.2
3038	Inter-Agency Management/Consulting	PubSaf - AST Detachments (2325)	DPS Office of Professional Services cost allocation.	112.8	112.8	112.8
3038	Inter-Agency Management/Consulting	PubSaf - Commissioner's Office (523)	DPS Commissioner's Office cost allocation.	40.2	40.2	40.2

Line Item Detail (1676)
Department of Public Safety
Commodities

Component: Alaska State Trooper Detachments (2325)

Line Number	Line Name		FY2016 Actuals	FY2017 Management Plan	FY2018 Governor
4000	Commodities		807.6	985.8	900.0
Object Class	Servicing Agency	Explanation	FY2016 Actuals	FY2017 Management Plan	FY2018 Governor
4000 Commodities Detail Totals			807.6	985.8	900.0
4000	Business	Business, office, photographic, computer supplies and educational subscriptions for law enforcement manuals.	164.1	300.0	205.0
4002	Household/Institutional	Clothing, uniforms, cleaning, food and non-food supplies. Such as uniforms for commissioned officers, accident victim blankets, evidence bags, body bags, latex examination gloves, law enforcement forms, and drug testing kits.	41.2	65.8	50.0
4003	Scientific and Medical	Laboratory, scientific, and medical supplies.	10.0	20.0	20.0
4004	Safety	Law enforcement supplies, communications, ammunition, gun cleaning supplies, protective vests, first aid supplies, road flares, and other safety supplies.	554.4	550.0	585.0
4006	Signs and Markers	Parts and supplies used to repair and maintain equipment. Minor maintenance and repair supplies for state facilities including signs, plumbing and electrical supplies, janitorial supplies, and paint. Fuel for airplanes, helicopters, boats, snow machines, and all-terrain vehicles.	17.8	20.0	20.0
4020	Equipment Fuel	Equipment fuel.	20.1	30.0	20.0

Line Item Detail (1676)
Department of Public Safety
Capital Outlay

Component: Alaska State Trooper Detachments (2325)

Line Number	Line Name		FY2016 Actuals	FY2017 Management Plan	FY2018 Governor
5000	Capital Outlay		17.8	263.7	48.7
Object Class	Servicing Agency	Explanation	FY2016 Actuals	FY2017 Management Plan	FY2018 Governor
5000 Capital Outlay Detail Totals			17.8	263.7	48.7
5002	Structures and Infrastructure	Services for structures, infrastructure and land, not part of acquisition costs or betterment of a capital asset.	7.7	10.0	5.0
5004	Equipment	Law enforcement safety equipment such as diving equipment, ammunition, Tasers, K9 equipment, transportation equipment, communication and IT equipment, and undercover surveillance equipment used in support of law enforcement activities.	10.1	253.7	43.7

Revenue Detail (1681)
Department of Public Safety

Component: Alaska State Trooper Detachments (2325)

Revenue Type (OMB Fund Code) Revenue Source	Component	Comment	FY2016 Actuals	FY2017 Management Plan	FY2018 Governor
5005 GF/Prgm (1005 GF/Prgm)			17.8	275.0	275.0
5103 Program Receipts - Charges for Services		Collection of fees for Alaska Records Management System and Fines, Forfeitures, Judgments and settlements, and collection of public records fees.	17.8	275.0	275.0
5007 I/A Rcpts (1007 I/A Rcpts)			1,155.7	712.0	714.8
5301 Inter-Agency Receipts		Unallocated IA Receipt authority. Historically DPS AST Detachments receives request for services from other agencies for dispatch services, patrols, overtime enforcement activities, and misc. training, and other services.	858.4	262.4	261.4
5301 Inter-Agency Receipts	Correct - Department-wide	FY16 Actuals is unbudgeted RSAs using excess budgeted IA. Revenue for K9 academy instruction for a DOC K9/handler team. One time Item FY16.	4.2	0.0	0.0
5301 Inter-Agency Receipts	NatRes - Department-wide	DPS Inter-agency RSA for overtime enforcement of the Knik River Public Use Area (AST & AWT).	0.0	95.0	95.0
5301 Inter-Agency Receipts	PubSaf - Administrative Services (525)	Unallocated Interagency Authority to Support RSA Services.	10.1	0.0	0.0
5301 Inter-Agency Receipts	PubSaf - AK Bureau of Judicial Svcs (2885)	Unallocated Interagency Authority to Support RSA Services.	10.8	0.0	0.0
5301 Inter-Agency Receipts	PubSaf - AK Fire Standards Council (2428)	Unallocated Interagency Authority to Support RSA Services.	0.6	0.0	0.0
5301 Inter-Agency Receipts	PubSaf - AK Police Standards Council (519)	Unallocated Interagency Authority to Support RSA Services.	1.2	0.0	0.0
5301 Inter-Agency Receipts	PubSaf - AK W-life Troopers Aircraft Sect (492)	Unallocated Interagency Authority to Support RSA Services.	4.3	0.0	0.0
5301 Inter-Agency Receipts	PubSaf - AK W-life Troopers Marine Enforc (493)	Unallocated Interagency Authority to Support RSA Services.	4.0	0.0	0.0

Revenue Detail (1681)
Department of Public Safety

Component: Alaska State Trooper Detachments (2325)

Revenue Type (OMB Fund Code) Revenue Source	Component	Comment	FY2016 Actuals	FY2017 Management Plan	FY2018 Governor
5301 Inter-Agency Receipts	PubSaf - Alaska Bureau of Highway Patrol (3073)	Unallocated Interagency Authority to Support RSA Services.	2.5	0.0	0.0
5301 Inter-Agency Receipts	PubSaf - Alaska Bureau of Investigation (2744)	Unallocated Interagency Authority to Support RSA Services.	14.1	0.0	0.0
5301 Inter-Agency Receipts	PubSaf - Alaska Wildlife Troopers (2746)	Unallocated Interagency Authority to Support RSA Services.	37.8	0.0	0.0
5301 Inter-Agency Receipts	PubSaf - AST Detachments (2325)	Unallocated Interagency Authority to Support RSA Services.	112.8	0.0	0.0
5301 Inter-Agency Receipts	PubSaf - Commissioner's Office (523)	Unallocated Interagency Authority to Support RSA Services.	1.5	0.0	0.0
5301 Inter-Agency Receipts	PubSaf - Domestic Viol/Sexual Assault (521)	Unallocated Interagency Authority to Support RSA Services.	2.8	0.0	0.0
5301 Inter-Agency Receipts	PubSaf - Fire and Life Safety (3051)	Unallocated Interagency Authority to Support RSA Services.	8.6	0.0	0.0
5301 Inter-Agency Receipts	PubSaf - Laboratory Services (527)	Unallocated Interagency Authority to Support RSA Services.	12.3	0.0	0.0
5301 Inter-Agency Receipts	PubSaf - Special Projects (1001)	Unallocated Interagency Authority to Support RSA Services.	0.3	0.0	0.0
5301 Inter-Agency Receipts	PubSaf - Statewide Info Technology Svcs (3050)	Unallocated Interagency Authority to Support RSA Services.	20.6	0.0	0.0
5301 Inter-Agency Receipts	PubSaf - SW Drug and Alcohol Enforcement (3052)	Unallocated Interagency Authority to Support RSA Services.	12.9	0.0	0.0
5301 Inter-Agency Receipts	PubSaf - Training Academy (524)	Unallocated Interagency Authority to Support RSA Services.	3.1	0.0	0.0
5301 Inter-Agency Receipts	PubSaf - Village Public Safety Officer Pg (3047)	Unallocated Interagency Authority to Support RSA Services.	1.8	0.0	0.0
5301 Inter-Agency Receipts	Rev - Department-wide	DPS Inter-agency RSA for ARMS Case Management system.	0.0	9.6	9.6
5301 Inter-Agency Receipts		DPS Intra-agency RSA for Office of Professional Standards (OPS) cost allocation.	0.0	263.0	265.0
5301 Inter-Agency Receipts		DPS Intra-agency RSA for Mailroom Support cost allocation.	0.0	82.0	83.8
5301 Inter-Agency Receipts		Unbudgeted RSAs using excess budgeted IA authorization.	31.0	0.0	0.0
5055 IA/OIL HAZ (1055 IA/OIL HAZ)			0.0	50.3	50.6

Revenue Detail (1681)
Department of Public Safety

Component: Alaska State Trooper Detachments (2325)

Revenue Type (OMB Fund Code)	Component	Comment	FY2016 Actuals	FY2017 Management Plan	FY2018 Governor
Revenue Source					
5391 Oil and Hazardous Waste Inter-Agency		Unallocated Oil and Hazardous Waste funding. Prior to FY16 funding was for an RSA from Department of Environmental Conservation (DEC) for dispatch services to support the oil spill hotline. These services were terminated by DEC in 2016.	0.0	50.3	50.6
5061 CIP Rcpts (1061 CIP Rcpts)			47.3	288.3	213.3
5351 Capital Improvement Project Inter-Agency		Unallocated CIP Receipt Authority.	47.3	225.3	150.3
5351 Capital Improvement Project Inter-Agency	Trans - Department-wide	CIP RSA for 511 Management Center (511 MC) Reporting System with DOTPF. FY16 Actuals was short billed to DOTPF, should have been \$63.0.	0.0	63.0	63.0
6004 Gen Fund (1004 Gen Fund)			141.7	0.0	0.0
6003 General Fund Pblc Prtctn - Miscellaneous Fines/Forfeitures		Miscellaneous fines and forfeitures.	91.3	0.0	0.0
6004 General Fund Public Protection - Judgement Settlemnt		Judgement Settlement.	28.2	0.0	0.0
6010 General Fnd Gnrl Gov - Chrgs for Svcs Sale of Pblc Docs/Cert		Charges for services sale of public documents and certifications.	0.2	0.0	0.0
6044 General Fund - Jury & Worker's Compensation Recovery		Jury and Worker's Compensation Recovery.	0.5	0.0	0.0
6046 General Fund - Prior Year Reimbursement Recovery		Prior Year Reimbursement Recovery.	21.4	0.0	0.0
6047 General Fund - Miscellaneous		Miscellaneous general fund expense.	0.1	0.0	0.0

Inter-Agency Services (1682)
Department of Public Safety

Component: Alaska State Trooper Detachments (2325)

	FY2016 Actuals	FY2017 Management Plan	FY2018 Governor
Component Totals	7,578.5	6,948.7	7,224.5
With Department of Administration	2,178.1	1,851.5	1,851.5
With Department of Public Safety	1,283.7	1,304.3	1,304.3
With Judiciary	0.0	16.1	16.1
With Department of Transportation/Public Facilities	3,997.2	3,428.1	3,819.6
With Department of Military and Veterans Affairs	1.0	175.0	108.0
With Department of Law	107.6	107.6	107.6
With University of Alaska	0.0	58.7	10.0
With Department of Corrections	10.5	7.0	7.0
With Department of Labor and Workforce Development	0.4	0.4	0.4

Object Class	Servicing Agency	Explanation	FY2016 Actuals	FY2017 Management Plan	FY2018 Governor
3017 Inter-Agency Information Technology Non-Telecommunications	Admin - Department-wide	Non-telecommunication (mainframe, computer support, sponsored agencies, and PVN).	368.1	360.8	360.8
3017 Inter-Agency Information Technology Non-Telecommunications	PubSaf - Statewide Info Technology Svcs (3050)	Non-telecommunications (LAN/WAN & APSIN).	646.5	646.5	646.5
3018 Inter-Agency Information Technology Telecommunications	Admin - Department-wide	Non-telecommunications (LAN/WAN & APSIN).	482.0	399.4	399.4
3018 Inter-Agency Information Technology Telecommunications	Courts - Department-wide	RSA with Alaska Court Systems (ACS) for Reoccurring connection costs for the Video Arraignment system.	0.0	16.1	16.1
3018 Inter-Agency Information Technology Telecommunications	Trans - Department-wide	RSA with DOTPF for Two-Way Radio system Repairs and Maintenance.	0.0	55.0	55.0
3020 Inter-Agency Building Maintenance	Trans - Department-wide	DPS Tudor Complex building and yard maintenance. RSAs with ADOTPF for maintenance of state-owned rural trooper housing units (ADOTPF's Central, Northern, and Southeast Regions).	99.0	99.0	99.0

Inter-Agency Services (1682)
Department of Public Safety

Component: Alaska State Trooper Detachments (2325)

Object Class		Servicing Agency	Explanation	FY2016 Actuals	FY2017 Management Plan	FY2018 Governor
3021	Inter-Agency Mail	Admin - Department-wide	Central Mail services.	27.6	15.6	15.6
3021	Inter-Agency Mail	PubSaf - AST Detachments (2325)	DPS HQ mailroom services.	0.0	12.0	12.0
3022	Inter-Agency Human Resources	Admin - Department-wide	HR Personnel support.	88.0	88.0	88.0
3023	Inter-Agency Building Leases	Admin - Department-wide	Lease costs for AST facilities and lease administration costs charged by DOA.	1,016.9	850.9	850.9
3023	Inter-Agency Building Leases	M&VA - Department-wide	RSAs with DMVA, Army Guard Facilities Maintenance, for lease costs, utilities, and maintenance services for the Nome and Kotzebue Armories, Emmonak and Selawik Posts, and for Nenana sub lease.	1.0	167.0	100.0
3023	Inter-Agency Building Leases	Trans - Department-wide	Reimbursement to DOTPF for the costs of airport leases and tie-downs.	10.7	10.7	10.7
3024	Inter-Agency Legal	Law - Department-wide	Legal Services.	107.6	107.6	107.6
3026	Inter-Agency Insurance	Admin - Department-wide	RSA for payment of Tier IV Survivor Benefits.	103.9	30.9	30.9
3026	Inter-Agency Insurance	Admin - Department-wide	Risk Management property and overhead insurance.	0.0	73.0	73.0
3027	Inter-Agency Financial	Admin - Department-wide	AKPAY/ ALDER/ IRIS financial support.	31.8	31.8	31.8
3028	Inter-Agency Americans with Disabilities Act Compliance	Admin - Department-wide	Americans with Disabilities Act (ADA) allocation for services.	0.8	0.8	0.8
3029	Inter-Agency Education/Training	Admin - Department-wide	DOA Division of personnel and Division of Finance training.	59.0	0.3	0.3
3029	Inter-Agency Education/Training	PubSaf - Training Academy (524)	RSA with DPS Training Academy for the Alaska Law Enforcement Training (ALET) academy.	0.0	8.6	8.6
3029	Inter-Agency Education/Training	Univ - Department-wide	RSA with the University of Alaska Southeast for the Alaska Law Enforcement Training (ALET) academy.	0.0	58.7	10.0

Inter-Agency Services (1682)
Department of Public Safety

Component: Alaska State Trooper Detachments (2325)

Object Class	Servicing Agency	Explanation	FY2016 Actuals	FY2017 Management Plan	FY2018 Governor
3036 Inter-Agency Safety	Correct - Department-wide	RSA with Dept. of Corrections for the reimbursement of staff time at Goose Creek Correctional Facility in support of video court hearings.	10.5	7.0	7.0
3036 Inter-Agency Safety	Labor - Department-wide	Boiler inspection services, by the Dept. of Labor, for AST Posts.	0.4	0.4	0.4
3036 Inter-Agency Safety	M&VA - Department-wide	RSA with Division of Motor Vehicles for the Kotzebue Clerk Job Sharing services.	0.0	8.0	8.0
3036 Inter-Agency Safety	Trans - Department-wide	Radar recertification RSA with Division of Measurement Standards.	8.6	8.6	8.6
3036 Inter-Agency Safety	Trans - Department-wide	Airport badge services.	0.0	1.0	1.0
3037 State Equipment Fleet	Trans - Department-wide	State Equipment Fleet costs, such as, fuel, fixed costs for asset maintenance, maintenance and repair services not included as a fixed asset cost, fixed cost services for equipment replacement, unallowable A87 expenses, and repairs and maintenance services due to accident damage.	3,878.9	3,253.8	3,645.3
3038 Inter-Agency Management/Consulting	PubSaf - Administrative Services (525)	DPS Admin Services cost allocation.	484.2	484.2	484.2
3038 Inter-Agency Management/Consulting	PubSaf - AST Detachments (2325)	DPS Office of Professional Services cost allocation.	112.8	112.8	112.8
3038 Inter-Agency Management/Consulting	PubSaf - Commissioner's Office (523)	DPS Commissioner's Office cost allocation.	40.2	40.2	40.2