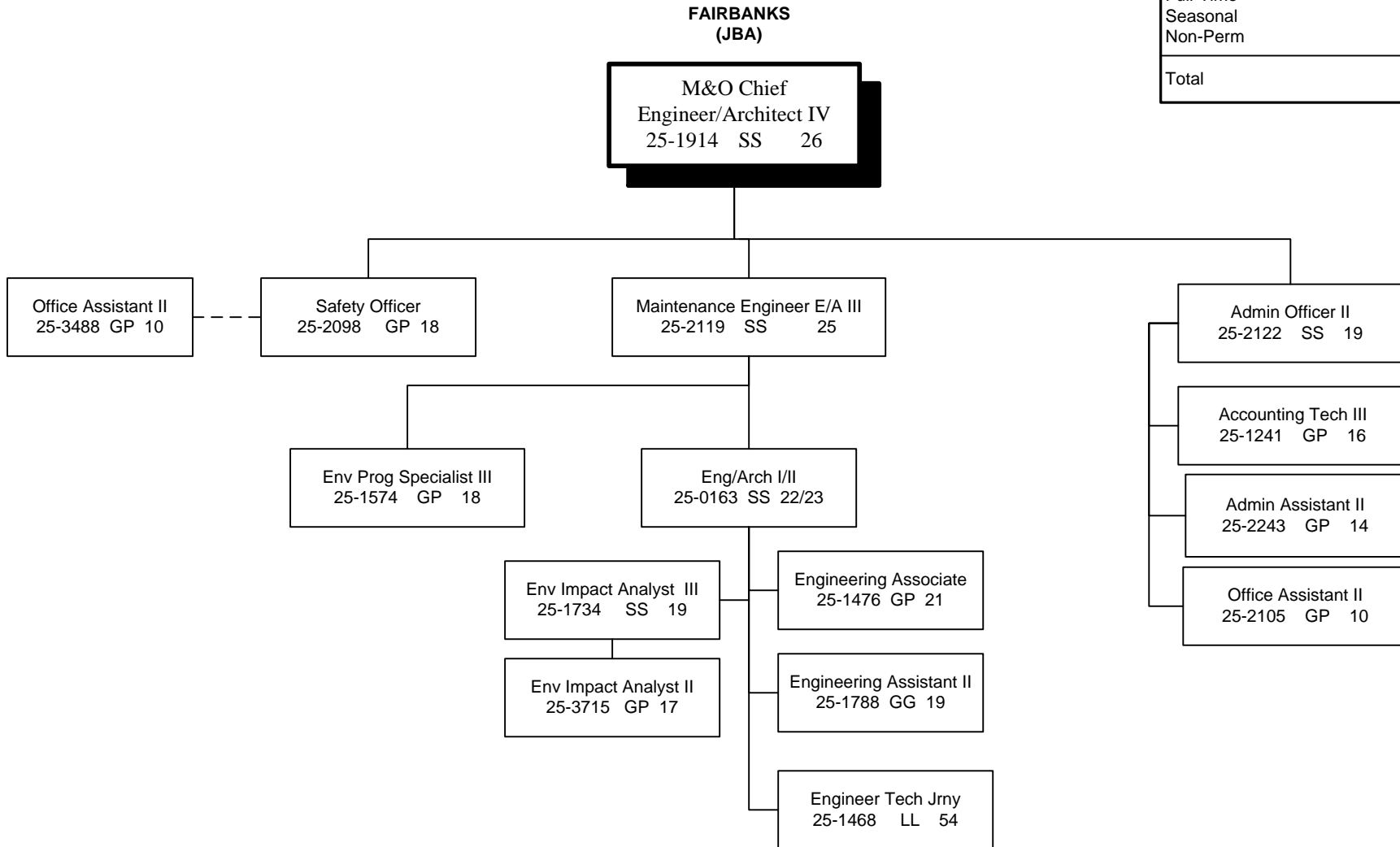


**FY2018 GOVERNOR'S  
HIGHWAYS, AVIATION AND FACILITIES (408)  
NORTHERN REGION HIGHWAYS & AVIATION (2068)  
ADMINISTRATION/ENGINEERING, CHART 1**

NORTHERN REGION HIGHWAYS & AVIATION	
Positions	Total
Full-Time	244
Seasonal	56
Non-Perm	20
<b>Total</b>	<b>320</b>



**FY2018 GOVERNOR'S  
HIGHWAYS, AVIATION AND FACILITIES (408)  
NORTHERN REGION HIGHWAYS & AVIATION  
FAIRBANKS DISTRICT, CHART 1A**

M&O Superintendent  
25-3385 SS 21

Admin Assistant III  
25-1905 GG 15

M&O Chief  
25-1914 SS 26

Accounting Tech I  
25-2120 GP 12

**FAIRBANKS  
(JBA)**

Equipment Operator (F2)  
25-1919 LL 50

**MONTANA CREEK  
(JME)**

Equipment Operator (L)  
25-3676 LL 52

Equipment Operator (J2)  
25-1934 LL 53

Equipment Operator (J2)  
25-1964 LL 53

Equipment Operator (J2)  
25-2049 LL 53

Equipment Operator (J2)  
25-3673 LL 53

Equipment Operator (J2)  
25-3675 LL 53

**FAIRBANKS  
TRAFFIC (JBA)**

Maint Spec TCES (J2)  
25-2075 LL 51

Maint Spec TCES (J2)  
25-1916 LL 51

Maint Spec TCES (J2)  
25-1968 LL 51

Equipment Operator (F1)  
25-1927 LL 51

Equipment Operator (J2)  
25-1917 LL 53

Equipment Operator (J2)  
25-1924 LL 53

Equipment Operator (J2)  
25-1926 LL 53

Equipment Operator (J2)  
25-3663 LL 53

Equipment Operator (SJ2/  
J2)  
25-1681 LL 54/56

Equipment Operator (J1)  
25-1918 LL 54

Equipment Operator (J1)  
25-2079 LL 54

**FAIRBANKS SIGNS (JBA)**

Equipment Operator (J2)  
25-1670 LL 53

Equipment Operator (J2)  
25-1935 LL 53

Equipment Operator (F1)  
25-1929 LL 51

Equipment Operator (J2)  
25-1458 LL 53

Equipment Operator (J2)  
25-1930 LL 53

Equipment Operator (J2)  
25-1931 LL 53

Equipment Operator (J2)  
25-1936 LL 53

Equipment Operator (J2)  
25-1943 LL 53

Equipment Operator (J2)  
25-1979 LL 53

Equipment Operator (J2)  
25-1989 LL 53

Equipment Operator (J2)  
25-3437 LL 53

Equipment Operator (J1)  
25-1928 LL 54

Equipment Operator (J1)  
25-1933 LL 54

Equipment Operator (J1)  
25-1944 LL 54

Equipment Operator (J1)  
25-1946 LL 54

Equipment Operator (J1)  
25-2022 LL 54

Equipment Operator (J1)  
25-2077 LL 54

Equipment Operator (J1)  
25-2081 LL 54

Equipment Operator  
SJII/J1)  
25-2017 LL 54/56

Equipment Operator (F1)  
25-1920 LL 51

Equipment Operator (J2)  
25-1915 LL 53

Equipment Operator (J2)  
25-1937 LL 53

Equipment Operator (J2)  
25-1941 LL 53

Equipment Operator (J2)  
25-1986 LL 53

Equipment Operator (J2)  
25-2071 LL 53

Equipment Operator (J2)  
25-2088 LL 53

Equipment Operator (J1)  
25-1562 LL 54

Equipment Operator (J1)  
25-1996 LL 54

Equipment Operator (J1)  
25-2072 LL 54

Equipment Operator (J1)  
25-1973s LL 54

Equipment Operator (SJ1)  
25-1940s LL 58

Equipment Operator  
(SJ1)  
25-2074s LL 58

Equipment Operator (SJ1)  
25N09042 LL 58

Equipment Operator (SJ1)  
25N09043 LL 58

Equipment Operator (SJ1)  
25N09044 LL 58

**FY2018 GOVERNOR'S  
HIGHWAYS, AVIATION AND FACILITIES (408)  
NORTHERN REGION HIGHWAYS & AVIATION (2068)  
DENALI DISTRICT, CHART 1B**

**FAIRBANKS  
(JBA)**

M&O Chief  
25-1914 SS 26

Denali M&O Superintendent  
25-1902 SS 21

Admin Assistant III  
25-1954 GP 15

**CANTWELL  
(HJI)**

Equipment Operator (F1)  
25-1952 LL 51

Equipment Operator (J2)  
25-1921 LL 53

Equipment Operator (J2)  
25-1991 LL 53

Equipment Operator (J2)  
25-1999 LL 53

Equipment Operator (J2)  
25-2000 LL 53

Equipment Operator (J2)  
25-2001 LL 53

Equipment Operator (J2)  
25-2025s LL 53

Equipment Operator (J2)  
25-3610s LL 53

Equipment Operator (J1)  
25-1706s LL 58

**HEALY  
(HJA)**

Equipment Operator (J3/L)  
25-1995 LL 52

Equipment Operator (J2)  
25-1997 LL 53

Equipment Operator (J2)  
25-1998s LL 53

Equipment Operator (J1)  
25-1961s LL 54

Equipment Operator (SJ1)  
25N16168 LL 58

**NENANA  
(JBM)**

Equipment Operator (L)  
25-1990 LL 52

Equipment Operator (J2)  
25-1955 LL 53

Equipment Operator (J2)  
25-1993 LL 53

Equipment Operator (J2)  
25-2087 LL 53

Equipment Operator (J1)  
25-1942s LL 54

Equipment Operator (SJ2)  
25-2018s LL 56

**NR BRIDGE CREW -  
FAIRBANKS  
(JBA)**

Equipment Operator (F1)  
25-1932 LL 51

Equipment Operator (SJ1)  
25N09040 LL 58

Equipment Operator (SJ1)  
25N09041 LL 58

**RURAL AVIATION  
- FAIRBANKS  
(JBA)**

Equipment Operator Lead (J3)  
25-3554 LL 52

**GALENA  
(HYC)**

Equip Operator Foreman I  
25-1908 LL 51

Equipment Operator (J2)  
25-1909 LL 53

Equipment Operator (J2)  
25-1910s LL 53

**FY2018 GOVERNOR'S  
HIGHWAYS, AVIATION AND FACILITIES (408)  
NORTHERN REGION HIGHWAYS & AVIATION  
TOK DISTRICT, CHART 1C**

Engineer/Arc IV  
25-1914 SS 26

**TOK  
(HEB)**

Tok M&O Superintendent  
25-1901 SS 21

Admin Assistant III  
25-1904 GP 15

Office Assistant II  
25-3489s GP 10

**NORTHWAY  
(HEC)**

**DELTA  
(JJB)**

- Equipment Operator (F1)  
25-1947 LL 51
- Equipment Operator (J2)  
25-1948 LL 53
- Equipment Operator (J2)  
25-1949 LL 53
- Equipment Operator (J2)  
25-1950 LL 53
- Equipment Operator (J2)  
25-1951 LL 53
- Equipment Operator (J2)  
25-1975 LL 53
- Equipment Operator (J2)  
25-2199 LL 53
- Equipment Operator (J1)  
25-1938s LL 54
- Equipment Operator (SJ2)  
25-1967s LL 56

- Equipment Operator (J2)  
25-2002 LL 52
- Equipment Operator (J2)  
25-2005 LL 53
- Equipment Operator (J2)  
25-2021 LL 53
- Equipment Operator (J2)  
25-3674 LL 53
- Equipment Operator (J2)  
25-2003s LL 53

**EAGLE (JKA)**

- Equipment Operator (J2)  
25-2013 LL 53
- Equipment Operator (J2)  
25-2012s LL 53
- Equipment Operator (J2)  
25-2014s LL 53

**SOUTH FORK  
(JKF)**

- Equipment Operator (J2)  
25-2011s LL 53
- Equipment Operator (J2)  
25-2010s LL 53
- Equipment Operator  
(Flex J2)  
25-2009s LL 53
- Equipment Operator (SJ2)  
25-1978s LL 56
- Equipment Operator (J1)  
25-1983s LL 54

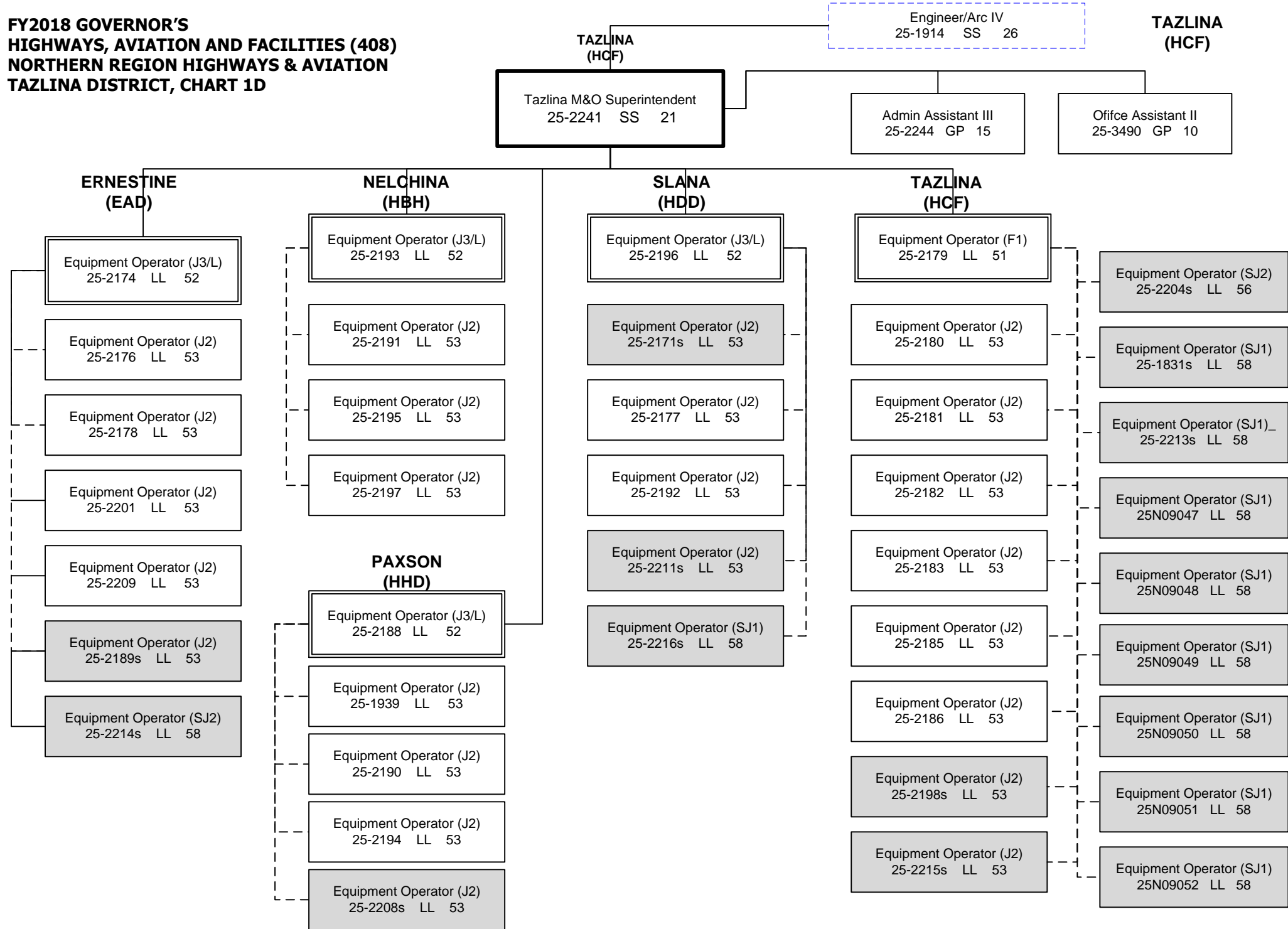
**TOK  
(HEB)**

- Equipment Operator (F1)  
25-1957 LL 51
- Equipment Operator (J2)  
25-1958 LL 53
- Equipment Operator (J2)  
25-1959s LL 53
- Equipment Operator (J2)  
25-1962 LL 53
- Equipment Operator (J2)  
25-1977 LL 53
- Equipment Operator (J2)  
25-1992 LL 53
- Equipment Operator (J2)  
25-2089 LL 53
- Equipment Operator (J2)  
25-3523s LL 53
- Equipment Operator (J1)  
25-1966s LL 54
- Equipment Operator (SJ2)  
25-1994s LL 56

**TRIMS  
(HHH)**

- Equipment Operator (J3/L)  
25-3428 LL 52
- Equipment Operator (J2)  
25-1911 LL 53
- Equipment Operator (J2)  
25-2083s LL 53
- Equipment Operator (J2)  
25-2085s LL 53

**FY2018 GOVERNOR'S  
HIGHWAYS, AVIATION AND FACILITIES (408)  
NORTHERN REGION HIGHWAYS & AVIATION  
TAZLINA DISTRICT, CHART 1D**



**FY2018 GOVERNOR'S  
HIGHWAYS, AVIATION AND FACILITIES (408)  
NORTHERN REGION HIGHWAYS & AVIATION (2068)  
VALDEZ DISTRICT, CHART 1E**

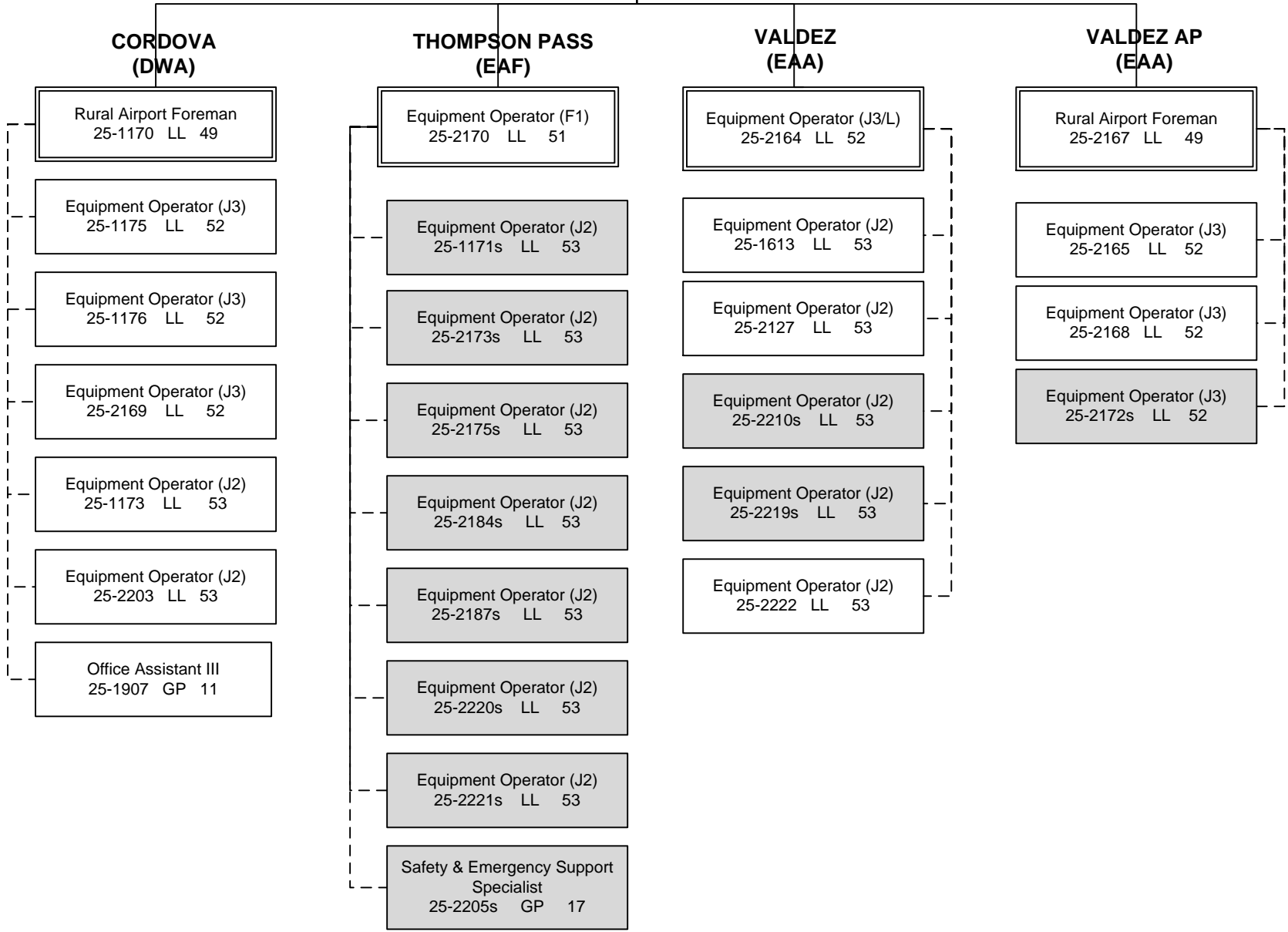
Engineer/Arc IV  
25-1914 SS 26

**VALDEZ  
(EAA)**

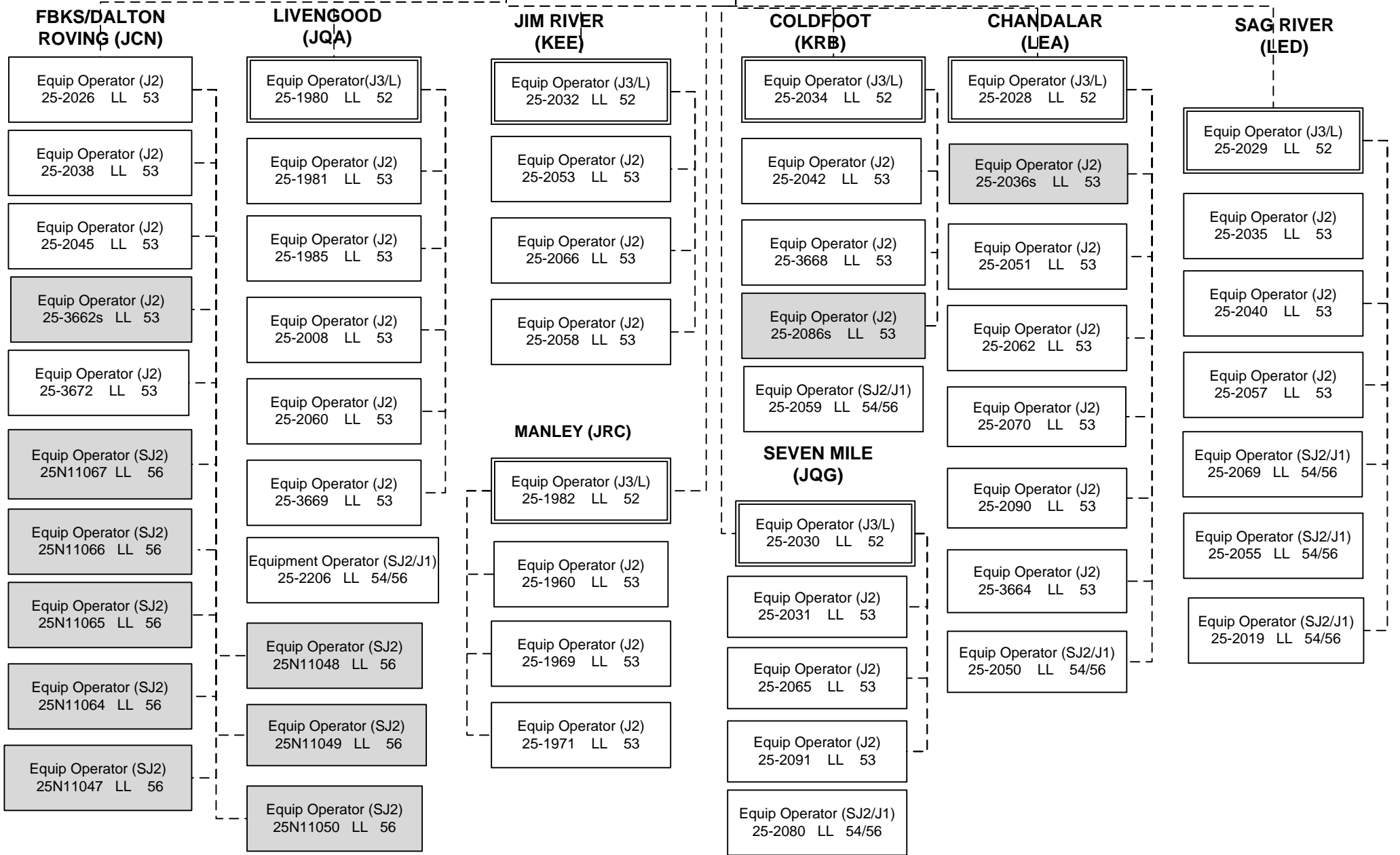
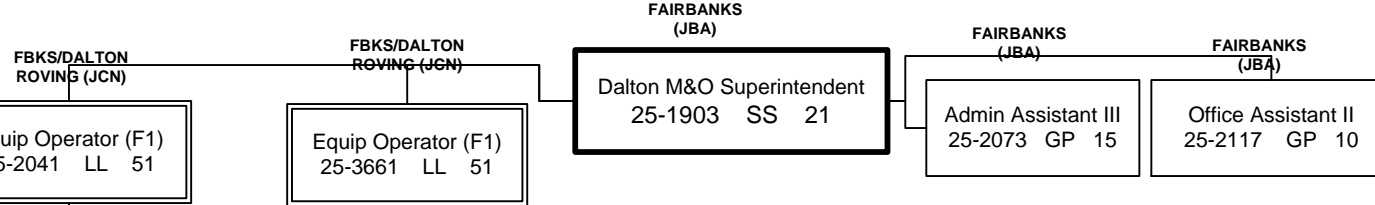
M&O Superintendent  
25-2245 SS 21

Admin Assistant III  
25-2232 GP 15

Office Assistant II  
25-2242 GP 10



**FY2018 GOVERNOR'S  
HIGHWAYS, AVIATION AND FACILITIES (408)  
NORTHERN REGION HIGHWAYS & AVIATION  
DALTON DISTRICT, CHART 2**



**FY2018 GOVERNOR'S  
HIGHWAYS, AVIATION AND FACILITIES (408)  
NORTHERN REGION HIGHWAYS & AVIATION (2068)  
DALTON DISTRICT, CHART 2B**

FAIRBANKS  
(JBA)

Dalton M&O Superintendent  
25-1903 SS 21

**BARROW  
(MEA)**

**DEADHORSE  
(MBC)**

Rural Airport Foreman  
25-3665 LL 49

Rural Airport Foreman  
25-2023 LL 49

(Work alternate  
workweeks)

(Work alternate  
workweeks)

Equip Op Foreman II  
25-3660 LL 50

Equip Op (J3/L)  
25-3356 LL 52

Equip Op Foreman II  
25-2061 LL 50

Equip Op Foreman II  
25-3671 LL 50

Equipment Operator (J3)  
25-2006 LL 52

Equipment Operator (J3)  
25-2044 LL 52

Equipment Operator (J3)  
25-1965 LL 52

Equipment Operator (J3)  
25-2046 LL 52

Equipment Operator (J3)  
25-2043 LL 52

Equipment Operator (J3)  
25-2047 LL 52

Equipment Operator (J3)  
25-2048 LL 52

Equipment Operator (J3)  
25-2064 LL 52

Equipment Operator (J3)  
25-2068 LL 52

Equipment Operator (J3)  
25-3670 LL 52

Maint Electrician (J2)  
25-2056 LL 51



**FY2018 GOVERNOR'S  
HIGHWAYS, AVIATION AND FACILITIES (408)  
NORTHERN REGION HIGHWAYS & AVIATION (2068)  
WESTERN DISTRICT, CHART 3**

**NOME  
(HTA)**

Engineer/Arc IV  
25-1914 SS 26

Western M&O Superintendent  
25-2162 SS 21

Office Assistant II  
25-2138 GP 10

**KOTZEBUE  
AIRPORT  
(KAA)**

Rural Airport Foreman  
25-2128 LL 49

Equipment Operator (J3)  
25-2129 LL 52

Equipment Operator (J3)  
25-2130 LL 52

Equipment Operator (J3)  
25-2137 LL 52

Equipment Operator (J3)  
25-3655 LL 52

Equipment Operator (J3)  
25-3656 LL 52

Equipment Operator (J3)  
25-3658 LL 52

Office Assistant III  
25-2142 GP 11

**NOME  
AIRPORT  
(HTA)**

Rural Airport Foreman  
25-2123 LL 49

Equipment Operator (J3)  
25-1671 LL 52

Equipment Operator (J3)  
25-2125 LL 52

Equipment Operator (J3)  
25-2139 LL 52

Equipment Operator (J3)  
25-2140 LL 52

Equipment Operator (J3)  
25-2146 LL 52

Equipment Operator (J3)  
25-2154 LL 52

Equipment Operator (J3)  
25-3657 LL 52

Office Assistant III  
25-1783 GP 11

**NOME  
HIGHWAYS  
(HTA)**

Equipment Operator (F1)  
25-2124 LL 51

Equipment Operator (J2)  
25-2126 LL 53

Equipment Operator (J2)  
25-2135 LL 53

Equipment Operator (J2)  
25-2136 LL 53

Equipment Operator (J2)  
25-2151 LL 53

Equipment Operator (J2)  
25-2152 LL 53

Equipment Operator (J2)  
25-2153 LL 53

Equipment Operator (J2)  
25-2144s LL 53

**TELLER  
(JYA)**

Equipment Operator (J2)  
25-2147s LL 53

**ST. MARY'S  
(EWG)**

Equipment Operator (F1)  
25-1178 LL 51

Equipment Operator (J2)  
25-1181 LL 53

Equipment Operator (J2)  
25-1472 LL 53

**UNALAKLEET  
AIRPORT  
(HQA)**

Equipment Operator (F1)  
25-2132 LL 51

Equipment Operator (J2)  
25-2149 LL 53

Equipment Operator (J2)  
25-2037 LL 53