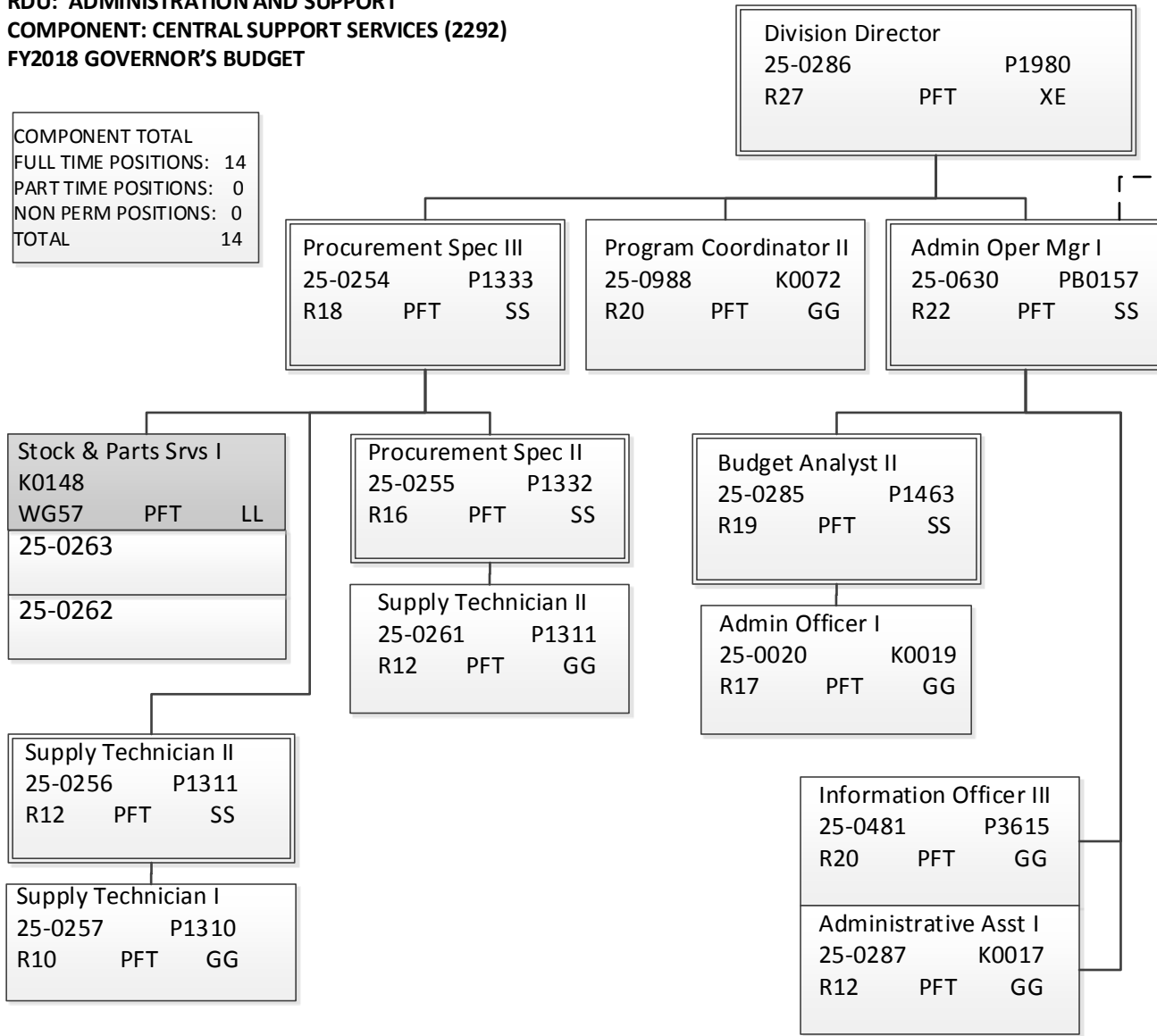


DEPARTMENT OF TRANSPORTATION & PUBLIC FACILITIES
RDU: ADMINISTRATION AND SUPPORT
COMPONENT: CENTRAL SUPPORT SERVICES (2292)
FY2018 GOVERNOR'S BUDGET

COMPONENT TOTAL
 FULL TIME POSITIONS: 14
 PART TIME POSITIONS: 0
 NON PERM POSITIONS: 0
 TOTAL 14



Admin Officer II 25-1216 K0020 R19 PFT SS	Admin Officer I 25-1211 K0019 R17 PFT SS
Office Assistant I P1134 R8 PFT GG	Admin Assistant I K0017 R12 PFT GG
25-0468	25-0401
25-0786	25-0441
Office Assistant II P1135 R10 PFT GG	Admin Assistant II K0018 R14 PFT GG
25-0418 25-0444	25-1036
25-0445 25-0461	25-1169
25-0495 25-0569	25-1189
25-0713 25-0739	25-3501
25-0757 25-0761	Administrative Asst III K0053 R15 PFT GG
25-0933 25-0935	25-0175
25-0980 25-0983	25-0242
25-1031 25-1185	25-0494
25-1214	
Office Assistant IV 25-0497 P1136 R12 PFT SS	

These positions are budgeted in various components throughout the department