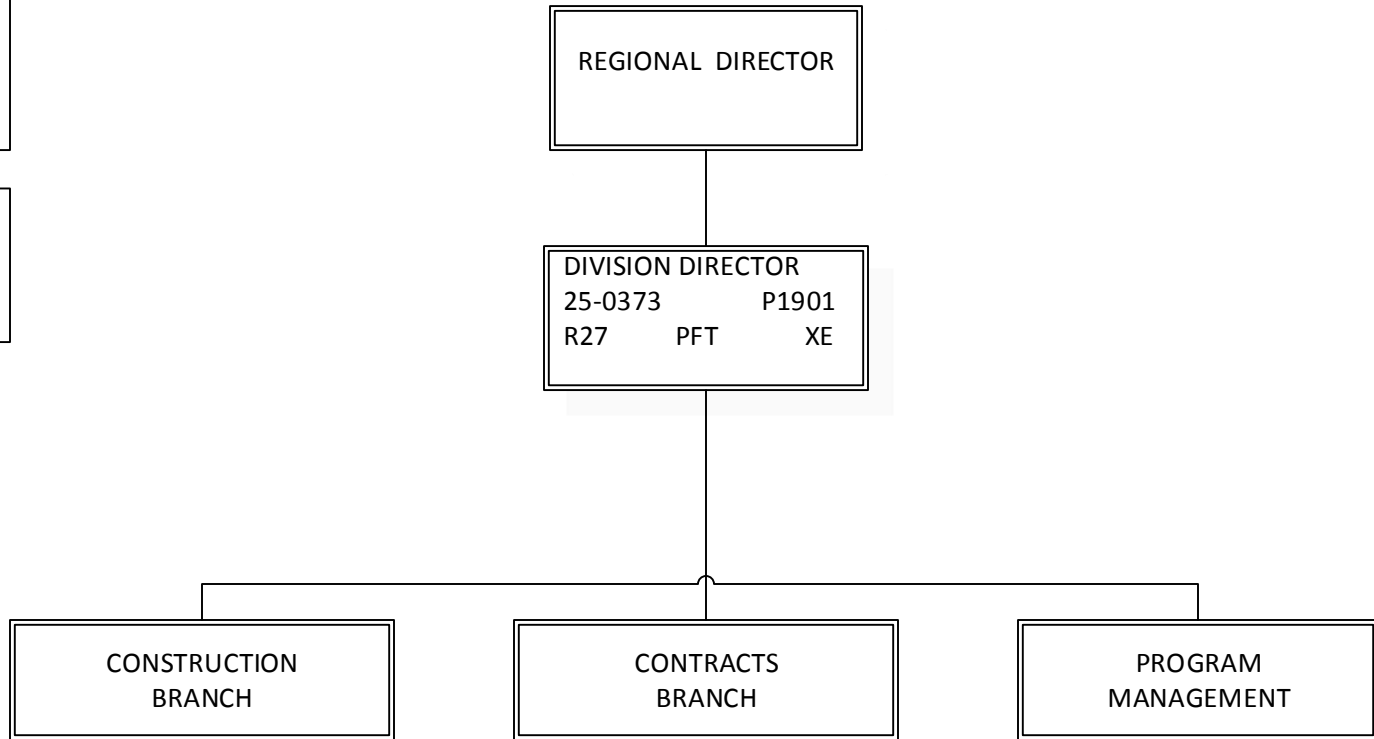


DEPARTMENT OF TRANSPORTATION & PUBLIC FACILITIES  
RDU: DESIGN, ENGINEERING AND CONSTRUCTION  
COMPONENT: CENTRAL REGION CONSTRUCTION AND CIP SUPPORT (2293)  
FY2018 GOVERNOR'S BUDGET

COMPONENT TOTAL	
FULL TIME POSITIONS:	110
PART TIME POSITIONS:	41
NON PERM POSITIONS:	19
TOTAL	170

REGIONAL OFFICE TOTAL	
FULL TIME POSITIONS:	1
PART TIME POSITIONS:	0
NON PERM POSITIONS:	0
TOTAL	1



Note: All positions are located in Anchorage.

**DEPARTMENT OF TRANSPORTATION & PUBLIC FACILITIES**  
**RDU: DESIGN, ENGINEERING AND CONSTRUCTION**  
**COMPONENT: CENTRAL REGION CONSTRUCTION & CIP SUPPORT (2293)**  
**FY2018 GOVERNOR'S BUDGET**

CONSTRUCTION TOTAL	
FULL TIME POSITIONS:	88
PART TIME POSITIONS:	41
NON PERM POSITIONS:	19
TOTAL	148

<b>REGIONAL CONSTRUCTION ENGINEER</b>		
Engineer/Architect V		
25-0408		P8918
R27	PFT	SS

Administrative Asst III		
25-0494		K0053
R15	PFT	GG

Office Assistant II		
P1135		
R10	PFT	GG
Shared Services Position		
25-0444		
25-0461		

**QUALITY ASSURANCE**

<b>Engineer/Architect III</b>		
25-0405		P8915
R25	PFT	SS

<b>CONSTRUCTION CHIEF</b>		
Engineer/Architect IV		
25-0391		P8916
R26	PFT	SS

<b>CONSTRUCTION CHIEF</b>		
Engineer/Architect IV		
25-0669		P8916
R26	PFT	SS

**CONCURRENT REVIEW**

**ROVING INSPECTORS**

Engineering Associate		
25-0625		P8925
R21	PFT	GG

Engineer Assistant III		
25-0731		P8912
R21	PFT	GG

Engineer Asst III		
25-0581		P8912
R21	PFT	GG

Engineer Assistant III		
25-3550		P8912
R21	PFT	GG

Engineer Assistant II		
25-0909		P8911
R19	PFT	GG

Engineer Assistant II		
P8911		
R19	PFT	GG
25-0735		
25-0737		
25-3506		

Engineer/Architect III		
P8915		
R25	PFT	SS
25-0440		
25-0502		

Engineer Assistant III		
25-3513		P8912
R21	PFT	GG

Engineer Assistant III		
25-0521		P8912
R21	PFT	GG

Accounting Tech II		
25-0411		P1211
R14	PFT	GG

Engineer/Architect II		
25-3400		P8914
R23	PFT	SS

Engineer/Architect III		
P8915		
R25	PFT	SS
25-0192		
25-0415		

Engineer/Architect II		
P8914		
R23	PFT	SS
25-0678		
25-0795		

Engineer Assistant III		
25-0681		P8912
R21	PFT	GG

ADDITIONAL STAFF ASSIGNED AS NEEDED FROM POSITION LISTING ON NEXT PAGE

Note: All positions are located in Anchorage.

**DEPARTMENT OF TRANSPORTATION & PUBLIC FACILITIES**  
**RDU: DESIGN, ENGINEERING AND CONSTRUCTION**  
**COMPONENT: CENTRAL REGION CONSTRUCTION & CIP SUPPORT (2293)**  
**FY2018 GOVERNOR'S BUDGET**

POSITIONS REPORT TO ENGINEER/ARCHITECT  
 POSITIONS ON PREVIOUS PAGE

Engineering Associate P8925		
R21	PFT	GG
25-0506		25-0518
25-0509		25-0758
25-0514		25-0796

Engineering Assistant III P8912		
R21	PFT	GG
25-0446		25-0674
25-0465		25-0688
25-0510		25-0694
25-0512		25-0759
25-0513		25-0799
25-0579		25-3399
25-0648		25-3514
		25-3515

Engineer-In-Training Engineering Asst I/II (FLEX) P8910/P8911		
R17/19	PFT	GG
25-3403		
25-3404		

Engineering Assistant I/II (FLEX) P8910/P8911		
R17/19	PFT	GG
25-0403		25-0654
25-0516		25-0693
25-0517		25-0696
25-0519		25-0701
25-0520		25-0760
25-0522		25-0767
25-0523		25-0804
25-0524		25-0807
25-0525		25-0809
25-0526		25-0811
25-0527		25-0814
25-0528		25-0815
25-0532		25-0822
25-0533		25-3503
25-0534		25-3504
25-0535		25-3505
25-0536		25-3507
25-0641		25-3508
25-0642		25-3509
25-0684		25-0650

Eng Tech Journey P9571		
WG54	PPT	LL
25-0539		25-0560
25-0540		25-0563
25-0542		25-0564
25-0552		25-0828
25-0553 Soldotna		25-0829 Wasilla
25-0554		25-0832
25-0555		25-0833
25-0559 Wasilla		

Eng Tech SJ II P9571		
WG57	PPT	LL
25-0547		25-0601
25-0548		25-0870
25-0586		25-0875
25-0587		25-0877
25-0591 Wasilla		25-0907
25-0592		25-0956
25-0593		25-0957
25-0594 Wasilla		
25-0595 Wasilla		

Eng Tech SJ III P9571		
WG55	PPT	LL
25-0562		25-0577
25-0570		25-0604
25-0571		25-0606
25-0572 Wasilla		25-0836 Wasilla
25-0574		25-0896

Eng Tech SJ I Non-Perm Positions		
WG59	LL	P9571
25-N09022 Wasilla		25-N09088
25-N09023		25-N09089
25-N09024 Wasilla		25-N09090
25-N09085		25-N09091 Wasilla
25-N09087		

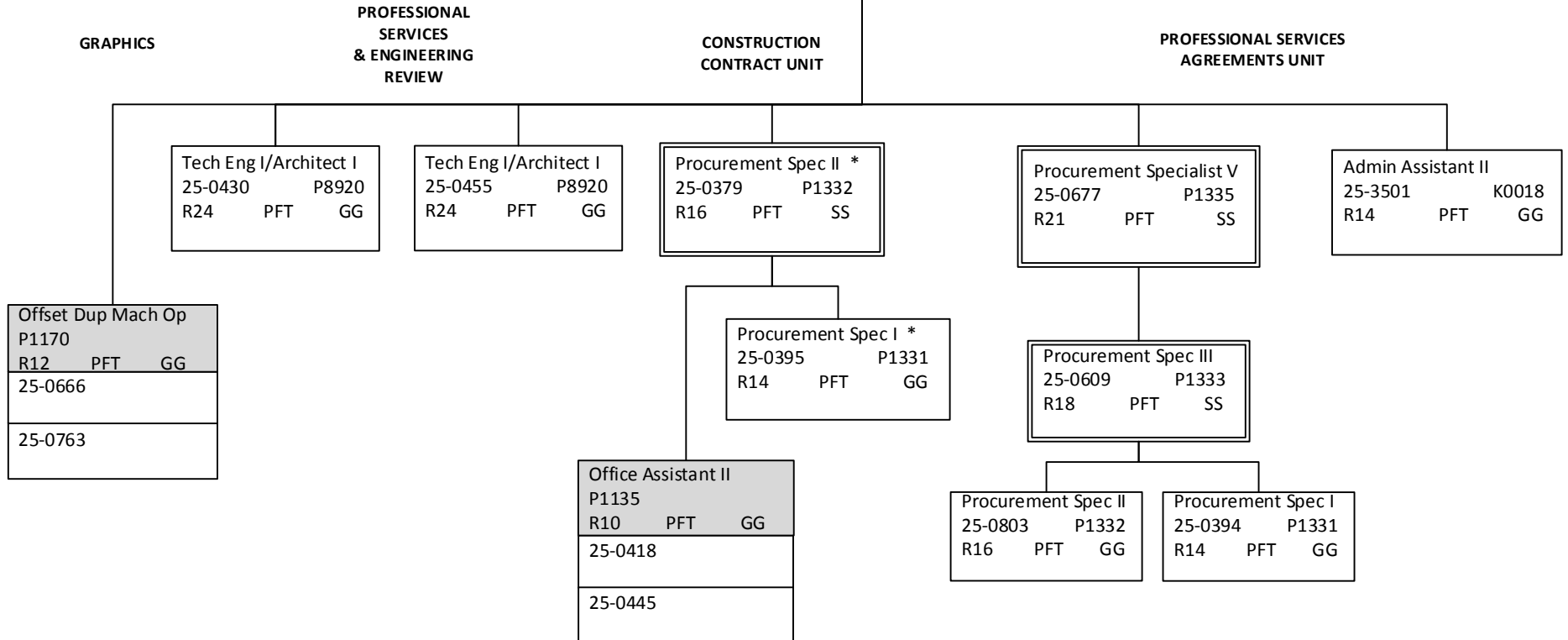
Eng Tech SJ I/II Non-Perm Interns		
WG57/59	LL	P9571
25-IN0916		25-IN0921
25-IN0917		25-IN0922
25-IN0918		25-IN0923
25-IN0919		25-IN0924
25-IN0920		25-IN0925

Note: All positions are located in Anchorage except where noted.

DEPARTMENT OF TRANSPORTATION & PUBLIC FACILITIES  
 RDU: DESIGN, ENGINEERING AND CONSTRUCTION  
 COMPONENT: CENTRAL REGION CONSTRUCTION AND CIP SUPPORT (2293)  
 FY2018 GOVERNOR'S BUDGET

CONTRACTS TOTAL	
FULL TIME POSITIONS:	14
PART TIME POSITIONS:	0
NON PERM POSITIONS:	0
TOTAL	14

<u>CHIEF OF CONTRACTS</u>		
Engineer/Architect III		
25-0375		P8915
R25	PFT	SS

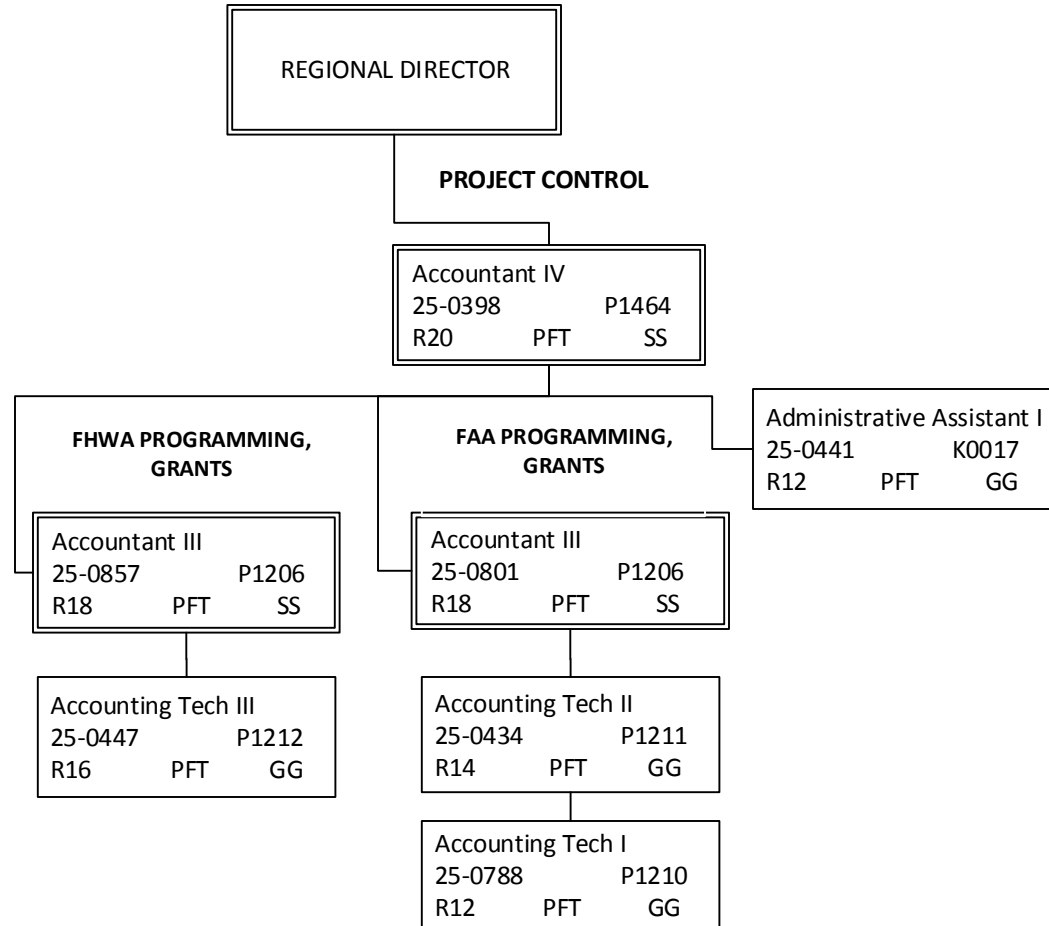


\* Shared staff between PSA Unit and Construction Contract Unit

Note: All positions are located in Anchorage.

DEPARTMENT OF TRANSPORTATION & PUBLIC FACILITIES  
RDU: DESIGN, ENGINEERING AND CONSTRUCTION  
COMPONENT: CENTRAL REGION CONSTRUCTION AND CIP SUPPORT (2293)  
FY2018 GOVERNOR'S BUDGET

PROGRAM MANAGEMENT TOTAL	
FULL TIME POSITIONS:	7
PART TIME POSITIONS:	0
NON PERM POSITIONS:	0
TOTAL	7



Note: All positions are located in Anchorage.