

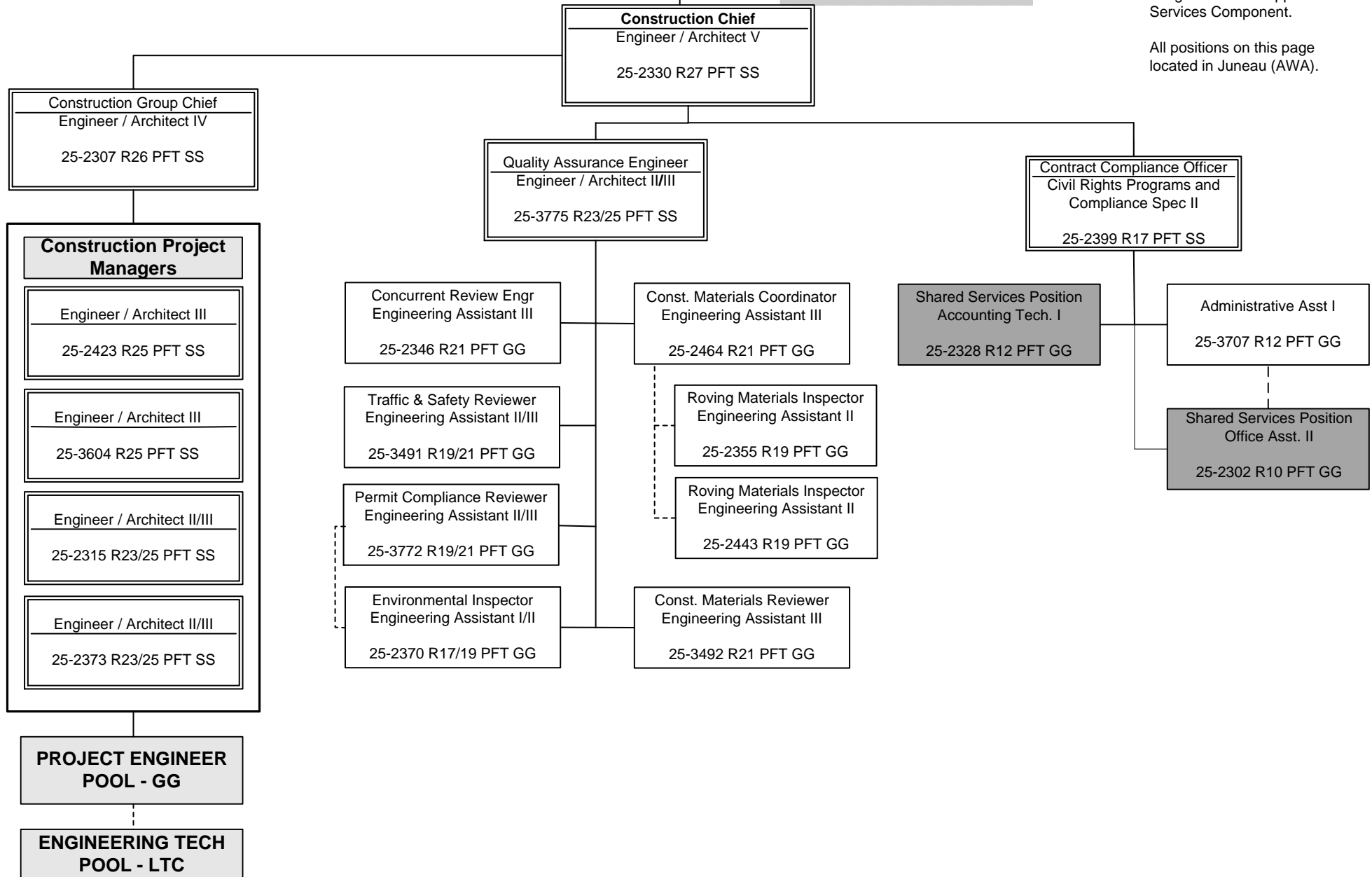
Department of Transportation and Public Facilities  
 RDU: Design, Engineering and Construction  
 COMPONENT: Southcoast Region Construction (2297)  
 FY2018 Governor's Budget  
 53 Positions: 32 PFT, 21 PPT, 0 NP

**Regional Director\***  
 25-2264

**Division Director\***  
 25-1374

\*25-2264 and 25-1374 are budgeted in the Support Services Component.

All positions on this page located in Juneau (AWA).



Department of Transportation and Public Facilities  
 RDU: Design, Engineering and Construction  
 COMPONENT: Southcoast Region Construction (2297)  
 FY2018 Governor's Budget  
 55 Positions: 34 PFT, 21 PPT, 0 NP

**PROJECT ENGINEER POOL (GG) / ENGINEERING TECHNICIAN POOL (LTC)**  
*(Assigned as needed to Engineer/Architect supervisors on Page 1)*

- Juneau - GG**
- Eng. Assoc.  
25-2326 R21 PFT GG
  - Eng. Assoc.  
25-2366 R21 PFT GG
  - Eng. Assoc.  
25-2367 R21 PFT GG
  - Eng. Assoc.  
25-3695 R21 PFT GG
  - Eng. Asst. III  
25-0911 R21 PFT GG
  - Eng. Asst. III  
25-3390 R21 PFT GG
  - Eng Asst. I/II/III  
25-2388 R17/19/21 PFT GG
  - Eng. Asst. I/II/III  
25-2389 R17/19/21 PFT GG
  - Eng. Asst. I/II/III  
25-3182 R17/19/21 PFT GG
  - Eng. Asst. I/II  
25-2356 R17/19 PFT GG

- Juneau - LTC**
- Eng Tech Journey - CTE  
25-2405 WG54 PPT LTC
  - Eng Tech Sub Journey III  
25-2415 WG55 PPT LTC
  - Eng Tech Sub Journey III  
25-2424 WG55 PPT LTC
  - Eng Tech Sub Journey III  
25-2429 WG55 PPT LTC
  - Eng Tech Sub Journey III  
25-3700 WG55 PPT LTC
  - Eng Tech Sub Journey III  
25-3705 WG55 PPT LTC

- Juneau - LTC**
- Eng Tech Sub Journey II  
25-0603 WG57 PPT LTC
  - Eng Tech Sub Journey II  
25-2432 WG57 PPT LTC
  - Eng Tech Sub Journey II  
25-2435 WG57 PPT LTC
  - Eng Tech Sub Journey II  
25-2446 WG57 PPT LTC
  - Eng Tech Sub Journey II  
25-3699 WG57 PPT LL
  - Eng Tech Sub Journey II  
25-3704 WG57 PPT LTC

- Haines - GG**
- Eng. Asst. III  
25-3771 R21 PFT GG

- Haines - LTC**
- Eng Tech Journey  
25-2406 WG54 PPT LTC
  - Eng Tech Sub Journey III  
25-2422 WG55 PPT LTC

- Ketchikan - GG**
- Eng. Asst. II/III  
25-2439 R19/21 PFT GG

- Ketchikan - LTC**
- Eng Tech Journey  
25-2402 WG54 PPT LTC

- Eng Tech Journey  
25-2409 WG54 PPT LTC

- Eng Tech Journey  
25-2414 WG54 PPT LTC

- Eng Tech Sub Journey III  
25-0583 WG55 PPT LTC

- Petersburg - GG**
- Eng. Asst. II/III  
25-2360 R19/21 PFT GG

- Petersburg - LTC**
- Eng Tech Journey  
25-2408 WG54 PPT LTC

- Eng Tech Journey  
25-3701 WG54 PPT LTC

- Sitka - GG**
- Eng. Asst. III  
25-2465 R21 PFT GG

- Eng. Asst. III  
25-3389 R21 PFT GG

- Sitka - LTC**
- Eng Tech Sub Journey II  
25-2412 WG57 PPT LTC