

DEPARTMENT OF TRANSPORTATION AND PUBLIC FACILITIES
 RDU: DESIGN AND CONSTRUCTION
 COMPONENT: CENTRAL DESIGN AND ENGINEERING SERVICES (2298)
 FY2018 GOVERNOR'S BUDGET

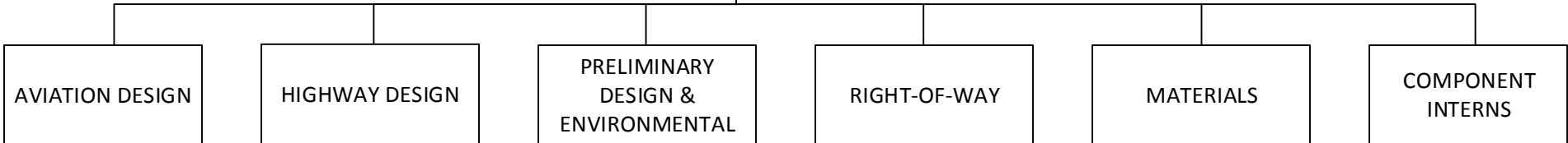
COMPONENT TOTAL	
FULL TIME POSITIONS:	158
PART TIME POSITIONS:	15
NON PERM POSITIONS:	9
TOTAL	182

REGIONAL OFFICE TOTAL	
FULL TIME POSITIONS:	3
PART TIME POSITIONS:	0
TOTAL	3

REGIONAL PRECONSTRUCTION ENGINEER		
Engineer/Architect V		
25-0382		P8919
R27	PFT	SS

Administrative Assistant III		
25-0175		K0053
R15	PFT	GG

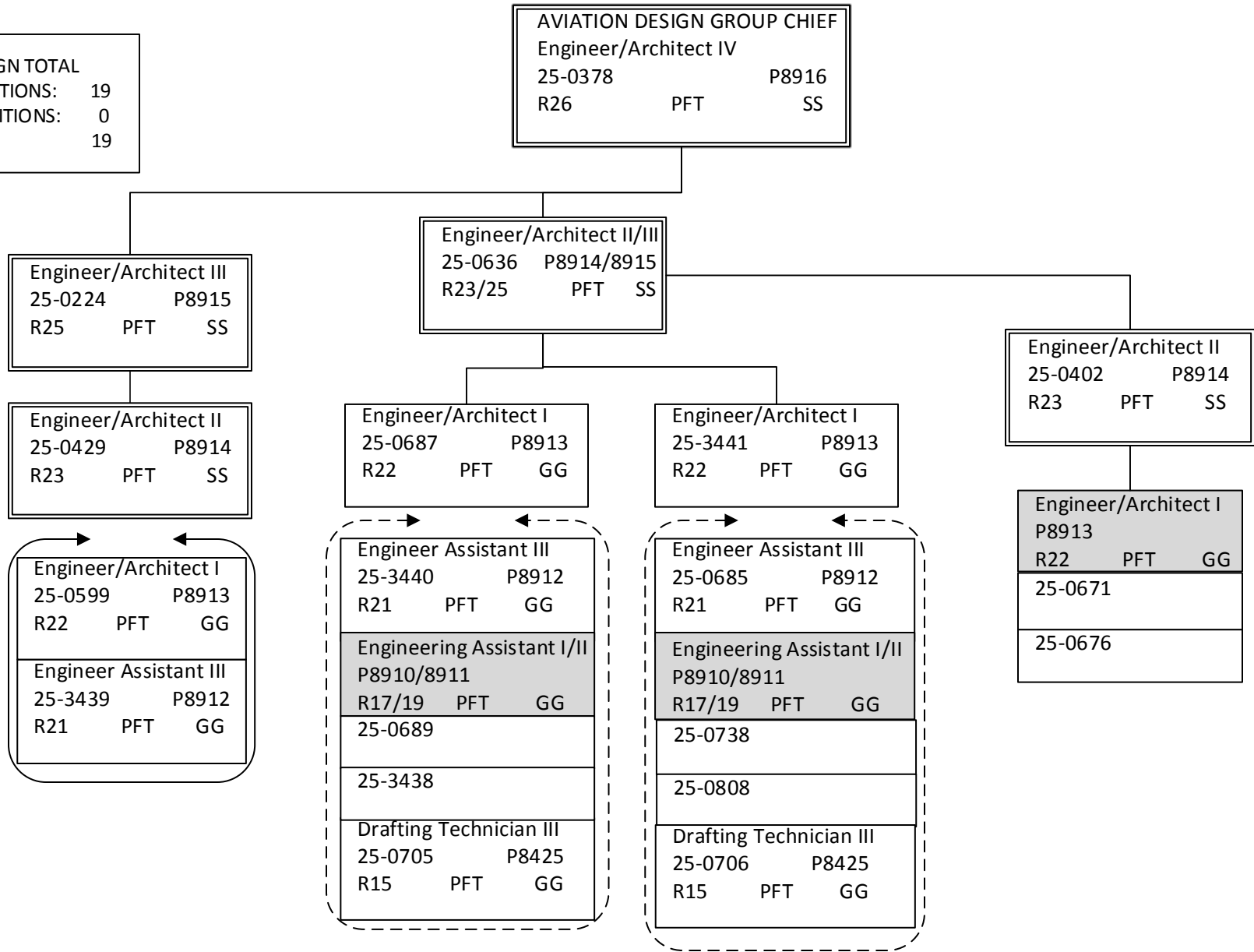
Office Assistant III		
25-0933		P1135
R10	PFT	GG



Note: All positions are located in Anchorage.

DEPARTMENT OF TRANSPORTATION AND PUBLIC FACILITIES
 RDU: DESIGN AND CONSTRUCTION
 COMPONENT: CENTRAL DESIGN AND ENGINEERING SERVICES (2298)
 FY2018 GOVERNOR'S BUDGET

AVIATION DESIGN TOTAL
 FULL TIME POSITIONS: 19
 PART TIME POSITIONS: 0
 TOTAL 19

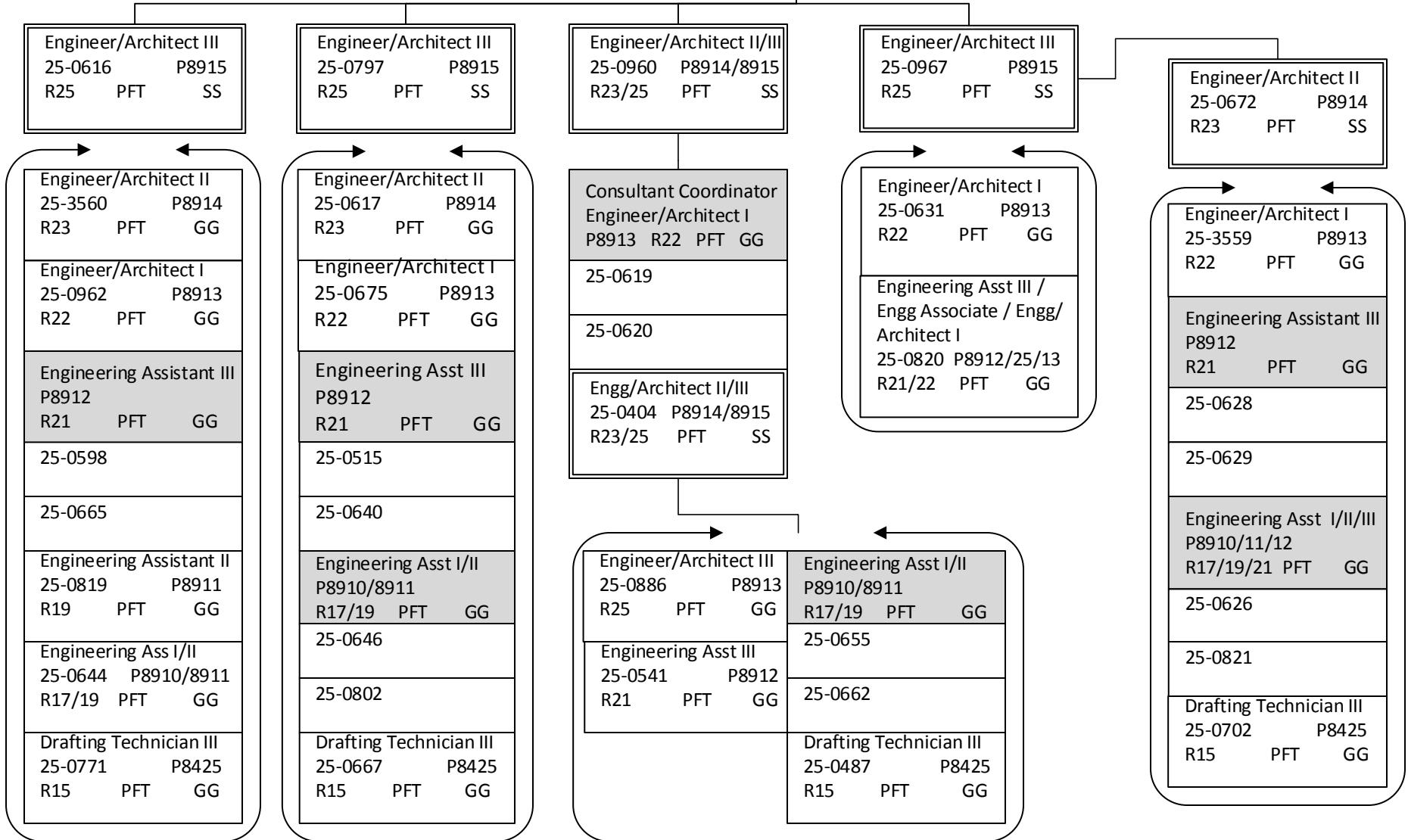


Note: All positions are located in Anchorage.

DEPARTMENT OF TRANSPORTATION AND PUBLIC FACILITIES
RDU: DESIGN AND CONSTRUCTION
COMPONENT: CENTRAL DESIGN AND ENGINEERING SERVICES (2298)
FY2018 GOVERNOR'S BUDGET

HIGHWAY DESIGN TOTAL	
FULL TIME POSITIONS:	42
PART TIME POSITIONS:	0
TOTAL	42

HIGHWAY DESIGN GROUP CHIEF		
Engineer/Architect IV		
25-0389		P8916
R26	PFT	SS

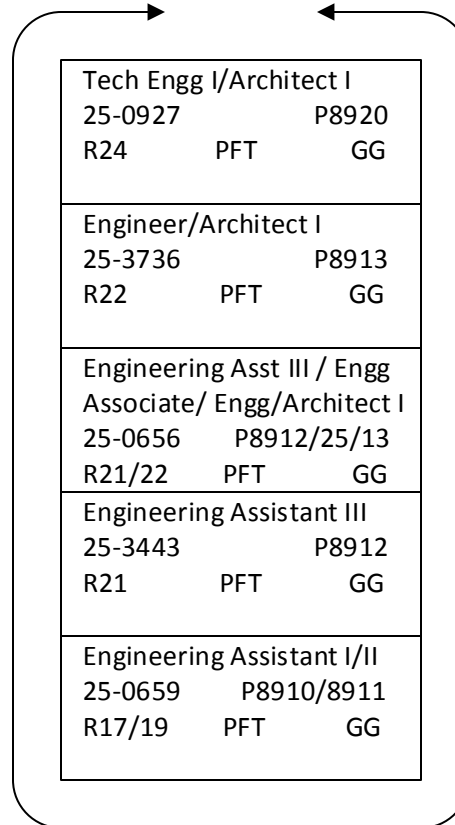


Note: All positions are located in Anchorage.

DEPARTMENT OF TRANSPORTATION AND PUBLIC FACILITIES
 RDU: DESIGN AND CONSTRUCTION
 COMPONENT: CENTRAL DESIGN AND ENGINEERING SERVICES (2298)
 FY2018 GOVERNOR'S BUDGET

HIGHWAY DESIGN GROUP CHIEF		
Engineer/Architect IV		
25-0389		P8916
R26	PFT	SS

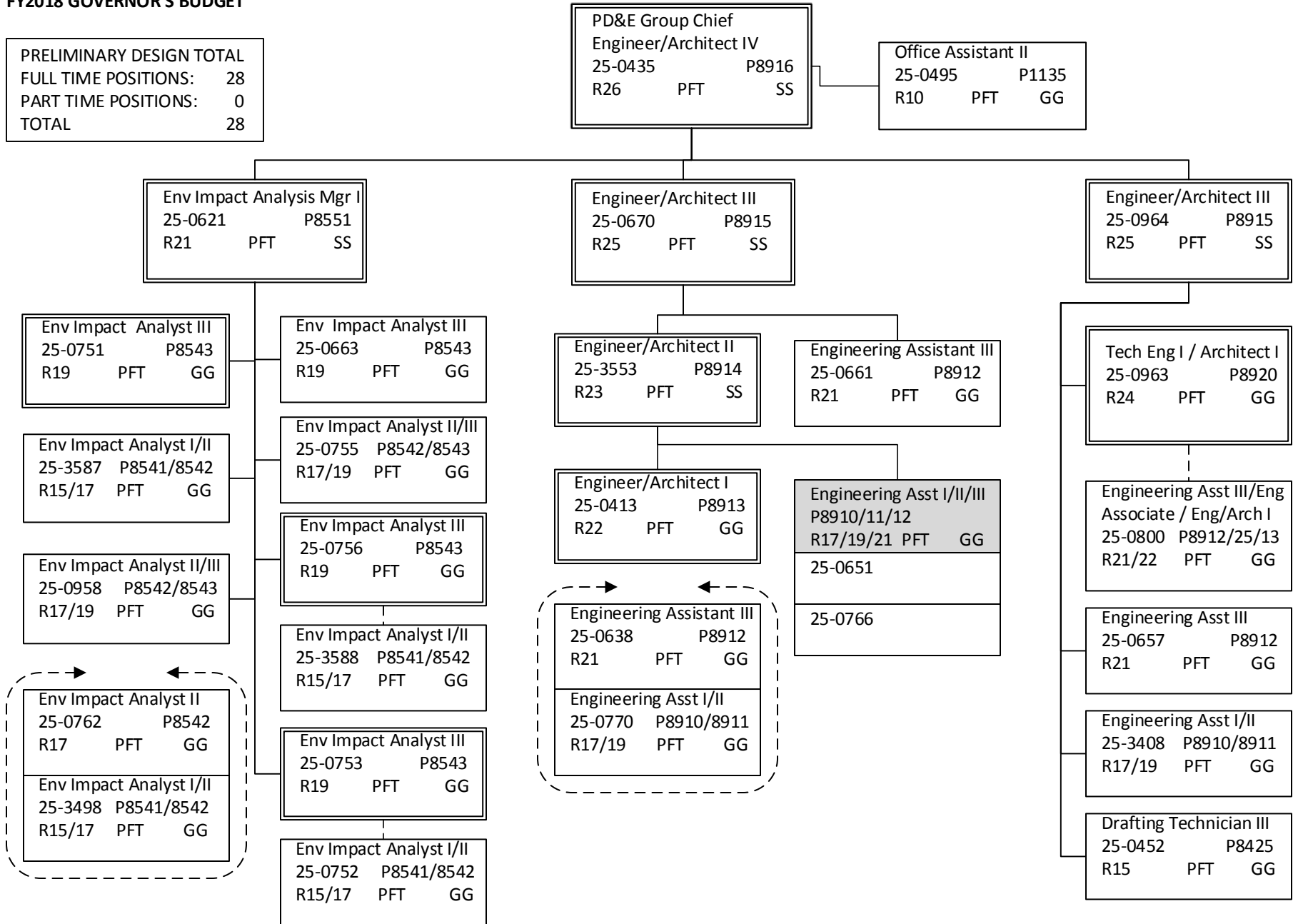
Technical Engg I/Architect I		
25-0627		P8920
R24	PFT	SS



Note: All positions are located in Anchorage.

**DEPARTMENT OF TRANSPORTATION AND PUBLIC FACILITIES
RDU: DESIGN AND CONSTRUCTION
COMPONENT: CENTRAL DESIGN AND ENGINEERING SERVICES (2298)
FY2018 GOVERNOR'S BUDGET**

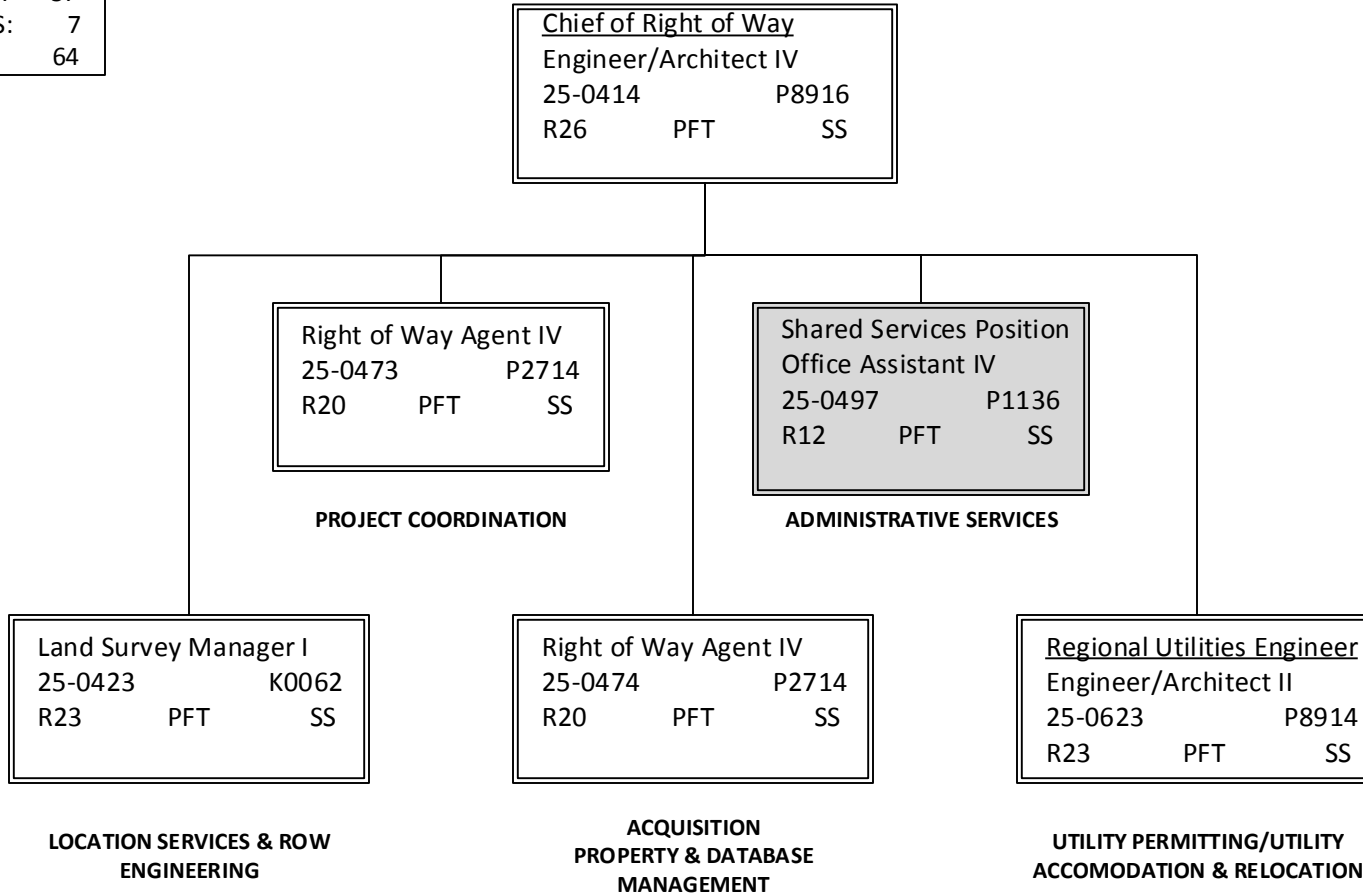
PRELIMINARY DESIGN TOTAL	
FULL TIME POSITIONS:	28
PART TIME POSITIONS:	0
TOTAL	28



Note: All positions are located in Anchorage.

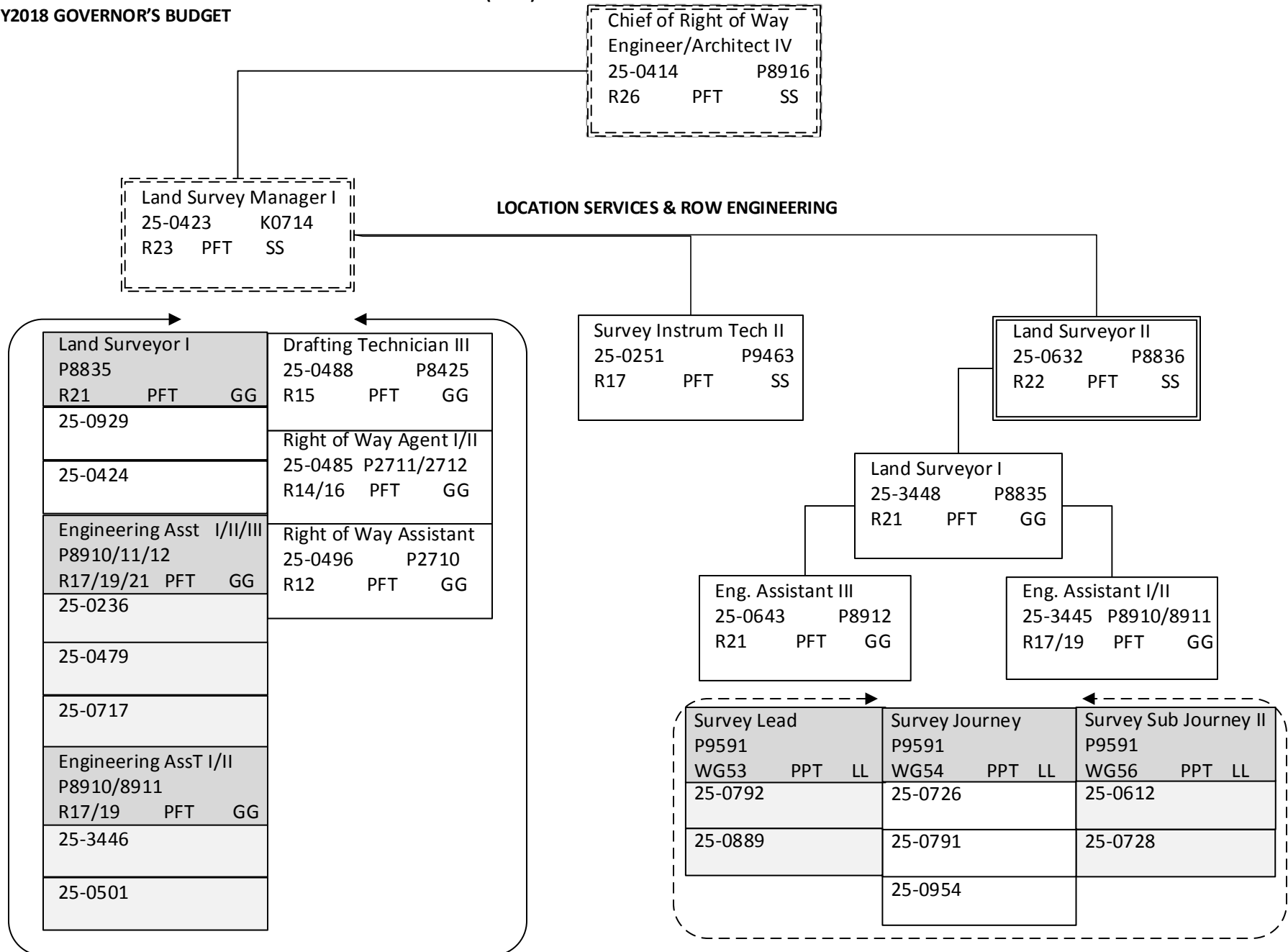
DEPARTMENT OF TRANSPORTATION AND PUBLIC FACILITIES
 RDU: DESIGN AND CONSTRUCTION
 COMPONENT: CENTRAL DESIGN AND ENGINEERING SERVICES (2298)
 FY2018 GOVERNOR'S BUDGET

RIGHT OF WAY TOTAL	
FULL TIME POSITIONS:	57
PART TIME POSITIONS:	7
TOTAL	64



Note: All positions are located in Anchorage.

DEPARTMENT OF TRANSPORTATION AND PUBLIC FACILITIES
 RDU: DESIGN AND CONSTRUCTION
 COMPONENT: CENTRAL DESIGN AND ENGINEERING SERVICES (2298)
 FY2018 GOVERNOR'S BUDGET



Note: All positions are located in Anchorage.

DEPARTMENT OF TRANSPORTATION AND PUBLIC FACILITIES
 RDU: DESIGN AND CONSTRUCTION
 COMPONENT: CENTRAL DESIGN AND ENGINEERING SERVICES (2298)
 FY2018 GOVERNOR'S BUDGET

Chief of Right of Way Engineer/Architect IV		
25-0414	P8916	
R26	PFT	SS

PROJECT COORDINATION

ADMINISTRATIVE SERVICES

ACQUISITION
PROPERTY & DATABASE
MANAGEMENT

Right of Way Agent IV		
25-0473	P2714	
R20	PFT	SS

Right of Way Agent IV		
25-0474	P2714	
R20	PFT	SS

Office Assistant IV		
25-0497	P1136	
R12	PFT	SS

Right of Way Agent III		
P2713		
R18	PFT	GG
25-0433		
25-0476		
25-0480		
Right of Way Agent II		
P2712		
R16	PFT	GG
25-0499		
25-0712		
25-3683		

Right of Way Agent III		
P2713		
R18	PFT	GG
25-3447		
25-0421		
25-0477		
Right of Way Agent II/III		
P2712/2713		
R16/18	PFT	GG
25-0486		
25-0695		
Right of Way Agent I/II		
25-0500	P2711/2712	
R14/16	PFT	GG
Right of Way Agent I		
25-0561	P2711	
R14	PFT	GG

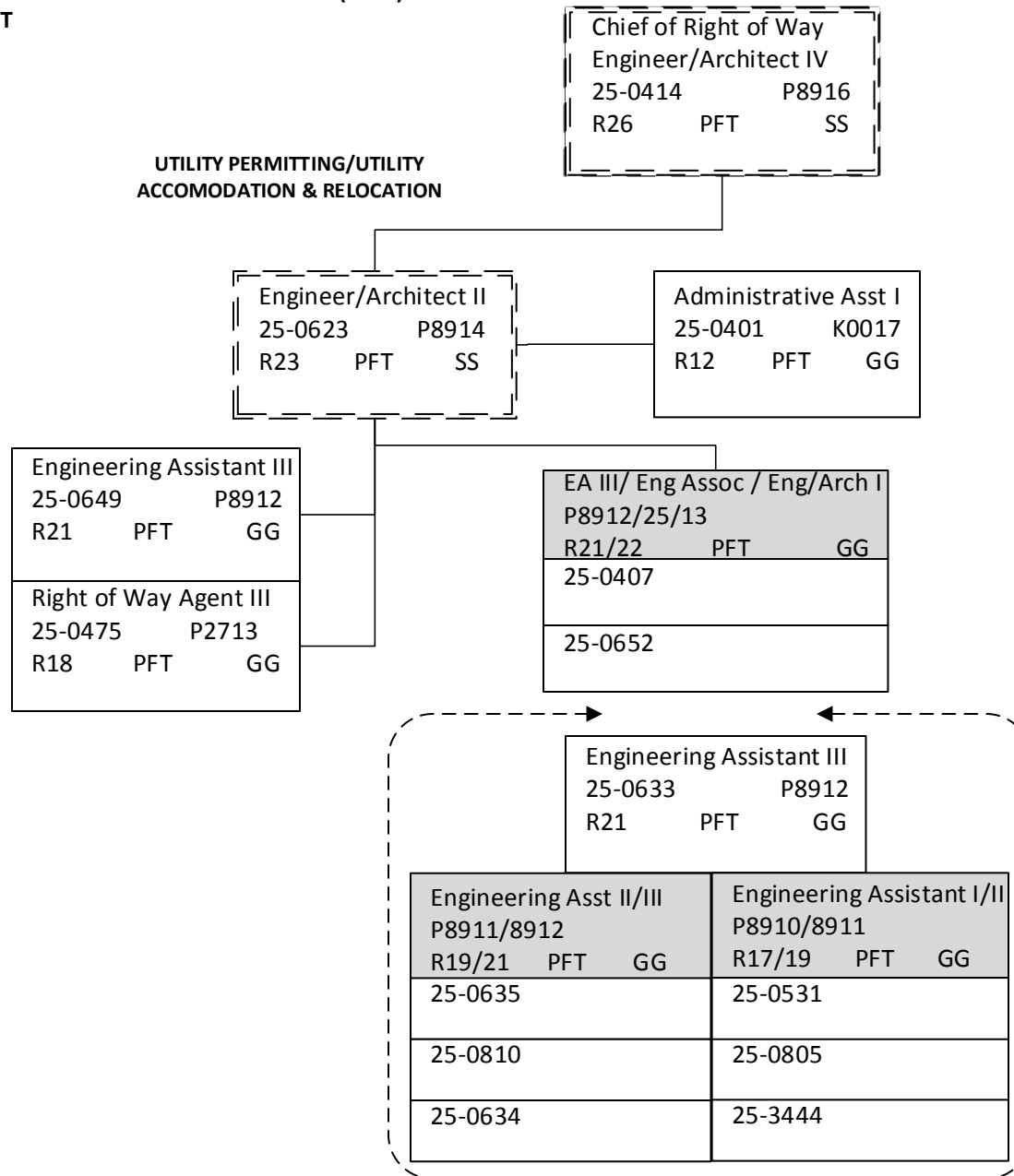
Right of Way Agent II		
P2712		
R16	PFT	GG
25-0427		
25-0482		
25-3684		
Right of Way Agent I/II		
P2711/2712		
R14/16	PFT	GG
25-0715		
25-0719		
Right of Way Assistant		
25-0492	P2710	
R12	PFT	GG

Shared Services Position		
Office Assistant II		
25-0761	P1135	
R10	PFT	GG
Office Assistant I		
25-0468	P1134	
R8	PFT	GG

Note: All positions are located in Anchorage.

DEPARTMENT OF TRANSPORTATION AND PUBLIC FACILITIES
 RDU: DESIGN AND CONSTRUCTION
 COMPONENT: CENTRAL DESIGN AND ENGINEERING SERVICES (2298)
 FY2018 GOVERNOR'S BUDGET

UTILITY PERMITTING/UTILITY
 ACCOMODATION & RELOCATION

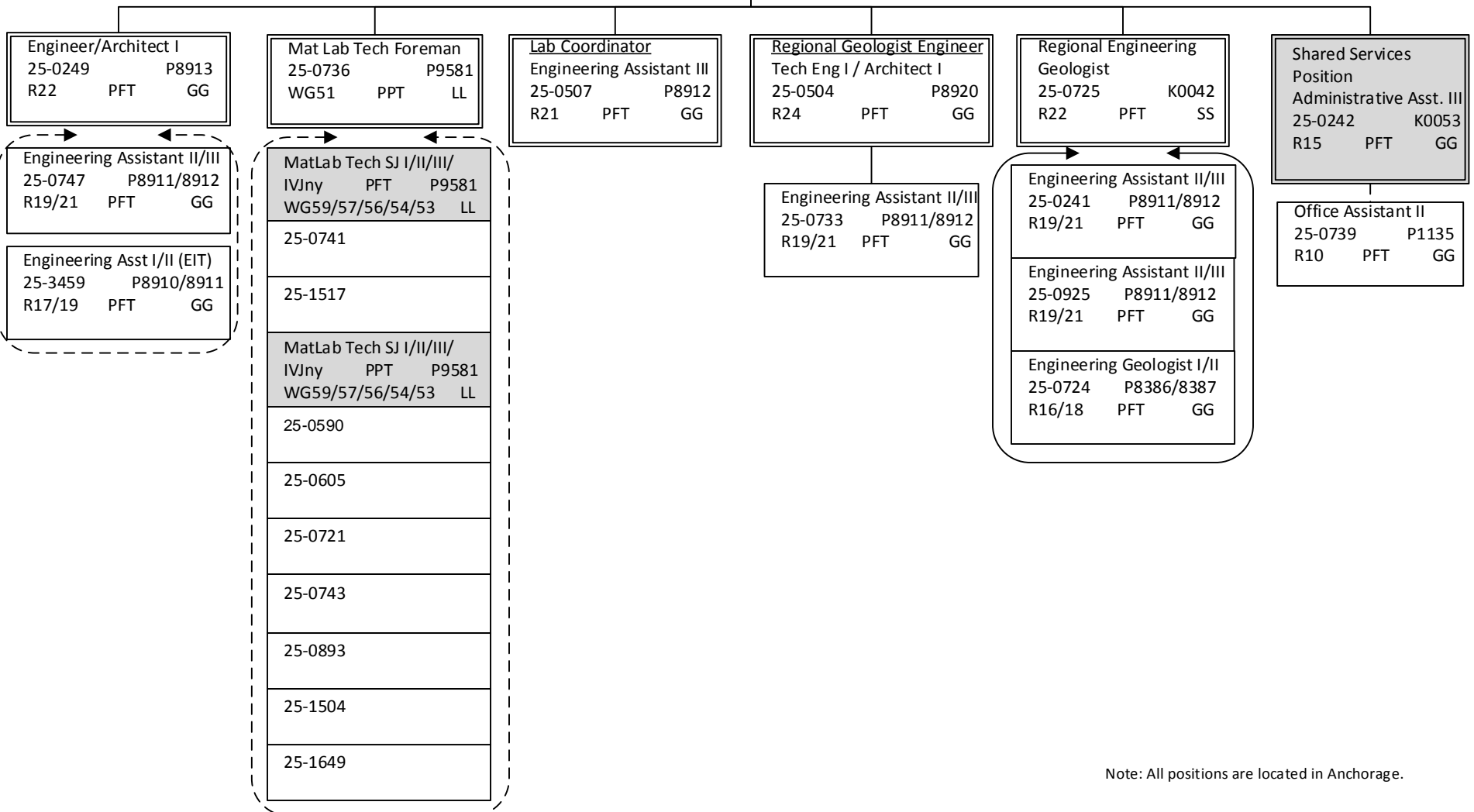


Note: All positions are located in Anchorage.

DEPARTMENT OF TRANSPORTATION AND PUBLIC FACILITIES
 RDU: DESIGN AND CONSTRUCTION
 COMPONENT: CENTRAL DESIGN AND ENGINEERING SERVICES (2298)
 FY2018 GOVERNOR'S BUDGET

MATERIALS TOTAL	
FULL TIME POSITIONS:	14
PART TIME POSITIONS:	8
TOTAL	23

MATERIALS ENGINEER		
Engineer/Architect III		
25-0387		P8915
R25	PFT	SS



Note: All positions are located in Anchorage.

DEPARTMENT OF TRANSPORTATION AND PUBLIC FACILITIES
RDU: DESIGN AND CONSTRUCTION
COMPONENT: CENTRAL DESIGN AND ENGINEERING SERVICES (2298)
FY2018 GOVERNOR'S BUDGET

COLLEGE INTERNS TOTAL	
FULL TIME POSITIONS:	0
PART TIME POSITIONS:	0
NON PERM POSITIONS:	9
TOTAL	9

COLLEGE INTERNS

College Intern I/II (FLEX)		
R8/9	EE	P6954/P6955
25IN1215		

College Intern I/II/III/IV (FLEX)		
R8/9/10/12	EE	P6954/P6955
25IN1218		25IN1437
25IN1430		25IN1438
25IN1431		25IN1441
25IN1436		25IN1503

Note: All positions are located in Anchorage.