

Department of Transportation and Public Facilities
 RDU: Design, Engineering and Construction
 Component: Southcoast Region Design and Engineering Services (2300)
 FY2018 Governor's Request

SOUTHCOAST REGION DESIGN & ENGINEERING SERVICES	
POSITIONS	TOTAL
FULL-TIME	72
SEASONAL	6
NON PERM	0
TOTAL	78

All positions located in Juneau (AWA)

DIVISION DIRECTOR *
 25-1374 (27) PX PFT

*25-1374 is budgeted in the Support Services component.

PRE-CONSTRUCTION ENGINEER
 Eng/Arch V
 25-2300 (27) SS PFT

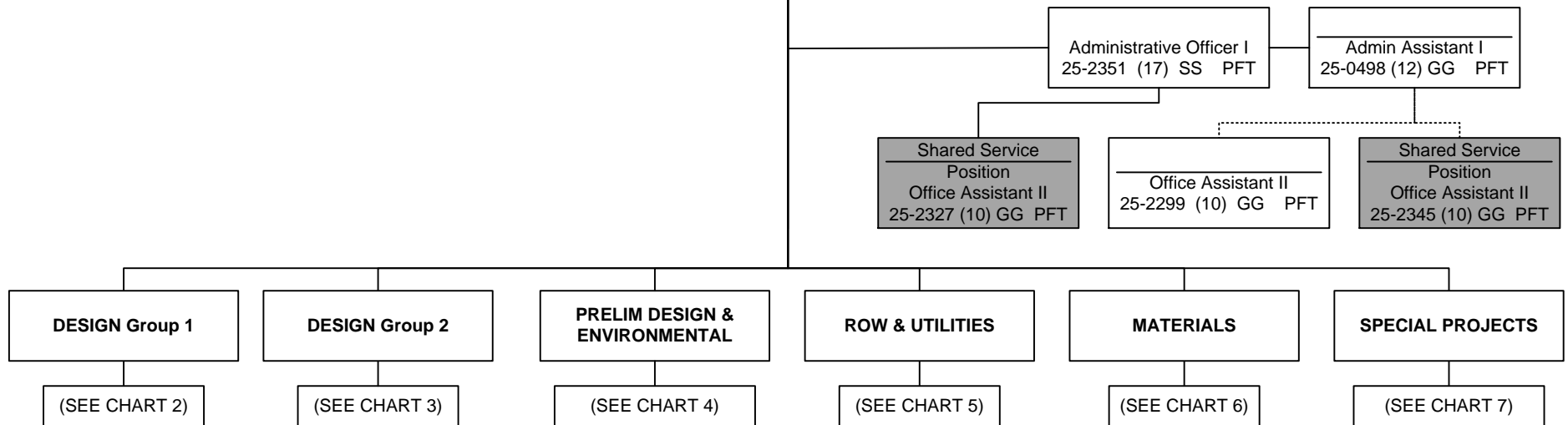


CHART 1

Positions	Total
Full-Time	4
Seasonal	0
Total	4

Department of Transportation and Public Facilities
 RDU: Design, Engineering and Construction
 Component: Southcoast Region Design and Engineering Services (2300)
 FY2018 Governor's Request

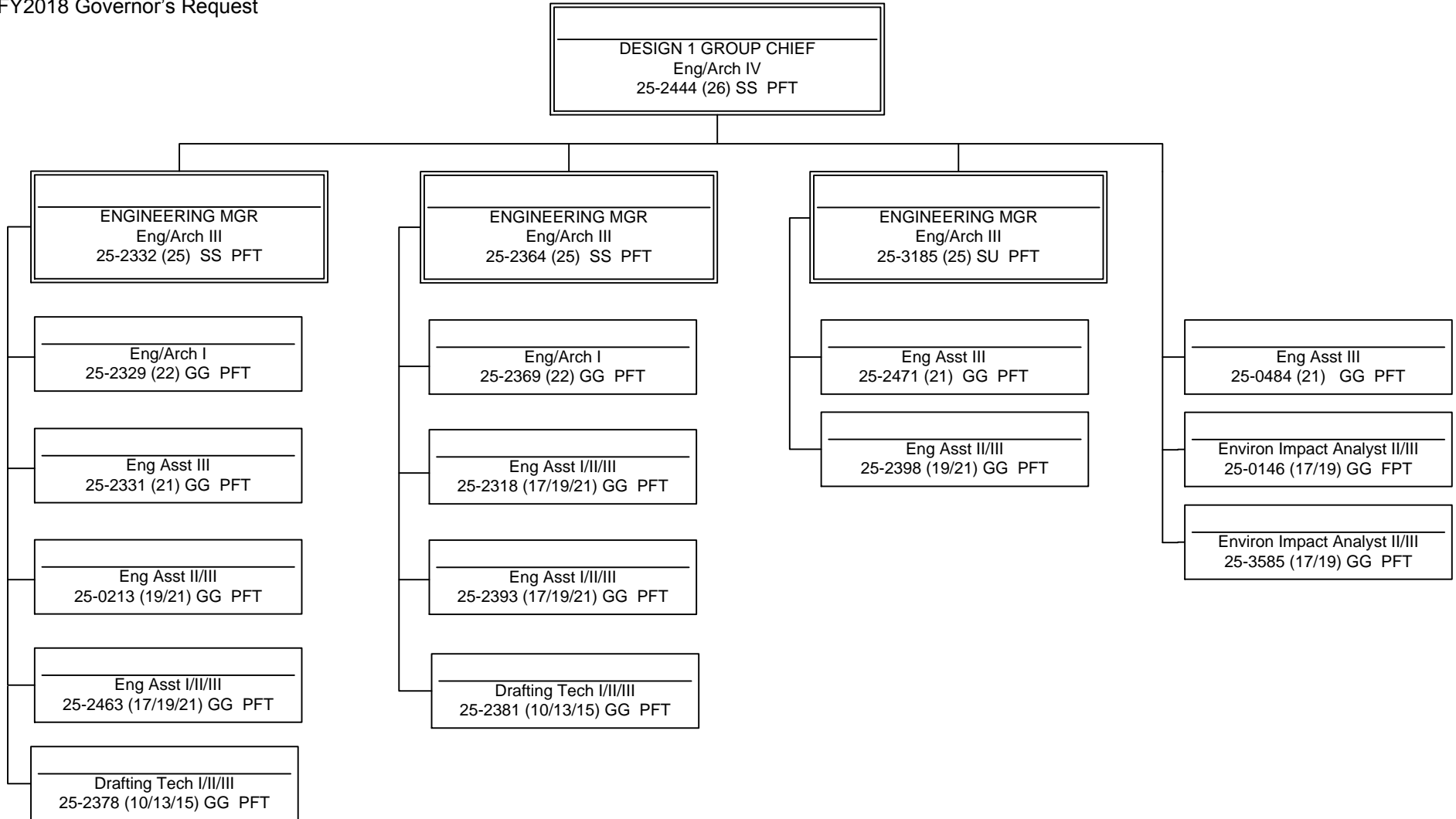


CHART 2

Positions	Total
Full-Time	18
Seasonal	0
Total	18

Department of Transportation and Public Facilities
 RDU: Design, Engineering and Construction
 Component: Southcoast Region Design and Engineering Services (2300)
 FY2018 Governor's Request

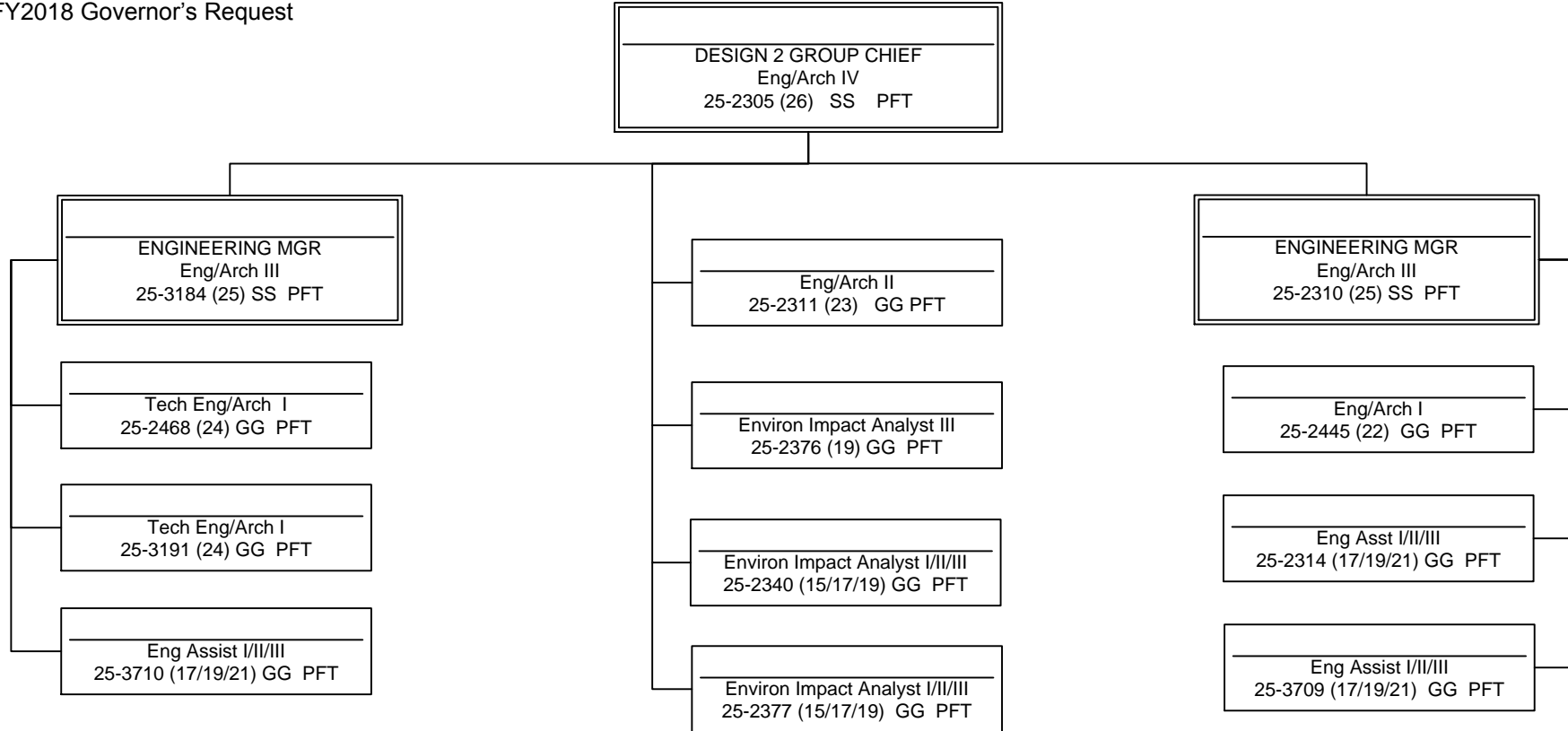


CHART 3

Positions	Total
Full-Time	13
Seasonal	0
Total	13

Department of Transportation and Public Facilities
 RDU: Design, Engineering and Construction
 Component: Southcoast Region Design and Engineering Services (2300)
 FY2018 Governor's Request

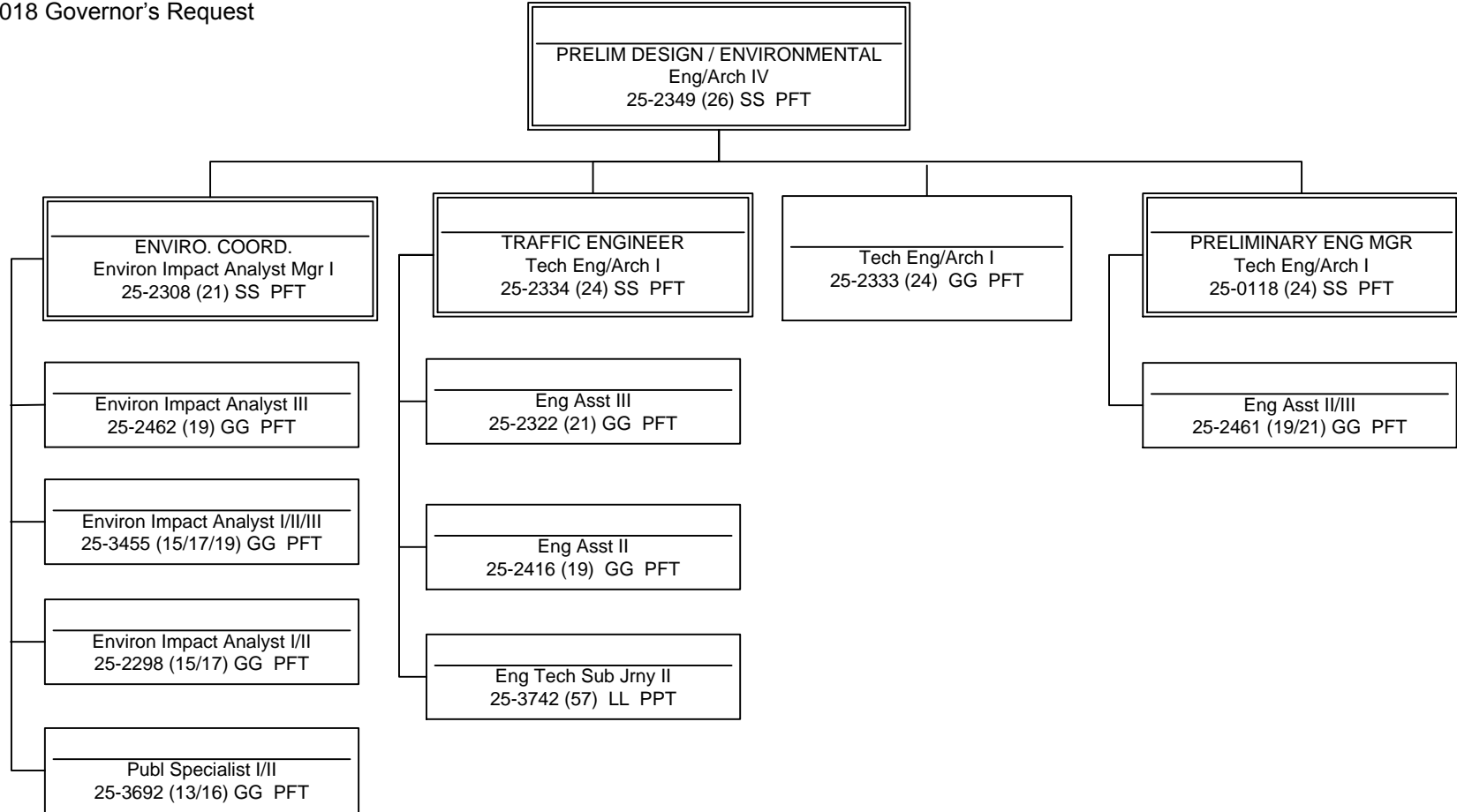


CHART 4

Positions	Total
Full-Time	12
Seasonal	1
Total	13

Department of Transportation and Public Facilities
 RDU: Design, Engineering and Construction
 Component: Southcoast Region Design and Engineering Services (2300)
 FY2018 Governor's Request

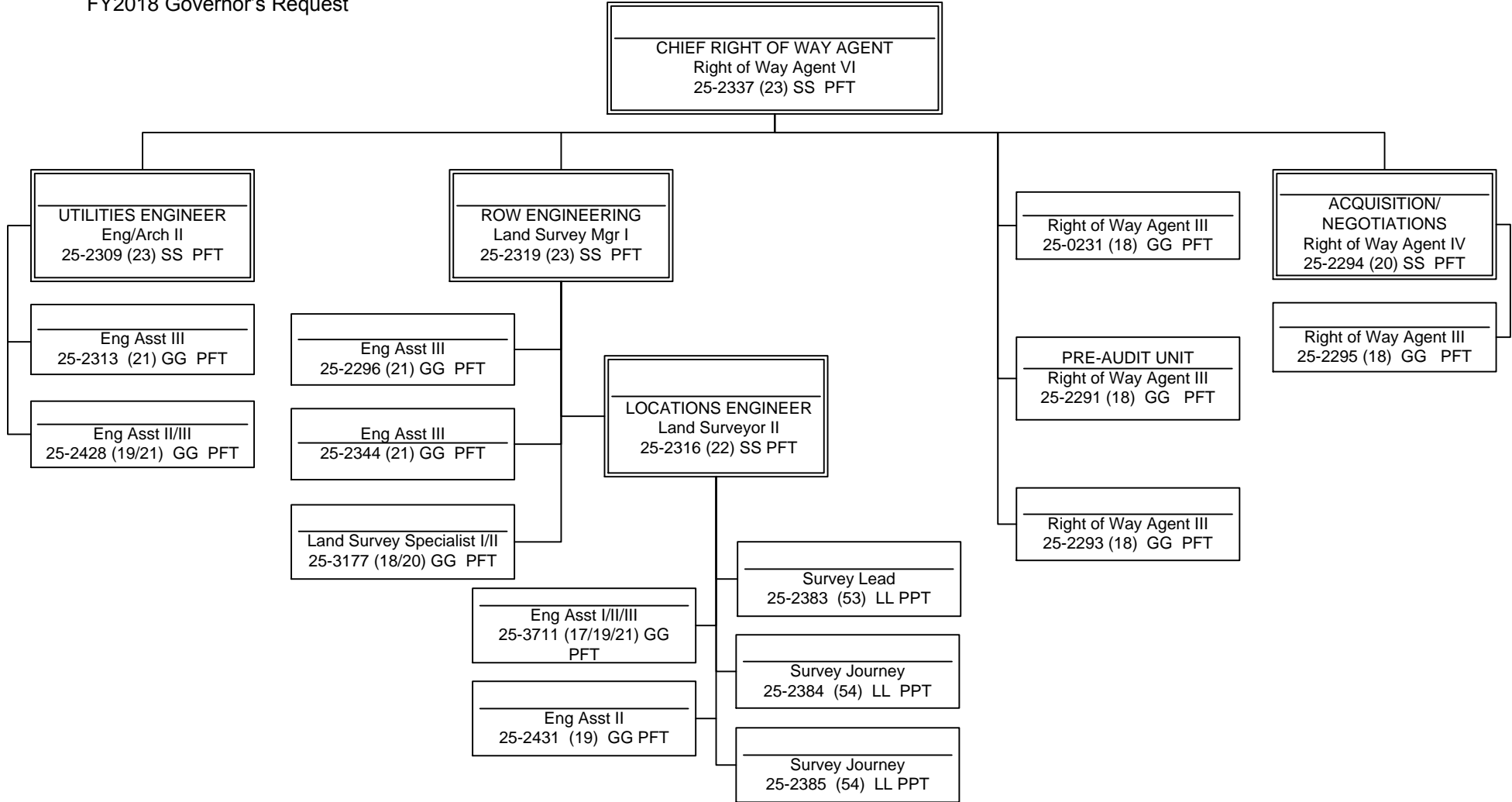


CHART 5

Positions	Total
Full-Time	16
Seasonal	3
Total	19

Department of Transportation and Public Facilities
 RDU: Design, Engineering and Construction
 Component: Southcoast Region Design and Engineering Services (2300)
 FY2018 Governor's Request

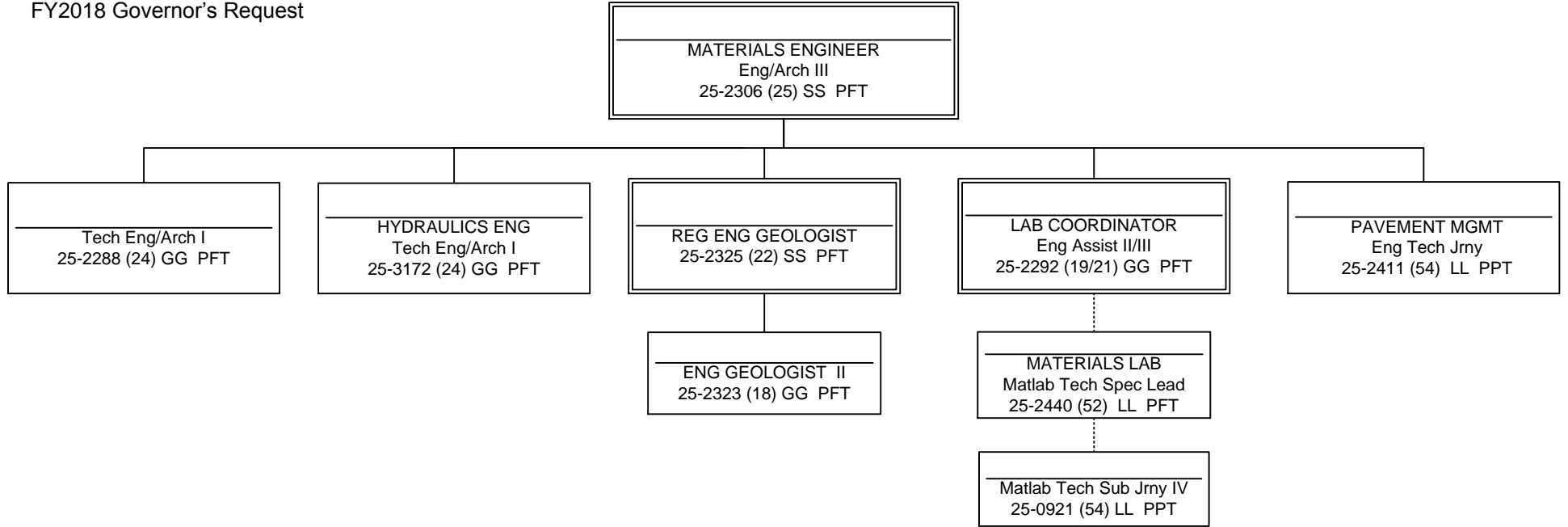


CHART 6

Positions	Total
Full-Time	7
Seasonal	2
Total	9

Department of Transportation and Public Facilities
RDU: Design, Engineering and Construction
Component: Southcoast Region Design and Engineering Services (2300)
FY2018 Governor's Request

SPECIAL PROJECTS

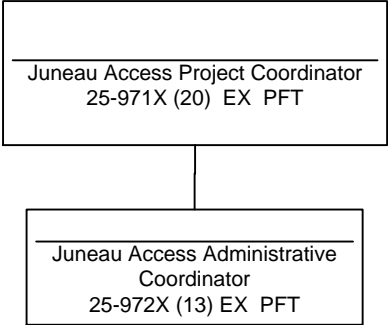


CHART 7

Positions	Total
Full-Time	2
Seasonal	0
Non Permanent	0
Total	2