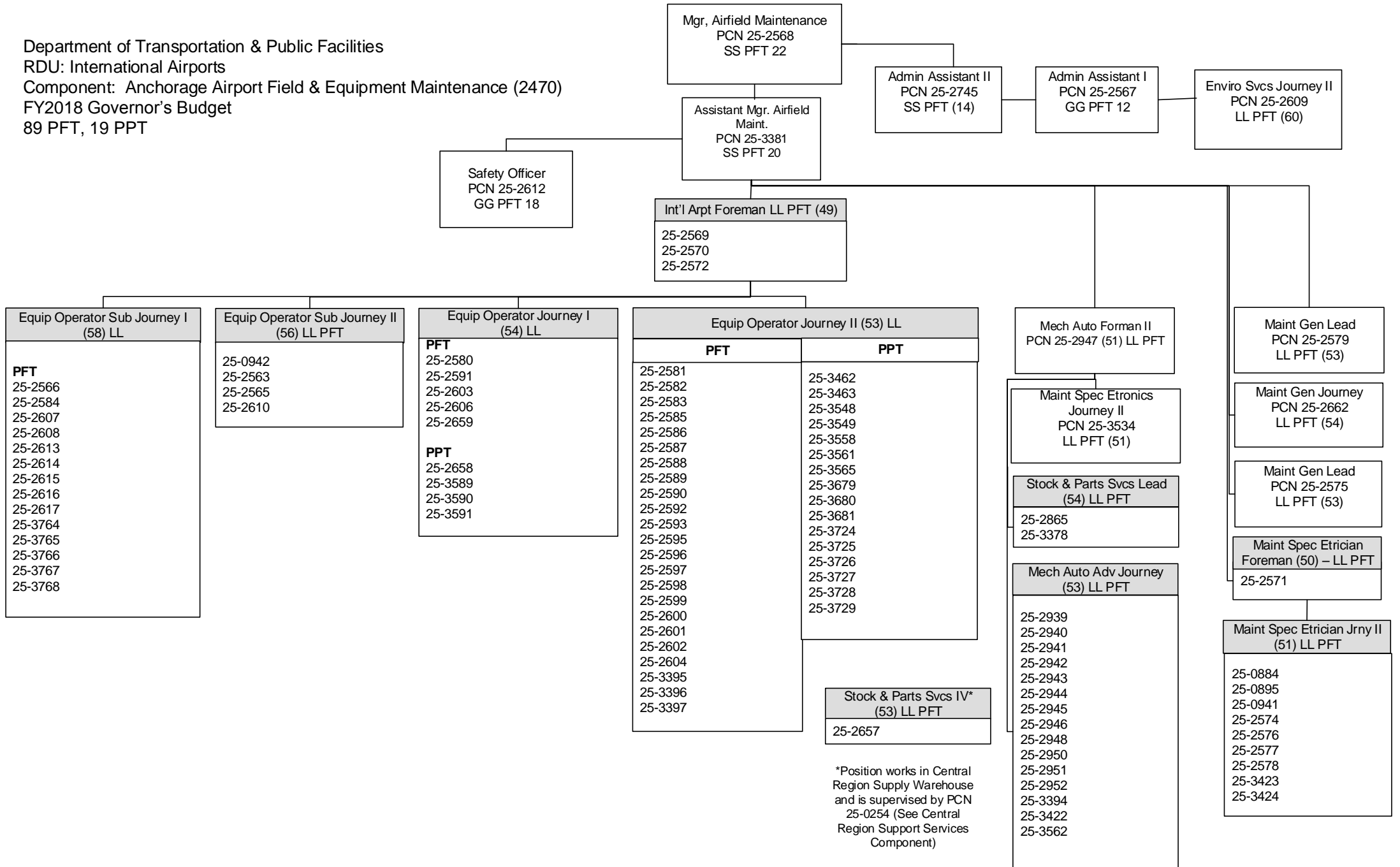


Department of Transportation & Public Facilities  
 RDU: International Airports  
 Component: Anchorage Airport Field & Equipment Maintenance (2470)  
 FY2018 Governor's Budget  
 89 PFT, 19 PPT



\*Position works in Central Region Supply Warehouse and is supervised by PCN 25-0254 (See Central Region Support Services Component)