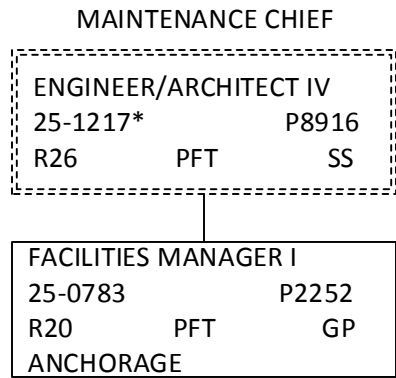


**DEPARTMENT OF TRANSPORTATION & PUBLIC FACILITIES**  
**RDU: HIGHWAYS, AVIATION, AND FACILITIES**  
**COMPONENT: WHITTIER ACCESS AND TUNNEL (2510)**  
**FY2018 GOVERNOR'S BUDGET**

COMPONENT TOTAL	
FULL TIME POSITIONS:	1
PART TIME POSITIONS:	0
NON PERM POSITIONS:	0
TOTAL	1



\*PCN 25-1217 is budgeted in the Central Region Highways and Aviation budget component