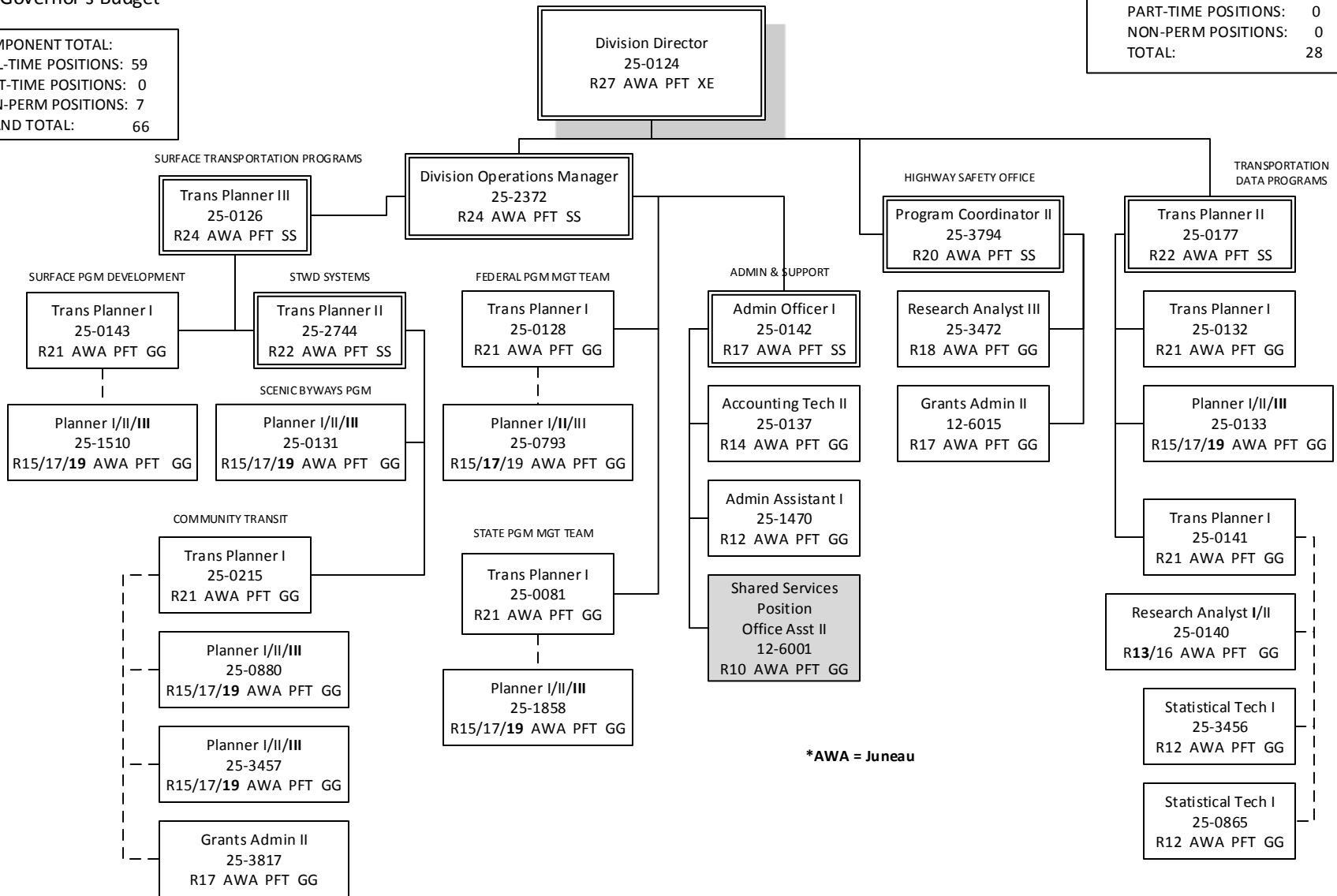


Department of Transportation & Public Facilities  
 RDU: Administration and Support  
 COMPONENT: Program Development (2762)  
 FY2018 Governor's Budget

COMPONENT TOTAL:  
 FULL-TIME POSITIONS: 59  
 PART-TIME POSITIONS: 0  
 NON-PERM POSITIONS: 7  
 GRAND TOTAL: 66

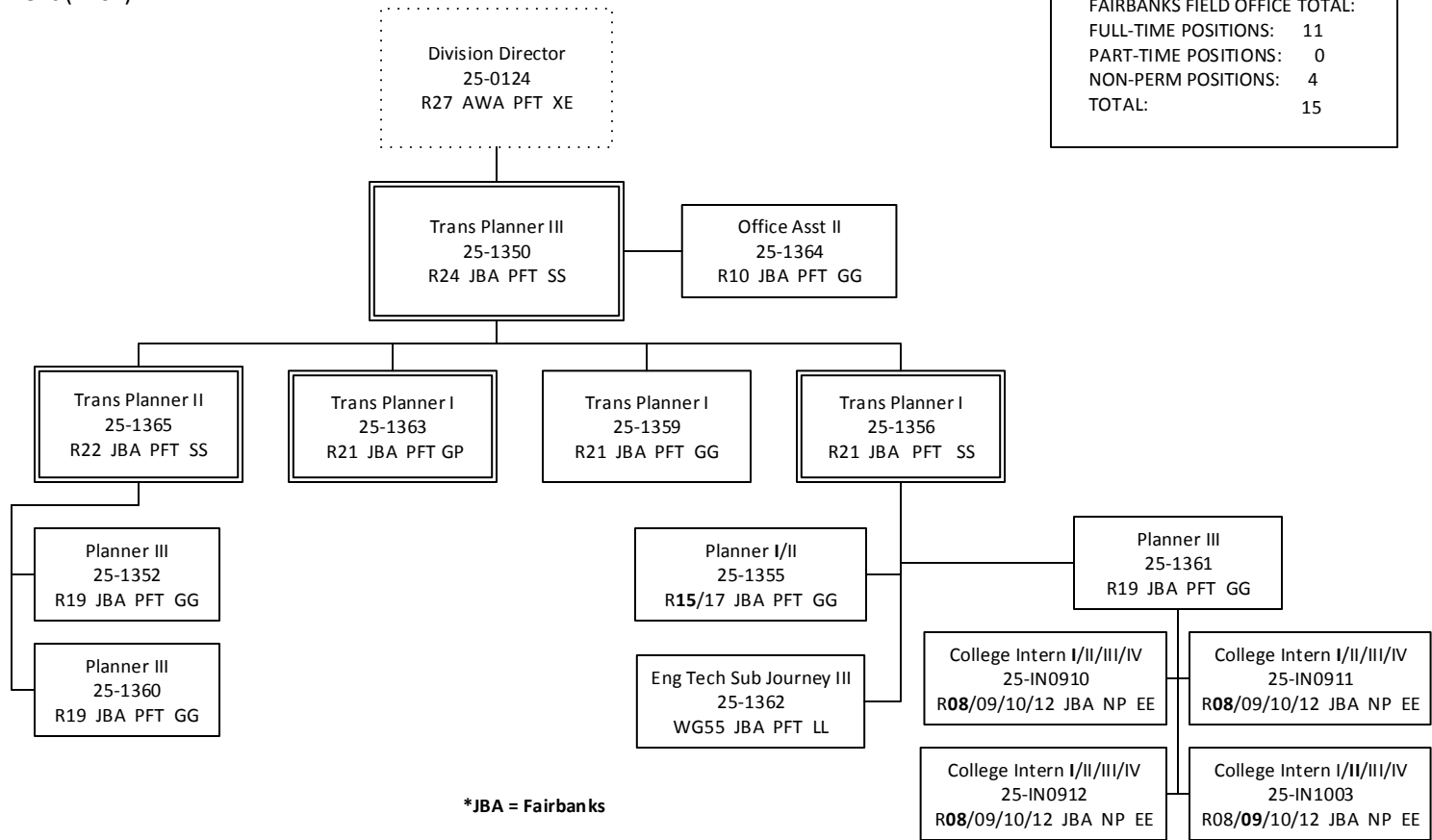
HEADQUARTERS TOTAL:  
 FULL-TIME POSITIONS: 28  
 PART-TIME POSITIONS: 0  
 NON-PERM POSITIONS: 0  
 TOTAL: 28



\*AWA = Juneau

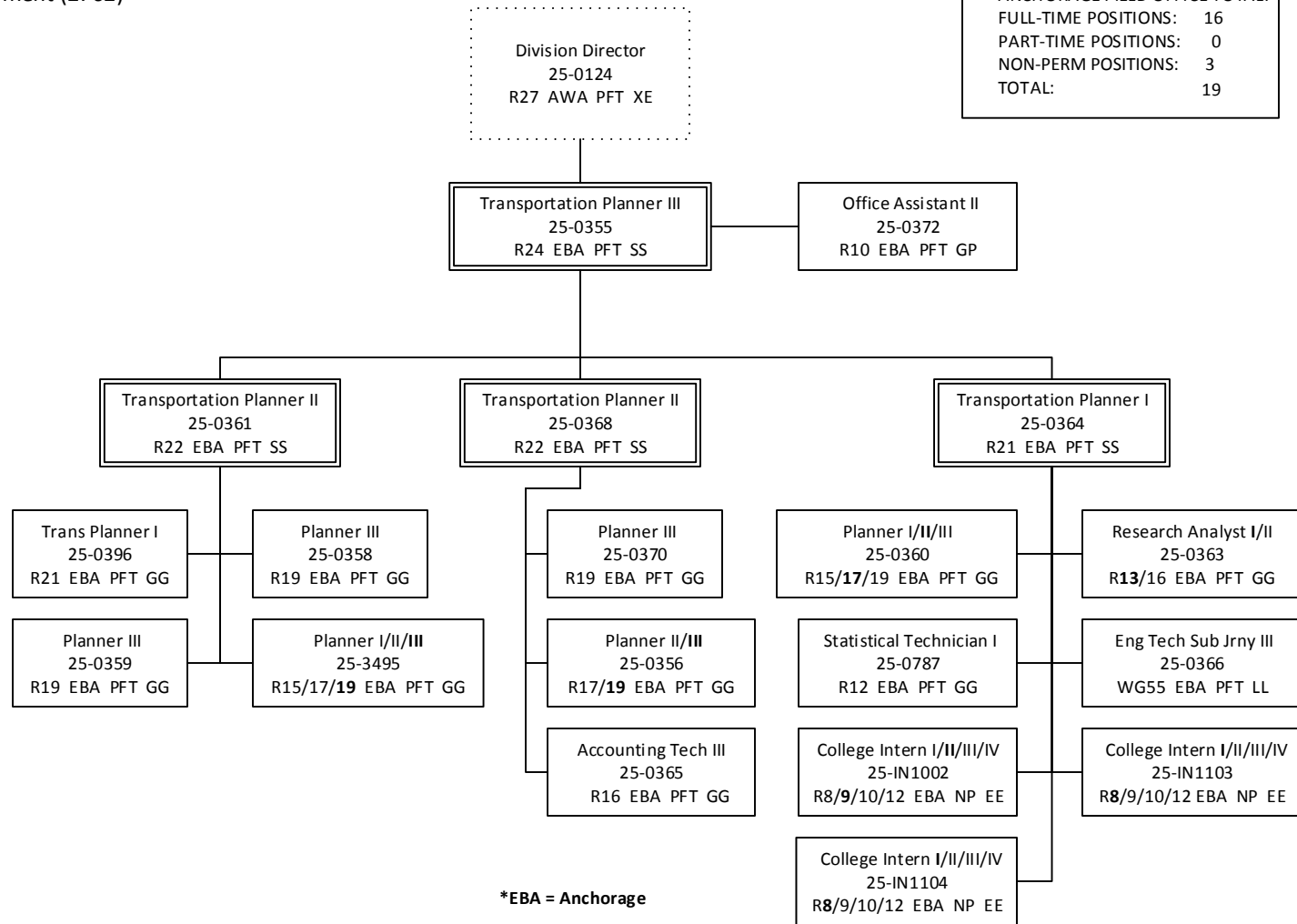
Department of Transportation & Public Facilities  
 RDU: Administration and Support  
 COMPONENT: Program Development (2762)  
 FY2018 Governor's Budget  
 Fairbanks Field Office

FAIRBANKS FIELD OFFICE TOTAL:	
FULL-TIME POSITIONS:	11
PART-TIME POSITIONS:	0
NON-PERM POSITIONS:	4
TOTAL:	15



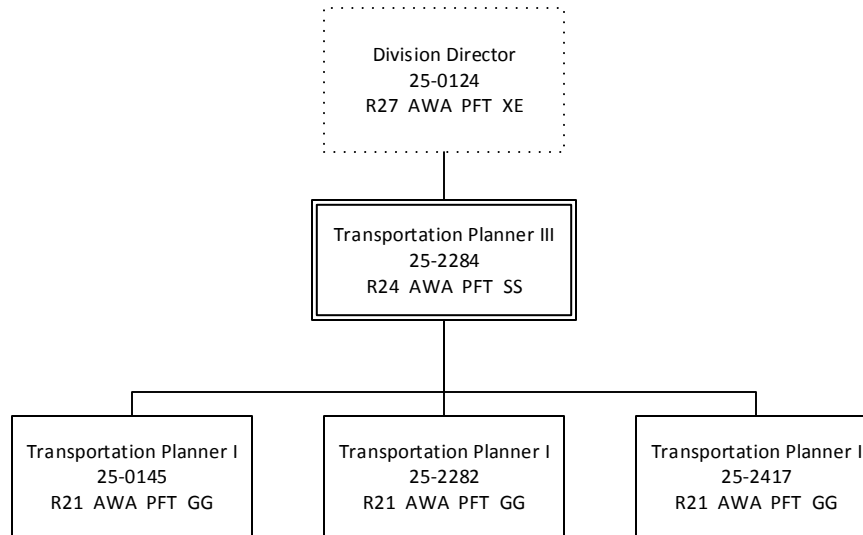
Department of Transportation & Public Facilities  
 RDU: Administration and Support  
 COMPONENT: Program Development (2762)  
 FY2018 Governor's Budget  
 Anchorage Field Office

ANCHORAGE FIELD OFFICE TOTAL:	
FULL-TIME POSITIONS:	16
PART-TIME POSITIONS:	0
NON-PERM POSITIONS:	3
TOTAL:	19



Department of Transportation & Public Facilities  
RDU: Administration and Support  
COMPONENT: Program Development (2762)  
FY2018 Governor's Budget  
Juneau Field Office

JUNEAU FIELD OFFICE TOTAL:	
FULL-TIME POSITIONS:	4
PART-TIME POSITIONS:	0
NON-PERM POSITIONS:	0
TOTAL:	4



\*AWA = Juneau