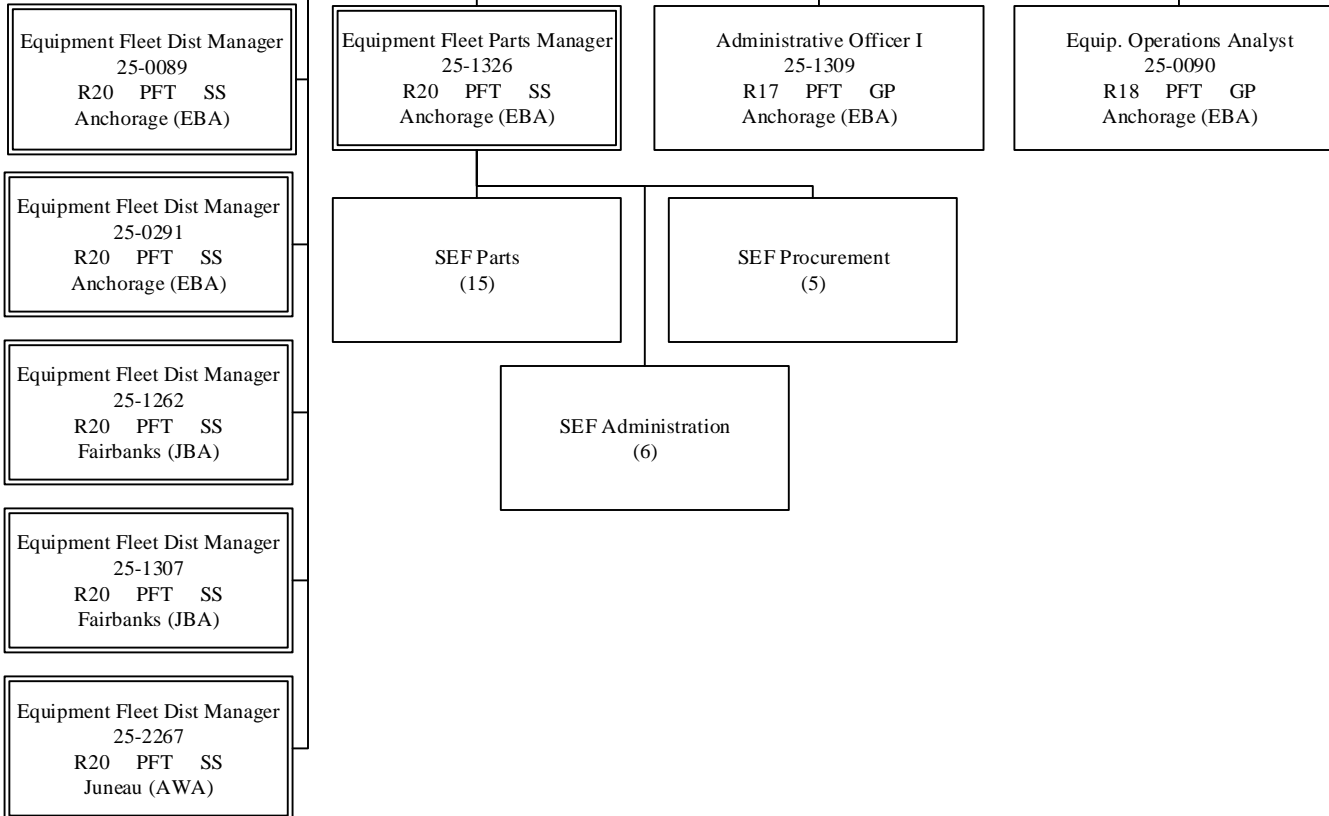


Deputy Commissioner  
 25-0008\*  
 R28 PXFT XE  
 Anchorage (EBA)

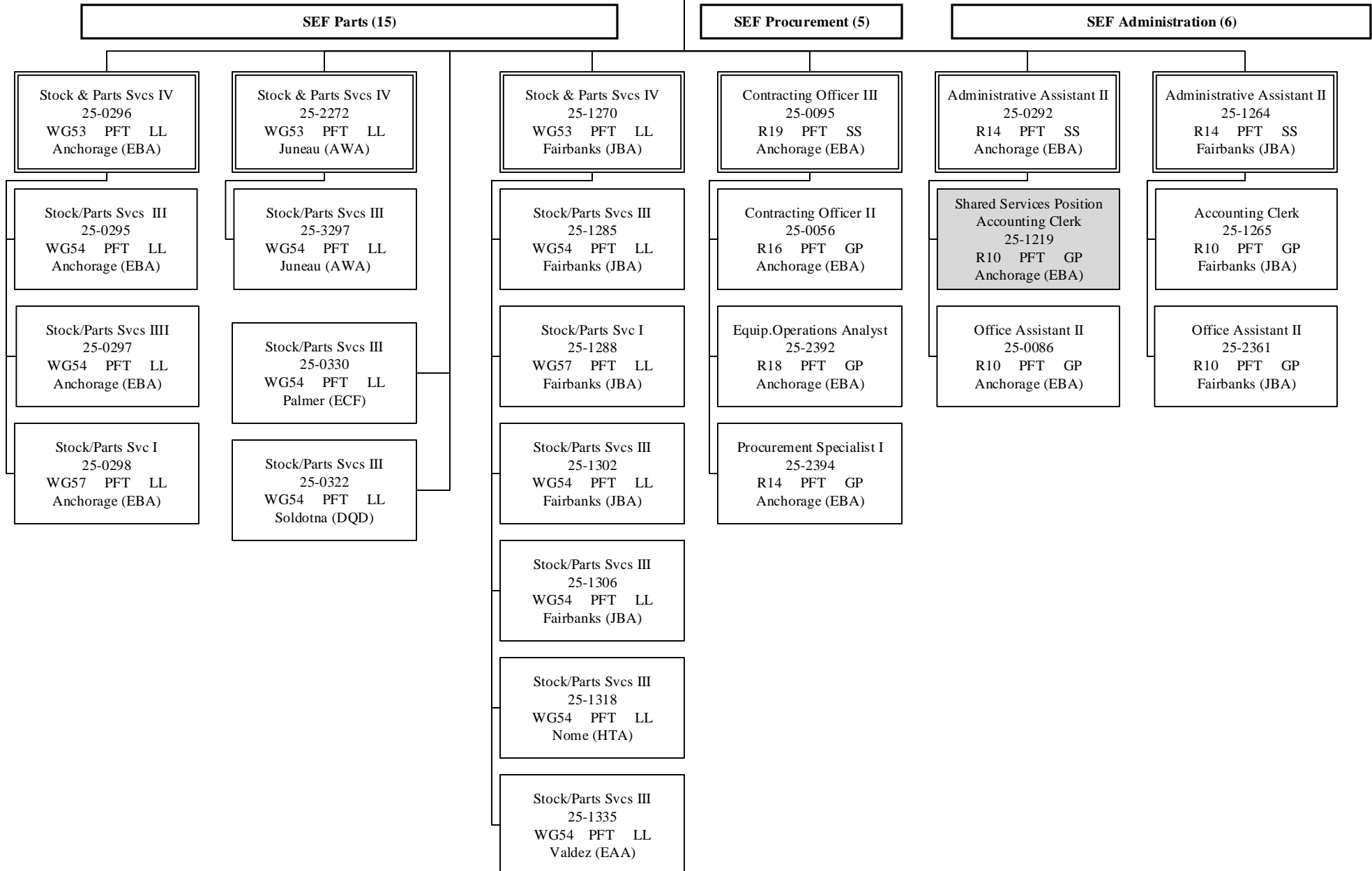
\*PCN budgeted in the Commissioner's  
 Office budget component.

State Equipment Fleet Manager  
 25-0470  
 R23 PFT SS  
 Anchorage (EBA)



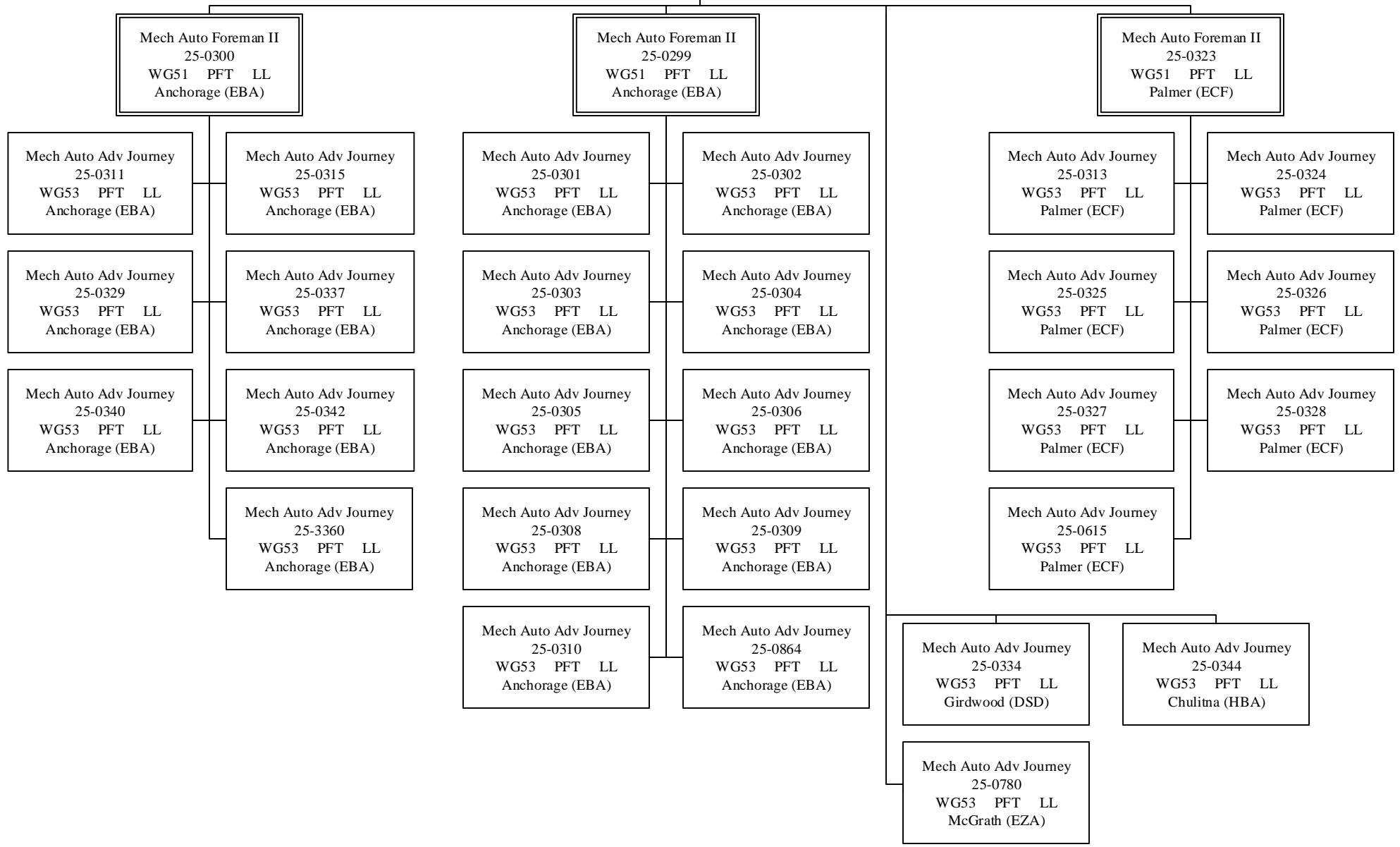
Equipment Fleet Parts Manager  
 25-1326  
 R20 PFT SS  
 Anchorage (EBA)

State Equipment Fleet Manager  
 25-0470  
 R23 PFT SS  
 Anchorage (EBA)



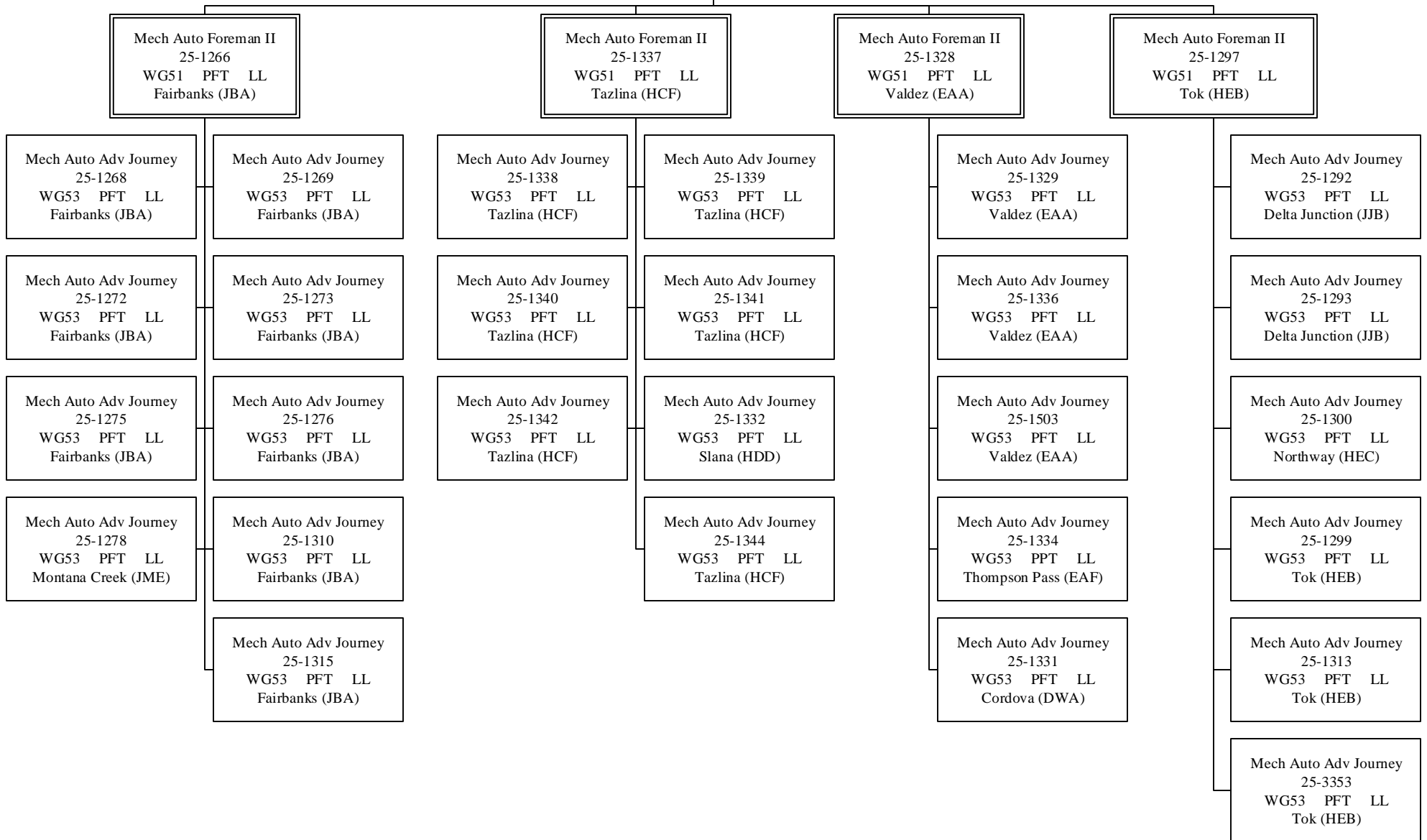
Equipment Fleet Dist Manager  
 25-0089  
 R20 PFT SS  
 Anchorage (EBA)

State Equipment Fleet Manager  
 25-0470  
 R23 PFT SS  
 Anchorage (EBA)



Equipment Fleet Dist Manager  
 25-1262  
 R20 PFT SS  
 Fairbanks (JBA)

State Equipment Fleet Manager  
 25-0470  
 R23 PFT SS  
 Anchorage (EBA)



Equipment Fleet Dist Manager  
 25-1307  
 R20 PFT SS  
 Fairbanks (EBA)

State Equipment Fleet Manager  
 25-0470  
 R23 PFT SS  
 Anchorage (EBA)

