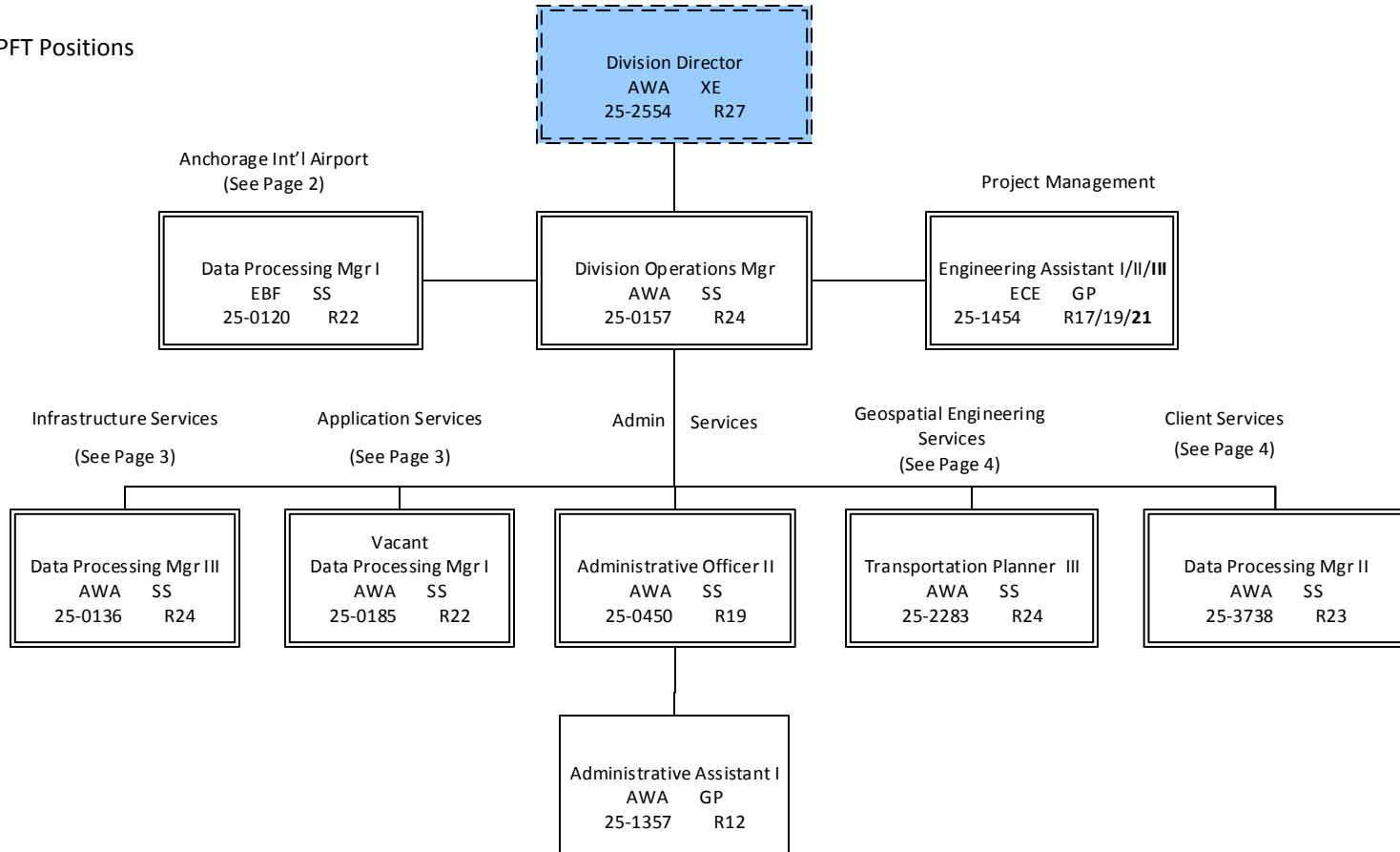


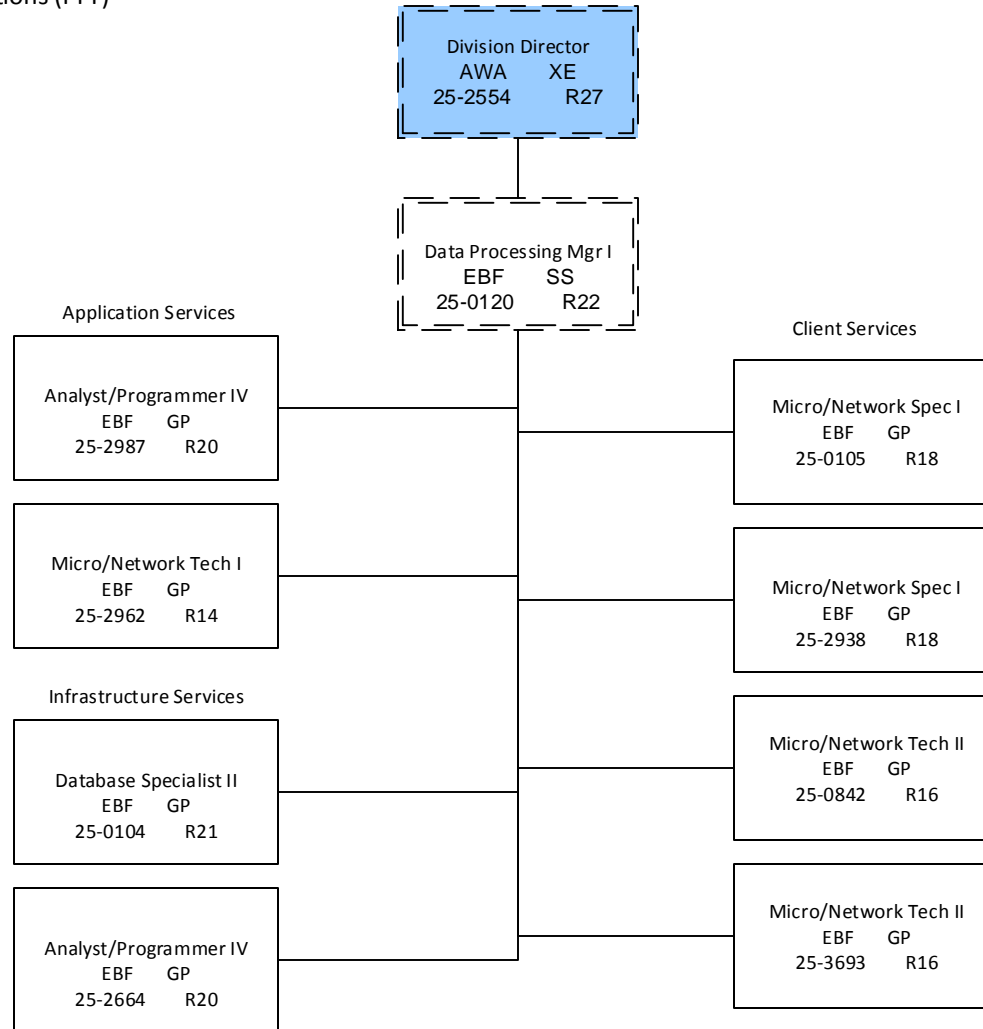
Department of Transportation & Public Facilities
 RDU: Administration and Support (333)
 COMPONENT: Information Systems and Services (540)
 FY2018 Governor
 Component Total - 70 PFT Positions

Legend
 ACA = Ketchikan
 AWA = Juneau
 JBA = Fairbanks
 EBA = Anchorage
 EBF = Anch. Int'l Airport
 ECE = Wasilla



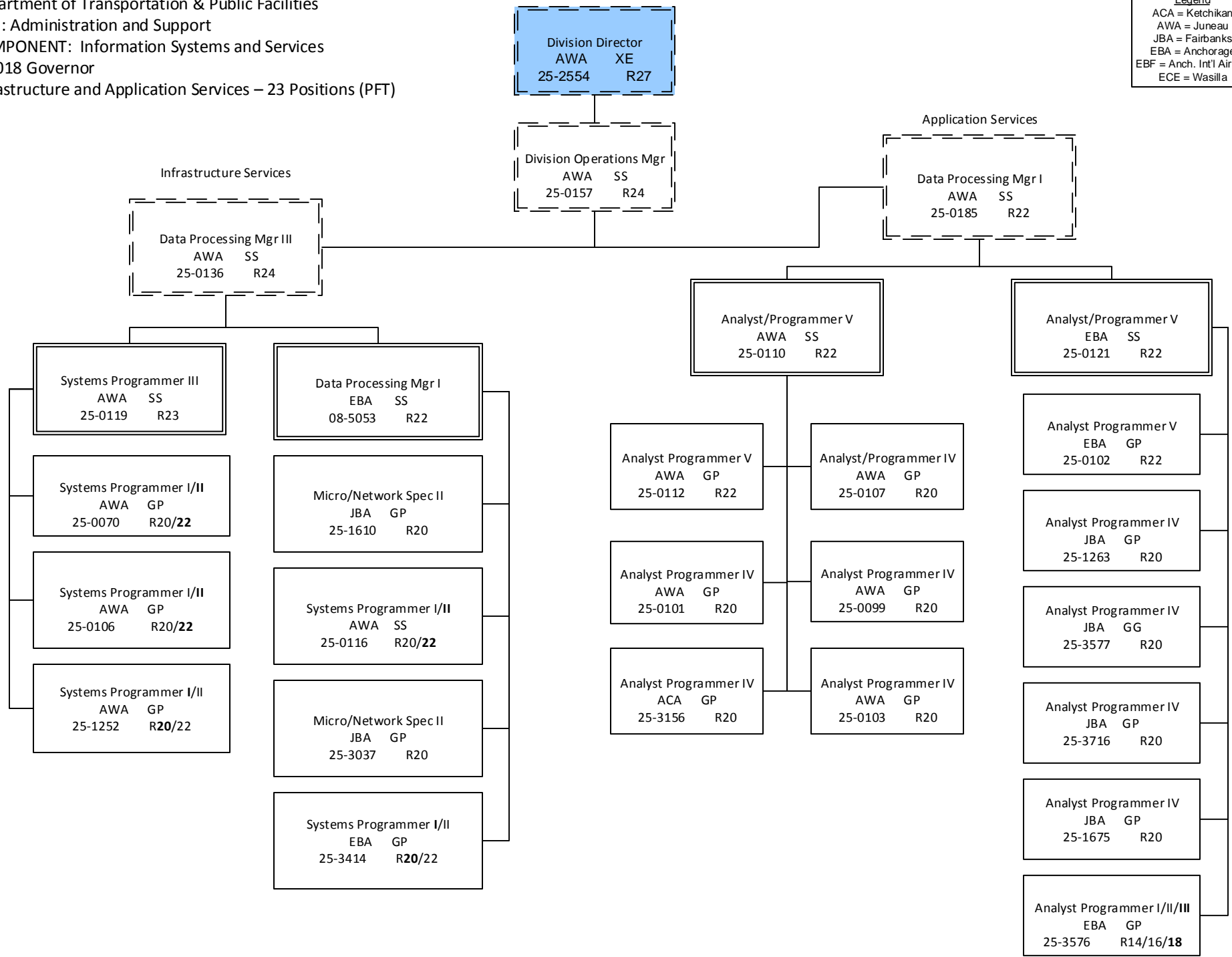
Department of Transportation & Public Facilities
 RDU: Administration and Support (333)
 COMPONENT: Information Systems and Services (540)
 FY2018 Governor
 Anchorage International Airport – 8 Positions (PFT)

Legend
 ACA = Ketchikan
 AWA = Juneau
 JBA = Fairbanks
 EBA = Anchorage
 EBF = Anch. Int'l Airport
 ECE = Wasilla



Department of Transportation & Public Facilities
 RDU: Administration and Support
 COMPONENT: Information Systems and Services
 FY2018 Governor
 Infrastructure and Application Services – 23 Positions (PFT)

Legend
 ACA = Ketchikan
 AWA = Juneau
 JBA = Fairbanks
 EBA = Anchorage
 EBF = Anch. Int'l Airport
 ECE = Wasilla



Department of Transportation & Public Facilities
 RDU: Administration and Support
 COMPONENT: Information Systems and Services
 FY2018 Governor
 Geospatial and Client Services – 30 Positions (PFT)

Legend
 ACA = Ketchikan
 AWA = Juneau
 JBA = Fairbanks
 EBA = Anchorage
 EBF = Anch. Int'l Airport
 ECE = Wasilla

