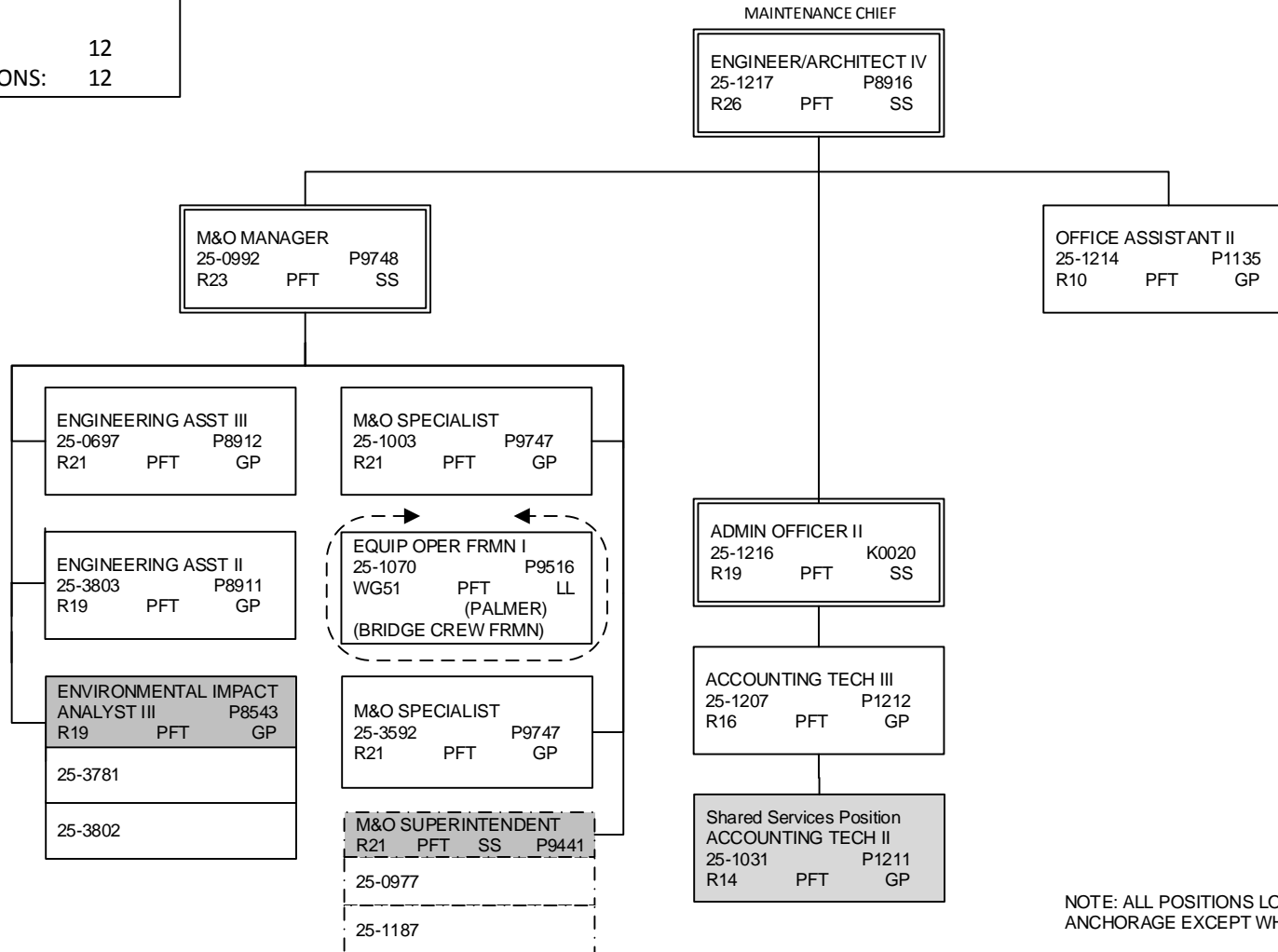


DEPARTMENT OF TRANSPORTATION & PUBLIC FACILITIES  
 RDU: HIGHWAYS, AVIATION AND FACILITIES  
 COMPONENT: CENTRAL REGION HIGHWAYS & AVIATION (564)  
 FY2018 GOVERNOR'S BUDGET

COMPONENT TOTALS	
FULL TIME POSITIONS:	165
PART TIME POSITIONS:	4
NON PERM POSITIONS:	14
TOTAL	185
PAGE TOTAL:	12
FULL TIME POSITIONS:	12

**MAINTENANCE & OPERATIONS  
 ADMINISTRATION  
 Anchorage**



NOTE: ALL POSITIONS LOCATED IN ANCHORAGE EXCEPT WHERE NOTED.

**DEPARTMENT OF TRANSPORTATION AND PUBLIC FACILITIES**  
**RDU: HIGHWAYS, AVIATION AND FACILITIES**  
**COMPONENT: CENTRAL REGION HIGHWAYS & AVIATION (564)**  
**FY2018 GOVERNOR'S BUDGET**

**ANCHORAGE DISTRICT**

TOTAL POSITIONS THIS DISTRICT	
FULL TIME POSITIONS:	50
PART TIME POSITIONS:	4
NON PERM POSITIONS:	4
<b>TOTAL</b>	<b>58</b>

ENGINEER/ARCHITECT IV		
25-1217	P8916	
R26	PFT	SS

M&O SUPERINTENDENT		
25-0981	P9441	
R21	PFT	SS

SAFETY & EMERGENCY		
S&E SUPPORT SPEC		
25-1182	P7852	
R17	PFT	SS

ADMIN ASSISTANT II		
25-1036	K0018	
R14	PFT	GP

OFFICE ASSISTANT II		
25-0980	P1135	
R10	PFT	GP

EQ OP FOREMAN II		
25-1090	P9517	
WG50	PFT	LL

EQ OP JRNY III/LD		
25-1133	P9511	
WG52	PFT	LL

EQ OP JRNY III/LD		
25-1088	P9511	
WG52	PFT	LL

EQ OP JRNY III/LD		
25-3434	P9511	
WG52	PFT	LL

EQ OP JRNY III/LD		
25-1068	P9511	
WG52	PFT	LL

SILVERTIP 1 AIRPORT		
EQ OP JRNY III/LD		
25-1041	P9511	
WG52	PFT	LL

GIRDWOOD 2 APTS		
EQ OP JRNY III/LD		
25-1096	P9511	
WG52	PFT	LL

EQ OP JRNY II P9511		
WG53	PFT	LL
25-1071		
25-1083		
25-1123		
25-1134		
25-1162		

EQ OP JRNY II P9511		
WG53	PFT	LL
25-0982		
25-1072		
25-1073		
25-1089		
25-1142		

EQ OP JRNY II P9511		
WG53	PFT	LL
25-1030		
25-1136		
25-1146		

EQ OP JRNY II P9511		
WG53	PFT	LL
25-0997		
25-1077		
25-1137		
25-1138		

EQ OP JRNY II P9511		
WG53	PFT	LL
25-1025		
25-1042		
25-1045		
25-1080		

EQ OP JRNY II P9511		
WG53	PFT	LL
25-1044		
25-1097		
25-1098		
25-3432		
25-3433		

EQ OP JRNY I P9511		
WG54	PFT	LL
25-1079		

EQ OP JRNY I P9511		
WG54	PFT	LL
25-1135		

EQ OP JRNY I P9511		
WG54	PFT	LL
25-1075		
25-1084		
25-1086		
25-1161		

EQ OP JRNY I P9511		
WG54	PFT	LL
25-1009		
25-1078		
25-1081		

EQ OP JRNY I P9511		
WG54	PFT	LL
25-1009		

EQ OP JRNY I / II FLEX		
WG54/53	P9511	LL
PFT		
25-1099		

MAINT SPEC		
ELECTRICIAN JRNY II		
WG51	PFT	LL P9325
25-1007		
25-1008		

EQ OP JRNY II P9511		
WG53	PFT	LL
25-1082		

EQ OP SUB JRNY I P9511		
WG58	NP	LL
25-N10056		
25-N10057		
25-N10058		
25-N10059		

EQ OP JRNY I P9511		
WG54	PPT	LL
25-3782		
25-3783		
25-3785		
25-3788		

NOTE: ALL POSITIONS LOCATED IN ANCHORAGE EXCEPT WHERE NOTED.

DEPARTMENT OF TRANSPORTATION AND PUBLIC FACILITIES  
 RDU: HIGHWAYS, AVIATION AND FACILITIES  
 COMPONENT: CENTRAL REGION HIGHWAYS & AVIATION (564)  
 FY2018 GOVERNOR'S BUDGET

MATSU DISTRICT

TOTAL POSITIONS THIS DISTRICT  
 FULL TIME POSITIONS: 38  
 NON PERM POSITIONS: 4  
 TOTAL 42

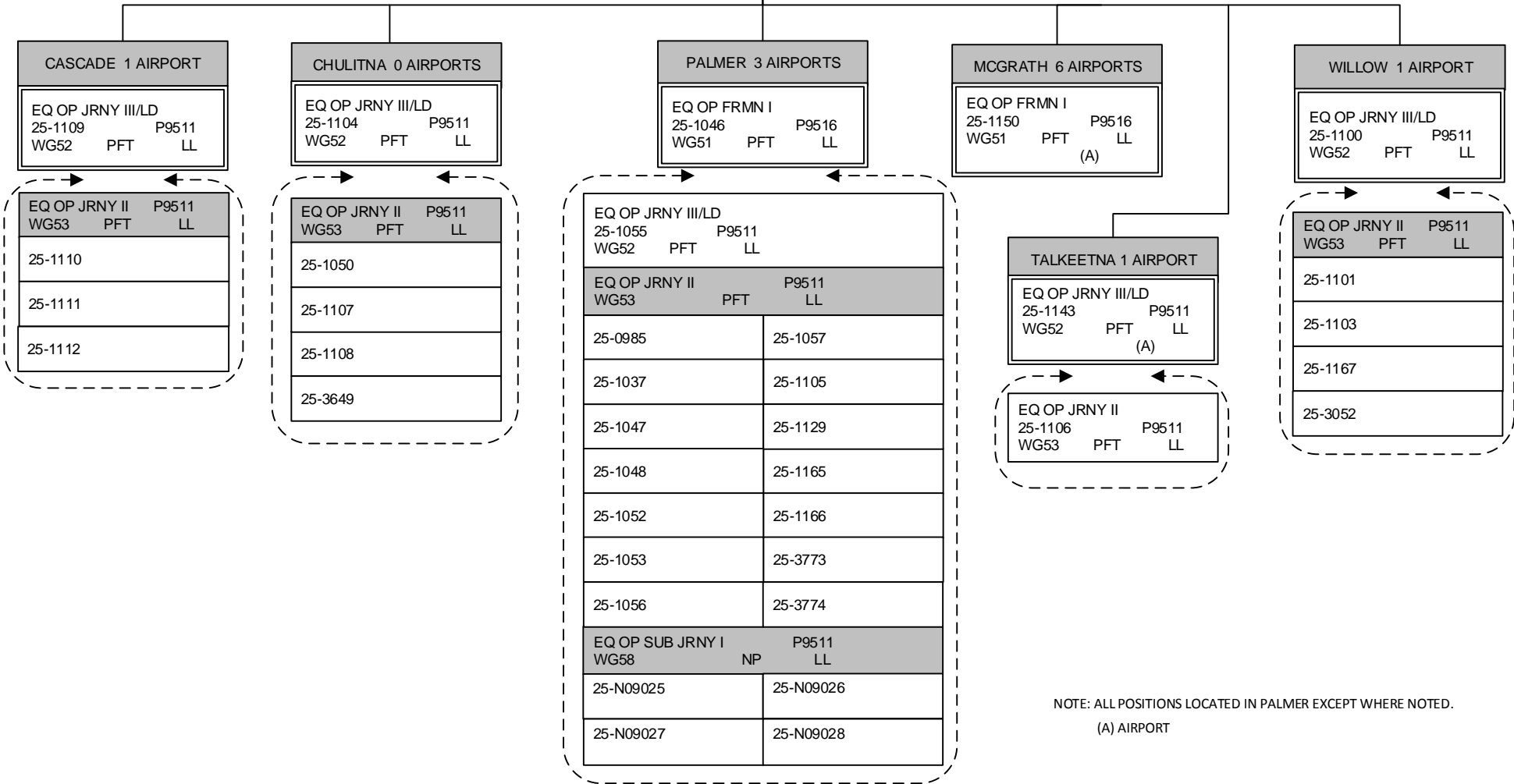
M&O MANAGER  
 25-0992 P9748  
 R23 PFT SS

M&O SUPERINTENDENT  
 25-1187 P9441  
 R21 PFT SS

MAINT SPEC ELEC JRNY II P9325  
 WG51 PFT LL (DISTRICTWIDE)  
 25-0549  
 25-1102

ACCT TECH II  
 25-0979 P1211  
 R14 PFT GP

OFFICE ASSISTANT II  
 25-0935 P1135  
 R10 PFT GP



NOTE: ALL POSITIONS LOCATED IN PALMER EXCEPT WHERE NOTED.  
 (A) AIRPORT

**DEPARTMENT OF TRANSPORTATION AND PUBLIC FACILITIES**  
**RDU: HIGHWAYS, AVIATION AND FACILITIES**  
**COMPONENT: CENTRAL REGION HIGHWAYS & AVIATION (564)**  
**FY2018 GOVERNOR'S BUDGET**

**PENINSULA DISTRICT**

TOTAL POSITIONS THIS DISTRICT  
 FULL TIME POSITIONS: 43  
 NON PERM POSITIONS: 6  
 TOTAL 49

M&O MANAGER  
 25-0992 P9748  
 R23 PFT SS

M&O SUPERINTENDENT  
 25-0977 P9441  
 R21 PFT SS

MTN SPEC ELECTRICIAN JRNY II  
 P9325 WG51 PFT LL  
 (DISTRICTWIDE)  
 25-0565  
 25-1021

ACCT TECH II  
 25-1010 P1211  
 R14 PFT GG

OFFICE ASSISTANT II  
 25-0983 P1135  
 R10 PFT GP

HOMER 1 AIRPORT  
 EQ OP FRMN II  
 25-1141 P9517  
 WG50 PFT LL

NINILCHIK 1 AIRPORT  
 EQ OP JRNY III/LD  
 25-1127 P9511  
 WG52 PFT LL

SOLDOTNA 1 AIRPORT  
 EQ OPER FRMN I  
 25-1012 P9516  
 WG51 PFT LL

NORTH KENAI  
 EQ OP JRNY III/LD  
 25-1115 P9511  
 WG52 PFT LL

CROWN POINT (SEWARD)  
 3 AIRPORTS  
 EQ OP JRNY III/LD  
 25-1118 P9511  
 WG52 PFT LL

OFFICE ASSIST II P1135  
 25-0569 R10 PFT GP  
 EQ OP JRNY III/LD P9511  
 WG52 PFT LL  
 25-1017 (A)  
 25-1060 (A)  
 25-1066 (A)

EQ OP JRNY II P9511  
 WG53 PFT LL  
 25-1019  
 25-1130  
 25-1177

EQ OP JRNY III/LD P9511  
 25-1026 WG52 PFT LL  
 EQ OP JRNY II P9511  
 25-1026 WG53 PFT LL  
 EQ OP SUB JRNY I P9511  
 25-1026 WG58 NP LL  
 25-0998 25-N09019  
 25-1020 25-N09020  
 25-1022 25-N09034  
 25-1064 25-N09035  
 25-1076 25-N09036  
 25-1120 25-N09037  
 25-1126  
 25-3429  
 25-3430

EQ OP JRNY II P9511  
 WG53 PFT LL  
 25-1018  
 25-1153

EQ OP JRNY II P9511  
 WG53 PFT LL  
 25-1091  
 25-1119  
 25-1121

SELDOVIA 3 AIRPORTS  
 EQ OP JRNY III/LD  
 25-1094 P9511  
 WG52 PFT LL

HOMER HIGHWAYS  
 EQ OP JRNY III/LD P9511  
 25-1058 WG52 PFT LL

QUARTZ CREEK 1 APT  
 EQUIP OP JRNY III/LD  
 25-1122 P9511  
 WG52 PFT LL

EQ OP JRNY II P9511  
 WG53 PFT LL  
 25-1061 25-1067  
 25-1062 25-1128  
 25-1065

EQ OP JRNY II P9511  
 WG53 PFT LL  
 25-1013  
 25-1124  
 25-3431

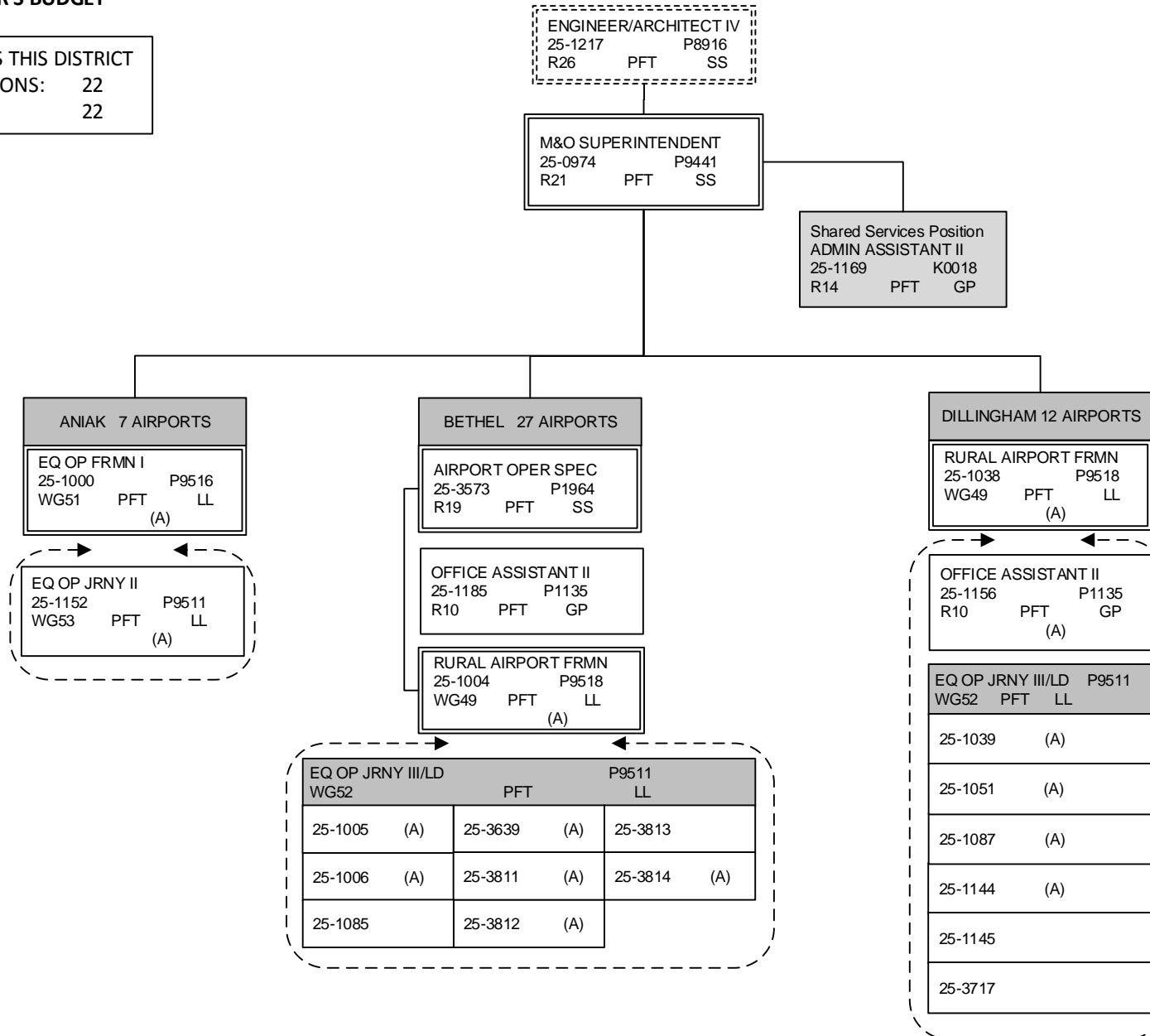
NOTE: ALL POSITIONS LOCATED IN SOLDOTNA EXCEPT WHERE NOTED.

(A) AIRPORT

DEPARTMENT OF TRANSPORTATION AND PUBLIC FACILITIES  
 RDU: HIGHWAYS, AVIATION AND FACILITIES  
 COMPONENT: CENTRAL REGION HIGHWAYS & AVIATION (564)  
 FY2018 GOVERNOR'S BUDGET

SOUTHWEST DISTRICT

TOTAL POSITIONS THIS DISTRICT	
FULL TIME POSITIONS:	22
TOTAL	22



NOTE: POSITIONS LOCATED IN ANCHORAGE  
 EXCEPT WHERE NOTED.

(A) AIRPORT