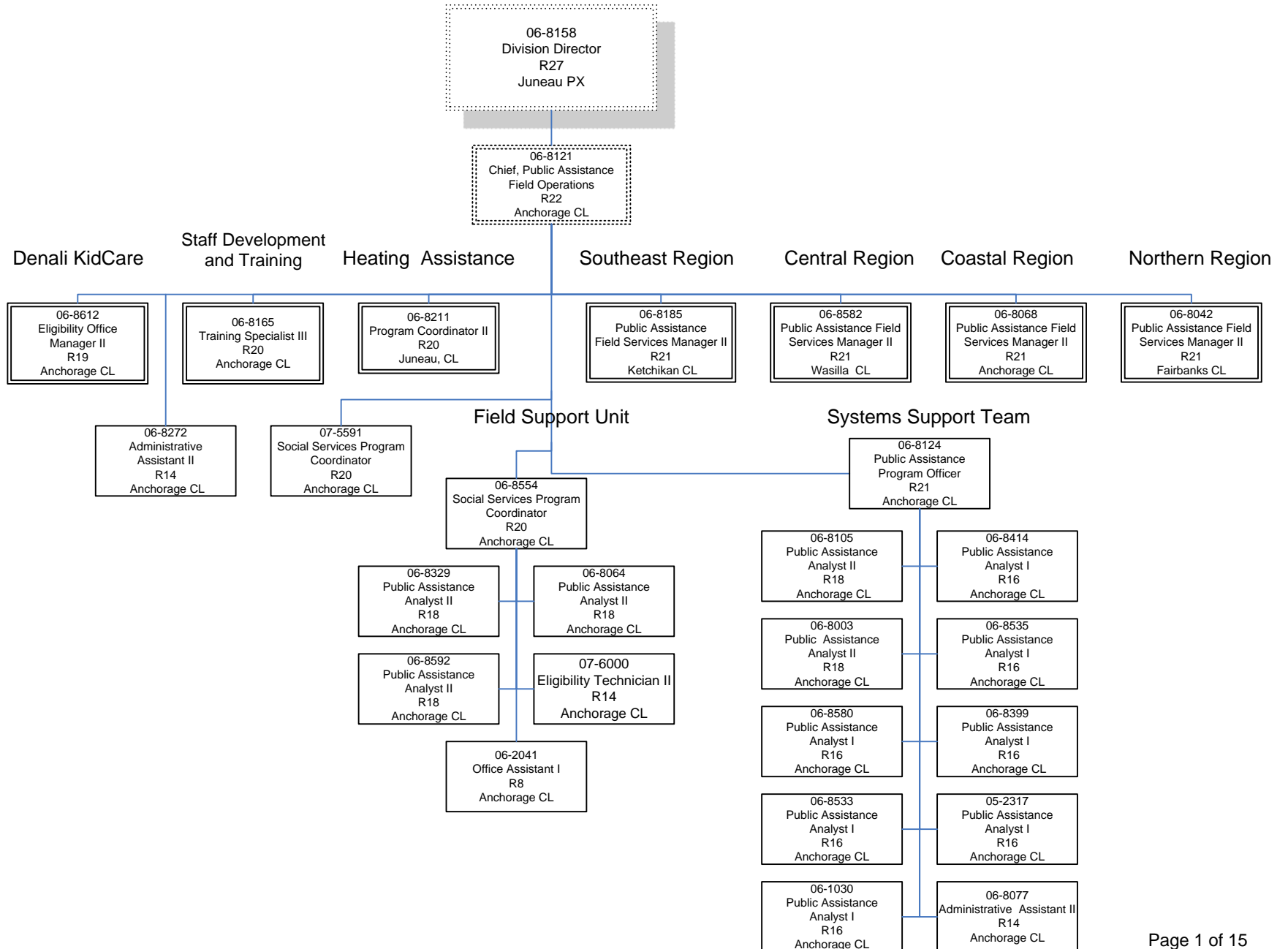
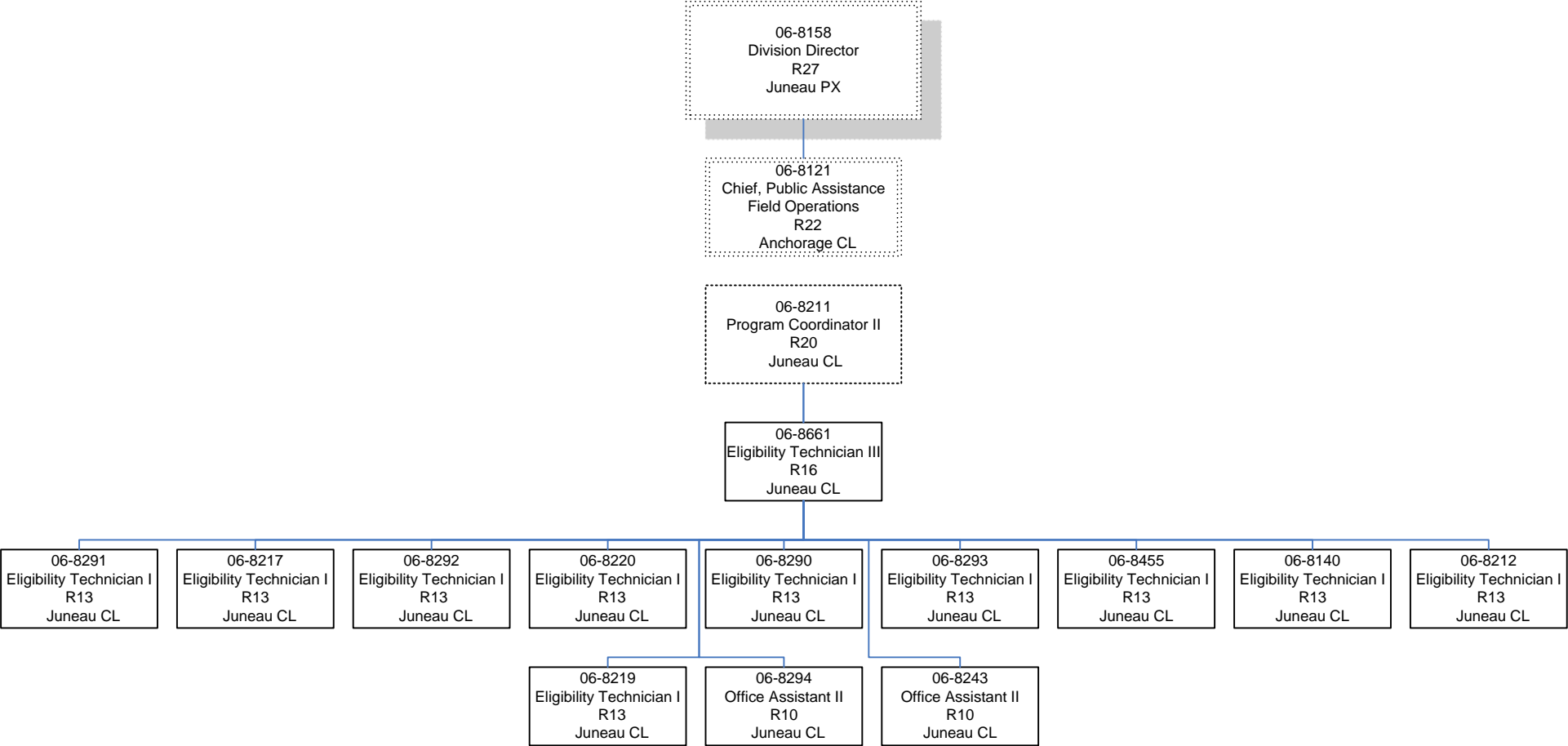


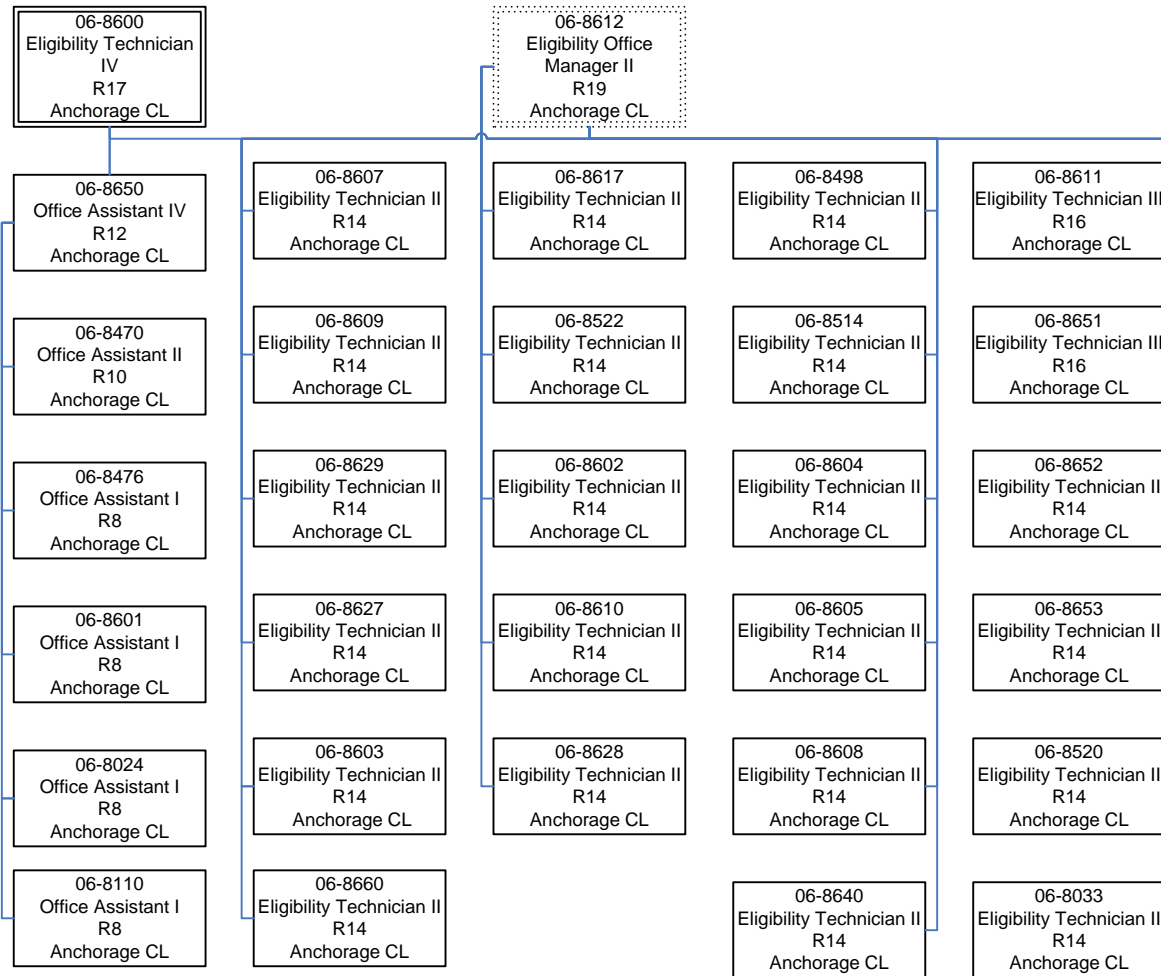
DEPARTMENT OF HEALTH AND SOCIAL SERVICES
 Division of Public Assistance
 Field Services
 Administrative



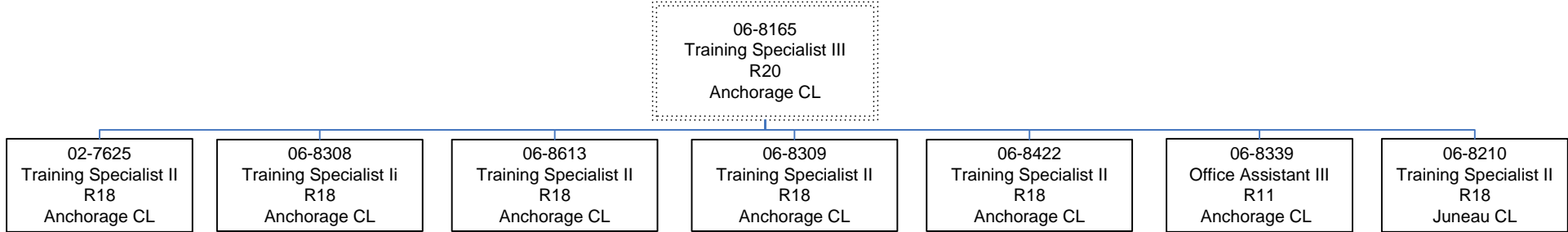
DEPARTMENT OF HEALTH AND SOCIAL SERVICES
 Division of Public Assistance
 Energy Assistance Program/Field Services



DEPARTMENT OF HEALTH AND SOCIAL SERVICES
 Division of Public Assistance
 Field Services
 Coastal Field Office 2



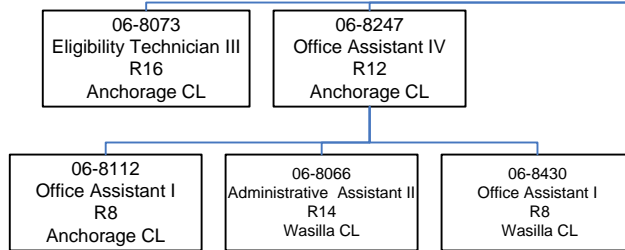
DEPARTMENT OF HEALTH AND SOCIAL SERVICES
Division of Public Assistance
Field Services
Staff Development and Training



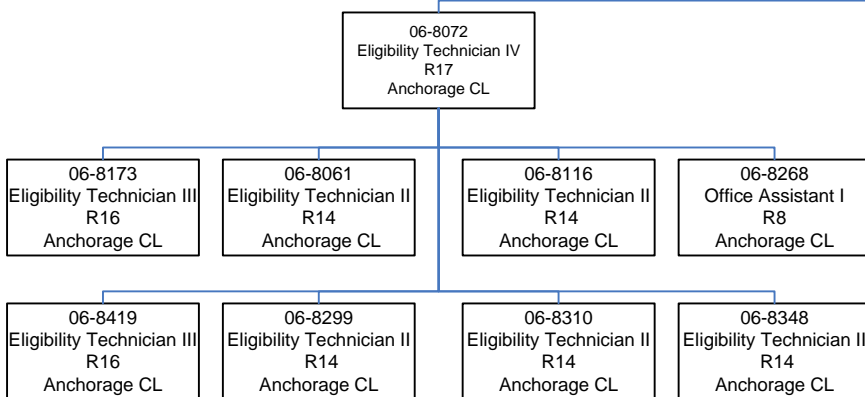
DEPARTMENT OF HEALTH AND SOCIAL SERVICES
 Division of Public Assistance
 Field Services
 Central Region
 Regional Support and Adult Public Assistance

06-8582
 Public Assistance Field
 Services Manager II
 R21
 Wasilla CL

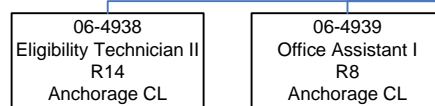
Adult Public Assistance Clerical Team



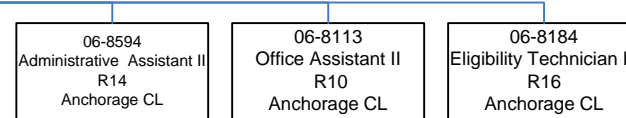
Adult Public Assistance – Team 2



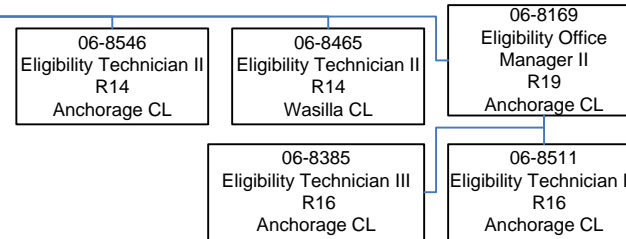
Alaska Native Medical Center – Out-stationed PCN's



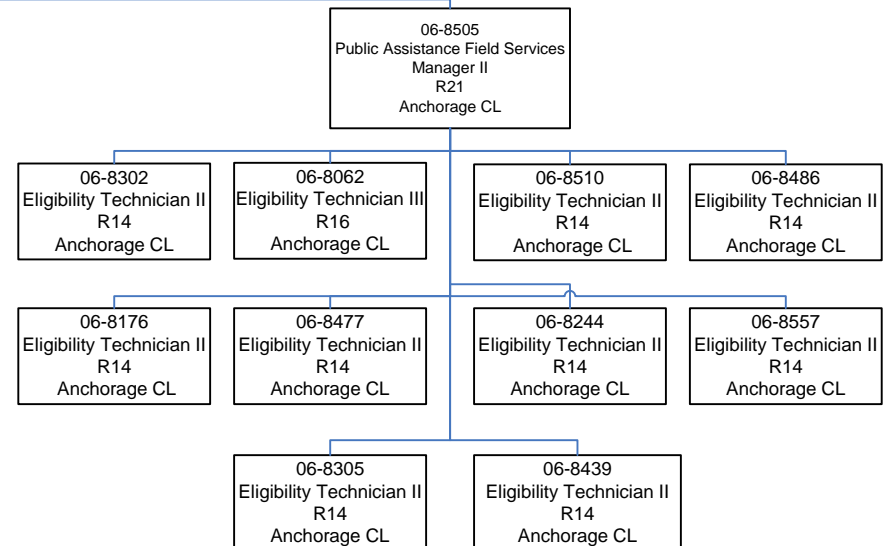
Regional Support



Regional Employment Support

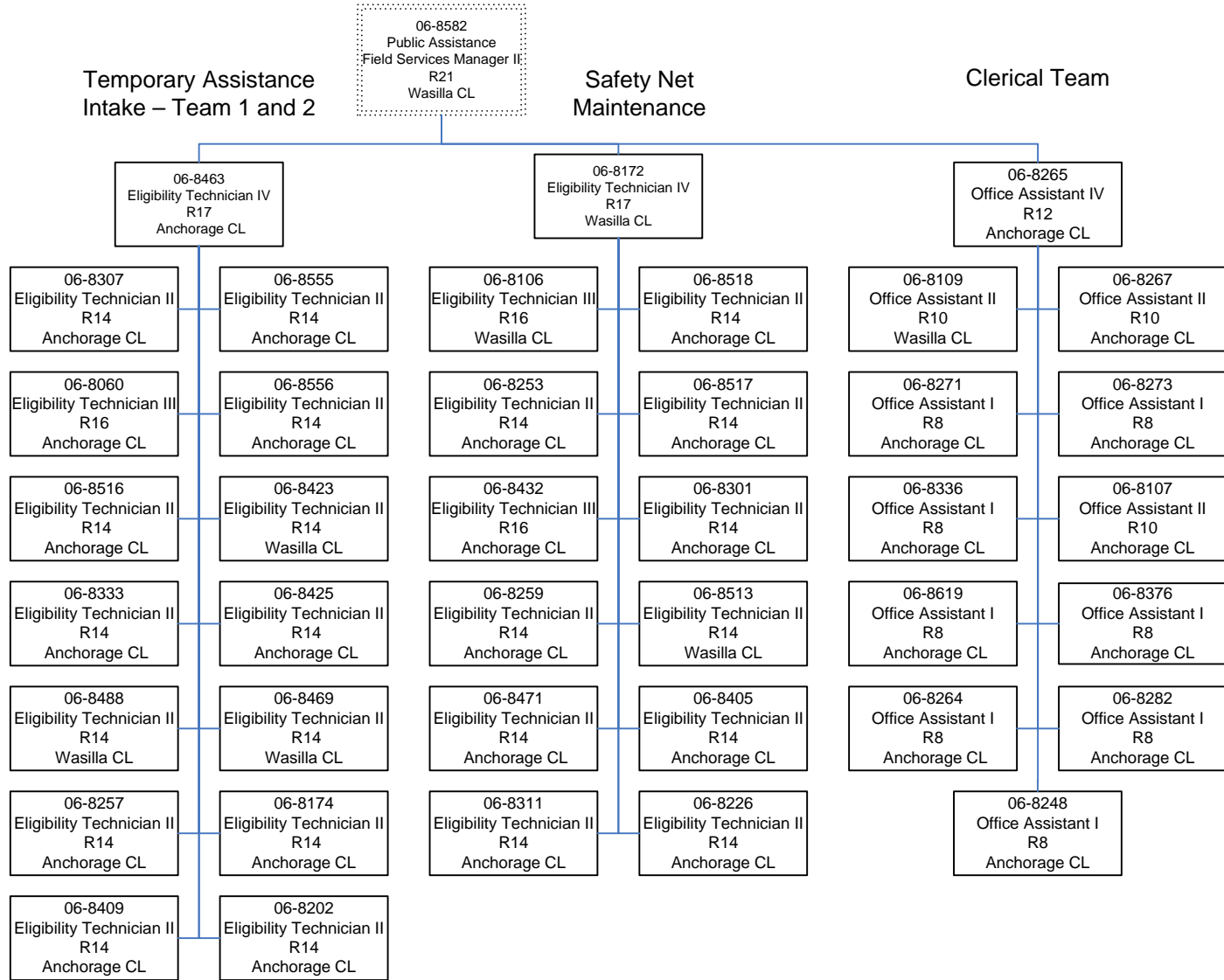


Adult Public Assistance – Team 1



Out-stationed
 At Gateway
 Learning Center

DEPARTMENT OF HEALTH AND SOCIAL SERVICES
 Division of Public Assistance
 Field Services
 Central Region
 Anchorage/Gambell



DEPARTMENT OF HEALTH AND SOCIAL SERVICES
 Division of Public Assistance
 Field Services
 Central Region
 Mat-Su

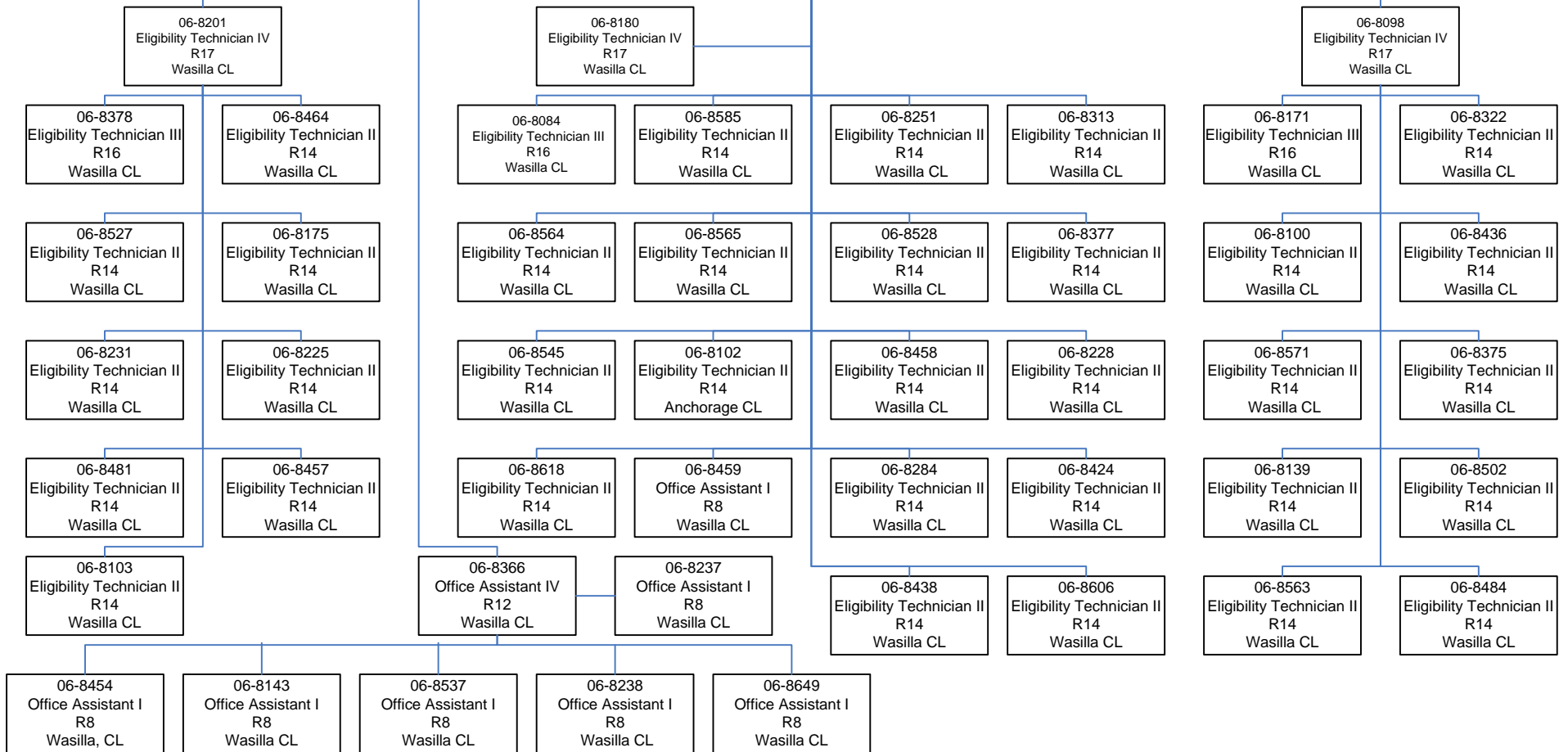
06-8582
 Public Assistance Field
 Services Manager II
 R21
 Wasilla CL

06-8384
 Eligibility Office
 Manager II
 R19
 Wasilla CL

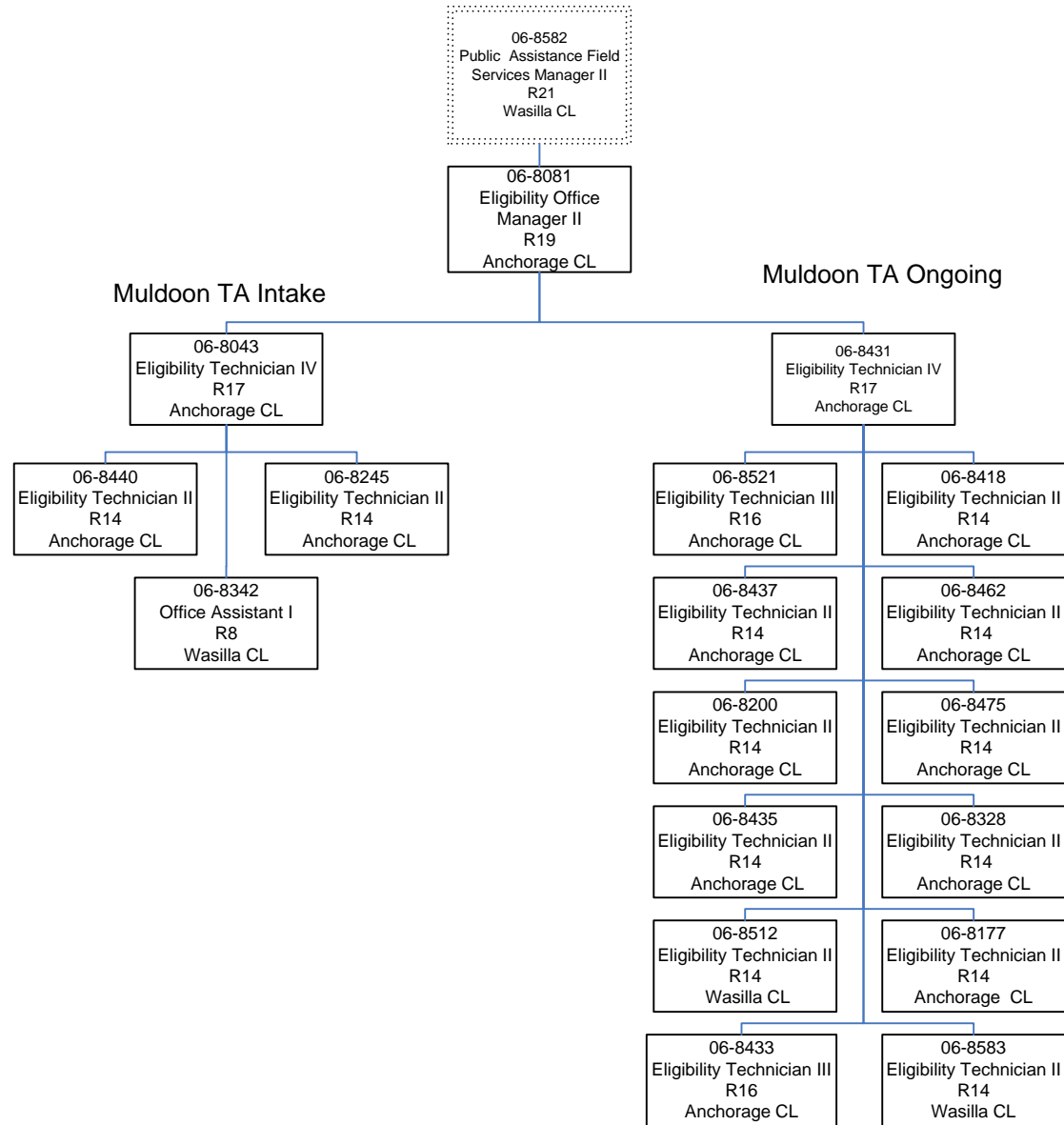
Mat-Su TA Intake

Safety Net Maintenance

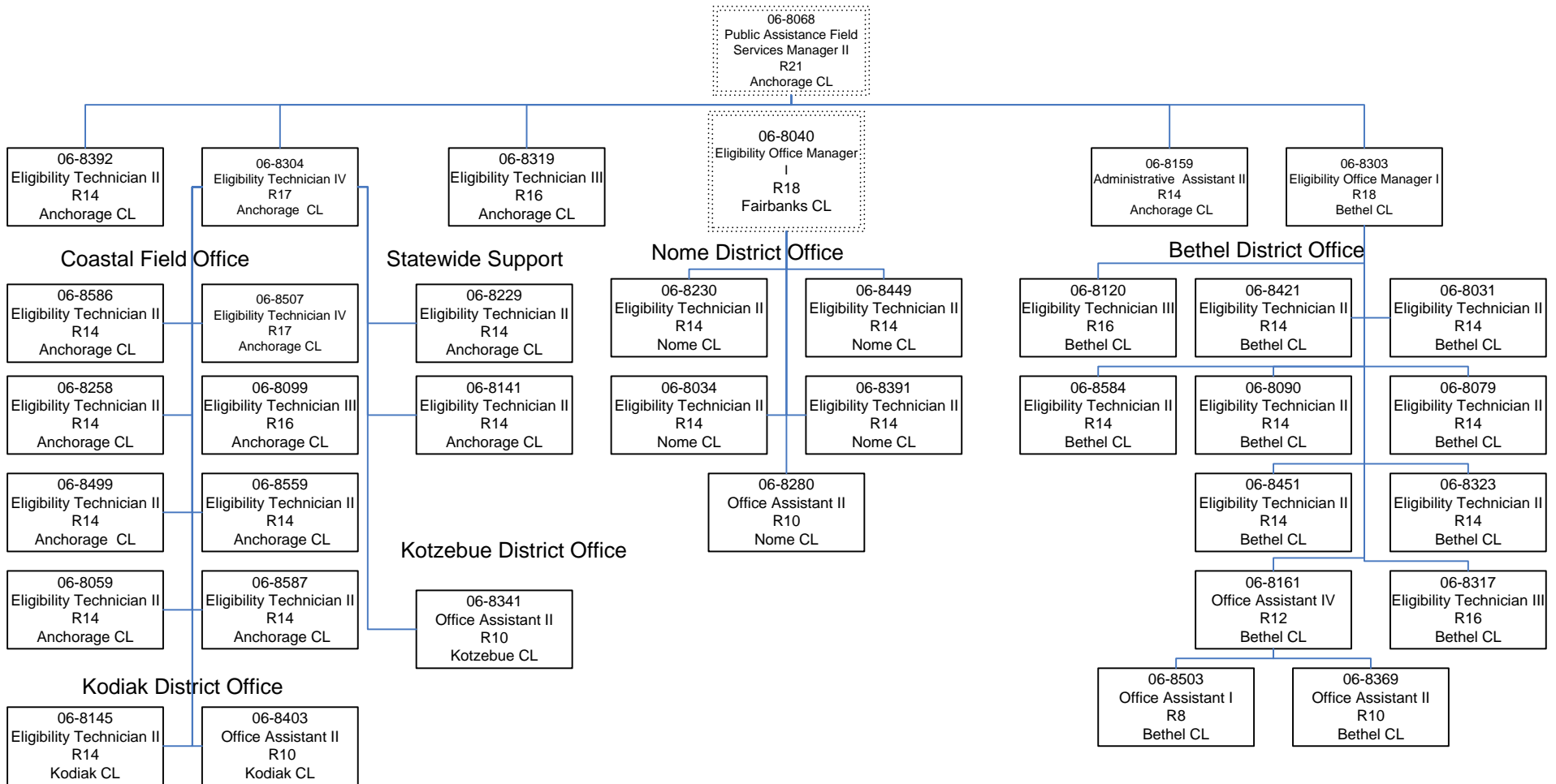
Mat-Su TA Ongoing



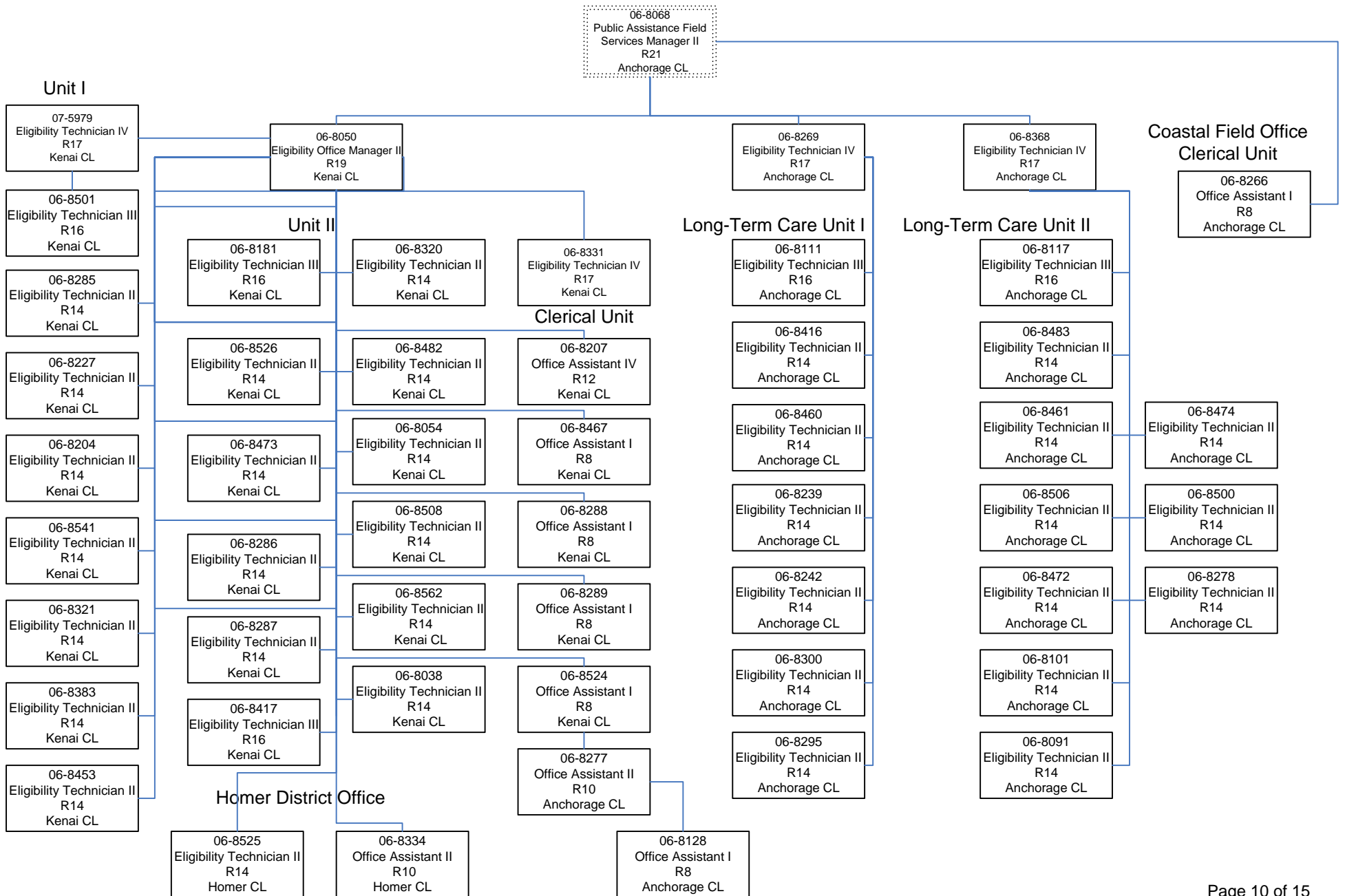
DEPARTMENT OF HEALTH AND SOCIAL SERVICES
 Division of Public Assistance
 Field Services
 Central Region
 Muldoon



DEPARTMENT OF HEALTH AND SOCIAL SERVICES
 Division of Public Assistance
 Field Services
 Coastal Region



DEPARTMENT OF HEALTH AND SOCIAL SERVICES
 Division of Public Assistance
 Field Services
 Coastal Region



DEPARTMENT OF HEALTH AND SOCIAL SERVICES
Division of Public Assistance
Field Services
Northern Region

06-8042
 Public Assistance Field
 Services Manager II
 R21
 Fairbanks CL

Maintenance Team 1

Regional Team

Intake Team

Maintenance Team 2

Clerical Team

06-8315
 Eligibility Technician IV
 R17
 Fairbanks CL

06-8089
 Eligibility Technician II
 R14
 Fairbanks CL

06-8150
 Eligibility Technician II
 R14
 Fairbanks CL

06-8179
 Eligibility Technician III
 R16
 Fairbanks CL

06-8162
 Eligibility Technician II
 R14
 Fairbanks CL

06-8445
 Eligibility Technician II
 R14
 Fairbanks CL

06-8420
 Eligibility Technician II
 R14
 Fairbanks CL

06-8045
 Eligibility Technician II
 R14
 Fairbanks CL

06-8203
 Eligibility Technician II
 R14
 Fairbanks CL

06-8275
 Administrative Assistant II
 R14
 Fairbanks CL

06-8390
 Office Assistant II
 R10
 Fairbanks CL

06-8118
 Eligibility Technician III
 R16
 Fairbanks CL

06-8316
 Eligibility Technician III
 R16
 Fairbanks CL

06-8205
 Eligibility Technician II
 R14
 Fairbanks CL

06-8051
 Eligibility Technician II
 R14
 Fairbanks CL

06-8040
 Eligibility Office Manager I
 R18
 Fairbanks CL

06-8182
 Eligibility Technician II
 R14
 Fairbanks CL

06-8479
 Eligibility Technician II
 R14
 Fairbanks CL

06-8235
 Eligibility Technician III
 R16
 Fairbanks CL

06-8566
 Eligibility Technician III
 R16
 Fairbanks CL

06-8478
 Eligibility Technician II
 R14
 Fairbanks CL

06-8261
 Eligibility Technician II
 R14
 Fairbanks CL

06-8560
 Eligibility Technician II
 R14
 Fairbanks CL

06-8558
 Eligibility Technician II
 R14
 Fairbanks CL

06-8078
 Eligibility Technician II
 R14
 Fairbanks CL

06-8036
 Eligibility Technician II
 R14
 Fairbanks CL

06-8260
 Eligibility Technician II
 R14
 Fairbanks CL

06-8540
 Eligibility Technician II
 R14
 Fairbanks CL

06-8444
 Eligibility Technician II
 R14
 Fairbanks CL

06-8055
 Eligibility Technician II
 R14
 Fairbanks CL

06-8441
 Eligibility Technician II
 R14
 Fairbanks CL

06-8442
 Eligibility Technician IV
 R17
 Fairbanks CL

06-8057
 Eligibility Technician III
 R16
 Fairbanks CL

06-8446
 Eligibility Technician II
 R14
 Fairbanks CL

06-8547
 Eligibility Technician II
 R14
 Fairbanks CL

06-8236
 Eligibility Technician II
 R14
 Fairbanks CL

06-8443
 Eligibility Technician II
 R14
 Fairbanks CL

06-8318
 Eligibility Technician II
 R14
 Fairbanks CL

06-8480
 Eligibility Technician II
 R14
 Fairbanks CL

06-8408
 Eligibility Technician II
 R14
 Fairbanks CL

06-8434
 Eligibility Technician II
 R14
 Fairbanks CL

06-8208
 Office Assistant IV
 R12
 Fairbanks CL

06-8281
 Office Assistant I
 R8
 Fairbanks CL

06-8335
 Office Assistant I
 R8
 Fairbanks CL

06-8025
 Office Assistant I
 R8
 Fairbanks CL

06-8593
 Office Assistant I
 R8
 Fairbanks CL

06-8276
 Office Assistant II
 R10
 Fairbanks CL

06-8067
 Office Assistant I
 R8
 Fairbanks CL

06-8279
 Office Assistant I
 R8
 Fairbanks CL

DEPARTMENT OF HEALTH AND SOCIAL SERVICES
 Division of Public Assistance
 Field Services
 Southeast Region

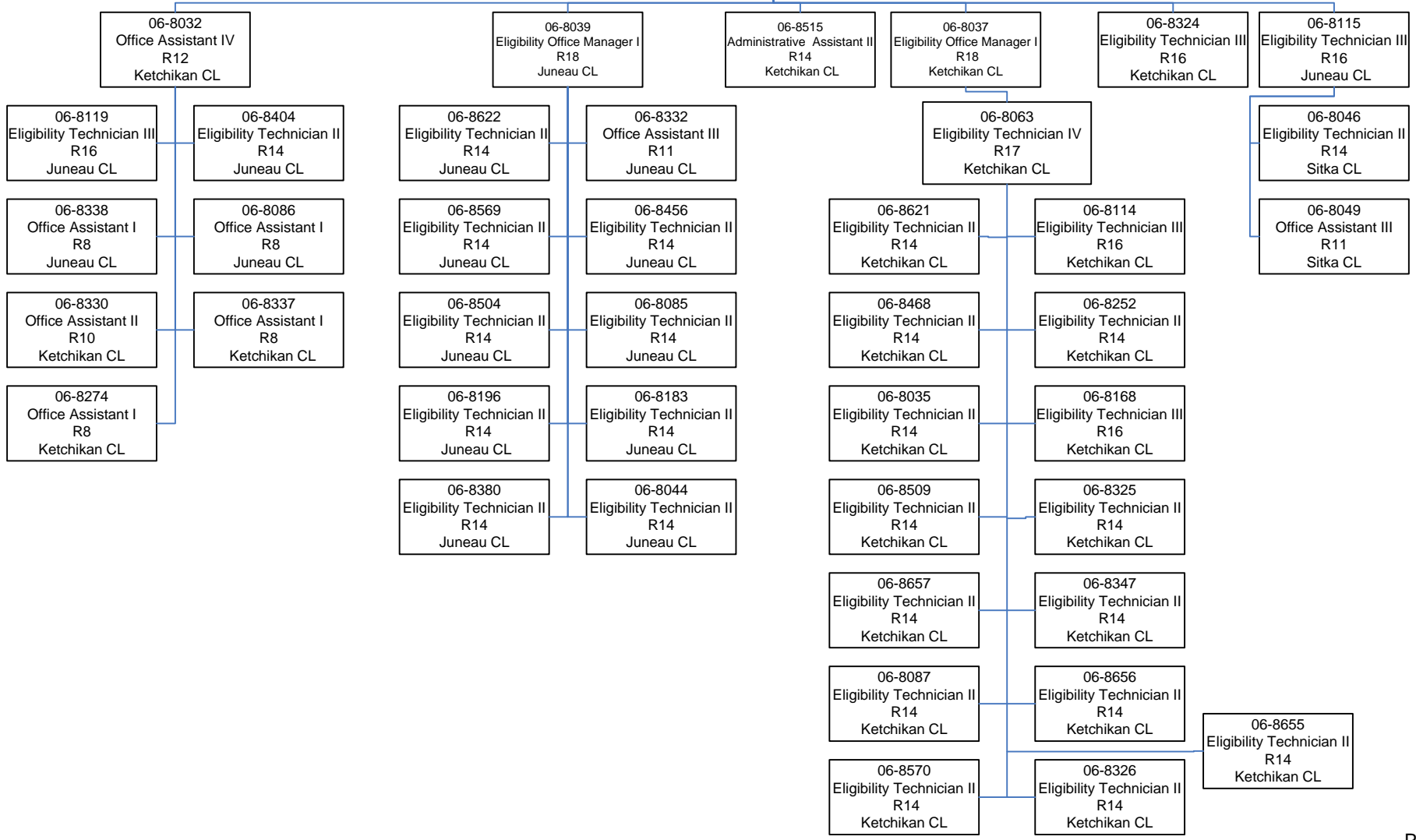
06-8185
 Public Assistance
 Field Services
 Manager II
 R21
 Ketchikan CL

Juneau/Ketchikan Clerical Unit

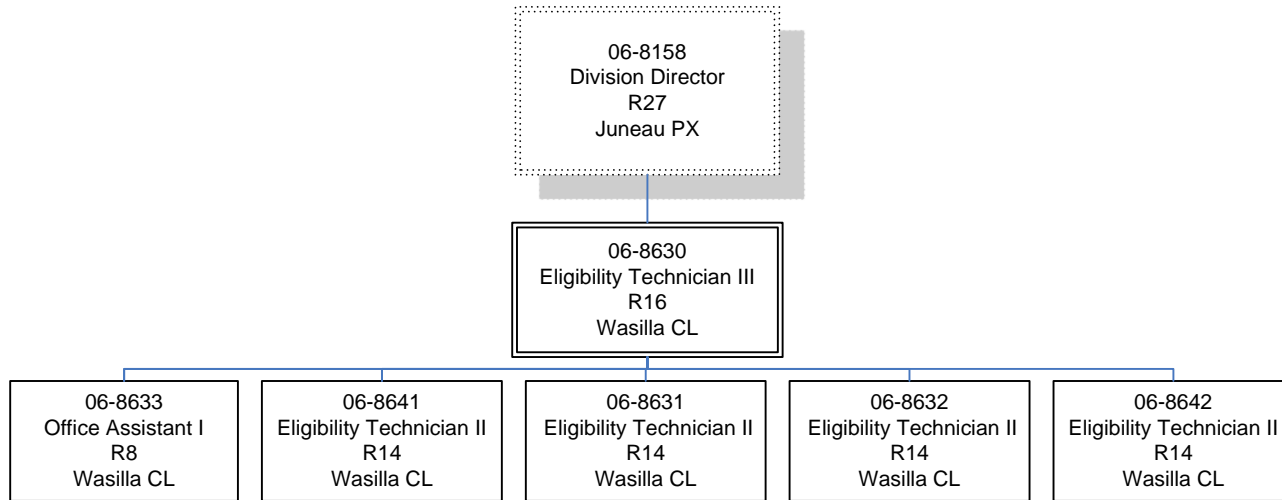
SE Public Assistance Unit

Ketchikan District Office

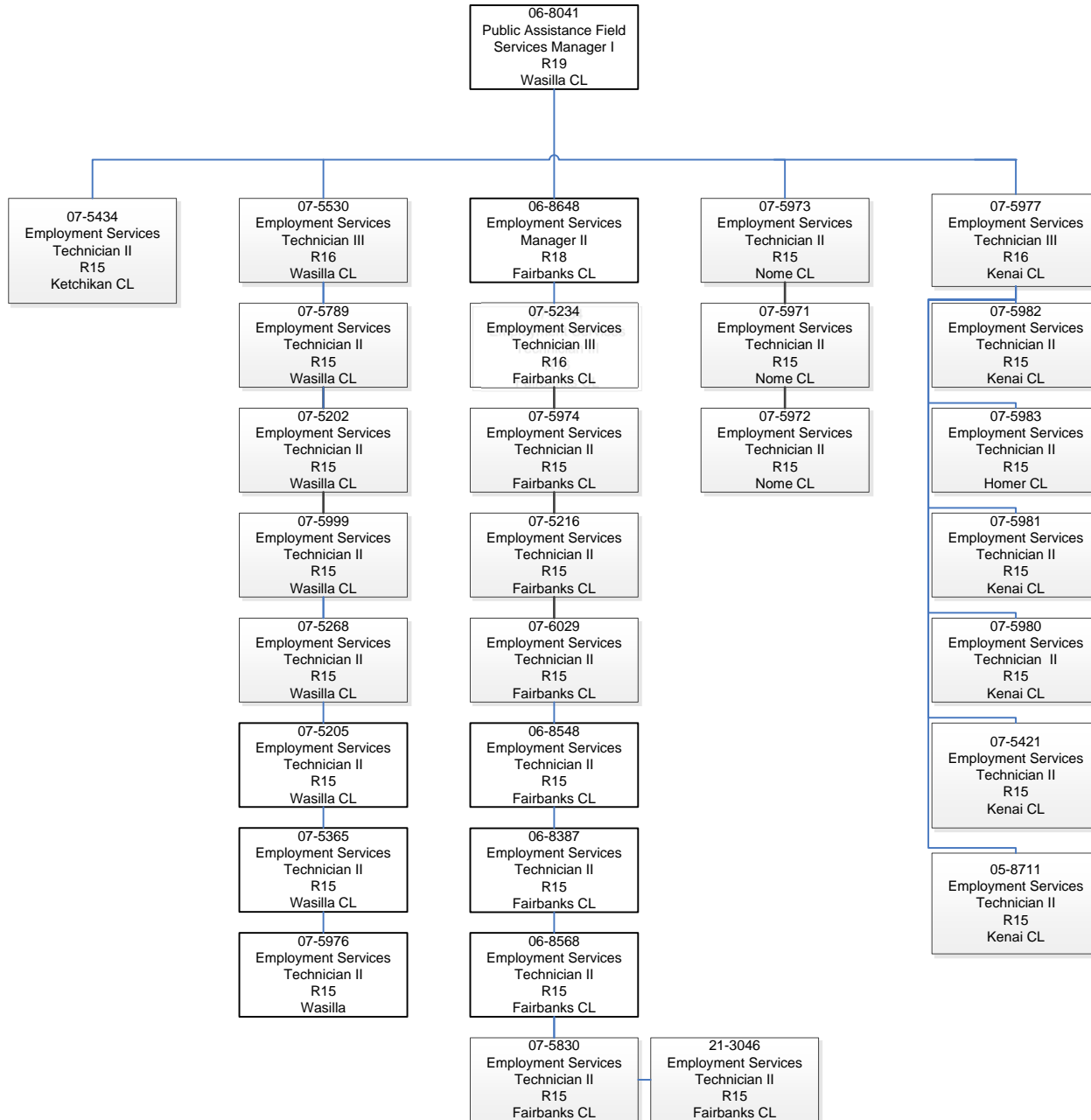
Sitka District Office



DEPARTMENT OF HEALTH AND SOCIAL SERVICES
Division of Public Assistance
Senior Benefits Program/Mat-Su Maintenance



DEPARTMENT OF HEALTH AND
SOCIAL SERVICES
Division of Public Assistance
Field Services/Work Services

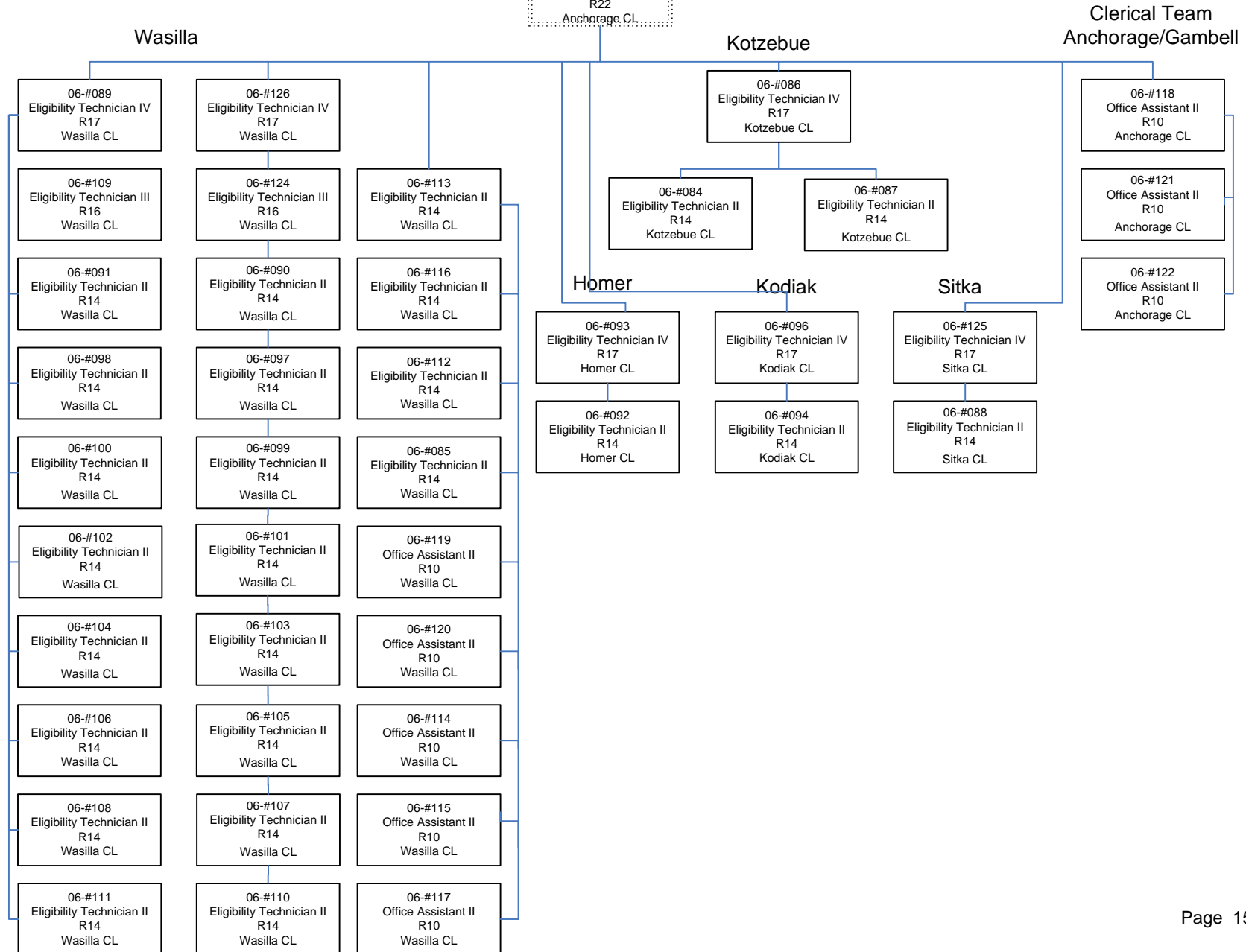


DEPARTMENT OF HEALTH AND SOCIAL SERVICES

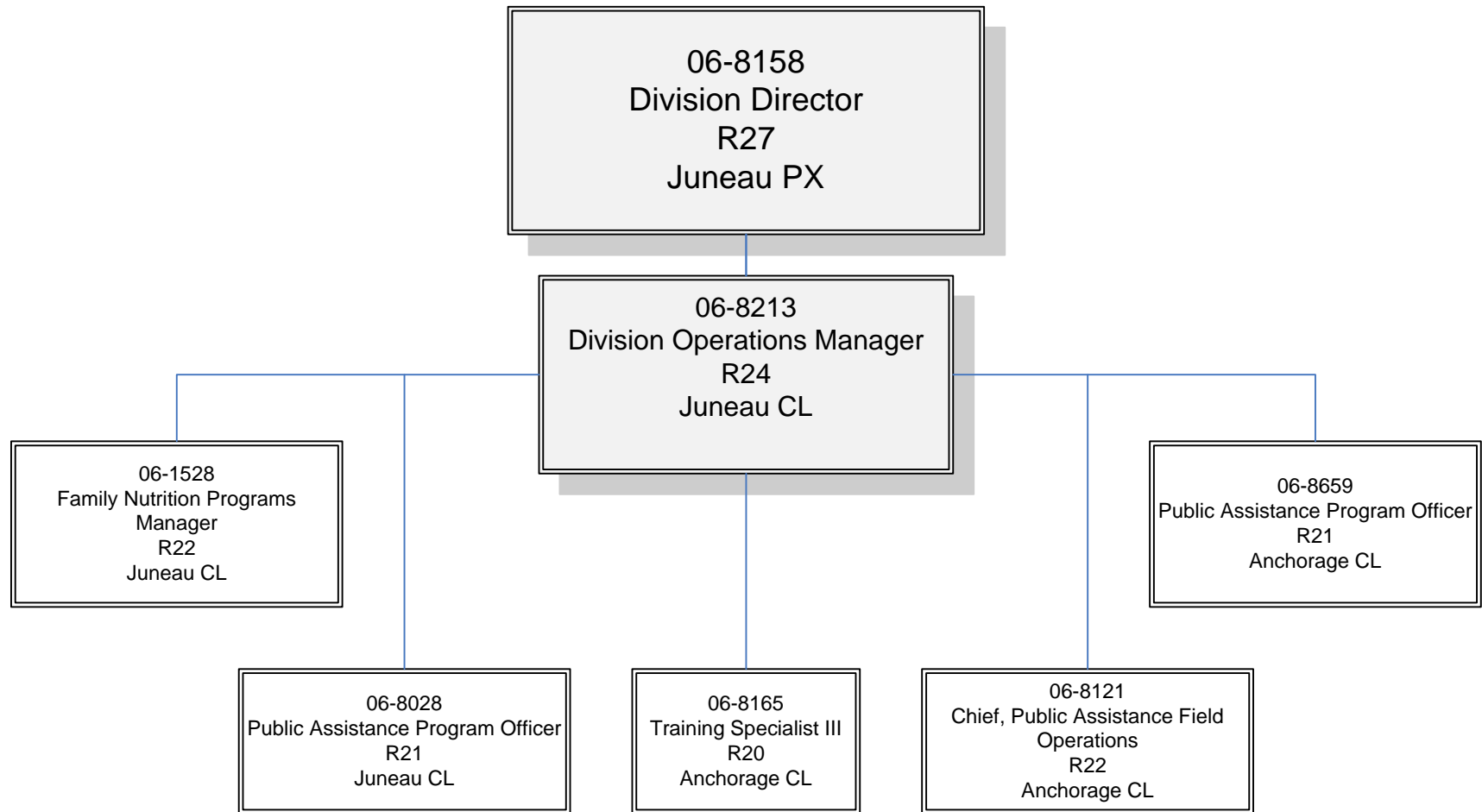
Division of Public Assistance
Field Services Proposed Positions

06-8158
Division Director
R27
Juneau PX

06-8121
Chief, Public Assistance
Field Operations
R22
Anchorage CL



DEPARTMENT OF HEALTH AND SOCIAL SERVICES
Division of Public Assistance
Directors Office



DEPARTMENT OF HEALTH AND SOCIAL SERVICES
Division of Public Assistance
EIS Replacement Project Office

