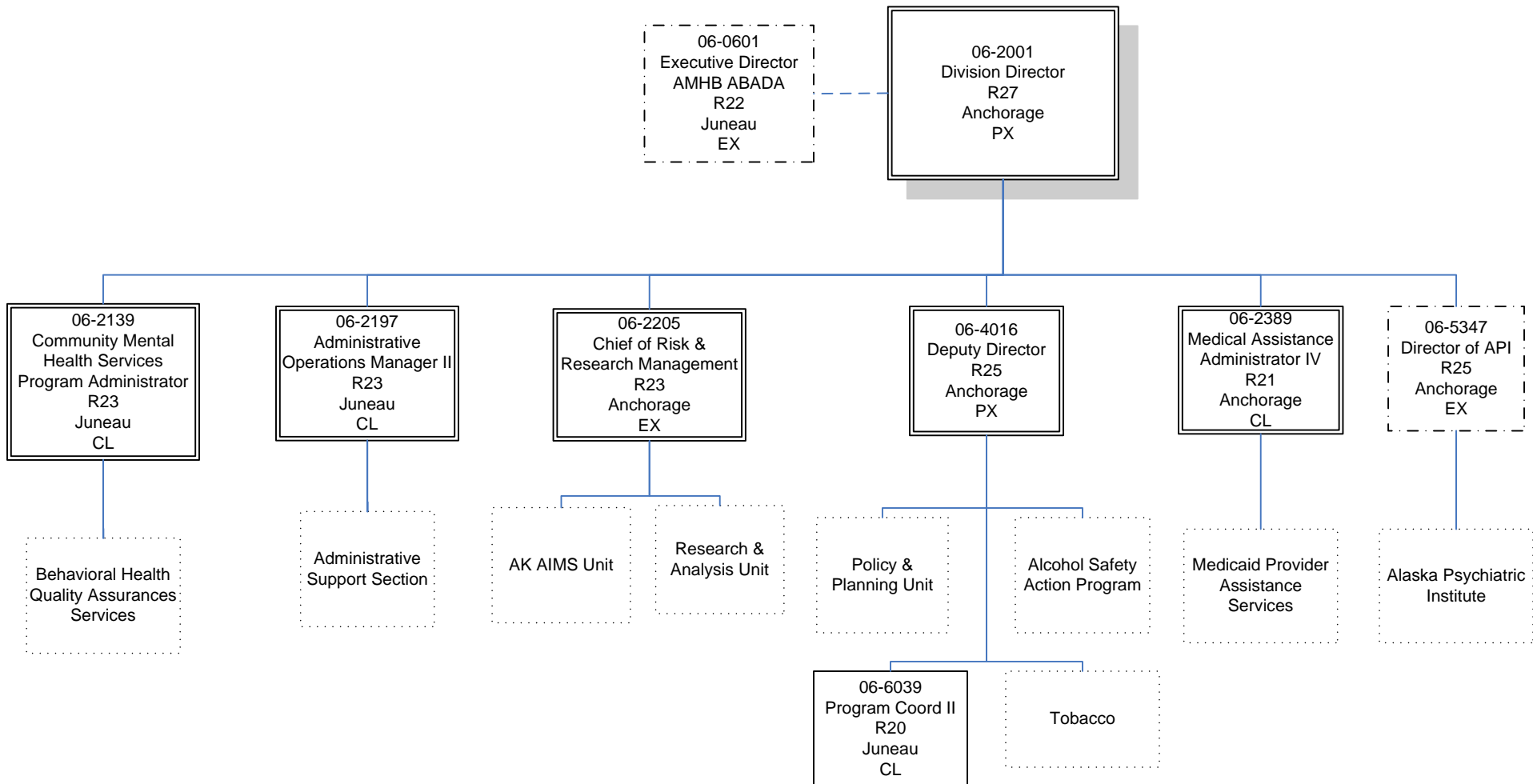
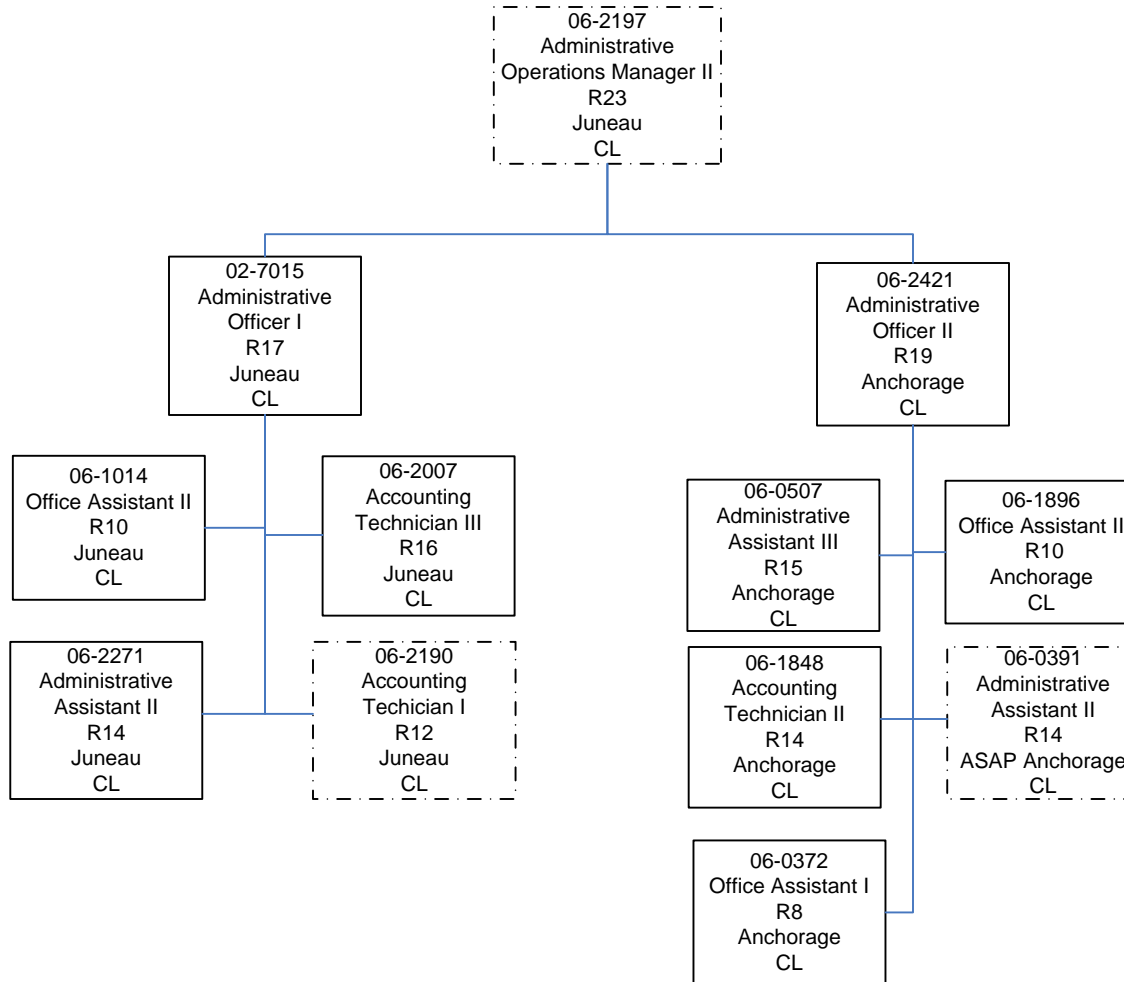


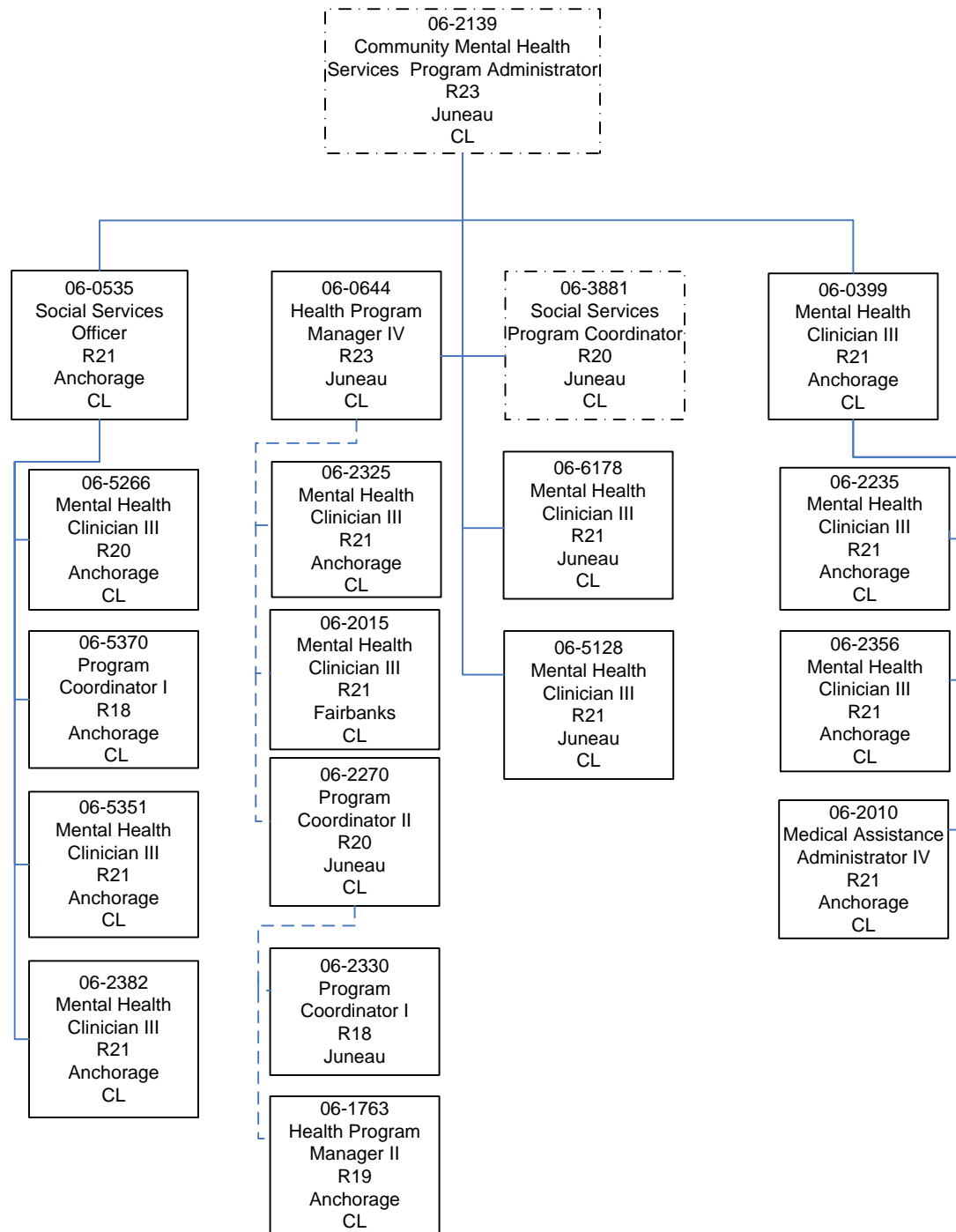
Department of Health and Social Services
 Division of Behavioral Health
 FY2019 Governor's Budget
 Behavioral Health Administration
 Director's Office
 (2665)



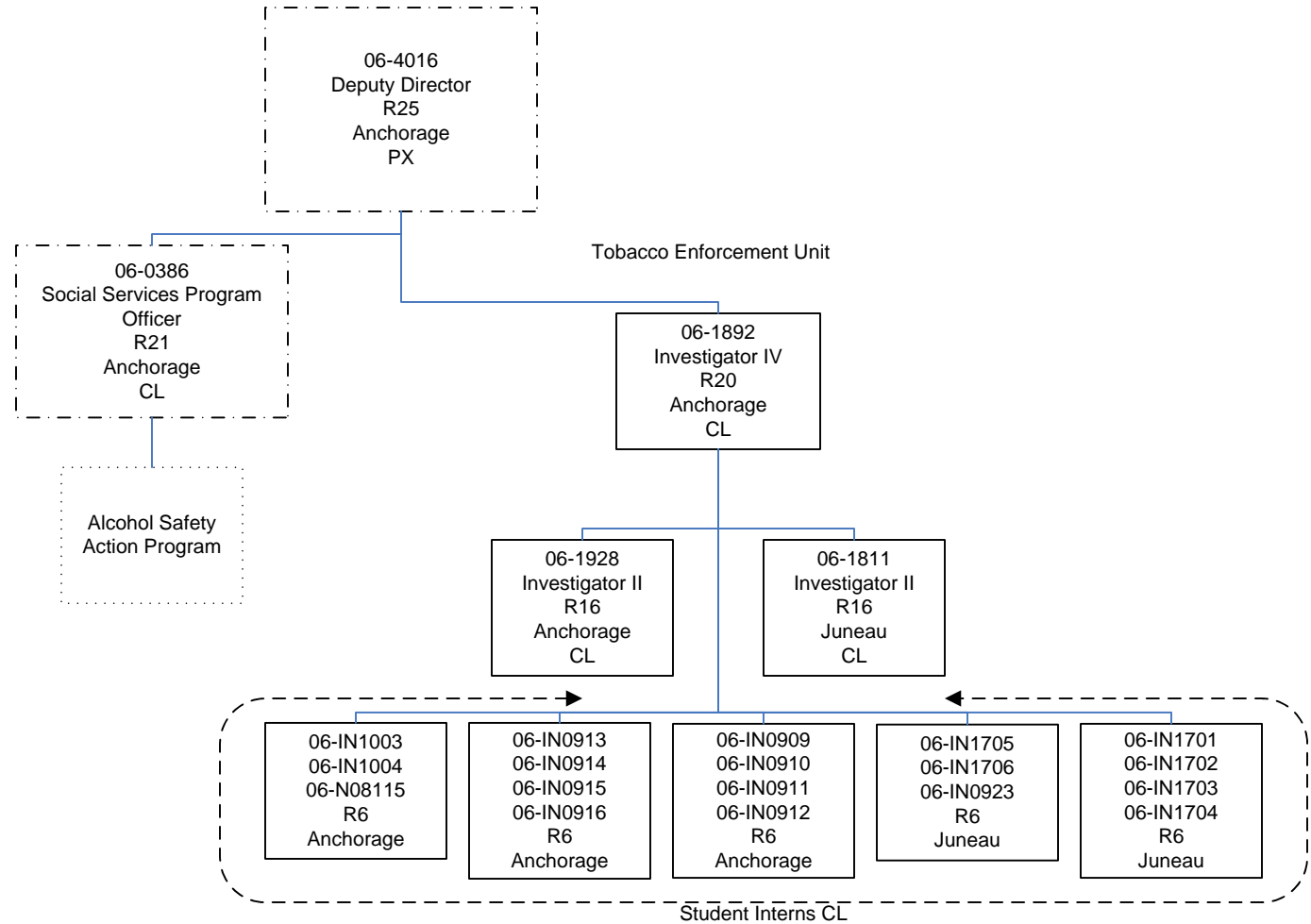
Department of Health and Social Services
Division of Behavioral Health
FY2019 Governor's Budget
Behavioral Health Administration
Administrative Support Section
(2665)



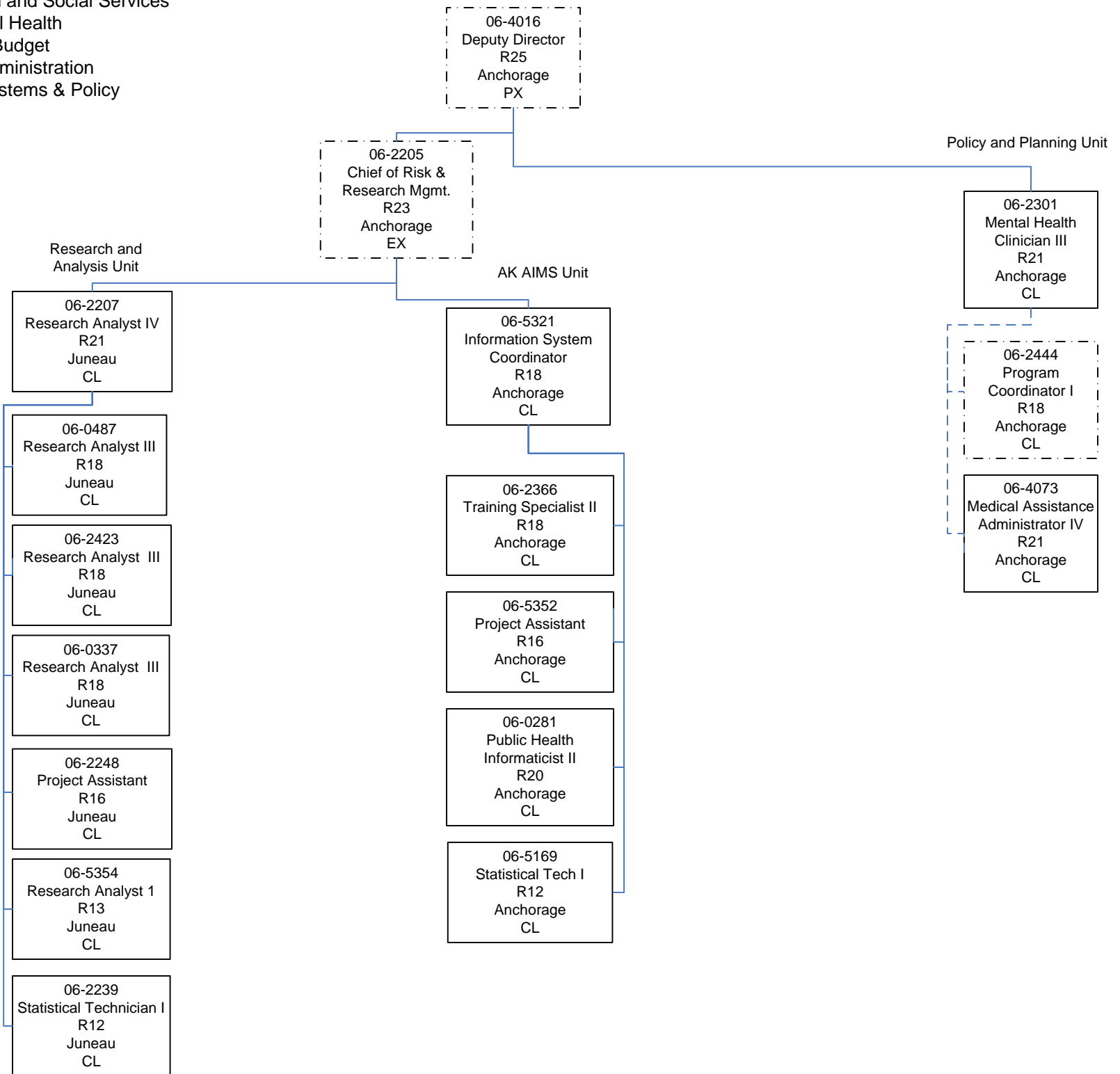
Department of Health and Social Services
 Division of Behavioral Health
 FY2019 Governor's Budget
 Behavioral Health Administration
 Behavioral Health Quality Assurance Services
 (2665)



Department of Health and Social Services
Division of Behavioral Health
FY2019 Governor's Budget
Behavioral Health Administration
Prevention & Early Intervention Section
(2665)



Department of Health and Social Services
Division of Behavioral Health
FY2019 Governor's Budget
Behavioral Health Administration
Behavioral Health Systems & Policy
(2665)



Department of Health and Social Services
Division of Behavioral Health
FY2019 Governor's Budget
Behavioral Health Administration
Medicaid Provider Assistance Services
(2665)

