

STATE OF ALASKA
DEPARTMENT OF ADMINISTRATION
DIVISION OF PERSONNEL and
LABOR RELATIONS
Director's Office

02-2040
Labor Relations Manager – LR
R24 - Juneau - EX

02-2001
Division Director
R27 – Juneau - EX

02-2108
HR Consultant VI– DOP
R24 - Juneau - CL

21-2003
HR Consultant II
R18 - Juneau - CL

25-0046
HR Consultant V
R22 – Juneau - CL

Employee Planning &
Information Center

Admin Support

Training &
Development

EEO

Classification

18-7654
HR Consultant IV
R20 – Juneau - CL

12-4205
Publication Spec III
R19 – Juneau - CL

04-1018
Admin Officer I
R17 – Juneau – CL

07-1601
Training Specialist III
R20 – Anchorage - CL

20-1024
HR Consultant V
R22 – Anchorage - CL

02-2100
HR Consultant V
R22 – Juneau - CL

07-1219
HR Consultant I
R16 – Juneau – CL

11-0222
HR Consultant I
R16 – Juneau - CL

02-2015
Admin Assistant II
R14 – Juneau – CL

02-2122
Training Spec II
R18 – Anchorage – CL

02-1029
HR Consultant II
R18 – Anchorage - CL

18-7053
HR Consultant IV
R20 – Juneau - CL

06-0453
HR Tech I
R12 – Juneau - CL

02-2118
Office Asst I
R8 – Juneau - CL

02-2052
HR Tech I
R12 – Anchorage - CL

02-6313
HR Consultant II
R18 – Anchorage - CL

02-1010
HR Tech I
R12 – Juneau - CL

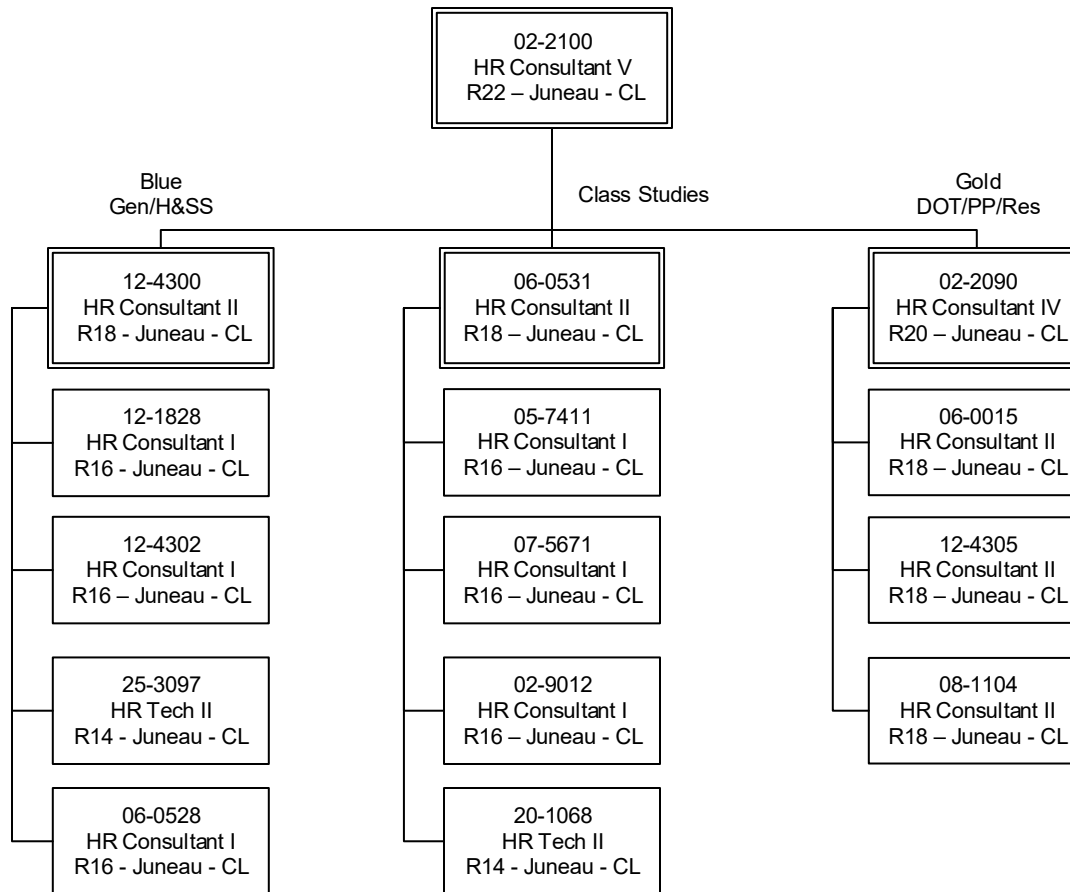
02-2013
Office Asst I
R8 – Juneau – CL

05-2144
State ADA Coordinator
R18 – Juneau - CL

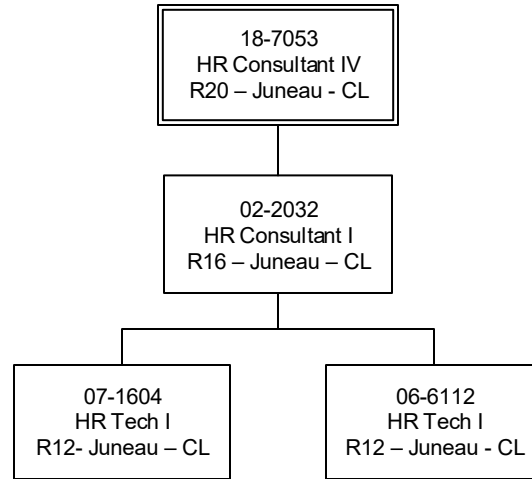
03-0179
HR Consultant I
R16 – Anchorage - CL

POSITION COUNT	
DOP EX	1
LR EX	1
DOP CL	121
LR CL	6
TOTAL	129

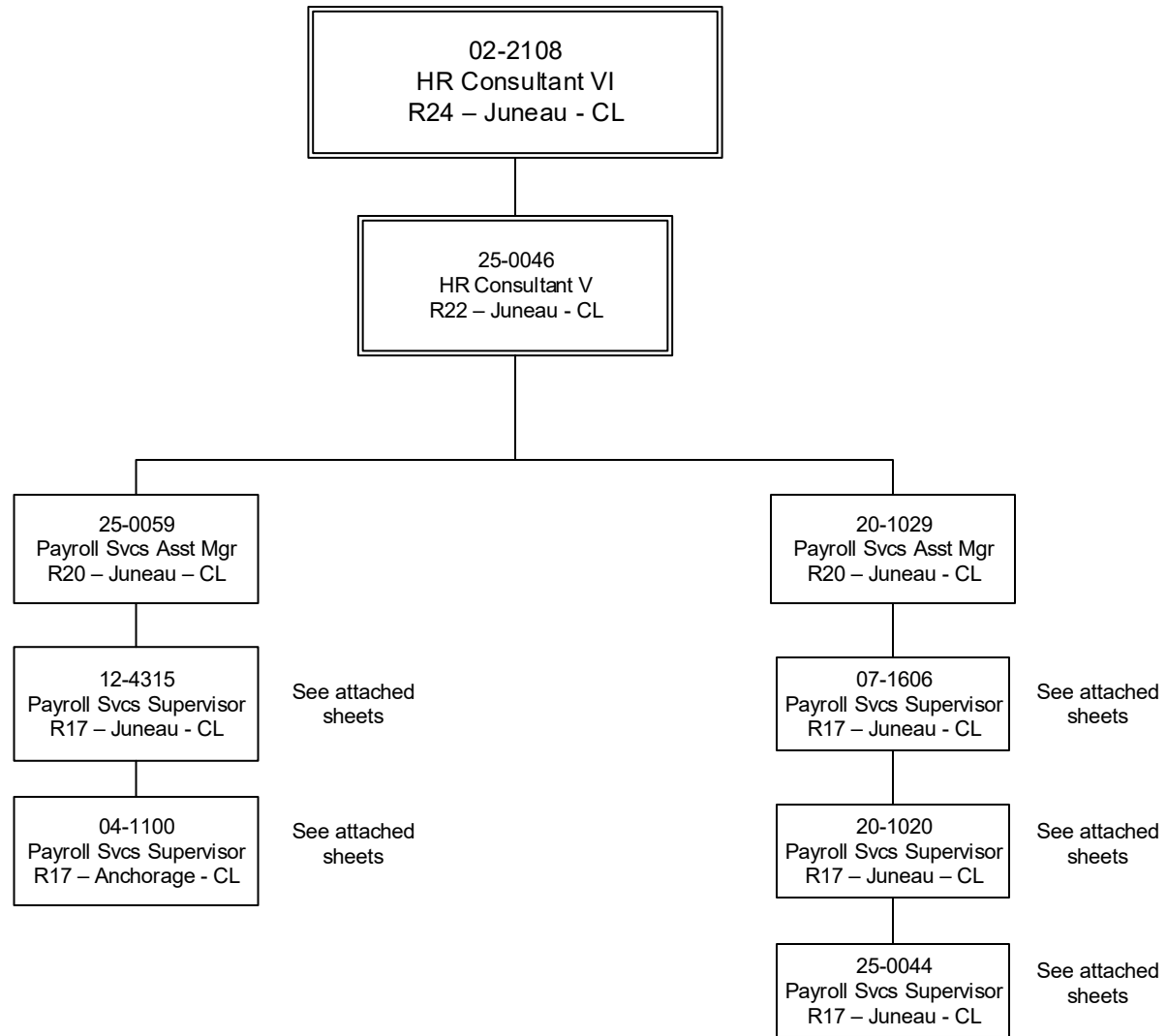
Classification



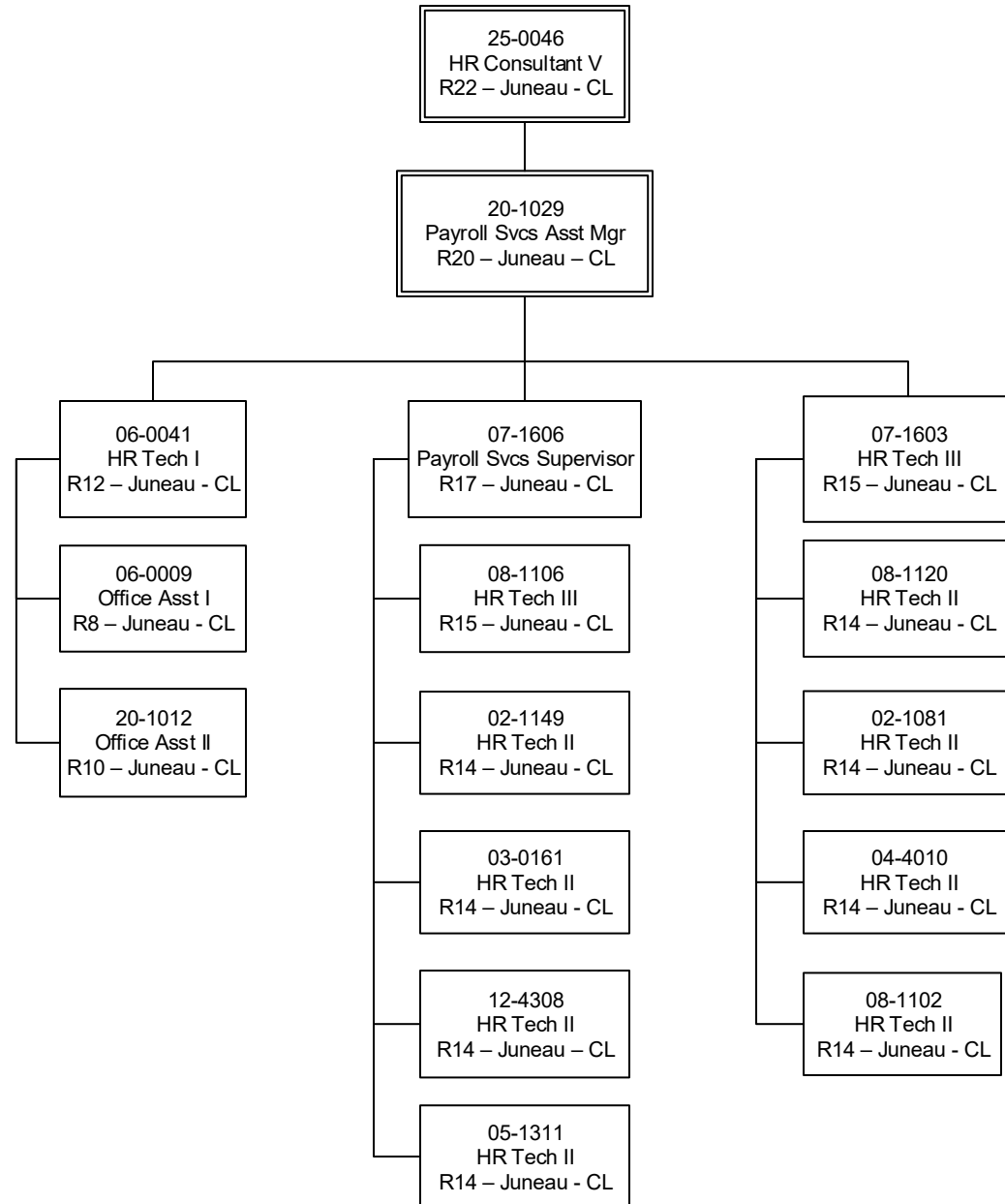
Recruitment Services



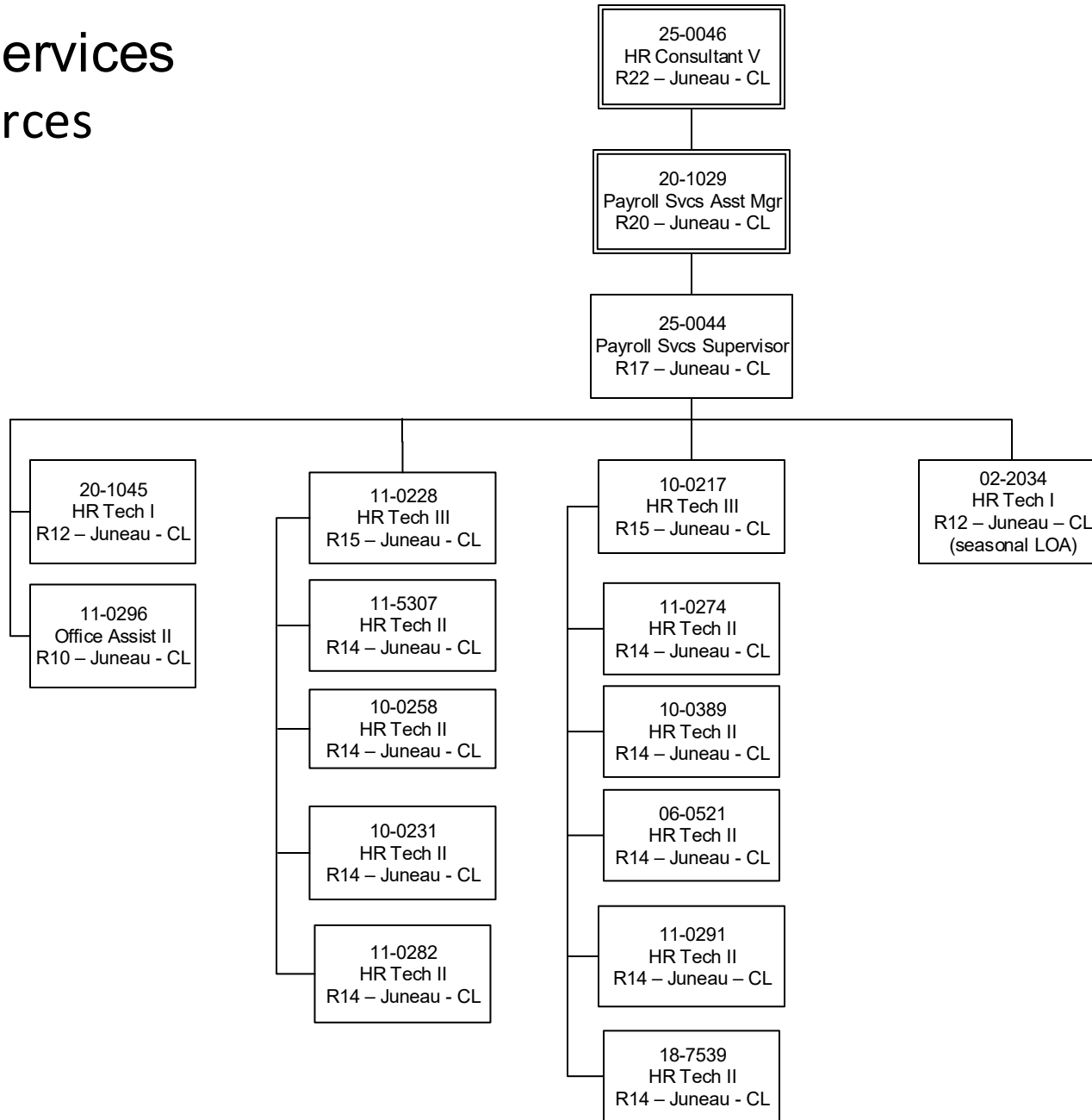
Payroll Services Management



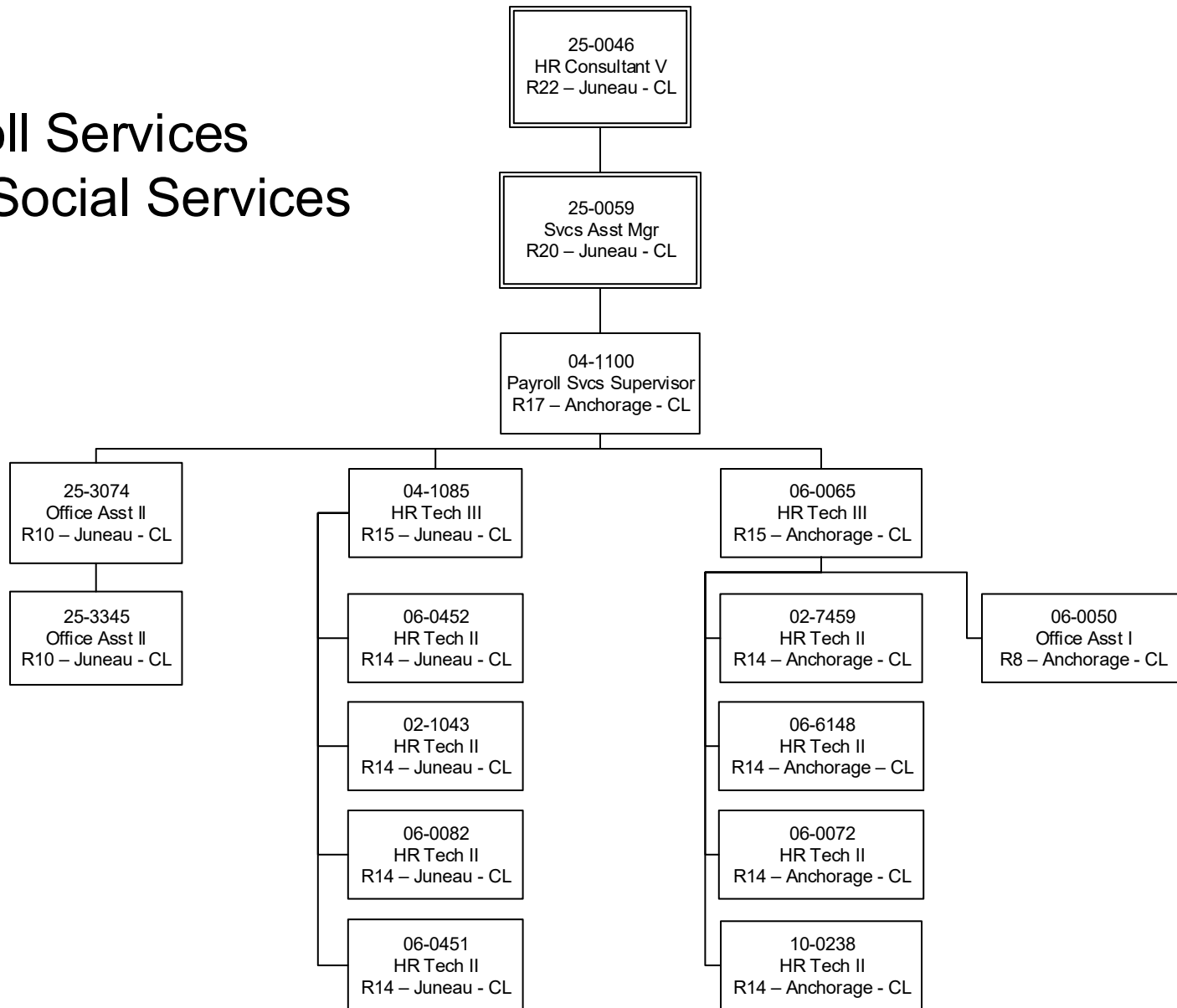
Payroll Services General Agencies



Payroll Services Resources

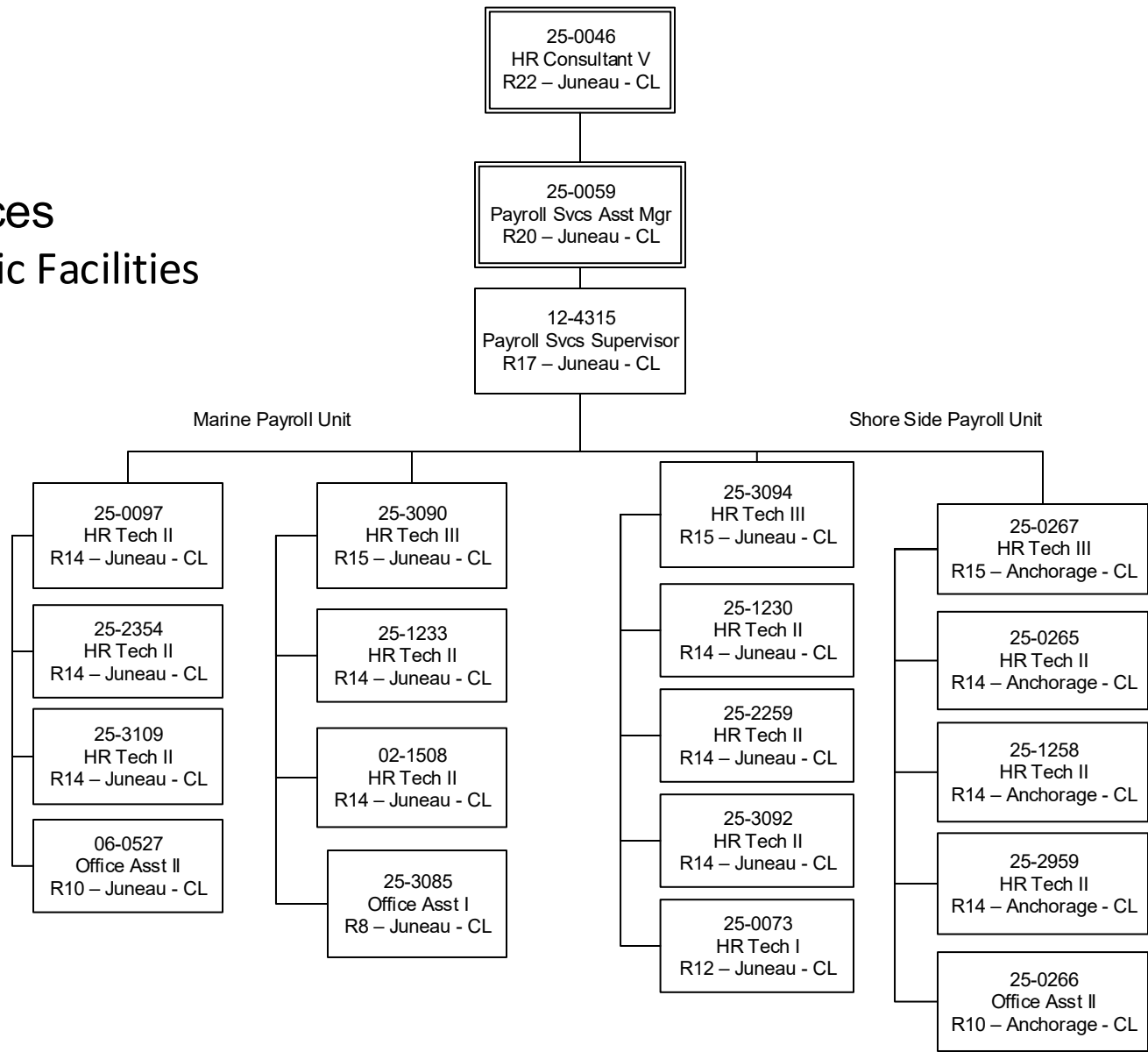


Payroll Services Health & Social Services

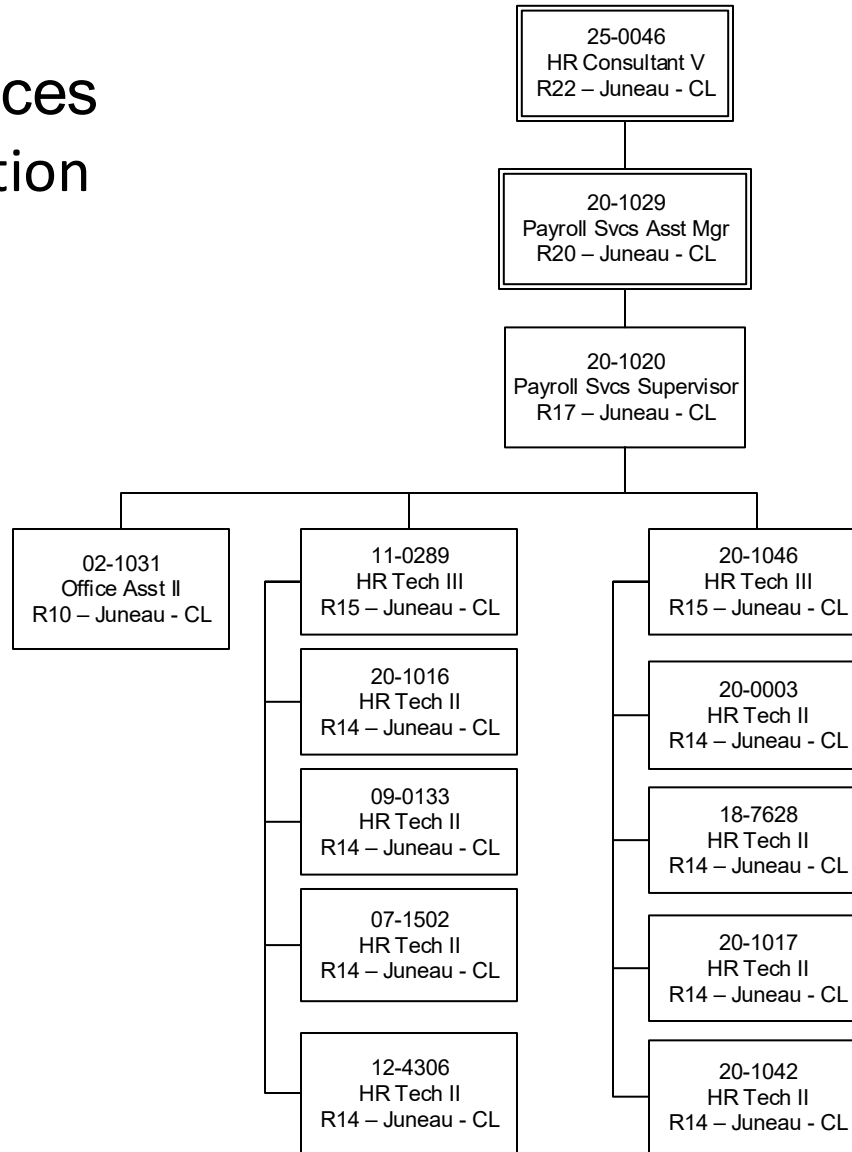


Payroll Services

Transportation & Public Facilities



Payroll Services Public Protection



Payroll Services Manager's Office

