

## Component Detail (1077)

### Department of Corrections

**Component:** Physical Health Care (2952)

Non-Formula Component

**RDU:** Health and Rehabilitation Services (638)

IRIS AP Type: JPHC

	FY2018 Actuals (15158)	FY2019 Conference Committee (14954)	FY2019 Authorized (14962)	FY2019 Management Plan (14994)	FY2020 Governor (15610)	FY2020 Governor Amended (15636)	FY2020 Governor vs FY2020 Governor Amended	
1000 Personal Services	20,104.2	20,161.8	20,161.8	20,161.8	20,659.8	20,161.8	-498.0	-2.4%
2000 Travel	214.1	50.3	50.3	50.3	50.3	50.3	0.0	0.0%
3000 Services	20,043.3	17,192.4	17,192.4	17,192.4	17,192.4	17,192.4	0.0	0.0%
4000 Commodities	3,407.9	3,395.8	3,395.8	3,395.8	3,395.8	3,395.8	0.0	0.0%
5000 Capital Outlay	0.0	0.0	0.0	0.0	0.0	0.0	0.0	0.0%
7000 Grants, Benefits	0.0	0.0	0.0	0.0	0.0	0.0	0.0	0.0%
8000 Miscellaneous	0.0	0.0	0.0	0.0	0.0	0.0	0.0	0.0%
<b>Totals</b>	<b>43,769.5</b>	<b>40,800.3</b>	<b>40,800.3</b>	<b>40,800.3</b>	<b>41,298.3</b>	<b>40,800.3</b>	<b>-498.0</b>	<b>-1.2%</b>
<b><u>Funding Sources:</u></b>								
1004 Gen Fund (UGF)	32,097.2	29,221.9	29,652.0	29,652.0	23,178.4	22,923.1	-255.3	-1.1%
1005 GF/Prgm (DGF)	81.3	85.0	85.0	85.0	85.0	85.0	0.0	0.0%
1171 PFD Crim (Other)	11,591.0	11,493.4	11,063.3	11,063.3	18,034.9	17,792.2	-242.7	-1.3%
<b><u>Funding Totals:</u></b>								
<b>Unrestricted General (UGF)</b>	<b>32,097.2</b>	<b>29,221.9</b>	<b>29,652.0</b>	<b>29,652.0</b>	<b>23,178.4</b>	<b>22,923.1</b>	<b>-255.3</b>	<b>-1.1%</b>
<b>Designated General (DGF)</b>	<b>81.3</b>	<b>85.0</b>	<b>85.0</b>	<b>85.0</b>	<b>85.0</b>	<b>85.0</b>	<b>0.0</b>	<b>0.0%</b>
<b>Other</b>	<b>11,591.0</b>	<b>11,493.4</b>	<b>11,063.3</b>	<b>11,063.3</b>	<b>18,034.9</b>	<b>17,792.2</b>	<b>-242.7</b>	<b>-1.3%</b>
<b>Federal</b>	<b>0.0</b>	<b>0.0</b>	<b>0.0</b>	<b>0.0</b>	<b>0.0</b>	<b>0.0</b>	<b>0.0</b>	<b>0.0%</b>
<b><u>Positions:</u></b>								
Permanent Full Time	143	143	143	143	143	143	0	0.0%
Permanent Part Time	0	0	0	0	0	0	0	0.0%
Non Permanent	0	0	0	0	0	0	0	0.0%

**Change Record Detail - Multiple Scenarios with Descriptions (294)**  
**Department of Corrections**

**Component:** Physical Health Care (2952)  
**RDU:** Health and Rehabilitation Services (638)

Scenario/Change Record Title	Trans Type	Totals	Personal Services	Travel	Services	Commodities	Capital Outlay	Grants, Benefits	Miscellaneous	PFT	Positions PPT	NP
***** Changes From FY2019 Conference Committee To FY2019 Authorized *****												
<b>FY2019 Conference Committee</b>												
	ConfCom	40,800.3	20,161.8	50.3	17,192.4	3,395.8	0.0	0.0	0.0	143	0	0
1004 Gen Fund		29,221.9										
1005 GF/Prgm		85.0										
1171 PFD Crim		11,493.4										
<b>Crimes; Restitution; Dividend Fund Ch21 SLA2018 (HB216) (Sec2 Ch17 SSLA2018 P43 L4 (HB286))</b>												
	FisNot	0.0	0.0	0.0	0.0	0.0	0.0	0.0	0.0	0	0	0
1004 Gen Fund		430.1										
1171 PFD Crim		-430.1										
Fund source change associated with the new priority order established under passed legislation Crimes; Restitution; Dividend Fund Ch21 SLA2018 (HB216) (Sec2 Ch17 SSLA2018 P43 L4 (HB286)).												
<b>Subtotal</b>		<b>40,800.3</b>	<b>20,161.8</b>	<b>50.3</b>	<b>17,192.4</b>	<b>3,395.8</b>	<b>0.0</b>	<b>0.0</b>	<b>0.0</b>	<b>143</b>	<b>0</b>	<b>0</b>
***** Changes From FY2019 Management Plan To FY2020 Governor Amended *****												
<b>Estimated Increase in Permanent Fund Dividend Criminal Funds</b>												
	FndChg	0.0	0.0	0.0	0.0	0.0	0.0	0.0	0.0	0	0	0
1004 Gen Fund		-6,728.9										
1171 PFD Crim		6,728.9										
Permanent Fund Dividend (PFD) Criminal Funds are available for appropriation based on the number of convicted felons and third time misdemeanants who are ineligible to receive a PFD. Due to an increase in both the number of people deemed ineligible and the amount of the PFD, a fund source change will replace a portion of the General Fund authorization with Restorative Justice Account authorization.												
Estimates are based on projections provided by the Permanent Fund Division.												
<b>Totals</b>		<b>40,800.3</b>	<b>20,161.8</b>	<b>50.3</b>	<b>17,192.4</b>	<b>3,395.8</b>	<b>0.0</b>	<b>0.0</b>	<b>0.0</b>	<b>143</b>	<b>0</b>	<b>0</b>

## Personal Services Expenditure Detail (1445)

### Department of Corrections

Scenario: FY2020 Governor Amended (15636)  
 Component: Physical Health Care (2952)  
 RDU: Health and Rehabilitation Services (638)

Status PCN	Tracking ID	Job Class Title	Time Status	Retire Code	Barg Unit	Location	Salary Sched	Range / Steps	Comp Months	Split / Count	Annual Salaries	COLA	Premium Pay	Annual Benefits	Total Costs	UGF Amount
20-0015	15471	Licensed Prac Nurse	FT	A	GP	Anchorage	100	17 G	12.0		66,192	2,718	0	42,909	111,819	55,910
20-0017	15472	Nurse II (Corrections)	FT	A	GP	Fairbanks	103	20 G / J	12.0		87,420	3,590	0	50,740	141,750	70,875
20-0018	15473	Nurse III (Corrections)	FT	A	SS	Fairbanks	503	21 L	12.0		106,932	0	0	58,277	165,209	82,605
20-0019	15474	Nurse II (Corrections)	FT	A	GP	Fairbanks	103	20 F / G	12.0		83,962	3,448	0	49,464	136,874	68,437
20-0020	15475	Nurse II (Corrections)	FT	A	GP	Eagle River	100	20 G	12.0		84,300	3,462	0	49,589	137,351	68,676
20-0021	15476	Nurse II (Corrections)	FT	A	GP	Eagle River	100	20 J / K	12.0		89,160	3,662	0	51,381	144,203	72,102
20-0022	15477	Nurse II (Corrections)	FT	A	GP	Mackenzie Point	200	20 D	12.0		72,768	2,988	0	45,334	121,090	60,545
20-0023	15478	Nurse II (Corrections)	FT	A	GP	Eagle River	99	20 M / N	12.0		98,001	4,025	0	54,643	156,669	78,335
20-0024	15479	Nurse III (Corrections)	FT	A	SS	Kenai	500	21 F / J	12.0		97,126	0	0	54,660	151,786	75,893
20-0025	15480	Nurse II (Corrections)	FT	A	GP	Kenai	100	20 J / K	12.0		87,744	3,603	0	50,859	142,206	71,103
20-0026	15481	Nurse II (Corrections)	FT	A	GP	Eagle River	100	20 D / E	12.0		78,140	3,209	0	47,316	128,665	64,333
20-0027	15482	Medical Infor/Services Assist	FT	A	GP	Eagle River	100	10 J / K	12.0		43,148	1,772	0	34,408	79,328	39,664
20-0028	15483	Certified Nurse Aide I	FT	A	GP	Anchorage	100	10 A / B	12.0		34,620	1,422	0	31,262	67,304	33,652
20-0029	15484	Medical Infor/Services Assist	FT	A	GP	Anchorage	100	10 D / E	12.0		37,815	1,553	0	32,440	71,808	35,904
20-0030	15485	Licensed Prac Nurse	FT	A	GP	Anchorage	100	17 N	12.0		78,396	3,220	0	47,411	129,027	64,514
20-0031	15486	Nurse II (Corrections)	FT	A	GP	Anchorage	100	20 D / E	12.0		75,672	3,108	0	46,406	125,186	62,593
20-0032	15487	Nurse II (Corrections)	FT	A	GP	Anchorage	100	20 E / F	12.0		79,110	3,249	0	47,674	130,033	65,017
20-0034	15488	Pharmacy Technician	FT	A	GP	Anchorage	200	12 K / L	12.0		50,321	2,067	0	37,054	89,442	44,721
20-0035	15489	Medical Director	FT	A	XE	Anchorage	N00	28 F	12.0		235,000	0	0	99,119	334,119	167,060
20-0036	15490	Nurse II (Corrections)	FT	A	GP	Anchorage	100	20 K / L	12.0		92,177	3,785	0	52,494	148,456	74,228
20-0037	15491	Nurse III (Corrections)	FT	A	SS	Anchorage	100	21 C	12.0		86,400	0	0	50,703	137,103	68,552
20-1071	15677	Health Practitioner I	FT	A	GP	Anchorage	100	24 E / F	12.0		105,127	4,317	0	57,272	166,716	83,358
20-1072	15678	Nurse II (Corrections)	FT	A	GP	Anchorage	100	20 G / J	12.0		86,466	3,551	0	50,388	140,405	70,203
20-1073	15679	Nurse II (Corrections)	FT	A	GP	Anchorage	100	20 L / M	12.0		93,663	3,846	0	53,043	150,552	75,276
20-1074	15680	Nurse II (Corrections)	FT	A	GP	Anchorage	100	20 G	12.0		84,300	3,462	0	49,589	137,351	68,676
20-1075	15681	Nurse II (Corrections)	FT	A	GP	Anchorage	100	20 C / D	12.0		75,398	3,096	0	46,305	124,799	62,400
20-1076	15682	Nurse II (Corrections)	FT	A	GP	Anchorage	100	20 E / F	12.0		80,758	3,316	0	48,282	132,356	66,178
20-2010	15766	Licensed Prac Nurse	FT	A	GP	Eagle River	100	17 F / G	12.0		64,988	2,669	0	42,464	110,121	110,121
20-3014	28434	Dental Hygienist	FT	A	GP	Mackenzie Point	100	16 J	12.0		64,536	2,650	0	42,298	109,484	54,742

Note: If a position is split, an asterisk (\*) will appear in the Split/Count column. If the split position is also counted in the component, two asterisks (\*\*) will appear in this column.  
 [No valid job title] appearing in the Job Class Title indicates that the PCN has an invalid class code or invalid range for the class code effective date of this scenario.

## Personal Services Expenditure Detail (1445)

### Department of Corrections

**Scenario:** FY2020 Governor Amended (15636)  
**Component:** Physical Health Care (2952)  
**RDU:** Health and Rehabilitation Services (638)

Status	PCN	Tracking ID	Job Class Title	Time Status	Retire Code	Barg Unit	Location	Salary Sched	Range / Steps	Comp Months	Split / Count	Annual Salaries	COLA	Premium Pay	Annual Benefits	Total Costs	UGF Amount
20-4003		1302	Nurse II (Corrections)	FT	A	GP	Fairbanks	103	20 G	12.0		86,832	3,566	0	50,523	140,921	70,461
20-4004		1304	Nurse II (Corrections)	FT	A	GP	Fairbanks	103	20 K	12.0		92,568	3,802	0	52,639	149,009	74,505
20-4005		1303	Licensed Prac Nurse	FT	A	GP	Eagle River	100	17 E / F	12.0		63,323	2,600	0	41,850	107,773	53,887
20-4006		1301	Nurse I (Corrections)	FT	A	GP	Juneau	105	19 D / E	12.0		74,412	3,056	0	45,941	123,409	61,705
20-4008		27451	Certified Nurse Aide I	FT	A	GP	Mackenzie Point	100	10 B / C	12.0		35,748	1,468	0	31,678	68,894	34,447
20-4009		27464	Nurse III (Corrections)	FT	A	SS	Mackenzie Point	500	21 F	12.0		94,332	0	0	53,629	147,961	73,981
20-4010		27465	Nurse II (Corrections)	FT	A	GP	Mackenzie Point	100	20 G	12.0		84,300	3,462	0	49,589	137,351	68,676
20-4011		27466	Nurse II (Corrections)	FT	A	GP	Mackenzie Point	100	20 E / F	12.0		80,655	3,312	0	48,244	132,211	66,106
20-4012		27469	Nurse II (Corrections)	FT	A	GP	Mackenzie Point	100	20 D / E	12.0		77,905	3,199	0	47,229	128,333	64,167
20-4013		27468	Nurse II (Corrections)	FT	A	GP	Mackenzie Point	100	20 G	12.0		84,300	3,462	0	49,589	137,351	68,676
20-4014		27467	Nurse II (Corrections)	FT	A	GP	Mackenzie Point	100	20 D / E	12.0		77,905	3,199	0	47,229	128,333	64,167
20-4015		27461	Qa & Ur Nurse	FT	A	SS	Anchorage	200	24 J	12.0		116,664	0	0	61,868	178,532	89,266
20-4016		27472	Nurse II (Corrections)	FT	A	GP	Mackenzie Point	100	20 F / G	12.0		81,242	3,336	0	48,460	133,038	66,519
20-4017		28426	Licensed Prac Nurse	FT	A	GP	Mackenzie Point	100	17 D / E	12.0		61,980	2,545	0	41,355	105,880	52,940
20-4018		28427	Licensed Prac Nurse	FT	A	GP	Mackenzie Point	100	17 F / G	12.0		64,988	2,669	0	42,464	110,121	55,061
20-4019		28428	Licensed Prac Nurse	FT	A	GP	Mackenzie Point	100	17 G	12.0		66,192	2,718	0	42,909	111,819	55,910
20-4020		28293	Nurse II (Corrections)	FT	A	GP	Mackenzie Point	100	20 G	12.0		84,300	3,462	0	49,589	137,351	68,676
20-4021		28294	Nurse I (Corrections)	FT	A	GP	Mackenzie Point	100	19 D	12.0		68,712	2,822	0	43,838	115,372	57,686
20-4022		28295	Nurse II (Corrections)	FT	A	GP	Mackenzie Point	100	20 C / D	12.0		75,581	3,104	0	46,372	125,057	62,529
20-4023		28296	Nurse II (Corrections)	FT	A	GP	Mackenzie Point	100	20 G	12.0		84,300	3,462	0	49,589	137,351	68,676
20-4193		15972	Nurse III (Corrections)	FT	A	SS	Eagle River	500	21 J	12.0		97,380	0	0	54,754	152,134	76,067
20-4194		15973	Licensed Prac Nurse	FT	A	GP	Fairbanks	103	17 D / E	12.0		63,840	2,622	0	42,041	108,503	54,252
20-4195		15974	Health Practitioner I	FT	A	GP	Fairbanks	103	24 F / G	12.0		112,761	4,631	0	60,088	177,480	177,480
20-4330		16060	Health Practitioner I	FT	A	GP	Kenai	100	24 C / D	12.0		97,107	3,988	0	54,313	155,408	77,704
20-4331		16061	Licensed Prac Nurse	FT	A	GP	Anchorage	100	17 E / F	12.0		63,233	2,597	0	41,817	107,647	53,824
20-5136		16203	Nurse II (Corrections)	FT	A	GP	Juneau	105	20 D	12.0		77,148	3,168	0	46,950	127,266	63,633
20-5183		16241	Licensed Prac Nurse	FT	A	GP	Juneau	105	17 D / E	12.0		65,076	2,672	0	42,497	110,245	55,123
20-5218		16265	Nurse IV (Corrections)	FT	A	SS	Anchorage	200	23 E / F	12.0		106,197	0	0	58,006	164,203	164,203
20-5328		16317	Nurse III (Corrections)	FT	A	SS	Ketchikan	500	21 F	12.0		94,332	0	0	53,629	147,961	73,981

Note: If a position is split, an asterisk (\*) will appear in the Split/Count column. If the split position is also counted in the component, two asterisks (\*\*) will appear in this column.  
 [No valid job title] appearing in the Job Class Title indicates that the PCN has an invalid class code or invalid range for the class code effective date of this scenario.

## Personal Services Expenditure Detail (1445)

### Department of Corrections

**Scenario:** FY2020 Governor Amended (15636)  
**Component:** Physical Health Care (2952)  
**RDU:** Health and Rehabilitation Services (638)

Status	PCN	Tracking ID	Job Class Title	Time Status	Retire Code	Barg Unit	Location	Salary Sched	Range / Steps	Comp Months	Split / Count	Annual Salaries	COLA	Premium Pay	Annual Benefits	Total Costs	UGF Amount
20-5349	16331	Nurse II (Corrections)	FT	A	GP	Ketchikan	100	20	F / G	12.0		83,049	3,411	0	49,127	135,587	67,794
20-5548	27470	Licensed Prac Nurse	FT	A	GP	Mackenzie Point	100	17	G	12.0		66,192	2,718	0	42,909	111,819	55,910
20-6123	16382	Nurse II (Corrections)	FT	A	GP	Anchorage	100	20	D	12.0		73,476	3,017	0	45,596	122,089	61,045
20-6186	16437	Health Practitioner I	FT	A	SS	Mackenzie Point	100	24	D / E	12.0		109,308	0	0	59,154	168,462	84,231
20-6187	16438	Nurse III (Corrections)	FT	A	SS	Palmer	500	21	D	12.0		85,524	0	0	50,380	135,904	67,952
20-6194	16440	Health Practitioner I	FT	A	SS	Palmer	100	24	K / L	12.0		125,551	0	0	65,146	190,697	95,349
20-6416	16537	Nurse II (Corrections)	FT	A	GP	Kenai	100	20	L	12.0		92,784	3,810	0	52,718	149,312	74,656
20-6417	16538	Nurse II (Corrections)	FT	A	GP	Kenai	100	20	K / L	12.0		89,868	3,691	0	51,643	145,202	72,601
20-6418	16539	Licensed Prac Nurse	FT	A	GP	Kenai	99	17	P	12.0		85,212	3,499	0	49,925	138,636	69,318
20-6503	16584	Health Practitioner I	FT	A	GP	Anchorage	100	24	G	12.0		111,144	4,564	0	59,491	175,199	87,600
20-6513	16594	Nurse II (Corrections)	FT	A	GP	Nome	137	20	G	12.0		115,488	4,743	0	61,094	181,325	90,663
20-6581	16655	Nurse II (Corrections)	FT	A	GP	Eagle River	100	20	G	12.0		84,300	3,462	0	49,589	137,351	68,676
20-6583	16657	Protective Services Spec II	FT	A	GP	Eagle River	100	17	K / L	12.0		72,668	2,984	0	45,298	120,950	120,950
20-6605	16661	Nurse III (Corrections)	FT	A	SS	Juneau	505	21	F / J	12.0		99,449	0	0	55,517	154,966	77,483
20-6771	16786	Nurse II (Corrections)	FT	A	GP	Anchorage	100	20	F / G	12.0		81,937	3,365	0	48,717	134,019	67,010
20-6772	16787	Nurse II (Corrections)	FT	A	GP	Anchorage	100	20	F / G	12.0		83,049	3,411	0	49,127	135,587	67,794
20-6775	16790	Nurse III (Corrections)	FT	A	SS	Anchorage	500	21	F / J	12.0		95,094	0	0	53,910	149,004	74,502
20-7302	16941	Medical Record Admin	FT	A	SS	Anchorage	100	17	B / C	12.0		62,730	0	0	41,971	104,701	52,351
20-7304	16942	Pharmacy Technician	FT	A	GP	Anchorage	200	12	D / E	12.0		42,963	1,764	0	34,339	79,066	39,533
20-7305	16943	Nurse III (Corrections)	FT	A	SS	Anchorage	500	21	D	12.0		85,524	0	0	50,380	135,904	67,952
20-7306	16944	Medical Infor/Services Assist	FT	A	GP	Anchorage	99	10	M	12.0		47,205	1,939	0	35,904	85,048	42,524
20-7308	16945	Pharmacy Technician	FT	A	GP	Anchorage	99	12	N	12.0		55,404	2,275	0	38,929	96,608	48,304
20-7310	16946	Health Practitioner II	FT	A	SS	Anchorage	100	25	D / E	12.0		117,084	0	0	62,023	179,107	89,554
20-7312	16947	Medical Officer	FT	A	XE	Anchorage	N00	0	F	12.0		249,917	0	0	103,708	353,625	176,813
20-7313	16948	Dental Hygienist	FT	A	GP	Anchorage	99	16	Q	12.0		81,963	3,366	0	48,726	134,055	67,028
20-7317	16951	Health Practitioner I	FT	A	SS	Eagle River	100	24	F / J	12.0		117,770	0	0	62,276	180,046	90,023
20-7318	16952	Nurse II (Corrections)	FT	A	GP	Anchorage	100	20	E / F	12.0		78,801	3,236	0	47,560	129,597	64,799
20-7319	16953	Nurse II (Corrections)	FT	A	GP	Anchorage	100	20	F / G	12.0		81,242	3,336	0	48,460	133,038	66,519
20-7320	16954	Nurse II (Corrections)	FT	A	GP	Nome	137	20	G / J	12.0		117,836	4,839	0	61,960	184,635	92,318

Note: If a position is split, an asterisk (\*) will appear in the Split/Count column. If the split position is also counted in the component, two asterisks (\*\*) will appear in this column.  
 [No valid job title] appearing in the Job Class Title indicates that the PCN has an invalid class code or invalid range for the class code effective date of this scenario.

## Personal Services Expenditure Detail (1445)

### Department of Corrections

**Scenario:** FY2020 Governor Amended (15636)  
**Component:** Physical Health Care (2952)  
**RDU:** Health and Rehabilitation Services (638)

Status	PCN	Tracking ID	Job Class Title	Time Status	Retire Code	Barg Unit	Location	Salary Sched	Range / Steps	Comp Months	Split / Count	Annual Salaries	COLA	Premium Pay	Annual Benefits	Total Costs	UGF Amount
20-7323	16957	Licensed Prac Nurse	FT	A	GP	Anchorage	100	17 E / F	12.0	63,323	2,600	0	41,850	107,773	53,887		
20-7324	16958	Nurse II (Corrections)	FT	A	GP	Bethel	150	20 F / G	12.0	123,120	5,056	0	63,909	192,085	96,043		
20-7325	16959	Nurse II (Corrections)	FT	A	GP	Bethel	150	20 F / G	12.0	122,078	5,013	0	63,525	190,616	95,308		
20-7328	16961	Medical Infor/Services Assist	FT	A	GP	Anchorage	200	10 D / E	12.0	38,124	1,566	0	32,554	72,244	36,122		
20-7329	16962	Nursing Director	FT	A	SS	Anchorage	200	25 D / E	12.0	117,084	0	0	62,023	179,107	89,554		
20-7331	16964	Licensed Prac Nurse	FT	A	GP	Anchorage	99	17 P	12.0	85,212	3,499	0	49,925	138,636	69,318		
20-7688	17094	Nurse II (Corrections)	FT	A	GP	Anchorage	100	20 D	12.0	73,476	3,017	0	45,596	122,089	61,045		
20-7689	17095	Nurse II (Corrections)	FT	A	GP	Anchorage	100	20 G	12.0	84,300	3,462	0	49,589	137,351	68,676		
20-7690	17096	Nurse I (Corrections)	FT	A	GP	Anchorage	100	19 E / F	12.0	74,117	3,044	0	45,832	122,993	61,497		
20-7691	17097	Nurse I (Corrections)	FT	A	GP	Anchorage	100	20 F / G	12.0	83,466	3,428	0	49,281	136,175	68,088		
20-7692	17098	Nurse I (Corrections)	FT	A	GP	Anchorage	100	19 D / E	12.0	71,089	2,919	0	44,715	118,723	59,362		
20-7693	17099	Licensed Prac Nurse	FT	A	GP	Anchorage	100	17 F / G	12.0	65,504	2,690	0	42,655	110,849	55,425		
20-7963	17100	Licensed Prac Nurse	FT	A	GP	Fairbanks	103	17 N / O	12.0	82,534	3,389	0	48,937	134,860	67,430		
20-8074	17168	Health Practitioner II	FT	A	SS	Anchorage	100	25 D / E	12.0	117,084	0	0	62,023	179,107	89,554		
20-8129	17220	Nurse II (Corrections)	FT	A	GP	Anchorage	100	20 C / D	12.0	75,489	3,100	0	46,338	124,927	62,464		
20-8134	17225	Nurse II (Corrections)	FT	A	GP	Anchorage	100	20 E / F	12.0	78,698	3,232	0	47,522	129,452	64,726		
20-8143	17234	Health Practitioner I	FT	A	SS	Seward	100	24 D / E	12.0	109,308	0	0	59,154	168,462	84,231		
20-8157	17245	Protective Services Spec III	FT	A	SS	Anchorage	500	19 K / L	12.0	86,304	0	0	50,668	136,972	68,486		
20-8211	17289	Nurse III (Corrections)	FT	A	SS	Seward	500	21 J / K	12.0	98,964	0	0	55,338	154,302	77,151		
20-8212	17290	Nurse I (Corrections)	FT	A	GP	Seward	100	19 E	12.0	73,476	3,017	0	45,596	122,089	61,045		
20-8213	17291	Nurse I (Corrections)	FT	A	GP	Anchorage	100	19 E / F	12.0	74,483	3,059	0	45,967	123,509	61,755		
20-8214	17292	Nurse II (Corrections)	FT	A	GP	Seward	100	20 G / J	12.0	84,870	3,485	0	49,799	138,154	69,077		
20-8215	17293	Licensed Prac Nurse	FT	A	GP	Anchorage	100	17 N	12.0	79,161	3,251	0	47,693	130,105	65,053		
20-8216	17294	Nurse I (Corrections)	FT	A	GP	Anchorage	100	19 E / F	12.0	74,117	3,044	0	45,832	122,993	61,497		
20-8217	17295	Nurse I (Corrections)	FT	A	GP	Anchorage	100	19 E / F	12.0	73,568	3,021	0	45,630	122,219	61,110		
20-8218	17296	Licensed Prac Nurse	FT	A	GP	Seward	100	17 G / J	12.0	68,396	2,809	0	43,722	114,927	57,464		
20-8219	17297	Licensed Prac Nurse	FT	A	GG	Seward	100	17 P / Q	12.0	85,558	3,514	0	50,053	139,125	69,563		
20-8220	17298	Nurse II (Corrections)	FT	A	GP	Seward	100	20 G	12.0	84,300	3,462	0	49,589	137,351	68,676		
20-8221	17299	Nurse II (Corrections)	FT	A	GP	Kenai	100	20 G / J	12.0	84,414	3,467	0	49,631	137,512	68,756		

Note: If a position is split, an asterisk (\*) will appear in the Split/Count column. If the split position is also counted in the component, two asterisks (\*\*) will appear in this column.  
 [No valid job title] appearing in the Job Class Title indicates that the PCN has an invalid class code or invalid range for the class code effective date of this scenario.

## Personal Services Expenditure Detail (1445)

### Department of Corrections

**Scenario:** FY2020 Governor Amended (15636)  
**Component:** Physical Health Care (2952)  
**RDU:** Health and Rehabilitation Services (638)

Status PCN	Tracking ID	Job Class Title	Time Status	Retire Code	Barg Unit	Location	Salary Sched	Range / Steps	Comp Months	Split / Count	Annual Salaries	COLA	Premium Pay	Annual Benefits	Total Costs	UGF Amount
20-8653	2689	Nurse II (Corrections)	FT	A	GP	Eagle River	100	20 G	12.0		84,300	3,462	0	49,589	137,351	68,676
20-8654	2688	Licensed Prac Nurse	FT	A	GP	Seward	100	17 D / E	12.0		61,980	2,545	0	41,355	105,880	52,940
20-8656	27463	Health Practitioner I	FT	A	SS	Mackenzie Point	100	24 C	12.0		105,768	0	0	57,848	163,616	81,808
20-8657	27471	Licensed Prac Nurse	FT	A	GP	Mackenzie Point	100	17 G	12.0		66,192	2,718	0	42,909	111,819	55,910
20-8658	28455	Medical Infor/Services Assist	FT	A	GP	Mackenzie Point	100	10 D / E	12.0		38,508	1,581	0	32,696	72,785	36,393
20-8659	28456	Licensed Prac Nurse	FT	A	GP	Eagle River	100	17 F / G	12.0		65,160	2,676	0	42,528	110,364	55,182
20-8661	27476	Licensed Prac Nurse	FT	A	GP	Eagle River	100	17 F / G	12.0		65,074	2,672	0	42,496	110,242	110,242
20-8663	28425	Health Practitioner I	FT	A	SS	Mackenzie Point	100	24 F / J	12.0		117,296	0	0	62,101	179,397	89,699
20-8666	28452	Nurse II (Corrections)	FT	A	GP	Mackenzie Point	100	20 D / E	12.0		77,787	3,194	0	47,186	128,167	64,084
20-8667	28453	Nurse I (Corrections)	FT	A	GP	Mackenzie Point	100	19 E / F	12.0		73,659	3,025	0	45,663	122,347	61,174
20-8668	28429	Licensed Prac Nurse	FT	A	GP	Mackenzie Point	100	17 G	12.0		66,192	2,718	0	42,909	111,819	55,910
20-8669	28430	Licensed Prac Nurse	FT	A	GP	Mackenzie Point	100	17 J / K	12.0		69,257	2,844	0	44,039	116,140	58,070
20-8670	28431	Licensed Prac Nurse	FT	A	GP	Mackenzie Point	100	17 E / F	12.0		62,159	2,553	0	41,421	106,133	53,067
20-8671	28432	Licensed Prac Nurse	FT	A	GP	Mackenzie Point	100	17 E / F	12.0		62,786	2,578	0	41,652	107,016	53,508
20-8672	28433	Licensed Prac Nurse	FT	A	GP	Mackenzie Point	100	17 J	12.0		68,976	2,833	0	43,936	115,745	57,873
20-8673	28436	Nurse II (Corrections)	FT	A	GP	Mackenzie Point	100	20 D	12.0		73,476	3,017	0	45,596	122,089	61,045
20-8674	28446	Nurse II (Corrections)	FT	A	GP	Mackenzie Point	100	20 C	12.0		73,476	3,017	0	45,596	122,089	61,045
20-8675	28447	Nurse II (Corrections)	FT	A	GP	Mackenzie Point	100	20 G / J	12.0		85,326	3,504	0	49,967	138,797	69,399
20-8676	28448	Nurse II (Corrections)	FT	A	GP	Mackenzie Point	100	20 F / G	12.0		83,327	3,422	0	49,230	135,979	67,990
20-8677	28449	Nurse II (Corrections)	FT	A	GP	Mackenzie Point	100	20 E / F	12.0		79,316	3,257	0	47,750	130,323	65,162
20-8678	28450	Nurse III (Corrections)	FT	A	SS	Mackenzie Point	500	21 C	12.0		85,524	0	0	50,380	135,904	67,952
20-8819	17403	Nurse II (Corrections)	FT	A	GP	Palmer	100	20 G	12.0		84,300	3,462	0	49,589	137,351	68,676
20-8820	17404	Nurse II (Corrections)	FT	A	GP	Palmer	100	20 Q	12.0		108,871	4,471	0	58,653	171,995	85,998
20-X001	17526	Pharmacist (Lead W/Adv Cert)	FT	A	XE	Anchorage	N00	29 F / J	12.0		131,760	0	0	67,293	199,053	99,527
20-X019	17528	Medical Director	FT	A	XE	Anchorage	N00	28 A	12.0		155,638	0	0	74,707	230,345	115,173
20-X342	29938	Medical Director	FT	A	XE	Mackenzie Point	N00	28 K	12.0		140,000	0	0	69,897	209,897	104,949

Note: If a position is split, an asterisk (\*) will appear in the Split/Count column. If the split position is also counted in the component, two asterisks (\*\*) will appear in this column.  
 [No valid job title] appearing in the Job Class Title indicates that the PCN has an invalid class code or invalid range for the class code effective date of this scenario.

**Personal Services Expenditure Detail (1445)**

**Department of Corrections**

**Scenario:** FY2020 Governor Amended (15636)  
**Component:** Physical Health Care (2952)  
**RDU:** Health and Rehabilitation Services (638)

Status	PCN	Tracking ID	Job Class Title	Time Status	Retire Code	Barg Unit	Location	Salary Sched	Range / Steps	Comp Months	Split / Count	Annual Salaries	COLA	Premium Pay	Annual Benefits	Total Costs	UGF Amount
20-X356		28454	Medical Officer	FT	A	XE	Mackenzie Point	N00	0 F	12.0		235,000	0	0	99,119	334,119	167,060
													<b>Total Salary Costs:</b>	12,298,210			
													<b>Total COLA:</b>	353,833			
													<b>Total Premium Pay:</b>	0			
													<b>Total Benefits:</b>	7,169,091			
													<b>Total Pre-Vacancy:</b>	19,821,134			
													<b>Minus Vacancy Adjustment of 3.99%:</b>	(791,334)			
													<b>Total Post-Vacancy:</b>	19,029,800			
													<b>Plus Lump Sum Premium Pay:</b>	1,630,000			
													<b>Personal Services Line 100:</b>	20,659,800			
<b>Total Component Months:</b>				1716.0													

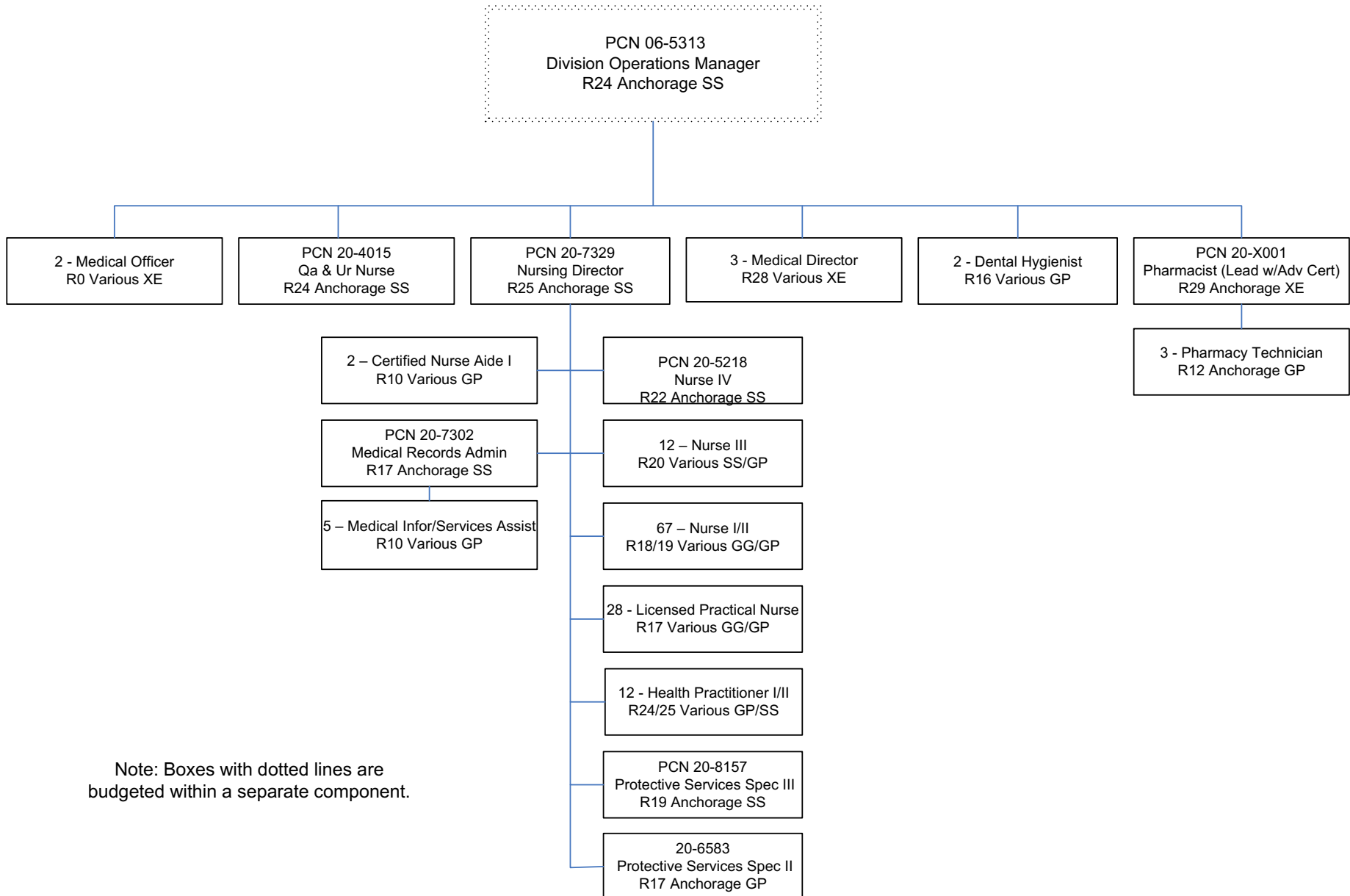
<b>PCN Funding Sources:</b>		<b>Pre-Vacancy</b>	<b>Post-Vacancy</b>	<b>Percent</b>
1004	General Fund Receipts	10,252,065	9,842,764	51.72%
1171	PF Dividend Appropriations in lieu of Dividends to Criminals	9,569,069	9,187,036	48.28%
<b>Total PCN Funding:</b>		<b>19,821,134</b>	<b>19,029,800</b>	<b>100.00%</b>

<b>Lump Sum Funding Sources:</b>		<b>Amount</b>	<b>Percent</b>
1004	General Fund Receipts	1,630,000	100.00%
<b>Total Lump Sum Funding:</b>		<b>1,630,000</b>	<b>100.00%</b>

Note: If a position is split, an asterisk (\*) will appear in the Split/Count column. If the split position is also counted in the component, two asterisks (\*\*) will appear in this column. [No valid job title] appearing in the Job Class Title indicates that the PCN has an invalid class code or invalid range for the class code effective date of this scenario.



*Department of Corrections*  
**Physical Health Care**  
*FY 2020 Organizational Structure*



Note: Boxes with dotted lines are budgeted within a separate component.