

**Component Detail (1077)**  
**Department of Education and Early Development**

**Component:** Professional Teaching Practices Commission (190)

Non-Formula Component

**RDU:** Commissions and Boards (61)

IRIS AP Type: EPTP

	FY2018 Actuals (15158)	FY2019 Conference Committee (14954)	FY2019 Authorized (14962)	FY2019 Management Plan (14994)	FY2020 Governor (15610)	FY2020 Governor Amended (15636)	FY2020 Governor vs FY2020 Governor Amended		
1000 Personal Services	175.9	172.0	172.0	154.4	159.1	154.4	-4.7	-3.0%	
2000 Travel	12.2	16.7	16.7	16.7	16.7	10.6	-6.1	-36.5%	
3000 Services	72.5	67.5	67.5	85.1	81.1	85.1	4.0	4.9%	
4000 Commodities	0.2	2.6	2.6	2.6	2.6	2.6	0.0	0.0%	
5000 Capital Outlay	0.0	0.0	0.0	0.0	0.0	0.0	0.0	0.0%	
7000 Grants, Benefits	0.0	0.0	0.0	0.0	0.0	0.0	0.0	0.0%	
8000 Miscellaneous	0.0	0.0	0.0	0.0	0.0	0.0	0.0	0.0%	
<b>Totals</b>	<b>260.8</b>	<b>258.8</b>	<b>258.8</b>	<b>258.8</b>	<b>259.5</b>	<b>252.7</b>	<b>-6.8</b>	<b>-2.6%</b>	
<b><u>Funding Sources:</u></b>									
1005 GF/Prgm (DGF)	260.8	258.8	258.8	258.8	259.5	252.7	-6.8	-2.6%	
<b><u>Funding Totals:</u></b>									
Unrestricted General (UGF)	0.0	0.0	0.0	0.0	0.0	0.0	0.0	0.0%	
Designated General (DGF)	260.8	258.8	258.8	258.8	259.5	252.7	-6.8	-2.6%	
Other	0.0	0.0	0.0	0.0	0.0	0.0	0.0	0.0%	
Federal	0.0	0.0	0.0	0.0	0.0	0.0	0.0	0.0%	
<b><u>Positions:</u></b>									
Permanent Full Time	1	1	1	1	1	1	0	0.0%	
Permanent Part Time	0	0	0	0	0	0	0	0.0%	
Non Permanent	0	0	0	0	0	0	0	0.0%	

**Change Record Detail - Multiple Scenarios with Descriptions (294)**  
**Department of Education and Early Development**

**Component:** Professional Teaching Practices Commission (190)  
**RDU:** Commissions and Boards (61)

Scenario/Change Record Title	Trans Type	Totals	Personal Services	Travel	Services	Commodities	Capital Outlay	Grants, Benefits	Miscellaneous	PFT	Positions PPT	NP
***** Changes From FY2019 Conference Committee To FY2019 Authorized *****												
<b>FY2019 Conference Committee</b>	ConfCom	258.8	172.0	16.7	67.5	2.6	0.0	0.0	0.0	1	0	0
1005 GF/Prgm		258.8										
<b>Subtotal</b>		<b>258.8</b>	<b>172.0</b>	<b>16.7</b>	<b>67.5</b>	<b>2.6</b>	<b>0.0</b>	<b>0.0</b>	<b>0.0</b>	<b>1</b>	<b>0</b>	<b>0</b>
***** Changes From FY2019 Authorized To FY2019 Management Plan *****												
<b>Align Authority with Projected Expenditures</b>	LIT	0.0	-17.6	0.0	17.6	0.0	0.0	0.0	0.0	0	0	0
Align authority to support mission-related hearing officer legal counsel. Authority is available as a result of the incumbent retiring, and the position being filled at a lower step.												
<b>Subtotal</b>		<b>258.8</b>	<b>154.4</b>	<b>16.7</b>	<b>85.1</b>	<b>2.6</b>	<b>0.0</b>	<b>0.0</b>	<b>0.0</b>	<b>1</b>	<b>0</b>	<b>0</b>
***** Changes From FY2019 Management Plan To FY2020 Governor Amended *****												
<b>Executive Branch 50% Travel Reduction</b>	Dec	-6.1	0.0	-6.1	0.0	0.0	0.0	0.0	0.0	0	0	0
1005 GF/Prgm		-6.1										
50% executive branch travel reduction based on actual costs of travel in FY2018. Exceptions were made to travel essential to public safety, health, and disaster management.												
<b>Totals</b>		<b>252.7</b>	<b>154.4</b>	<b>10.6</b>	<b>85.1</b>	<b>2.6</b>	<b>0.0</b>	<b>0.0</b>	<b>0.0</b>	<b>1</b>	<b>0</b>	<b>0</b>

**Personal Services Expenditure Detail (1445)**

**Department of Education and Early Development**

**Scenario:** FY2020 Governor Amended (15636)

**Component:** Professional Teaching Practices Commission (190)

**RDU:** Commissions and Boards (61)

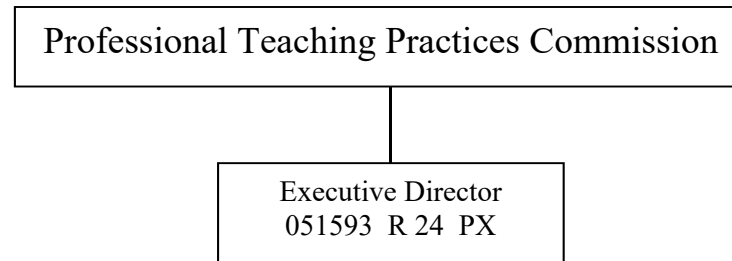
Status PCN	Tracking ID	Job Class Title	Time Status	Retire Code	Barg Unit	Location	Salary Sched	Range / Steps	Comp Months	Split / Count	Annual Salaries	COLA	Premium Pay	Annual Benefits	Total Costs	UGF Amount
05-1060	6155	Administrative Assistant I	FT	A	GP	Juneau	205	12 K	2.0	*	8,865	357	0	6,128	15,350	
05-1593	6174	Exec Secretary PTPC	FT	A	XE	Anchorage	N00	24 B / C	12.0		93,093	0	0	50,673	143,766	
															<b>Total Salary Costs:</b>	101,958
															<b>Total COLA:</b>	357
															<b>Total Premium Pay:</b>	0
															<b>Total Benefits:</b>	56,801
															<b>Total Pre-Vacancy:</b>	159,116
															<b>Minus Vacancy Adjustment of 2.52%:</b>	(4,016)
															<b>Total Post-Vacancy:</b>	155,100
															<b>Plus Lump Sum Premium Pay:</b>	0
															<b>Personal Services Line 100:</b>	155,100

PCN Funding Sources:	Pre-Vacancy	Post-Vacancy	Percent
1005 General Fund/Program Receipts	159,116	155,100	100.00%
<b>Total PCN Funding:</b>	<b>159,116</b>	<b>155,100</b>	<b>100.00%</b>

Note: If a position is split, an asterisk (\*) will appear in the Split/Count column. If the split position is also counted in the component, two asterisks (\*\*) will appear in this column. [No valid job title] appearing in the Job Class Title indicates that the PCN has an invalid class code or invalid range for the class code effective date of this scenario.



**Professional Teaching Practices Commission  
FY2020 Organizational Chart**



**Total Position Count: 1**  
**Anchorage: 1**  
**PFT: 1**  
**PPT: 0**