

Component Detail (1077)

Department of Fish and Game

Component: Central Region Fisheries Management (2168)

Non-Formula Component

IRIS AP Type: FCF2

RDU: Commercial Fisheries (143)

	FY2018 Actuals (15158)	FY2019 Conference Committee (14954)	FY2019 Authorized (14962)	FY2019 Management Plan (14994)	FY2020 Governor (15610)	FY2020 Governor Amended (15636)	FY2020 Governor vs FY2020 Governor Amended	
1000 Personal Services	7,914.3	8,183.8	8,183.8	8,183.8	8,353.5	8,022.8	-330.7	-4.0%
2000 Travel	92.3	97.0	97.0	97.0	97.0	50.9	-46.1	-47.5%
3000 Services	816.4	2,098.0	2,098.0	2,140.0	2,120.0	2,120.0	0.0	0.0%
4000 Commodities	492.9	633.5	633.5	633.5	633.5	633.5	0.0	0.0%
5000 Capital Outlay	15.0	78.2	78.2	78.2	78.2	78.2	0.0	0.0%
7000 Grants, Benefits	0.0	0.0	0.0	0.0	0.0	0.0	0.0	0.0%
8000 Miscellaneous	0.0	0.0	0.0	0.0	0.0	0.0	0.0	0.0%
Totals	9,330.9	11,090.5	11,090.5	11,132.5	11,282.2	10,905.4	-376.8	-3.3%
Funding Sources:								
1002 Fed Rcpts (Fed)	166.8	238.2	238.2	238.2	240.4	235.9	-4.5	-1.9%
1003 G/F Match (UGF)	175.2	267.9	267.9	267.9	271.6	267.9	-3.7	-1.4%
1004 Gen Fund (UGF)	6,966.9	7,175.1	7,175.1	7,175.1	7,451.3	7,139.9	-311.4	-4.2%
1005 GF/Prgm (DGF)	219.7	268.7	268.7	268.7	275.8	266.8	-9.0	-3.3%
1007 I/A Rcpts (Other)	14.6	115.0	115.0	115.0	95.0	94.2	-0.8	-0.8%
1061 CIP Rcpts (Other)	301.7	187.1	187.1	187.1	188.0	187.1	-0.9	-0.5%
1108 Stat Desig (Other)	966.9	1,901.2	1,901.2	1,901.2	1,929.2	1,895.3	-33.9	-1.8%
1109 Test Fish (DGF)	103.8	359.9	359.9	359.9	365.2	359.9	-5.3	-1.5%
1201 CFEC Rcpts (DGF)	415.3	416.4	416.4	458.4	462.9	458.4	-4.5	-1.0%
1223 CharterRLF (DGF)	0.0	161.0	161.0	161.0	2.8	0.0	-2.8	-100.0%
Funding Totals:								
Unrestricted General (UGF)	7,142.1	7,443.0	7,443.0	7,443.0	7,722.9	7,407.8	-315.1	-4.1%
Designated General (DGF)	738.8	1,206.0	1,206.0	1,248.0	1,106.7	1,085.1	-21.6	-2.0%
Other	1,283.2	2,203.3	2,203.3	2,203.3	2,212.2	2,176.6	-35.6	-1.6%
Federal	166.8	238.2	238.2	238.2	240.4	235.9	-4.5	-1.9%
Positions:								
Permanent Full Time	43	43	43	43	44	44	0	0.0%
Permanent Part Time	119	121	121	121	121	121	0	0.0%
Non Permanent	0	0	0	0	0	0	0	0.0%

Change Record Detail - Multiple Scenarios with Descriptions (294)
Department of Fish and Game

Component: Central Region Fisheries Management (2168)
RDU: Commercial Fisheries (143)

Scenario/Change Record Title	Trans Type	Totals	Personal Services	Travel	Services	Commodities	Capital Outlay	Grants, Benefits	Miscellaneous	PFT	Positions PPT	NP
***** Changes From FY2019 Conference Committee To FY2019 Authorized *****												
FY2019 Conference Committee												
	ConfCom	11,090.5	8,183.8	97.0	2,098.0	633.5	78.2	0.0	0.0	43	121	0
1002 Fed Rcpts		238.2										
1003 G/F Match		267.9										
1004 Gen Fund		7,175.1										
1005 GF/Prgm		268.7										
1007 I/A Rcpts		115.0										
1061 CIP Rcpts		187.1										
1108 Stat Desig		1,901.2										
1109 Test Fish		359.9										
1201 CFEC Rcpts		416.4										
1223 CharterRLF		161.0										
Subtotal		11,090.5	8,183.8	97.0	2,098.0	633.5	78.2	0.0	0.0	43	121	0
***** Changes From FY2019 Authorized To FY2019 Management Plan *****												
Transfer from Statewide Fisheries Management for Planned Spending												
	Trin	42.0	0.0	0.0	42.0	0.0	0.0	0.0	0.0	0	0	0
1201 CFEC Rcpts		42.0										
Transfer Commercial Fisheries Entry Commission receipt authority from the Statewide Fisheries Management component to align with project needs.												
Subtotal		11,132.5	8,183.8	97.0	2,140.0	633.5	78.2	0.0	0.0	43	121	0
***** Changes From FY2019 Management Plan To FY2020 Governor Amended *****												
Reverse Bristol Bay Science Research Institute Watershed Projects (FY18-FY19)												
	OTI	-800.0	-450.0	-14.8	-275.2	-60.0	0.0	0.0	0.0	0	0	0
1108 Stat Desig		-800.0										
Technical reversal of one-time appropriation.												
Restore Bristol Bay Science Research Institute Watershed Projects (FY20-FY23)												
	IncT	800.0	450.0	14.8	275.2	60.0	0.0	0.0	0.0	0	0	0
1108 Stat Desig		800.0										

Transfer to Southeast Region Fisheries Management for Planned Spending

Change Record Detail - Multiple Scenarios with Descriptions (294)
Department of Fish and Game

Component: Central Region Fisheries Management (2168)
RDU: Commercial Fisheries (143)

Scenario/Change Record Title	Trans Type	Totals	Personal Services	Travel	Services	Commodities	Capital Outlay	Grants, Benefits	Miscellaneous	Positions		NP
										PFT	PPT	
1007 I/A Rcpts	Trout	-20.0	0.0	0.0	-20.0	0.0	0.0	0.0	0.0	0	0	0
Transfer interagency receipt authority to the Southeast Region Fisheries Management component to align with project needs.												
Transfer Analyst Programmer II (11-7045) from Westward Region Fisheries Management												
	Trin	0.0	0.0	0.0	0.0	0.0	0.0	0.0	0.0	1	0	0
Transfer (11-7045) Full-Time, Analyst Programmer II, range 16, located in Anchorage from the Westward Region Fisheries Management component. The transfer of this position is critical in ensuring maintenance and development of databases, including OceanAK, that are essential for in-season fishery data tracking. This position will serve as lead in redeveloping online vessel registration for Bristol Bay salmon fisheries and will also serve as lead in implementing Central region's data salvage project.												
Executive Branch 50% Travel Reduction												
	Dec	-46.1	0.0	-46.1	0.0	0.0	0.0	0.0	0.0	0	0	0
1002 Fed Rcpts		-2.3										
1004 Gen Fund		-35.2										
1005 GF/Prgm		-1.9										
1007 I/A Rcpts		-0.8										
1108 Stat Desig		-5.9										
50% executive branch travel reduction based on actual costs of travel in FY2018. Exceptions were made to travel essential to public safety, health, and disaster management.												
Eliminate Charter Revolving Loan Fund												
	Dec	-161.0	-161.0	0.0	0.0	0.0	0.0	0.0	0.0	0	0	0
1223 CharterRLF		-161.0										
In FY2019 increments were added to the Division of Commercial Fisheries Budget for specific projects. The fund source, The Charter Revolving Loan Fund (CRLF), is no longer available.												
Totals		10,905.4	8,022.8	50.9	2,120.0	633.5	78.2	0.0	0.0	44	121	0

Personal Services Expenditure Detail (1445)

Department of Fish and Game

Scenario: FY2020 Governor Amended (15636)

Component: Central Region Fisheries Management (2168)

RDU: Commercial Fisheries (143)

Status	PCN	Tracking ID	Job Class Title	Time Status	Retire Code	Barg Unit	Location	Salary Sched	Range / Steps	Comp Months	Split / Count	Annual Salaries	COLA	Premium Pay	Annual Benefits	Total Costs	UGF Amount
11-1019		12332	Fishery Biologist III	FT	A	SS	Soldotna	99	18 P / Q	12.0		95,809	0	0	52,296	148,105	148,105
11-1020		12333	Fish and Game Coordinator	FT	A	SS	Anchorage	200	22 L	12.0		108,636	0	7,651	59,449	175,736	175,736
11-1022		12335	Fishery Biologist IV	FT	A	SS	Soldotna	200	20 L / M	12.0		95,382	0	685	52,386	148,453	148,453
11-1024		12337	Fishery Biologist III	FT	A	SS	Cordova	99	18 L	12.0		87,146	0	0	49,270	136,416	
11-1026		12338	Fish & Game Program Tech	FT	A	GP	Cordova	99	12 N	12.0		60,900	2,465	0	39,763	103,128	
11-1027		12339	Fishery Biologist III	FT	A	SS	Homer	99	18 M	12.0		85,992	0	3,300	50,020	139,312	139,312
11-1028		12340	Fishery Biologist III	FT	A	SS	Homer	99	18 P / Q	12.0		91,347	0	800	51,017	143,164	143,164
11-1039		12349	Fishery Biologist III	FT	A	SS	Dillingham	99	18 O	12.0		125,580	0	0	62,695	188,275	188,275
11-1041		29039	Boat Officer I	PT	A	GP	Homer	200	13 B / C	4.0		14,014	1,223	16,200	16,717	48,154	36,116
11-1042		12352	Fishery Biologist III	FT	A	SS	Anchorage	200	18 K	12.0		80,664	0	9,000	50,150	139,814	139,814
11-1043		12353	Fishery Biologist II	FT	A	SS	Soldotna	200	16 C / D	12.0		60,112	0	0	39,827	99,939	99,939
11-1054		12360	Administrative Assistant II	FT	A	SS	Anchorage	600	14 K / L	12.0		62,217	0	0	40,563	102,780	102,780
11-1055		12361	Information Officer II	FT	A	GP	Anchorage	200	17 C	6.0	**	28,796	1,166	0	19,304	49,266	49,266
11-1063		12367	Fishery Biologist II	FT	A	SS	Anchorage	200	16 C / D	12.0		61,234	0	415	40,364	102,013	102,013
11-1072		12371	Fish & Game Program Tech	FT	A	GP	Dillingham	99	12 N	12.0		75,168	3,043	0	44,747	122,958	122,958
11-1073		12372	Fish & Game Program Tech	FT	A	GP	Homer	200	12 K	12.0		49,848	2,018	0	35,902	87,768	87,768
11-1075		12373	Fishery Biologist III	FT	A	SS	Anchorage	200	18 K / L	12.0		80,991	0	30	47,131	128,152	128,152
11-1088		12376	Analyst/Programmer IV	FT	A	GP	Anchorage	200	20 K	1.0	*	7,188	291	0	4,052	11,531	10,609
11-1100		12382	Fishery Biologist IV	FT	A	SS	Anchorage	200	20 K / L	12.0		95,124	0	0	52,057	147,181	147,181
11-1102		12384	Vessel Technician	PT	A	GP	Homer	200	16 G	11.0		56,298	2,953	16,653	42,431	118,335	118,335
11-1103		12385	Boat Officer III	FT	A	SS	Homer	99	17 M	12.0		80,352	0	19,000	53,534	152,886	152,886
11-1109		12390	Boat Officer III	FT	A	SS	Cordova	99	17 L	12.0		81,425	0	18,363	53,686	153,474	145,800
11-1113		12394	Vessel Technician	PT	A	GP	Cordova	211	16 F / G	10.5		59,651	3,022	15,000	42,255	119,928	113,932
11-1119		12400	F&W Technician II	PT	A	GP	King Salmon	250	9 B	1.5		6,164	403	3,793	5,789	16,149	16,149
11-1177		29976	F&W Technician III	PT	P	GP	Soldotna	99	11 P	5.0		22,780	1,161	5,892	17,719	47,552	47,552
11-1178		28467	F&W Technician III	PT	A	GP	Soldotna	200	11 D	2.6		8,512	406	1,511	7,507	17,936	15,066
11-1179		30378	F&W Technician II	PT	A	GP	Soldotna	200	9 A	1.6		4,250	172	0	3,950	8,372	8,372
11-1180		30379	F&W Technician II	PT	A	GP	Soldotna	200	9 B	1.6		4,382	177	0	3,996	8,555	8,555
11-1181		28472	F&W Technician II	PT	A	GP	Soldotna	200	9 B	1.6		4,382	177	0	3,996	8,555	3,422

Note: If a position is split, an asterisk (*) will appear in the Split/Count column. If the split position is also counted in the component, two asterisks (**) will appear in this column. [No valid job title] appearing in the Job Class Title indicates that the PCN has an invalid class code or invalid range for the class code effective date of this scenario.

Personal Services Expenditure Detail (1445)

Department of Fish and Game

Scenario: FY2020 Governor Amended (15636)
Component: Central Region Fisheries Management (2168)
RDU: Commercial Fisheries (143)

Status	PCN	Tracking ID	Job Class Title	Time Status	Retire Code	Barg Unit	Location	Salary Sched	Range / Steps	Comp Months	Split / Count	Annual Salaries	COLA	Premium Pay	Annual Benefits	Total Costs	UGF Amount
11-1182	28471	F&W Technician II	PT	A	GP	Soldotna	200	9 C	1.6	4,510	183	0	4,041	8,734	8,734		
11-1183	28474	F&W Technician II	PT	A	GP	Soldotna	200	9 C	4.2	11,840	479	0	10,607	22,926	22,926		
11-1184	28475	F&W Technician II	PT	A	GP	Soldotna	200	9 B	2.5	6,848	277	0	6,244	13,369			
11-1210	12448	Fishery Biologist III	FT	A	SS	Cordova	211	18 F	12.0	84,000	0	0	48,171	132,171	132,171		
11-1211	12449	Fish and Game Coordinator	FT	A	SS	Anchorage	99	22 L	12.0	102,405	0	0	54,600	157,005	157,005		
11-1231	12461	Fishery Biologist III	FT	A	SS	Homer	99	18 O	12.0	90,985	0	2,500	51,485	144,970	136,417		
11-1255	12468	Fishery Biologist III	FT	A	SS	Soldotna	200	18 L	12.0	83,280	0	0	47,920	131,200	131,200		
11-1258	12470	Fishery Biologist III	FT	A	SS	Homer	200	18 J	12.0	78,120	0	6,500	48,388	133,008	133,008		
11-1261	12473	Fishery Biologist III	FT	A	SS	Anchorage	200	18 O / P	12.0	91,792	0	6,480	53,157	151,429	151,429		
11-1270	12479	Fishery Biologist II	FT	A	SS	Soldotna	99	16 O	12.0	80,076	0	1,800	47,430	129,306	129,306		
11-1278	12486	Fishery Biologist I	PT	A	SS	Soldotna	600	14 B	5.5	22,660	0	3,032	17,605	43,297	43,297		
11-1279	12487	Publications Spec II	FT	A	GP	Anchorage	200	16 L / M	6.0	34,832	1,552	7,000	23,857	67,241	67,241		
11-1281	12489	Fish and Game Coordinator	FT	P	SS	Soldotna	200	22 L / M	12.0	110,701	0	0	57,498	168,199	168,199		
11-1295	29048	F&W Technician II	PT	A	GP	Cordova	211	9 B / C	5.2	15,826	720	1,964	14,227	32,737	9,494		
11-1305	12507	Office Assistant I	PT	A	GP	Cordova	211	8 E	5.0	15,645	680	1,155	13,573	31,053			
11-1318	12517	F&W Technician II	PT	A	GP	Soldotna	200	9 B	1.5	4,109	166	0	3,747	8,022	8,022		
11-1323	12519	Fish & Game Program Tech	FT	A	GP	Soldotna	200	12 L / M	12.0	51,816	2,097	0	36,590	90,503	90,503		
11-1330	12523	F&W Technician II	PT	A	GP	Soldotna	200	9 B / C	1.5	4,189	200	758	4,039	9,186	9,186		
11-1331	12524	Boat Officer I	PT	A	GP	Cordova	211	13 B / C	6.0	23,504	1,761	20,000	24,441	69,706	60,993		
11-1333	12526	Fishery Biologist II	FT	A	SS	Soldotna	99	16 N / O	12.0	77,207	0	0	45,799	123,006	123,006		
11-1335	12527	F&W Technician II	PT	A	GP	Soldotna	200	9 A	1.5	3,984	181	490	3,874	8,529	8,529		
11-1336	12528	F&W Technician II	PT	A	GP	Soldotna	200	9 B	3.0	8,217	345	303	7,599	16,464	16,464		
11-1337	12529	Fishery Biologist II	FT	A	SS	Cordova	211	16 C / D	12.0	66,100	0	0	41,919	108,019	108,019		
11-1341	29051	F&W Technician II	PT	A	GP	King Salmon	250	9 G	1.7	8,102	328	0	5,449	13,879	13,879		
11-1346	12536	Fishery Biologist I	PT	A	GP	Cordova	211	14 B	4.0	16,580	1,394	17,869	18,196	54,039	54,039		
11-1363	12550	F&W Technician II	PT	A	GP	Soldotna	200	9 B	1.5	4,109	627	11,380	7,722	23,838	11,919		
11-1368	29056	F&W Technician II	PT	A	GP	Soldotna	200	9 B	0.5	1,370	107	1,264	1,690	4,431	4,431		
11-1369	12555	F&W Technician II	PT	A	GP	King Salmon	250	9 B	1.2	4,931	239	978	3,913	10,061	10,061		
11-1371	29057	F&W Technician II	PT	A	GP	Dillingham	237	9 B	1.5	5,628	228	0	4,277	10,133	10,133		

Note: If a position is split, an asterisk (*) will appear in the Split/Count column. If the split position is also counted in the component, two asterisks (**) will appear in this column.
 [No valid job title] appearing in the Job Class Title indicates that the PCN has an invalid class code or invalid range for the class code effective date of this scenario.

Personal Services Expenditure Detail (1445)

Department of Fish and Game

Scenario: FY2020 Governor Amended (15636)
Component: Central Region Fisheries Management (2168)
RDU: Commercial Fisheries (143)

Status	PCN	Tracking ID	Job Class Title	Time Status	Retire Code	Barg Unit	Location	Salary Sched	Range / Steps	Comp Months	Split / Count	Annual Salaries	COLA	Premium Pay	Annual Benefits	Total Costs	UGF Amount
11-1372	12558	F&W Technician II	PT	A	GP	Soldotna	200	9 B	1.5			4,109	166	0	3,747	8,022	8,022
11-1374	29058	F&W Technician II	PT	A	GP	Soldotna	200	9 B / C	3.5			9,627	774	9,483	12,068	31,952	31,952
11-1378	12562	Fishery Biologist I	PT	A	GP	Dillingham	237	14 F	3.0			17,685	760	1,088	11,180	30,713	
11-1381	12563	Fishery Biologist I	PT	A	GP	Soldotna	99	14 L	7.4			36,497	1,523	1,139	24,549	63,708	46,507
11-1384	12564	F&W Technician II	PT	A	GP	Cordova	211	9 B / C	4.2			12,786	584	1,635	11,509	26,514	19,886
11-1385	12565	F&W Technician III	PT	A	GP	King Salmon	250	11 F	1.0			5,232	349	3,381	4,549	13,511	
11-1388	12567	F&W Technician IV	PT	A	GP	King Salmon	250	13 F	4.0			24,024	1,107	3,326	15,717	44,174	44,174
11-1389	12568	F&W Technician II	PT	A	GP	King Salmon	250	9 B	3.4			13,971	612	1,138	10,517	26,238	
11-1392	12571	F&W Technician II	PT	A	GP	Dillingham	237	9 A	1.5			5,459	221	0	4,218	9,898	9,898
11-1395	12574	Analyst/Programmer IV	FT	A	GP	Anchorage	200	20 C / D	12.0			70,958	2,872	0	43,276	117,106	117,106
11-1396	12575	F&W Technician II	PT	A	GP	King Salmon	250	9 B	1.3			5,342	247	758	4,134	10,481	10,481
11-1413	12586	Fishery Biologist I	PT	A	GP	Cordova	211	14 E / F	4.2			20,059	889	1,898	14,141	36,987	27,740
11-1418	12591	Fishery Biologist I	PT	A	GP	Soldotna	200	14 B	2.5			9,335	692	7,755	9,822	27,604	27,604
11-1420	12593	F&W Technician II	PT	A	GP	Cordova	211	9 G	4.2			14,809	599	0	11,644	27,052	
11-1422	12595	Office Assistant I	PT	A	GP	Cordova	211	8 C	5.0			14,740	626	734	13,109	29,209	23,367
11-1455	12615	Maint Gen Journey	FT	A	LL	Dillingham	211	54 M	12.0			71,268	0	0	43,280	114,548	114,548
11-1465	12619	Office Assistant II	PT	A	GP	Homer	200	10 C	1.0		**	3,001	121	0	2,589	5,711	5,711
11-1482	12629	F&W Technician II	PT	A	GP	Dillingham	237	9 C	3.0			11,586	491	534	8,856	21,467	7,299
11-1484	12631	F&W Technician II	PT	A	GP	King Salmon	250	9 B	1.3			5,342	294	1,921	4,540	12,097	
11-1485	12632	F&W Technician II	PT	A	GP	Dillingham	237	9 B	3.1			11,631	567	2,385	9,672	24,255	
11-1495	29067	F&W Technician II	PT	A	GP	Soldotna	200	9 B	3.5			9,587	424	885	9,051	19,947	19,947
11-1496	12643	F&W Technician II	PT	A	GP	Cordova	211	9 B / C	5.3			16,139	693	982	14,147	31,961	
11-1497	12644	F&W Technician II	PT	A	GP	Dillingham	237	9 A / B	2.5			9,154	371	0	7,050	16,575	16,575
11-1498	12645	F&W Technician II	PT	A	GP	King Salmon	250	9 B	1.3			5,342	271	1,362	4,345	11,320	11,320
11-1500	12646	F&W Technician II	PT	A	GP	King Salmon	250	9 B	1.3			5,342	262	1,138	4,267	11,009	
11-1503	12648	F&W Technician II	PT	A	GP	Cordova	211	9 E	4.2			13,990	613	1,146	11,759	27,508	20,631
11-1505	29068	F&W Technician II	PT	A	GP	Soldotna	200	9 B / C	1.0			2,819	125	260	2,616	5,820	5,820
11-1507	12651	F&W Technician II	PT	A	GP	King Salmon	250	9 B	1.3			5,342	290	1,820	4,505	11,957	11,957
11-1514	12657	F&W Technician II	PT	A	GP	Soldotna	200	9 B	1.5			4,109	182	379	3,879	8,549	8,549

Note: If a position is split, an asterisk (*) will appear in the Split/Count column. If the split position is also counted in the component, two asterisks (**) will appear in this column.
 [No valid job title] appearing in the Job Class Title indicates that the PCN has an invalid class code or invalid range for the class code effective date of this scenario.

Personal Services Expenditure Detail (1445)

Department of Fish and Game

Scenario: FY2020 Governor Amended (15636)

Component: Central Region Fisheries Management (2168)

RDU: Commercial Fisheries (143)

Status	PCN	Tracking ID	Job Class Title	Time Status	Retire Code	Barg Unit	Location	Salary Sched	Range / Steps	Comp Months	Split / Count	Annual Salaries	COLA	Premium Pay	Annual Benefits	Total Costs	UGF Amount
11-1515	12658	F&W Technician III	PT	A	GP	Cordova	211	11 A	1.5	4,997	408	5,075	5,829	16,309	10,112		
11-1516	12659	F&W Technician II	PT	A	GP	Homer	200	9 J	2.5	8,278	471	3,362	7,918	20,029	20,029		
11-1517	12660	F&W Technician III	PT	A	GP	Soldotna	200	11 G	6.0	21,666	944	1,666	17,395	41,671	20,836		
11-1519	12662	F&W Technician II	PT	A	GP	Dillingham	237	9 B	1.5	5,628	332	2,586	5,180	13,726	13,726		
11-1522	12665	F&W Technician II	PT	A	GP	Dillingham	237	9 E	3.7	15,211	662	1,138	11,412	28,423	16,770		
11-1527	12669	F&W Technician II	PT	A	GP	Cordova	211	9 B / C	6.7	20,519	944	2,806	18,471	42,740	23,934		
11-1532	12674	F&W Technician II	PT	A	GP	Cordova	211	9 C	2.0	6,258	258	115	5,308	11,939			
11-1534	12676	F&W Technician II	PT	A	GP	King Salmon	250	9 D	1.5	6,533	264	0	4,593	11,390			
11-1535	12677	F&W Technician II	PT	A	GP	Soldotna	200	9 B	4.0	10,956	443	0	9,990	21,389	21,389		
11-1536	12678	F&W Technician II	PT	A	GP	Dillingham	237	9 B	1.5	5,628	263	865	4,579	11,335	11,335		
11-1537	12679	F&W Technician II	PT	A	GP	Soldotna	200	9 B	1.5	4,109	195	708	3,994	9,006	9,006		
11-1540	12682	Fishery Biologist II	FT	A	SS	Anchorage	200	16 L	12.0	72,756	0	102	44,280	117,138	117,138		
11-1543	12685	F&W Technician II	PT	A	GP	King Salmon	250	9 B	2.3	9,451	383	0	6,845	16,679			
11-1545	12687	F&W Technician III	PT	A	GP	King Salmon	250	11 K	3.5	20,388	825	0	12,515	33,728	33,728		
11-1548	12689	F&W Technician II	PT	A	GP	King Salmon	250	9 B	1.5	6,164	259	227	4,544	11,194			
11-1549	12690	F&W Technician II	PT	A	GP	Dillingham	237	9 B	4.0	15,008	643	865	11,708	28,224	14,112		
11-1550	12691	F&W Technician II	PT	A	GP	King Salmon	250	9 B	1.3	5,342	287	1,742	4,478	11,849	11,849		
11-1552	12693	F&W Technician II	PT	A	GP	Soldotna	200	9 A	0.5	1,328	54	0	1,234	2,616	2,616		
11-1553	12694	F&W Technician II	PT	A	GP	King Salmon	250	9 D	2.0	8,710	377	603	6,335	16,025	16,025		
11-1554	12695	F&W Technician II	PT	A	GP	King Salmon	250	9 B	1.5	6,164	280	758	4,729	11,931			
11-1555	12696	F&W Technician II	PT	A	GP	Cordova	211	9 F	4.2	14,381	720	3,406	12,685	31,192			
11-1557	12698	F&W Technician II	PT	A	GP	Dillingham	237	9 B	1.3	4,878	215	0	3,707	8,800	4,400		
11-1559	12699	F&W Technician II	PT	A	GP	Dillingham	237	9 B	1.5	5,628	309	1,996	4,974	12,907	12,907		
11-1561	12701	F&W Technician II	PT	A	GP	King Salmon	250	9 D	2.3	10,017	446	1,005	7,394	18,862	15,844		
11-1562	12702	F&W Technician II	PT	A	GP	Dillingham	237	9 B	1.3	4,878	248	1,246	4,142	10,514	7,044		
11-1563	12703	F&W Technician II	PT	A	GP	King Salmon	250	9 C	1.5	6,344	274	429	4,677	11,724			
11-1567	12707	F&W Technician II	PT	A	GP	Dillingham	237	9 B	3.0	11,256	506	1,246	8,990	21,998	7,479		
11-1568	12708	F&W Technician II	PT	A	GP	Dillingham	237	9 B	1.5	5,628	256	692	4,519	11,095	11,095		
11-1570	12710	F&W Technician II	PT	A	GP	Dillingham	237	9 B	1.5	5,628	307	1,958	4,961	12,854	12,854		

Note: If a position is split, an asterisk (*) will appear in the Split/Count column. If the split position is also counted in the component, two asterisks (**) will appear in this column. [No valid job title] appearing in the Job Class Title indicates that the PCN has an invalid class code or invalid range for the class code effective date of this scenario.

Personal Services Expenditure Detail (1445)

Department of Fish and Game

Scenario: FY2020 Governor Amended (15636)
Component: Central Region Fisheries Management (2168)
RDU: Commercial Fisheries (143)

Status	PCN	Tracking ID	Job Class Title	Time Status	Retire Code	Barg Unit	Location	Salary Sched	Range / Steps	Comp Months	Split / Count	Annual Salaries	COLA	Premium Pay	Annual Benefits	Total Costs	UGF Amount
11-1573	12713	F&W Technician II	PT	A	GP	Soldotna	200	9 E	1.5			4,502	182	0	3,884	8,568	8,568
11-1574	12714	F&W Technician II	PT	A	GP	King Salmon	250	9 C	1.3			5,498	313	2,224	4,700	12,735	
11-1575	12715	F&W Technician II	PT	A	GP	King Salmon	250	9 B	1.3			5,342	237	518	4,050	10,147	10,147
11-1576	12716	F&W Technician II	PT	A	GP	King Salmon	250	9 B	1.3			5,342	248	783	4,143	10,516	10,516
11-1577	12717	F&W Technician II	PT	A	GP	King Salmon	250	9 B	1.5			6,164	265	379	4,597	11,405	
11-1588	12726	Research Analyst I	FT	A	GP	Homer	99	13 M	11.4	**		54,207	2,268	1,900	37,164	95,539	
11-1590	12728	F&W Technician III	PT	A	GP	Homer	99	11 P	6.3			28,703	1,503	8,417	22,673	61,296	52,715
11-1606	12741	F&W Technician II	PT	A	GP	Cordova	211	9 B / C	3.0			9,387	401	520	8,083	18,391	18,391
11-1609	12743	F&W Technician II	PT	A	GP	King Salmon	250	9 B	1.0			4,109	205	948	3,307	8,569	
11-1612	12746	F&W Technician II	PT	A	GP	Cordova	99	9 L / M	9.9			37,798	1,637	2,641	29,380	71,456	50,019
11-1615	12749	F&W Technician III	FT	A	GP	Homer	200	11 L	12.0			48,108	2,279	8,200	38,159	96,746	
11-1640	12769	F&W Technician II	PT	A	GP	King Salmon	250	9 B	1.3			5,342	224	189	3,935	9,690	9,690
11-1642	12771	F&W Technician III	PT	A	GP	Soldotna	200	11 B	4.5			13,883	595	825	12,071	27,374	8,212
11-1643	12772	F&W Technician II	PT	A	GP	King Salmon	250	9 B	1.3			5,342	326	2,715	4,817	13,200	13,200
11-1645	12773	F&W Technician II	PT	A	GP	Dillingham	237	9 C	1.3			5,021	275	1,782	4,379	11,457	
11-1648	12775	F&W Technician II	PT	A	GP	Cordova	211	9 D	1.3			4,189	170	0	3,466	7,825	
11-1649	12776	F&W Technician III	PT	A	GP	Seward	200	11 C	4.0			12,708	764	6,173	12,759	32,404	32,404
11-1653	12779	F&W Technician II	PT	A	GP	King Salmon	250	9 B	1.3			5,342	303	2,136	4,615	12,396	12,396
11-1658	12782	F&W Technician II	PT	A	GP	Cordova	211	9 B	2.0			6,080	251	112	5,245	11,688	11,688
11-1660	12784	F&W Technician III	PT	A	GP	King Salmon	250	11 B	1.3			6,016	261	427	4,254	10,958	
11-1669	12788	F&W Technician III	PT	A	GP	Soldotna	200	11 C	4.0			12,708	989	11,730	14,700	40,127	40,127
11-1674	12791	F&W Technician II	PT	A	GP	King Salmon	250	9 B	2.4			9,862	445	1,138	7,540	18,985	9,493
11-1675	12792	F&W Technician II	PT	A	GP	Dillingham	237	9 B	1.5			5,628	301	1,808	4,909	12,646	12,646
11-1676	12793	Fish & Game Program Tech	FT	A	GP	Anchorage	200	12 C / D	6.0	**		20,850	844	0	16,528	38,222	38,222
11-1771	12847	F&W Technician II	PT	A	GP	King Salmon	250	9 B	1.3			5,342	235	462	4,030	10,069	10,069
11-1782	12854	Fishery Biologist II	FT	A	SS	Homer	99	16 L	12.0			72,756	0	3,800	45,571	122,127	20,762
11-1839	12877	Administrative Officer II	FT	A	SS	Anchorage	99	19 P	6.0	**		50,586	0	0	27,085	77,671	77,671
11-1879	12904	F&W Technician II	PT	A	GP	King Salmon	250	9 C	1.3			5,498	233	251	4,011	9,993	9,993
11-1909	12928	Fishery Biologist I	PT	A	GP	Cordova	211	14 B / C	11.8			50,353	2,154	2,869	36,773	92,149	69,112

Note: If a position is split, an asterisk (*) will appear in the Split/Count column. If the split position is also counted in the component, two asterisks (**) will appear in this column.
 [No valid job title] appearing in the Job Class Title indicates that the PCN has an invalid class code or invalid range for the class code effective date of this scenario.

Personal Services Expenditure Detail (1445)

Department of Fish and Game

Scenario: FY2020 Governor Amended (15636)

Component: Central Region Fisheries Management (2168)

RDU: Commercial Fisheries (143)

Status	PCN	Tracking ID	Job Class Title	Time Status	Retire Code	Barg Unit	Location	Salary Sched	Range / Steps	Comp Months	Split / Count	Annual Salaries	COLA	Premium Pay	Annual Benefits	Total Costs	UGF Amount
11-1970		12982	Fishery Biologist I	PT	A	GP	Cordova	211	14 F / G	9.0		43,138	1,847	2,500	29,809	77,294	65,700
11-1977		12987	F&W Technician II	PT	A	GP	Cordova	211	9 B	1.3		3,952	160	0	3,384	7,496	
11-2118		13073	Fish & Game Program Tech	FT	N	GP	King Salmon	250	12 C	4.8	*	24,770	839	0	10,599	36,208	36,208
11-4154		13365	F&W Technician III	PT	A	GP	Homer	200	11 B	2.0	*	6,206	295	0	5,249	11,750	9,400
11-4263		13458	Fishery Biologist I	PT	A	GP	Anchorage	99	14 O	1.0	*	5,428	237	1,253	3,875	10,793	10,793
11-5038		13571	Fishery Biologist III	FT	A	SS	Anchorage	200	18 J	1.6	*	10,416	0	0	6,149	16,565	
11-5045		13576	Office Assistant II	FT	A	GP	Anchorage	200	10 B / C	12.0		35,228	1,426	0	30,795	67,449	67,449
11-5062		13585	Fishery Biologist III	FT	A	SS	Cordova	211	18 E / F	12.0		81,033	0	0	47,135	128,168	
11-5187		13644	Fishery Biologist II	PT	A	GP	Homer	99	16 N / O	12.0		72,992	3,220	6,559	46,277	129,048	98,076
11-5189		13646	Accounting Tech I	FT	A	GP	Anchorage	200	12 E / F	12.0		43,455	1,759	0	33,669	78,883	78,883
11-5243		13670	Fishery Biologist II	FT	A	GP	Homer	200	16 K / L	12.0		67,021	2,713	0	41,901	111,635	111,635
11-5251		13676	Fishery Biologist I	PT	A	GP	King Salmon	250	14 B	4.0		22,404	1,221	7,755	16,698	48,078	
11-5274		13690	F&W Technician II	PT	A	GP	Soldotna	200	9 C	0.5		1,410	138	2,000	1,962	5,510	5,510
11-5296		13705	F&W Technician III	PT	A	GP	Soldotna	200	11 A	4.0		12,004	536	1,246	10,792	24,578	
11-5300		13709	F&W Technician III	PT	A	GP	Soldotna	200	11 A	3.0		9,003	364	0	7,767	17,134	17,134
11-5319		13721	F&W Technician II	PT	A	GP	Cordova	211	9 B	1.3		3,952	177	420	3,530	8,079	
11-5333		13729	F&W Technician III	PT	A	GP	Cordova	99	11 M	7.0		32,158	1,388	2,121	22,760	58,427	33,888
11-5340		13733	F&W Technician II	PT	A	GP	Soldotna	200	9 B	1.5		4,109	166	0	3,747	8,022	8,022
11-5356		13743	F&W Technician III	PT	A	GP	Valdez	211	11 J	7.0		29,225	1,238	1,348	21,465	53,276	30,367
11-5362		13747	F&W Technician II	PT	A	GP	Soldotna	200	9 B	1.0		2,739	243	3,267	3,639	9,888	3,955
11-7018		13821	Fishery Biologist I	PT	A	GP	Anchorage	200	14 C	5.5	*	21,446	952	4,142	17,413	43,953	34,723
11-7020		13823	Gis Analyst II	PT	A	GP	Homer	200	17 F / G	10.0		54,330	2,509	7,641	37,055	101,535	74,121
TI 11-7045		13838	Analyst/Programmer II	FT	A	GP	Anchorage	200	16 C	12.0		53,292	2,157	0	37,105	92,554	92,554
11-7066		13843	F&W Technician II	PT	A	GP	Cordova	211	9 B	1.3		3,952	160	0	3,384	7,496	
11-7112		13858	Fishery Biologist III	FT	A	GP	Anchorage	200	18 L	1.0	*	6,493	263	0	3,809	10,565	10,565
11-7601		29122	F&W Technician III	PT	A	GP	Homer	200	11 J	8.7		32,721	1,587	6,496	27,104	67,908	45,498

Note: If a position is split, an asterisk (*) will appear in the Split/Count column. If the split position is also counted in the component, two asterisks (**) will appear in this column. [No valid job title] appearing in the Job Class Title indicates that the PCN has an invalid class code or invalid range for the class code effective date of this scenario.

Personal Services Expenditure Detail (1445)

Department of Fish and Game

Scenario: FY2020 Governor Amended (15636)
Component: Central Region Fisheries Management (2168)
RDU: Commercial Fisheries (143)

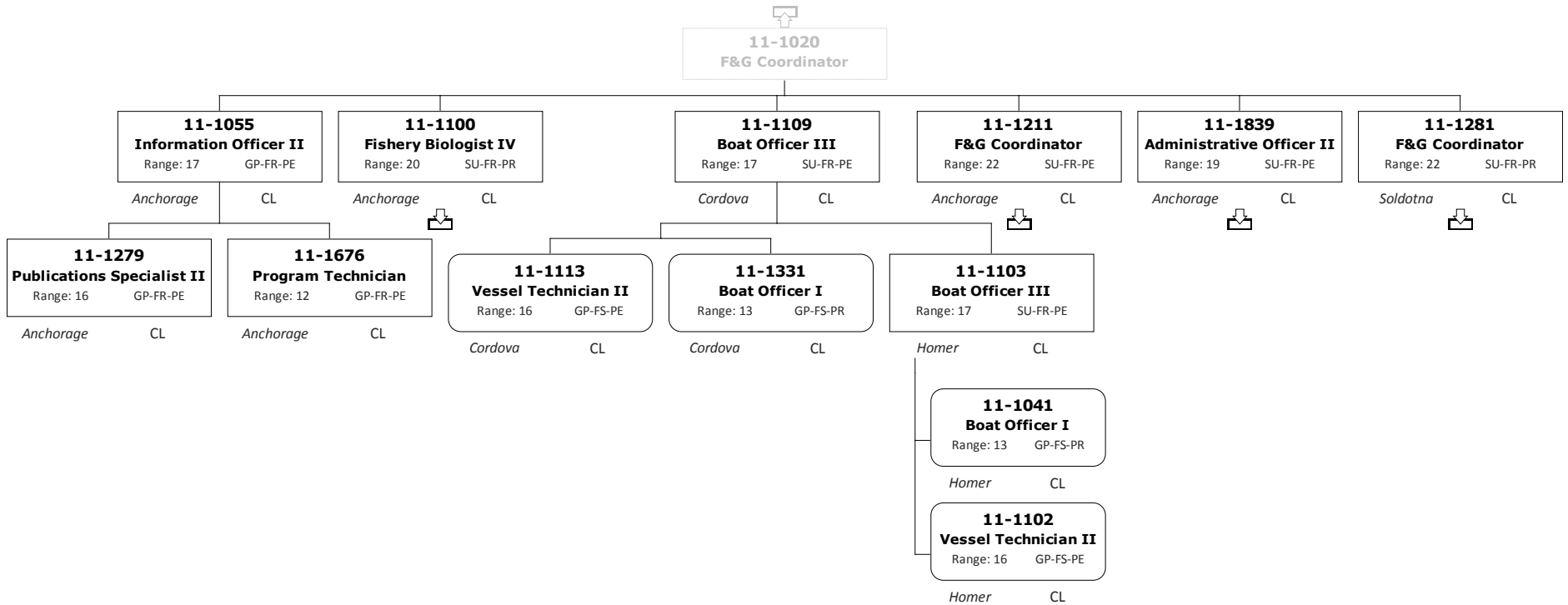
Status	PCN	Tracking ID	Job Class Title	Time Status	Retire Code	Barg Unit	Location	Salary Sched	Range / Steps	Comp Months	Split / Count	Annual Salaries	COLA	Premium Pay	Annual Benefits	Total Costs	UGF Amount	
	11-7613	13863	F&W Technician II	PT	A	GP	King Salmon	250	9 B	1.3		5,342	255	948	4,200	10,745	10,745	
													Total Salary Costs:	4,765,612				
													Total COLA:	102,297				
													Total Premium Pay:	392,152				
													Total Benefits:	3,180,853				
													Total Pre-Vacancy:	8,440,914				
													Minus Vacancy Adjustment of 1.04%:	(87,414)				
													Total Post-Vacancy:	8,353,500				
													Plus Lump Sum Premium Pay:	0				
													Personal Services Line 100:	8,353,500				
				Total Component Months:	892.3													
				Total Positions:		New	Deleted											
				Full Time Positions:	44	0	0											
				Part Time Positions:	121	0	0											
				Non Permanent Positions:	0	0	0											
				Positions in Component:	165	0	0											

PCN Funding Sources:		Pre-Vacancy	Post-Vacancy	Percent
1002	Federal Receipts	70,806	70,073	0.84%
1003	General Fund Match	82,642	81,786	0.98%
1004	General Fund Receipts	6,711,265	6,641,764	79.51%
1005	General Fund/Program Receipts	217,269	215,019	2.57%
1061	Capital Improvement Project Receipts	43,690	43,237	0.52%
1108	Statutory Designated Program Receipts	801,769	793,466	9.50%
1109	Test Fisheries Receipts	127,259	125,941	1.51%
1201	Commercial Fisheries Entry Commission Receipts	386,214	382,214	4.58%
Total PCN Funding:		8,440,914	8,353,500	100.00%

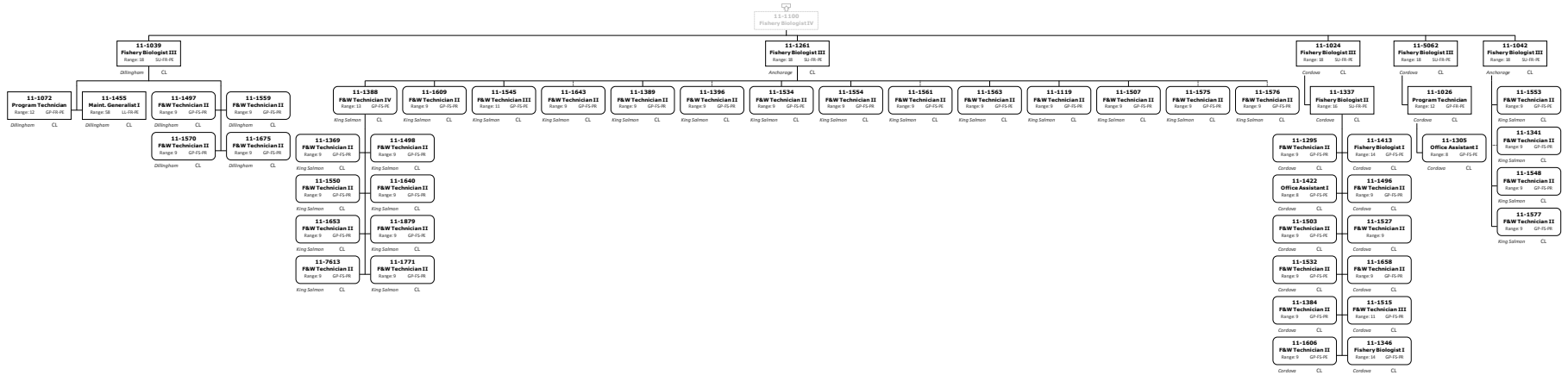
Note: If a position is split, an asterisk (*) will appear in the Split/Count column. If the split position is also counted in the component, two asterisks (**) will appear in this column. [No valid job title] appearing in the Job Class Title indicates that the PCN has an invalid class code or invalid range for the class code effective date of this scenario.

Division of Commercial Fisheries

2168 - Central Region Fish Management



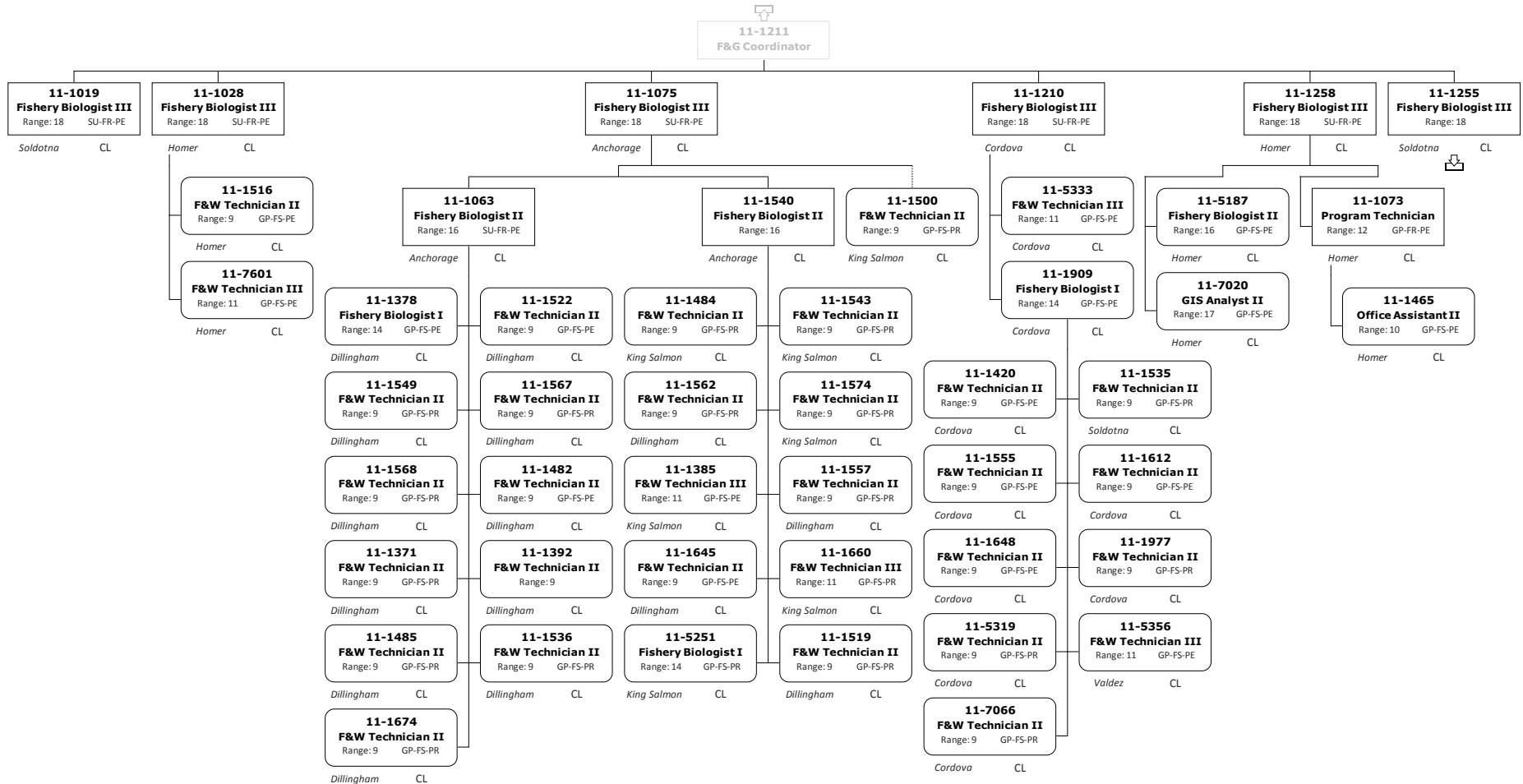
Division of Commercial Fisheries 2168 - Central Region Fish Management



Permanent Full-time
 Permanent Part-Time & Seasonal

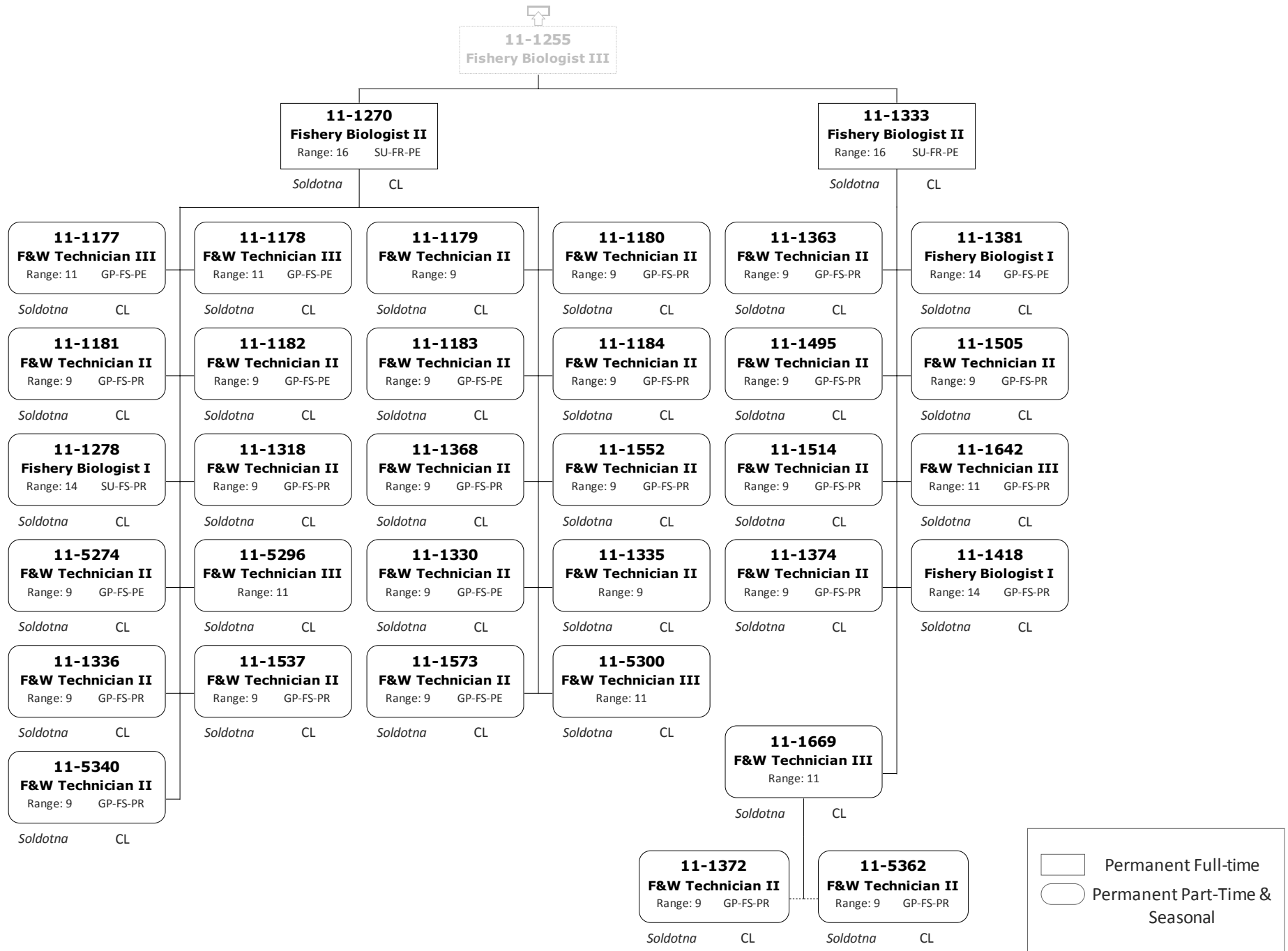
Division of Commercial Fisheries

2168 - Central Region Fish Management

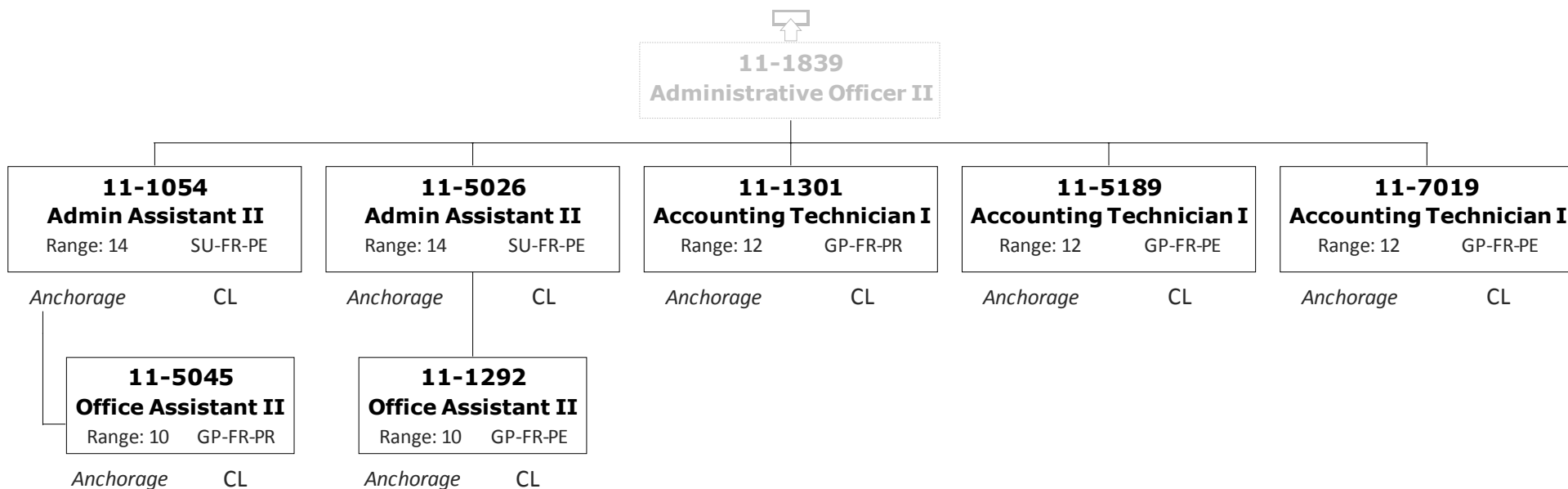


Division of Commercial Fisheries

2168 - Central Region Fish Management



Division of Commercial Fisheries
 2168 - Central Region Fish Management



Division of Commercial Fisheries
2168 - Central Region Fish Management

