

Component Detail (1077)
Department of Fish and Game

Component: AYK Region Fisheries Management (2169)

Non-Formula Component

IRIS AP Type: FCF3

RDU: Commercial Fisheries (143)

	FY2018 Actuals (15158)	FY2019 Conference Committee (14954)	FY2019 Authorized (14962)	FY2019 Management Plan (14994)	FY2020 Governor (15610)	FY2020 Governor Amended (15636)	FY2020 Governor vs FY2020 Governor Amended	
1000 Personal Services	6,804.4	7,437.2	7,437.2	7,037.2	7,052.3	6,454.0	-598.3	-8.5%
2000 Travel	293.8	284.4	284.4	284.4	284.4	137.6	-146.8	-51.6%
3000 Services	1,016.4	1,547.7	1,547.7	1,947.7	1,947.7	1,947.7	0.0	0.0%
4000 Commodities	520.8	778.2	778.2	778.2	778.2	778.2	0.0	0.0%
5000 Capital Outlay	381.7	96.3	96.3	96.3	96.3	96.3	0.0	0.0%
7000 Grants, Benefits	0.0	0.0	0.0	0.0	0.0	0.0	0.0	0.0%
8000 Miscellaneous	0.0	0.0	0.0	0.0	0.0	0.0	0.0	0.0%
Totals	9,017.1	10,143.8	10,143.8	10,143.8	10,158.9	9,413.8	-745.1	-7.3%
<u>Funding Sources:</u>								
1002 Fed Rcpts (Fed)	1,138.8	1,305.1	1,305.1	1,305.1	1,331.0	1,281.6	-49.4	-3.7%
1004 Gen Fund (UGF)	6,553.1	6,844.3	6,844.3	6,844.3	7,280.4	6,637.5	-642.9	-8.8%
1005 GF/Prgm (DGF)	286.5	289.8	289.8	289.8	296.1	289.0	-7.1	-2.4%
1007 I/A Rcpts (Other)	91.8	110.8	110.8	110.8	110.8	84.4	-26.4	-23.8%
1061 CIP Rcpts (Other)	77.4	326.3	326.3	326.3	328.1	326.3	-1.8	-0.5%
1108 Stat Desig (Other)	333.0	224.2	224.2	224.2	224.9	219.8	-5.1	-2.3%
1109 Test Fish (DGF)	0.0	41.8	41.8	41.8	42.3	41.8	-0.5	-1.2%
1201 CFEC Rcpts (DGF)	536.5	536.5	536.5	536.5	542.5	533.4	-9.1	-1.7%
1223 CharterRLF (DGF)	0.0	465.0	465.0	465.0	2.8	0.0	-2.8	-100.0%
<u>Funding Totals:</u>								
Unrestricted General (UGF)	6,553.1	6,844.3	6,844.3	6,844.3	7,280.4	6,637.5	-642.9	-8.8%
Designated General (DGF)	823.0	1,333.1	1,333.1	1,333.1	883.7	864.2	-19.5	-2.2%
Other	502.2	661.3	661.3	661.3	663.8	630.5	-33.3	-5.0%
Federal	1,138.8	1,305.1	1,305.1	1,305.1	1,331.0	1,281.6	-49.4	-3.7%
<u>Positions:</u>								
Permanent Full Time	35	35	35	36	36	36	0	0.0%
Permanent Part Time	82	77	77	74	74	74	0	0.0%
Non Permanent	0	0	0	0	0	0	0	0.0%

Change Record Detail - Multiple Scenarios with Descriptions (294)
Department of Fish and Game

Component: AYK Region Fisheries Management (2169)
RDU: Commercial Fisheries (143)

Scenario/Change Record Title	Trans Type	Totals	Personal Services	Travel	Services	Commodities	Capital Outlay	Grants, Benefits	Miscellaneous	PFT	Positions PPT	NP
***** Changes From FY2019 Conference Committee To FY2019 Authorized *****												
FY2019 Conference Committee												
ConfCom		10,143.8	7,437.2	284.4	1,547.7	778.2	96.3	0.0	0.0	35	77	0
1002 Fed Rcpts		1,305.1										
1004 Gen Fund		6,844.3										
1005 GF/Prgm		289.8										
1007 I/A Rcpts		110.8										
1061 CIP Rcpts		326.3										
1108 Stat Desig		224.2										
1109 Test Fish		41.8										
1201 CFEC Rcpts		536.5										
1223 CharterRLF		465.0										
Subtotal		10,143.8	7,437.2	284.4	1,547.7	778.2	96.3	0.0	0.0	35	77	0
***** Changes From FY2019 Authorized To FY2019 Management Plan *****												
Transfer Three Positions to State Subsistence Research for Harvest Survey Project												
Trout		0.0	0.0	0.0	0.0	0.0	0.0	0.0	0.0	0	-3	0
Transfer three positions to the State Subsistence Research component to properly align with the transfer of the Kuskokwim Area Salmon Post Season Subsistence Harvest Survey project.												
(11-5176) Part-Time, Fish and Wildlife Technician II, range 9, located in Bethel												
(11-5229) Part-Time, Fish and Wildlife Technician II, range 9, located in Bethel												
(11-1155), Part-Time, Fishery Biologist I, range 14, located in Anchorage												
Transfer Fish and Wildlife Technician II (11-5193) from Westward Region Fisheries Management												
Trin		0.0	0.0	0.0	0.0	0.0	0.0	0.0	0.0	0	1	0
Transfer PCN 11-5193, Part Time Fish and Wildlife Technician II, range 9, located in Kodiak from the Westward Region Fisheries Management component. This transfer is necessary to provide adequate harvest report data for AYK projects.												
Align Authority to Comply with Vacancy Factor Guidelines												
LIT		0.0	-400.0	0.0	400.0	0.0	0.0	0.0	0.0	0	0	0
A line item transfer from personal services to contractual is required to meet the vacancy factor guidelines.												
Change Research Analyst II (11-1174) from Part-Time to Full-Time												
PosAdj		0.0	0.0	0.0	0.0	0.0	0.0	0.0	0.0	1	-1	0
Change (11-1174) Research Analyst II, range 16, located in Anchorage, from Part-Time to Full-Time. This change is necessary due to the changing technology, the changing stock identification procedures, and volume of data being collected.												
Subtotal		10,143.8	7,037.2	284.4	1,947.7	778.2	96.3	0.0	0.0	36	74	0
***** Changes From FY2019 Management Plan To FY2020 Governor Amended *****												

Change Record Detail - Multiple Scenarios with Descriptions (294)
Department of Fish and Game

Component: AYK Region Fisheries Management (2169)
RDU: Commercial Fisheries (143)

Scenario/Change Record Title	Trans Type	Totals	Personal Services	Travel	Services	Commodities	Capital Outlay	Grants, Benefits	Miscellaneous	Positions		
										PFT	PPT	NP
Transfer to State Subsistence Research for Harvest Survey Project												
1004 Gen Fund	Trout	-118.2	-118.2	0.0	0.0	0.0	0.0	0.0	0.0	0	0	0
Transfer funding to the State Subsistence Research component to properly align with the transfer of the Kuskokwim Area Salmon Post Season Subsistence Harvest Survey project.												
PCNs (11-5176,11-5229, and 11-1155) were transferred in FY2019 Management plan for this Subsistence project. This transfer of funding would complete the project allocation to the State Subsistence Research component.												
Executive Branch 50% Travel Reduction												
1002 Fed Rcpts	Dec	-23.5	0.0	-146.8	0.0	0.0	0.0	0.0	0.0	0	0	0
1004 Gen Fund		-88.6										
1005 GF/Prgm		-0.8										
1007 I/A Rcpts		-26.4										
1108 Stat Desig		-4.4										
1201 CFEC Rcpts		-3.1										
50% executive branch travel reduction based on actual costs of travel in FY2018. Exceptions were made to travel essential to public safety, health, and disaster management.												
Eliminate Charter Revolving Loan Fund												
1223 CharterRLF	Dec	-465.0	-465.0	0.0	0.0	0.0	0.0	0.0	0.0	0	0	0
In FY2019 increments were added to the Division of Commercial Fisheries Budget for specific projects. The fund source, The Charter Revolving Loan Fund (CRLF), is no longer available.												
Totals		9,413.8	6,454.0	137.6	1,947.7	778.2	96.3	0.0	0.0	36	74	0

Personal Services Expenditure Detail (1445)

Department of Fish and Game

Scenario: FY2020 Governor Amended (15636)
 Component: AYK Region Fisheries Management (2169)
 RDU: Commercial Fisheries (143)

Status PCN	Tracking ID	Job Class Title	Time Status	Retire Code	Barg Unit	Location	Salary Sched	Range / Steps	Comp Months	Split / Count	Annual Salaries	COLA	Premium Pay	Annual Benefits	Total Costs	UGF Amount
11-0420	12280	Fish & Game Program Tech	FT	A	GP	Kotzebue	260	12 C	2.4	*	12,994	526	0	8,237	21,757	21,757
11-1017	12330	Fishery Biologist III	FT	A	SS	Fairbanks	99	18 M / N	12.0		88,234	0	0	49,650	137,884	137,884
11-1021	12334	Fishery Biologist III	FT	A	SS	Anchorage	200	18 F	12.0		75,672	0	7,000	47,708	130,380	130,380
11-1023	12336	Fishery Biologist III	FT	A	SS	Nome	99	18 P	12.0		129,660	0	0	64,121	193,781	193,781
11-1055	12361	Information Officer II	FT	A	GP	Anchorage	200	17 C	6.0	*	28,796	1,166	0	19,304	49,266	49,266
11-1092	12378	Fishery Biologist IV	FT	A	SS	Fairbanks	99	20 N	12.0		104,448	0	0	55,314	159,762	
11-1099	12381	Fish and Game Coordinator	FT	A	SS	Anchorage	200	22 F	12.0		98,700	0	0	53,306	152,006	152,006
11-1126	12404	Fishery Biologist I	PT	A	GP	Fairbanks	203	14 D	3.5		14,434	686	2,522	11,316	28,958	
11-1127	12405	F&W Technician III	PT	A	GP	Fairbanks	203	11 B	2.0		6,356	447	4,694	6,942	18,439	7,376
11-1153	12423	Fishery Biologist II	FT	A	SS	Anchorage	200	16 F / J	12.0		66,286	0	8,267	44,872	119,425	108,677
11-1154	12424	F&W Technician II	PT	A	GP	Bethel	250	9 B	2.1		8,629	472	3,034	7,310	19,445	19,445
11-1162	12431	F&W Technician IV	PT	A	GP	Anchorage	200	13 L / M	7.0		31,873	2,326	25,600	30,861	90,660	17,225
11-1163	12432	F&W Technician II	PT	A	GP	Bethel	250	9 C / D	1.5		6,533	622	8,834	7,679	23,668	23,668
11-1164	12433	F&W Technician II	PT	A	GP	Emmonak	250	9 C	3.0		12,687	640	3,122	10,145	26,594	26,594
11-1168	12437	Fishery Biologist I	PT	A	GP	Nome	237	14 C / D	6.5		35,259	1,516	2,196	23,099	62,070	43,449
11-1170	12439	F&W Technician II	PT	A	GP	Nome	237	9 C	1.5		5,793	235	0	4,335	10,363	10,363
11-1174	26135	Research Analyst II	FT	A	GP	Anchorage	200	16 E / F	11.0		54,003	2,275	2,205	36,583	95,066	95,066
11-1175	26137	Fishery Biologist II	FT	A	SS	Anchorage	200	16 K	12.0		70,476	0	0	43,448	113,924	113,924
11-1176	26136	Fisheries Scientist I	FT	A	SS	Anchorage	200	22 C	12.0		89,040	0	0	49,932	138,972	138,972
11-1207	12446	Analyst/Programmer IV	FT	A	SS	Anchorage	99	20 N	12.0		101,400	0	0	54,249	155,649	155,649
11-1223	12456	Fishery Biologist III	FT	A	SS	Anchorage	200	18 N	12.0		88,776	0	0	49,840	138,616	138,616
11-1262	12474	Fishery Biologist II	FT	A	SS	Nome	237	16 D / E	12.0		86,072	0	0	48,895	134,967	134,967
11-1277	12485	Fish and Game Coordinator	FT	A	SS	Anchorage	200	22 C / D	12.0		89,309	0	0	50,026	139,335	139,335
11-1279	12487	Publications Spec II	FT	A	GP	Anchorage	200	16 L / M	6.0	*	34,832	1,552	0	21,412	57,796	57,796
11-1280	29047	Fishery Biologist III	FT	A	SS	Anchorage	99	18 O / P	12.0		93,900	0	0	51,630	145,530	133,888
11-1286	12493	F&W Technician II	PT	A	GP	Bethel	250	9 A	2.0		7,968	323	0	5,865	14,156	
11-1292	12496	Office Assistant II	FT	A	GP	Anchorage	200	10 A	12.0		33,828	1,369	0	30,306	65,503	65,503
11-1296	29049	Fishery Biologist III	FT	A	SS	Anchorage	200	18 B / C	12.0		68,030	0	9,500	45,912	123,442	117,270
11-1299	12501	Fish & Game Program Tech	FT	A	GP	Nome	237	12 A / B	12.0		52,291	2,117	0	36,756	91,164	91,164

Note: If a position is split, an asterisk (*) will appear in the Split/Count column. If the split position is also counted in the component, two asterisks (**) will appear in this column.
 [No valid job title] appearing in the Job Class Title indicates that the PCN has an invalid class code or invalid range for the class code effective date of this scenario.

Personal Services Expenditure Detail (1445)

Department of Fish and Game

Scenario: FY2020 Governor Amended (15636)
 Component: AYK Region Fisheries Management (2169)
 RDU: Commercial Fisheries (143)

Status	PCN	Tracking ID	Job Class Title	Time Status	Retire Code	Barg Unit	Location	Salary Sched	Range / Steps	Comp Months	Split / Count	Annual Salaries	COLA	Premium Pay	Annual Benefits	Total Costs	UGF Amount
11-1301		12503	Accounting Tech I	FT	A	GP	Anchorage	200	12 C / D	12.0		41,544	1,682	0	33,002	76,228	76,228
11-1309		12508	Fish & Game Program Tech	FT	A	GP	Fairbanks	203	12 G	12.0		47,712	1,931	0	35,156	84,799	84,799
11-1314		12513	Fishery Biologist II	FT	A	SS	Nome	237	16 L	12.0		99,672	0	4,500	55,218	159,390	159,390
11-1315		12514	Analyst/Programmer III	FT	A	GP	Anchorage	200	18 L / M	12.0		79,921	3,235	0	46,407	129,563	129,563
11-1317		12516	Fishery Biologist II	FT	A	GP	Anchorage	200	16 E / F	12.0		59,121	2,515	3,000	40,189	104,825	98,536
11-1343		12534	Fishery Biologist I	PT	A	GP	Nome	237	14 L	3.5		23,650	1,412	11,226	17,575	53,863	22,622
11-1364		12551	F&W Technician III	PT	A	GP	Aniak	250	11 B / C	4.0		18,995	1,149	9,398	16,081	45,623	
11-1402		12579	Fishery Biologist II	FT	A	SS	Anchorage	200	16 C / D	12.0		61,608	0	7,500	42,970	112,078	112,078
11-1423		29060	Fishery Biologist II	FT	A	SS	Anchorage	200	16 B / C	12.0		57,605	0	7,300	41,502	106,407	106,407
11-1425		29061	Fishery Biologist II	FT	A	SS	Anchorage	200	16 D	12.0		61,608	0	4,110	41,786	107,504	107,504
11-1436		29062	F&W Technician III	PT	A	GP	Fairbanks	203	11 B / C	1.5		4,908	321	3,021	5,081	13,331	
11-1438		12607	F&W Technician II	PT	A	GP	Aniak	250	9 B	4.0		16,436	665	0	11,905	29,006	29,006
11-1439		12608	F&W Technician III	PT	A	GP	Fairbanks	203	11 D	1.0		3,372	168	778	2,990	7,308	
11-1478		12625	Fishery Biologist I	PT	A	GP	Anchorage	200	14 A / B	2.0		7,468	667	9,000	8,834	25,969	25,969
11-1480		12627	F&W Technician IV	PT	A	GP	Anchorage	200	13 J	10.0		43,200	2,080	8,187	33,358	86,825	86,825
11-1481		12628	F&W Technician II	PT	A	GP	Unalakleet	250	9 B	3.0		12,327	683	4,552	10,518	28,080	28,080
11-1486		12633	F&W Technician II	PT	A	GP	Nome	237	9 D	2.5		9,943	569	4,103	8,758	23,373	23,373
11-1487		12634	F&W Technician III	PT	A	GP	Aniak	250	11 D	2.0		9,822	690	7,219	9,034	26,765	
11-1488		29065	F&W Technician III	PT	A	GP	Aniak	250	11 J	3.5		19,747	1,009	5,187	14,102	40,045	40,045
11-1489		12636	F&W Technician II	PT	A	GP	Eagle	200	9 D	0.5		1,452	97	937	1,605	4,091	4,091
11-1490		29066	F&W Technician IV	PT	A	GP	Anchorage	200	13 K / L	9.5		43,095	2,139	9,735	33,092	88,061	
11-1492		12639	F&W Technician III	PT	A	GP	Bethel	250	11 D	0.5		2,456	120	500	1,803	4,879	4,879
11-1493		12640	F&W Technician II	PT	A	GP	Emmonak	250	9 C	1.0		4,229	384	5,256	4,854	14,723	
11-1509		12653	F&W Technician II	PT	A	GP	Aniak	250	9 C	3.5		14,802	662	1,561	11,109	28,134	
11-1513		12656	F&W Technician III	PT	A	GP	Anchorage	200	11 F	5.8		20,230	819	0	16,003	37,052	9,263
11-1524		12666	F&W Technician II	PT	A	GP	Nome	237	9 D	3.0		11,931	520	917	9,110	22,478	
11-1525		12667	F&W Technician II	PT	A	GP	Saint Marys	250	9 B / C	5.0		20,785	980	3,414	16,157	41,336	41,336
11-1528		12670	F&W Technician II	PT	A	GP	Emmonak	250	9 J / K	2.0		10,258	569	3,787	7,988	22,602	22,602
11-1531		12673	F&W Technician II	PT	A	GP	Saint Marys	250	9 D	5.0		21,775	1,016	3,336	16,476	42,603	42,603

Note: If a position is split, an asterisk (*) will appear in the Split/Count column. If the split position is also counted in the component, two asterisks (**) will appear in this column.
 [No valid job title] appearing in the Job Class Title indicates that the PCN has an invalid class code or invalid range for the class code effective date of this scenario.

Personal Services Expenditure Detail (1445)

Department of Fish and Game

Scenario: FY2020 Governor Amended (15636)
Component: AYK Region Fisheries Management (2169)
RDU: Commercial Fisheries (143)

Status	PCN	Tracking ID	Job Class Title	Time Status	Retire Code	Barg Unit	Location	Salary Sched	Range / Steps	Comp Months	Split / Count	Annual Salaries	COLA	Premium Pay	Annual Benefits	Total Costs	UGF Amount
11-1533		12675	F&W Technician II	PT	A	GP	Kotzebue	260	9 E	1.0		4,802	194	0	3,218	8,214	8,214
11-1539		12681	F&W Technician II	PT	A	GP	Bethel	250	9 E	3.5		15,757	819	4,486	12,464	33,526	33,526
11-1541		12683	F&W Technician II	PT	A	GP	Saint Marys	250	9 B / C	6.0		24,774	1,126	3,034	18,959	47,893	47,893
11-1544		12686	F&W Technician III	PT	A	GP	Bethel	250	11 C	3.5		16,681	870	4,815	12,902	35,268	35,268
11-1560		12700	Fishery Biologist I	PT	A	GP	Anchorage	200	14 C / D	11.6		45,654	2,256	10,071	37,339	95,320	49,566
11-1564		12704	F&W Technician II	PT	A	GP	Bethel	250	9 B / C	3.0		12,387	1,039	13,283	13,589	40,298	
11-1569		29069	F&W Technician II	PT	A	GP	Bethel	250	9 B	2.5		10,273	511	2,351	8,262	21,397	21,397
11-1607		12742	F&W Technician III	PT	A	GP	Bethel	250	11 D / E	7.8		38,438	1,877	7,932	28,216	76,463	9,176
11-1628		12760	F&W Technician II	PT	A	GP	Anvik	250	9 C	1.8		7,612	521	5,269	7,273	20,675	
11-1634		12764	F&W Technician II	PT	A	GP	Bethel	250	9 C / D	3.0		13,065	956	10,550	12,871	37,442	25,086
11-1636		12766	F&W Technician II	PT	A	GP	Bethel	250	9 A	3.0		11,952	878	9,746	12,202	34,778	
11-1641		12770	Fishery Biologist I	PT	A	GP	Fairbanks	203	14 C	9.5		37,772	1,728	4,913	29,548	73,961	48,075
11-1650		29076	F&W Technician II	PT	A	GP	Bethel	250	9 D	1.0		4,355	315	3,417	4,256	12,343	12,343
11-1676		12793	Fish & Game Program Tech	FT	A	GP	Anchorage	200	12 C / D	6.0	*	20,850	844	0	16,528	38,222	38,222
11-1719		12816	Fishery Biologist III	FT	A	SS	Fairbanks	203	18 F	12.0		77,940	0	4,500	47,627	130,067	
11-1720		12817	Fishery Biologist III	FT	A	SS	Fairbanks	99	18 P	12.0		97,488	0	302	52,988	150,778	150,778
11-1725		12822	F&W Technician II	PT	A	GP	Fairbanks	203	9 B	1.5		4,232	313	3,500	5,012	13,057	
11-1772		12848	Fishery Biologist I	PT	A	GP	Fairbanks	203	14 A / B	7.0		26,795	1,249	4,060	21,564	53,668	53,668
11-1773		12849	Fishery Biologist I	PT	A	GP	Anchorage	200	14 J	11.0		50,897	2,579	12,811	39,203	105,490	
11-1816		12859	F&W Technician III	PT	A	GP	Aniak	250	11 C	3.5		16,681	675	0	11,220	28,576	28,576
11-1839		12877	Administrative Officer II	FT	A	SS	Anchorage	99	19 P	6.0	*	50,586	0	0	27,085	77,671	77,671
11-1853		12888	Fishery Biologist III	FT	A	SS	Anchorage	200	18 E / F	12.0		73,932	0	0	44,655	118,587	118,587
11-1864		12892	F&W Technician III	PT	A	GP	Fairbanks	203	11 A / B	2.0		6,356	453	4,841	6,993	18,643	18,643
11-1885		12908	F&W Technician III	PT	A	GP	Saint Marys	250	11 B	5.0		23,140	1,110	4,272	17,279	45,801	45,801
11-1887		12910	F&W Technician II	PT	A	GP	Kotzebue	260	9 C / D	3.0		13,935	692	3,150	10,590	28,367	28,367
11-1888		29089	F&W Technician II	PT	A	GP	Anvik	250	9 B	1.8		7,396	415	2,845	6,351	17,007	
11-1889		12912	F&W Technician II	PT	A	GP	Nome	237	9 B	3.0		11,256	547	2,251	9,341	23,395	23,395
11-1890		12913	F&W Technician II	PT	A	GP	Emmonak	250	9 K	0.5		2,565	203	2,461	2,526	7,755	
11-1892		12914	F&W Technician II	PT	A	GP	Nome	237	9 C	0.5		1,931	78	0	1,445	3,454	3,454

Note: If a position is split, an asterisk (*) will appear in the Split/Count column. If the split position is also counted in the component, two asterisks (**) will appear in this column.
 [No valid job title] appearing in the Job Class Title indicates that the PCN has an invalid class code or invalid range for the class code effective date of this scenario.

Personal Services Expenditure Detail (1445)

Department of Fish and Game

Scenario: FY2020 Governor Amended (15636)
Component: AYK Region Fisheries Management (2169)
RDU: Commercial Fisheries (143)

Status	PCN	Tracking ID	Job Class Title	Time Status	Retire Code	Barg Unit	Location	Salary Sched	Range / Steps	Comp Months	Split / Count	Annual Salaries	COLA	Premium Pay	Annual Benefits	Total Costs	UGF Amount
11-1894	29090	F&W Technician II	PT	A	GP	Saint Marys	250	9 B / C	6.0	24,774	1,149	3,603	19,157	48,683	48,683		
11-1895	12917	F&W Technician II	PT	A	GP	Emmonak	250	9 C	0.5	2,115	172	2,146	2,259	6,692			
11-1903	12923	F&W Technician III	PT	A	GP	Bethel	250	11 D	2.5	12,278	589	2,266	8,932	24,065	24,065		
11-1907	12927	F&W Technician III	PT	A	GP	Unalakleet	250	11 B / C	4.7	21,779	1,124	5,980	16,938	45,821	39,864		
11-1910	12929	F&W Technician III	PT	A	GP	Fairbanks	203	11 D	1.7	5,732	484	6,225	6,796	19,237			
11-1912	12930	Fishery Biologist I	PT	A	GP	Nome	237	14 D	8.8	48,268	2,159	5,062	32,188	87,677	29,810		
11-1914	12931	Fishery Biologist II	FT	A	SS	Fairbanks	203	16 F	12.0	68,088	0	0	42,613	110,701	110,701		
11-1918	12935	F&W Technician III	PT	A	GP	Nome	237	11 G	5.5	27,209	1,157	1,369	18,457	48,192	22,168		
11-1919	12936	Fishery Biologist I	PT	A	GP	Nome	237	14 K / L	7.0	47,299	2,053	3,430	28,506	81,288	17,883		
11-1923	12939	Fishery Biologist II	FT	A	SS	Fairbanks	203	16 A / B	12.0	59,256	0	6,867	41,927	108,050	108,050		
11-1930	12944	F&W Technician II	PT	A	GP	Saint Marys	250	9 B / C	6.0	24,774	1,152	3,686	19,186	48,798	48,798		
11-1933	12947	Fishery Biologist I	PT	A	GP	Anchorage	200	14 D	2.0	8,008	676	8,696	8,916	26,296			
11-1937	12951	F&W Technician IV	PT	A	GP	Fairbanks	203	13 K	3.0	13,782	900	8,440	12,385	35,507			
11-1948	12962	F&W Technician II	PT	A	GP	Bethel	250	9 B	3.0	12,327	883	9,483	12,241	34,934			
11-1956	12968	Fishery Biologist II	FT	A	SS	Fairbanks	203	16 E / F	12.0	67,413	0	82	42,406	109,901	109,901		
11-1973	12984	F&W Technician II	PT	A	GP	Nome	237	9 D	4.5	17,897	903	4,404	14,724	37,928	37,928		
11-1976	29097	Fishery Biologist I	PT	A	GP	Fairbanks	203	14 F / G	7.0	31,237	1,331	1,636	16,876	51,080	51,080		
11-4201	13408	F&W Technician III	PT	A	GP	Delta Junction	200	11 F / G	1.6	5,778	234	0	4,484	10,496			
11-4263	13458	Fishery Biologist I	PT	A	GP	Anchorage	99	14 O	1.0	5,428	237	1,253	3,875	10,793			
11-5026	13563	Administrative Assistant II	FT	A	SS	Anchorage	600	14 E / F	12.0	55,584	0	0	38,246	93,830	93,830		
11-5041	13573	Fishery Biologist II	FT	A	SS	Fairbanks	203	16 E / F	12.0	66,448	0	0	42,041	108,489	86,791		
11-5104	29106	Fishery Biologist II	FT	A	SS	Anchorage	200	16 C / D	12.0	60,954	0	4,225	41,597	106,776	97,166		
11-5136	13617	Fish and Game Coordinator	FT	A	SS	Anchorage	200	22 K / L	12.0	107,500	0	6,864	58,778	173,142	173,142		
11-5172	13633	F&W Technician III	PT	A	GP	Nome	237	11 D	5.5	24,668	1,283	7,038	19,550	52,539	52,539		
11-5193	29109	F&W Technician II	PT	A	GP	Emmonak	250	9 C	2.0	8,458	492	3,707	7,331	19,988	19,988		
11-5224	13661	F&W Technician II	PT	A	GP	Nome	237	9 B	4.0	15,008	678	1,731	12,010	29,427	25,896		
11-5259	13680	F&W Technician II	PT	A	GP	Bethel	250	9 B / C	3.0	12,567	893	9,483	12,325	35,268			
11-5357	13744	Fishery Biologist I	PT	A	GP	Anchorage	200	14 D	6.0	24,024	972	0	17,637	42,633	42,633		
11-5368	13752	F&W Technician II	PT	A	GP	Eagle	200	9 D / E	1.5	4,404	338	3,937	5,225	13,904			

Note: If a position is split, an asterisk (*) will appear in the Split/Count column. If the split position is also counted in the component, two asterisks (**) will appear in this column.
 [No valid job title] appearing in the Job Class Title indicates that the PCN has an invalid class code or invalid range for the class code effective date of this scenario.

Personal Services Expenditure Detail (1445)

Department of Fish and Game

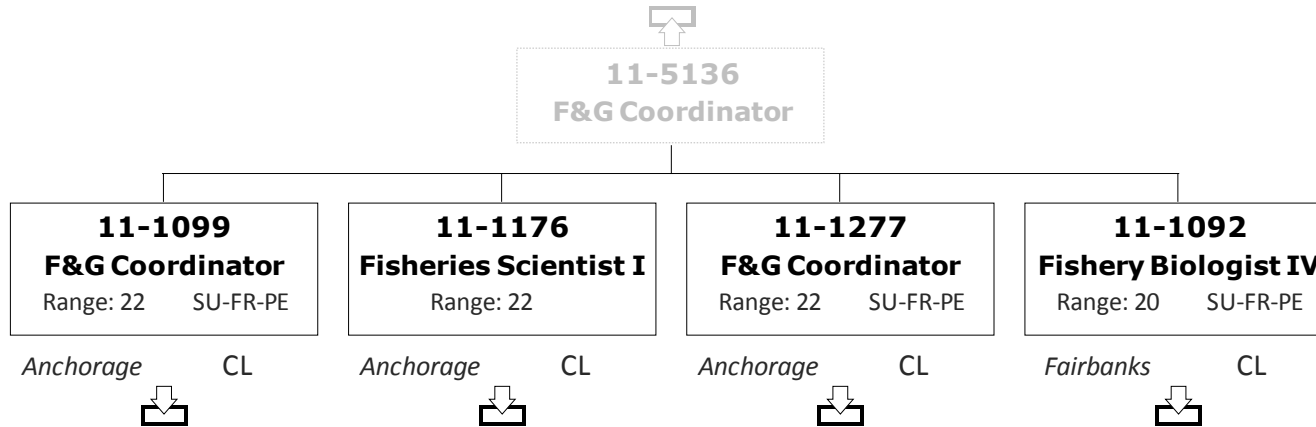
Scenario: FY2020 Governor Amended (15636)
Component: AYK Region Fisheries Management (2169)
RDU: Commercial Fisheries (143)

Status	PCN	Tracking ID	Job Class Title	Time Status	Retire Code	Barg Unit	Location	Salary Sched	Range / Steps	Comp Months	Split / Count	Annual Salaries	COLA	Premium Pay	Annual Benefits	Total Costs	UGF Amount	
11-7019		13822	Accounting Tech II	FT	A	SS	Anchorage	600	14 D	8.0	**	35,668	0	0	25,012	60,680	60,680	
														Total Salary Costs:	4,074,178			
														Total COLA:	84,461			
														Total Premium Pay:	431,971			
														Total Benefits:	2,715,840			
														Total Pre-Vacancy:	7,306,450			
														Minus Vacancy Adjustment of 3.48%:	(254,150)			
														Total Post-Vacancy:	7,052,300			
														Plus Lump Sum Premium Pay:	0			
														Personal Services Line 100:	7,052,300			
				Total Component Months:	738.1													

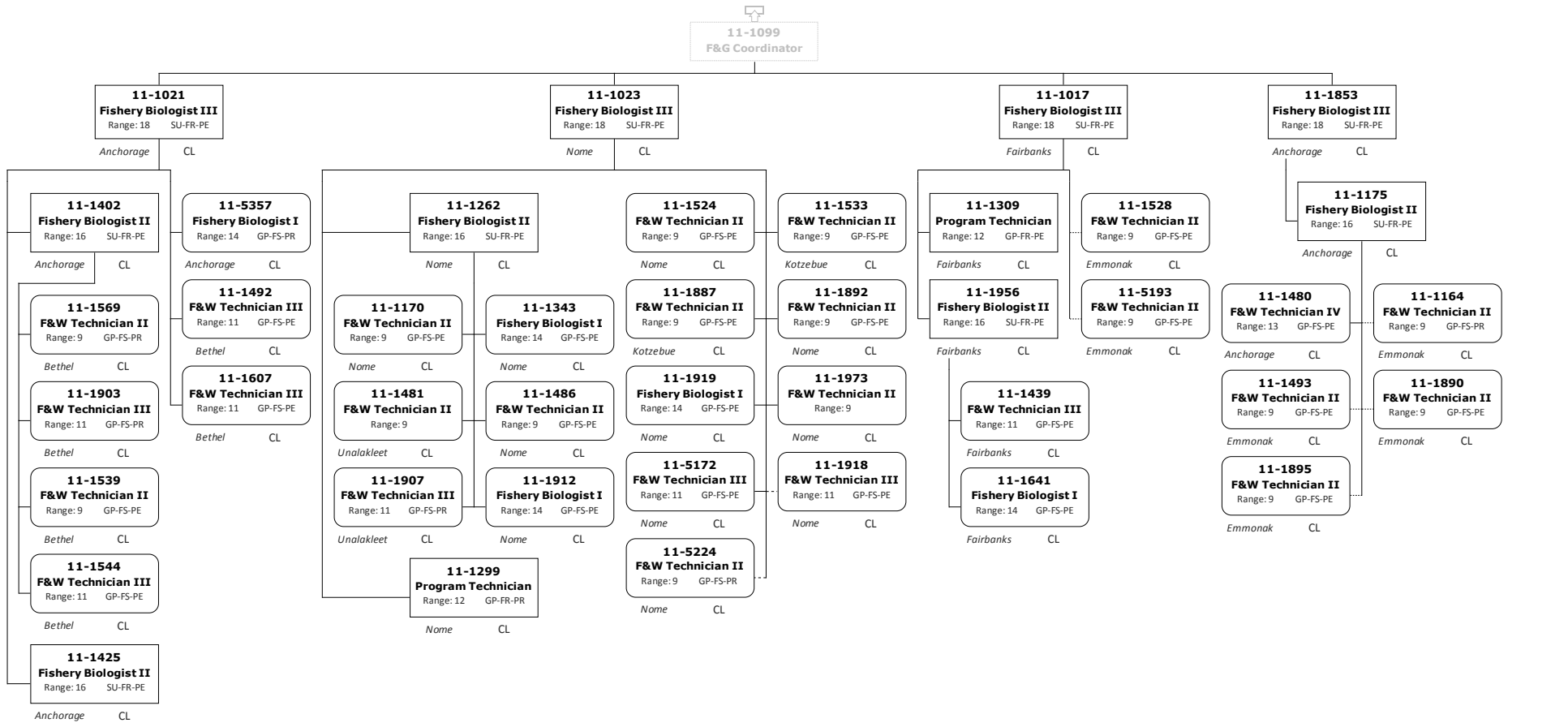
PCN Funding Sources:		Pre-Vacancy	Post-Vacancy	Percent
1002	Federal Receipts	800,875	773,018	10.96%
1004	General Fund Receipts	5,758,522	5,558,216	78.81%
1005	General Fund/Program Receipts	181,458	175,146	2.48%
1007	Interagency Receipts	10,748	10,374	0.15%
1061	Capital Improvement Project Receipts	54,220	52,334	0.74%
1108	Statutory Designated Program Receipts	18,621	17,973	0.25%
1109	Test Fisheries Receipts	14,447	13,944	0.20%
1201	Commercial Fisheries Entry Commission Receipts	467,558	451,295	6.40%
Total PCN Funding:		7,306,450	7,052,300	100.00%

Note: If a position is split, an asterisk (*) will appear in the Split/Count column. If the split position is also counted in the component, two asterisks (**) will appear in this column. [No valid job title] appearing in the Job Class Title indicates that the PCN has an invalid class code or invalid range for the class code effective date of this scenario.

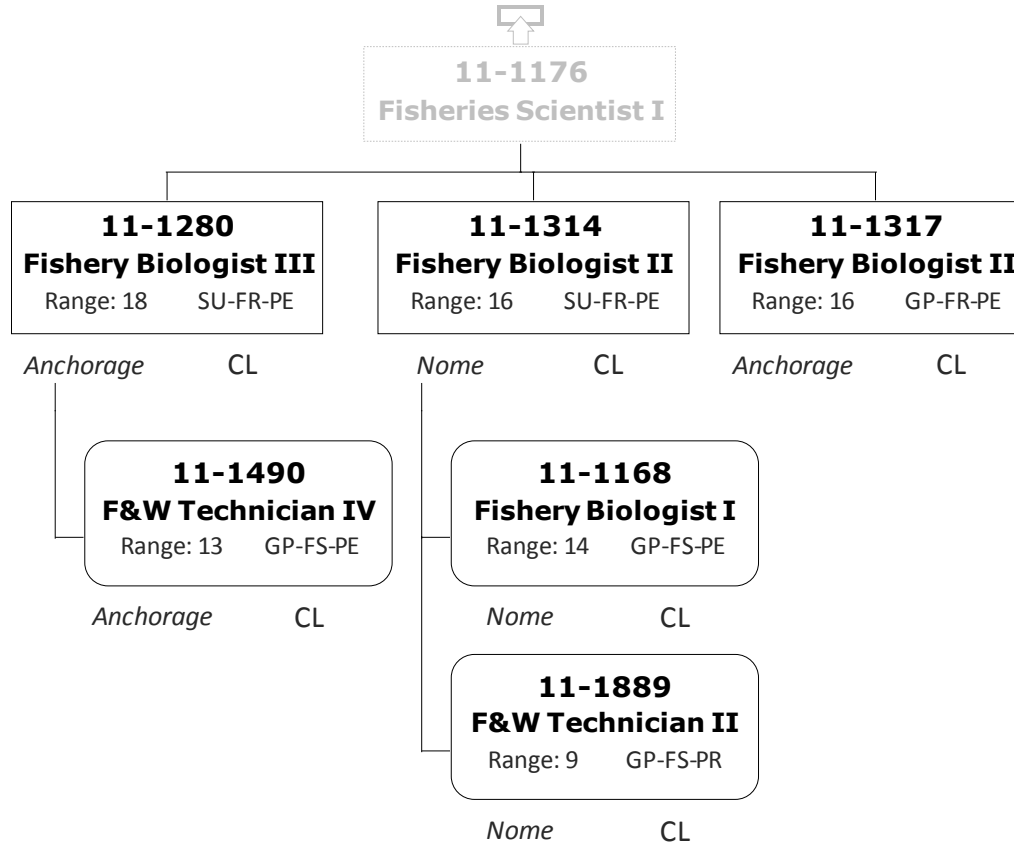
Division of Commercial Fisheries
2169 - AYK Region Fish Management



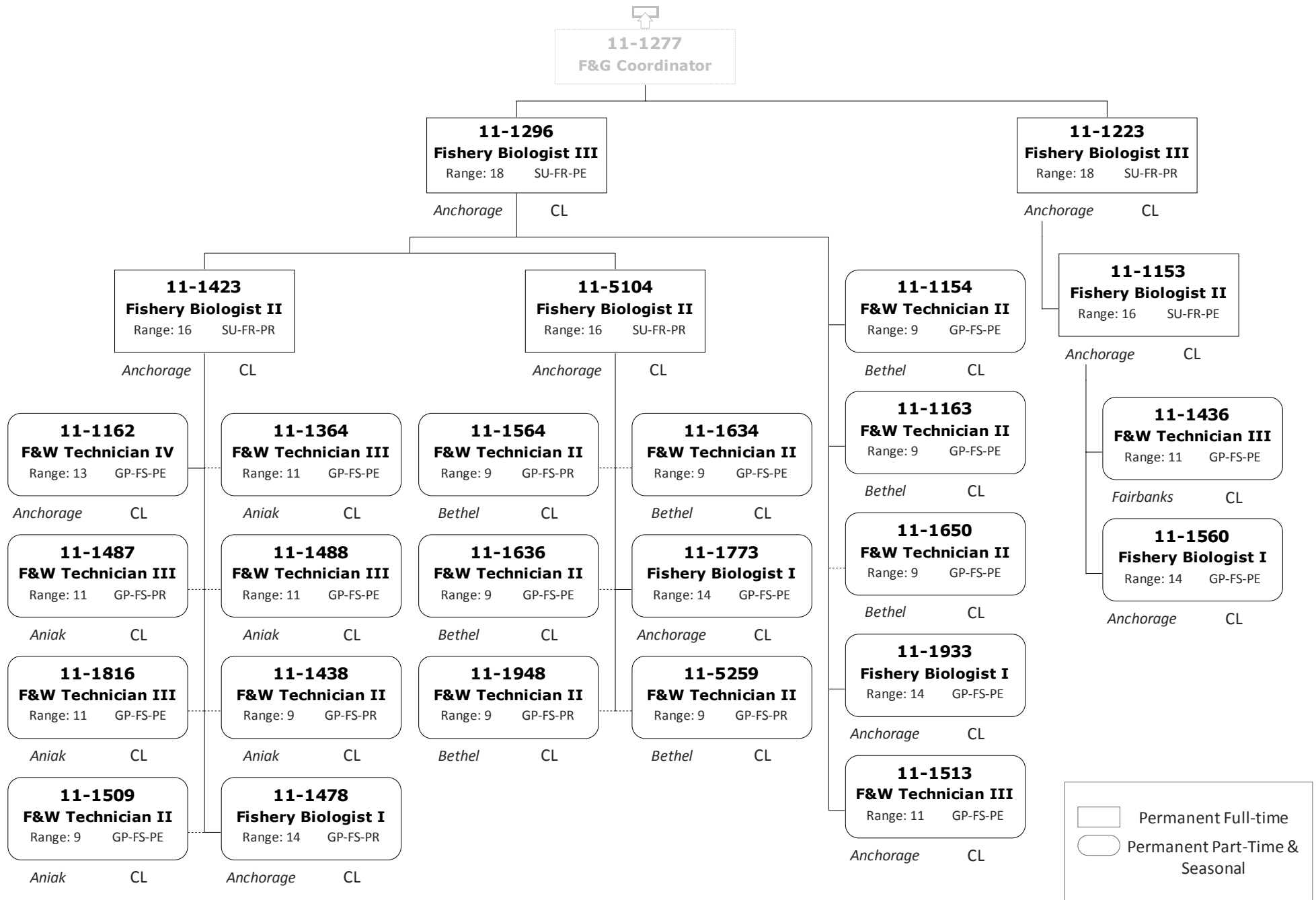
Division of Commercial Fisheries 2169 - AYK Region Fish Management



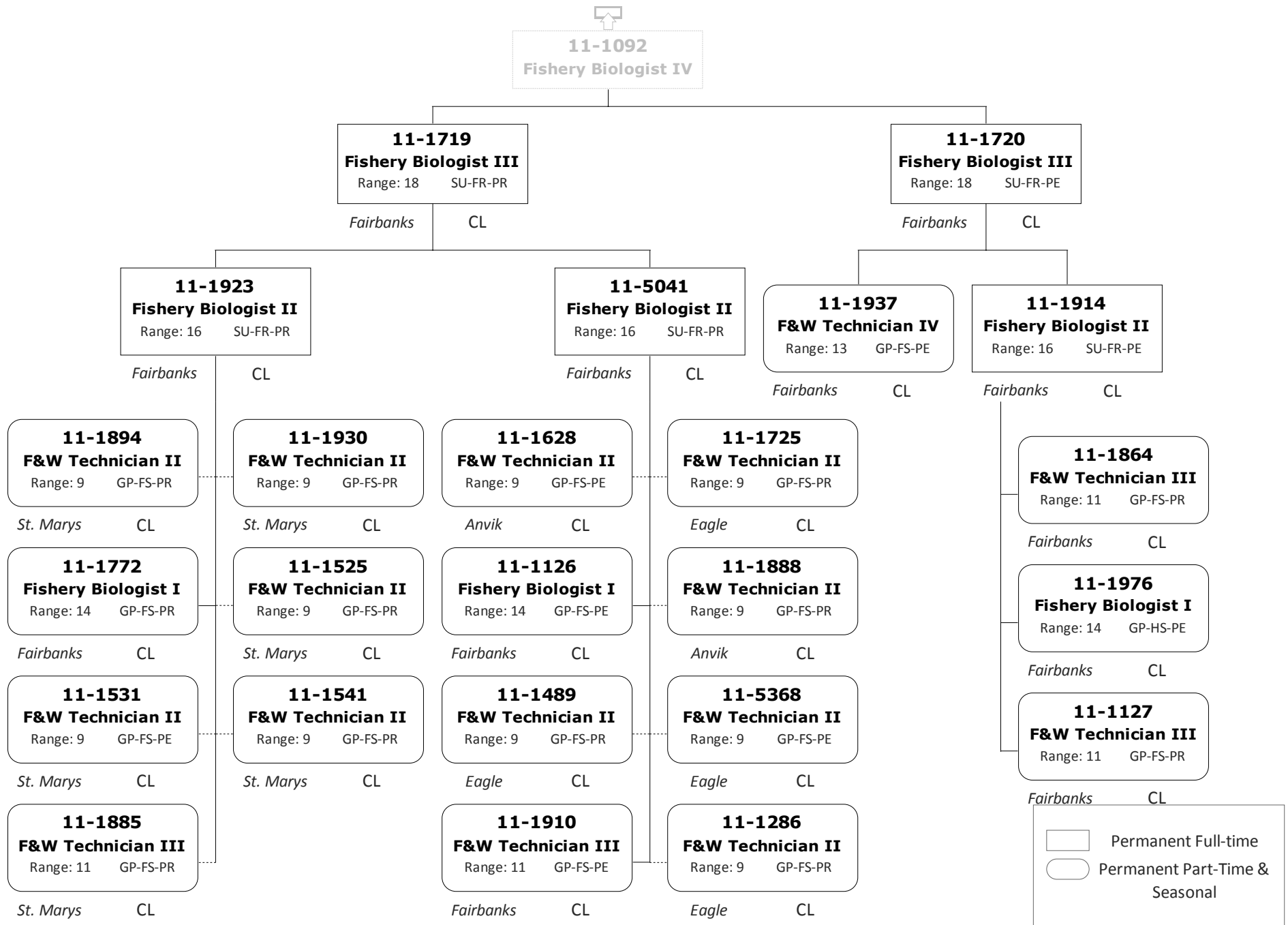
Division of Commercial Fisheries
 2169 - AYK Region Fish Management



Division of Commercial Fisheries
2169 - AYK Region Fish Management



Division of Commercial Fisheries
2169 - AYK Region Fish Management



Division of Commercial Fisheries
2169 - AYK Region Fisheries Management

