

Component Detail (1077)
Department of Fish and Game

Component: Statewide Fisheries Management (2171)

Non-Formula Component

RDU: Commercial Fisheries (143)

IRIS AP Type: FCFS

	FY2018 Actuals (15158)	FY2019 Conference Committee (14954)	FY2019 Authorized (14962)	FY2019 Management Plan (14994)	FY2020 Governor (15610)	FY2020 Governor Amended (15636)	FY2020 Governor vs FY2020 Governor Amended	
1000 Personal Services	10,725.5	11,762.4	11,762.4	11,762.4	12,003.2	11,762.4	-240.8	-2.0%
2000 Travel	255.0	312.1	312.1	312.1	312.1	184.7	-127.4	-40.8%
3000 Services	4,825.0	6,261.7	6,261.7	6,219.7	6,219.7	6,219.7	0.0	0.0%
4000 Commodities	919.1	552.5	552.5	552.5	552.5	552.5	0.0	0.0%
5000 Capital Outlay	346.3	88.4	88.4	88.4	88.4	88.4	0.0	0.0%
7000 Grants, Benefits	0.0	0.0	0.0	0.0	0.0	0.0	0.0	0.0%
8000 Miscellaneous	0.0	0.0	0.0	0.0	500.0	0.0	-500.0	-100.0%
Totals	17,070.9	18,977.1	18,977.1	18,935.1	19,675.9	18,807.7	-868.2	-4.4%
<u>Funding Sources:</u>								
1002 Fed Rcpts (Fed)	1,064.0	2,271.6	2,271.6	2,271.6	2,294.1	2,256.9	-37.2	-1.6%
1004 Gen Fund (UGF)	8,482.6	8,969.4	8,969.4	8,969.4	9,590.3	8,907.3	-683.0	-7.1%
1005 GF/Prgm (DGF)	1,443.2	1,394.9	1,394.9	1,394.9	1,399.3	1,384.2	-15.1	-1.1%
1007 I/A Rcpts (Other)	699.0	758.2	758.2	758.2	770.9	751.3	-19.6	-2.5%
1018 EVOSS (Other)	135.7	201.6	201.6	201.6	201.9	201.1	-0.8	-0.4%
1024 Fish/Game (Other)	182.3	902.7	902.7	902.7	218.7	202.7	-16.0	-7.3%
1061 CIP Rcpts (Other)	119.8	492.4	492.4	492.4	502.2	492.4	-9.8	-2.0%
1108 Stat Desig (Other)	1,901.0	1,615.4	1,615.4	1,615.4	1,651.3	1,584.3	-67.0	-4.1%
1134 F&G CFP (DGF)	0.0	400.0	400.0	400.0	0.0	0.0	0.0	0.0%
1201 CFEC Rcpts (DGF)	3,043.3	1,970.9	1,970.9	1,928.9	3,047.2	3,027.5	-19.7	-0.6%
<u>Funding Totals:</u>								
Unrestricted General (UGF)	8,482.6	8,969.4	8,969.4	8,969.4	9,590.3	8,907.3	-683.0	-7.1%
Designated General (DGF)	4,486.5	3,765.8	3,765.8	3,723.8	4,446.5	4,411.7	-34.8	-0.8%
Other	3,037.8	3,970.3	3,970.3	3,970.3	3,345.0	3,231.8	-113.2	-3.4%
Federal	1,064.0	2,271.6	2,271.6	2,271.6	2,294.1	2,256.9	-37.2	-1.6%
<u>Positions:</u>								
Permanent Full Time	86	85	85	86	86	85	-1	-1.2%
Permanent Part Time	16	16	16	15	15	15	0	0.0%
Non Permanent	0	0	0	0	0	0	0	0.0%

Change Record Detail - Multiple Scenarios with Descriptions (294)
Department of Fish and Game

Component: Statewide Fisheries Management (2171)
RDU: Commercial Fisheries (143)

Scenario/Change Record Title	Trans Type	Totals	Personal Services	Travel	Services	Commodities	Capital Outlay	Grants, Benefits	Miscellaneous	PFT	Positions PPT	NP
***** Changes From FY2019 Conference Committee To FY2019 Authorized *****												
FY2019 Conference Committee												
	ConfCom	18,977.1	11,762.4	312.1	6,261.7	552.5	88.4	0.0	0.0	85	16	0
1002 Fed Rcpts		2,271.6										
1004 Gen Fund		8,969.4										
1005 GF/Prgm		1,394.9										
1007 I/A Rcpts		758.2										
1018 EVOSS		201.6										
1024 Fish/Game		902.7										
1061 CIP Rcpts		492.4										
1108 Stat Desig		1,615.4										
1134 F&G CFP		400.0										
1201 CFEC Rcpts		1,970.9										
Subtotal		18,977.1	11,762.4	312.1	6,261.7	552.5	88.4	0.0	0.0	85	16	0
***** Changes From FY2019 Authorized To FY2019 Management Plan *****												
Transfer Fish and Game Program Technician (11-1060) from Southeast Region Fisheries Management												
	Trin	0.0	0.0	0.0	0.0	0.0	0.0	0.0	0.0	1	0	0
Transfer (11-1060) Full-Time, Fish and Game Program Technician, range 12, located in Juneau, from the Southeast Region Fisheries Management component. This transfer is needed due to the ongoing influx of sampling information in paper and electronic submissions in the Mark, Tag, and Age Laboratory.												
Transfer Grants Administrator III (11-5117) to Administrative Services												
	Trout	0.0	0.0	0.0	0.0	0.0	0.0	0.0	0.0	-1	0	0
Transfer (11-5117) Full-Time, Grants Administrator III, range 19, located in Juneau, to the Administrative Services component to facilitate the centralization of grant functions.												
Transfer to Central Region Fisheries Management for Planned Spending												
	Trout	-42.0	0.0	0.0	-42.0	0.0	0.0	0.0	0.0	0	0	0
1201 CFEC Rcpts		-42.0										
Transfer Commercial Fisheries Entry Commission receipts authority to the Central Region Fisheries Management component to align with project needs.												
Change GIS Analyst III (11-5020) from Part-Time to Full-Time												
	PosAdj	0.0	0.0	0.0	0.0	0.0	0.0	0.0	0.0	1	-1	0
Change (11-5020) GIS Analyst II, range 19, located in Juneau, from Part-Time to Full-Time to support critical duties that are currently filled with a non-perm position.												
Subtotal		18,935.1	11,762.4	312.1	6,219.7	552.5	88.4	0.0	0.0	86	15	0
***** Changes From FY2019 Management Plan To FY2020 Governor Amended *****												
Reverse Prevent Over Appropriation of Commercial Fisheries Entry Commission Receipt Authority												

Change Record Detail - Multiple Scenarios with Descriptions (294)
Department of Fish and Game

Component: Statewide Fisheries Management (2171)
RDU: Commercial Fisheries (143)

Scenario/Change Record Title	Trans Type	Totals	Personal Services	Travel	Services	Commodities	Capital Outlay	Grants, Benefits	Miscellaneous	Positions		NP
										PFT	PPT	
	OTI	-1,100.0	0.0	0.0	-1,100.0	0.0	0.0	0.0	0.0	0	0	0
1024 Fish/Game		-700.0										
1134 F&G CFP		-400.0										
Technical reversal of one-time appropriation.												
Restore Commercial Fisheries Entry Commission Receipt Authority												
	IncM	1,100.0	0.0	0.0	1,100.0	0.0	0.0	0.0	0.0	0	0	0
1201 CFEC Rcpts		1,100.0										
In FY2019, a one-time appropriation was made to avoid over-appropriation of Commercial Fisheries Entry Commission Receipt Authority. This authority is being restored.												
Transfer Communications Manager (11-7009) to Commissioner's Office												
	Trout	0.0	0.0	0.0	0.0	0.0	0.0	0.0	0.0	-1	0	0
Transfer (11-7009) Full-Time Communications Manager, range 22, located in Anchorage, to the Commissioner's Office. This position was repurposed when the Federal Fisheries Coordinator position became vacant. The communications manager leads department communications efforts and ensures the governor's office and general public are aware of emerging issues. Duties include writing and editing communications plans, news releases, and other various forms of communicating. The communications manager also develops positive, proactive outreach opportunities, and works across divisions to maintain consistent communication and coordination.												
Executive Branch 50% Travel Reduction												
	Dec	-127.4	0.0	-127.4	0.0	0.0	0.0	0.0	0.0	0	0	0
1002 Fed Rcpts		-14.7										
1004 Gen Fund		-62.1										
1005 GF/Prgm		-10.7										
1007 I/A Rcpts		-6.9										
1018 EVOSS		-0.5										
1108 Stat Desig		-31.1										
1201 CFEC Rcpts		-1.4										
50% executive branch travel reduction based on actual costs of travel in FY2018. Exceptions were made to travel essential to public safety, health, and disaster management.												
Totals		18,807.7	11,762.4	184.7	6,219.7	552.5	88.4	0.0	0.0	85	15	0

Personal Services Expenditure Detail (1445)

Department of Fish and Game

Scenario: FY2020 Governor Amended (15636)
 Component: Statewide Fisheries Management (2171)
 RDU: Commercial Fisheries (143)

Status PCN	Tracking ID	Job Class Title	Time Status	Retire Code	Barg Unit	Location	Salary Sched	Range / Steps	Comp Months	Split / Count	Annual Salaries	COLA	Premium Pay	Annual Benefits	Total Costs	UGF Amount
11-0107	12185	Biometrician II	FT	A	GP	Kodiak	211	19 A	12.0		68,172	2,962	5,000	44,049	120,183	120,183
11-0212	12201	Accountant IV	FT	A	SS	Juneau	205	20 B / C	12.0		81,900	0	0	47,438	129,338	
11-0226	12213	F&W Technician III	PT	A	GP	Juneau	205	11 C	2.0	**	6,672	270	0	5,412	12,354	10,130
11-0227	12214	Accounting Tech III	FT	A	GP	Juneau	205	16 K	11.4	*	65,869	2,667	0	40,574	109,110	
11-0276	12247	Research Analyst III	FT	A	SS	Juneau	205	18 C / D	12.0		73,824	0	0	44,617	118,441	118,441
11-0618	12315	Program Coordinator II	PT	A	GP	Juneau	205	20 C / D	10.0		61,775	2,501	0	36,987	101,263	
11-1005	12319	Analyst/Programmer IV	FT	A	GP	Juneau	205	20 K	12.0		90,564	3,666	0	50,124	144,354	108,266
11-1007	12321	Office Assistant II	FT	A	GP	Juneau	205	10 C / D	12.0		37,988	1,538	0	31,760	71,286	
11-1015	12328	Fisheries Scientist I	FT	A	SS	Juneau	99	22 P	12.0		121,617	0	8,659	64,336	194,612	
11-1046	12355	Admin Operations Mgr II	FT	A	SS	Juneau	205	23 F / J	12.0		111,810	0	7,500	60,505	179,815	179,815
11-1060	12365	Fish & Game Program Tech	FT	A	GP	Juneau	205	12 A	12.0		40,032	1,620	0	32,473	74,125	74,125
11-1068	12370	Division Operations Manager	FT	A	SS	Juneau	205	24 J	12.0		122,496	0	0	61,618	184,114	184,114
11-1087	12375	Biometrician III	FT	A	GP	Anchorage	200	20 K	12.0		86,256	3,492	0	48,620	138,368	138,368
11-1088	12376	Analyst/Programmer IV	FT	A	GP	Anchorage	200	20 K	11.0	**	79,068	3,201	0	44,568	126,837	11,415
11-1129	29975	Analyst/Programmer V	FT	A	SS	Juneau	99	22 M	10.0	**	98,150	0	0	49,976	148,126	100,726
11-1167	12436	Fisheries Scientist I	FT	A	SS	Juneau	205	22 K	12.0		110,484	0	0	57,422	167,906	125,930
11-1203	12444	Fisheries Scientist II	FT	A	SS	Juneau	205	24 K	12.0		126,480	0	30,000	72,043	228,523	228,523
11-1204	12445	Fishery Biologist III	FT	A	GP	Juneau	205	18 C / D	12.0		66,236	2,803	3,000	42,674	114,713	14,913
11-1209	29045	Internet Specialist I	FT	A	GP	Juneau	205	16 L	12.0		71,592	2,898	0	43,497	117,987	117,987
11-1222	12455	Biometrician III	FT	A	GP	Juneau	99	20 O	12.0		102,924	4,166	0	54,442	161,532	161,532
11-1227	12459	Biometrician II	FT	A	GP	Juneau	205	19 K / L	12.0		85,727	3,470	0	48,435	137,632	137,632
11-1253	12466	Fisheries Scientist II	FT	A	SS	Anchorage	200	24 N / O	12.0		133,118	0	0	65,315	198,433	198,433
11-1254	12467	Fishery Biologist I	FT	A	GP	Juneau	205	14 E	7.5	**	32,917	1,333	0	23,054	57,304	40,113
11-1257	12469	Biometrician III	FT	A	GP	Juneau	205	20 E	12.0		78,732	3,268	2,000	46,690	130,690	130,690
11-1271	12480	Biometrician III	FT	A	SS	Anchorage	99	20 O / P	12.0		103,187	0	0	54,873	158,060	158,060
11-1278	12486	Fishery Biologist I	PT	A	SS	Soldotna	600	14 B	2.0	*	8,240	0	0	6,017	14,257	14,257
11-1289	12494	Data Processing Mgr II	FT	A	SS	Juneau	205	23 J / K	12.0		117,770	0	0	59,967	177,737	147,522
11-1300	12502	Fishery Biologist III	FT	A	GP	Juneau	99	18 M / N	12.0		84,583	3,525	2,500	48,908	139,516	128,355
11-1357	29054	Biometrician I	FT	A	GP	Juneau	205	17 B / C	12.0		59,757	2,467	1,200	39,783	103,207	103,207

Note: If a position is split, an asterisk (*) will appear in the Split/Count column. If the split position is also counted in the component, two asterisks (**) will appear in this column.
 [No valid job title] appearing in the Job Class Title indicates that the PCN has an invalid class code or invalid range for the class code effective date of this scenario.

Personal Services Expenditure Detail (1445)

Department of Fish and Game

Scenario: FY2020 Governor Amended (15636)
 Component: Statewide Fisheries Management (2171)
 RDU: Commercial Fisheries (143)

Status	PCN	Tracking ID	Job Class Title	Time Status	Retire Code	Barg Unit	Location	Salary Sched	Range / Steps	Comp Months	Split / Count	Annual Salaries	COLA	Premium Pay	Annual Benefits	Total Costs	UGF Amount
11-1375		12560	Fishery Biologist II	FT	A	GP	Anchorage	200	16 L	11.0	**	62,502	2,530	0	38,781	103,813	18,686
11-1390		12569	Fisheries Geneticist I	FT	A	GP	Anchorage	200	17 A	10.0	**	45,663	1,848	0	31,359	78,870	12,619
11-1427		12599	Fisheries Scientist I	FT	A	SS	Juneau	99	22 P / Q	12.0		126,423	0	0	62,990	189,413	189,413
11-1428		12600	Fishery Biologist II	FT	A	SS	Kodiak	211	16 C	1.5	*	8,301	0	0	5,253	13,554	13,554
11-1460		29064	Analyst/Programmer III	FT	A	GP	Juneau	205	18 G	8.0	**	49,152	1,989	0	29,496	80,637	33,868
11-1542		12684	Fishery Biologist I	PT	A	GP	Anchorage	200	14 C / D	11.5		44,750	1,909	2,408	34,192	83,259	
11-1557		12698	F&W Technician II	PT	A	GP	Dillingham	237	9 B	1.0	*	3,752	165	762	3,118	7,797	7,797
11-1583		12722	F&W Technician III	PT	A	GP	Juneau	99	11 O	11.0		50,974	2,167	2,568	35,652	91,361	5,482
11-1588		12726	Research Analyst I	FT	A	GP	Homer	99	13 M	0.6	*	2,853	119	0	1,921	4,893	
11-1610		12744	Accounting Tech II	FT	A	GP	Juneau	205	14 F / G	12.0		54,434	2,203	0	37,504	94,141	
11-1635		12765	Accounting Tech I	FT	A	GP	Juneau	205	12 C / D	12.0		43,345	1,755	0	33,631	78,731	
11-1695		12799	Biometrician III	FT	A	GP	Juneau	205	20 E	12.0		78,732	3,592	10,000	49,484	141,808	137,554
11-1698		12802	Fishery Biologist III	FT	A	SS	Juneau	99	18 O	12.0		102,672	0	600	54,903	158,175	158,175
11-1699		12803	Analyst/Programmer II	FT	A	GP	Juneau	205	16 B / C	12.0		54,724	2,215	0	37,605	94,544	16,072
11-1744		12839	F&W Technician IV	FT	A	GP	Juneau	205	13 K / L	12.0		56,576	2,309	475	38,418	97,778	57,689
11-1823		12865	Fisheries Geneticist II	FT	A	SS	Anchorage	200	19 J / K	12.0		83,960	0	0	48,158	132,118	132,118
11-1873		12898	Fishery Biologist III	FT	A	SS	Juneau	99	18 N / O	12.0		92,859	0	0	51,266	144,125	132,595
11-1880		12905	Research Analyst II	FT	A	GP	Juneau	205	16 E / F	12.0		61,005	2,469	0	39,799	103,273	51,637
11-1883		12906	Administrative Officer I	FT	A	SS	Juneau	205	17 E / F	12.0		73,929	0	0	44,654	118,583	118,583
11-1898		29978	Fishery Biologist II	FT	A	GP	Anchorage	200	16 C / D	12.0		54,044	2,188	0	37,368	93,600	25,272
11-1915		12932	Fisheries Scientist I	FT	A	SS	Juneau	205	22 E / F	12.0		102,287	0	5,954	56,639	164,880	31,327
11-1916		12933	Fisheries Geneticist III	FT	A	SS	Anchorage	200	21 K	12.0		98,364	0	0	53,189	151,553	151,553
11-1920		12937	E/J Prog Mgr	FT	A	SS	Juneau	205	24 B	12.0		103,632	0	0	55,029	158,661	158,661
11-1927		12941	Biometrician III	FT	A	SS	Anchorage	99	20 O	12.0		111,671	0	6,371	60,062	178,104	178,104
11-1939		12953	F&W Technician IV	FT	A	GP	Sitka	205	13 M	1.0	*	4,993	228	0	3,285	8,506	
11-1964		12976	Fisheries Scientist I	FT	A	SS	Anchorage	200	22 T / U	12.0		143,562	0	0	68,323	211,885	211,885
11-1978		12988	F&W Technician IV	PT	A	GP	Juneau	205	13 A / B	11.0		40,282	1,678	1,183	31,433	74,576	44,000
11-4099		13318	F&W Technician II	PT	A	GP	Juneau	205	9 B	3.0		8,628	403	1,327	8,100	18,458	6,276
11-4263		13458	Fishery Biologist I	PT	A	GP	Anchorage	99	14 O	7.0	**	37,996	1,657	1,253	24,496	65,402	

Note: If a position is split, an asterisk (*) will appear in the Split/Count column. If the split position is also counted in the component, two asterisks (**) will appear in this column.
 [No valid job title] appearing in the Job Class Title indicates that the PCN has an invalid class code or invalid range for the class code effective date of this scenario.

Personal Services Expenditure Detail (1445)

Department of Fish and Game

Scenario: FY2020 Governor Amended (15636)
 Component: Statewide Fisheries Management (2171)
 RDU: Commercial Fisheries (143)

Status	PCN	Tracking ID	Job Class Title	Time Status	Retire Code	Barg Unit	Location	Salary Sched	Range / Steps	Comp Months	Split / Count	Annual Salaries	COLA	Premium Pay	Annual Benefits	Total Costs	UGF Amount
11-5001	13550	Division Director	FT	A	XE	Juneau	N05 27 K	12.0				137,664	0	0	66,480	204,144	
11-5005	13551	Analyst/Programmer V	FT	A	SS	Juneau	99 22 M	9.1	**			90,245	0	0	45,802	136,047	57,140
11-5020	13559	Gis Analyst III	FT	A	GP	Juneau	205 19 G	12.0				78,732	3,349	4,000	47,389	133,470	45,380
11-5023	13561	Fishery Biologist III	FT	A	GP	Anchorage	200 18 F	12.0				68,064	2,755	0	42,265	113,084	80,290
11-5028	13565	Microbiologist I	FT	A	GP	Juneau	205 14 G / J	12.0				56,931	2,305	0	38,376	97,612	97,612
11-5037	13570	Fisheries Scientist I	FT	A	SS	Juneau	99 22 L	12.0				114,077	0	0	58,677	172,754	172,754
11-5038	13571	Fishery Biologist III	FT	A	SS	Anchorage	200 18 J	9.4	**			61,194	0	0	36,125	97,319	15,571
11-5053	13583	Fishery Biologist IV	FT	A	SS	Juneau	205 20 F	12.0				90,720	0	0	50,519	141,239	141,239
11-5055	29980	Program Coordinator II	FT	A	GP	Juneau	99 20 N	12.0				99,696	4,036	0	53,314	157,046	
11-5069	29104	Data Processing Tech I	FT	A	GP	Juneau	205 13 A	8.0	**			28,424	1,153	98	22,290	51,965	38,974
11-5073	13590	Fisheries Geneticist I	FT	A	GP	Anchorage	200 17 B / C	12.0				56,656	2,293	0	38,280	97,229	56,393
11-5087	29981	Program Coordinator II	FT	A	GP	Juneau	205 20 K / L	12.0				91,302	3,696	0	50,382	145,380	
11-5089	13597	Fish Pathologist	FT	A	SS	Anchorage	200 20 J / K	12.0				90,545	0	0	50,458	141,003	141,003
11-5099	13599	Administrative Assistant II	FT	A	GP	Juneau	205 14 E / F	12.0				52,586	2,129	0	36,859	91,574	
11-5106	13603	Fishery Biologist IV	FT	A	SS	Juneau	205 20 E / F	12.0				89,636	0	0	50,140	139,776	139,776
11-5107	13604	Fishery Biologist II	FT	A	GP	Juneau	205 16 G / J	12.0				66,161	2,678	0	41,600	110,439	110,439
11-5112	13607	Fisheries Scientist I	FT	A	SS	Anchorage	200 22 K / L	12.0				106,222	0	6,617	58,245	171,084	171,084
11-5121	29983	Analyst/Programmer V	FT	A	SS	Juneau	205 22 A / B	12.0				89,907	0	0	50,235	140,142	39,240
11-5158	13630	Fisheries Geneticist II	FT	A	SS	Anchorage	200 19 C / D	12.0				73,932	0	0	44,655	118,587	10,673
11-5163	13631	Fisheries Scientist I	FT	A	SS	Juneau	99 22 S	12.0				142,724	0	0	68,082	210,806	210,806
11-5177	13637	F&W Technician III	FT	A	GP	Anchorage	200 11 D	10.7	**			35,404	1,490	1,528	29,388	67,810	25,090
11-5242	13669	F&W Technician IV	PT	A	GP	Petersburg	200 13 B	1.0	*			3,550	156	0	2,781	6,487	
11-5249	29984	Asst Dir Dept Fish & Game	FT	A	SS	Juneau	99 22 K	12.0				110,493	0	0	57,425	167,918	
11-5265	13685	Analyst/Programmer IV	FT	A	GP	Anchorage	200 20 J / K	12.0				86,143	3,743	6,319	50,787	146,992	146,992
11-5271	13689	Fisheries Scientist I	FT	A	SS	Juneau	99 22 N	12.0				121,617	0	4,000	62,708	188,325	103,579
11-5281	13694	Laboratory Technician	FT	A	GP	Anchorage	200 13 A	12.0				40,608	1,644	0	32,675	74,927	
11-5289	13700	Fishery Biologist I	PT	A	GP	Juneau	205 14 G / J	11.0				53,048	2,208	1,506	36,005	92,767	47,311
11-5299	13708	Fishery Biologist I	FT	A	GP	Juneau	205 14 D	12.0				50,448	2,042	0	36,112	88,602	51,389
11-5312	13719	Fishery Biologist III	FT	A	GP	Juneau	99 18 Q	12.0				95,948	3,884	0	52,005	151,837	151,837

Note: If a position is split, an asterisk (*) will appear in the Split/Count column. If the split position is also counted in the component, two asterisks (**) will appear in this column.
 [No valid job title] appearing in the Job Class Title indicates that the PCN has an invalid class code or invalid range for the class code effective date of this scenario.

Personal Services Expenditure Detail (1445)

Department of Fish and Game

Scenario: FY2020 Governor Amended (15636)
 Component: Statewide Fisheries Management (2171)
 RDU: Commercial Fisheries (143)

Status	PCN	Tracking ID	Job Class Title	Time Status	Retire Code	Barg Unit	Location	Salary Sched	Range / Steps	Comp Months	Split / Count	Annual Salaries	COLA	Premium Pay	Annual Benefits	Total Costs	UGF Amount
11-5352	13740	F&W Technician III	PT	A	GP	Juneau	205	11 G	11.0			41,712	1,688	0	23,045	66,445	6,645
11-5355	13742	Microbiologist II	FT	A	GP	Anchorage	200	16 A / B	12.0			51,249	2,075	0	36,392	89,716	89,716
11-5360	13745	Fishery Biologist III	FT	A	GP	Juneau	205	18 J / K	12.0			78,719	3,186	0	45,987	127,892	127,892
11-5364	13749	Fish and Game Coordinator	FT	A	SS	Juneau	205	22 J	12.0			107,016	0	0	56,211	163,227	163,227
11-5366	13751	Fishery Biologist II	FT	A	GP	Juneau	205	16 J / K	12.0			67,526	2,733	0	42,077	112,336	80,882
11-5369	29116	F&W Technician III	PT	A	GP	Juneau	205	11 K	11.0			44,847	1,861	1,129	33,009	80,846	14,552
11-6139	13805	Fishery Biologist III	FT	A	SS	Juneau	205	18 E / F	12.0			77,265	0	0	45,819	123,084	35,694
11-7018	13821	Fishery Biologist I	PT	A	GP	Anchorage	200	14 C	5.5	**		21,446	952	0	15,966	38,364	28,773
11-7019	13822	Accounting Tech II	FT	A	SS	Anchorage	600	14 D	4.0	*		17,834	0	0	12,506	30,340	22,755
11-7021	13824	Fisheries Geneticist I	FT	A	GP	Anchorage	200	17 K / L	12.0			70,954	2,872	0	43,275	117,101	59,722
11-7025	13826	Fishery Biologist III	FT	A	GP	Juneau	205	18 K	12.0			79,236	3,207	0	46,167	128,610	96,458
11-7033	29985	Program Coordinator II	FT	A	GP	Juneau	205	20 G / J	12.0			87,720	3,551	0	49,131	140,402	23,868
11-7036	13831	Publications Spec III	FT	A	GP	Juneau	205	19 K / L	12.0			87,101	3,526	0	48,915	139,542	139,542
11-7041	13834	F&W Technician III	PT	A	GP	Juneau	205	11 C	4.0	**		13,344	540	0	10,825	24,709	
11-7042	13835	F&W Technician III	PT	A	GP	Juneau	205	11 A	3.5	**		11,029	478	2,474	10,110	24,091	13,250
11-7043	13836	Fishery Biologist III	FT	P	GG	Anchorage	99	18 N / O	12.0			83,958	3,399	0	47,817	135,174	117,601
11-7054	13839	Biometrician I	FT	A	GP	Juneau	205	17 A / B	12.0			57,619	2,535	5,000	40,363	105,517	52,759
11-7055	13840	F&W Technician III	PT	A	GP	Juneau	205	11 A / B	11.0			35,629	1,448	149	29,447	66,673	34,003
11-7080	13852	Fisheries Geneticist I	FT	A	GP	Anchorage	200	17 A	12.0			53,292	2,157	0	37,105	92,554	
11-7112	13858	Fishery Biologist III	FT	A	GP	Anchorage	200	18 L	11.0	**		71,423	2,891	0	41,898	116,212	82,511

Note: If a position is split, an asterisk (*) will appear in the Split/Count column. If the split position is also counted in the component, two asterisks (**) will appear in this column.
 [No valid job title] appearing in the Job Class Title indicates that the PCN has an invalid class code or invalid range for the class code effective date of this scenario.

Personal Services Expenditure Detail (1445)

Department of Fish and Game

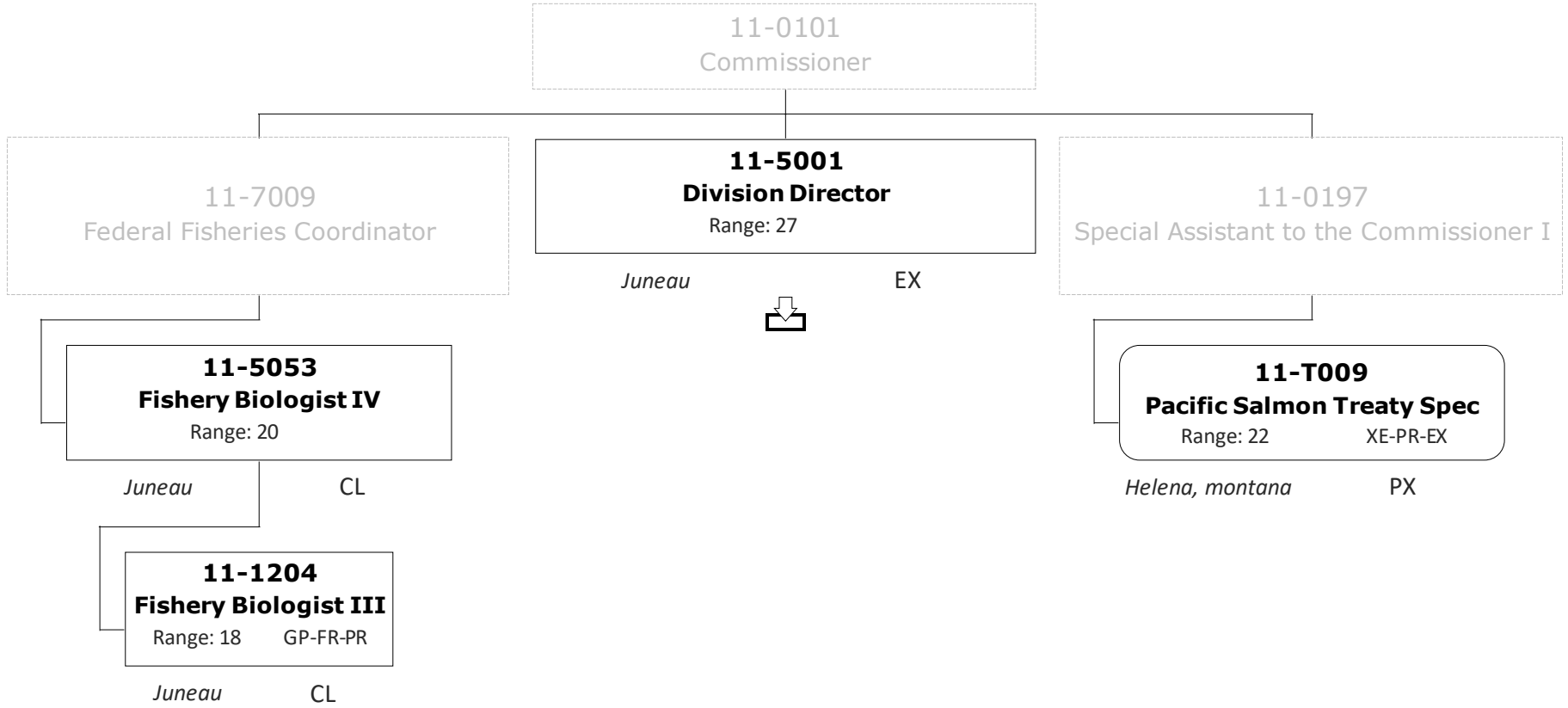
Scenario: FY2020 Governor Amended (15636)
Component: Statewide Fisheries Management (2171)
RDU: Commercial Fisheries (143)

Status	PCN	Tracking ID	Job Class Title	Time Status	Retire Code	Barg Unit	Location	Salary Sched	Range / Steps	Comp Months	Split / Count	Annual Salaries	COLA	Premium Pay	Annual Benefits	Total Costs	UGF Amount
	11-7607	30369	F&W Technician III	PT	A	GP	Anchorage	200	11 D / E	9.0		30,456	1,233	0	24,506	56,195	32,031
													Total Salary Costs:	7,602,057			
													Total COLA:	157,164			
													Total Premium Pay:	125,580			
													Total Benefits:	4,452,915			
													Total Pre-Vacancy:	12,337,716			
													Minus Vacancy Adjustment of 2.71%:	(334,516)			
													Total Post-Vacancy:	12,003,200			
													Plus Lump Sum Premium Pay:	0			
													Personal Services Line 100:	12,003,200			
Total Component Months:				1137.7													

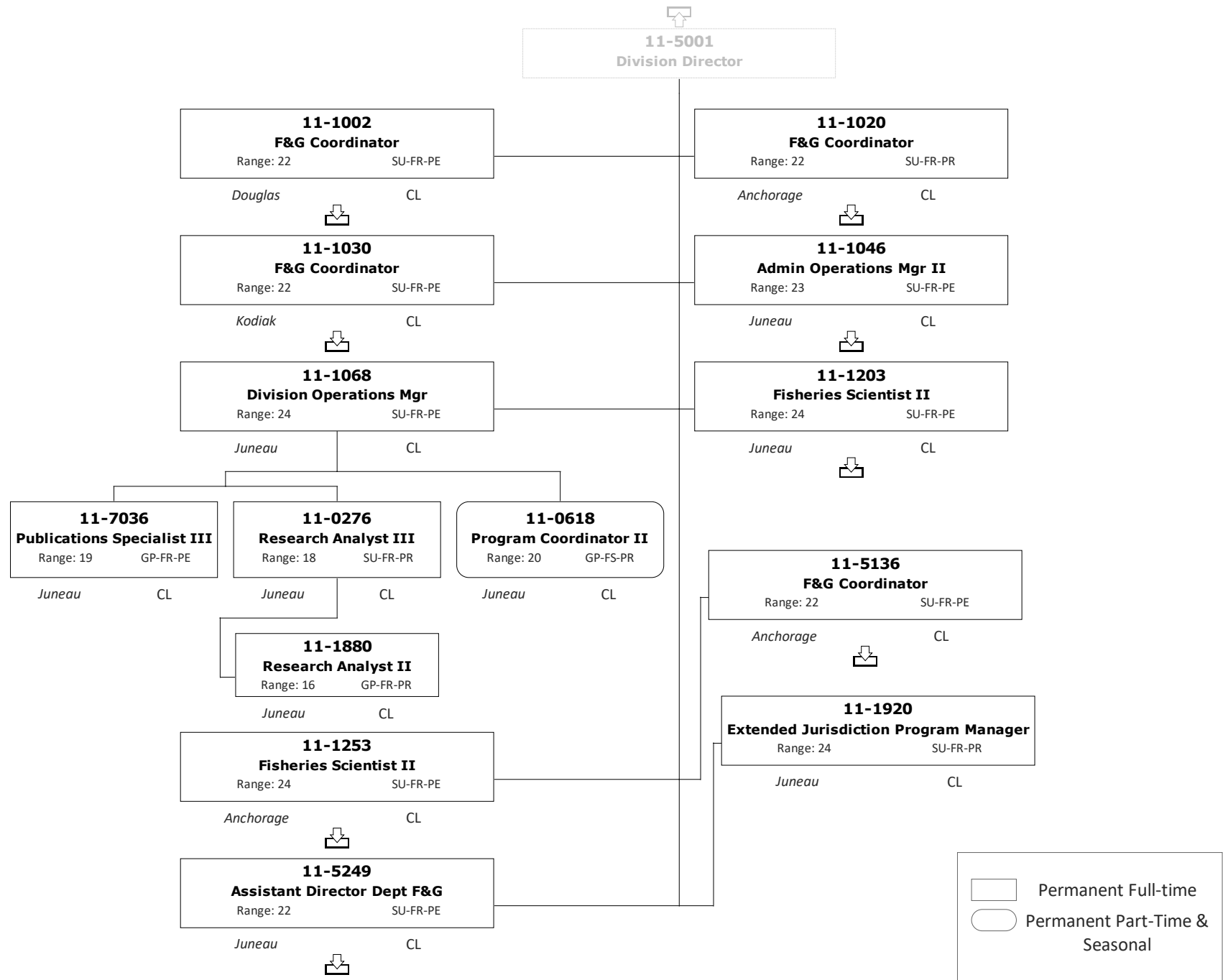
PCN Funding Sources:		Pre-Vacancy	Post-Vacancy	Percent
1002	Federal Receipts	1,137,720	1,106,873	9.22%
1004	General Fund Receipts	7,922,105	7,707,311	64.21%
1005	General Fund/Program Receipts	314,459	305,933	2.55%
1007	Interagency Receipts	405,768	394,766	3.29%
1018	Exxon Valdez Oil Spill Settlement	69,680	67,791	0.56%
1061	Capital Improvement Project Receipts	381,610	371,264	3.09%
1108	Statutory Designated Program Receipts	1,391,814	1,354,078	11.28%
1201	Commercial Fisheries Entry Commission Receipts	714,559	695,185	5.79%
Total PCN Funding:		12,337,716	12,003,200	100.00%

Note: If a position is split, an asterisk (*) will appear in the Split/Count column. If the split position is also counted in the component, two asterisks (**) will appear in this column. [No valid job title] appearing in the Job Class Title indicates that the PCN has an invalid class code or invalid range for the class code effective date of this scenario.

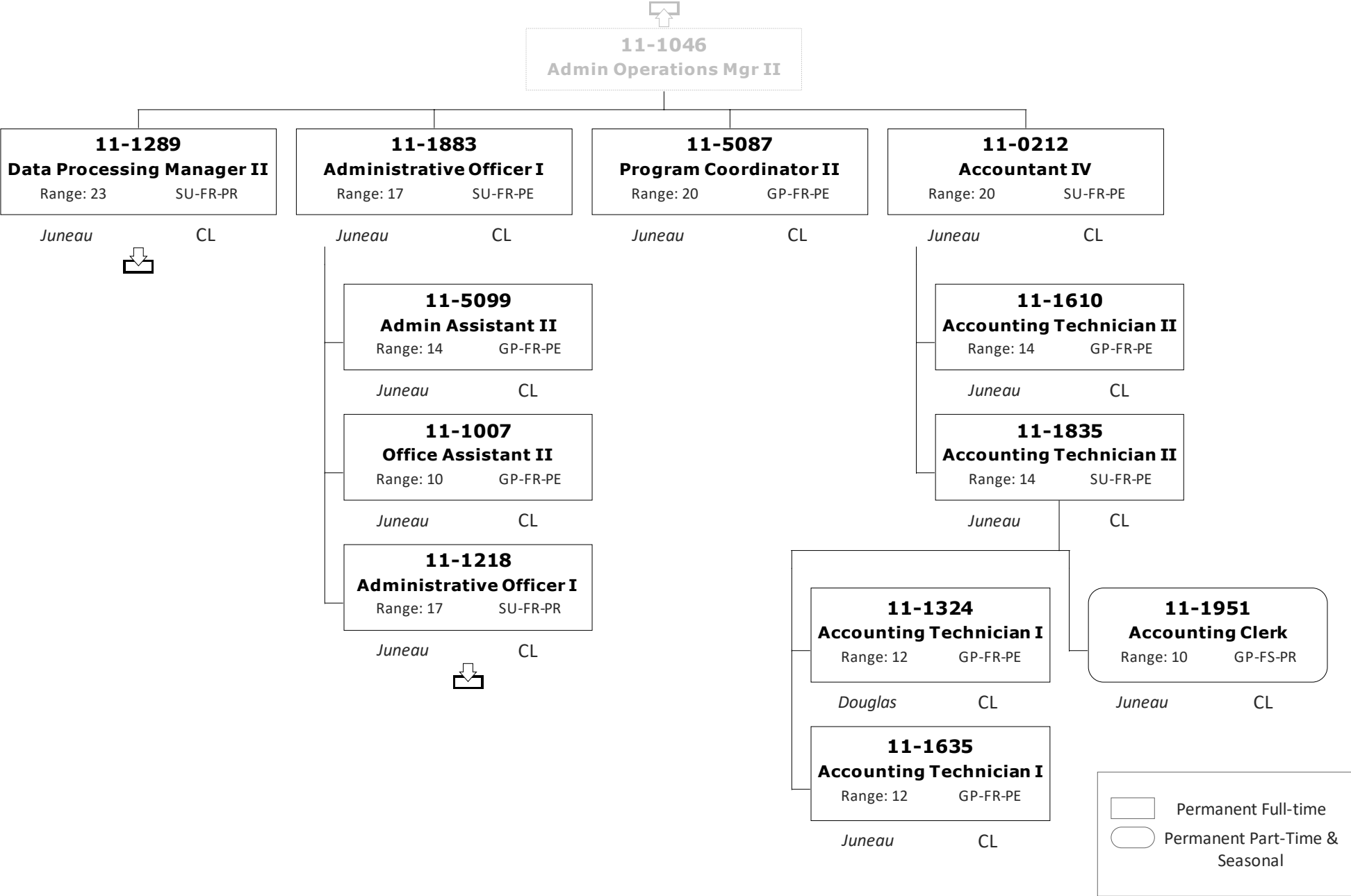
Division of Commercial Fisheries
2171 - Statewide Fish Management



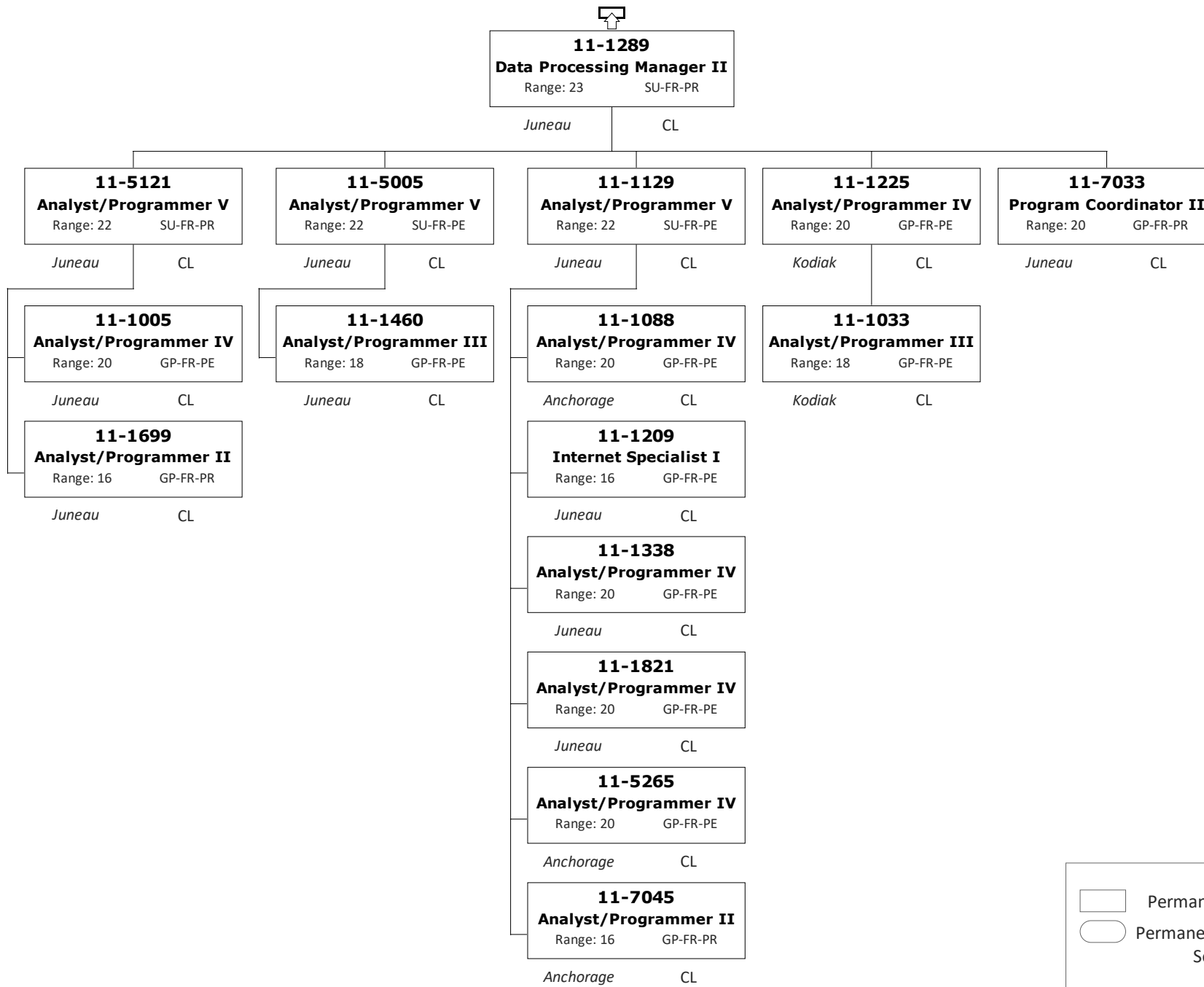
Division of Commercial Fisheries 2171 - Statewide Fish Management



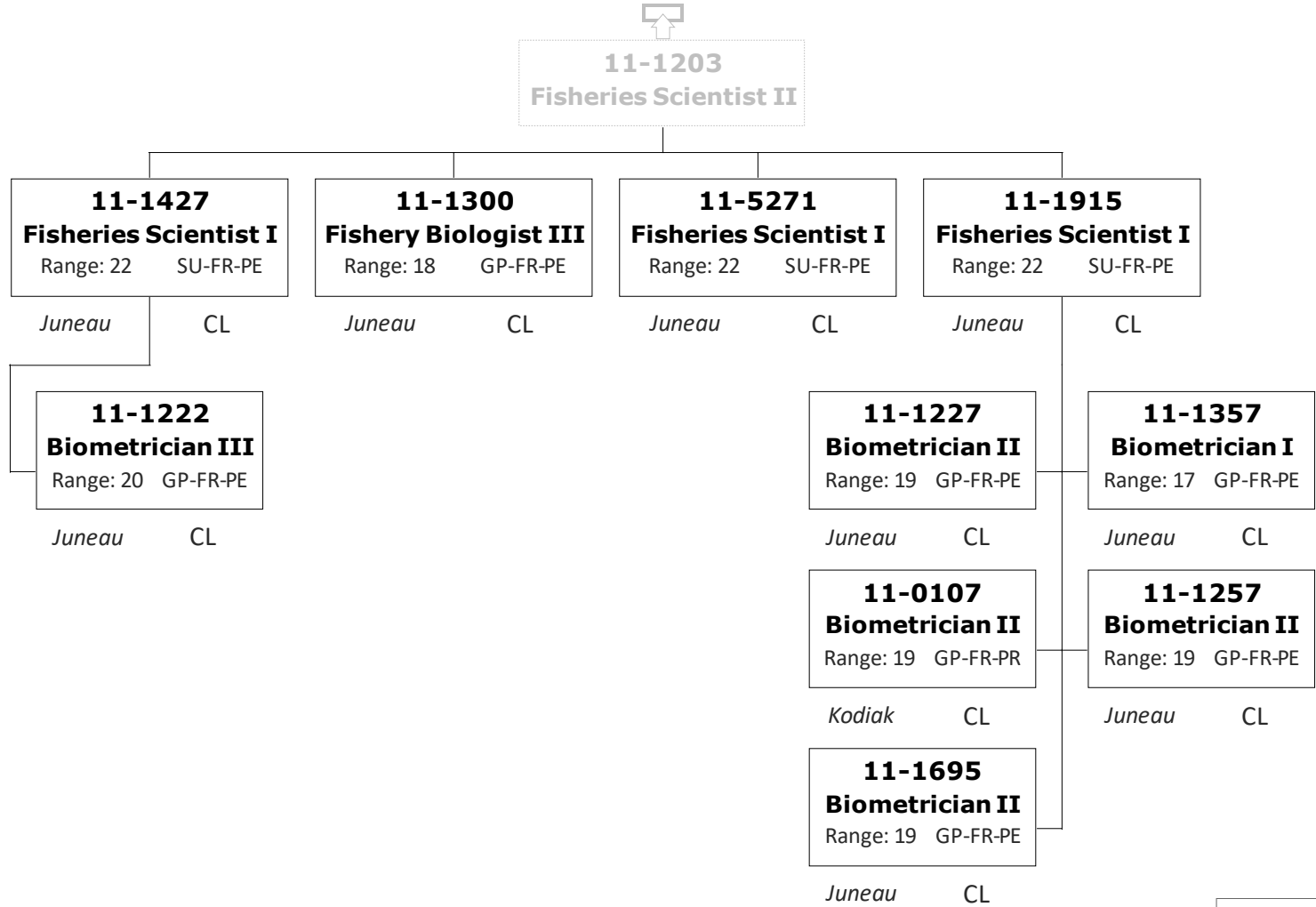
Division of Commercial Fisheries
 2171 - Statewide Fish Management



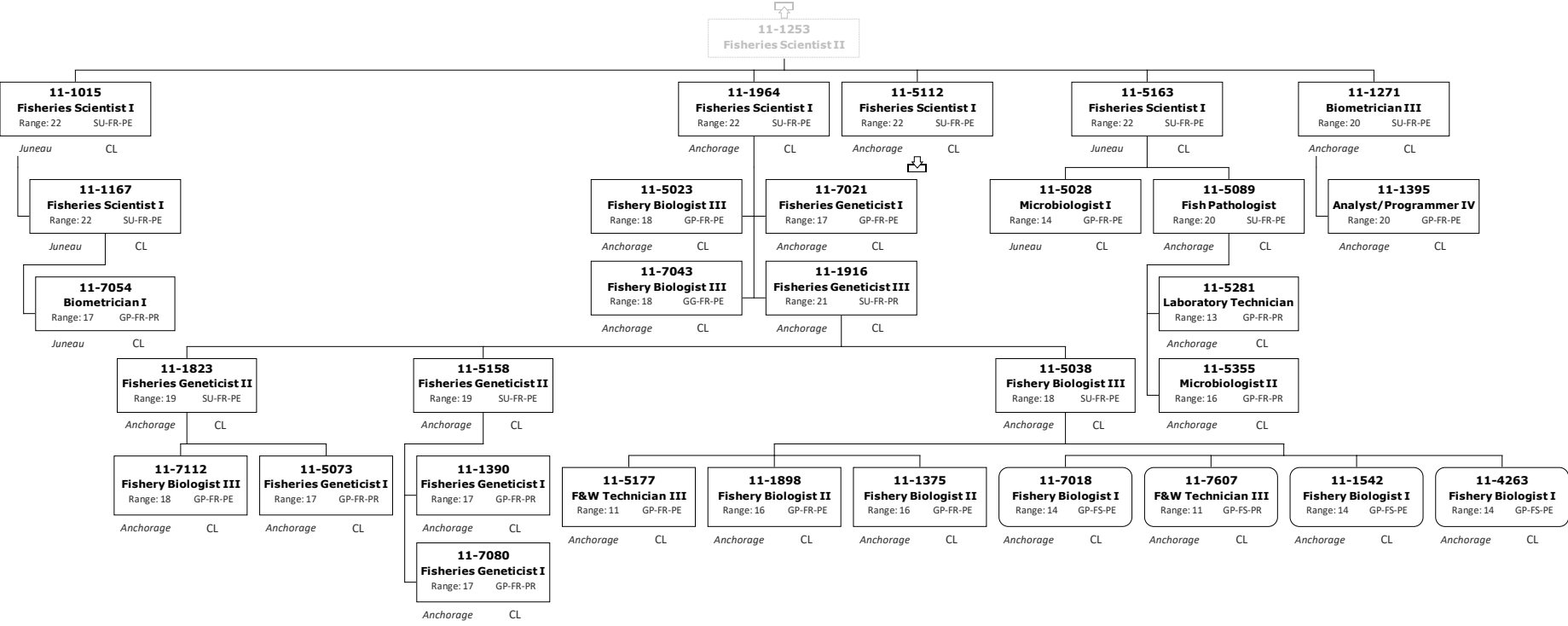
Division of Commercial Fisheries
2171 - Statewide Fisheries Management



Division of Commercial Fisheries
 2171 - Statewide Fish Management

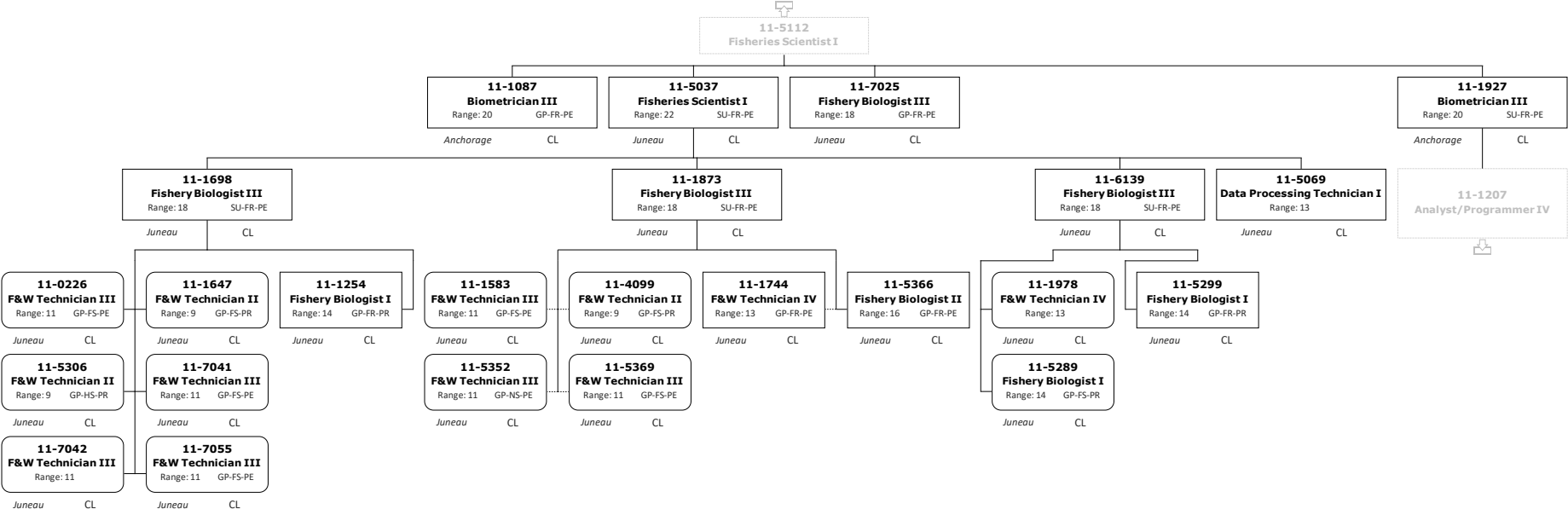


Division of Commercial Fisheries 2171 - Statewide Fish Management



Permanent Full-time
 Permanent Part-Time & Seasonal

Division of Commercial Fisheries 2171 - Statewide Fish Management



Permanent Full-time

Permanent Part-Time & Seasonal

Division of Commercial Fisheries
2171 - Statewide Fish Management

