

**Component Detail (1077)**  
**Department of Fish and Game**

**Component:** Sport Fisheries (464)

Non-Formula Component

**RDU:** Sport Fisheries (145)

IRIS AP Type: FSFO

	FY2018 Actuals (15158)	FY2019 Conference Committee (14954)	FY2019 Authorized (14962)	FY2019 Management Plan (14994)	FY2020 Governor (15610)	FY2020 Governor Amended (15636)	FY2020 Governor vs FY2020 Governor Amended	
1000 Personal Services	22,431.2	25,492.6	25,501.7	25,501.7	26,037.3	25,342.6	-694.7	-2.7%
2000 Travel	567.5	326.7	326.7	326.7	326.7	42.9	-283.8	-86.9%
3000 Services	11,744.5	13,699.3	13,699.3	13,699.3	13,699.3	13,699.3	0.0	0.0%
4000 Commodities	2,327.8	1,993.5	1,993.5	1,993.5	1,993.5	1,993.5	0.0	0.0%
5000 Capital Outlay	338.7	711.5	711.5	711.5	711.5	711.5	0.0	0.0%
7000 Grants, Benefits	0.0	0.0	0.0	0.0	0.0	0.0	0.0	0.0%
8000 Miscellaneous	0.0	0.0	0.0	0.0	0.0	0.0	0.0	0.0%
<b>Totals</b>	<b>37,409.7</b>	<b>42,223.6</b>	<b>42,232.7</b>	<b>42,232.7</b>	<b>42,768.3</b>	<b>41,789.8</b>	<b>-978.5</b>	<b>-2.3%</b>
<b><u>Funding Sources:</u></b>								
1002 Fed Rcpts (Fed)	13,953.3	16,646.5	16,646.5	16,646.5	16,869.8	16,532.4	-337.4	-2.0%
1003 G/F Match (UGF)	498.4	524.5	524.5	524.5	526.2	524.5	-1.7	-0.3%
1004 Gen Fund (UGF)	1,511.9	1,490.5	1,496.6	1,496.6	1,538.1	1,483.1	-55.0	-3.6%
1005 GF/Prgm (DGF)	0.0	0.0	3.0	3.0	0.0	0.0	0.0	0.0%
1007 I/A Rcpts (Other)	315.7	841.0	841.0	841.0	848.3	840.8	-7.5	-0.9%
1024 Fish/Game (Other)	18,621.0	18,459.3	18,459.3	18,459.3	18,677.7	18,311.0	-366.7	-2.0%
1061 CIP Rcpts (Other)	1,010.1	2,128.8	2,128.8	2,128.8	2,166.9	2,128.8	-38.1	-1.8%
1108 Stat Desig (Other)	999.3	1,483.0	1,483.0	1,483.0	1,491.3	1,469.2	-22.1	-1.5%
1199 SFEntAcct (Other)	500.0	500.0	500.0	500.0	500.0	500.0	0.0	0.0%
1223 CharterRLF (DGF)	0.0	150.0	150.0	150.0	150.0	0.0	-150.0	-100.0%
<b><u>Funding Totals:</u></b>								
<b>Unrestricted General (UGF)</b>	<b>2,010.3</b>	<b>2,015.0</b>	<b>2,021.1</b>	<b>2,021.1</b>	<b>2,064.3</b>	<b>2,007.6</b>	<b>-56.7</b>	<b>-2.7%</b>
<b>Designated General (DGF)</b>	<b>0.0</b>	<b>150.0</b>	<b>153.0</b>	<b>153.0</b>	<b>150.0</b>	<b>0.0</b>	<b>-150.0</b>	<b>-100.0%</b>
<b>Other</b>	<b>21,446.1</b>	<b>23,412.1</b>	<b>23,412.1</b>	<b>23,412.1</b>	<b>23,684.2</b>	<b>23,249.8</b>	<b>-434.4</b>	<b>-1.8%</b>
<b>Federal</b>	<b>13,953.3</b>	<b>16,646.5</b>	<b>16,646.5</b>	<b>16,646.5</b>	<b>16,869.8</b>	<b>16,532.4</b>	<b>-337.4</b>	<b>-2.0%</b>
<b><u>Positions:</u></b>								
Permanent Full Time	155	158	158	157	160	161	1	0.6%
Permanent Part Time	148	146	146	147	144	144	0	0.0%
Non Permanent	3	1	1	0	0	0	0	0.0%

**Change Record Detail - Multiple Scenarios with Descriptions (294)**  
**Department of Fish and Game**

**Component:** Sport Fisheries (464)  
**RDU:** Sport Fisheries (145)

Scenario/Change Record Title	Trans Type	Totals	Personal Services	Travel	Services	Commodities	Capital Outlay	Grants, Benefits	Miscellaneous	PFT	Positions PPT	NP
***** Changes From FY2019 Conference Committee To FY2019 Authorized *****												
<b>FY2019 Alaska Sport Fish Enterprise Account Sec12b Ch17 SLA2018 P74 L1 (HB286)</b>												
(Language)	ConfC(L)	500.0	0.0	0.0	500.0	0.0	0.0	0.0	0.0	0	0	0
1199 SFEntAcct		500.0										
<p>(b) After the appropriation made in sec. 23(r) of this Act, the remaining balance of the Alaska sport fishing enterprise account (AS 16.05.130(e)) in the fish and game fund (AS 16.05.100), not to exceed \$500,000, is appropriated to the Department of Fish and Game for sport fish operations for the fiscal year ending June 30, 2019.</p>												
<b>FY2019 Conference Committee</b>												
	ConfCom	41,723.6	25,492.6	326.7	13,199.3	1,993.5	711.5	0.0	0.0	158	146	1
1002 Fed Rcpts		16,646.5										
1003 G/F Match		524.5										
1004 Gen Fund		1,490.5										
1007 I/A Rcpts		841.0										
1024 Fish/Game		18,459.3										
1061 CIP Rcpts		2,128.8										
1108 Stat Desig		1,483.0										
1223 CharterRLF		150.0										
<b>Release Hunting/Fishing Records to Muni Ch17 SLA2018 (HB267) (Sec2 Ch17 SLA2018 P44 L18-19 (HB286))</b>												
	FisNot	9.1	9.1	0.0	0.0	0.0	0.0	0.0	0.0	0	0	0
1004 Gen Fund		6.1										
1005 GF/Prgm		3.0										
<p>Sport fishing business owners and guides are required by statute and regulation to license and register, respectively, with the department before conducting sport fishing or guide services. Further, sport fishing guides are required by regulation to obtain and complete a logbook. Logbooks require information including: Division of Motor Vehicles boat registration or United States Coast Guard documentation number for vessels used to provide guide services; locations where guide services were provided; effort, catch, and harvest by clients, owners, or employees of the sport fishing business or guide, and; other information the department requires. The sport fishing business owner is responsible for reporting logbook information and returning logbooks completed by the guide it employs to the department as specified in the logbook. The purpose of the logbook program is to provide information necessary for the management or conservation of the fishery resource or regulation of the guide industry.</p> <p>Under Alaska Statutes, logbook information is confidential and may not be released by the department. This bill would require the release of certain records related to big game hunters, guided hunts, and guided sport fishing activities to municipalities for verification of taxes payable.</p>												
<b>Subtotal</b>		<b>42,232.7</b>	<b>25,501.7</b>	<b>326.7</b>	<b>13,699.3</b>	<b>1,993.5</b>	<b>711.5</b>	<b>0.0</b>	<b>0.0</b>	<b>158</b>	<b>146</b>	<b>1</b>
***** Changes From FY2019 Authorized To FY2019 Management Plan *****												
<b>Change Fish &amp; Wildlife Technician III (11-4311) from Full-Time to Part-Time</b>												
	PosAdj	0.0	0.0	0.0	0.0	0.0	0.0	0.0	0.0	-1	1	0
<p>Change (11-4311) Fish &amp; Wildlife Technician III, range 14, located in Homer, from Full-Time to Part-Time. This change is needed for Chinook salmon</p>												

**Change Record Detail - Multiple Scenarios with Descriptions (294)**  
**Department of Fish and Game**

**Component:** Sport Fisheries (464)  
**RDU:** Sport Fisheries (145)

Scenario/Change Record Title	Trans Type	Totals	Personal Services	Travel	Services	Commodities	Capital Outlay	Grants, Benefits	Miscellaneous	Positions		NP
										PFT	PPT	
broodstock collection project and program oversight.												
<b>Delete Long Term Vacant Librarian I (11-N16146)</b>												
	PosAdj	0.0	0.0	0.0	0.0	0.0	0.0	0.0	0.0	0	0	-1
Delete PCN 11-N16146, non-perm Librarian I, range 16, located in Anchorage. The authority has been allocated to support other existing positions.												
<b>Subtotal</b>		<b>42,232.7</b>	<b>25,501.7</b>	<b>326.7</b>	<b>13,699.3</b>	<b>1,993.5</b>	<b>711.5</b>	<b>0.0</b>	<b>0.0</b>	<b>157</b>	<b>147</b>	<b>0</b>
***** Changes From FY2019 Management Plan To FY2020 Governor Amended *****												
<b>Reverse Sport Fishing Enterprise Account for Sport Fish Operations</b>												
(Language)	OTI	-500.0	0.0	0.0	-500.0	0.0	0.0	0.0	0.0	0	0	0
1199 SFEntAcct		-500.0										
Reverse language section appropriation made in SLA2018.												
<b>Reverse Release Hunting/Fishing Records to Muni Ch17 SLA2018 (HB267) (Sec2 Ch17 SLA2018 P44 L18-19 (HB286))</b>												
	FNOTI	-9.1	-9.1	0.0	0.0	0.0	0.0	0.0	0.0	0	0	0
1004 Gen Fund		-6.1										
1005 GF/Prgm		-3.0										
Reverse Release Hunting/Fishing Records to Municipalities.												
<b>Restore Sport Fishing Enterprise Account for Sport Fish Operations</b>												
(Language)	IncM	500.0	0.0	0.0	500.0	0.0	0.0	0.0	0.0	0	0	0
1199 SFEntAcct		500.0										
The department may use up to \$500.0 from the Sportfish Enterprise Account for sportfish operations.												
<b>Change Fishery Biologists from Part-Time to Full-Time</b>												
	PosAdj	0.0	0.0	0.0	0.0	0.0	0.0	0.0	0.0	3	-3	0
Change PCN (11-4096) Part-Time, Fishery Biologist I, range 14, located in Fairbanks to Full-Time. The change is needed due to the expansion of the anadromous fish research program in Fairbanks.												
Change PCN (11-4190) Part-Time, Fishery Biologist I, range 14, located in Soldotna to Full-Time. The change is needed to absorb the heavier workload within the region.												
Change (PCN 11-4193) Part-Time, Fish and Wildlife Technician III, range 11, located in Fairbanks to a Full-Time Fishery Biologist II, range 16 located in Glennallen. The change is needed to serve as the Assistant Area Management Biologist for the Upper Copper Management Area in Glennallen.												
<b>Delete Charter Revolving Loan Fund Authority No Longer Available</b>												
	Dec	-150.0	-150.0	0.0	0.0	0.0	0.0	0.0	0.0	0	0	0
1223 CharterRLF		-150.0										

**Change Record Detail - Multiple Scenarios with Descriptions (294)**  
**Department of Fish and Game**

**Component:** Sport Fisheries (464)  
**RDU:** Sport Fisheries (145)

Scenario/Change Record Title	Trans Type	Totals	Personal Services	Travel	Services	Commodities	Capital Outlay	Grants, Benefits	Miscellaneous	Positions		
										PFT	PPT	NP
<p>This decrement removes authority received in FY2019 as a increment to help partially cover the loss of guide license revenue from the sport fish logbook program. The Charter Revolving Loan Fund is an unsustainable fund source.</p>												
<b>Transfer Fishery Biologist II (11-1874) from Southeast Region Fisheries Management</b>												
Trin		0.0	0.0	0.0	0.0	0.0	0.0	0.0	0.0	1	0	0
<p>Transfer (11-1874) Full Time, Fishery Biologist II, range 16, located in Juneau, from the Southeast Region Fisheries Management component to facilitate regional programmatic needs in the Southeast Regional office.</p>												
<b>Executive Branch 50% Travel Reduction</b>												
Dec		-283.8	0.0	-283.8	0.0	0.0	0.0	0.0	0.0	0	0	0
1002 Fed Rcpts		-114.1										
1004 Gen Fund		-7.4										
1007 I/A Rcpts		-0.2										
1024 Fish/Game		-148.3										
1108 Stat Desig		-13.8										
<p>50% executive branch travel reduction based on actual costs of travel in FY2018. Exceptions were made to travel essential to public safety, health, and disaster management.</p>												
<b>Totals</b>		<b>41,789.8</b>	<b>25,342.6</b>	<b>42.9</b>	<b>13,699.3</b>	<b>1,993.5</b>	<b>711.5</b>	<b>0.0</b>	<b>0.0</b>	<b>161</b>	<b>144</b>	<b>0</b>

## Personal Services Expenditure Detail (1445)

### Department of Fish and Game

Scenario: FY2020 Governor Amended (15636)  
 Component: Sport Fisheries (464)  
 RDU: Sport Fisheries (145)

Status	PCN	Tracking ID	Job Class Title	Time Status	Retire Code	Barg Unit	Location	Salary Sched	Range / Steps	Comp Months	Split / Count	Annual Salaries	COLA	Premium Pay	Annual Benefits	Total Costs	UGF Amount
	11-0253	12235	Accounting Tech III	FT	A	GP	Juneau	205	16 B / C	12.0		55,304	2,239	0	37,808	95,351	
	11-0420	12280	Fish & Game Program Tech	FT	A	GP	Kotzebue	260	12 C	2.4	*	12,994	526	0	8,237	21,757	
	11-1125	12403	F&W Technician III	PT	A	GP	Yakutat	200	11 A	10.5		31,514	1,390	2,837	20,088	55,829	
	11-1232	29046	Fishery Biologist I	PT	A	GP	Juneau	205	14 A	3.0	*	11,376	625	3,152	9,697	24,850	
	11-1365	12552	Habitat Biologist III	FT	A	GP	Anchorage	200	18 B / C	12.0		59,801	2,421	0	39,379	101,601	
	11-1443	12610	Fish & Game Program Tech	PT	A	GP	Haines	200	12 G	2.6	*	10,036	406	0	7,512	17,954	
	11-1445	12611	Fish & Game Program Tech	PT	A	GG	Wrangell	99	12 M	4.4	*	19,670	846	1,031	10,621	32,168	
	11-1454	12614	F&W Technician III	PT	A	GP	Petersburg	200	11 F / F	11.5		40,103	1,691	1,674	23,453	66,921	25,430
	11-1465	12619	Office Assistant II	PT	A	GP	Homer	200	10 C	6.0	*	18,006	729	0	15,535	34,270	
	11-1502	12647	F&W Technician III	PT	A	GP	Yakutat	200	11 A / A	4.5		13,506	570	576	11,853	26,505	
	11-1627	12759	F&W Technician II	PT	A	GP	Anchorage	200	9 B / B	2.5		6,848	328	1,264	6,686	15,126	
	11-1655	12780	F&W Technician II	PT	A	GP	Glennallen	200	9 D	5.5		15,967	656	250	14,139	31,012	
	11-1672	12790	F&W Technician III	PT	A	GP	Haines	200	11 A / A	10.0		30,014	1,271	1,385	18,672	51,342	
	11-1706	12807	F&W Technician III	PT	A	GP	Haines	200	11 D / D	5.0		16,372	699	906	9,887	27,864	
	11-1713	12811	F&W Technician IV	PT	A	GP	Petersburg	200	13 A	3.5	*	11,862	550	3,130	10,630	26,172	
	11-1724	12821	F&W Technician III	PT	A	GP	Palmer	200	11 A / A	11.0		33,011	1,336	0	28,480	62,827	
	11-1735	12831	F&W Technician III	PT	A	GP	Petersburg	200	11 A	3.0	*	9,170	397	1,410	6,007	16,984	
	11-1736	12832	Fishery Biologist II	FT	A	SS	Fairbanks	203	16 J	12.0		70,296	0	0	43,385	113,681	
	11-1788	12856	F&W Technician II	PT	A	GP	Palmer	200	9 E / E	11.0		33,011	1,364	692	28,722	63,789	7,655
	11-1793	12858	F&W Technician III	PT	A	GP	Soldotna	200	11 F / F	11.5		40,112	1,690	1,627	32,299	75,728	
	11-1822	29085	F&W Technician III	PT	A	GP	Juneau	205	11 A	1.5	*	4,760	279	2,638	4,895	12,572	
	11-1863	12891	F&W Technician II	PT	A	GP	Yakutat	200	9 B	2.0		5,478	268	1,138	3,852	10,736	
	11-1867	12893	F&W Technician II	PT	A	GP	Sitka	205	9 B	5.0		14,381	693	2,730	9,829	27,633	27,633
	11-1869	12894	F&W Technician III	PT	A	GP	Wrangell	200	11 F	10.5		36,616	1,746	6,529	23,160	68,051	22,035
TI	11-1874	12899	Fishery Biologist II	FT	A	SS	Juneau	205	16 A	12.0		58,200	0	0	39,160	97,360	97,360
	11-1936	12950	F&W Technician III	PT	A	GP	Craig	200	11 F	4.5		15,693	766	3,219	10,073	29,751	17,800
	11-1943	12957	F&W Technician II	PT	A	GP	Wrangell	200	9 A / A	1.5		3,983	335	4,289	5,201	13,808	
	11-1960	12972	Fishery Biologist III	FT	A	SS	Anchorage	99	18 O	12.0		100,637	0	7,263	56,520	164,420	
	11-2072	13039	Fish & Game Program Tech	FT	A	GP	Cordova	211	12 F / G	6.0	*	25,710	1,041	0	18,226	44,977	

Note: If a position is split, an asterisk (\*) will appear in the Split/Count column. If the split position is also counted in the component, two asterisks (\*\*) will appear in this column.  
 [No valid job title] appearing in the Job Class Title indicates that the PCN has an invalid class code or invalid range for the class code effective date of this scenario.

## Personal Services Expenditure Detail (1445)

### Department of Fish and Game

Scenario: FY2020 Governor Amended (15636)  
 Component: Sport Fisheries (464)  
 RDU: Sport Fisheries (145)

Status	PCN	Tracking ID	Job Class Title	Time Status	Retire Code	Barg Unit	Location	Salary Sched	Range / Steps	Comp Months	Split / Count	Annual Salaries	COLA	Premium Pay	Annual Benefits	Total Costs	UGF Amount
11-2116		13071	Fish & Game Program Tech	FT	A	GP	Glennallen	200	12 A / B	6.0	*	19,401	786	0	16,022	36,209	
11-2118		13073	Fish & Game Program Tech	FT	N	GP	King Salmon	250	12 C	2.4	*	12,385	420	0	5,299	18,104	
11-4001		13245	Division Director	FT	A	XE	Anchorage	99	27 J	12.0		136,027	0	0	66,009	202,036	
11-4003		13246	Fish and Game Coordinator	FT	A	SS	Juneau	99	22 K	12.0		122,232	0	0	61,526	183,758	
11-4005		13248	Habitat Biologist III	FT	A	GP	Anchorage	200	18 C / D	12.0		62,816	2,543	0	40,432	105,791	
11-4006		13249	Admin Operations Mgr I	FT	A	SS	Juneau	205	22 M / M	12.0		117,780	0	0	59,971	177,751	
11-4008		13251	Fishery Biologist III	FT	A	SS	Juneau	205	18 F	12.0		79,452	0	0	46,583	126,035	
11-4010		13253	Fish and Game Coordinator	FT	A	SS	Anchorage	99	22 M	12.0		130,642	0	0	64,464	195,106	
11-4011		13254	Fishery Biologist IV	FT	A	SS	Anchorage	99	20 L	12.0		102,892	0	0	54,770	157,662	
11-4014		13255	Fishery Biologist III	FT	A	SS	Palmer	99	18 K	12.0		86,423	0	0	49,018	135,441	
11-4019		13258	Fish and Game Coordinator	FT	A	SS	Anchorage	200	22 K / K	12.0		105,228	0	0	55,586	160,814	
11-4020		13259	Fishery Biologist III	FT	A	SS	Soldotna	200	18 A / A	12.0		63,852	0	0	41,134	104,986	
11-4021		13260	Accounting Tech I	FT	A	GP	Juneau	205	12 A / A	12.0		40,032	1,620	0	32,473	74,125	
11-4022		13261	Fishery Biologist IV	FT	A	SS	Sitka	99	20 L	12.0		111,551	0	0	57,795	169,346	
11-4023		13262	Fishery Biologist III	FT	A	SS	Soldotna	200	18 N / N	12.0		88,776	0	0	49,840	138,616	
11-4024		13263	Fishery Biologist III	FT	A	SS	Anchorage	200	18 K / K	12.0		80,664	0	0	47,006	127,670	
11-4025		13264	Biometrician III	FT	A	GP	Anchorage	99	20 O	12.0		103,704	4,198	0	54,714	162,616	
11-4026		13265	Fish and Game Coordinator	FT	A	SS	Fairbanks	203	22 M / N	12.0		119,316	0	0	60,507	179,823	
11-4028		13267	Fishery Biologist III	FT	A	GP	Fairbanks	99	18 L	12.0		89,197	3,612	25	49,656	142,490	
11-4029		13268	Fishery Biologist III	FT	A	SS	Fairbanks	203	18 A / A	12.0		65,772	0	0	41,804	107,576	
11-4031		13270	Fishery Biologist III	FT	A	SS	Kodiak	211	18 E / F	12.0		84,000	0	0	48,171	132,171	
11-4032		13271	Fishery Biologist III	FT	A	SS	Juneau	205	18 K	12.0		84,696	0	100	48,450	133,246	
11-4035		13272	F&W Technician II	PT	A	GP	Anchorage	200	9 C / D	10.5		30,146	1,410	4,684	28,345	64,585	64,585
11-4036		13273	Administrative Officer I	FT	A	SS	Fairbanks	99	17 J	12.0		80,544	0	0	46,964	127,508	
11-4041		13276	F&W Technician IV	PT	A	GP	Fairbanks	99	13 K	11.0		54,131	2,559	9,091	39,033	104,814	
11-4042		13277	Division Operations Manager	FT	A	SS	Juneau	205	24 J / J	12.0		122,496	0	0	61,618	184,114	
11-4043		13278	Fishery Biologist III	FT	A	GP	Fairbanks	203	18 A / A	12.0		59,052	2,390	0	39,117	100,559	
11-4044		13279	Fishery Biologist III	FT	A	SS	Glennallen	99	18 K	12.0		86,423	0	0	49,018	135,441	
11-4045		13280	Fishery Biologist II	FT	A	SS	Palmer	200	16 F / J	12.0		66,553	0	0	42,077	108,630	

Note: If a position is split, an asterisk (\*) will appear in the Split/Count column. If the split position is also counted in the component, two asterisks (\*\*) will appear in this column.  
 [No valid job title] appearing in the Job Class Title indicates that the PCN has an invalid class code or invalid range for the class code effective date of this scenario.

## Personal Services Expenditure Detail (1445)

### Department of Fish and Game

Scenario: FY2020 Governor Amended (15636)  
 Component: Sport Fisheries (464)  
 RDU: Sport Fisheries (145)

Status	PCN	Tracking ID	Job Class Title	Time Status	Retire Code	Barg Unit	Location	Salary Sched	Range / Steps	Comp Months	Split / Count	Annual Salaries	COLA	Premium Pay	Annual Benefits	Total Costs	UGF Amount
	11-4046	13281	Fish & Game Program Tech	FT	A	GP	Anchorage	200	12 K / L	12.0		50,793	2,079	575	36,433	89,880	
	11-4047	13282	Fish & Game Program Tech	FT	A	GP	Soldotna	200	12 K	6.0	**	24,924	1,102	2,302	18,755	47,083	
	11-4050	13284	Fishery Biologist III	FT	A	SS	Sitka	99	18 L	12.0		94,598	0	160	51,929	146,687	
	11-4052	13286	Asst Dir Dept Fish & Game	FT	A	SS	Juneau	205	22 L / L	12.0		114,072	0	0	58,676	172,748	
	11-4053	13287	Fish & Game Program Tech	FT	A	GP	Kodiak	211	12 E / F	6.0	**	24,630	999	50	17,866	43,545	
	11-4056	13289	F&W Technician III	PT	A	GP	Anchorage	200	11 A / A	10.5		31,511	1,511	5,818	29,218	68,058	
	11-4058	13291	Accountant III	FT	A	SS	Juneau	205	18 J / K	12.0		83,364	0	0	47,949	131,313	
	11-4062	13292	F&W Technician II	PT	A	GP	Soldotna	200	9 A / A	1.7		4,515	235	1,294	4,649	10,693	
	11-4063	13293	Asst Dir Dept Fish & Game	FT	A	SS	Anchorage	99	22 L / M	12.0		117,492	0	0	59,870	177,362	
	11-4066	13295	Accounting Tech I	FT	A	GP	Anchorage	200	12 A / A	12.0		38,124	1,543	0	31,807	71,474	
	11-4067	13296	F&W Technician II	PT	A	GP	Wrangell	200	9 D / E	10.5		31,068	1,312	1,339	27,499	61,218	61,218
	11-4069	13297	Fishery Biologist II	FT	A	SS	Fairbanks	99	16 N	12.0		84,180	0	0	48,234	132,414	
	11-4070	13298	Administrative Assistant II	FT	A	GP	Fairbanks	203	14 J	12.0		57,192	2,493	4,399	40,004	104,088	
	11-4071	13299	Administrative Officer I	FT	A	SS	Anchorage	200	17 C / D	12.0		64,980	0	0	41,528	106,508	
	11-4073	13301	Fishery Biologist IV	FT	A	SS	Juneau	99	20 K	12.0		100,838	0	0	54,053	154,891	
	11-4075	13302	Fishery Biologist III	FT	A	SS	Fairbanks	203	18 K / L	12.0		84,880	0	0	48,479	133,359	
	11-4076	13303	Fishery Biologist IV	FT	A	SS	Fairbanks	203	20 M	12.0		101,172	0	0	54,170	155,342	
	11-4078	13304	F&W Technician III	FT	A	GP	Juneau	205	11 A / A	12.0		37,812	1,766	5,817	33,730	79,125	
	11-4079	13305	Fishery Biologist II	PT	A	SS	Delta Junction	200	16 J / J	11.5		65,401	0	0	40,890	106,291	
	11-4080	13306	F&W Technician III	PT	A	GP	Palmer	200	11 A / A	5.0		15,005	607	0	12,946	28,558	15,421
	11-4088	13308	F&W Technician II	PT	A	GP	Juneau	205	9 A / A	9.0		25,097	1,020	98	15,734	41,949	
	11-4089	13309	Fishery Biologist I	PT	A	GP	Homer	200	14 F / G	10.0		43,996	1,945	4,052	32,192	82,185	13,971
	11-4092	13311	F&W Technician II	PT	A	GP	Juneau	205	9 J	5.0		17,388	763	1,457	10,435	30,043	
	11-4095	13314	F&W Technician III	PT	A	GP	Fairbanks	203	11 B / C	7.5		24,164	1,053	1,843	20,641	47,701	
	11-4096	13315	Fishery Biologist I	FT	A	SS	Fairbanks	203	14 A / A	12.0		49,752	0	7,686	38,893	96,331	
	11-4098	13317	Fishery Biologist IV	FT	A	SS	Anchorage	99	20 L	12.0		102,881	0	0	54,767	157,648	
	11-4103	13321	Research Analyst II	FT	A	GP	Juneau	99	16 K	12.0		71,948	2,975	1,550	44,163	120,636	49,461
	11-4106	13323	F&W Technician IV	PT	A	GP	Fairbanks	203	13 E / F	11.0		44,772	1,931	2,936	33,614	83,253	
	11-4107	13324	Fishery Biologist III	FT	A	SS	Haines	200	18 K	12.0		80,664	0	300	47,111	128,075	128,075

Note: If a position is split, an asterisk (\*) will appear in the Split/Count column. If the split position is also counted in the component, two asterisks (\*\*) will appear in this column.  
 [No valid job title] appearing in the Job Class Title indicates that the PCN has an invalid class code or invalid range for the class code effective date of this scenario.

## Personal Services Expenditure Detail (1445)

### Department of Fish and Game

Scenario: FY2020 Governor Amended (15636)  
 Component: Sport Fisheries (464)  
 RDU: Sport Fisheries (145)

Status	PCN	Tracking ID	Job Class Title	Time Status	Retire Code	Barg Unit	Location	Salary Sched	Range / Steps	Comp Months	Split / Count	Annual Salaries	COLA	Premium Pay	Annual Benefits	Total Costs	UGF Amount
11-4109		13325	Fishery Biologist III	FT	A	SS	Haines	99	18 L	12.0		86,839	0	0	49,163	136,002	
11-4110		13326	Fishery Biologist I	FT	A	GP	Ketchikan	200	14 A / A	12.0		43,332	1,768	333	33,743	79,176	
11-4113		13328	Fishery Biologist II	FT	A	SS	Juneau	205	16 J / J	12.0		71,652	0	1,333	44,324	117,309	117,309
11-4114		13329	F&W Technician II	PT	A	GP	Ketchikan	200	9 B	4.5		12,329	509	252	11,328	24,418	
11-4115		13330	Fishery Biologist II	FT	A	SS	Juneau	99	16 N	12.0		85,716	0	0	48,771	134,487	
11-4119		13332	Biometrician II	FT	A	GP	Fairbanks	203	19 E / F	12.0		74,295	3,007	0	44,442	121,744	
11-4120		13333	Publications Tech II	FT	A	GP	Fairbanks	203	13 L	12.0		56,916	2,304	0	38,371	97,591	
11-4121		13334	Fish & Game Program Tech	PT	A	GP	Palmer	200	12 C / D	11.0		38,004	1,538	0	30,224	69,766	
11-4122		13335	F&W Technician II	PT	A	GP	Valdez	211	9 A / A	3.5		10,318	429	276	9,093	20,116	20,116
11-4123		13336	F&W Technician III	PT	A	GP	Glennallen	200	11 C	5.5		17,523	0	2,756	15,558	35,837	
11-4124		13337	F&W Technician III	PT	A	GP	Homer	200	11 M / B	6.0		18,510	776	658	15,941	35,885	9,240
11-4125		13338	Fishery Biologist I	FT	A	GP	Soldotna	200	14 A / A	12.0		43,332	1,754	0	33,626	78,712	
11-4128		13339	F&W Technician III	PT	A	GP	Ketchikan	200	11 C / D	11.5		36,875	1,611	2,932	31,624	73,042	
11-4129		13340	F&W Technician III	PT	A	GP	Chitina	200	11 B / C	4.0		12,708	514	0	10,602	23,824	
11-4130		13341	F&W Technician III	PT	A	GP	Palmer	200	11 A / A	9.0		27,009	1,121	692	23,544	52,366	
11-4131		13342	Fishery Biologist II	FT	A	GP	Soldotna	200	16 F / F	12.0		59,376	2,403	0	39,230	101,009	25,252
11-4132		13343	F&W Technician II	PT	A	GP	Dillingham	237	9 B / B	5.0		18,760	1,128	9,109	17,439	46,436	
11-4133		13344	F&W Technician III	PT	A	GP	Soldotna	200	11 A / A	10.5		31,511	1,313	917	27,506	61,247	
11-4135		13346	Fish & Game Program Tech	FT	A	GP	Juneau	205	12 A / A	12.0		40,032	1,683	1,539	33,011	76,265	
11-4136		13347	Fishery Biologist III	FT	A	SS	Anchorage	200	18 L	12.0		83,280	0	0	47,920	131,200	20,992
11-4137		13348	Fishery Biologist II	FT	A	SS	Glennallen	99	16 L	12.0		76,584	0	0	45,581	122,165	
11-4138		13349	F&W Technician II	PT	A	GP	Glennallen	200	9 C / C	1.0		2,819	134	486	2,695	6,134	
11-4139		13350	F&W Technician II	PT	A	GP	Palmer	200	9 B / C	10.5		29,560	1,238	1,022	26,861	58,681	58,681
11-4141		13352	F&W Technician II	PT	A	GP	Palmer	200	9 C	3.0		8,457	363	520	7,758	17,098	
11-4142		13353	F&W Technician II	PT	A	GP	Kodiak	211	9 C	3.5		10,952	473	726	9,472	21,623	21,623
11-4143		13354	F&W Technician II	PT	A	GP	Palmer	200	9 D	3.0		8,709	374	525	7,848	17,456	
11-4144		13355	F&W Technician II	PT	A	GP	Palmer	200	9 A / A	4.5		11,952	571	2,145	11,858	26,526	
11-4146		13357	F&W Technician II	PT	A	GP	Soldotna	200	9 B / B	3.5		9,587	430	1,041	9,105	20,163	
11-4147		13358	Office Assistant I	FT	A	GP	Anchorage	200	8 E / E	12.0		33,828	1,369	0	30,306	65,503	

Note: If a position is split, an asterisk (\*) will appear in the Split/Count column. If the split position is also counted in the component, two asterisks (\*\*) will appear in this column.  
 [No valid job title] appearing in the Job Class Title indicates that the PCN has an invalid class code or invalid range for the class code effective date of this scenario.



## Personal Services Expenditure Detail (1445)

### Department of Fish and Game

Scenario: FY2020 Governor Amended (15636)  
 Component: Sport Fisheries (464)  
 RDU: Sport Fisheries (145)

Status	PCN	Tracking ID	Job Class Title	Time Status	Retire Code	Barg Unit	Location	Salary Sched	Range / Steps	Comp Months	Split / Count	Annual Salaries	COLA	Premium Pay	Annual Benefits	Total Costs	UGF Amount
11-4148		13359	Fishery Biologist I	PT	A	GP	Palmer	200	14 F / F	11.0		47,333	1,964	1,191	33,899	84,387	
11-4149		13360	F&W Technician II	PT	A	GP	Soldotna	200	9 C	3.0		8,457	359	416	7,722	16,954	
11-4150		13361	F&W Technician III	PT	A	GP	Palmer	200	11 J	4.5		16,925	844	3,921	14,215	35,905	
11-4151		13362	F&W Technician III	PT	A	GP	Palmer	200	11 G / G	5.0		18,055	902	4,224	15,486	38,667	
11-4152		13363	F&W Technician III	PT	A	GP	Palmer	99	11 L	5.5		22,879	1,066	3,465	17,677	45,087	
11-4154		13365	F&W Technician III	PT	A	GP	Homer	200	11 B	3.6	**	11,171	530	3,005	10,499	25,205	18,400
11-4155		13366	F&W Technician III	PT	A	GP	Soldotna	99	11 O	11.0		51,102	2,069	0	34,799	87,970	
11-4157		13368	F&W Technician III	PT	A	GP	Seward	200	11 F / F	3.5		12,208	553	1,453	10,165	24,379	24,379
11-4158		13369	Fishery Biologist I	FT	A	GP	Palmer	200	14 K	12.0		57,324	2,323	75	38,540	98,262	
11-4159		13370	Fishery Biologist II	FT	A	SS	Palmer	200	16 J	12.0		68,244	0	0	42,668	110,912	
11-4160		13371	Fishery Biologist II	FT	A	SS	Soldotna	99	16 L	12.0		76,211	0	0	45,451	121,662	10,134
11-4163		13374	F&W Technician III	PT	A	GP	Palmer	200	11 F / G	7.5		26,345	1,066	0	20,759	48,170	12,043
11-4164		13375	Fishery Biologist III	FT	A	SS	Palmer	200	18 C / C	12.0		68,304	0	0	42,689	110,993	27,748
11-4165		13376	Fishery Biologist II	FT	A	SS	Soldotna	200	16 F / F	12.0		66,108	0	0	41,922	108,030	
11-4166		13377	Fishery Biologist II	FT	A	SS	Soldotna	200	16 E / F	12.0		65,262	0	59	41,647	106,968	
11-4168		13378	Office Assistant I	PT	A	GP	Soldotna	200	8 B	3.0		7,725	313	0	7,321	15,359	
11-4169		13379	Fish & Game Program Tech	FT	A	GP	Dillingham	99	12 N	12.0		79,122	3,203	0	46,128	128,453	
11-4170		13380	Fishery Biologist II	FT	A	SS	Kodiak	99	16 N	12.0		90,626	0	0	50,486	141,112	
11-4171		13381	F&W Technician III	PT	A	GP	Homer	200	11 E / E	10.5		35,532	1,438	0	28,590	65,560	
11-4172		13382	Fishery Biologist IV	FT	A	SS	Anchorage	99	20 K	12.0		96,034	0	0	52,375	148,409	
11-4175		13385	F&W Technician II	PT	A	GP	Homer	200	9 B / C	3.5		9,667	500	2,696	9,711	22,574	
11-4176		13386	F&W Technician III	PT	A	GP	Glennallen	200	11 A / A	6.0		18,006	830	2,493	16,405	37,734	
11-4177		13387	Fishery Biologist IV	FT	P	GP	Homer	200	20 D / D	12.0		72,768	2,946	0	43,908	119,622	
11-4178		13388	Fish & Game Program Tech	FT	A	GP	Anchorage	200	12 C / D	12.0		40,972	1,659	0	32,802	75,433	
11-4183		13393	Research Analyst III	FT	A	GP	Anchorage	200	18 L	12.0		77,916	3,154	0	45,706	126,776	
11-4184		13394	F&W Technician III	PT	A	GP	Glennallen	200	11 D / E	2.0		6,713	321	1,209	5,849	14,092	
11-4185		13395	F&W Technician III	PT	A	GP	Fairbanks	203	11 F	5.5		19,762	907	2,653	16,304	39,626	
11-4186		13396	Fishery Biologist II	FT	A	SS	Fairbanks	203	16 A / A	12.0		57,096	0	50	38,791	95,937	
11-4187		13397	Biometrician IV	FT	A	SS	Anchorage	600	22 O	12.0		126,485	0	0	63,011	189,496	

Note: If a position is split, an asterisk (\*) will appear in the Split/Count column. If the split position is also counted in the component, two asterisks (\*\*) will appear in this column.  
 [No valid job title] appearing in the Job Class Title indicates that the PCN has an invalid class code or invalid range for the class code effective date of this scenario.

## Personal Services Expenditure Detail (1445)

### Department of Fish and Game

Scenario: FY2020 Governor Amended (15636)  
 Component: Sport Fisheries (464)  
 RDU: Sport Fisheries (145)

Status	PCN	Tracking ID	Job Class Title	Time Status	Retire Code	Barg Unit	Location	Salary Sched	Range / Steps	Comp Months	Split / Count	Annual Salaries	COLA	Premium Pay	Annual Benefits	Total Costs	UGF Amount
11-4190	13399	Fishery Biologist I	FT	A	GP	Soldotna	200	14	A	12.0		43,332	1,754	0	33,626	78,712	
11-4191	13400	Office Assistant II	FT	A	GP	Anchorage	200	10	B / C	12.0		35,620	1,442	0	30,932	67,994	
11-4193	13402	Fishery Biologist II	FT	A	GP	Glennallen	200	16	A / A	12.0		49,776	2,015	0	35,877	87,668	
11-4195	13403	F&W Technician III	PT	A	GP	Soldotna	200	11	L	11.5		46,104	2,170	7,505	36,446	92,225	
11-4196	13404	Fishery Biologist III	FT	A	SS	Craig	99	18	L	12.0		868,399	0	0	277,076	1,145,475	
11-4199	13406	Fishery Biologist III	FT	A	SS	Yakutat	200	18	B / C	12.0		67,938	0	0	42,561	110,499	
11-4200	13407	Fishery Biologist II	FT	A	SS	Dillingham	237	16	B / B	12.0		78,816	0	0	46,361	125,177	
11-4201	13408	F&W Technician III	PT	A	GP	Delta Junction	200	11	F / G	3.3	**	11,916	483	0	9,247	21,646	
11-4203	13410	Biometrician III	FT	A	GP	Anchorage	200	20	J / J	12.0		83,544	3,382	0	47,672	134,598	
11-4205	13411	Fishery Biologist II	FT	A	SS	Palmer	200	16	F / F	12.0		66,108	0	0	41,922	108,030	
11-4206	13412	F&W Technician III	PT	A	GP	Homer	200	11	A / A	5.0		15,005	657	1,229	13,375	30,266	
11-4207	13413	Fisheries Scientist II	FT	A	SS	Anchorage	99	24	N / O	12.0		144,788	0	0	68,676	213,464	
11-4208	13414	Habitat Biologist II	FT	A	GP	Anchorage	200	16	C / D	12.0		53,626	2,171	0	37,222	93,019	11,934
11-4210	13416	F&W Technician II	PT	A	GP	Dillingham	237	9	A / B	1.5		5,628	263	865	4,579	11,335	
11-4211	13417	F&W Technician II	PT	A	GP	Craig	200	9	B	4.5		12,329	571	1,770	8,392	23,062	
11-4212	13418	F&W Technician II	PT	A	GP	Palmer	200	9	B / C	1.0		2,819	142	690	2,767	6,418	
11-4213	13419	F&W Technician II	PT	A	GP	Soldotna	200	9	A / B	3.3		9,039	397	768	8,510	18,714	
11-4214	13420	F&W Technician II	PT	A	GP	Soldotna	200	9	C / C	2.7		7,611	334	650	7,046	15,641	
11-4215	13421	F&W Technician III	PT	A	GP	Ketchikan	200	11	C / D	5.0		17,900	737	300	10,209	29,146	
11-4217	13422	F&W Technician III	PT	A	GP	Palmer	200	11	D / D	5.5		18,007	851	3,022	15,820	37,700	
11-4221	13424	Fishery Biologist IV	FT	A	SS	Anchorage	99	20	N	12.0		106,757	0	0	56,121	162,878	
11-4223	13425	Administrative Assistant II	FT	A	GP	Juneau	205	14	B / C	12.0		47,580	1,926	0	35,110	84,616	
11-4224	13426	Fishery Biologist III	FT	A	SS	Palmer	200	18	L	12.0		83,280	0	0	47,920	131,200	
11-4226	13427	Analyst/Programmer III	FT	A	GP	Anchorage	200	18	A / A	12.0		57,336	2,321	0	38,518	98,175	
11-4228	13429	Office Assistant II	FT	A	GP	Anchorage	200	10	A / A	12.0		33,828	1,369	0	30,306	65,503	
11-4229	13430	F&W Technician III	PT	A	GP	Juneau	205	11	B	4.0		12,955	524	0	7,607	21,086	
11-4232	13432	Fishery Biologist III	FT	A	SS	Dillingham	99	18	L	12.0		123,444	0	0	61,949	185,393	
11-4235	13434	Fishery Biologist III	FT	A	SS	Fairbanks	203	18	L / M	12.0		87,640	0	0	49,443	137,083	
11-4237	13436	F&W Technician III	PT	A	GP	Fairbanks	203	11	B / C	6.0		19,632	795	0	16,103	36,530	

Note: If a position is split, an asterisk (\*) will appear in the Split/Count column. If the split position is also counted in the component, two asterisks (\*\*) will appear in this column.  
 [No valid job title] appearing in the Job Class Title indicates that the PCN has an invalid class code or invalid range for the class code effective date of this scenario.

## Personal Services Expenditure Detail (1445)

### Department of Fish and Game

Scenario: FY2020 Governor Amended (15636)  
 Component: Sport Fisheries (464)  
 RDU: Sport Fisheries (145)

Status	PCN	Tracking ID	Job Class Title	Time Status	Retire Code	Barg Unit	Location	Salary Sched	Range / Steps	Comp Months	Split / Count	Annual Salaries	COLA	Premium Pay	Annual Benefits	Total Costs	UGF Amount
11-4239		13438	Fishery Biologist III	FT	A	SS	Homer	200	18 Q / R	12.0		100,092	0	14	53,797	153,903	
11-4241		13440	F&W Technician II	PT	A	GP	Kodiak	211	9 B / C	10.0		30,890	1,289	954	26,532	59,665	59,665
11-4242		13441	F&W Technician II	PT	A	GP	Dillingham	237	9 A / A	1.5		5,459	248	671	4,453	10,831	
11-4243		13442	Fishery Biologist III	FT	A	SS	Anchorage	200	18 F / F	12.0		75,672	0	300	45,367	121,339	
11-4246		13443	Accounting Tech I	FT	A	GP	Anchorage	200	12 F / G	12.0		46,194	1,870	0	34,626	82,690	
11-4247		13444	F&W Technician II	PT	A	GP	Fairbanks	203	9 B / B	4.0		11,284	562	2,604	11,015	25,465	
11-4248		13445	F&W Technician II	PT	A	GP	Fairbanks	203	9 A / A	6.0		16,416	712	1,163	15,386	33,677	
11-4249		13446	F&W Technician III	PT	A	GP	Soldotna	200	11 B / C	10.5		32,945	1,334	0	27,687	61,966	
11-4250		13447	Fishery Biologist II	FT	A	SS	Fairbanks	203	16 E / F	12.0		66,834	0	0	42,175	109,009	
11-4252		13449	F&W Technician II	PT	A	GP	Palmer	200	9 C / D	5.5		15,589	694	1,561	14,465	32,309	
11-4253		13450	F&W Technician III	PT	A	GP	Soldotna	200	11 J	10.5		39,491	1,900	7,449	32,575	81,415	
11-4254		13451	Fishery Biologist III	FT	A	GP	Fairbanks	99	18 L	12.0		83,268	3,371	0	47,576	134,215	
11-4255		13452	Fishery Biologist I	PT	A	GP	Fairbanks	203	14 A	10.0		37,190	1,505	0	28,399	67,094	
11-4256		13453	Fishery Biologist I	PT	A	GP	Anchorage	200	14 D / E	9.0		36,181	1,509	1,108	19,959	58,757	58,757
11-4257		13454	F&W Technician II	PT	A	GP	Yakutat	200	9 B	4.0		10,959	495	1,264	7,351	20,069	
11-4258		13455	Fish & Game Program Tech	FT	A	GP	Sitka	99	12 K	12.0		54,305	2,283	2,090	38,189	96,867	
11-4262		13457	Program Coordinator II	FT	A	SS	Juneau	205	20 J	12.0		93,672	0	0	51,550	145,222	
11-4265		13460	Administrative Assistant II	FT	A	GP	Anchorage	200	14 C / D	12.0		47,328	1,916	0	35,022	84,266	
11-4266		13461	F&W Technician II	PT	A	GP	Juneau	205	9 C	4.0		11,840	592	2,787	8,191	23,410	
11-4267		13462	Research Analyst III	FT	A	GP	Anchorage	200	18 K / K	12.0		75,468	3,055	0	44,851	123,374	
11-4269		13464	Fishery Biologist III	FT	A	SS	Ketchikan	200	18 K / L	12.0		81,209	0	0	47,197	128,406	
11-4270		13465	Fish & Game Program Tech	FT	A	GP	Ketchikan	200	12 D / E	12.0		42,471	1,784	1,609	33,887	79,751	
11-4271		13466	Administrative Officer II	FT	A	SS	Anchorage	200	19 K / L	12.0		88,209	0	0	49,642	137,851	
11-4272		13467	F&W Technician II	PT	A	GP	Sitka	205	9 F / G	10.5		34,201	1,407	568	20,234	56,410	
11-4273		13468	F&W Technician II	PT	A	GP	Sitka	205	9 C / D	10.5		31,658	1,302	509	27,415	60,884	60,884
11-4274		13469	F&W Technician II	PT	A	GP	Ketchikan	200	9 C	4.5		12,687	545	787	11,640	25,659	10,264
11-4275		13470	F&W Technician II	PT	A	GP	Ketchikan	200	9 C / D	4.5		12,729	547	790	11,656	25,722	9,088
11-4277		13472	Office Assistant II	FT	A	GP	Anchorage	200	10 G / G	12.0		40,608	1,644	0	32,675	74,927	
11-4278		13473	Biometrician II	FT	A	GP	Soldotna	200	19 K	12.0		80,664	3,265	0	46,666	130,595	

Note: If a position is split, an asterisk (\*) will appear in the Split/Count column. If the split position is also counted in the component, two asterisks (\*\*) will appear in this column.  
 [No valid job title] appearing in the Job Class Title indicates that the PCN has an invalid class code or invalid range for the class code effective date of this scenario.

## Personal Services Expenditure Detail (1445)

### Department of Fish and Game

Scenario: FY2020 Governor Amended (15636)  
 Component: Sport Fisheries (464)  
 RDU: Sport Fisheries (145)

Status	PCN	Tracking ID	Job Class Title	Time Status	Retire Code	Barg Unit	Location	Salary Sched	Range / Steps	Comp Months	Split / Count	Annual Salaries	COLA	Premium Pay	Annual Benefits	Total Costs	UGF Amount
11-4279		13474	F&W Technician II	PT	A	GP	Fairbanks	203	9 B	7.0		19,747	882	2,043	18,397	41,069	
11-4284		13477	F&W Technician III	PT	A	GP	Kodiak	211	11 A / A	6.5		21,652	945	1,683	18,167	42,447	
11-4285		13478	F&W Technician II	PT	A	GP	Palmer	200	9 D	5.0		14,515	777	4,688	14,412	34,392	
11-4286		13479	F&W Technician III	PT	A	GP	Palmer	200	11 D / D	11.0		36,014	1,580	3,022	30,585	71,201	
11-4288		13481	F&W Technician II	PT	A	GP	Palmer	200	9 J	5.0		16,555	770	2,456	14,345	34,126	
11-4289		13482	Fishery Biologist II	FT	A	SS	Homer	200	16 B / C	12.0		59,288	0	107	39,577	98,972	
11-4292		13485	F&W Technician II	PT	A	GP	Palmer	200	9 B / C	9.5		26,781	1,177	2,286	24,791	55,035	55,035
11-4293		13486	F&W Technician II	PT	A	GP	Palmer	200	9 C	2.0		5,638	360	3,253	6,187	15,438	
11-4294		29102	Habitat Biologist III	FT	A	GP	Anchorage	200	18 B / C	12.0		60,991	2,477	200	39,864	103,532	8,283
11-4296		13489	F&W Technician III	PT	A	GP	Haines	200	11 G	7.5		27,081	1,272	4,332	16,751	49,436	
11-4297		13490	F&W Technician II	PT	A	GP	Homer	200	9 A / A	7.5		19,920	876	1,723	19,116	41,635	
11-4298		13491	F&W Technician III	PT	A	GP	Homer	200	11 J	7.5		28,208	1,226	2,082	22,137	53,653	
11-4299		13492	F&W Technician III	PT	A	GP	Homer	200	11 B	5.0		15,425	690	1,623	13,659	31,397	
11-4300		13493	F&W Technician II	PT	A	GP	Homer	200	9 B / C	6.0		16,674	708	823	15,357	33,562	
11-4301		13494	F&W Technician II	PT	A	GP	Soldotna	200	9 A / A	4.0		10,624	481	1,248	10,310	22,663	
11-4302		13495	Fishery Biologist I	PT	A	GP	Palmer	200	14 E / E	11.0		45,628	2,234	9,573	36,231	93,666	
11-4303		13496	F&W Technician II	PT	A	GP	Fairbanks	203	9 A / B	10.0		28,210	1,142	0	25,262	54,614	
11-4305		13498	F&W Technician II	PT	A	GP	Soldotna	200	9 D	3.5		10,161	521	2,700	9,885	23,267	
11-4306		13499	F&W Technician II	PT	A	GP	Soldotna	200	9 C / D	9.5		26,991	1,146	1,325	24,529	53,991	53,991
11-4307		13500	F&W Technician II	PT	A	GP	Anchorage	200	9 C / D	11.0		31,261	1,307	1,030	28,229	61,827	
11-4308		13501	F&W Technician II	PT	A	GP	Palmer	200	9 G / J	1.5		4,900	258	1,466	4,535	11,159	
11-4311		13504	Fishery Biologist I	PT	A	GP	Homer	200	14 A / A	6.5		23,472	1,045	2,333	19,029	45,879	
11-4312		13505	Accounting Tech I	FT	A	GP	Fairbanks	203	12 J	12.0		49,728	2,013	0	35,860	87,601	
11-4313		13506	F&W Technician II	PT	A	GP	Haines	200	9 G	5.5		17,473	1,004	7,331	12,901	38,709	
11-4315		13507	Analyst/Programmer IV	FT	A	GP	Anchorage	99	20 L	12.0		92,401	3,740	0	50,766	146,907	
11-4316		13508	Analyst/Programmer V	FT	A	SS	Anchorage	99	22 L	12.0		113,256	0	0	58,391	171,647	
11-4320		13512	Engineer II, Dec	FT	A	SS	Anchorage	99	23 M	12.0		125,923	0	0	62,815	188,738	
11-4321		13513	Fishery Biologist III	FT	A	SS	Juneau	99	18 N	12.0		95,018	0	1,371	52,499	148,888	49,133
11-4322		13514	Fishery Biologist I	FT	A	SS	Ketchikan	200	14 C / D	12.0		53,404	0	7,461	40,090	100,955	100,955

Note: If a position is split, an asterisk (\*) will appear in the Split/Count column. If the split position is also counted in the component, two asterisks (\*\*) will appear in this column.  
 [No valid job title] appearing in the Job Class Title indicates that the PCN has an invalid class code or invalid range for the class code effective date of this scenario.

## Personal Services Expenditure Detail (1445)

### Department of Fish and Game

Scenario: FY2020 Governor Amended (15636)  
 Component: Sport Fisheries (464)  
 RDU: Sport Fisheries (145)

Status	PCN	Tracking ID	Job Class Title	Time Status	Retire Code	Barg Unit	Location	Salary Sched	Range / Steps	Comp Months	Split / Count	Annual Salaries	COLA	Premium Pay	Annual Benefits	Total Costs	UGF Amount
11-4323	13515	F&W Technician II	PT	A	GP	Juneau	205	9 C / D	10.0			29,776	1,288	2,049	18,821	51,934	51,934
11-4324	13516	F&W Technician II	PT	A	GP	Juneau	205	9 D / E	3.5			10,875	577	3,376	7,674	22,502	
11-4326	13518	F&W Technician III	PT	A	GP	Juneau	205	11 F / G	10.5			38,849	1,737	4,057	23,077	67,720	
11-4328	13520	F&W Technician III	PT	A	GP	Haines	200	11 G / J	8.0			29,858	1,546	8,332	19,503	59,239	
11-4329	13521	F&W Technician II	PT	A	GP	Craig	200	9 D / E	6.5			19,013	856	2,123	12,391	34,383	9,971
11-4331	13523	F&W Technician III	PT	A	GP	Ketchikan	200	11 E / E	11.0			37,216	1,507	14	29,954	68,691	
11-4332	13524	F&W Technician II	PT	A	GP	Wrangell	200	9 B	4.0			10,959	546	2,529	7,793	21,827	
11-4333	13525	F&W Technician III	PT	A	GP	Elfin Cove	200	11 K / K	10.5			40,772	1,700	1,220	30,847	74,539	
11-4335	13527	F&W Technician III	PT	A	GP	Anchorage	200	11 A / B	9.0			27,555	1,180	1,585	24,046	54,366	
11-4336	13528	F&W Technician III	PT	A	GP	Sitka	205	11 G	8.0			30,342	1,370	3,501	17,985	53,198	6,384
11-4340	13532	F&W Technician II	PT	A	GP	Wrangell	200	9 E	3.2			9,604	501	2,770	6,788	19,663	
11-4341	13533	Fishery Biologist I	PT	A	SS	Wrangell	200	14 E / F	10.5			48,762	0	4,557	35,101	88,420	25,642
11-4342	13534	Habitat Biologist II	PT	A	GP	Douglas	205	16 L / M	11.0			67,275	2,724	15	40,454	110,468	
11-4344	13536	Habitat Biologist III	FT	A	SS	Douglas	205	18 K / L	12.0			86,185	0	0	48,935	135,120	
11-4345	13537	Project Assistant	FT	A	GP	Anchorage	200	16 A / A	12.0			49,776	2,015	0	35,877	87,668	
11-4346	13538	Fisheries Scientist I	FT	A	SS	Anchorage	200	22 K / K	12.0			105,228	0	0	55,586	160,814	
11-4347	13539	Accounting Tech II	FT	A	GP	Juneau	205	14 J	12.0			58,296	2,360	0	38,853	99,509	
11-4350	13542	Education Assoc III	FT	A	GP	Fairbanks	203	17 L / L	12.0			75,048	3,038	0	44,705	122,791	
11-4351	13543	F&W Technician III	PT	A	GP	Anchorage	200	11 E / F	10.5			36,572	1,556	1,873	29,608	69,609	
11-4352	13544	Publications Spec II	FT	A	GP	Anchorage	200	16 B / C	12.0			53,223	2,154	0	37,081	92,458	
11-4354	13546	Fishery Biologist II	FT	A	GP	Anchorage	200	16 G / J	12.0			63,642	2,576	0	40,720	106,938	
11-4356	13548	Program Coordinator II	FT	A	SS	Anchorage	99	20 N	12.0			107,266	0	0	56,298	163,564	
11-4357	13549	Administrative Assistant II	FT	A	GP	Anchorage	200	14 L	12.0			59,184	2,396	0	39,163	100,743	
11-5006	13552	Fishery Biologist III	FT	A	GP	Anchorage	200	18 E / E	12.0			65,616	2,656	0	41,410	109,682	
11-5010	13555	Fishery Biologist II	FT	A	GP	Juneau	205	16 A / A	12.0			52,260	2,115	0	36,745	91,120	
11-5022	29979	Program Coordinator I	FT	A	GP	Anchorage	200	18 A / B	12.0			59,376	2,403	0	39,230	101,009	
11-5029	13566	Fish & Game Program Tech	PT	A	GP	Yakutat	200	12 C	3.0	*		10,187	431	450	8,338	19,406	
11-5033	13568	Fishery Biologist III	FT	A	SS	Petersburg	200	18 F / J	12.0			78,120	0	150	46,170	124,440	
11-5046	13577	Biometrician II	FT	A	GP	Douglas	205	19 A / B	12.0			66,696	2,700	0	41,787	111,183	

Note: If a position is split, an asterisk (\*) will appear in the Split/Count column. If the split position is also counted in the component, two asterisks (\*\*) will appear in this column.  
 [No valid job title] appearing in the Job Class Title indicates that the PCN has an invalid class code or invalid range for the class code effective date of this scenario.

## Personal Services Expenditure Detail (1445)

### Department of Fish and Game

Scenario: FY2020 Governor Amended (15636)  
 Component: Sport Fisheries (464)  
 RDU: Sport Fisheries (145)

Status	PCN	Tracking ID	Job Class Title	Time Status	Retire Code	Barg Unit	Location	Salary Sched	Range / Steps	Comp Months	Split / Count	Annual Salaries	COLA	Premium Pay	Annual Benefits	Total Costs	UGF Amount
	11-5047	13578	Fishery Biologist IV	FT	A	SS	Fairbanks	203	20 O / P	12.0		110,460	0	0	57,414	167,874	
	11-5072	13589	Information Officer II	FT	A	SS	Fairbanks	99	17 M	12.0		92,810	0	0	51,249	144,059	
	11-5076	13592	Fishery Biologist I	PT	A	GP	Juneau	205	14 B / B	11.0		43,132	1,746	0	23,541	68,419	
	11-5102	13600	Information Officer II	FT	A	SS	Anchorage	200	17 F	12.0		70,704	0	0	43,527	114,231	
	11-5103	29105	Gis Analyst III	FT	A	GP	Anchorage	200	19 G / G	12.0		74,988	3,035	0	44,684	122,707	10,221
	11-5110	13606	Fishery Biologist II	FT	A	SS	Sitka	205	16 M / M	12.0		78,888	0	853	46,684	126,425	
	11-5139	13619	Fish and Game Coordinator	FT	A	SS	Juneau	99	22 M	12.0		123,989	0	100	62,175	186,264	35,390
	11-5145	13622	Publications Spec III	FT	A	GP	Anchorage	200	19 C / C	12.0		65,616	2,656	0	41,410	109,682	
	11-5147	13623	Fishery Biologist IV	FT	A	GP	Juneau	205	20 J / J	12.0		87,720	3,551	0	49,131	140,402	
	11-5149	13624	Maint Spec Bfc Journey I	FT	A	LL	Kasilof	2CC	53 B / C	12.0		54,101	0	0	37,284	91,385	
	11-5157	13629	Fishery Biologist II	FT	A	SS	Juneau	205	16 A / A	12.0		58,200	0	300	39,264	97,764	97,764
	11-5171	13632	F&W Technician II	PT	A	GP	Palmer	200	9 A / A	9.0		23,904	992	612	22,431	47,939	
	11-5173	13634	Habitat Biologist I	FT	A	GP	Fairbanks	99	14 M	12.0		65,952	2,946	6,825	43,911	119,634	
	11-5182	13640	Fishery Biologist II	FT	A	SS	Anchorage	200	16 J	12.0		68,244	0	0	42,668	110,912	
	11-5185	13643	F&W Technician III	PT	A	GP	Anchorage	200	11 B / C	11.0		34,211	1,465	1,992	29,595	67,263	
	11-5188	13645	F&W Technician III	PT	A	GP	Soldotna	200	11 E / F	10.5		36,624	1,545	1,541	29,510	69,220	
	11-5195	13651	Fish & Game Program Tech	FT	A	GP	Petersburg	200	12 O	6.0	*	28,326	1,172	600	19,349	49,447	
	11-5219	13656	F&W Technician III	PT	A	GP	Soldotna	200	11 G / J	3.3		12,336	598	2,432	10,243	25,609	
	11-5233	13664	Fishery Biologist I	FT	A	GP	Kodiak	211	14 E / F	12.0		56,280	2,278	0	38,149	96,707	
	11-5236	13665	F&W Technician III	PT	A	GP	Ketchikan	200	11 C / D	11.0		35,093	1,510	2,199	21,501	60,303	
	11-5238	13666	F&W Technician II	PT	A	GP	Sitka	205	9 B	0.1	*	289	13	0	255	557	
	11-5239	13667	F&W Technician II	PT	A	GP	Soldotna	200	9 A	3.3		8,765	420	1,603	8,706	19,494	
	11-5244	13671	Fishery Biologist II	FT	A	SS	Soldotna	99	16 K	12.0		73,111	0	0	44,368	117,479	
	11-5247	13674	F&W Technician III	PT	A	GP	Fairbanks	203	11 B / C	10.5		33,933	1,390	410	28,175	63,908	
	11-5255	13678	Habitat Biologist IV	FT	A	SS	Anchorage	200	20 K / K	12.0		92,124	0	0	51,009	143,133	120,232
	11-5263	13683	F&W Technician II	PT	A	GP	Fairbanks	203	9 C / D	9.0		26,479	1,100	698	23,361	51,638	51,638
	11-5264	13684	F&W Technician IV	PT	A	GP	Fairbanks	203	13 K	7.0		32,158	1,361	1,461	22,529	57,509	
	11-5268	13686	Fishery Biologist II	FT	A	SS	Homer	200	16 L	12.0		72,756	0	82	44,273	117,111	
	11-5278	13691	Fishery Biologist I	PT	A	GP	Palmer	200	14 J	11.0		50,897	2,268	5,124	36,518	94,807	58,780

Note: If a position is split, an asterisk (\*) will appear in the Split/Count column. If the split position is also counted in the component, two asterisks (\*\*) will appear in this column.  
 [No valid job title] appearing in the Job Class Title indicates that the PCN has an invalid class code or invalid range for the class code effective date of this scenario.

## Personal Services Expenditure Detail (1445)

### Department of Fish and Game

Scenario: FY2020 Governor Amended (15636)  
 Component: Sport Fisheries (464)  
 RDU: Sport Fisheries (145)

Status	PCN	Tracking ID	Job Class Title	Time Status	Retire Code	Barg Unit	Location	Salary Sched	Range / Steps	Comp Months	Split / Count	Annual Salaries	COLA	Premium Pay	Annual Benefits	Total Costs	UGF Amount
11-5283	13695	F&W Technician II	PT	A	GP	Palmer	200	9 B / C	10.5			29,280	1,299	2,801	27,385	60,765	60,765
11-5285	13697	F&W Technician II	PT	A	GP	Palmer	200	9 C	2.5			7,048	316	754	6,577	14,695	
11-5288	13699	F&W Technician III	PT	A	GP	Juneau	205	11 D / E	11.0			38,222	1,714	4,126	23,267	67,329	
11-5291	13702	F&W Technician II	PT	A	GP	Haines	200	9 F / G	7.0			21,914	1,144	6,348	15,265	44,671	
11-5298	13707	F&W Technician III	PT	A	GP	Fairbanks	203	11 J / J	10.0	**		38,740	2,148	10,736	32,691	84,315	
11-5301	13710	F&W Technician II	PT	A	GP	Kodiak	211	9 A / B	5.0			15,200	666	1,262	13,454	30,582	
11-5302	13711	F&W Technician III	PT	A	GP	Palmer	200	11 D / E	5.0			16,480	734	1,659	14,040	32,913	
11-5304	13712	F&W Technician III	PT	A	GP	Glennallen	99	11 K	5.5			22,671	1,240	7,965	19,176	51,052	
11-5311	13718	F&W Technician II	PT	A	GP	Fairbanks	203	9 A / A	10.5			28,728	1,191	689	26,454	57,062	57,062
11-5320	13722	Maint Spec Bfc Journey I	FT	A	LL	Palmer	2BB	53 K	12.0			63,761	0	5	40,660	104,426	
11-5328	13726	F&W Technician II	PT	A	GP	Anchorage	200	9 C	3.5			9,867	463	1,565	9,386	21,281	21,281
11-5337	13731	Administrative Assistant II	FT	A	GP	Anchorage	200	14 J	12.0			55,524	2,248	0	37,885	95,657	
11-5347	13736	F&W Technician II	PT	A	GP	Soldotna	200	9 A / A	2.6			6,906	309	735	6,675	14,625	
11-5361	13746	F&W Technician II	PT	A	GP	Soldotna	200	9 A / B	10.5			28,760	1,195	758	26,490	57,203	57,203
11-6030	13767	Administrative Officer I	FT	A	SS	Juneau	205	17 B / C	12.0			66,652	0	0	42,112	108,764	
11-6052	13778	Habitat Biologist III	FT	A	SS	Anchorage	99	18 N	12.0			93,948	0	0	51,646	145,594	
11-6055	13780	Fish & Game Program Tech	FT	A	GP	Craig	99	12 N	4.0	*		18,288	740	0	12,551	31,579	
11-6077	13785	Gis Analyst II	FT	A	GP	Juneau	205	17 K	12.0			74,100	2,999	0	44,373	121,472	
11-6081	13786	Program Coordinator I	FT	A	GP	Anchorage	200	18 F / F	12.0			68,064	2,755	0	42,265	113,084	
11-6087	29118	Analyst/Programmer IV	FT	A	GP	Anchorage	200	20 L	12.0			89,064	3,605	0	49,600	142,269	
11-6110	13794	Librarian III	FT	A	GP	Anchorage	99	20 M / N	12.0			96,332	3,899	0	52,139	152,370	
11-6119	13796	Gis Analyst II	FT	A	GP	Anchorage	200	17 L	12.0			72,872	2,950	0	43,945	119,767	
11-6140	29119	Habitat Biologist II	FT	A	SS	Anchorage	200	16 M / N	12.0			77,467	0	150	45,942	123,559	
11-6141	13807	Program Coordinator II	FT	A	SS	Homer	99	20 N	12.0			107,268	0	0	56,299	163,567	
11-6156	13815	Fishery Biologist II	FT	A	GP	Fairbanks	203	16 J / J	12.0			65,880	2,667	0	41,502	110,049	
11-7070	13846	Fishery Biologist II	FT	A	GP	Juneau	205	16 K	12.0			69,336	2,811	100	42,744	114,991	
11-7074	13850	Project Assistant	FT	A	GP	Joint Base Elmend	200	16 A / A	12.0			49,784	2,015	0	35,880	87,679	
11-7076	29120	Gis Analyst II	FT	A	GP	Anchorage	200	17 L / L	12.0			72,864	2,949	0	43,942	119,755	
11-7712	13871	Habitat Biologist II	FT	A	GP	Anchorage	200	16 K	12.0			66,036	2,673	0	41,557	110,266	52,928

Note: If a position is split, an asterisk (\*) will appear in the Split/Count column. If the split position is also counted in the component, two asterisks (\*\*) will appear in this column.  
 [No valid job title] appearing in the Job Class Title indicates that the PCN has an invalid class code or invalid range for the class code effective date of this scenario.

**Personal Services Expenditure Detail (1445)**

**Department of Fish and Game**

**Scenario:** FY2020 Governor Amended (15636)  
**Component:** Sport Fisheries (464)  
**RDU:** Sport Fisheries (145)

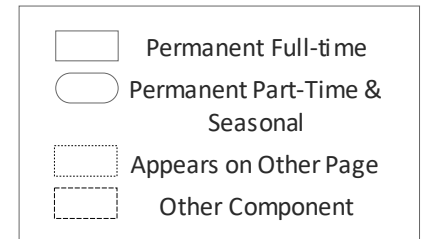
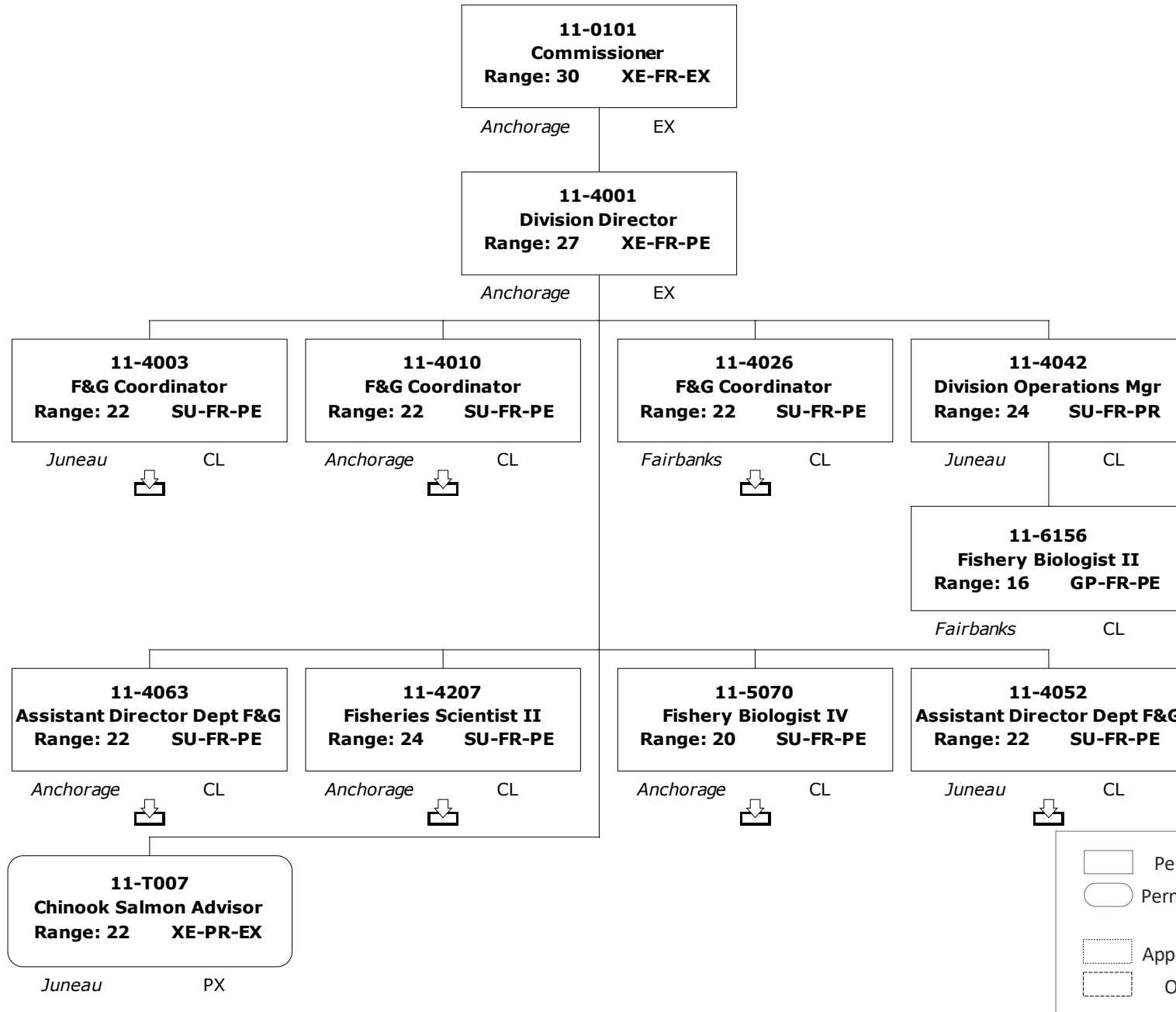
Status	PCN	Tracking ID	Job Class Title	Time Status	Retire Code	Barg Unit	Location	Salary Sched	Range / Steps	Comp Months	Split / Count	Annual Salaries	COLA	Premium Pay	Annual Benefits	Total Costs	UGF Amount
11-7718	13873		Biometrician I	FT	A	GP	Anchorage	200	17 A / A	12.0		53,292	2,157	0	37,105	92,554	
													<b>Total Salary Costs:</b>	16,500,122			
													<b>Total COLA:</b>	327,120			
													<b>Total Premium Pay:</b>	371,760			
													<b>Total Benefits:</b>	10,267,221			
													<b>Total Pre-Vacancy:</b>	27,466,223			
													<b>Minus Vacancy Adjustment of 5.75%:</b>	(1,578,923)			
													<b>Total Post-Vacancy:</b>	25,887,300			
													<b>Plus Lump Sum Premium Pay:</b>	0			
													<b>Personal Services Line 100:</b>	25,887,300			
<b>Total Component Months:</b>				2964.9													

<b>PCN Funding Sources:</b>		<b>Pre-Vacancy</b>	<b>Post-Vacancy</b>	<b>Percent</b>
1002	Federal Receipts	11,015,626	10,382,381	40.11%
1003	General Fund Match	505,135	476,097	1.84%
1004	General Fund Receipts	1,586,610	1,495,402	5.78%
1007	Interagency Receipts	231,482	218,175	0.84%
1024	Fish and Game Fund	12,730,959	11,999,107	46.35%
1061	Capital Improvement Project Receipts	1,102,769	1,039,375	4.02%
1108	Statutory Designated Program Receipts	293,643	276,762	1.07%
<b>Total PCN Funding:</b>		<b>27,466,223</b>	<b>25,887,300</b>	<b>100.00%</b>

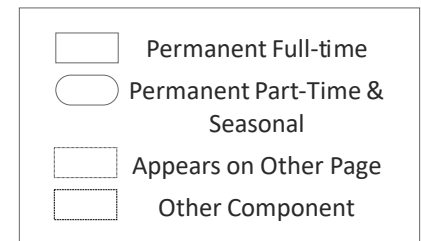
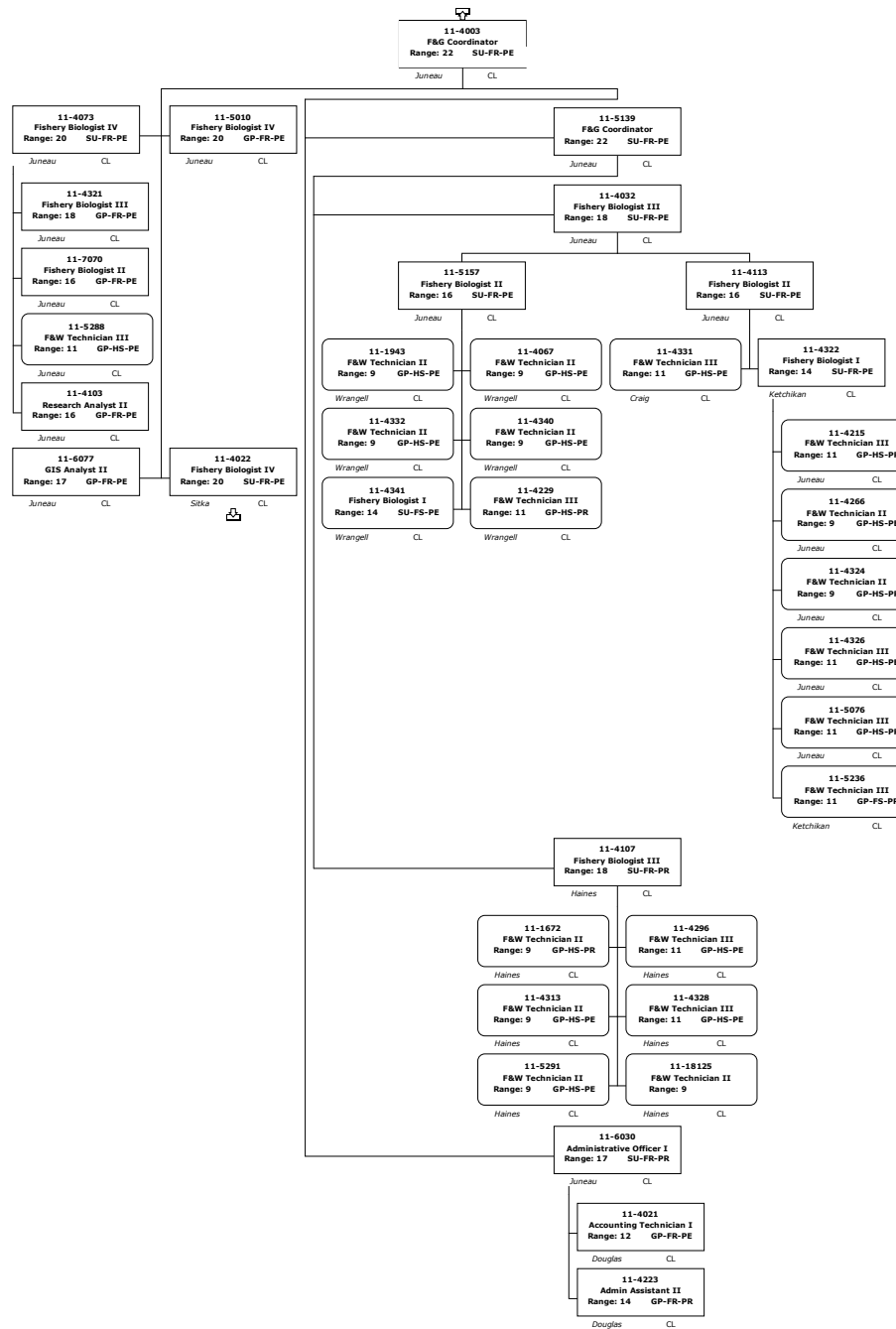
Note: If a position is split, an asterisk (\*) will appear in the Split/Count column. If the split position is also counted in the component, two asterisks (\*\*) will appear in this column. [No valid job title] appearing in the Job Class Title indicates that the PCN has an invalid class code or invalid range for the class code effective date of this scenario.



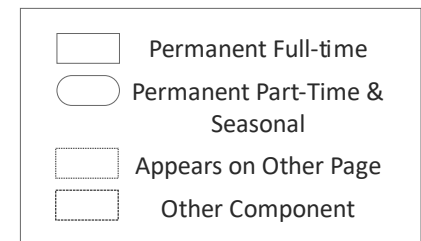
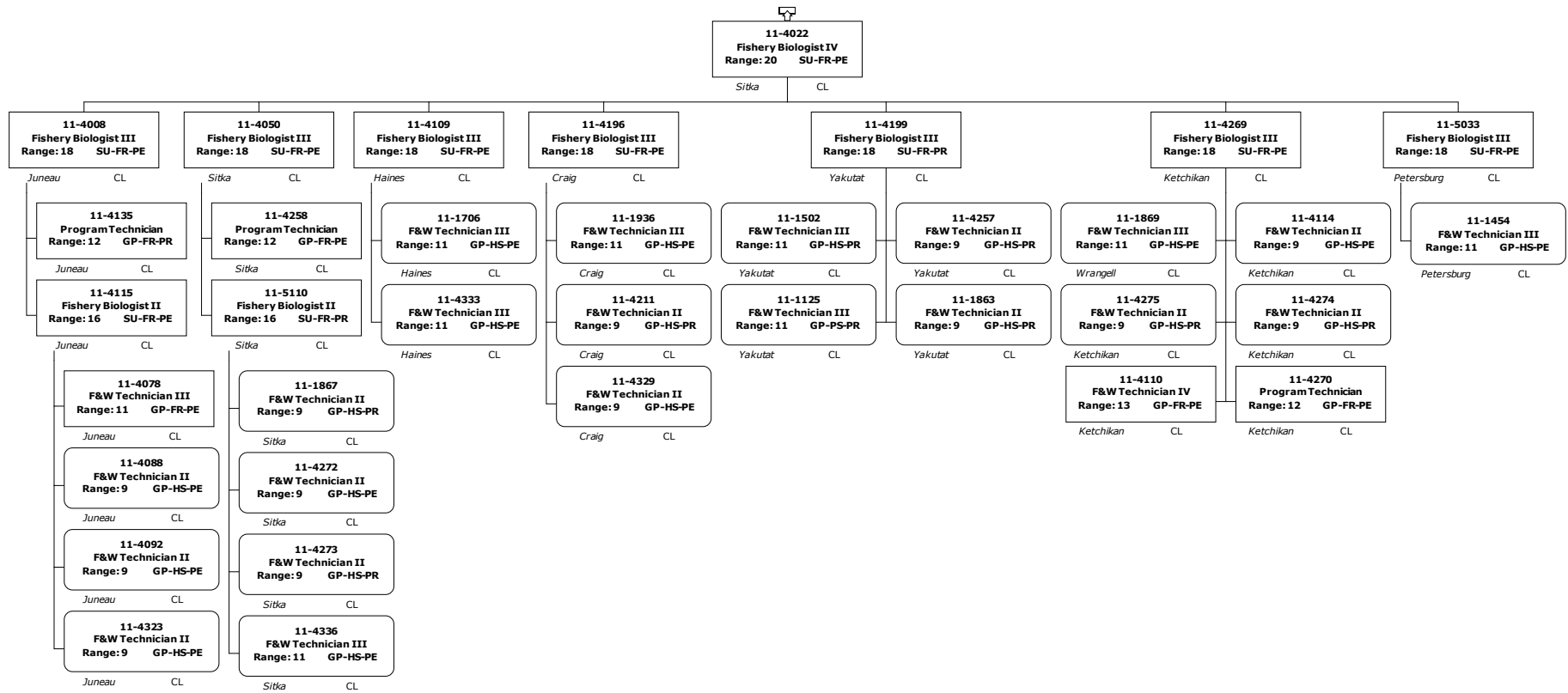
Division of Sport Fish  
464 - Sport Fisheries



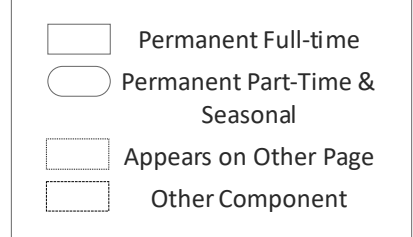
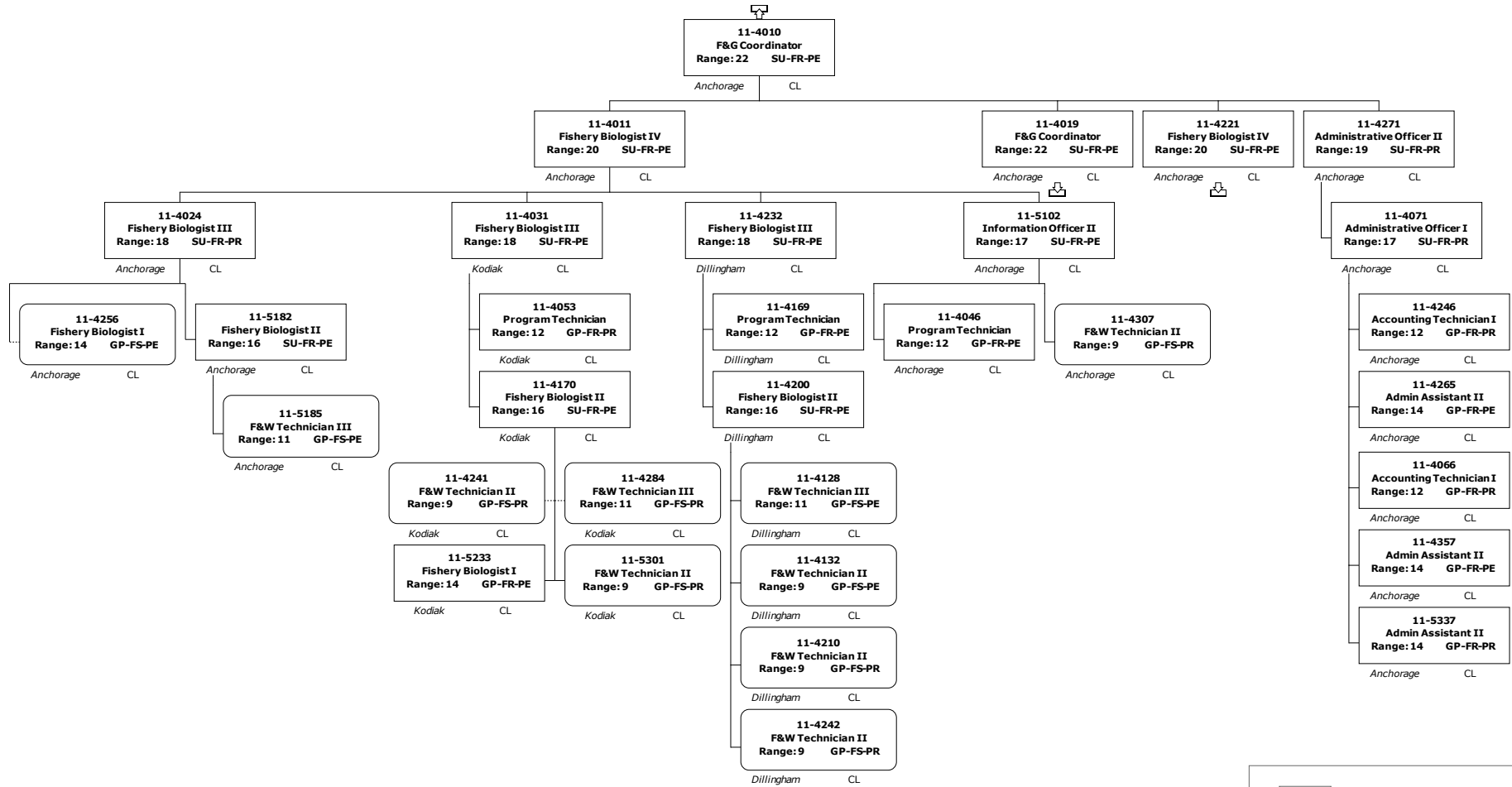
# Division of Sport Fish 464 - Sport Fisheries



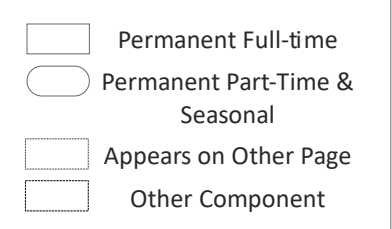
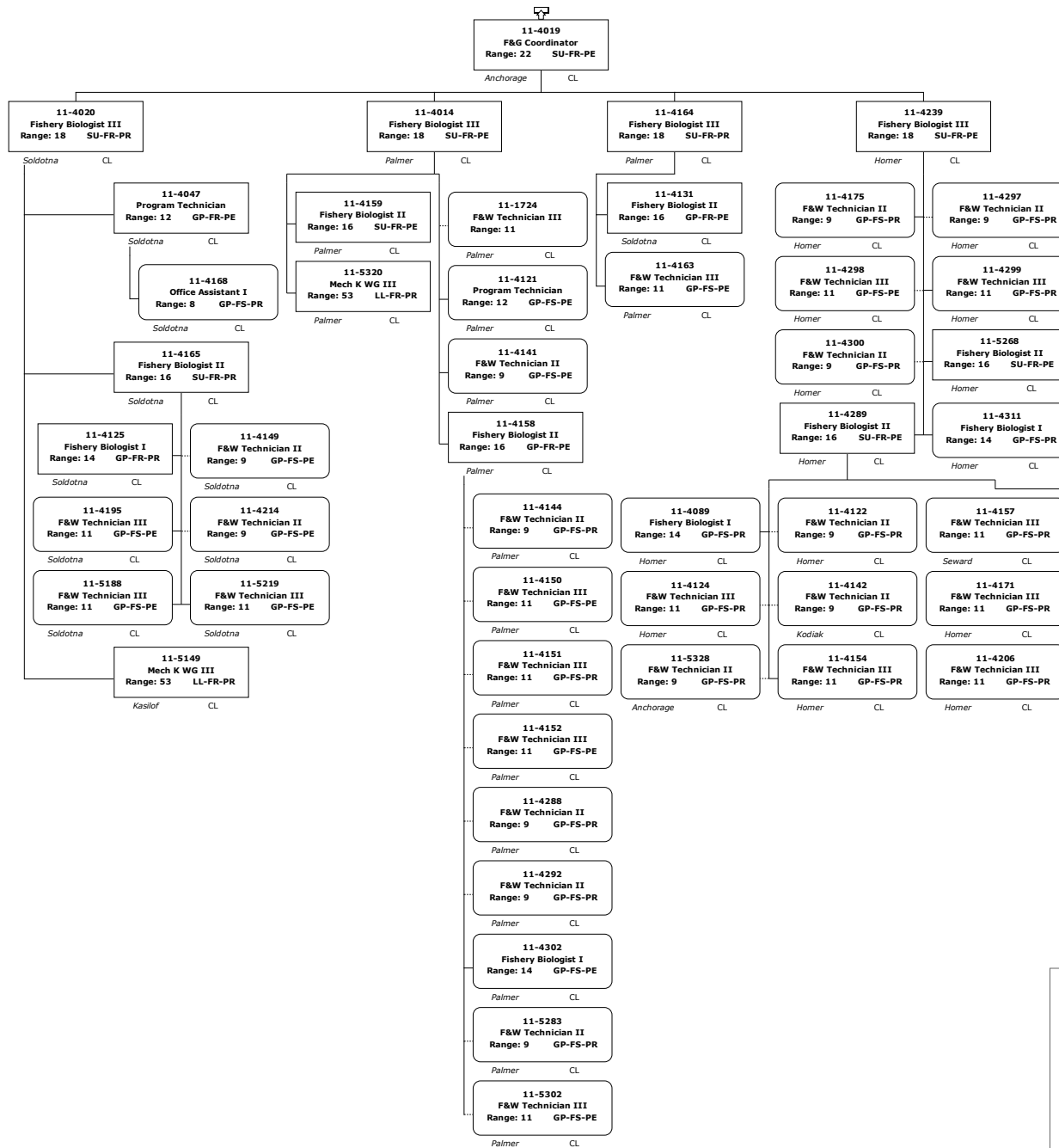
# Division of Sport Fish 464 - Sport Fisheries



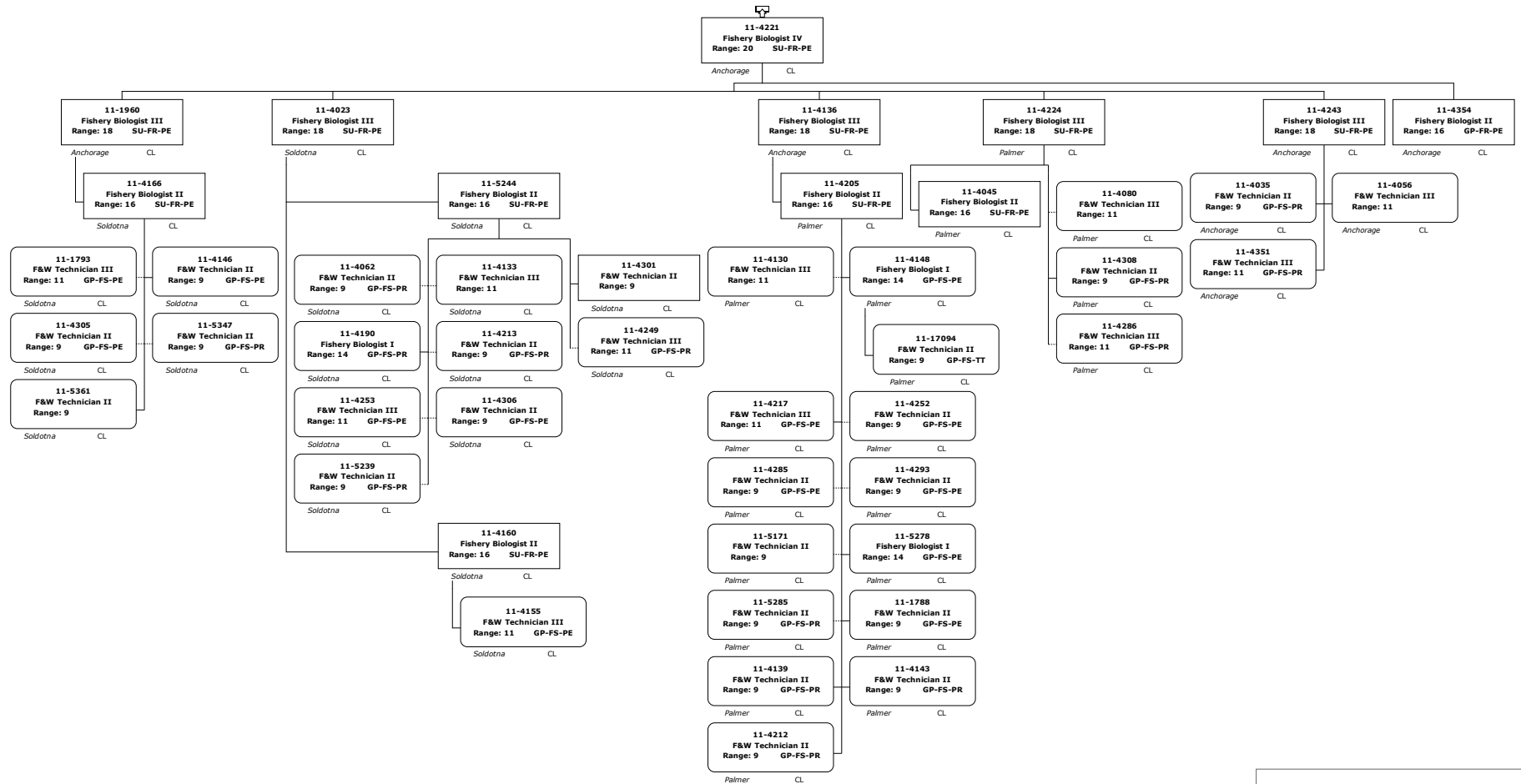
# Division of Sport Fish 464 - Sport Fisheries



# Division of Sport Fish 464 - Sport Fisheries

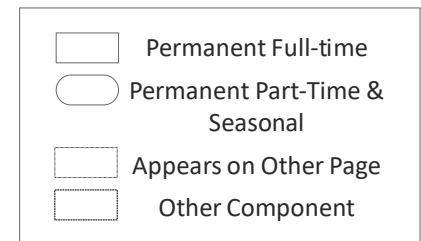
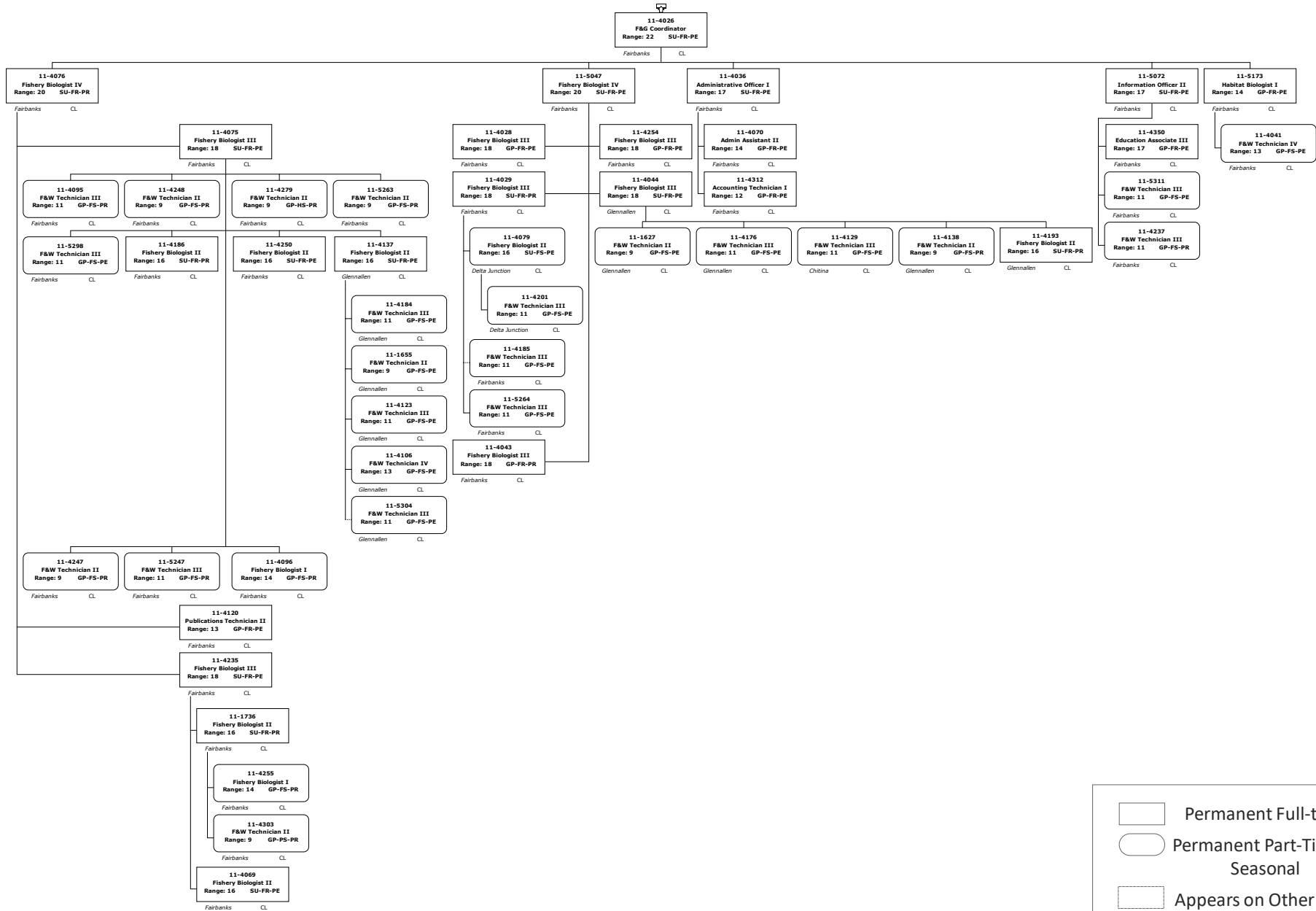


# Division of Sport Fish 464 - Sport Fisheries

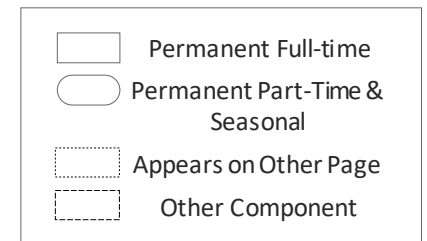
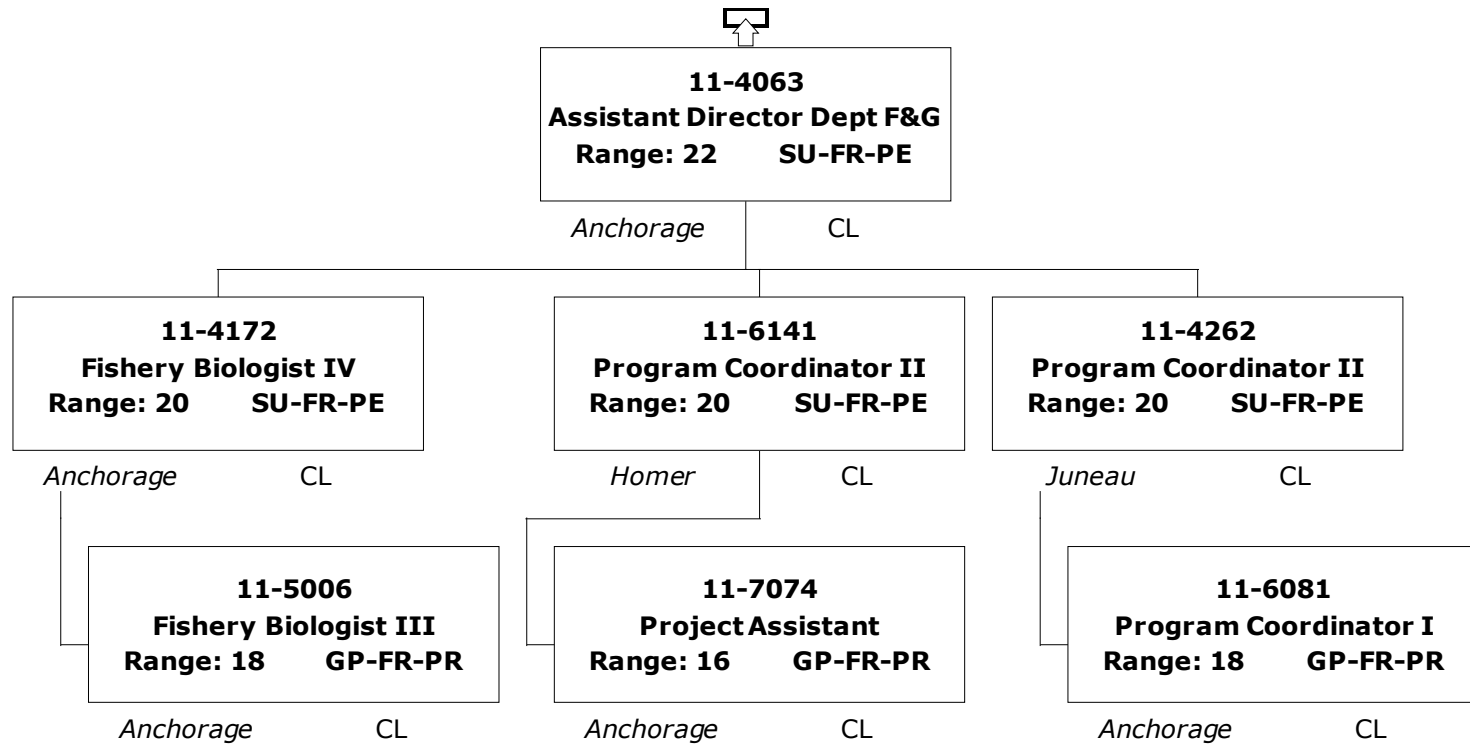


	Permanent Full-time
	Permanent Part-Time & Seasonal
	Appears on Other Page
	Other Component

# Division of Sport Fish 464 - Sport Fisheries

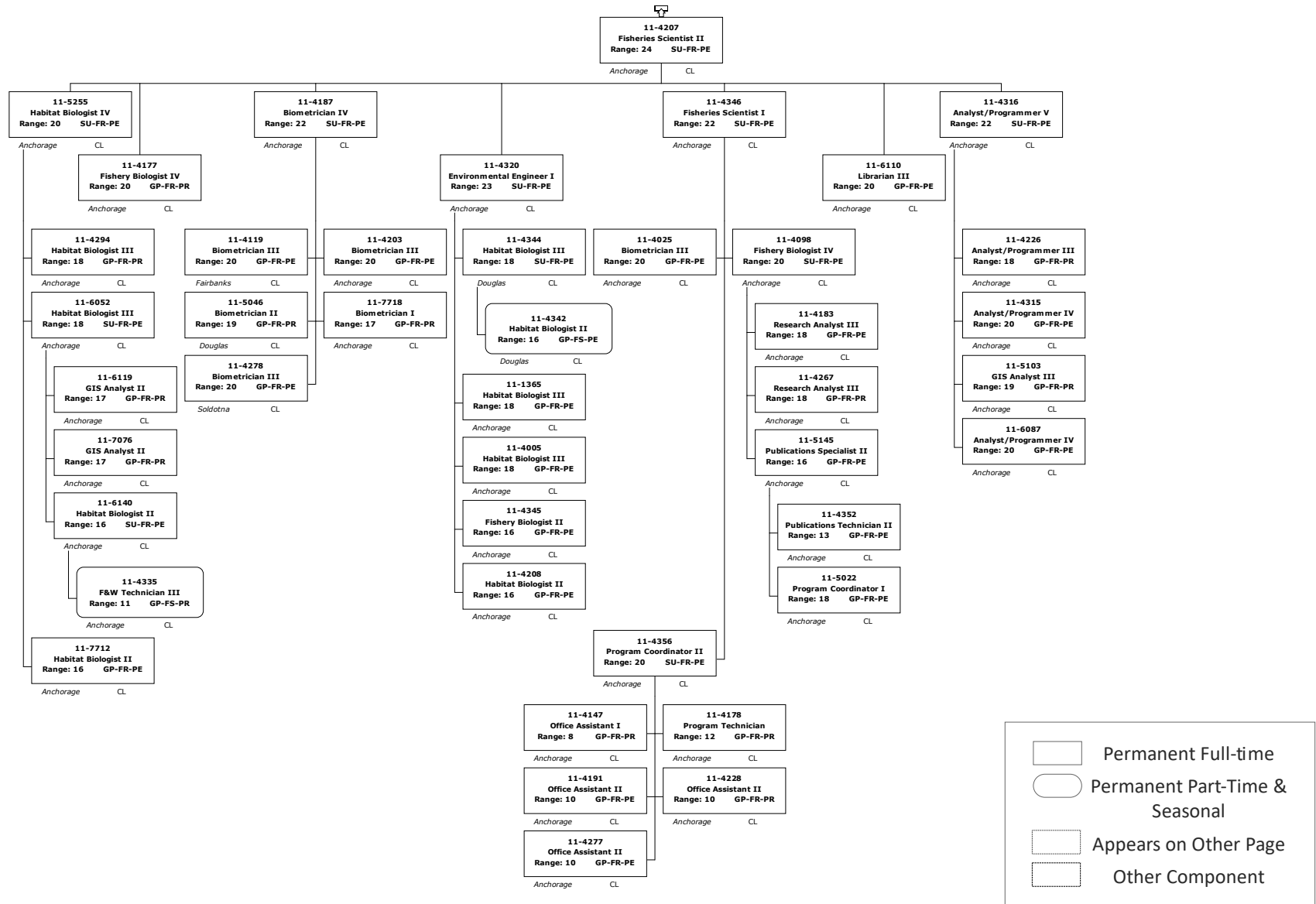


Division of Sport Fish  
464 - Sport Fisheries





# Division of Sport Fish 464 - Sport Fisheries



Division of Sport Fish  
464 - Sport Fisheries

