

Component Detail (1077)
Department of Health and Social Services

Component: Public Assistance Field Services (236)

Non-Formula Component

RDU: Public Assistance (73)

IRIS AP Type: H067

	FY2018 Actuals (15158)	FY2019 Conference Committee (14954)	FY2019 Authorized (14962)	FY2019 Management Plan (14994)	FY2020 Governor (15610)	FY2020 Governor Amended (15636)	FY2020 Governor vs FY2020 Governor Amended	
1000 Personal Services	34,253.1	39,845.5	39,845.5	40,863.9	41,800.1	40,437.7	-1,362.4	-3.3%
2000 Travel	157.0	157.0	157.0	157.0	147.0	68.4	-78.6	-53.5%
3000 Services	18,491.5	10,992.0	10,992.0	11,092.0	12,928.1	10,528.1	-2,400.0	-18.6%
4000 Commodities	495.8	579.5	579.5	579.5	526.2	526.2	0.0	0.0%
5000 Capital Outlay	5.7	15.0	15.0	15.0	15.0	15.0	0.0	0.0%
7000 Grants, Benefits	0.0	0.0	0.0	0.0	0.0	0.0	0.0	0.0%
8000 Miscellaneous	0.0	0.0	0.0	0.0	0.0	0.0	0.0	0.0%
Totals	53,403.1	51,589.0	51,589.0	52,707.4	55,416.4	51,575.4	-3,841.0	-6.9%
<u>Funding Sources:</u>								
1002 Fed Rcpts (Fed)	28,769.7	26,567.2	26,567.2	26,602.1	28,517.7	27,770.5	-747.2	-2.6%
1003 G/F Match (UGF)	20,456.6	20,345.8	20,345.8	20,386.3	21,072.6	18,089.6	-2,983.0	-14.2%
1004 Gen Fund (UGF)	2,508.8	3,869.9	3,869.9	3,869.9	3,953.1	3,866.2	-86.9	-2.2%
1007 I/A Rcpts (Other)	1,631.3	662.6	662.6	1,705.6	1,727.7	1,705.6	-22.1	-1.3%
1108 Stat Desig (Other)	36.7	143.5	143.5	143.5	145.3	143.5	-1.8	-1.2%
<u>Funding Totals:</u>								
Unrestricted General (UGF)	22,965.4	24,215.7	24,215.7	24,256.2	25,025.7	21,955.8	-3,069.9	-12.3%
Designated General (DGF)	0.0	0.0	0.0	0.0	0.0	0.0	0.0	0.0%
Other	1,668.0	806.1	806.1	1,849.1	1,873.0	1,849.1	-23.9	-1.3%
Federal	28,769.7	26,567.2	26,567.2	26,602.1	28,517.7	27,770.5	-747.2	-2.6%
<u>Positions:</u>								
Permanent Full Time	419	440	440	462	466	466	0	0.0%
Permanent Part Time	8	8	8	8	8	8	0	0.0%
Non Permanent	0	0	0	0	0	0	0	0.0%

Change Record Detail - Multiple Scenarios with Descriptions (294)
Department of Health and Social Services

Component: Public Assistance Field Services (236)
RDU: Public Assistance (73)

Scenario/Change Record Title	Trans Type	Totals	Personal Services	Travel	Services	Commodities	Capital Outlay	Grants, Benefits	Miscellaneous	Positions		
										PFT	PPT	NP
***** Changes From FY2019 Conference Committee To FY2019 Authorized *****												
FY2019 Conference Committee												
ConfCom		51,589.0	39,845.5	157.0	10,992.0	579.5	15.0	0.0	0.0	440	8	0
1002 Fed Rcpts		26,567.2										
1003 G/F Match		20,345.8										
1004 Gen Fund		3,869.9										
1007 I/A Rcpts		662.6										
1108 Stat Desig		143.5										
Subtotal		51,589.0	39,845.5	157.0	10,992.0	579.5	15.0	0.0	0.0	440	8	0
***** Changes From FY2019 Authorized To FY2019 Management Plan *****												
Transfer Eligibility Office Manager I (06-8647) from Work Services to Supervise Nome Office												
Trin		75.4	75.4	0.0	0.0	0.0	0.0	0.0	0.0	1	0	0
1002 Fed Rcpts		34.9										
1003 G/F Match		40.5										
Transfer full-time range 18 Nome Eligibility Office Manager I (06-8647) from Work Services to supervise Nome Eligibility office.												
Transfer Authority from Child Care Benefits and Tribal Assistance Programs for Permanent Fund Dividend Hold Harmless												
Trin		1,043.0	1,043.0	0.0	0.0	0.0	0.0	0.0	0.0	0	0	0
1007 I/A Rcpts		1,043.0										
Transfer authority from Tribal Assistance Programs and Child Care Benefits components to fully collect the Permanent Fund Dividend Hold Harmless reimbursable service agreement.												
Align Authority for Anticipated Expenditures												
LIT		0.0	-100.0	0.0	100.0	0.0	0.0	0.0	0.0	0	0	0
Authority is needed in the services line and is available from the personal services line based on prior year actuals.												
Add 21 Positions to Address Caseload Backlog												
PosAdj		0.0	0.0	0.0	0.0	0.0	0.0	0.0	0.0	21	0	0
The division is requesting an additional 21 new positions to support ongoing efforts to reduce the caseload backlog. In FY2019, the division identified a need for 41 new positions and received 20 positions to address the caseload backlog. The backlog is a result of the introduction of the modified adjusted gross income (MAGI) Medicaid, the introduction of a new eligibility information system requiring staff to complete work in both the new and legacy systems, and continued increase in application for services. These additional positions will be critical for ongoing eligibility determinations that have department-wide program effects.												
Subtotal		52,707.4	40,863.9	157.0	11,092.0	579.5	15.0	0.0	0.0	462	8	0
***** Changes From FY2019 Management Plan To FY2020 Governor Amended *****												
Reverse New Positions to Address Increased Caseloads (FY19 - FY21)												
OTI		-2,214.3	-2,051.0	-10.0	-100.0	-53.3	0.0	0.0	0.0	-20	0	0

Change Record Detail - Multiple Scenarios with Descriptions (294)
Department of Health and Social Services

Component: Public Assistance Field Services (236)
RDU: Public Assistance (73)

Scenario/Change Record Title	Trans Type	Totals	Personal Services	Travel	Services	Commodities	Capital Outlay	Grants, Benefits	Miscellaneous	Positions		
										PFT	PPT	NP
1002 Fed Rcpts		-1,107.2										
1003 G/F Match		-1,107.1										
Technical reversal of one-time appropriation.												
Restore New Positions to Address Increased Caseloads (FY19 - FY21)												
	IncT	2,214.3	2,051.0	10.0	100.0	53.3	0.0	0.0	0.0	20	0	0
1002 Fed Rcpts		1,107.2										
1003 G/F Match		1,107.1										

The division's application backlog began to steadily increase in FY2014. The increase is mostly attributed to the following: the introduction of modified adjusted gross income Medicaid; introduction of a new eligibility information system which resulted in the need for staff to calculate modified adjusted gross income Medicaid eligibility using a manual budget sheet; loss of staff productivity due to training on the new system; staff continuing to work in both the new and legacy eligibility systems as not all programs are on the new system; consistent increase in customers applying for services; and the elimination of nonpermanent staff which were funded by the Mental Health Trust.

While the majority of public assistance program case levels have remained relatively steady over the last five years, there has been an increase in Medicaid and Supplemental Nutrition Assistance Program cases. Medicaid cases have increased by approximately 43,000 and Supplemental Nutrition Assistance Program by approximately 7,500 between FY2012 and FY2017. The division receives approximately 11,000 applications a month, 8,000 of those are for Medicaid or the Supplemental Nutrition Assistance Program.

The 2018 Legislature approved 20 new positions and \$2,214.3 temporary authority for FY19-21. In the months since this initiative took effect, the division has reduced the statewide backlog by approximately one-third. These positions are needed in FY2020 to ensure the division can continue to reduce the application backlog.

Executive Branch 50% Travel Reduction

	Dec	-78.6	0.0	-78.6	0.0	0.0	0.0	0.0	0.0	0	0	0
1002 Fed Rcpts		-51.8										
1003 G/F Match		-23.1										
1004 Gen Fund		-3.7										

50% executive branch travel reduction based on actual costs of travel in FY2018. Exceptions were made to travel essential to public safety, health, and disaster management.

Public Assistance Administrative Efficiencies

	Dec	-2,400.0	0.0	0.0	-2,400.0	0.0	0.0	0.0	0.0	0	0	0
1003 G/F Match		-2,400.0										

The division will realize administrative efficiencies from consolidated lease space, efforts to minimize paper filing systems, systems improvements through collaborative efforts with Code for America, and staff retention to reduce costs associated with training.

Transfer from Energy Assistance and Public Assistance Administration for Increased Chargeback Costs

Change Record Detail - Multiple Scenarios with Descriptions (294)
Department of Health and Social Services

Component: Public Assistance Field Services (236)

RDU: Public Assistance (73)

Scenario/Change Record Title	Trans Type	Totals	Personal Services	Travel	Services	Commodities	Capital Outlay	Grants, Benefits	Miscellaneous	Positions		
										PFT	PPT	NP
	Trin	911.4	0.0	0.0	911.4	0.0	0.0	0.0	0.0	0	0	0
1002 Fed Rcpts		886.4										
1003 G/F Match		25.0										
Authority is needed on the services line to accommodate increased reimbursable service agreement chargeback costs.												
Transfer Public Assist Analyst II (06-8329) from Public Assistance Administration												
	Trin	114.2	114.2	0.0	0.0	0.0	0.0	0.0	0.0	1	0	0
1002 Fed Rcpts		57.1										
1003 G/F Match		57.1										
Transfer full time range 18 Anchorage Public Assist Analyst II (06-8329) from Public Assistance Administration in order to align with the position's job duties and funding sources.												
Transfer (02-7625) from Child Care Benefits and (06-8124) (06-8646) from Work Services												
	Trin	321.0	321.0	0.0	0.0	0.0	0.0	0.0	0.0	3	0	0
1002 Fed Rcpts		276.7										
1003 G/F Match		44.3										
The Division of Public Assistance is transferring multiple positions between components in order to better align with the positions' job duties and funding sources.												
Transfer full time range 16 Anchorage Training Specialist I (02-7625) from Child Care Benefits.												
Transfer full time range 21 Anchorage Public Assistance Programs Officer (06-8124) from Work Services.												
Transfer full time range 16 Anchorage Project Assistant (06-8646) from Work Services.												
Align Authority for Increased Chargeback Services												
	LIT	0.0	-861.4	-10.0	924.7	-53.3	0.0	0.0	0.0	0	0	0
Authority is needed on the services line to accommodate increased reimbursable service agreement chargeback costs.												
Totals		51,575.4	40,437.7	68.4	10,528.1	526.2	15.0	0.0	0.0	466	8	0

Personal Services Expenditure Detail (1445)

Department of Health and Social Services

Scenario: FY2020 Governor Amended (15636)
 Component: Public Assistance Field Services (236)
 RDU: Public Assistance (73)

Status	PCN	Tracking ID	Job Class Title	Time Status	Retire Code	Barg Unit	Location	Salary Sched	Range / Steps	Comp Months	Split / Count	Annual Salaries	COLA	Premium Pay	Annual Benefits	Total Costs	UGF Amount
TI	02-7625	4305	Training Specialist I	FT	A	GP	Anchorage	200	16 A / B	12.0		50,784	2,068	0	36,630	89,482	45,994
	05-2317	6380	Public Assist Analyst I	FT	A	GG	Anchorage	99	16 N / N	12.0		71,714	2,920	0	44,107	118,741	63,645
	05-8711	6587	Employ Serv Tech II	FT	A	GP	Kenai	200	15 B	12.0		66,636	2,713	0	42,293	111,642	
	06-2102	32856	Elig Technician II	FT	A	GG	Wasilla	100	14 C / D	12.0		48,456	1,973	0	35,799	86,228	43,114
	06-2103	32857	Elig Technician II	FT	A	GG	Wasilla	100	14 C / D	12.0		48,456	1,973	0	35,799	86,228	43,114
	06-2104	32858	Elig Technician II	FT	A	GG	Wasilla	100	14 C / D	12.0		48,456	1,973	0	35,799	86,228	43,114
	06-2105	32859	Elig Technician II	FT	A	GG	Wasilla	100	14 C / D	12.0		48,456	1,973	0	35,799	86,228	43,114
	06-2106	32860	Elig Technician II	FT	A	GG	Wasilla	100	14 C / D	12.0		48,456	1,973	0	35,799	86,228	43,114
	06-2107	32861	Elig Technician II	FT	A	GG	Wasilla	100	14 C / D	12.0		48,456	1,973	0	35,799	86,228	43,114
	06-2108	32862	Elig Technician II	FT	A	GG	Wasilla	100	14 C / D	12.0		48,456	1,973	0	35,799	86,228	43,114
	06-2109	32863	Elig Technician II	FT	A	GG	Wasilla	100	14 C / D	12.0		48,456	1,973	0	35,799	86,228	43,114
	06-2110	32864	Elig Technician II	FT	A	GG	Wasilla	100	14 C / D	12.0		48,456	1,973	0	35,799	86,228	43,114
	06-2111	32865	Elig Technician II	FT	A	GG	Sitka	205	14 C / D	12.0		50,448	2,054	0	36,510	89,012	44,506
	06-2112	32866	Elig Technician II	FT	A	GG	Wasilla	100	14 C / D	12.0		48,456	1,973	0	35,799	86,228	43,114
	06-2113	32867	Elig Technician II	FT	A	GG	Wasilla	100	14 C / D	12.0		48,456	1,973	0	35,799	86,228	43,114
	06-2114	32868	Elig Technician IV	FT	A	SS	Kodiak	211	17 C / D	12.0		73,380	0	0	45,042	118,422	59,211
	06-2115	32869	Elig Technician IV	FT	A	SS	Sitka	205	17 C / D	12.0		69,408	0	0	43,623	113,031	56,516
	06-2116	32870	Elig Technician IV	FT	A	SS	Wasilla	200	17 C / D	12.0		66,108	0	0	42,444	108,552	54,276
	06-2117	32871	Elig Technician IV	FT	A	SS	Wasilla	100	17 C / D	12.0		66,108	0	0	42,444	108,552	54,276
	06-2118	32872	Office Assistant II	FT	A	GG	Wasilla	100	10 C / D	12.0		37,320	1,520	0	31,821	70,661	35,331
	06-2119	32873	Office Assistant II	FT	A	GG	Wasilla	100	10 C / D	12.0		37,320	1,520	0	31,821	70,661	35,331
	06-2120	32874	Office Assistant II	FT	A	GG	Anchorage	100	10 C / D	12.0		37,320	1,520	0	31,821	70,661	35,331
	06-2121	32875	Office Assistant II	FT	A	GG	Anchorage	100	10 C / D	12.0		37,320	1,520	0	31,821	70,661	35,331
	06-2122	32876	Office Assistant II	FT	A	GG	Anchorage	100	10 C / D	12.0		37,320	1,520	0	31,821	70,661	35,331
	06-1030	6827	Public Assist Analyst I	FT	A	GP	Anchorage	200	16 L / M	12.0		68,369	2,784	0	42,912	114,065	61,139
	06-2041	2451	Office Assistant I	FT	A	GP	Anchorage	200	8 D / E	12.0		33,108	1,348	0	30,317	64,773	34,718
	06-3901	8025	Elig Technician II	FT	A	GP	Juneau	205	14 D / E	12.0		51,052	2,079	0	36,726	89,857	45,468
	06-4938	8464	Elig Technician II	FT	A	GP	Anchorage	200	14 E / F	12.0		59,772	2,434	0	39,841	102,047	
	06-4939	8465	Office Assistant I	FT	A	GP	Anchorage	200	8 G / J	12.0		36,260	1,476	0	31,442	69,178	37,079

Note: If a position is split, an asterisk (*) will appear in the Split/Count column. If the split position is also counted in the component, two asterisks (**) will appear in this column.
 [No valid job title] appearing in the Job Class Title indicates that the PCN has an invalid class code or invalid range for the class code effective date of this scenario.

Personal Services Expenditure Detail (1445)

Department of Health and Social Services

Scenario: FY2020 Governor Amended (15636)
Component: Public Assistance Field Services (236)
RDU: Public Assistance (73)

Status	PCN	Tracking ID	Job Class Title	Time Status	Retire Code	Barg Unit	Location	Salary Sched	Range / Steps	Comp Months	Split / Count	Annual Salaries	COLA	Premium Pay	Annual Benefits	Total Costs	UGF Amount
06-8003		8765	Public Assist Analyst II	FT	A	GP	Anchorage	200	18 J	12.0		73,092	2,976	0	44,599	120,667	64,678
06-8024		8767	Office Assistant I	FT	A	GP	Anchorage	200	8 D / E	12.0		33,668	1,371	0	30,517	65,556	35,138
06-8025		8768	Office Assistant I	FT	A	GP	Fairbanks	203	8 F / G	12.0		36,032	1,467	0	31,361	68,860	36,909
06-8031		8772	Elig Technician II	FT	A	GP	Bethel	250	14 B / C	12.0		69,480	2,829	0	43,309	115,618	58,503
06-8032		8773	Office Assistant IV	FT	A	SS	Ketchikan	600	12 A / B	12.0		42,854	0	0	34,138	76,992	41,268
06-8033		8774	Elig Technician II	FT	A	GP	Anchorage	200	14 K	12.0		57,324	2,334	0	38,966	98,624	49,904
06-8034		8775	Elig Technician II	FT	A	GP	Nome	237	14 E / F	12.0		69,468	2,828	0	43,304	115,600	58,494
06-8035		8776	Elig Technician II	FT	A	GP	Ketchikan	200	14 E / F	12.0		50,861	2,071	0	36,658	89,590	45,333
06-8036		8777	Elig Technician II	FT	A	GG	Fairbanks	99	14 L	12.0		61,560	2,506	0	40,480	104,546	52,900
06-8037		8778	Eligibility Office Manager II	FT	A	SS	Ketchikan	200	19 B / C	12.0		71,432	0	0	44,346	115,778	62,057
06-8038		8779	Elig Technician II	FT	A	GP	Kenai	200	14 D / E	12.0		48,408	1,971	0	35,782	86,161	43,597
06-8039		8780	Eligibility Office Manager II	FT	A	SS	Juneau	205	19 B / C	12.0		75,199	0	0	45,691	120,890	64,797
06-8040		8781	Eligibility Office Manager I	FT	A	SS	Fairbanks	203	18 E / F	12.0		75,192	0	0	45,689	120,881	64,792
06-8041		8782	Public Asst Fld Svcs Mgr I	FT	A	SS	Wasilla	200	19 E	12.0		78,000	0	0	46,692	124,692	66,835
06-8042		8783	Public Asst Fld Svcs Mgr II	FT	A	SS	Fairbanks	99	21 L / M	12.0		105,765	0	0	56,610	162,375	87,033
06-8043		8784	Elig Technician IV	FT	A	SS	Anchorage	200	17 F	12.0		70,704	0	0	44,086	114,790	61,527
06-8044		8785	Elig Technician II	FT	A	GP	Juneau	205	14 B / C	12.0		48,372	1,970	0	35,769	86,111	43,572
06-8045		8786	Elig Technician II	FT	A	GP	Fairbanks	203	14 K	12.0		59,040	2,404	0	39,579	101,023	51,118
06-8046		8787	Elig Technician II	FT	A	GP	Sitka	205	14 A / B	12.0		47,052	1,916	0	35,297	84,265	42,638
06-8049		8790	Office Assistant II	FT	A	GP	Sitka	205	10 A / B	12.0		36,576	1,489	0	31,555	69,620	37,316
06-8050		8791	Eligibility Office Manager II	FT	A	SS	Kenai	99	19 Q / Q	12.0		108,077	0	0	57,435	165,512	88,714
06-8051		8792	Elig Technician II	FT	A	GP	Fairbanks	203	14 B / C	12.0		46,672	1,900	0	35,162	83,734	42,369
06-8054		8793	Elig Technician II	FT	A	GP	Kenai	200	14 D / E	12.0		48,552	1,977	0	35,833	86,362	43,699
06-8055		8794	Elig Technician II	FT	A	GP	Fairbanks	203	14 A / B	12.0		45,009	1,833	0	34,568	81,410	41,193
06-8057		8796	Elig Technician III	FT	A	GP	Fairbanks	203	16 E / F	12.0		60,190	2,451	0	39,990	102,631	55,010
06-8059		8797	Elig Technician II	FT	A	GP	Anchorage	200	14 B / C	12.0		45,123	1,837	0	34,608	81,568	41,273
06-8060		8798	Elig Technician III	FT	A	GP	Anchorage	200	16 G	12.0		61,416	2,501	0	40,428	104,345	55,929
06-8061		8799	Elig Technician II	FT	A	GP	Anchorage	200	14 A / B	12.0		44,070	1,794	0	34,232	80,096	40,529
06-8062		8800	Elig Technician III	FT	A	GP	Anchorage	99	16 O / P	12.0		76,884	3,130	0	45,953	125,967	67,518

Note: If a position is split, an asterisk (*) will appear in the Split/Count column. If the split position is also counted in the component, two asterisks (**) will appear in this column.
 [No valid job title] appearing in the Job Class Title indicates that the PCN has an invalid class code or invalid range for the class code effective date of this scenario.

Personal Services Expenditure Detail (1445)

Department of Health and Social Services

Scenario: FY2020 Governor Amended (15636)
Component: Public Assistance Field Services (236)
RDU: Public Assistance (73)

Status	PCN	Tracking ID	Job Class Title	Time Status	Retire Code	Barg Unit	Location	Salary Sched	Range / Steps	Comp Months	Split / Count	Annual Salaries	COLA	Premium Pay	Annual Benefits	Total Costs	UGF Amount
06-8063		8801	Elig Technician IV	FT	A	SS	Ketchikan	200	17 B / C	12.0		63,759	0	0	41,605	105,364	56,475
06-8064		8802	Public Assist Analyst II	FT	A	GP	Anchorage	99	18 M / N	12.0		81,624	3,323	0	47,646	132,593	71,070
06-8066		8803	Administrative Assistant II	FT	A	GP	Wasilla	200	14 F	12.0		51,636	2,102	0	36,935	90,673	48,601
06-8067		8804	Office Assistant I	FT	A	GG	Fairbanks	99	8 P / Q	12.0		47,195	1,922	0	35,348	84,465	45,273
06-8068		8805	Public Asst Fld Svcs Mgr II	FT	A	SS	Anchorage	99	21 Q / R	12.0		118,810	0	0	61,269	180,079	96,522
06-8072		8806	Elig Technician IV	FT	A	SS	Anchorage	200	17 F	12.0		70,704	0	0	44,086	114,790	61,527
06-8073		8807	Elig Technician III	FT	A	GP	Anchorage	200	16 G / J	12.0		63,536	2,587	0	41,185	107,308	57,517
06-8077		8809	Administrative Assistant II	FT	A	GP	Anchorage	200	14 L / M	12.0		62,184	2,532	0	40,702	105,418	56,504
06-8078		8810	Elig Technician II	FT	A	GP	Fairbanks	203	14 J	12.0		57,192	2,329	0	38,919	98,440	49,811
06-8079		8811	Elig Technician II	FT	A	GP	Bethel	250	14 G	12.0		79,944	3,255	0	47,046	130,245	65,904
06-8081		8812	Eligibility Office Manager II	FT	A	SS	Anchorage	200	19 F	12.0		80,892	0	0	47,725	128,617	68,939
06-8084		8814	Elig Technician III	FT	A	GG	Wasilla	99	16 Q / R	12.0		82,752	3,369	0	48,049	134,170	71,915
06-8085		8815	Elig Technician II	FT	A	GP	Juneau	205	14 D / E	12.0		50,977	2,076	0	36,699	89,752	45,415
06-8086		8816	Office Assistant I	FT	A	GP	Juneau	205	8 D / E	12.0		34,764	1,415	0	30,908	67,087	35,959
06-8087		8817	Elig Technician II	FT	A	GP	Ketchikan	200	14 D / E	12.0		49,128	2,000	0	36,039	87,167	44,107
06-8089		8818	Elig Technician II	FT	A	GP	Fairbanks	203	14 A / B	12.0		45,454	1,851	0	34,726	82,031	41,508
06-8090		8819	Elig Technician II	FT	A	GP	Bethel	99	14 Q / R	12.0		105,584	4,299	0	56,205	166,088	84,041
06-8091		8820	Elig Technician II	FT	A	GP	Anchorage	200	14 G / J	12.0		53,943	2,196	0	37,759	93,898	47,512
06-8098		8823	Elig Technician IV	FT	A	SS	Wasilla	200	17 C / D	12.0		65,450	0	0	42,209	107,659	57,705
06-8099		8824	Elig Technician III	FT	A	GP	Anchorage	200	16 B / C	12.0		52,119	2,122	0	37,107	91,348	48,963
06-8100		8825	Elig Technician II	FT	A	GP	Wasilla	200	14 A / B	12.0		43,763	1,782	0	34,122	79,667	40,312
06-8101		8826	Elig Technician II	FT	A	GP	Anchorage	200	14 A / B	12.0		43,763	1,782	0	34,122	79,667	40,312
06-8102		8827	Elig Technician II	FT	A	GP	Anchorage	200	14 A / B	12.0		44,070	1,794	0	34,232	80,096	40,529
06-8103		8828	Elig Technician II	FT	A	GP	Wasilla	200	14 K / L	12.0		57,867	2,356	0	39,160	99,383	50,288
06-8105		8830	Public Assist Analyst II	FT	A	GP	Anchorage	200	18 N / O	12.0		85,314	3,474	0	48,964	137,752	73,835
06-8106		8831	Elig Technician III	FT	A	GP	Wasilla	200	16 G	12.0		61,416	2,501	0	40,428	104,345	55,929
06-8107		8832	Office Assistant II	FT	A	GP	Anchorage	200	10 C / D	12.0		37,020	1,507	0	31,714	70,241	37,649
06-8109		8834	Office Assistant II	FT	A	GP	Wasilla	200	10 C / D	12.0		36,684	1,494	0	31,594	69,772	37,398
06-8110		8835	Office Assistant I	FT	A	GP	Anchorage	200	8 G	12.0		36,012	1,466	0	31,354	68,832	36,894

Note: If a position is split, an asterisk (*) will appear in the Split/Count column. If the split position is also counted in the component, two asterisks (**) will appear in this column.
 [No valid job title] appearing in the Job Class Title indicates that the PCN has an invalid class code or invalid range for the class code effective date of this scenario.

Personal Services Expenditure Detail (1445)

Department of Health and Social Services

Scenario: FY2020 Governor Amended (15636)
 Component: Public Assistance Field Services (236)
 RDU: Public Assistance (73)

Status	PCN	Tracking ID	Job Class Title	Time Status	Retire Code	Barg Unit	Location	Salary Sched	Range / Steps	Comp Months	Split / Count	Annual Salaries	COLA	Premium Pay	Annual Benefits	Total Costs	UGF Amount
06-8111		8836	Elig Technician III	FT	A	GP	Anchorage	99	16 C / D	12.0		67,798	2,760	0	42,708	113,266	60,711
06-8112		1069	Office Assistant I	FT	A	GP	Anchorage	200	8 B / C	12.0		31,103	1,266	0	29,600	61,969	33,215
06-8113		8837	Office Assistant II	FT	A	GP	Anchorage	200	10 C / D	12.0		37,020	1,507	0	31,714	70,241	37,649
06-8114		8838	Elig Technician III	FT	A	GP	Ketchikan	200	16 C / D	12.0		53,626	2,183	0	37,646	93,455	50,092
06-8115		8839	Elig Technician III	FT	A	GP	Juneau	205	16 G / J	12.0		64,934	2,644	0	41,685	109,263	58,565
06-8116		8840	Elig Technician II	FT	A	GP	Anchorage	200	14 C / D	12.0		46,392	1,889	0	35,062	83,343	42,172
06-8117		8841	Elig Technician III	FT	A	GP	Anchorage	200	16 G / J	12.0		63,324	2,578	0	41,110	107,012	57,358
06-8118		8842	Elig Technician III	FT	A	GP	Fairbanks	203	16 C / D	12.0		56,952	2,319	0	38,834	98,105	52,584
06-8119		8843	Elig Technician III	FT	A	GP	Juneau	205	16 A / B	12.0		53,890	2,194	0	37,740	93,824	50,290
06-8120		8844	Elig Technician III	FT	A	GP	Bethel	250	16 L / M	12.0		111,156	4,526	0	58,195	173,877	93,198
06-8121		8845	Chf Pub Asst Fld Op	FT	A	SS	Anchorage	200	22 F	12.0		98,700	0	0	54,086	152,786	81,893
TI 06-8124		8848	Public Asst Prog Off	FT	A	SS	Anchorage	200	21 E	12.0		89,040	0	0	50,635	139,675	
06-8128		8849	Office Assistant I	FT	A	GP	Anchorage	200	8 C / D	12.0		32,287	1,315	0	30,023	63,625	34,103
06-8139		8852	Elig Technician II	FT	A	GP	Wasilla	200	14 J / K	12.0		55,974	2,279	0	38,484	96,737	48,949
06-8140		8853	Elig Technician I	FT	A	GP	Juneau	205	13 A / B	12.0		42,691	1,738	0	33,740	78,169	
06-8141		8854	Elig Technician II	FT	A	GP	Anchorage	200	14 C / D	12.0		47,904	1,950	0	35,602	85,456	43,241
06-8143		8855	Office Assistant I	FT	A	GP	Wasilla	200	8 D / E	12.0		33,828	1,377	0	30,574	65,779	35,258
06-8145		8857	Elig Technician II	FT	A	GP	Kodiak	211	14 G / J	12.0		59,572	2,426	0	39,769	101,767	51,494
06-8150		8859	Elig Technician II	FT	A	GP	Fairbanks	203	14 C	12.0		61,560	2,506	0	40,480	104,546	52,900
06-8159		8862	Administrative Assistant II	FT	A	GP	Anchorage	99	14 M	12.0		62,016	2,525	0	40,642	105,183	56,378
06-8161		8863	Office Assistant IV	FT	A	SS	Bethel	99	12 N / N	12.0		88,733	0	0	50,526	139,259	74,643
06-8162		8864	Elig Technician II	FT	A	GP	Fairbanks	203	14 A / B	12.0		45,390	1,848	0	34,704	81,942	41,463
06-8165		8865	Training Specialist III	FT	A	SS	Anchorage	200	20 B / C	12.0		76,448	0	0	46,138	122,586	65,706
06-8168		8868	Elig Technician III	FT	A	GP	Ketchikan	200	16 K / L	12.0		66,484	2,707	0	42,238	111,429	59,726
06-8169		8869	Eligibility Office Manager II	FT	A	SS	Anchorage	99	19 M / M	12.0		96,172	0	0	53,183	149,355	80,054
06-8171		8870	Elig Technician III	FT	A	GP	Wasilla	200	16 F	12.0		59,376	2,418	0	39,699	101,493	54,400
06-8172		8871	Elig Technician IV	FT	A	SS	Wasilla	200	17 A / B	12.0		59,645	0	0	40,135	99,780	53,482
06-8173		8872	Elig Technician III	FT	A	GP	Anchorage	200	16 A / B	12.0		50,164	2,042	0	36,409	88,615	47,498
06-8174		8873	Elig Technician II	FT	A	GP	Anchorage	200	14 D / E	12.0		48,120	1,959	0	35,679	85,758	43,394

Note: If a position is split, an asterisk (*) will appear in the Split/Count column. If the split position is also counted in the component, two asterisks (**) will appear in this column.
 [No valid job title] appearing in the Job Class Title indicates that the PCN has an invalid class code or invalid range for the class code effective date of this scenario.

Personal Services Expenditure Detail (1445)

Department of Health and Social Services

Scenario: FY2020 Governor Amended (15636)
 Component: Public Assistance Field Services (236)
 RDU: Public Assistance (73)

Status	PCN	Tracking ID	Job Class Title	Time Status	Retire Code	Barg Unit	Location	Salary Sched	Range / Steps	Comp Months	Split / Count	Annual Salaries	COLA	Premium Pay	Annual Benefits	Total Costs	UGF Amount
06-8175		8874	Elig Technician II	FT	A	GP	Wasilla	200	14 A / B	12.0		44,808	1,824	0	34,496	81,128	41,051
06-8176		8875	Elig Technician II	FT	A	GP	Anchorage	200	14 G / J	12.0		55,059	2,242	0	38,157	95,458	48,302
06-8177		8876	Elig Technician II	FT	A	GP	Eagle River	200	14 G	12.0		53,292	2,170	0	37,526	92,988	47,052
06-8179		8878	Elig Technician III	FT	A	GP	Fairbanks	203	16 E / F	12.0		59,140	2,408	0	39,615	101,163	54,223
06-8180		8879	Elig Technician IV	FT	A	SS	Wasilla	200	17 F / J	12.0		72,624	0	0	44,772	117,396	62,924
06-8181		8880	Elig Technician III	FT	A	GP	Kenai	200	16 J	12.0		63,960	2,604	0	41,337	107,901	57,835
06-8182		8881	Elig Technician II	FT	A	GP	Fairbanks	203	14 A / B	12.0		46,025	1,874	0	34,930	82,829	41,911
06-8183		8882	Elig Technician II	FT	A	GP	Juneau	205	14 A / B	12.0		45,633	1,858	0	34,790	82,281	41,634
06-8184		8883	Elig Technician III	FT	A	GP	Anchorage	99	16 Q / Q	12.0		82,752	3,369	0	48,049	134,170	71,915
06-8185		8884	Public Asst Fld Svcs Mgr II	FT	A	SS	Ketchikan	200	21 B / C	12.0		81,897	0	0	48,084	129,981	69,670
06-8196		8889	Elig Technician II	FT	A	GP	Juneau	205	14 B / C	12.0		47,514	1,935	0	35,462	84,911	42,965
06-8200		8893	Elig Technician II	FT	A	GP	Anchorage	200	14 K / L	12.0		59,107	2,407	0	39,603	101,117	51,165
06-8201		8894	Elig Technician IV	FT	A	SS	Wasilla	99	17 S	12.0		101,171	0	0	54,969	156,140	83,691
06-8202		8895	Elig Technician II	FT	A	GP	Anchorage	200	14 G / J	12.0		53,664	2,185	0	37,659	93,508	47,315
06-8203		8896	Elig Technician II	FT	A	GP	Fairbanks	203	14 A / B	12.0		46,152	1,879	0	34,976	83,007	42,002
06-8204		8897	Elig Technician II	FT	A	GP	Kenai	200	14 G / J	12.0		54,966	2,238	0	38,124	95,328	48,236
06-8205		8898	Elig Technician II	FT	A	GP	Fairbanks	203	14 A / B	12.0		45,962	1,871	0	34,908	82,741	41,867
06-8207		8900	Office Assistant IV	FT	A	SS	Kenai	600	12 C / D	12.0		45,024	0	0	34,913	79,937	42,846
06-8208		8901	Office Assistant IV	FT	A	SS	Fairbanks	603	12 K	12.0		54,312	0	0	38,231	92,543	49,603
06-8210		8903	Training Specialist II	FT	A	GP	Juneau	205	18 J	12.0		76,752	3,125	0	45,906	125,783	67,420
06-8212		8905	Elig Technician I	FT	A	GP	Juneau	205	13 J / K	12.0		55,314	2,252	0	38,248	95,814	
06-8217		8908	Elig Technician I	PT	A	GP	Juneau	205	13 D / E	9.0		36,477	1,485	0	26,897	64,859	
06-8219		8910	Elig Technician I	PT	A	GP	Juneau	205	13 E / F	9.0		37,836	1,541	0	27,383	66,760	
06-8220		8911	Elig Technician I	PT	A	GP	Juneau	205	13 F / G	9.0		37,987	1,547	0	27,437	66,971	
06-8225		8912	Elig Technician II	FT	A	GP	Wasilla	200	14 F / G	12.0		51,774	2,108	0	36,984	90,866	45,978
06-8226		8913	Elig Technician II	FT	A	GP	Anchorage	200	14 J	12.0		55,524	2,261	0	38,324	96,109	48,631
06-8227		8914	Elig Technician II	FT	A	GP	Kenai	200	14 C	12.0		64,344	2,620	0	41,474	108,438	54,870
06-8228		8915	Elig Technician II	FT	A	GP	Wasilla	200	14 B / C	12.0		44,871	1,827	0	34,518	81,216	41,095
06-8229		8916	Elig Technician II	FT	A	GP	Anchorage	200	14 A / B	12.0		44,439	1,809	0	34,364	80,612	40,790

Note: If a position is split, an asterisk (*) will appear in the Split/Count column. If the split position is also counted in the component, two asterisks (**) will appear in this column.
 [No valid job title] appearing in the Job Class Title indicates that the PCN has an invalid class code or invalid range for the class code effective date of this scenario.

Personal Services Expenditure Detail (1445)

Department of Health and Social Services

Scenario: FY2020 Governor Amended (15636)
Component: Public Assistance Field Services (236)
RDU: Public Assistance (73)

Status	PCN	Tracking ID	Job Class Title	Time Status	Retire Code	Barg Unit	Location	Salary Sched	Range / Steps	Comp Months	Split / Count	Annual Salaries	COLA	Premium Pay	Annual Benefits	Total Costs	UGF Amount
06-8230		8917	Elig Technician II	FT	A	GP	Nome	99	14 N	12.0		88,152	3,589	0	49,978	141,719	71,710
06-8231		8918	Elig Technician II	FT	A	GP	Wasilla	200	14 D / E	12.0		48,696	1,983	0	35,885	86,564	43,801
06-8235		8922	Eligibility Office Manager II	FT	A	SS	Fairbanks	203	19 B / C	12.0		73,389	0	0	45,045	118,434	63,481
06-8236		8923	Elig Technician II	FT	A	GP	Fairbanks	99	14 O / O	12.0		68,340	2,783	0	42,901	114,024	57,696
06-8237		8924	Office Assistant I	FT	A	GP	Wasilla	200	8 B / C	12.0		31,791	1,294	0	29,846	62,931	33,731
06-8238		8925	Office Assistant I	FT	A	GP	Wasilla	200	8 D / E	12.0		32,988	1,343	0	30,274	64,605	34,628
06-8239		8926	Elig Technician II	FT	A	GP	Anchorage	200	14 A / B	12.0		44,685	1,819	0	34,452	80,956	40,964
06-8242		8928	Elig Technician II	FT	A	GP	Anchorage	200	14 G	12.0		53,292	2,170	0	37,526	92,988	47,052
06-8243		8929	Office Assistant II	FT	A	GP	Juneau	205	10 B / C	12.0		37,349	1,521	0	31,831	70,701	9,898
06-8244		8930	Elig Technician II	FT	A	GP	Anchorage	200	14 A / B	12.0		44,808	1,824	0	34,496	81,128	41,051
06-8245		8931	Elig Technician II	FT	A	GP	Anchorage	200	14 C / D	12.0		46,824	1,906	0	35,216	83,946	42,477
06-8247		8933	Office Assistant IV	FT	A	SS	Anchorage	600	12 B / C	12.0		44,004	0	0	34,549	78,553	42,104
06-8248		8934	Office Assistant I	FT	A	GP	Anchorage	200	8 K	12.0		38,724	1,577	0	32,323	72,624	38,926
06-8251		8936	Elig Technician II	FT	A	GP	Wasilla	200	14 A / B	12.0		43,640	1,777	0	34,079	79,496	40,225
06-8252		8937	Elig Technician II	FT	A	GP	Ketchikan	200	14 C / D	12.0		47,040	1,915	0	35,293	84,248	42,629
06-8253		8938	Elig Technician II	FT	A	GP	Anchorage	200	14 A / B	12.0		43,394	1,767	0	33,991	79,152	40,051
06-8257		8939	Elig Technician II	FT	A	GP	Anchorage	200	14 D / E	12.0		48,120	1,959	0	35,679	85,758	43,394
06-8258		8940	Elig Technician II	FT	A	GP	Anchorage	200	14 A / B	12.0		43,701	1,779	0	34,100	79,580	40,267
06-8259		8941	Elig Technician II	FT	A	GP	Anchorage	200	14 C / D	12.0		46,392	1,889	0	35,062	83,343	42,172
06-8260		8942	Elig Technician II	FT	A	GP	Fairbanks	203	14 L / M	12.0		62,198	2,532	0	40,707	105,437	53,351
06-8261		8943	Elig Technician II	FT	A	GP	Fairbanks	203	14 K	12.0		59,040	2,404	0	39,579	101,023	51,118
06-8264		8945	Office Assistant I	FT	A	GP	Anchorage	200	8 E / F	12.0		33,870	1,379	0	30,589	65,838	35,289
06-8265		8946	Office Assistant IV	FT	A	SS	Anchorage	600	12 D / E	12.0		47,844	0	0	35,920	83,764	44,898
06-8266		8947	Office Assistant I	FT	A	GP	Anchorage	200	8 A / B	12.0		30,207	1,230	0	29,280	60,717	32,544
06-8267		8948	Office Assistant II	FT	A	GP	Anchorage	200	10 A / B	12.0		33,870	1,379	0	30,589	65,838	35,289
06-8268		8949	Office Assistant I	FT	A	GP	Anchorage	200	8 E / F	12.0		33,870	1,379	0	30,589	65,838	35,289
06-8269		8950	Elig Technician IV	FT	A	SS	Anchorage	200	17 F	12.0		70,704	0	0	44,086	114,790	61,527
06-8271		8951	Office Assistant I	FT	A	GP	Anchorage	200	8 A / B	12.0		30,900	1,258	0	29,528	61,686	33,064
06-8272		8952	Administrative Assistant II	FT	A	GP	Anchorage	200	14 K	12.0		57,324	2,334	0	38,966	98,624	52,862

Note: If a position is split, an asterisk (*) will appear in the Split/Count column. If the split position is also counted in the component, two asterisks (**) will appear in this column.
 [No valid job title] appearing in the Job Class Title indicates that the PCN has an invalid class code or invalid range for the class code effective date of this scenario.

Personal Services Expenditure Detail (1445)

Department of Health and Social Services

Scenario: FY2020 Governor Amended (15636)
Component: Public Assistance Field Services (236)
RDU: Public Assistance (73)

Status	PCN	Tracking ID	Job Class Title	Time Status	Retire Code	Barg Unit	Location	Salary Sched	Range / Steps	Comp Months	Split / Count	Annual Salaries	COLA	Premium Pay	Annual Benefits	Total Costs	UGF Amount
06-8273		8953	Office Assistant I	FT	A	GP	Anchorage	200	8 C / D	12.0		32,868	1,338	0	30,231	64,437	34,538
06-8274		8954	Office Assistant I	FT	A	GP	Ketchikan	200	8 A / B	12.0		30,645	1,248	0	29,437	61,330	32,873
06-8275		8955	Administrative Assistant II	FT	A	GP	Fairbanks	203	14 F / G	12.0		53,326	2,171	0	37,538	93,035	49,867
06-8276		8956	Office Assistant II	FT	A	GP	Fairbanks	203	10 K / L	12.0		46,379	1,888	0	35,057	83,324	44,662
06-8277		8957	Office Assistant II	FT	A	GP	Anchorage	200	10 G / J	12.0		40,748	1,659	0	33,046	75,453	40,443
06-8278		8958	Elig Technician II	FT	A	GP	Anchorage	200	14 B / C	12.0		45,753	1,863	0	34,833	82,449	41,719
06-8279		8959	Office Assistant I	FT	A	GP	Fairbanks	203	8 A / B	12.0		31,824	1,296	0	29,858	62,978	33,756
06-8280		8960	Office Assistant II	FT	A	GP	Nome	237	10 B / C	12.0		47,925	1,951	0	35,609	85,485	45,820
06-8281		8961	Office Assistant I	FT	A	GP	Fairbanks	203	8 A / B	12.0		30,999	1,262	0	29,563	61,824	33,138
06-8282		8962	Office Assistant I	FT	A	GP	Anchorage	200	8 B / C	12.0		31,346	1,276	0	29,687	62,309	33,398
06-8284		8964	Elig Technician II	FT	A	GP	Wasilla	200	14 B / C	12.0		45,123	1,837	0	34,608	81,568	41,273
06-8285		8965	Elig Technician II	FT	A	GP	Kenai	200	14 G	12.0		53,292	2,170	0	37,526	92,988	47,052
06-8286		8966	Elig Technician II	FT	A	GP	Kenai	200	14 J	12.0		55,524	2,261	0	38,324	96,109	48,631
06-8287		8967	Elig Technician II	FT	A	GP	Kenai	200	14 K / L	12.0		57,479	2,340	0	39,022	98,841	50,014
06-8288		8968	Office Assistant I	FT	A	GP	Kenai	200	8 B / C	12.0		31,062	1,265	0	29,586	61,913	33,185
06-8289		8969	Office Assistant I	FT	A	GP	Kenai	200	8 F	12.0		34,836	1,418	0	30,934	67,188	36,013
06-8290		8970	Elig Technician I	PT	A	GP	Juneau	205	13 D / E	9.0		36,477	1,485	0	26,897	64,859	
06-8291		8971	Elig Technician I	PT	A	GP	Juneau	205	13 G	9.0		39,195	1,596	0	27,868	68,659	
06-8292		8972	Elig Technician I	PT	A	GP	Juneau	205	13 B	9.0		32,958	1,342	0	25,640	59,940	
06-8293		8973	Elig Technician I	PT	A	GP	Juneau	205	13 K	9.0		42,147	1,716	0	28,923	72,786	
06-8294		8974	Office Assistant II	FT	A	GP	Juneau	205	10 B / C	12.0		37,761	1,537	0	31,979	71,277	9,979
06-8295		8975	Elig Technician II	FT	A	GP	Anchorage	200	14 K	12.0		57,324	2,334	0	38,966	98,624	49,904
06-8299		8977	Elig Technician II	FT	A	GP	Anchorage	200	14 A / B	12.0		44,808	1,824	0	34,496	81,128	41,051
06-8300		8978	Elig Technician II	FT	A	GP	Anchorage	200	14 A / B	12.0		44,747	1,822	0	34,474	81,043	41,008
06-8301		8979	Elig Technician II	FT	A	GP	Anchorage	200	14 D / E	12.0		49,776	2,027	0	36,270	88,073	44,565
06-8302		8980	Elig Technician II	FT	A	GP	Anchorage	200	14 G	12.0		53,292	2,170	0	37,526	92,988	47,052
06-8303		8981	Eligibility Office Manager I	FT	A	SS	Bethel	250	18 B	12.0		99,168	0	0	54,253	153,421	82,234
06-8304		8982	Elig Technician IV	FT	A	SS	Anchorage	200	17 Q / R	12.0		95,194	0	0	52,834	148,028	79,343
06-8305		8983	Elig Technician II	FT	A	GP	Anchorage	200	14 F / G	12.0		51,843	2,111	0	37,009	90,963	46,027

Note: If a position is split, an asterisk (*) will appear in the Split/Count column. If the split position is also counted in the component, two asterisks (**) will appear in this column.
 [No valid job title] appearing in the Job Class Title indicates that the PCN has an invalid class code or invalid range for the class code effective date of this scenario.

Personal Services Expenditure Detail (1445)

Department of Health and Social Services

Scenario: FY2020 Governor Amended (15636)
Component: Public Assistance Field Services (236)
RDU: Public Assistance (73)

Status	PCN	Tracking ID	Job Class Title	Time Status	Retire Code	Barg Unit	Location	Salary Sched	Range / Steps	Comp Months	Split / Count	Annual Salaries	COLA	Premium Pay	Annual Benefits	Total Costs	UGF Amount
06-8307		8984	Elig Technician II	FT	A	GP	Anchorage	200	14 A / B	12.0		44,808	1,824	0	34,496	81,128	41,051
06-8308		8985	Training Specialist II	FT	A	GP	Anchorage	200	18 B / C	12.0		59,546	2,424	0	39,760	101,730	54,527
06-8309		8986	Training Specialist II	FT	A	GP	Anchorage	200	18 J / K	12.0		73,785	3,004	0	44,846	121,635	65,196
06-8310		8987	Elig Technician II	FT	A	GP	Anchorage	200	14 D / E	12.0		48,120	1,959	0	35,679	85,758	43,394
06-8311		8988	Elig Technician II	FT	A	GP	Anchorage	200	14 D / E	12.0		48,984	1,994	0	35,987	86,965	44,004
06-8313		8989	Elig Technician II	FT	A	GP	Wasilla	200	14 A / B	12.0		43,701	1,779	0	34,100	79,580	40,267
06-8315		8990	Elig Technician IV	FT	A	SS	Fairbanks	203	17 N / O	12.0		88,774	0	0	50,540	139,314	74,672
06-8316		8991	Elig Technician III	FT	A	GP	Fairbanks	203	16 G	12.0		63,264	2,576	0	41,088	106,928	57,313
06-8317		8992	Elig Technician III	FT	A	GG	Bethel	250	16 N / N	12.0		110,616	4,504	0	58,002	173,122	92,793
06-8318		8993	Elig Technician II	FT	A	GP	Fairbanks	203	14 J	12.0		57,192	2,329	0	38,919	98,440	49,811
06-8319		8994	Elig Technician III	FT	A	GP	Anchorage	99	16 L / L	12.0		67,888	2,764	0	42,740	113,392	60,778
06-8320		8995	Elig Technician II	FT	A	GP	Kenai	200	14 D / E	12.0		49,416	2,012	0	36,142	87,570	44,310
06-8321		8996	Elig Technician II	FT	A	GP	Kenai	200	14 D / E	12.0		49,416	2,012	0	36,142	87,570	44,310
06-8322		8997	Elig Technician II	FT	A	GP	Wasilla	200	14 G / J	12.0		55,338	2,253	0	38,257	95,848	48,499
06-8323		8998	Elig Technician II	FT	A	GP	Bethel	250	14 G	12.0		79,944	3,255	0	47,046	130,245	65,904
06-8324		8999	Elig Technician III	FT	A	GP	Ketchikan	200	16 C / D	12.0		53,543	2,180	0	37,616	93,339	50,030
06-8325		9000	Elig Technician II	FT	A	GP	Ketchikan	200	14 F	12.0		51,636	2,102	0	36,935	90,673	45,881
06-8326		9001	Elig Technician II	FT	A	GP	Ketchikan	200	14 G / J	12.0		54,501	2,219	0	37,958	94,678	47,907
06-8328		9002	Elig Technician II	FT	A	GP	Anchorage	200	14 D / E	12.0		48,912	1,992	0	35,962	86,866	43,954
TI 06-8329		9003	Public Assist Analyst II	FT	A	GP	Anchorage	200	18 G / J	12.0		71,412	2,908	0	43,999	118,319	59,160
06-8330		9004	Office Assistant II	FT	A	GP	Ketchikan	200	10 A / B	12.0		34,836	1,418	0	30,934	67,188	36,013
06-8331		9005	Elig Technician IV	FT	A	SS	Kenai	200	17 F	12.0		70,704	0	0	44,086	114,790	61,527
06-8332		9006	Office Assistant IV	FT	A	SS	Juneau	605	12 A / B	12.0		45,419	0	0	35,054	80,473	43,134
06-8333		9007	Elig Technician II	FT	A	GP	Anchorage	200	14 B / C	12.0		44,934	1,830	0	34,541	81,305	41,140
06-8334		9008	Office Assistant II	FT	A	GP	Homer	200	10 A / B	12.0		34,164	1,391	0	30,694	66,249	35,509
06-8335		9009	Office Assistant I	FT	A	GG	Fairbanks	99	8 P / P	12.0		46,880	1,909	0	35,236	84,025	45,037
06-8336		9010	Office Assistant I	FT	A	GP	Anchorage	200	8 B / C	12.0		31,751	1,293	0	29,832	62,876	33,702
06-8337		9011	Office Assistant I	FT	A	GP	Ketchikan	200	8 B / C	12.0		31,872	1,298	0	29,875	63,045	33,792
06-8338		9012	Office Assistant I	FT	A	GP	Juneau	205	8 A / B	12.0		31,717	1,291	0	29,820	62,828	33,676

Note: If a position is split, an asterisk (*) will appear in the Split/Count column. If the split position is also counted in the component, two asterisks (**) will appear in this column.
 [No valid job title] appearing in the Job Class Title indicates that the PCN has an invalid class code or invalid range for the class code effective date of this scenario.

Personal Services Expenditure Detail (1445)

Department of Health and Social Services

Scenario: FY2020 Governor Amended (15636)
 Component: Public Assistance Field Services (236)
 RDU: Public Assistance (73)

Status	PCN	Tracking ID	Job Class Title	Time Status	Retire Code	Barg Unit	Location	Salary Sched	Range / Steps	Comp Months	Split / Count	Annual Salaries	COLA	Premium Pay	Annual Benefits	Total Costs	UGF Amount
06-8339		9013	Office Assistant III	FT	A	GP	Anchorage	200	11 J	12.0		45,132	1,838	0	34,611	81,581	43,727
06-8341		1071	Office Assistant II	FT	A	GP	Wasilla	200	10 D / E	12.0		37,112	1,511	0	31,747	70,370	37,718
06-8342		9015	Office Assistant I	FT	A	GP	Wasilla	200	8 B / C	12.0		31,062	1,265	0	29,586	61,913	33,185
06-8347		9020	Elig Technician II	FT	A	GP	Ketchikan	99	14 N / N	12.0		63,084	2,569	0	41,024	106,677	53,979
06-8348		9021	Elig Technician II	FT	A	GG	Anchorage	99	14 N / N	12.0		49,776	2,027	0	36,270	88,073	44,565
06-8366		9027	Office Assistant IV	FT	A	SS	Wasilla	600	12 E	12.0		47,844	0	0	35,920	83,764	44,898
06-8368		9028	Elig Technician IV	FT	A	SS	Anchorage	200	17 B / C	12.0		61,702	0	0	40,870	102,572	54,979
06-8369		9029	Office Assistant II	FT	A	GP	Bethel	250	10 G	12.0		60,912	2,480	0	40,248	103,640	55,551
06-8375		9030	Elig Technician II	FT	A	GP	Wasilla	200	14 G	12.0		53,292	2,170	0	37,526	92,988	47,052
06-8376		9031	Office Assistant I	FT	A	GP	Anchorage	200	8 G	12.0		36,012	1,466	0	31,354	68,832	36,894
06-8377		9032	Elig Technician II	FT	A	GP	Wasilla	200	14 A / B	12.0		43,824	1,784	0	34,144	79,752	40,355
06-8378		9033	Elig Technician III	FT	A	GG	Wasilla	99	16 O / O	12.0		76,884	3,130	0	45,953	125,967	67,518
06-8380		9034	Elig Technician II	FT	A	GP	Juneau	205	14 C	12.0		48,636	1,980	0	35,863	86,479	43,758
06-8383		9036	Elig Technician II	FT	A	GP	Kenai	99	14 K / K	12.0		57,324	2,334	0	38,966	98,624	49,904
06-8384		9037	Eligibility Office Manager II	FT	A	SS	Wasilla	99	19 L / L	12.0		93,267	0	0	52,145	145,412	77,941
06-8385		9038	Elig Technician III	FT	A	GG	Anchorage	99	16 M / M	12.0		71,424	2,908	0	44,003	118,335	63,428
06-8387		9039	Employ Serv Tech II	FT	A	GG	Fairbanks	203	15 O / P	12.0		81,588	3,322	0	47,634	132,544	
06-8390		9041	Office Assistant II	FT	A	GG	Anchorage	200	10 A / B	12.0		34,794	1,417	0	30,919	67,130	35,982
06-8391		9042	Elig Technician II	FT	A	GP	Nome	237	14 G / J	12.0		73,518	2,993	0	44,751	121,262	61,359
06-8392		9043	Elig Technician II	FT	A	GP	Anchorage	200	14 B / C	12.0		44,997	1,832	0	34,563	81,392	41,184
06-8399		9048	Public Assist Analyst I	FT	A	GP	Anchorage	200	16 E / F	12.0		58,356	2,376	0	39,335	100,067	53,636
06-8403		9051	Office Assistant II	FT	A	GP	Kodiak	211	10 A / B	12.0		38,432	1,565	0	32,218	72,215	38,707
06-8404		9052	Elig Technician II	FT	A	GP	Juneau	205	14 C / D	12.0		48,787	1,986	0	35,917	86,690	43,865
06-8405		9053	Elig Technician II	FT	A	GP	Anchorage	200	14 C / D	12.0		47,400	1,930	0	35,422	84,752	42,885
06-8408		9055	Elig Technician II	FT	A	GP	Fairbanks	203	14 C / D	12.0		49,488	2,015	0	36,167	87,670	44,361
06-8409		9056	Elig Technician II	FT	A	GP	Anchorage	200	14 D / E	12.0		48,408	1,971	0	35,782	86,161	43,597
06-8414		9061	Public Assist Analyst I	FT	A	GP	Anchorage	200	16 F / G	12.0		69,963	2,849	0	43,481	116,293	62,333
06-8416		9062	Elig Technician II	FT	A	GP	Anchorage	200	14 B / C	12.0		45,249	1,842	0	34,653	81,744	41,362
06-8417		9063	Elig Technician III	FT	A	GP	Kenai	200	16 C / D	12.0		54,211	2,207	0	37,854	94,272	50,530

Note: If a position is split, an asterisk (*) will appear in the Split/Count column. If the split position is also counted in the component, two asterisks (**) will appear in this column.
 [No valid job title] appearing in the Job Class Title indicates that the PCN has an invalid class code or invalid range for the class code effective date of this scenario.

Personal Services Expenditure Detail (1445)

Department of Health and Social Services

Scenario: FY2020 Governor Amended (15636)
 Component: Public Assistance Field Services (236)
 RDU: Public Assistance (73)

Status	PCN	Tracking ID	Job Class Title	Time Status	Retire Code	Barg Unit	Location	Salary Sched	Range / Steps	Comp Months	Split / Count	Annual Salaries	COLA	Premium Pay	Annual Benefits	Total Costs	UGF Amount
06-8418		9064	Elig Technician II	FT	A	GP	Anchorage	200	14 A / B	12.0		43,578	1,774	0	34,056	79,408	40,180
06-8419		9065	Elig Technician III	FT	A	GP	Anchorage	200	16 F / G	12.0		61,416	2,501	0	40,428	104,345	55,929
06-8420		9066	Elig Technician II	FT	A	GP	Fairbanks	203	14 J	12.0		57,192	2,329	0	38,919	98,440	49,811
06-8421		9067	Elig Technician II	FT	A	GP	Bethel	99	14 M	12.0		96,516	3,930	0	52,966	153,412	77,626
06-8422		9068	Training Specialist II	FT	A	GP	Anchorage	200	18 D / E	12.0		64,129	2,611	0	41,397	108,137	57,961
06-8423		9069	Elig Technician II	FT	A	GP	Wasilla	200	14 A / B	12.0		43,578	1,774	0	34,056	79,408	40,180
06-8424		9070	Elig Technician II	FT	A	GP	Wasilla	200	14 E / F	12.0		50,474	2,055	0	36,520	89,049	45,059
06-8425		9071	Elig Technician II	FT	A	GP	Anchorage	200	14 D / E	12.0		48,120	1,959	0	35,679	85,758	43,394
06-8430		9074	Office Assistant I	FT	A	GP	Wasilla	200	8 A / B	12.0		30,170	1,228	0	29,267	60,665	32,516
06-8431		9075	Elig Technician IV	FT	A	SS	Anchorage	200	17 E	12.0		68,304	0	0	43,228	111,532	59,781
06-8432		9076	Elig Technician III	FT	A	GP	Anchorage	200	16 F	12.0		59,376	2,418	0	39,699	101,493	54,400
06-8433		9077	Elig Technician III	FT	A	GP	Anchorage	200	16 B / C	12.0		51,981	2,116	0	37,058	91,155	48,859
06-8434		9078	Elig Technician II	FT	A	GP	Fairbanks	203	14 F / G	12.0		54,746	2,229	0	38,046	95,021	48,081
06-8435		9079	Elig Technician II	FT	A	GP	Anchorage	200	14 E / F	12.0		50,396	2,052	0	36,492	88,940	45,004
06-8436		9080	Elig Technician II	FT	A	GP	Wasilla	200	14 K	12.0		57,324	2,334	0	38,966	98,624	49,904
06-8437		9081	Elig Technician II	FT	A	GP	Anchorage	200	14 D / E	12.0		49,776	2,027	0	36,270	88,073	44,565
06-8438		9082	Elig Technician II	FT	A	GP	Wasilla	200	14 E / F	12.0		51,559	2,099	0	36,907	90,565	45,826
06-8439		9083	Elig Technician II	FT	A	GP	Anchorage	200	14 A / B	12.0		44,808	1,824	0	34,496	81,128	41,051
06-8440		9084	Elig Technician II	FT	A	GP	Anchorage	200	14 A / B	12.0		43,640	1,777	0	34,079	79,496	40,225
06-8441		9085	Elig Technician II	FT	A	GP	Fairbanks	203	14 A / B	12.0		45,390	1,848	0	34,704	81,942	41,463
06-8442		9086	Elig Technician IV	FT	A	SS	Fairbanks	99	17 F / J	12.0		78,900	0	0	47,013	125,913	67,489
06-8443		9087	Elig Technician II	FT	A	GP	Fairbanks	203	14 F / G	12.0		53,255	2,168	0	37,513	92,936	47,026
06-8444		9088	Elig Technician II	FT	A	GP	Fairbanks	99	14 M	12.0		61,560	2,506	0	40,480	104,546	52,900
06-8445		9089	Elig Technician II	FT	A	GP	Fairbanks	203	14 C / D	12.0		49,414	2,012	0	36,141	87,567	44,309
06-8446		9090	Elig Technician II	FT	A	GP	Fairbanks	203	14 A / B	12.0		45,390	1,848	0	34,704	81,942	41,463
06-8449		9091	Elig Technician II	FT	A	GP	Nome	237	14 D / E	12.0		66,117	2,692	0	42,107	110,916	56,124
06-8451		9092	Elig Technician II	FT	A	GP	Bethel	250	14 A / B	12.0		66,384	2,703	0	42,203	111,290	56,313
06-8453		9093	Elig Technician II	FT	A	GP	Kenai	200	14 D / E	12.0		48,912	1,992	0	35,962	86,866	43,954
06-8454		9094	Office Assistant I	FT	A	GP	Wasilla	200	8 E / F	12.0		34,290	1,396	0	30,739	66,425	35,604

Note: If a position is split, an asterisk (*) will appear in the Split/Count column. If the split position is also counted in the component, two asterisks (**) will appear in this column.
 [No valid job title] appearing in the Job Class Title indicates that the PCN has an invalid class code or invalid range for the class code effective date of this scenario.

Personal Services Expenditure Detail (1445)

Department of Health and Social Services

Scenario: FY2020 Governor Amended (15636)
 Component: Public Assistance Field Services (236)
 RDU: Public Assistance (73)

Status	PCN	Tracking ID	Job Class Title	Time Status	Retire Code	Barg Unit	Location	Salary Sched	Range / Steps	Comp Months	Split / Count	Annual Salaries	COLA	Premium Pay	Annual Benefits	Total Costs	UGF Amount
06-8455		9095	Elig Technician I	PT	A	GP	Juneau	205	13 B	9.0		32,958	1,342	0	25,640	59,940	
06-8456		9096	Elig Technician II	FT	A	GP	Juneau	205	14 G	12.0		55,956	2,278	0	38,478	96,712	48,936
06-8457		9097	Elig Technician II	FT	A	GP	Wasilla	200	14 C / D	12.0		47,904	1,950	0	35,602	85,456	43,241
06-8458		9098	Elig Technician II	FT	A	GP	Wasilla	200	14 G	12.0		53,292	2,170	0	37,526	92,988	47,052
06-8459		9099	Office Assistant I	FT	A	GP	Wasilla	200	8 B / C	12.0		31,751	1,293	0	29,832	62,876	33,702
06-8460		9100	Elig Technician II	FT	A	GP	Anchorage	200	14 E / F	12.0		51,559	2,099	0	36,907	90,565	45,826
06-8461		9101	Elig Technician II	FT	A	GP	Anchorage	200	14 A / B	12.0		43,640	1,777	0	34,079	79,496	40,225
06-8462		9102	Elig Technician II	FT	A	GP	Anchorage	200	14 G / J	12.0		54,501	2,219	0	37,958	94,678	47,907
06-8463		9103	Elig Technician IV	FT	A	SS	Anchorage	200	17 E	12.0		68,304	0	0	43,228	111,532	59,781
06-8464		9104	Elig Technician II	FT	A	GP	Wasilla	200	14 E / F	12.0		51,559	2,099	0	36,907	90,565	45,826
06-8465		9105	Elig Technician II	FT	A	GP	Wasilla	200	14 C / D	12.0		46,752	1,904	0	35,190	83,846	42,426
06-8467		9107	Office Assistant I	FT	A	GP	Kenai	200	8 B / C	12.0		31,062	1,265	0	29,586	61,913	33,185
06-8468		9108	Elig Technician II	FT	A	GP	Ketchikan	200	14 G / J	12.0		53,385	2,174	0	37,559	93,118	47,118
06-8469		9109	Elig Technician II	FT	A	GP	Wasilla	200	14 L / L	12.0		59,184	2,410	0	39,631	101,225	51,220
06-8470		9110	Office Assistant II	FT	A	GP	Anchorage	200	10 D / E	12.0		37,296	1,519	0	31,812	70,627	37,856
06-8471		9111	Elig Technician II	FT	A	GP	Anchorage	200	14 C / D	12.0		58,236	2,371	0	39,292	99,899	50,549
06-8472		9112	Elig Technician II	FT	A	GP	Anchorage	99	14 N / N	12.0		64,020	2,607	0	41,358	107,985	54,640
06-8473		9113	Elig Technician II	FT	A	GP	Kenai	200	14 G / J	12.0		55,431	2,257	0	38,290	95,978	48,565
06-8474		9114	Elig Technician II	FT	A	GP	Anchorage	99	14 M / M	12.0		59,328	2,416	0	39,682	101,426	51,322
06-8475		9115	Elig Technician II	FT	A	GP	Anchorage	200	14 D / E	12.0		48,408	1,971	0	35,782	86,161	43,597
06-8476		9116	Office Assistant I	FT	A	GP	Anchorage	200	8 A / B	12.0		30,645	1,248	0	29,437	61,330	32,873
06-8477		9117	Elig Technician II	FT	A	GP	Anchorage	200	14 C / D	12.0		47,256	1,924	0	35,370	84,550	42,782
06-8478		9118	Elig Technician II	FT	A	GP	Fairbanks	203	14 C / D	12.0		49,414	2,012	0	36,141	87,567	44,309
06-8479		9119	Elig Technician II	FT	A	GP	Fairbanks	203	14 D / E	12.0		49,636	2,021	0	36,220	87,877	44,466
06-8480		9120	Elig Technician II	FT	A	GP	Fairbanks	203	14 L / M	12.0		62,693	2,553	0	40,884	106,130	53,702
06-8481		9121	Elig Technician II	FT	A	GP	Wasilla	200	14 A / B	12.0		43,824	1,784	0	34,144	79,752	40,355
06-8482		9122	Elig Technician II	FT	A	GP	Kenai	200	14 F	12.0		51,636	2,102	0	36,935	90,673	45,881
06-8483		9123	Elig Technician II	FT	A	GP	Anchorage	200	14 G / J	12.0		53,850	2,193	0	37,726	93,769	47,447
06-8484		9124	Elig Technician II	FT	A	GP	Wasilla	200	14 A	12.0		43,332	1,764	0	33,969	79,065	40,007

Note: If a position is split, an asterisk (*) will appear in the Split/Count column. If the split position is also counted in the component, two asterisks (**) will appear in this column.
 [No valid job title] appearing in the Job Class Title indicates that the PCN has an invalid class code or invalid range for the class code effective date of this scenario.

Personal Services Expenditure Detail (1445)

Department of Health and Social Services

Scenario: FY2020 Governor Amended (15636)
 Component: Public Assistance Field Services (236)
 RDU: Public Assistance (73)

Status	PCN	Tracking ID	Job Class Title	Time Status	Retire Code	Barg Unit	Location	Salary Sched	Range / Steps	Comp Months	Split / Count	Annual Salaries	COLA	Premium Pay	Annual Benefits	Total Costs	UGF Amount
06-8486		9126	Elig Technician II	FT	A	GP	Anchorage	200	14 C / D	12.0		47,040	1,915	0	35,293	84,248	42,629
06-8488		9127	Elig Technician II	FT	A	GP	Wasilla	200	14 A / B	12.0		44,132	1,797	0	34,254	80,183	40,573
06-8498		9134	Elig Technician II	FT	A	GP	Anchorage	200	14 A / B	12.0		44,562	1,814	0	34,408	80,784	40,877
06-8499		9135	Elig Technician II	FT	A	GP	Anchorage	200	14 G / J	12.0		54,315	2,212	0	37,892	94,419	47,776
06-8500		9136	Elig Technician II	FT	A	GP	Anchorage	99	14 M	12.0		62,016	2,525	0	40,642	105,183	53,223
06-8501		9137	Elig Technician III	FT	A	GP	Kenai	200	16 F / G	12.0		61,246	2,494	0	40,367	104,107	55,801
06-8502		9138	Elig Technician II	FT	A	GP	Wasilla	200	14 C / D	12.0		46,464	1,892	0	35,087	83,443	42,222
06-8503		9139	Office Assistant I	FT	A	GP	Bethel	250	8 B / C	12.0		46,780	1,905	0	35,200	83,885	44,962
06-8504		9140	Elig Technician II	FT	A	GP	Juneau	205	14 A / B	12.0		45,827	1,866	0	34,860	82,553	41,772
06-8505		9141	Public Asst Fld Svcs Mgr II	FT	A	SS	Anchorage	99	21 M	12.0		105,864	0	0	56,645	162,509	87,105
06-8506		9142	Elig Technician II	FT	A	GP	Anchorage	200	14 C / D	12.0		46,608	1,898	0	35,139	83,645	42,324
06-8507		9143	Elig Technician IV	FT	A	SS	Anchorage	200	17 F / J	12.0		71,184	0	0	44,257	115,441	61,876
06-8508		9144	Elig Technician II	FT	A	GP	Kenai	200	14 K / L	12.0		58,642	2,388	0	39,437	100,467	50,836
06-8509		9145	Elig Technician II	FT	A	GP	Ketchikan	200	14 A / B	12.0		43,455	1,769	0	34,012	79,236	40,093
06-8510		9146	Elig Technician II	FT	A	GP	Anchorage	200	14 J / K	12.0		56,724	2,310	0	38,752	97,786	49,480
06-8511		9147	Elig Technician III	FT	A	GP	Anchorage	200	16 C / D	12.0		55,296	2,251	0	38,242	95,789	51,343
06-8512		9148	Elig Technician II	FT	A	GP	Wasilla	200	14 J	12.0		55,524	2,261	0	38,324	96,109	48,631
06-8513		9149	Elig Technician II	FT	A	GP	Wasilla	200	14 F	12.0		51,636	2,102	0	36,935	90,673	45,881
06-8514		9150	Elig Technician II	FT	A	GP	Anchorage	200	14 A / B	12.0		43,701	1,779	0	34,100	79,580	40,267
06-8515		9151	Administrative Assistant II	FT	A	GP	Ketchikan	200	14 G	12.0		53,292	2,170	0	37,526	92,988	49,842
06-8516		9152	Elig Technician II	FT	A	GP	Anchorage	200	14 G	12.0		53,292	2,170	0	37,526	92,988	47,052
06-8517		9153	Elig Technician II	FT	A	GP	Anchorage	200	14 A / B	12.0		43,517	1,772	0	34,035	79,324	40,138
06-8518		9154	Elig Technician II	FT	A	GP	Anchorage	200	14 G	12.0		53,292	2,170	0	37,526	92,988	47,052
06-8520		9156	Elig Technician II	FT	A	GP	Anchorage	200	14 G / J	12.0		55,152	2,246	0	38,191	95,589	48,368
06-8521		9157	Elig Technician III	FT	A	GP	Anchorage	200	16 K / L	12.0		66,215	2,696	0	42,142	111,053	59,524
06-8522		9158	Elig Technician II	FT	A	GP	Anchorage	200	14 B / C	12.0		45,186	1,840	0	34,631	81,657	41,318
06-8524		9160	Office Assistant I	FT	A	GP	Kenai	200	8 E / F	12.0		33,996	1,384	0	30,634	66,014	35,384
06-8525		9161	Elig Technician II	FT	A	GP	Homer	200	14 G / J	12.0		54,129	2,204	0	37,825	94,158	47,644
06-8526		9162	Elig Technician II	FT	A	GP	Kenai	200	14 K / L	12.0		59,107	2,407	0	39,603	101,117	51,165

Note: If a position is split, an asterisk (*) will appear in the Split/Count column. If the split position is also counted in the component, two asterisks (**) will appear in this column.
 [No valid job title] appearing in the Job Class Title indicates that the PCN has an invalid class code or invalid range for the class code effective date of this scenario.

Personal Services Expenditure Detail (1445)

Department of Health and Social Services

Scenario: FY2020 Governor Amended (15636)
 Component: Public Assistance Field Services (236)
 RDU: Public Assistance (73)

Status	PCN	Tracking ID	Job Class Title	Time Status	Retire Code	Barg Unit	Location	Salary Sched	Range / Steps	Comp Months	Split / Count	Annual Salaries	COLA	Premium Pay	Annual Benefits	Total Costs	UGF Amount
06-8527		9163	Elig Technician II	FT	A	GP	Wasilla	200	14 G	12.0		53,292	2,170	0	37,526	92,988	47,052
06-8528		9164	Elig Technician II	FT	A	GP	Wasilla	200	14 A / B	12.0		43,763	1,782	0	34,122	79,667	40,312
06-8533		9169	Public Assist Analyst I	FT	A	GP	Anchorage	200	16 J	12.0		63,960	2,604	0	41,337	107,901	57,835
06-8535		9171	Public Assist Analyst I	FT	A	GP	Anchorage	200	16 B / C	12.0		52,533	2,139	0	37,255	91,927	49,273
06-8537		9173	Office Assistant I	FT	A	GP	Wasilla	99	8 L / L	12.0		40,168	1,635	0	32,838	74,641	40,008
06-8540		9176	Elig Technician II	FT	A	GP	Fairbanks	203	14 G / J	12.0		57,000	2,321	0	38,851	98,172	49,675
06-8541		9177	Elig Technician II	FT	A	GP	Kenai	200	14 C / D	12.0		46,680	1,901	0	35,164	83,745	42,375
06-8545		9181	Elig Technician II	FT	A	GP	Wasilla	200	14 J / K	12.0		56,349	2,294	0	38,618	97,261	49,214
06-8546		9182	Elig Technician II	FT	A	GP	Anchorage	200	14 D / E	12.0		48,552	1,977	0	35,833	86,362	43,699
06-8547		9183	Elig Technician II	FT	A	GP	Fairbanks	203	14 E / F	12.0		52,704	2,146	0	37,316	92,166	46,636
06-8548		9184	Employ Serv Tech II	FT	A	GP	Fairbanks	203	15 O / P	12.0		84,648	3,447	0	48,727	136,822	
06-8554		9188	Social Svcs Prog Coord	FT	A	SS	Anchorage	200	20 D / E	12.0		81,294	0	0	47,869	129,163	69,231
06-8555		9189	Elig Technician II	FT	A	GP	Anchorage	200	14 E / F	12.0		49,854	2,030	0	36,298	88,182	44,620
06-8556		9190	Elig Technician II	FT	A	GP	Anchorage	200	14 B / C	12.0		46,257	1,883	0	35,013	83,153	42,075
06-8557		9191	Elig Technician II	FT	A	GP	Anchorage	200	14 D / E	12.0		48,408	1,971	0	35,782	86,161	43,597
06-8558		1073	Elig Technician II	FT	A	GP	Fairbanks	203	14 D / E	12.0		50,894	2,072	0	36,670	89,636	45,356
06-8559		9192	Elig Technician II	FT	A	GP	Anchorage	200	14 A / B	12.0		43,763	1,782	0	34,122	79,667	40,312
06-8560		9193	Elig Technician II	FT	A	GP	Fairbanks	203	14 G / J	12.0		56,136	2,286	0	38,542	96,964	49,064
06-8562		9195	Elig Technician II	FT	A	GP	Kenai	200	14 D / E	12.0		48,408	1,971	0	35,782	86,161	43,597
06-8563		9196	Elig Technician II	FT	A	GP	Wasilla	200	14 L / M	12.0		59,744	2,433	0	39,831	102,008	51,616
06-8564		9197	Elig Technician II	FT	A	GP	Wasilla	200	14 J / K	12.0		56,124	2,285	0	38,538	96,947	49,055
06-8565		9198	Elig Technician II	FT	A	GP	Wasilla	200	14 C / D	12.0		46,392	1,889	0	35,062	83,343	42,172
06-8566		9199	Elig Technician III	FT	A	GP	Fairbanks	203	16 J	12.0		65,880	2,682	0	42,023	110,585	59,274
06-8568		9201	Employ Serv Tech II	FT	A	GG	Fairbanks	203	15 M / N	12.0		78,636	3,202	0	46,579	128,417	
06-8569		9202	Elig Technician II	FT	A	GP	Juneau	205	14 C / D	12.0		48,787	1,986	0	35,917	86,690	43,865
06-8570		9203	Elig Technician II	FT	A	GP	Ketchikan	200	14 C / D	12.0		46,464	1,892	0	35,087	83,443	42,222
06-8571		9204	Elig Technician II	FT	A	GP	Wasilla	200	14 D / E	12.0		48,984	1,994	0	35,987	86,965	44,004
06-8580		9210	Public Assist Analyst I	FT	A	GP	Anchorage	200	16 J	12.0		63,960	2,604	0	41,337	107,901	57,835
06-8582		9212	Public Asst Fld Svcs Mgr II	FT	A	SS	Wasilla	200	21 B / C	12.0		81,897	0	0	48,084	129,981	69,670

Note: If a position is split, an asterisk (*) will appear in the Split/Count column. If the split position is also counted in the component, two asterisks (**) will appear in this column.
 [No valid job title] appearing in the Job Class Title indicates that the PCN has an invalid class code or invalid range for the class code effective date of this scenario.

Personal Services Expenditure Detail (1445)

Department of Health and Social Services

Scenario: FY2020 Governor Amended (15636)
 Component: Public Assistance Field Services (236)
 RDU: Public Assistance (73)

Status	PCN	Tracking ID	Job Class Title	Time Status	Retire Code	Barg Unit	Location	Salary Sched	Range / Steps	Comp Months	Split / Count	Annual Salaries	COLA	Premium Pay	Annual Benefits	Total Costs	UGF Amount
06-8583		9213	Elig Technician II	FT	A	GP	Anchorage	200	14 F	12.0		51,636	2,102	0	36,935	90,673	45,881
06-8584		9214	Elig Technician II	FT	A	GP	Bethel	250	14 B / C	12.0		68,346	2,783	0	42,904	114,033	57,701
06-8585		9215	Elig Technician II	FT	A	GP	Wasilla	200	14 G / J	12.0		55,059	2,242	0	38,157	95,458	48,302
06-8586		9216	Elig Technician II	FT	A	GP	Anchorage	200	14 F	12.0		51,636	2,102	0	36,935	90,673	45,881
06-8587		9217	Elig Technician II	FT	A	GP	Anchorage	200	14 J / K	12.0		56,049	2,282	0	38,511	96,842	49,002
06-8592		9219	Public Assist Analyst II	FT	A	GP	Anchorage	200	18 B / C	12.0		61,246	2,494	0	40,367	104,107	55,801
06-8593		9220	Office Assistant I	FT	A	GP	Fairbanks	103	8 Q / Q	12.0		48,832	1,988	0	35,933	86,753	46,500
06-8594		9221	Administrative Assistant II	FT	A	GP	Anchorage	200	14 G	12.0		53,292	2,170	0	37,526	92,988	49,842
06-8600		9227	Elig Technician IV	FT	A	SS	Anchorage	200	17 A / B	12.0		61,421	0	0	40,770	102,191	54,774
06-8601		9228	Office Assistant I	FT	A	GP	Anchorage	200	8 A / B	12.0		30,645	1,248	0	29,437	61,330	32,873
06-8602		9229	Elig Technician II	FT	A	GP	Anchorage	200	14 D / E	12.0		49,776	2,027	0	36,270	88,073	44,565
06-8603		9230	Elig Technician II	FT	A	GP	Anchorage	200	14 A / B	12.0		44,808	1,824	0	34,496	81,128	41,051
06-8604		9231	Elig Technician II	FT	A	GP	Anchorage	200	14 A / B	12.0		43,640	1,777	0	34,079	79,496	40,225
06-8605		9232	Elig Technician II	FT	A	GP	Anchorage	200	14 A / B	12.0		44,747	1,822	0	34,474	81,043	41,008
06-8606		9233	Elig Technician II	FT	A	GP	Wasilla	200	14 E / F	12.0		51,559	2,099	0	36,907	90,565	45,826
06-8607		9234	Elig Technician II	FT	A	GP	Anchorage	200	14 B / C	12.0		45,879	1,868	0	34,878	82,625	41,808
06-8608		9235	Elig Technician II	FT	A	GP	Anchorage	200	14 A / B	12.0		44,747	1,822	0	34,474	81,043	41,008
06-8609		9236	Elig Technician II	FT	A	GP	Anchorage	200	14 B / C	12.0		45,186	1,840	0	34,631	81,657	41,318
06-8610		9237	Elig Technician II	FT	A	GP	Anchorage	200	14 A / B	12.0		43,701	1,779	0	34,100	79,580	40,267
06-8611		9238	Elig Technician III	FT	A	GP	Anchorage	200	16 B / C	12.0		52,119	2,122	0	37,107	91,348	48,963
06-8612		9239	Eligibility Office Manager II	FT	A	SS	Anchorage	200	19 K / L	12.0		86,922	0	0	49,879	136,801	73,325
06-8613		9240	Training Specialist I	FT	A	GP	Anchorage	200	16 A / B	12.0		50,551	2,058	0	36,547	89,156	47,788
06-8617		9241	Elig Technician II	FT	A	GP	Anchorage	200	14 B / C	12.0		45,375	1,847	0	34,698	81,920	41,452
06-8618		9242	Elig Technician II	FT	A	GP	Wasilla	200	14 G	12.0		53,292	2,170	0	37,526	92,988	47,052
06-8619		9243	Office Assistant I	FT	A	GP	Anchorage	200	8 A / B	12.0		30,426	1,239	0	29,358	61,023	32,708
06-8621		9244	Elig Technician II	FT	A	GP	Ketchikan	200	14 D / E	12.0		48,480	1,974	0	35,807	86,261	43,648
06-8622		9245	Elig Technician II	FT	A	GP	Juneau	205	14 E / F	12.0		52,994	2,158	0	37,420	92,572	46,841
06-8627		9249	Elig Technician II	FT	A	GP	Anchorage	200	14 A / B	12.0		43,763	1,782	0	34,122	79,667	40,312
06-8628		9250	Elig Technician II	FT	A	GP	Anchorage	200	14 D / E	12.0		48,552	1,977	0	35,833	86,362	43,699

Note: If a position is split, an asterisk (*) will appear in the Split/Count column. If the split position is also counted in the component, two asterisks (**) will appear in this column.
 [No valid job title] appearing in the Job Class Title indicates that the PCN has an invalid class code or invalid range for the class code effective date of this scenario.

Personal Services Expenditure Detail (1445)

Department of Health and Social Services

Scenario: FY2020 Governor Amended (15636)
Component: Public Assistance Field Services (236)
RDU: Public Assistance (73)

Status	PCN	Tracking ID	Job Class Title	Time Status	Retire Code	Barg Unit	Location	Salary Sched	Range / Steps	Comp Months	Split / Count	Annual Salaries	COLA	Premium Pay	Annual Benefits	Total Costs	UGF Amount
	06-8629	9251	Elig Technician II	FT	A	GP	Anchorage	200	14 A / B	12.0		44,808	1,824	0	34,496	81,128	41,051
	06-8630	1044	Elig Technician III	FT	A	GP	Wasilla	200	16 A / B	12.0		52,104	2,121	0	37,102	91,327	48,951
	06-8631	1049	Elig Technician II	FT	A	GP	Wasilla	200	14 J / K	12.0		56,499	2,300	0	38,672	97,471	49,320
	06-8632	1050	Elig Technician II	FT	A	GP	Wasilla	200	14 B / C	12.0		45,249	1,842	0	34,653	81,744	41,362
	06-8633	1048	Office Assistant I	FT	A	GP	Wasilla	200	8 E / F	12.0		34,206	1,393	0	30,709	66,308	35,541
	06-8640	1061	Elig Technician II	FT	A	GP	Anchorage	200	14 A / B	12.0		43,701	1,779	0	34,100	79,580	40,267
	06-8641	1053	Elig Technician II	FT	A	GG	Wasilla	99	14 O	12.0		66,756	2,718	0	42,336	111,810	56,576
	06-8642	1054	Elig Technician II	FT	A	GP	Wasilla	200	14 K / L	12.0		59,029	2,403	0	39,575	101,007	51,110
TI	06-8646	6600	Project Assistant	FT	A	GP	Anchorage	200	16 D / E	12.0		57,336	2,335	0	38,971	98,642	
	06-8647	6601	Eligibility Office Manager I	FT	A	SS	Nome	237	18 D / E	12.0		99,852	0	0	54,497	154,349	82,731
	06-8648	6602	Employ Servs Mgr II	FT	A	SS	Anchorage	200	18 A / B	12.0		65,732	0	0	42,310	108,042	108,042
	06-8649	2450	Office Assistant I	FT	A	GP	Wasilla	200	8 B / C	12.0		31,022	1,263	0	29,571	61,856	33,155
	06-8650	2449	Office Assistant IV	FT	A	SS	Anchorage	600	12 B / C	12.0		43,524	0	0	34,377	77,901	41,755
	06-8651	2446	Elig Technician III	FT	A	GP	Anchorage	200	16 C / D	12.0		54,879	2,234	0	38,093	95,206	51,030
	06-8652	2447	Elig Technician II	FT	A	GP	Anchorage	200	14 A / B	12.0		43,763	1,782	0	34,122	79,667	40,312
	06-8653	2448	Elig Technician II	FT	A	GP	Anchorage	200	14 A / B	12.0		44,747	1,822	0	34,474	81,043	41,008
	06-8655	23856	Elig Technician II	FT	A	GP	Ketchikan	200	14 E / F	12.0		50,396	2,052	0	36,492	88,940	45,004
	06-8656	23857	Elig Technician II	FT	A	GP	Ketchikan	200	14 A / B	12.0		44,808	1,824	0	34,496	81,128	41,051
	06-8657	23858	Elig Technician II	FT	A	GP	Ketchikan	200	14 G	12.0		53,292	2,170	0	37,526	92,988	47,052
	06-8660	9408	Elig Technician II	FT	A	GP	Anchorage	200	14 D / E	12.0		48,912	1,992	0	35,962	86,866	43,954
	06-8661	23855	Elig Technician IV	FT	A	SS	Juneau	205	17 A / B	12.0		64,594	0	0	41,903	106,497	14,910
	06-8662	32603	Office Assistant II	FT	A	GG	Wasilla	100	10 C / D	12.0		37,320	1,520	0	31,821	70,661	70,661
	06-8663	32600	Elig Technician II	FT	A	GG	Wasilla	100	14 C / D	12.0		48,456	1,973	0	35,799	86,228	43,631
	06-8664	32602	Office Assistant II	FT	A	GG	Wasilla	100	10 C / D	12.0		37,320	1,520	0	31,821	70,661	70,661
	06-8665	32604	Office Assistant II	FT	A	GG	Wasilla	100	10 C / D	12.0		37,320	1,520	0	31,821	70,661	70,661
	06-8666	32591	Elig Technician II	FT	A	GG	Wasilla	100	14 C / D	12.0		48,456	1,973	0	35,799	86,228	43,631
	06-8667	32610	Elig Technician IV	FT	A	SS	Wasilla	200	17 C / D	12.0		66,108	0	0	42,444	108,552	108,552
	06-8668	32611	Elig Technician IV	FT	A	SS	Homer	200	17 C / D	12.0		66,108	0	0	42,444	108,552	108,552
	06-8669	32608	Elig Technician III	FT	A	GG	Wasilla	100	16 C / D	12.0		55,848	2,274	0	38,439	96,561	96,561

Note: If a position is split, an asterisk (*) will appear in the Split/Count column. If the split position is also counted in the component, two asterisks (**) will appear in this column.
 [No valid job title] appearing in the Job Class Title indicates that the PCN has an invalid class code or invalid range for the class code effective date of this scenario.

Personal Services Expenditure Detail (1445)

Department of Health and Social Services

Scenario: FY2020 Governor Amended (15636)
Component: Public Assistance Field Services (236)
RDU: Public Assistance (73)

Status	PCN	Tracking ID	Job Class Title	Time Status	Retire Code	Barg Unit	Location	Salary Sched	Range / Steps	Comp Months	Split / Count	Annual Salaries	COLA	Premium Pay	Annual Benefits	Total Costs	UGF Amount
06-8670		32607	Elig Technician II	FT	A	GG	Homer	200	14 C / D	12.0		48,048	1,956	0	35,653	85,657	43,342
06-8671		32606	Elig Technician II	FT	A	GG	Kodiak	211	14 C / D	12.0		53,328	2,171	0	37,539	93,038	47,077
06-8672		32592	Elig Technician II	FT	A	GG	Wasilla	200	14 C / D	12.0		48,048	1,956	0	35,653	85,657	43,342
06-8673		32594	Elig Technician II	FT	A	GG	Wasilla	200	14 C / D	12.0		48,048	1,956	0	35,653	85,657	43,342
06-8674		32593	Elig Technician II	FT	A	GG	Wasilla	200	14 C / D	12.0		48,048	1,956	0	35,653	85,657	43,342
06-8675		32595	Elig Technician II	FT	A	GG	Wasilla	100	14 C / D	12.0		48,456	1,973	0	35,799	86,228	43,631
06-8676		32596	Elig Technician II	FT	A	GG	Wasilla	100	14 C / D	12.0		48,456	1,973	0	35,799	86,228	43,631
06-8677		32597	Elig Technician II	FT	A	GG	Wasilla	100	14 C / D	12.0		48,456	1,973	0	35,799	86,228	43,631
06-8678		32598	Elig Technician II	FT	A	GG	Wasilla	100	14 C / D	12.0		48,456	1,973	0	35,799	86,228	43,631
06-8679		32599	Elig Technician II	FT	A	GG	Wasilla	100	14 C / D	12.0		48,456	1,973	0	35,799	86,228	43,631
06-8680		32601	Elig Technician II	FT	A	GG	Wasilla	100	14 C / D	12.0		48,456	1,973	0	35,799	86,228	43,631
06-8681		32609	Elig Technician III	FT	A	GG	Wasilla	100	16 C / D	12.0		55,848	2,274	0	38,439	96,561	96,561
07-5202		9727	Employ Serv Tech II	FT	A	GP	Wasilla	200	15 E / F	12.0		53,543	2,180	0	37,616	93,339	
07-5205		9728	Employ Serv Tech II	FT	A	GP	Wasilla	200	15 D / E	12.0		52,464	2,136	0	37,230	91,830	
07-5216		9733	Employ Serv Tech II	FT	A	GP	Fairbanks	203	15 B	12.0		68,640	2,795	0	43,009	114,444	
07-5234		9740	Employ Serv Tech III	FT	A	SS	Fairbanks	203	16 F / J	12.0		68,732	0	0	43,381	112,113	
07-5268		9749	Employ Serv Tech II	FT	A	GP	Wasilla	200	15 N / O	12.0		69,940	2,848	0	43,473	116,261	
07-5365		9779	Employ Serv Tech II	FT	A	GP	Wasilla	200	15 A / B	12.0		46,680	1,901	0	35,164	83,745	
07-5421		9790	Employ Serv Tech II	FT	A	GP	Kenai	200	15 A / B	12.0		47,976	1,953	0	35,627	85,556	
07-5434		9793	Employ Serv Tech II	FT	A	GP	Ketchikan	200	15 K / L	12.0		63,374	2,580	0	41,128	107,082	
07-5530		9828	Employ Serv Tech III	FT	A	SS	Wasilla	200	16 K / L	12.0		71,711	0	0	44,445	116,156	
07-5591		9857	Social Svcs Prog Coord	FT	A	GP	Anchorage	200	20 J	12.0		83,544	3,402	0	48,332	135,278	67,639
07-5789		9952	Employ Serv Tech II	FT	A	GP	Wasilla	200	15 B / C	12.0		49,416	2,012	0	36,142	87,570	
07-5830		9971	Employ Serv Tech II	FT	A	GP	Fairbanks	203	15 K / L	12.0		64,414	2,623	0	41,499	108,536	
07-5971		10063	Employ Serv Tech II	FT	A	GP	Nome	237	15 G	12.0		78,552	3,198	0	46,549	128,299	
07-5972		10064	Employ Serv Tech II	FT	A	GP	Nome	237	15 K / L	12.0		87,054	3,544	0	49,586	140,184	
07-5973		10065	Employ Serv Tech II	FT	A	GP	Nome	237	15 A / B	12.0		63,850	2,600	0	41,298	107,748	
07-5974		10066	Employ Serv Tech II	FT	A	GP	Fairbanks	203	15 C / D	12.0		68,733	2,799	0	43,042	114,574	
07-5976		10068	Employ Serv Tech II	FT	A	GP	Wasilla	200	15 B / C	12.0		48,336	1,968	0	35,756	86,060	

Note: If a position is split, an asterisk (*) will appear in the Split/Count column. If the split position is also counted in the component, two asterisks (**) will appear in this column.
 [No valid job title] appearing in the Job Class Title indicates that the PCN has an invalid class code or invalid range for the class code effective date of this scenario.

Personal Services Expenditure Detail (1445)

Department of Health and Social Services

Scenario: FY2020 Governor Amended (15636)
Component: Public Assistance Field Services (236)
RDU: Public Assistance (73)

Status	PCN	Tracking ID	Job Class Title	Time Status	Retire Code	Barg Unit	Location	Salary Sched	Range / Steps	Comp Months	Split / Count	Annual Salaries	COLA	Premium Pay	Annual Benefits	Total Costs	UGF Amount
07-5977		10069	Employ Serv Tech III	FT	A	SS	Kenai	200	16 F / J	12.0		67,888	0	0	43,080	110,968	
07-5979		10071	Elig Technician IV	FT	A	SS	Kenai	200	17 A / B	12.0		60,393	0	0	40,403	100,796	
07-5980		10072	Employ Serv Tech II	FT	A	GP	Kenai	200	15 L / M	12.0		63,968	2,605	0	41,340	107,913	
07-5981		10073	Employ Serv Tech II	FT	A	GP	Kenai	200	15 B / C	12.0		48,264	1,965	0	35,730	85,959	
07-5982		10074	Employ Serv Tech II	FT	A	GP	Kenai	200	15 C / D	12.0		51,404	2,093	0	36,852	90,349	
07-5983		10075	Employ Serv Tech II	FT	A	GP	Homer	200	15 A / B	12.0		48,048	1,956	0	35,653	85,657	
07-5999		10087	Employ Serv Tech II	FT	A	GP	Wasilla	200	15 F / G	12.0		55,891	2,276	0	38,455	96,622	
07-6000		10088	Elig Technician II	FT	A	GP	Anchorage	200	14 C	12.0		46,320	1,886	0	35,036	83,242	42,120
07-6029		24869	Employ Serv Tech II	FT	A	GG	Fairbanks	203	15 M / N	12.0		67,932	2,766	0	42,756	113,454	
21-3046		17742	Employ Serv Tech II	FT	A	GP	Fairbanks	203	15 G	12.0		59,052	2,404	0	39,584	101,040	

	Total Positions	New	Deleted	Total Salary Costs:	Total COLA:	Total Premium Pay:	Total Benefits:
Full Time Positions:	466	0	0	25,683,875	867,313	0	17,921,771
Part Time Positions:	8	0	0				
Non Permanent Positions:	0	0	0				
Positions in Component:	474	0	0				
Total Component Months:	5664.0						
				Total Pre-Vacancy:			
				Minus Vacancy Adjustment of 6.01%:			
				Total Post-Vacancy:			
				Plus Lump Sum Premium Pay:			
				Personal Services Line 100:			41,800,100

PCN Funding Sources:	Pre-Vacancy	Post-Vacancy	Percent
1002 Federal Receipts	22,637,558	21,277,023	50.90%
1003 General Fund Match	18,144,832	17,054,313	40.80%
1004 General Fund Receipts	3,008,601	2,827,782	6.77%
1007 Interagency Receipts	630,945	593,025	1.42%

Note: If a position is split, an asterisk (*) will appear in the Split/Count column. If the split position is also counted in the component, two asterisks (**) will appear in this column. [No valid job title] appearing in the Job Class Title indicates that the PCN has an invalid class code or invalid range for the class code effective date of this scenario.

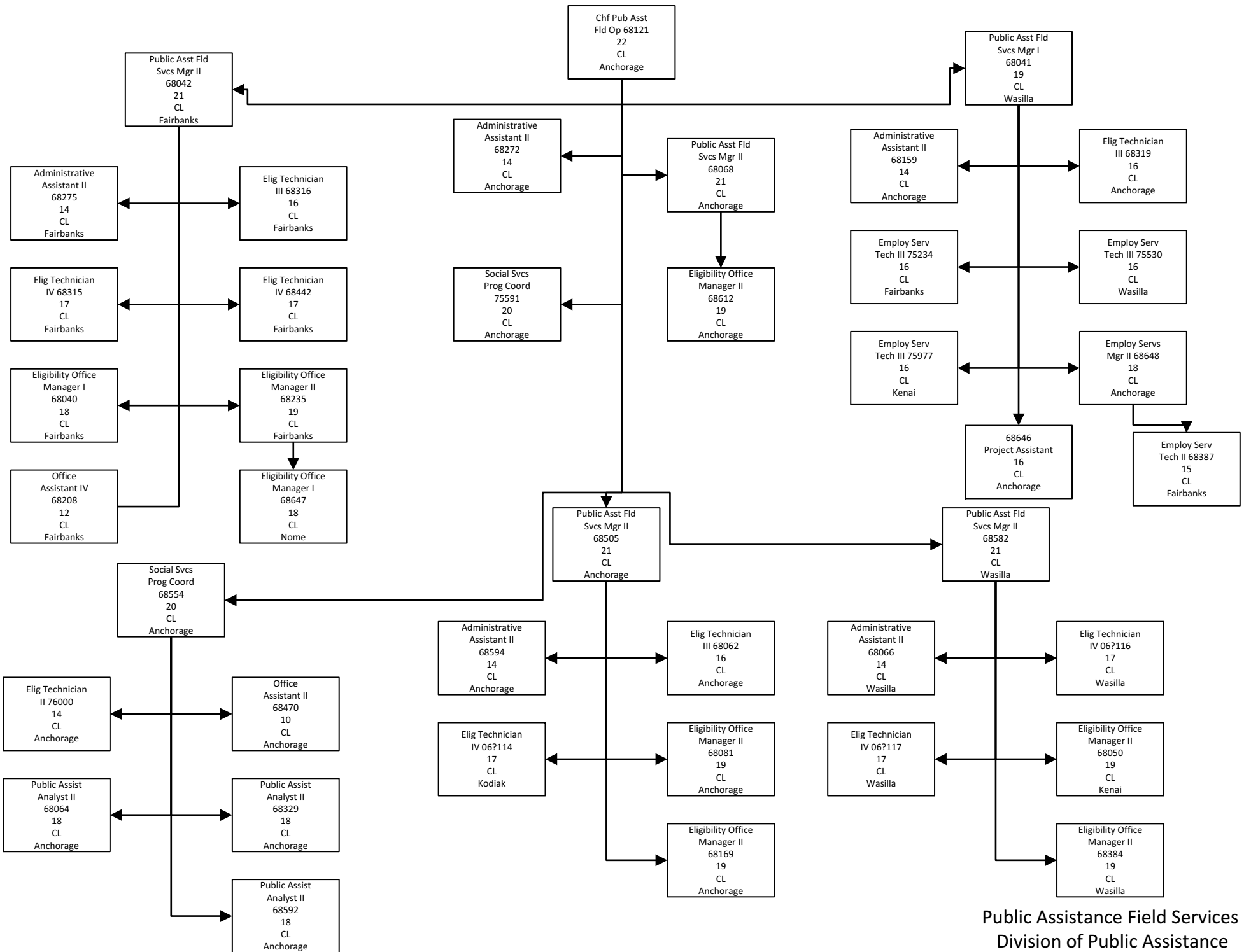
Personal Services Expenditure Detail (1445)

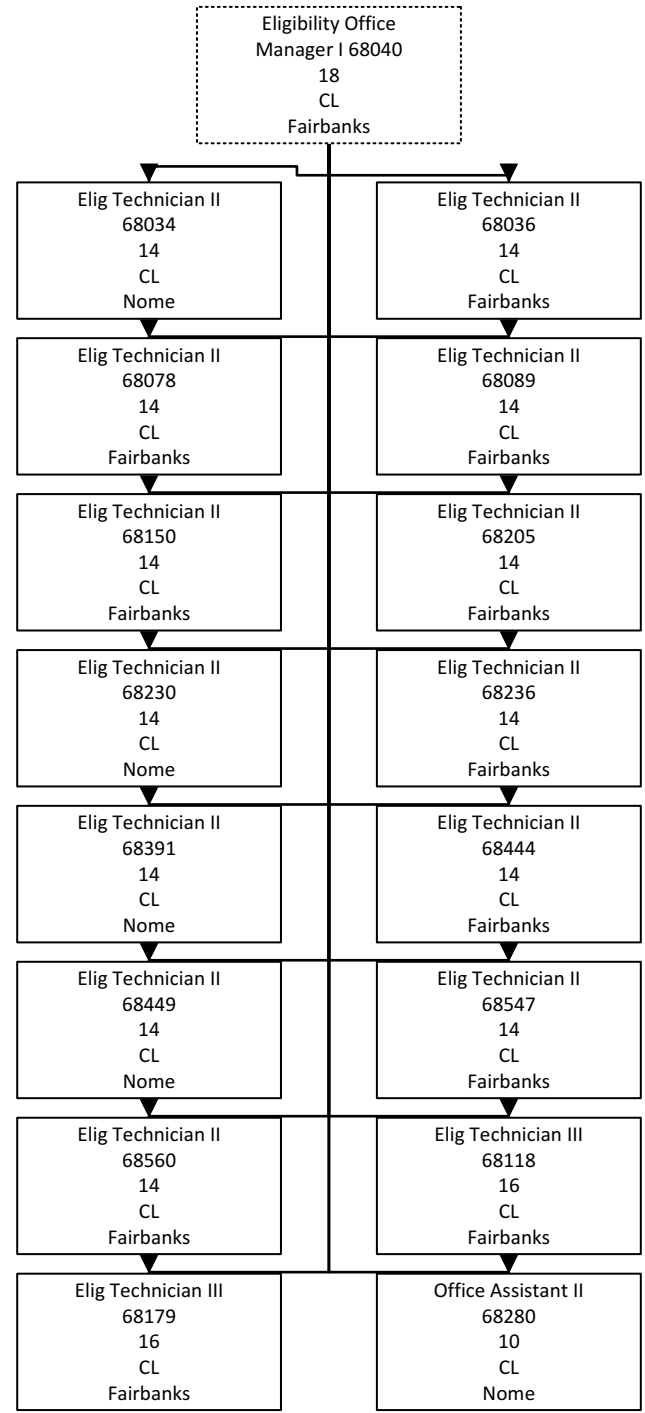
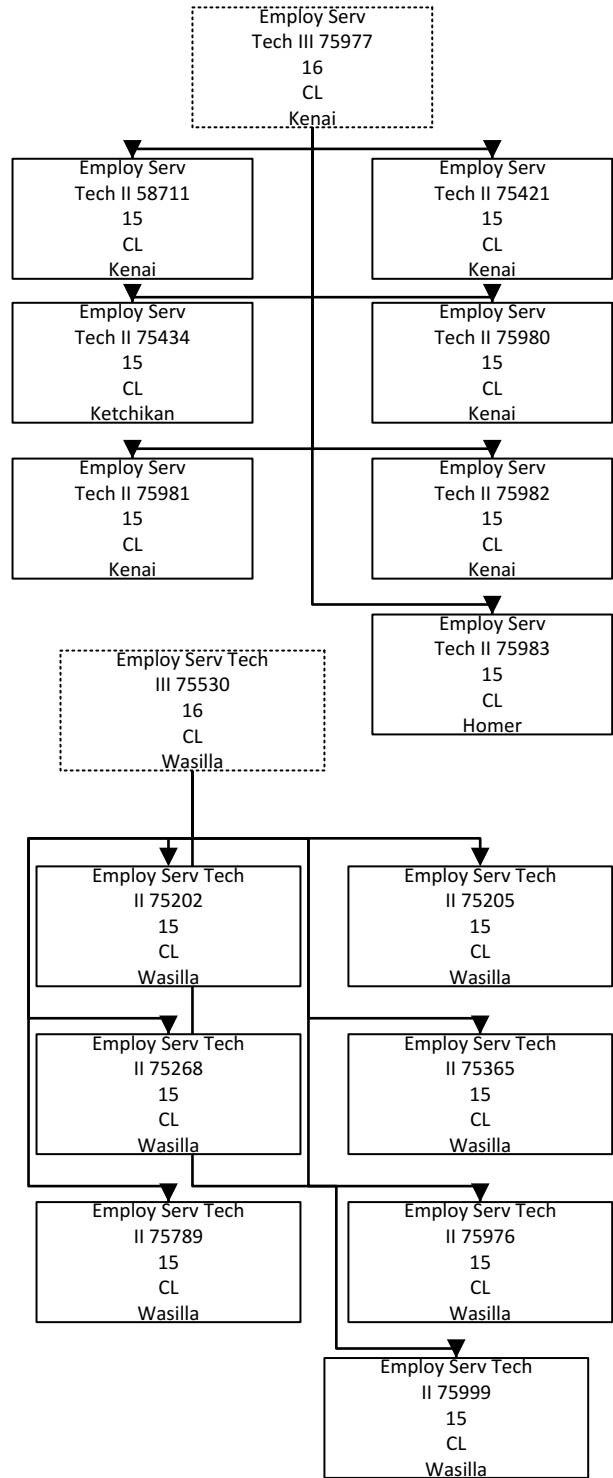
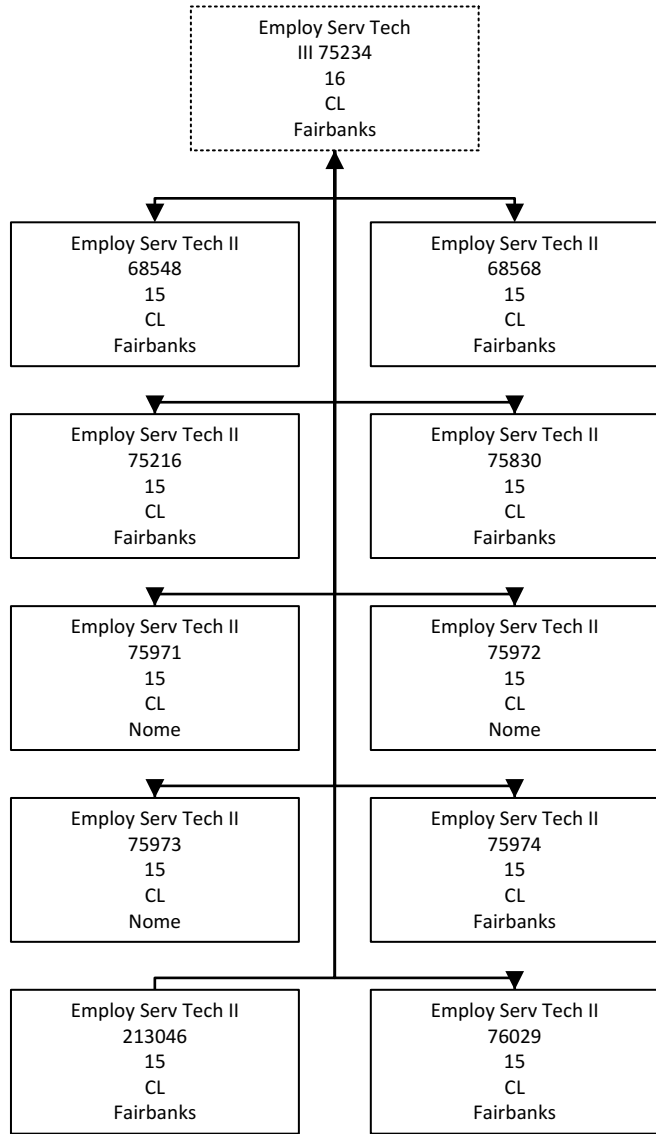
Department of Health and Social Services

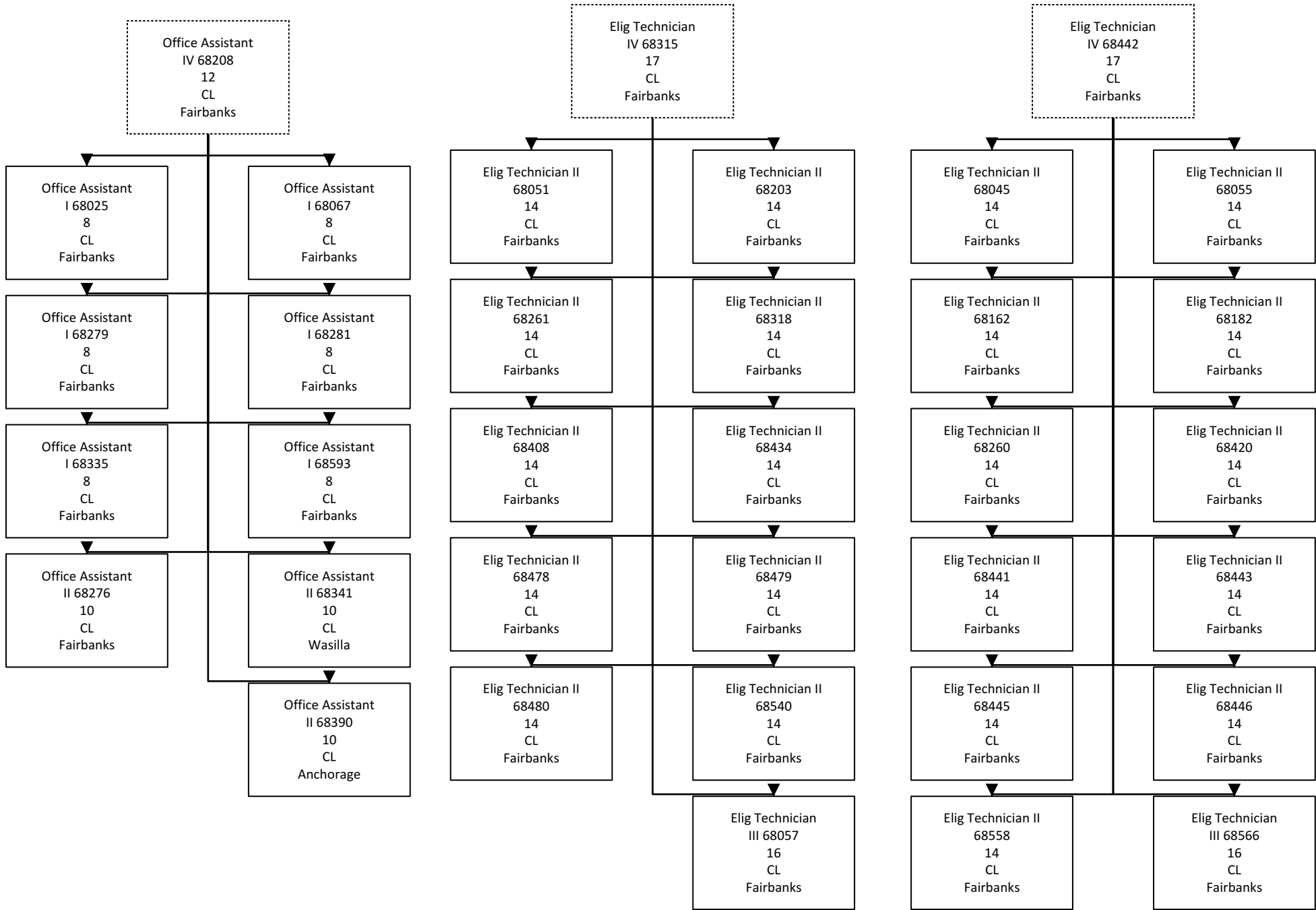
Scenario: FY2020 Governor Amended (15636)
Component: Public Assistance Field Services (236)
RDU: Public Assistance (73)

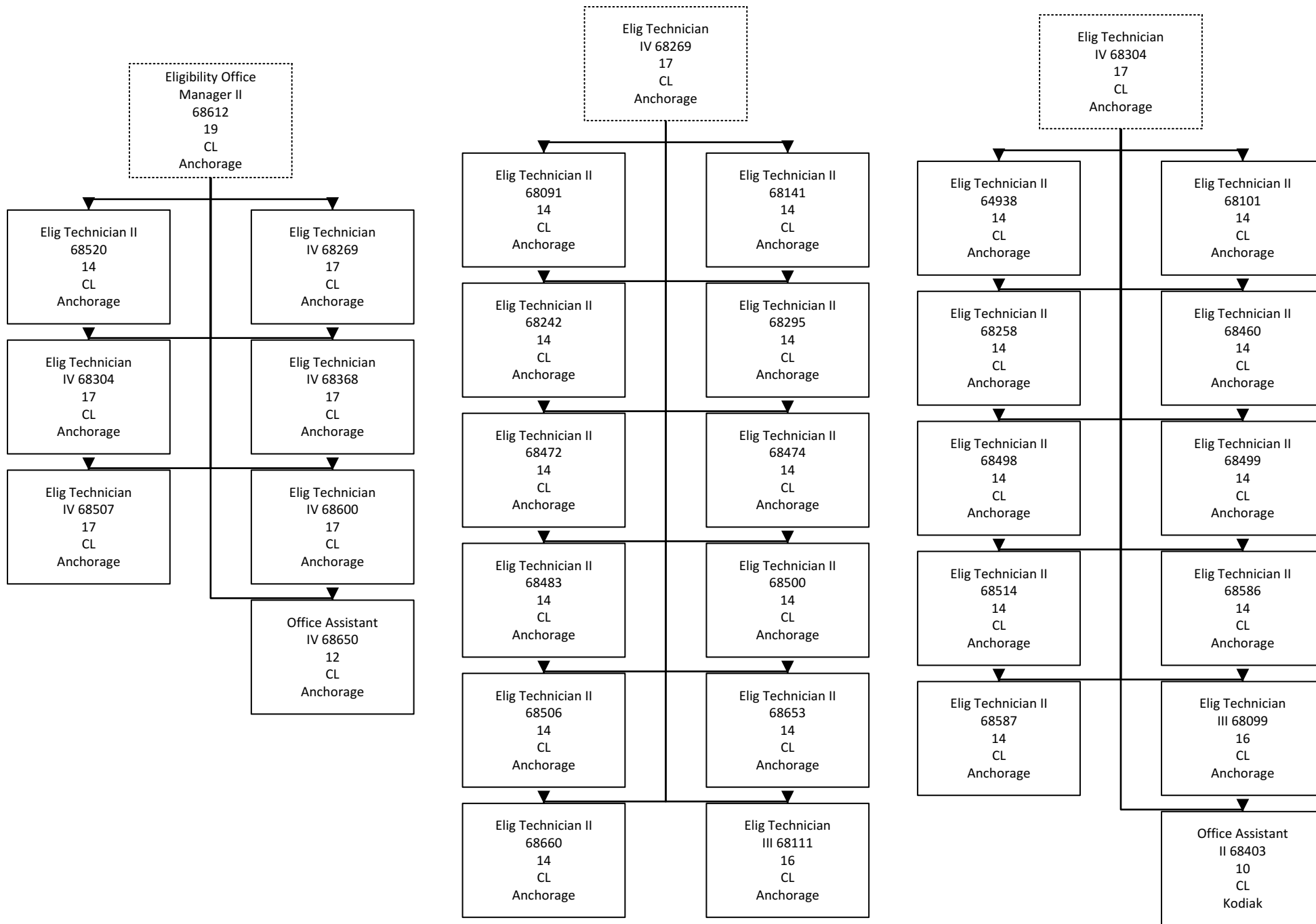
PCN Funding Sources:	Pre-Vacancy	Post-Vacancy	Percent
1108 Statutory Designated Program Receipts	51,024	47,957	0.11%
Total PCN Funding:	44,472,959	41,800,100	100.00%

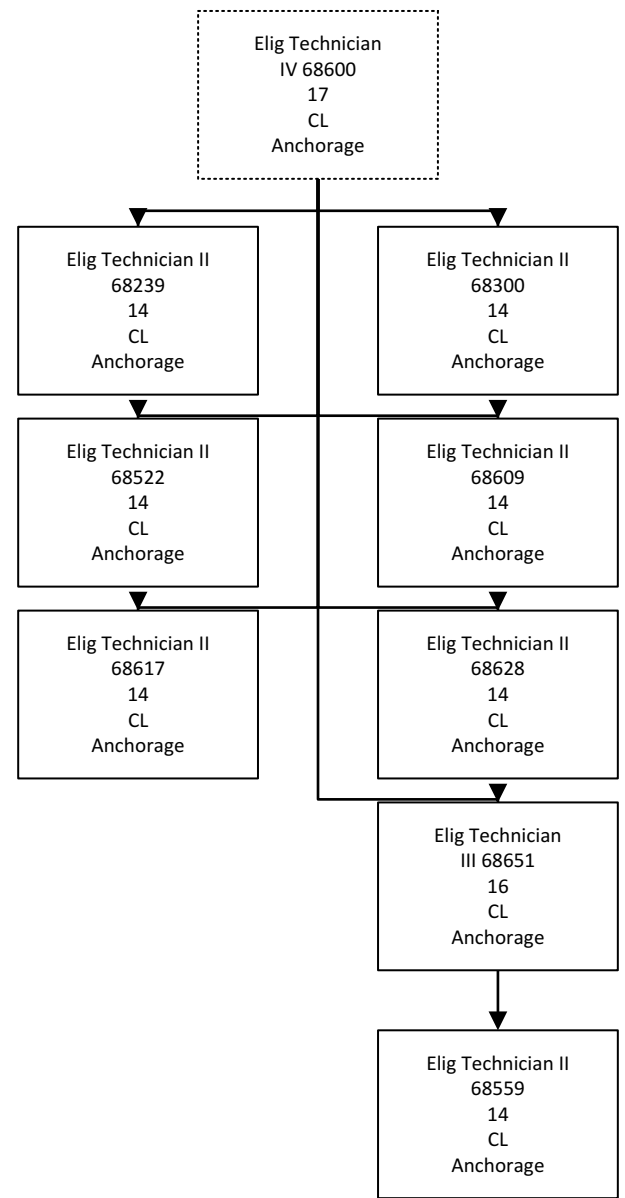
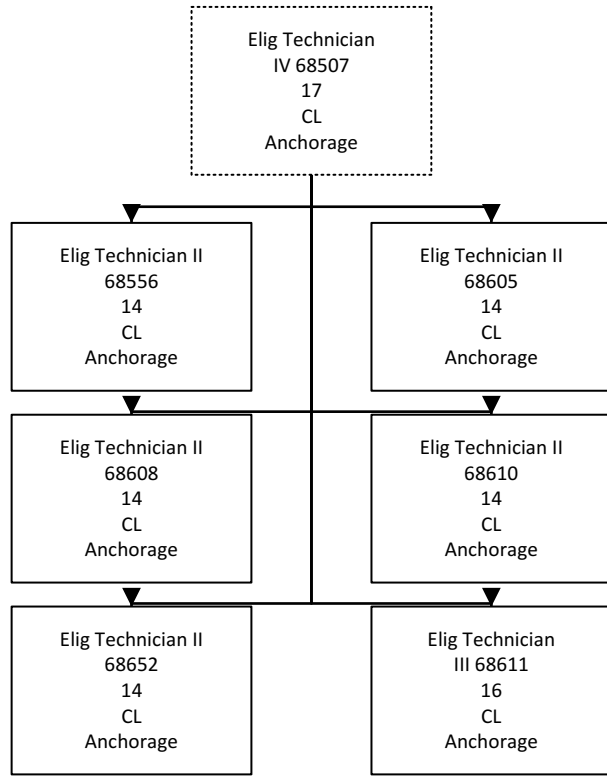
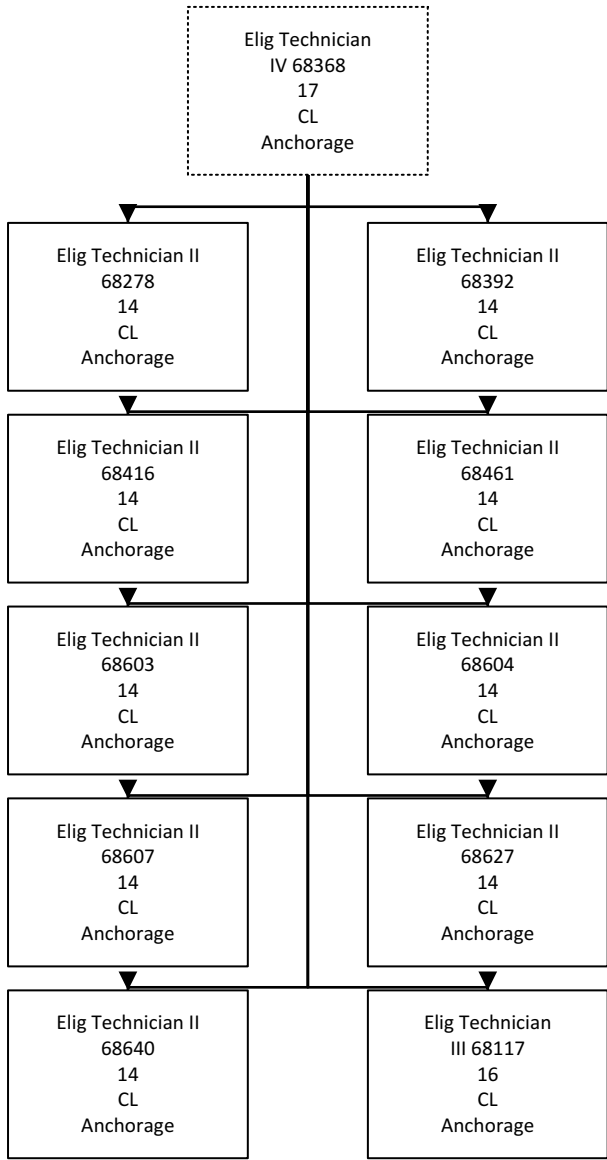
Note: If a position is split, an asterisk (*) will appear in the Split/Count column. If the split position is also counted in the component, two asterisks (**) will appear in this column.
[No valid job title] appearing in the Job Class Title indicates that the PCN has an invalid class code or invalid range for the class code effective date of this scenario.

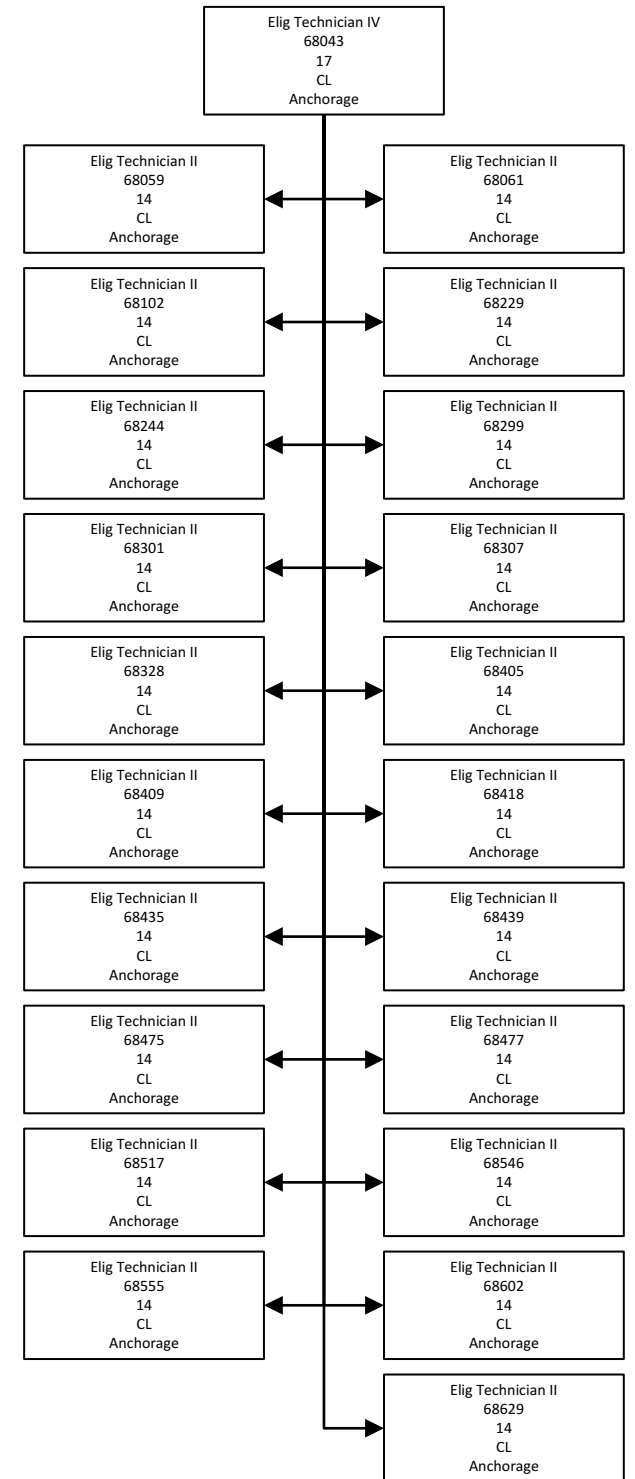
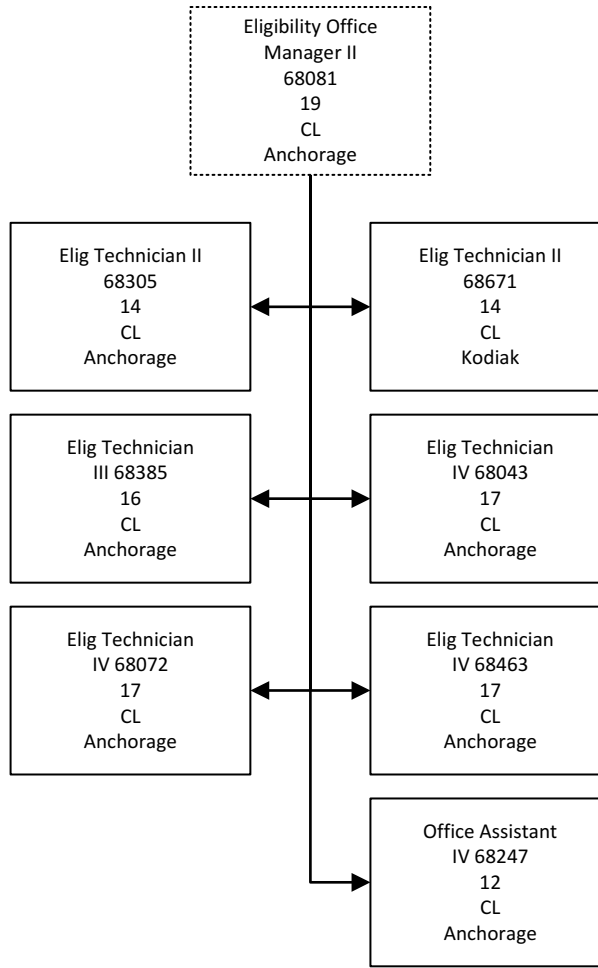
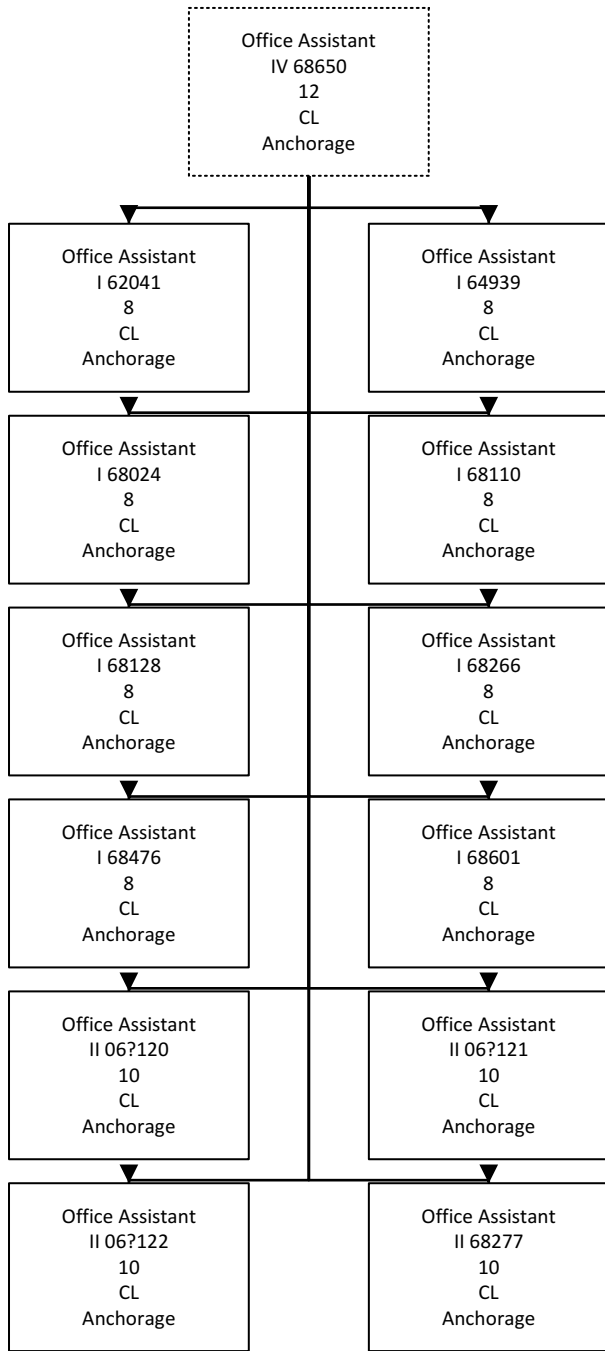


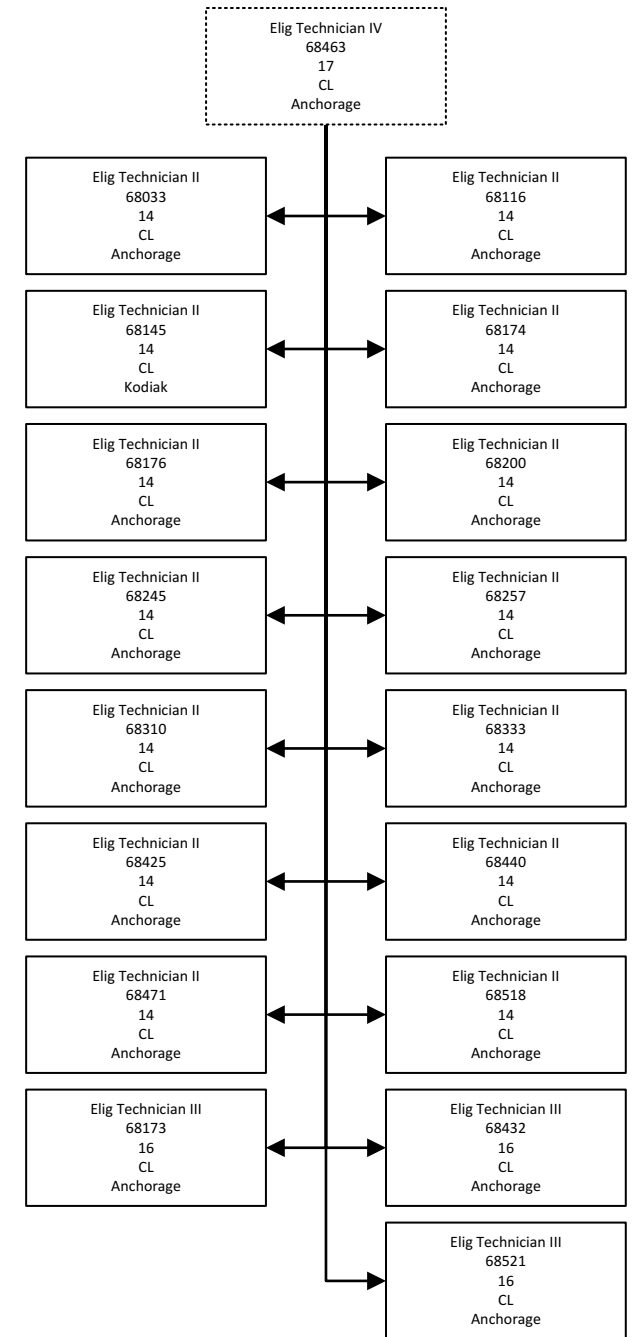
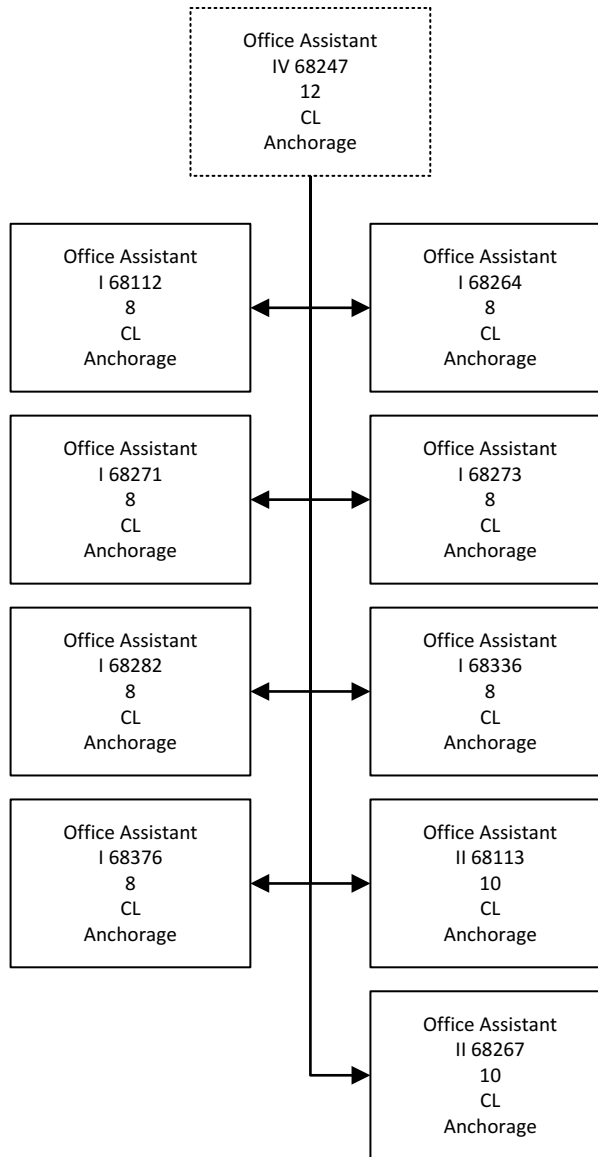
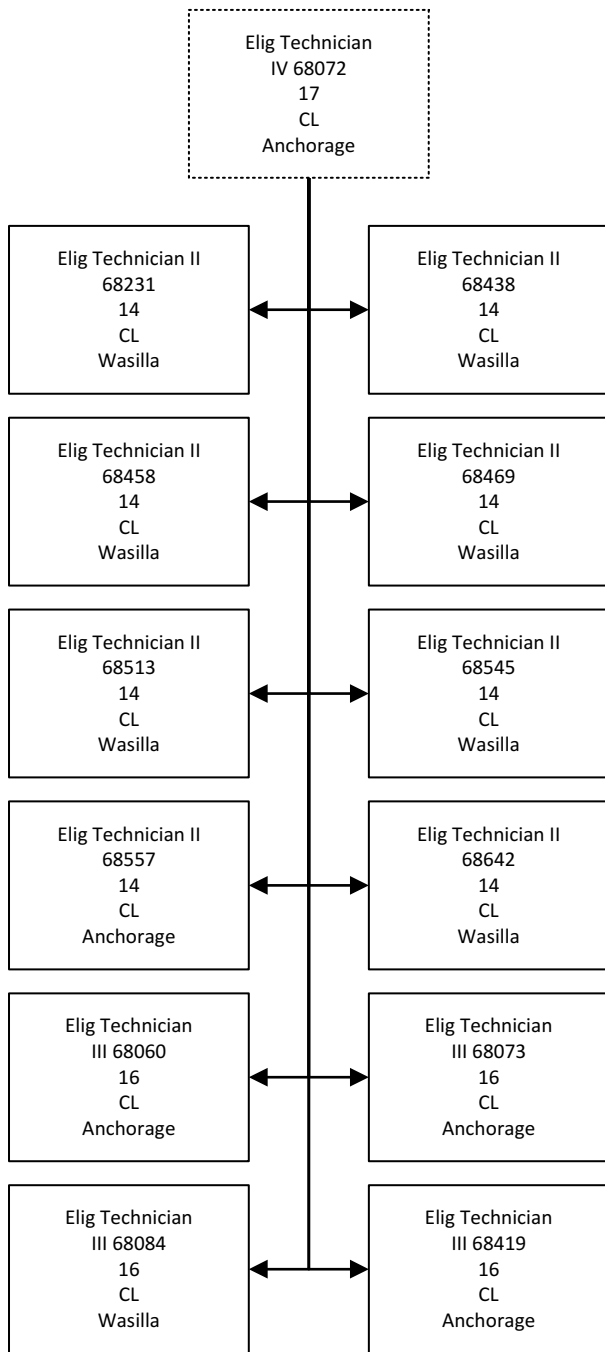


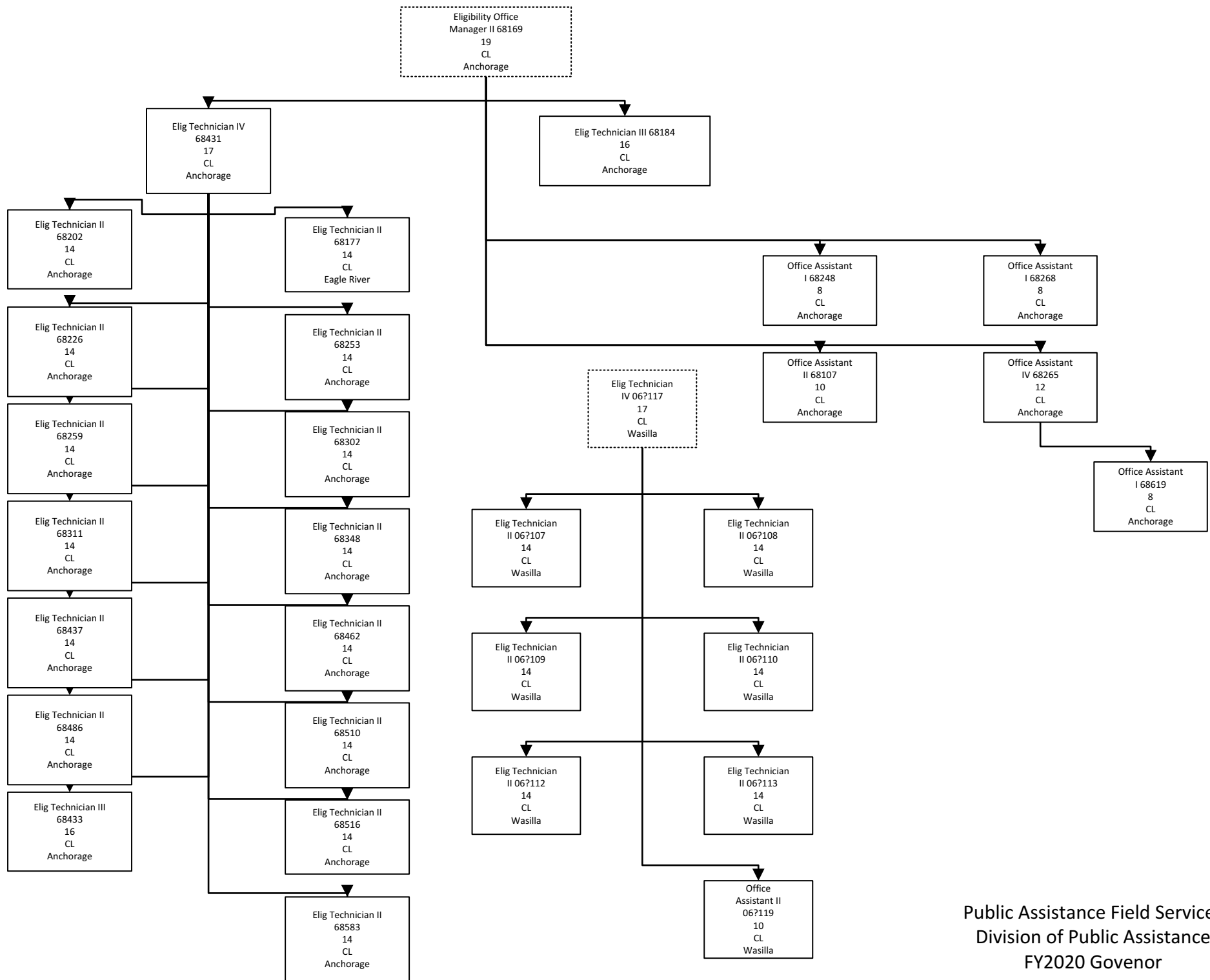


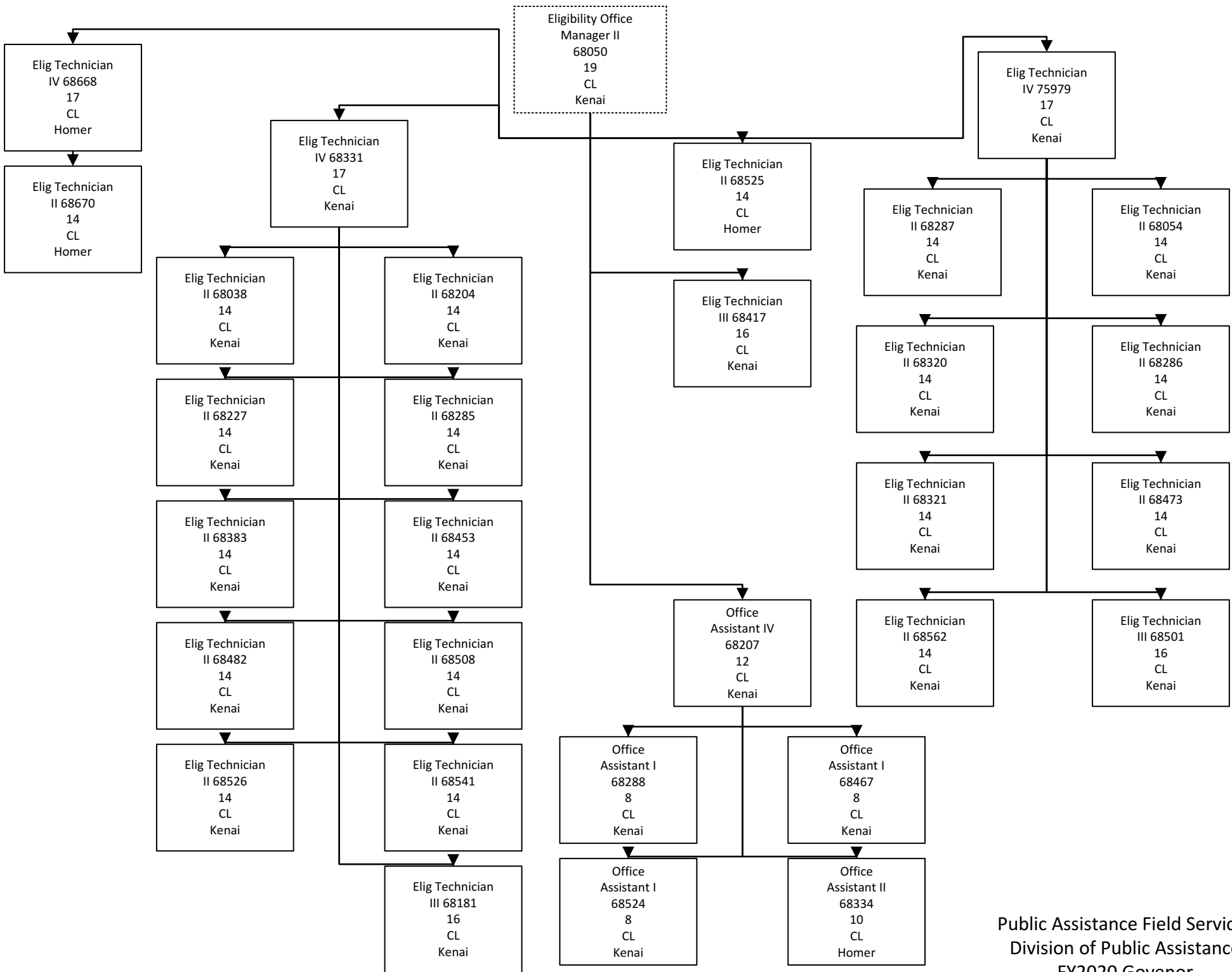


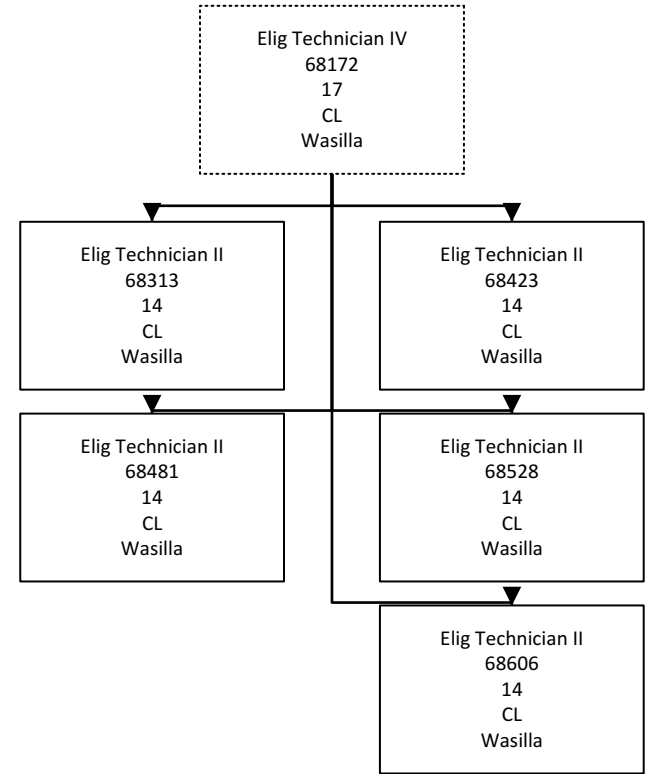
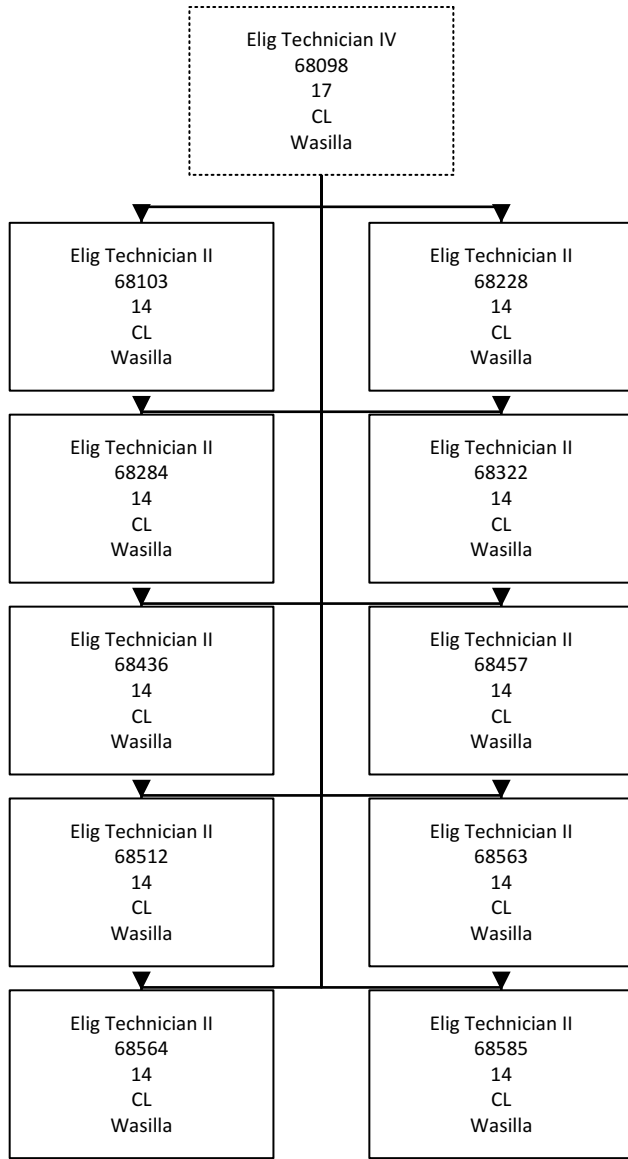
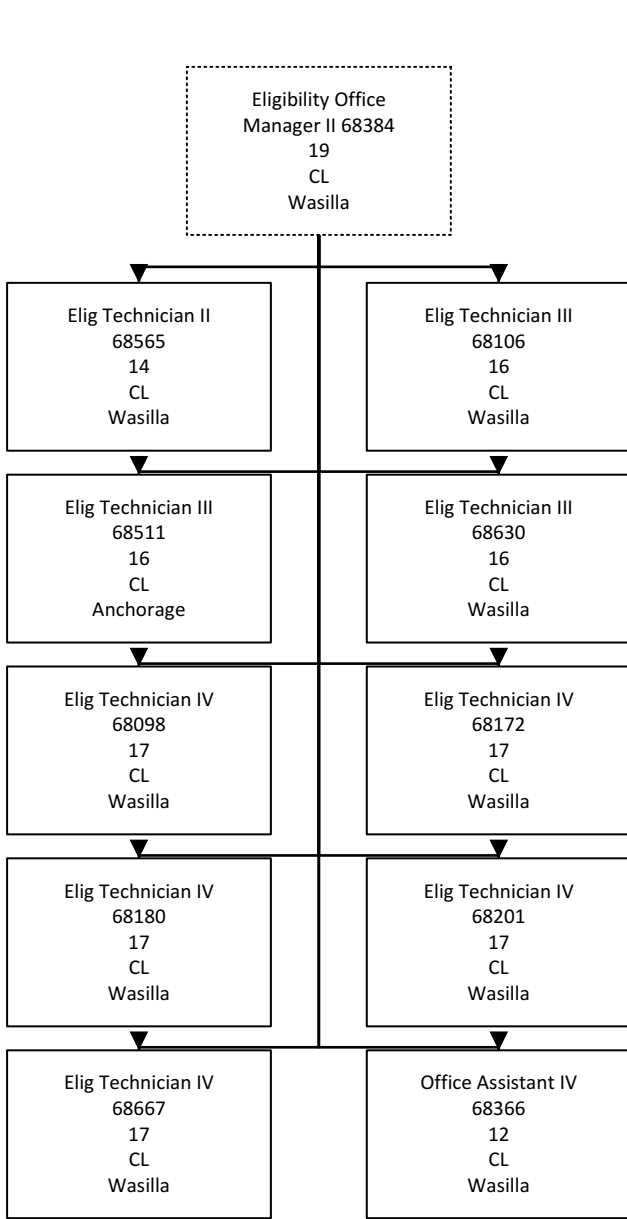


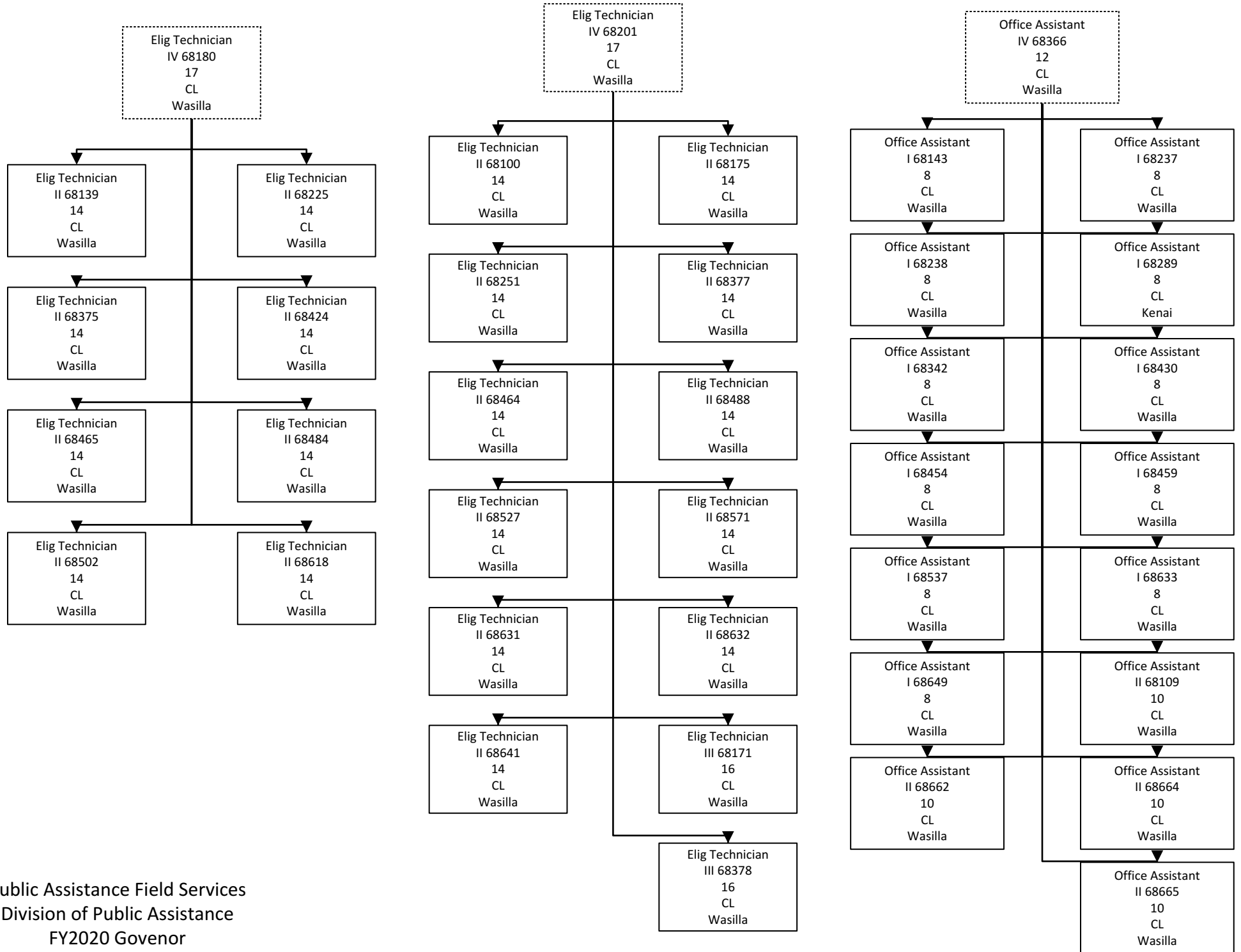


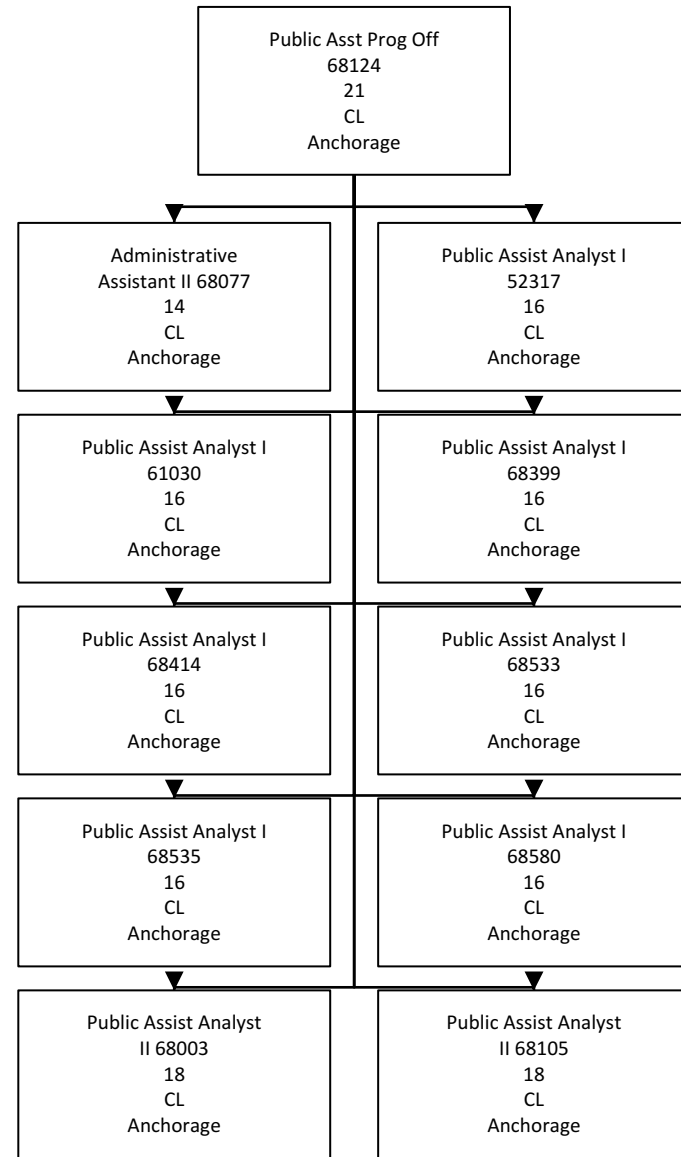
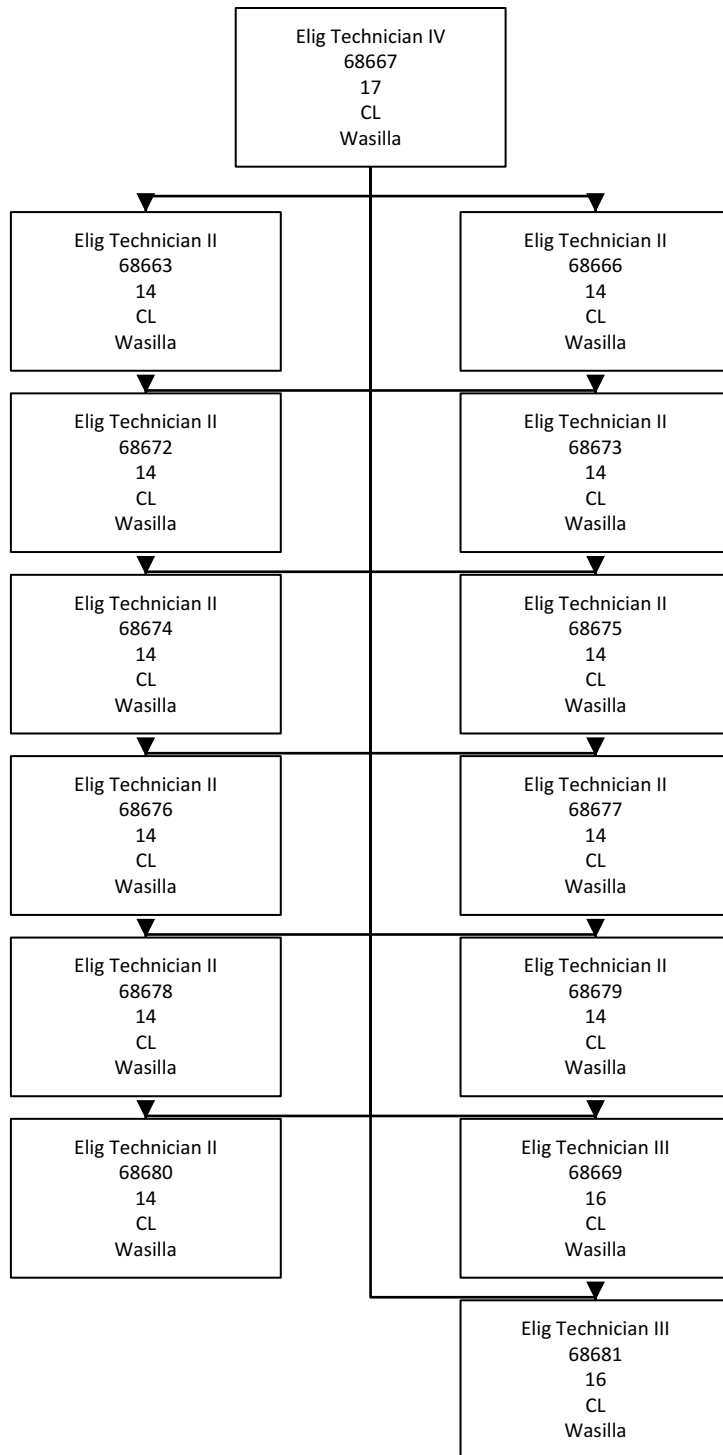


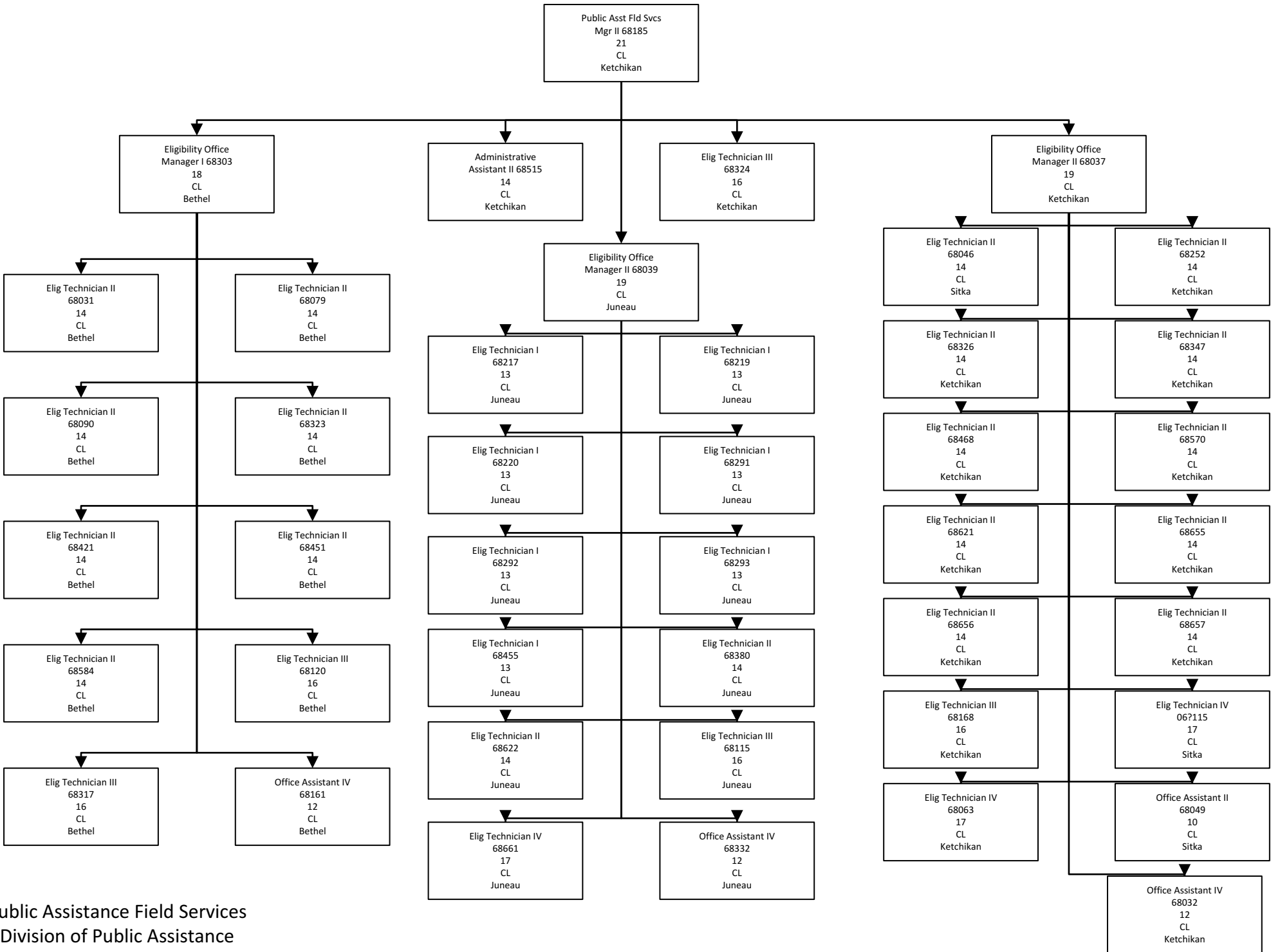


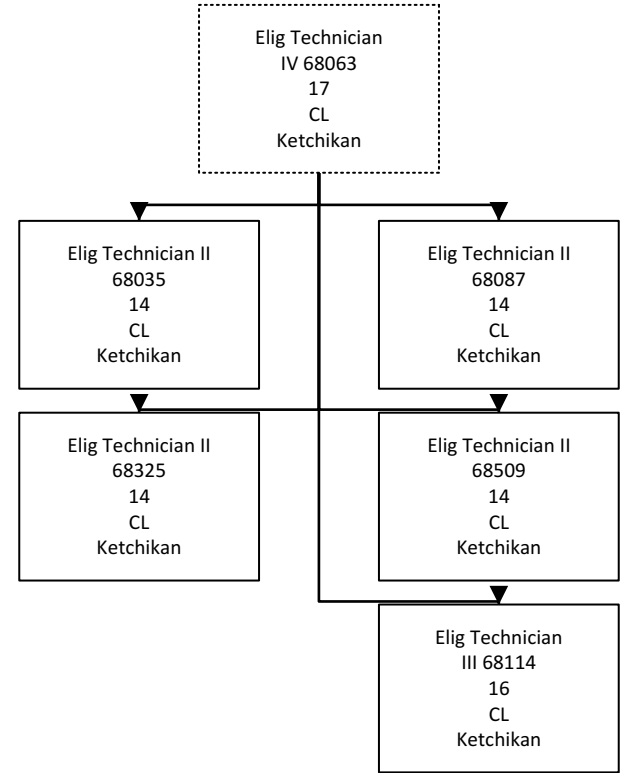
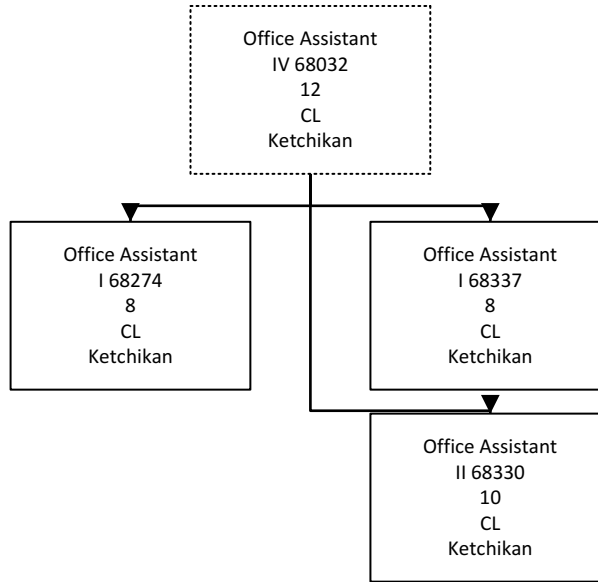
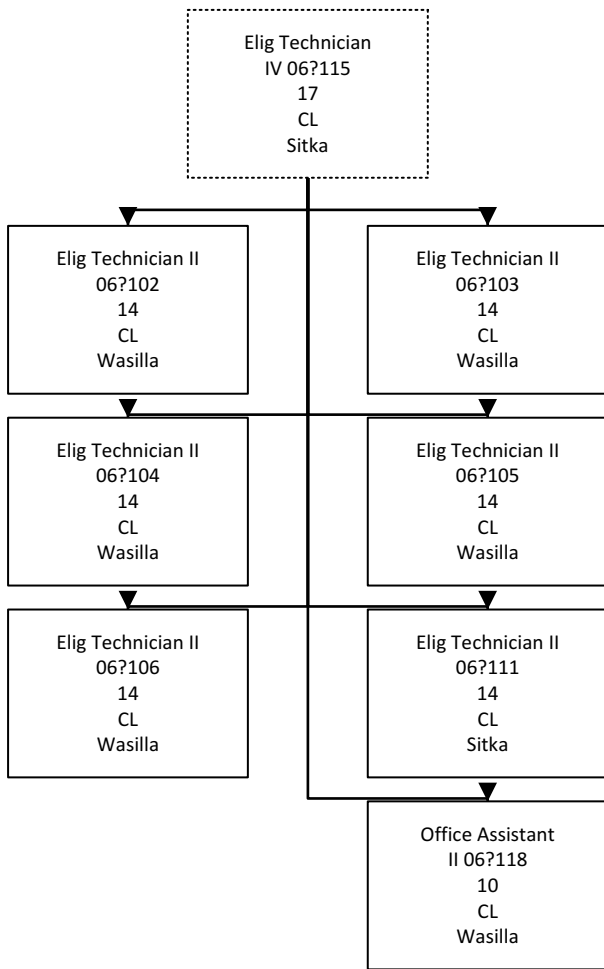


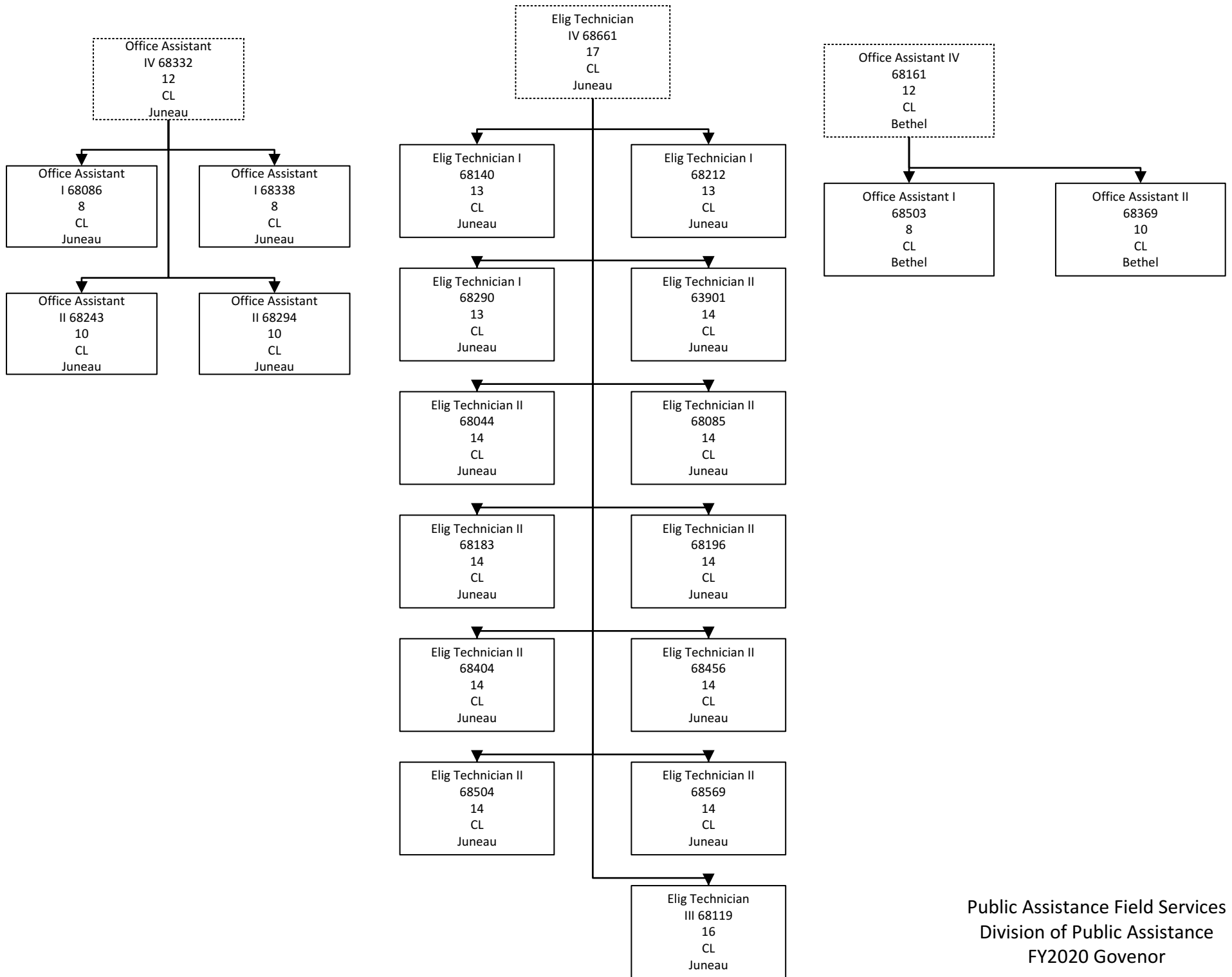












Division Operations
Manager 68213
24
CL
Juneau

