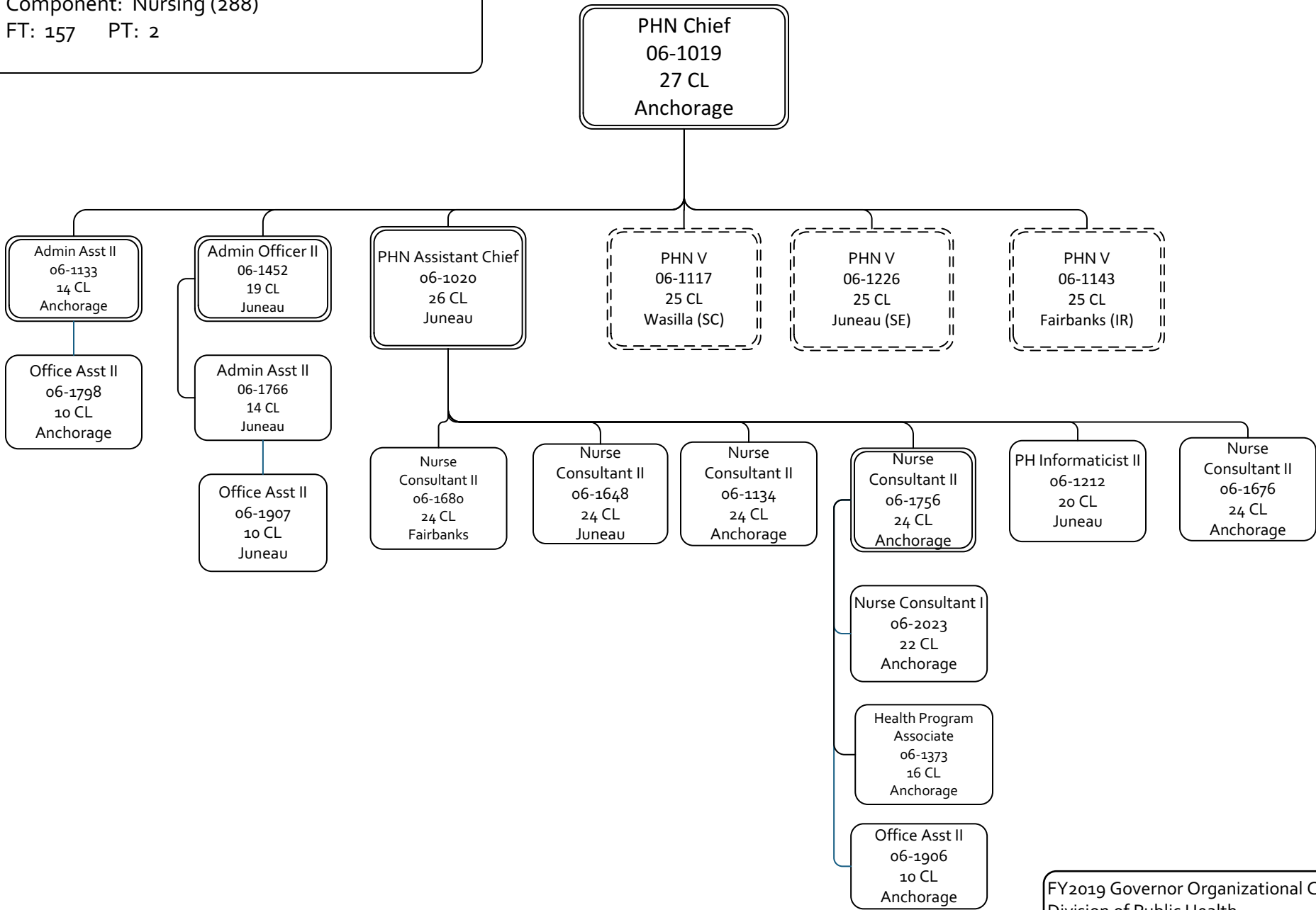


Department of Health and Social Services

RDU: Public Health (502)

Component: Nursing (288)

FT: 157 PT: 2

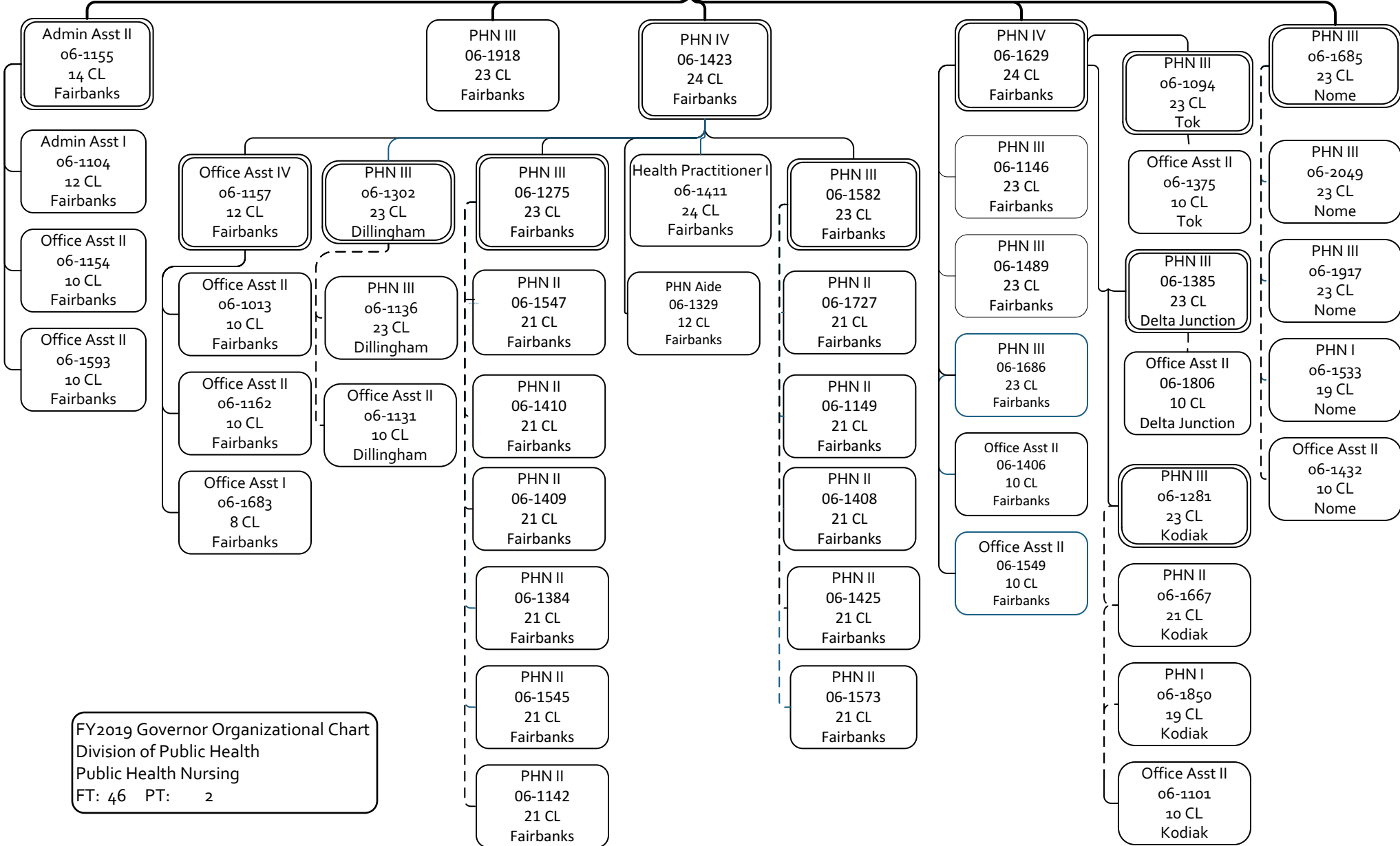


FY2019 Governor Organizational Chart
Division of Public Health
Public Health Nursing
FT: 16 PT: 0

Department of Health and Social Services

RDU: Public Health (502)
Component: Nursing (288)
FT: 157 PT: 2

Public Health Nurse V
06-1143
25 CL
Fairbanks

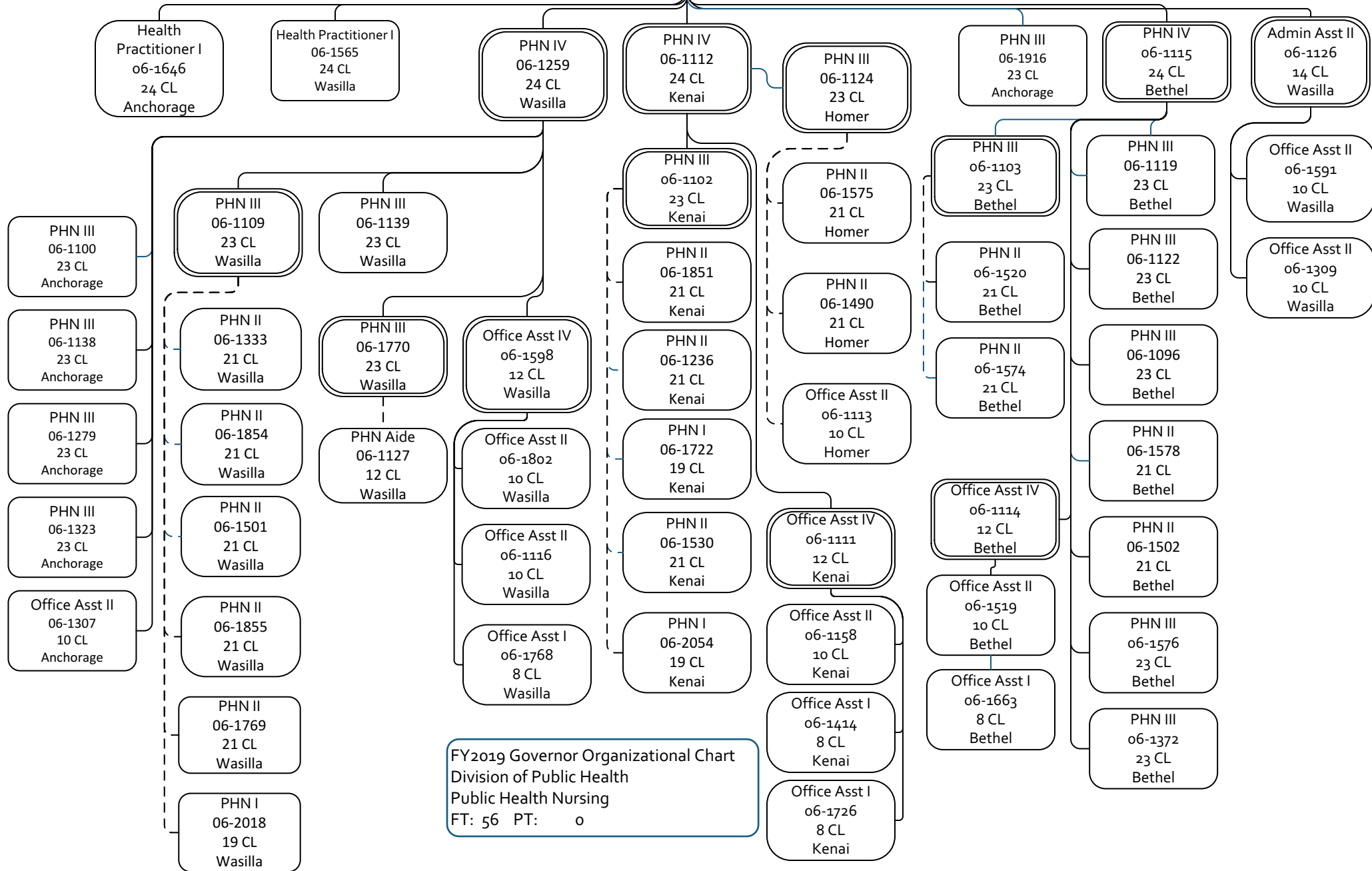


FY2019 Governor Organizational Chart
Division of Public Health
Public Health Nursing
FT: 46 PT: 2

Department of Health and Social Services

RDU: Public Health (502)
Component: Nursing (288)
FT: 157 PT: 2

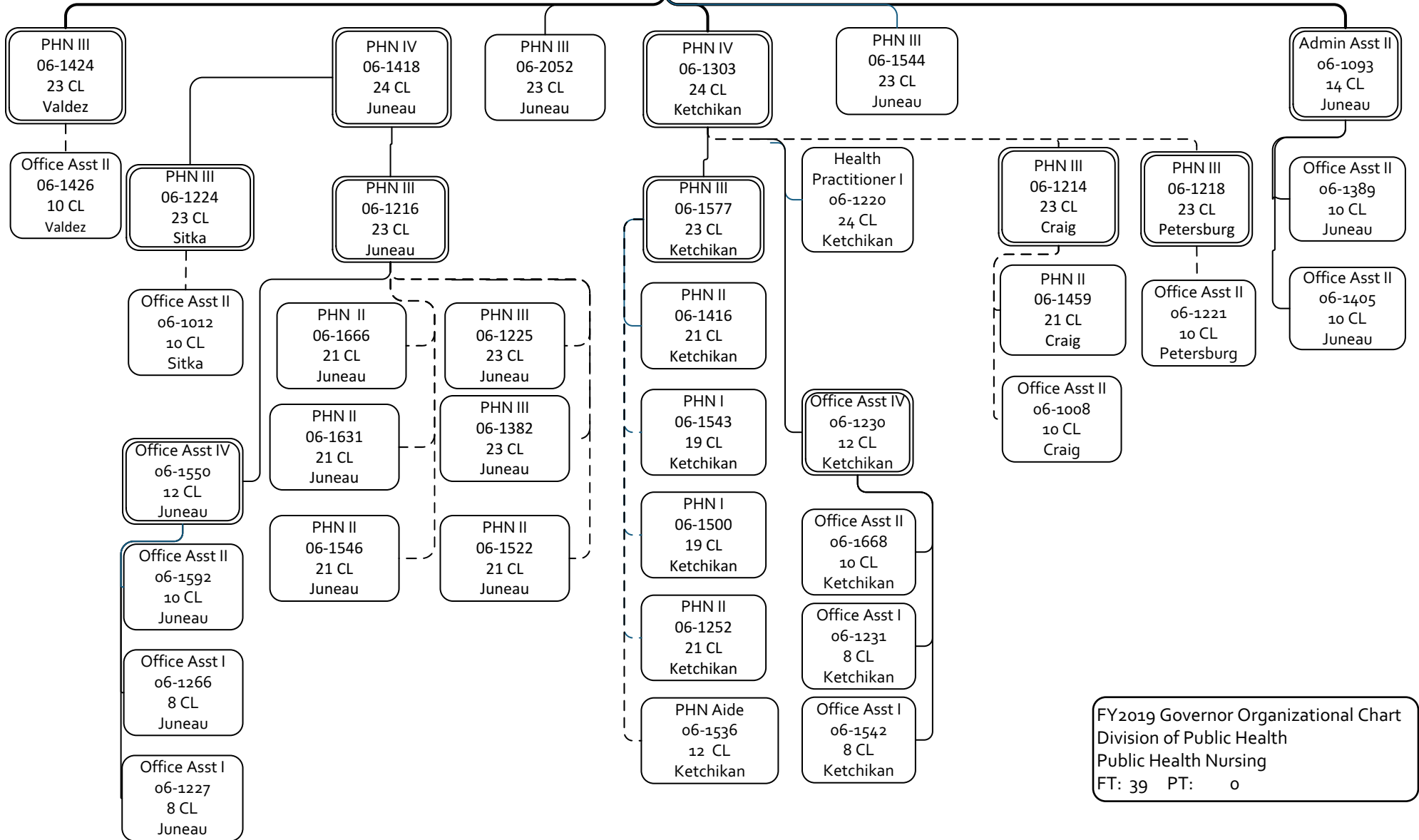
Public Health Nurse V
06-1117
25 CL
Wasilla



FY2019 Governor Organizational Chart
Division of Public Health
Public Health Nursing
FT: 56 PT: 0

Department of Health and Social Services
 RDU: Public Health (502)
 Component: Nursing (288)
 FT: 157 PT: 2

Public Health Nurse V
 06-1226
 25 CL
 Juneau



FY2019 Governor Organizational Chart
 Division of Public Health
 Public Health Nursing
 FT: 39 PT: 0