

Component Detail (1077)

Department of Labor and Workforce Development

Component: Unemployment Insurance (2276)

Non-Formula Component

RDU: Employment and Training Services (646)

IRIS AP Type: B7U2

	FY2018 Actuals (15158)	FY2019 Conference Committee (14954)	FY2019 Authorized (14962)	FY2019 Management Plan (14994)	FY2020 Governor (15610)	FY2020 Governor Amended (15636)	FY2020 Governor vs FY2020 Governor Amended	
1000 Personal Services	15,121.0	17,875.3	17,875.3	17,126.0	17,780.2	17,263.6	-516.6	-2.9%
2000 Travel	52.6	55.0	55.0	55.0	55.0	28.6	-26.4	-48.0%
3000 Services	4,623.7	5,111.6	5,111.6	5,468.2	5,330.6	5,330.6	0.0	0.0%
4000 Commodities	103.3	252.3	252.3	252.3	252.3	252.3	0.0	0.0%
5000 Capital Outlay	0.0	7.5	7.5	7.5	7.5	7.5	0.0	0.0%
7000 Grants, Benefits	0.0	0.0	0.0	0.0	0.0	0.0	0.0	0.0%
8000 Miscellaneous	0.0	0.0	0.0	0.0	0.0	0.0	0.0	0.0%
Totals	19,900.6	23,301.7	23,301.7	22,909.0	23,425.6	22,882.6	-543.0	-2.3%
<u>Funding Sources:</u>								
1002 Fed Rcpts (Fed)	18,886.9	22,168.9	22,168.9	21,712.1	22,208.0	21,687.7	-520.3	-2.3%
1005 GF/Prgm (DGF)	12.1	7.9	7.9	7.9	8.1	7.9	-0.2	-2.5%
1007 I/A Rcpts (Other)	292.4	292.3	292.3	336.4	339.1	336.2	-2.9	-0.9%
1054 Empl Trng (DGF)	354.6	416.3	416.3	416.3	425.2	415.4	-9.8	-2.3%
1108 Stat Desig (Other)	0.0	0.0	0.0	20.0	20.0	20.0	0.0	0.0%
1151 VoTech Ed (DGF)	354.6	416.3	416.3	416.3	425.2	415.4	-9.8	-2.3%
<u>Funding Totals:</u>								
Unrestricted General (UGF)	0.0	0.0	0.0	0.0	0.0	0.0	0.0	0.0%
Designated General (DGF)	721.3	840.5	840.5	840.5	858.5	838.7	-19.8	-2.3%
Other	292.4	292.3	292.3	356.4	359.1	356.2	-2.9	-0.8%
Federal	18,886.9	22,168.9	22,168.9	21,712.1	22,208.0	21,687.7	-520.3	-2.3%
<u>Positions:</u>								
Permanent Full Time	154	152	152	149	149	149	0	0.0%
Permanent Part Time	34	34	34	33	33	33	0	0.0%
Non Permanent	0	0	0	0	0	0	0	0.0%

Change Record Detail - Multiple Scenarios with Descriptions (294)
Department of Labor and Workforce Development

Component: Unemployment Insurance (2276)
RDU: Employment and Training Services (646)

Scenario/Change Record Title	Trans Type	Totals	Personal Services	Travel	Services	Commodities	Capital Outlay	Grants, Benefits	Miscellaneous	PFT	Positions PPT	NP
***** Changes From FY2019 Conference Committee To FY2019 Authorized *****												
FY2019 Conference Committee												
	ConfCom	23,301.7	17,875.3	55.0	5,111.6	252.3	7.5	0.0	0.0	152	34	0
1002 Fed Rcpts		22,168.9										
1005 GF/Prgm		7.9										
1007 I/A Rcpts		292.3										
1054 Empl Trng		416.3										
1151 VoTech Ed		416.3										
Subtotal		23,301.7	17,875.3	55.0	5,111.6	252.3	7.5	0.0	0.0	152	34	0
***** Changes From FY2019 Authorized To FY2019 Management Plan *****												
Transfer Accountant III (07-5847) to Employment and Training Services Administration Due to Reorganization												
	Trout	-106.8	-106.8	0.0	0.0	0.0	0.0	0.0	0.0	-1	0	0
1002 Fed Rcpts		-106.8										
Transfer a filled full-time Accountant III (07-5847), range 18, located in Juneau from the Unemployment Insurance (UI) component to the Employment and Training Services Administration component due to reorganization of the division. Given the workload of the position (providing accounting support to the UI Trust Fund), it makes sense to align it with other accounting positions doing similar work for the divisions' other programs.												
Delete Three Vacant Positions (07-5038, 07-5848, 07-5918)												
	PosAdj	0.0	0.0	0.0	0.0	0.0	0.0	0.0	0.0	-2	-1	0
Delete the following vacant positions as they are no longer needed:												
Part-time Appeals Officer I (07-5038) range 17, located in Juneau												
Full-time Accountant (07-5848) range 14, located in Juneau												
Full-time Unemployment Insurance Tech I (07-5918) range 14, located in Juneau												
Align Authority with Anticipated Expenditures												
	LIT	0.0	-642.5	0.0	642.5	0.0	0.0	0.0	0.0	0	0	0
Transfer personal services authority to pay anticipated services expenditures. The remaining personal services authority is sufficient to cover anticipated expenditures.												
Transfer to Workforce Services for Reemployment Services and Eligibility Assessment												
	Trout	-350.0	0.0	0.0	-350.0	0.0	0.0	0.0	0.0	0	0	0
1002 Fed Rcpts		-350.0										
Job center staff in the Workforce Services component assists Unemployment Insurance (UI) claimants by providing job seeker services. In the past, the UI component has paid the Workforce Services component for these services through a reimbursable service agreement (RSA). Moving the authority into the Workforce Services component will streamline the process by eliminating the RSA.												

Transfer from Workforce Services for Secure Access Management

Change Record Detail - Multiple Scenarios with Descriptions (294)
Department of Labor and Workforce Development

Component: Unemployment Insurance (2276)
RDU: Employment and Training Services (646)

Scenario/Change Record Title	Trans Type	Totals	Personal Services	Travel	Services	Commodities	Capital Outlay	Grants, Benefits	Miscellaneous	Positions		NP
										PFT	PPT	
	Trin	64.1	0.0	0.0	64.1	0.0	0.0	0.0	0.0	0	0	0
1007 I/A Rcpts		44.1										
1108 Stat Desig		20.0										
<p>Transfer interagency receipt and statutory designated program receipt authority from the Workforce Services component to the Unemployment Insurance component for Secure Access Management. Additional receipt authority is needed in the Unemployment Insurance component in order to bill and collect revenue from state agencies and other organizations using the Secure Access Management program to cover the costs of the program.</p> <p>The Workforce Services component has sufficient interagency receipt and statutory designated program receipt authority to accommodate this transfer.</p>												
Subtotal		22,909.0	17,126.0	55.0	5,468.2	252.3	7.5	0.0	0.0	149	33	0
***** Changes From FY2019 Management Plan To FY2020 Governor Amended *****												
Executive Branch 50% Travel Reduction												
	Dec	-26.4	0.0	-26.4	0.0	0.0	0.0	0.0	0.0	0	0	0
1002 Fed Rcpts		-24.4										
1007 I/A Rcpts		-0.2										
1054 Empl Trng		-0.9										
1151 VoTech Ed		-0.9										
<p>50% executive branch travel reduction based on actual costs of travel in FY2018. Exceptions were made to travel essential to public safety, health, and disaster management.</p>												
Align Authority to Meet Personal Services Projected Costs												
	LIT	0.0	137.6	0.0	-137.6	0.0	0.0	0.0	0.0	0	0	0
<p>Transfer services authority to pay anticipated personal services expenditures. The remaining services authority is sufficient to cover anticipated expenditures.</p>												
Totals		22,882.6	17,263.6	28.6	5,330.6	252.3	7.5	0.0	0.0	149	33	0

Personal Services Expenditure Detail (1445)

Department of Labor and Workforce Development

Scenario: FY2020 Governor Amended (15636)
 Component: Unemployment Insurance (2276)
 RDU: Employment and Training Services (646)

Status PCN	Tracking ID	Job Class Title	Time Status	Retire Code	Barg Unit	Location	Salary Sched	Range / Steps	Comp Months	Split / Count	Annual Salaries	COLA	Premium Pay	Annual Benefits	Total Costs	UGF Amount
07-4100	9609	Investigator II	FT	A	GP	Anchorage	200	16 F / G	12.0		60,991	2,459	0	39,459	102,909	
07-4101	9610	Investigator II	FT	A	GP	Anchorage	200	16 L / M	12.0		69,942	2,820	0	42,536	115,298	
07-4103	9611	Office Assistant I	FT	A	GP	Juneau	205	8 G / J	12.0		39,372	1,587	0	32,026	72,985	
07-4515	9618	Investigator II	FT	A	GP	Juneau	205	16 G	12.0		64,488	2,600	0	40,661	107,749	
07-4516	9619	Investigator II	FT	A	GP	Fairbanks	99	16 Q	12.0		84,419	3,403	0	47,514	135,336	
07-5005	9647	Supvr, Unempl Ins Tax	FT	A	SS	Juneau	99	23 L / M	12.0		123,011	0	0	61,121	184,132	
07-5006	9648	Admin Asst III	FT	A	GP	Juneau	99	15 M / N	12.0		70,893	2,858	0	42,863	116,614	
07-5007	9649	Unemploy Ins Tech I	PT	A	GP	Juneau	205	14 C / D	11.0		45,565	1,837	0	32,615	80,017	
07-5008	9650	Unemploy Ins Tech III	FT	A	SS	Juneau	205	16 K	12.0		74,004	0	0	44,273	118,277	
07-5011	9651	Accounting Tech II	FT	A	GP	Juneau	205	14 A / B	12.0		46,536	1,876	0	34,489	82,901	
07-5012	9652	Accounting Tech III	FT	A	SS	Juneau	605	16 A / B	12.0		59,092	0	0	39,146	98,238	
07-5014	9653	Unemploy Ins Tech I	PT	A	GP	Juneau	205	14 A / B	11.0		43,067	1,736	0	31,756	76,559	
07-5017	9655	Accounting Tech III	FT	A	GG	Juneau	205	16 K / L	12.0		70,088	2,826	0	42,587	115,501	
07-5018	9656	Spvr Audit Operations	FT	A	SS	Juneau	99	19 Q	12.0		112,923	0	0	57,653	170,576	
07-5022	9658	Accounting Technician IV	FT	A	SS	Anchorage	99	18 N	12.0		90,092	0	0	49,804	139,896	
07-5026	9661	Field Auditor I	FT	A	GP	Fairbanks	203	16 A / B	12.0		53,024	2,138	0	36,720	91,882	
07-5027	9662	Field Auditor I	FT	A	GP	Anchorage	200	16 C / D	12.0		53,710	2,165	0	36,956	92,831	
07-5028	9663	Field Auditor I	FT	A	GP	Anchorage	200	16 F / G	12.0		59,631	2,404	0	38,991	101,026	
07-5035	9665	Office Assistant II	FT	A	GP	Juneau	205	10 B / C	12.0		37,503	1,512	0	31,384	70,399	
07-5037	9667	Unemploy Ins Tech I	FT	A	GP	Juneau	205	14 B / C	12.0		47,250	1,905	0	34,735	83,890	
07-5039	9669	Employ Sec Analyst II	FT	A	GP	Juneau	205	17 N	12.0		81,564	3,288	0	46,532	131,384	
07-5042	9671	Investigator III	FT	A	SS	Anchorage	99	18 N / O	12.0		91,485	0	0	50,283	141,768	
07-5045	9673	Accounting Tech II	FT	A	GP	Juneau	205	14 E / F	12.0		52,749	2,127	0	36,625	91,501	
07-5046	9674	Accounting Tech I	FT	A	GP	Juneau	205	12 A / B	12.0		40,848	1,647	0	32,534	75,029	
07-5051	9677	Unemploy Ins Tech I	PT	A	GP	Anchorage	200	14 C / D	11.0		43,180	1,741	0	31,795	76,716	
07-5055	9678	Accounting Technician IV	FT	A	SS	Juneau	205	18 E / F	12.0		77,144	0	0	45,352	122,496	
07-5059	9680	Unemploy Ins Tech I	PT	A	GP	Juneau	205	14 A / B	11.0		42,615	1,718	0	31,601	75,934	
07-5060	9681	Unemploy Ins Tech III	FT	A	SS	Juneau	205	16 K / L	12.0		74,303	0	0	44,376	118,679	
07-5114	9690	Unemploy Ins Clm Ctr Mgr II	FT	A	SS	Anchorage	99	20 M / N	12.0		102,757	0	0	54,158	156,915	

Note: If a position is split, an asterisk (*) will appear in the Split/Count column. If the split position is also counted in the component, two asterisks (**) will appear in this column.
 [No valid job title] appearing in the Job Class Title indicates that the PCN has an invalid class code or invalid range for the class code effective date of this scenario.

Personal Services Expenditure Detail (1445)

Department of Labor and Workforce Development

Scenario: FY2020 Governor Amended (15636)
 Component: Unemployment Insurance (2276)
 RDU: Employment and Training Services (646)

Status	PCN	Tracking ID	Job Class Title	Time Status	Retire Code	Barg Unit	Location	Salary Sched	Range / Steps	Comp Months	Split / Count	Annual Salaries	COLA	Premium Pay	Annual Benefits	Total Costs	UGF Amount
07-5117		9692	Unemploy Ins Tech II	FT	A	GP	Anchorage	99	15 N / O	12.0		70,321	2,835	0	42,667	115,823	
07-5121		9693	Unemploy Ins Tech II	FT	A	GP	Anchorage	200	15 E / F	12.0		53,793	2,169	0	36,984	92,946	
07-5124		9695	Unemploy Ins Tech I	PT	A	GP	Fairbanks	203	14 B	11.0		42,306	1,706	0	31,494	75,506	
07-5125		9696	Unemploy Ins Tech I	FT	A	GP	Anchorage	99	14 P / Q	12.0		70,174	2,829	0	42,616	115,619	
07-5128		9698	Administrative Assistant II	FT	A	GG	Anchorage	99	14 Q	12.0		71,166	2,869	0	42,957	116,992	
07-5138		9702	Unemploy Ins Tech I	FT	A	GP	Juneau	205	14 A / B	12.0		47,052	1,897	0	34,667	83,616	
07-5141		9703	Unemploy Ins Tech I	FT	A	GP	Anchorage	200	14 A / B	12.0		44,316	1,787	0	33,726	79,829	
07-5145		9706	Unemploy Ins Tech II	FT	A	GP	Anchorage	200	15 K / L	12.0		61,871	2,494	0	39,762	104,127	
07-5150		9709	Investigator II	FT	A	GP	Anchorage	200	16 K / L	12.0		67,200	2,709	0	41,594	111,503	
07-5159		9711	Employ Sec Analyst III	FT	A	GP	Juneau	205	18 G	12.0		73,728	2,972	0	43,838	120,538	
07-5163		9712	Unemploy Ins Clm Ctr Mgr I	FT	A	SS	Fairbanks	99	16 N	12.0		83,971	0	0	47,700	131,671	
07-5173		9715	Unem Ins Qtl Contl Auditr	FT	A	GP	Juneau	205	15 B / C	12.0		50,826	2,049	0	35,964	88,839	
07-5178		9717	Employ Sec Analyst II	FT	A	GP	Juneau	205	17 A / B	12.0		57,356	2,312	0	38,209	97,877	
07-5189		9723	Appeals Officer III	FT	A	SS	Juneau	99	21 L / M	12.0		108,468	0	0	56,122	164,590	
07-5201		9726	Accounting Tech II	FT	A	GP	Juneau	205	14 B / C	12.0		47,976	1,934	0	34,984	84,894	
07-5210		9729	Unemploy Ins Tech III	FT	A	SS	Juneau	205	16 K / L	12.0		75,298	0	0	44,718	120,016	
07-5215		9732	Unemploy Ins Tech III	FT	A	SS	Anchorage	200	16 L	12.0		72,756	0	0	43,844	116,600	
07-5223		9737	Unemploy Ins Tech I	FT	A	GP	Juneau	205	14 G	12.0		55,956	2,256	0	37,728	95,940	
07-5233		9739	Field Auditor II	FT	A	GP	Anchorage	200	17 J	12.0		68,352	2,756	0	41,990	113,098	
07-5248		9744	Field Auditor I	FT	A	GP	Juneau	205	16 C / D	12.0		56,569	2,281	0	37,939	96,789	
07-5249		9745	Accounting Tech II	FT	A	GP	Juneau	205	14 B / C	12.0		47,976	1,934	0	34,984	84,894	
07-5253		9746	Employ Sec Analyst II	FT	A	GP	Juneau	205	17 A / B	12.0		57,356	2,312	0	38,209	97,877	
07-5274		9752	Accounting Tech II	FT	A	GP	Anchorage	200	14 K	12.0		57,324	2,311	0	38,198	97,833	
07-5284		9754	Unemploy Ins Tech I	FT	A	GP	Juneau	205	14 B / C	12.0		48,108	1,939	0	35,030	85,077	
07-5285		9755	Unemploy Ins Tech I	FT	A	GP	Anchorage	200	14 A / B	12.0		44,316	1,787	0	33,726	79,829	
07-5297		9758	Unemploy Ins Tech I	PT	A	GP	Anchorage	200	14 B / C	11.0		41,893	1,689	0	31,352	74,934	
07-5302		9759	Unemploy Ins Tech I	FT	A	GP	Anchorage	99	14 N / O	12.0		65,852	2,655	0	41,130	109,637	
07-5313		9763	Unemploy Ins Tech III	FT	A	SS	Anchorage	200	16 J	12.0		68,244	0	0	42,293	110,537	
07-5314		9764	Employ Sec Analyst II	FT	A	GP	Juneau	205	17 A / B	12.0		57,356	2,312	0	38,209	97,877	

Note: If a position is split, an asterisk (*) will appear in the Split/Count column. If the split position is also counted in the component, two asterisks (**) will appear in this column.
 [No valid job title] appearing in the Job Class Title indicates that the PCN has an invalid class code or invalid range for the class code effective date of this scenario.

Personal Services Expenditure Detail (1445)

Department of Labor and Workforce Development

Scenario: FY2020 Governor Amended (15636)
Component: Unemployment Insurance (2276)
RDU: Employment and Training Services (646)

Status	PCN	Tracking ID	Job Class Title	Time Status	Retire Code	Barg Unit	Location	Salary Sched	Range / Steps	Comp Months	Split / Count	Annual Salaries	COLA	Premium Pay	Annual Benefits	Total Costs	UGF Amount
07-5317		9766	Unemploy Ins Tech I	FT	A	GP	Juneau	205	14 B / C	12.0		48,108	1,939	0	35,030	85,077	
07-5337		9772	Unemploy Ins Tech I	FT	A	GP	Anchorage	200	14 A / B	12.0		44,316	1,787	0	33,726	79,829	
07-5351		9775	Asst Dir Employ Security	FT	A	SS	Juneau	99	22 M / N	12.0		119,397	0	0	59,879	179,276	
07-5375		9780	Unemploy Ins Tech III	FT	A	SS	Anchorage	99	16 P / Q	12.0		85,229	0	0	48,132	133,361	
07-5418		9788	Field Auditor I	FT	A	GP	Juneau	205	16 C / D	12.0		57,356	2,312	0	38,209	97,877	
07-5420		9789	Unemploy Ins Tech I	FT	A	GP	Juneau	205	14 G / J	12.0		58,101	2,342	0	38,465	98,908	
07-5449		9796	Employ Sec Analyst III	FT	A	SS	Juneau	205	18 K / L	12.0		85,040	0	0	48,067	133,107	
07-5457		9799	Accounting Tech II	FT	A	GP	Juneau	205	14 J	12.0		58,296	2,350	0	38,532	99,178	
07-5464		9802	Field Auditor I	FT	A	GP	Wasilla	200	16 B / C	12.0		52,809	2,129	0	36,646	91,584	
07-5469		9804	Unemploy Ins Tech III	FT	A	SS	Juneau	205	16 L / M	12.0		77,744	0	0	45,559	123,303	
07-5477		9807	Unemploy Ins Tech II	FT	A	GP	Juneau	205	15 B / C	12.0		51,354	2,070	0	36,146	89,570	
07-5478		9808	Unemploy Ins Tech I	FT	A	GP	Anchorage	200	14 J	12.0		55,524	2,238	0	37,579	95,341	
07-5480		9810	Employ Sec Analyst II	FT	A	GP	Juneau	205	17 A / B	12.0		57,356	2,312	0	38,209	97,877	
07-5482		9812	Employ/Unemploy Ins Tech Mgr	FT	A	SS	Juneau	205	20 K	12.0		96,732	0	0	52,087	148,819	
07-5502		9817	Employ/Unemploy Ins Tech Mgr	FT	A	SS	Juneau	99	20 L / M	12.0		102,106	0	0	53,934	156,040	
07-5515		9818	Unemploy Ins Tech I	FT	A	GP	Fairbanks	203	14 B / C	12.0		47,127	1,900	0	34,693	83,720	
07-5519		9821	Unemploy Ins Tech I	FT	A	GP	Anchorage	200	14 K / L	12.0		57,479	2,317	0	38,252	98,048	
07-5539		9834	Field Auditor I	FT	A	GP	Fairbanks	203	16 B / C	12.0		54,675	2,204	0	37,288	94,167	
07-5540		9835	Field Auditor I	FT	A	GP	Anchorage	200	16 J / K	12.0		65,517	2,641	0	41,015	109,173	
07-5543		9837	Unemploy Ins Tech I	FT	A	GP	Juneau	205	14 K	12.0		60,192	2,427	0	39,184	101,803	
07-5555		9841	Accounting Tech II	FT	A	GP	Anchorage	200	14 A / B	12.0		44,624	1,799	0	33,832	80,255	
07-5557		9842	Employ Sec Analyst II	FT	A	GP	Anchorage	200	17 B / C	12.0		56,401	2,274	0	37,881	96,556	
07-5560		9843	Publications Spec III	FT	A	GP	Juneau	205	19 J / K	12.0		82,254	3,316	0	46,769	132,339	
07-5561		9844	Unemploy Ins Tech II	FT	A	GP	Juneau	99	15 O	12.0		74,594	3,007	0	44,136	121,737	
07-5562		9845	Unemploy Ins Tech III	FT	A	SS	Juneau	205	16 F	12.0		69,408	0	0	42,693	112,101	
07-5570		9848	Unem Ins Qtl Contl Audit	FT	A	GP	Anchorage	200	15 L / M	12.0		64,226	2,589	0	40,571	107,386	
07-5586		9853	Unemploy Ins Tech I	FT	A	GP	Juneau	205	14 B / C	12.0		47,118	1,900	0	34,689	83,707	
07-5589		9855	Unemploy Ins Tech I	PT	A	GP	Anchorage	200	14 A / B	11.0		40,582	1,636	0	30,902	73,120	
07-5590		9856	Accounting Tech II	FT	A	GP	Juneau	205	14 J / K	12.0		58,770	2,369	0	38,695	99,834	

Note: If a position is split, an asterisk (*) will appear in the Split/Count column. If the split position is also counted in the component, two asterisks (**) will appear in this column.
 [No valid job title] appearing in the Job Class Title indicates that the PCN has an invalid class code or invalid range for the class code effective date of this scenario.

Personal Services Expenditure Detail (1445)

Department of Labor and Workforce Development

Scenario: FY2020 Governor Amended (15636)
 Component: Unemployment Insurance (2276)
 RDU: Employment and Training Services (646)

Status	PCN	Tracking ID	Job Class Title	Time Status	Retire Code	Barg Unit	Location	Salary Sched	Range / Steps	Comp Months	Split / Count	Annual Salaries	COLA	Premium Pay	Annual Benefits	Total Costs	UGF Amount
07-5599		9860	Unemploy Ins Tech I	FT	A	GP	Anchorage	200	14 K / L	12.0		57,557	2,320	0	38,278	98,155	
07-5601		9862	Unemploy Ins Tech I	FT	A	GP	Anchorage	200	14 A / B	12.0		44,316	1,787	0	33,726	79,829	
07-5603		9863	Unemploy Ins Tech I	FT	A	GP	Fairbanks	203	14 C / D	12.0		48,896	1,971	0	35,301	86,168	
07-5606		9865	Unemploy Ins Tech I	PT	A	GP	Fairbanks	203	14 B	11.0		42,306	1,706	0	31,494	75,506	
07-5607		9866	Unemploy Ins Tech I	FT	A	GP	Anchorage	200	14 J	12.0		55,524	2,238	0	37,579	95,341	
07-5614		9868	Unem Ins Qtl Contl Auditr	FT	A	GP	Anchorage	200	15 L / M	12.0		63,882	2,575	0	40,453	106,910	
07-5622		9870	Accounting Tech II	FT	A	GP	Juneau	205	14 A / B	12.0		46,536	1,876	0	34,489	82,901	
07-5624		9871	Administrative Assistant II	FT	A	GP	Juneau	205	14 D / E	12.0		52,260	2,107	0	36,457	90,824	
07-5626		9872	Unem Ins Qtl Contl Auditr	FT	A	GP	Fairbanks	99	15 R	12.0		81,707	3,294	0	46,581	131,582	
07-5643		9878	Unemploy Ins Tech I	PT	A	GP	Anchorage	200	14 A / B	11.0		40,582	1,636	0	30,902	73,120	
07-5654		9881	Employ Sec Analyst III	FT	A	GP	Juneau	205	18 C / D	12.0		65,040	2,622	0	40,851	108,513	
07-5659		9884	Employ Sec Analyst III	FT	A	GP	Juneau	205	18 G	12.0		73,728	2,972	0	43,838	120,538	
07-5660		9885	Unemploy Ins Tech I	FT	A	GP	Anchorage	200	14 J	12.0		55,524	2,238	0	37,579	95,341	
07-5665		9889	Unemploy Ins Tech I	FT	A	GP	Juneau	205	14 A / B	12.0		46,536	1,876	0	34,489	82,901	
07-5666		9890	Unemploy Ins Tech I	FT	A	GP	Juneau	205	14 J	12.0		58,296	2,350	0	38,532	99,178	
07-5672		9892	Unem Quality Contl Supervisor	FT	A	SS	Juneau	205	19 M	12.0		96,516	0	0	52,012	148,528	
07-5678		9893	Unemploy Ins Tech I	FT	A	GP	Anchorage	200	14 G	12.0		53,292	2,148	0	36,812	92,252	
07-5680		9894	Field Auditor I	FT	A	GP	Wasilla	200	16 C / D	12.0		54,628	2,202	0	37,271	94,101	
07-5681		9895	Field Auditor II	FT	A	SS	Anchorage	99	17 L	12.0		78,194	0	0	45,713	123,907	
07-5682		9896	Unemploy Ins Tech I	PT	A	GP	Juneau	205	14 A / B	11.0		42,615	1,718	0	31,601	75,934	
07-5689		9897	Unem Ins Qtl Contl Auditr	FT	A	GP	Juneau	205	15 B / C	12.0		51,656	2,082	0	36,250	89,988	
07-5694		9900	Employ Sec Analyst III	FT	A	SS	Juneau	99	18 F	12.0		84,936	0	0	48,031	132,967	
07-5711		9909	Unemploy Ins Tech I	FT	A	GP	Juneau	99	14 M	12.0		64,488	2,600	0	40,661	107,749	
07-5712		9910	Unemploy Ins Tech II	FT	A	GP	Juneau	205	15 B / C	12.0		51,354	2,070	0	36,146	89,570	
07-5713		9911	Unemploy Ins Tech III	FT	A	SS	Juneau	205	16 C / D	12.0		63,904	0	0	40,800	104,704	
07-5714		9912	Unem Ins Qtl Contl Auditr	FT	A	GP	Fairbanks	203	15 A / B	12.0		48,896	1,971	0	35,301	86,168	
07-5715		9913	Unemploy Ins Tech I	PT	A	GP	Juneau	205	14 A / B	11.0		42,615	1,718	0	31,601	75,934	
07-5717		9914	Employ Sec Analyst III	FT	A	GP	Juneau	205	18 C / D	12.0		65,960	2,659	0	41,167	109,786	
07-5720		9916	Unemploy Ins Tech I	PT	A	GP	Juneau	205	14 A / B	11.0		42,615	1,718	0	31,601	75,934	

Note: If a position is split, an asterisk (*) will appear in the Split/Count column. If the split position is also counted in the component, two asterisks (**) will appear in this column.
 [No valid job title] appearing in the Job Class Title indicates that the PCN has an invalid class code or invalid range for the class code effective date of this scenario.

Personal Services Expenditure Detail (1445)

Department of Labor and Workforce Development

Scenario: FY2020 Governor Amended (15636)
 Component: Unemployment Insurance (2276)
 RDU: Employment and Training Services (646)

Status	PCN	Tracking ID	Job Class Title	Time Status	Retire Code	Barg Unit	Location	Salary Sched	Range / Steps	Comp Months	Split / Count	Annual Salaries	COLA	Premium Pay	Annual Benefits	Total Costs	UGF Amount
07-5721		9917	Employ Sec Analyst II	FT	A	GP	Juneau	205	17 F / G	12.0		67,703	2,729	0	41,767	112,199	
07-5724		9918	Employ Sec Analyst III	FT	A	SS	Juneau	99	18 M / N	12.0		99,427	0	0	53,013	152,440	
07-5725		9919	Unemploy Ins Tech I	PT	A	GP	Anchorage	200	14 J / K	11.0		52,322	2,109	0	34,938	89,369	
07-5727		9921	Field Auditor I	FT	A	GP	Juneau	205	16 E / F	12.0		60,916	2,456	0	39,433	102,805	
07-5738		9924	Unemploy Ins Tech I	FT	A	GP	Anchorage	200	14 G / J	12.0		55,245	2,227	0	37,484	94,956	
07-5739		9925	Field Auditor I	FT	A	GP	Kenai	200	16 J	12.0		63,960	2,578	0	40,480	107,018	
07-5747		9928	Employ Sec Analyst II	FT	A	GP	Juneau	205	17 C / D	12.0		61,094	2,463	0	39,494	103,051	
07-5751		9930	Unemploy Ins Tech I	PT	A	GP	Juneau	205	14 A / B	11.0		43,067	1,736	0	31,756	76,559	
07-5757		9932	Unemploy Ins Tech II	FT	A	GP	Fairbanks	203	15 L / M	12.0		65,709	2,649	0	41,081	109,439	
07-5763		9935	Unemploy Ins Tech II	FT	A	GP	Juneau	205	15 K	12.0		64,704	2,608	0	40,736	108,048	
07-5764		9936	Unemploy Ins Tech I	FT	A	GP	Fairbanks	203	14 C / D	12.0		48,896	1,971	0	35,301	86,168	
07-5766		9938	Employ Sec Analyst III	FT	A	SS	Juneau	99	18 M	12.0		96,516	0	0	52,012	148,528	
07-5767		9939	Employ Sec Analyst III	FT	A	GP	Juneau	205	18 D / E	12.0		67,245	2,711	0	41,609	111,565	
07-5768		9940	Appeals Officer II	FT	A	GP	Juneau	205	19 L / M	12.0		88,037	3,549	0	48,757	140,343	
07-5769		9941	Appeals Officer II	FT	A	GP	Juneau	205	19 J	12.0		82,032	3,307	0	46,693	132,032	
07-5776		9943	Unemploy Ins Tech I	PT	A	GP	Anchorage	200	14 B / C	11.0		41,893	1,689	0	31,352	74,934	
07-5780		9945	Investigator II	FT	A	GP	Anchorage	99	16 N	12.0		73,392	2,959	0	43,722	120,073	
07-5783		9946	Unemploy Ins Clm Ctr Mgr II	FT	A	SS	Juneau	205	20 K	12.0		96,732	0	0	52,087	148,819	
07-5784		9947	Accounting Tech II	FT	A	GP	Juneau	205	14 A / B	12.0		46,536	1,876	0	34,489	82,901	
07-5785		9948	Unemploy Ins Tech I	FT	A	GP	Anchorage	200	14 J	12.0		55,524	2,238	0	37,579	95,341	
07-5787		9950	Unemploy Ins Tech I	PT	A	GP	Juneau	205	14 A / B	11.0		43,067	1,736	0	31,756	76,559	
07-5804		9956	Unemploy Ins Tech I	FT	A	GP	Juneau	205	14 A / B	12.0		46,536	1,876	0	34,489	82,901	
07-5813		9959	Unemploy Ins Tech I	PT	A	GP	Juneau	205	14 A / B	11.0		43,067	1,736	0	31,756	76,559	
07-5816		9962	Employ Sec Analyst II	FT	A	GP	Juneau	205	17 J / K	12.0		72,257	2,913	0	43,332	118,502	
07-5817		9963	Unemploy Ins Tech I	FT	A	GP	Juneau	205	14 A / B	12.0		46,536	1,876	0	34,489	82,901	
07-5820		9965	Unemploy Ins Tech I	PT	A	GP	Juneau	205	14 A / B	11.0		43,067	1,736	0	31,756	76,559	
07-5821		9966	Administrative Assistant I	FT	A	GP	Juneau	205	12 C / D	12.0		43,944	1,772	0	33,598	79,314	
07-5824		9968	Unemploy Ins Tech I	FT	A	GP	Anchorage	200	14 A / B	12.0		44,316	1,787	0	33,726	79,829	
07-5832		9973	Accounting Tech I	FT	A	GP	Juneau	205	12 A / B	12.0		40,848	1,647	0	32,534	75,029	

Note: If a position is split, an asterisk (*) will appear in the Split/Count column. If the split position is also counted in the component, two asterisks (**) will appear in this column.
 [No valid job title] appearing in the Job Class Title indicates that the PCN has an invalid class code or invalid range for the class code effective date of this scenario.

Personal Services Expenditure Detail (1445)

Department of Labor and Workforce Development

Scenario: FY2020 Governor Amended (15636)
 Component: Unemployment Insurance (2276)
 RDU: Employment and Training Services (646)

Status PCN	Tracking ID	Job Class Title	Time Status	Retire Code	Barg Unit	Location	Salary Sched	Range / Steps	Comp Months	Split / Count	Annual Salaries	COLA	Premium Pay	Annual Benefits	Total Costs	UGF Amount
07-5833	9974	Unemploy Ins Tech I	FT	A	GP	Anchorage	200	14 G / J	12.0		55,245	2,227	0	37,484	94,956	
07-5838	9975	Unemploy Ins Tech I	PT	A	GP	Juneau	205	14 B / C	11.0		44,055	1,776	0	32,096	77,927	
07-5840	9976	Unemploy Ins Tech I	FT	A	GP	Juneau	205	14 J	12.0		58,296	2,350	0	38,532	99,178	
07-5846	9979	Unem Ins Qtl Contl Auditr	FT	A	GP	Juneau	205	15 A / B	12.0		49,844	2,009	0	35,627	87,480	
07-5850	9983	Unemploy Ins Tech I	FT	A	GP	Anchorage	200	14 K	12.0		57,324	2,311	0	38,198	97,833	
07-5854	9985	Unemploy Ins Tech II	FT	A	GP	Juneau	205	15 B / C	12.0		50,675	2,043	0	35,912	88,630	
07-5857	9988	Unemploy Ins Tech I	FT	A	GG	Anchorage	99	14 P / Q	12.0		68,873	2,777	0	42,169	113,819	
07-5863	9992	Unemploy Ins Tech I	FT	A	GG	Anchorage	200	14 K	12.0		57,324	2,311	0	38,198	97,833	
07-5869	9996	Unemploy Ins Tech I	PT	A	GP	Anchorage	200	14 A / B	11.0		40,582	1,636	0	30,902	73,120	
07-5872	9998	Unemploy Ins Tech I	FT	A	GP	Juneau	205	14 A / B	12.0		46,536	1,876	0	34,489	82,901	
07-5875	10000	Unemploy Ins Tech I	PT	A	GP	Juneau	205	14 A / B	11.0		43,067	1,736	0	31,756	76,559	
07-5878	10001	Unemploy Ins Tech I	PT	A	GP	Anchorage	200	14 A / B	11.0		40,582	1,636	0	30,902	73,120	
07-5883	10003	Unemploy Ins Tech I	FT	A	GP	Juneau	205	14 C / D	12.0		49,165	1,982	0	35,393	86,540	
07-5884	10004	Unemploy Ins Tech I	FT	A	GP	Juneau	205	14 K / L	12.0		60,926	2,456	0	39,437	102,819	
07-5898	10010	Unemploy Ins Tech I	FT	A	GP	Juneau	205	14 G / J	12.0		56,249	2,268	0	37,829	96,346	
07-5901	10011	Employ Sec Analyst III	FT	A	SS	Juneau	99	18 L / M	12.0		90,506	0	0	49,946	140,452	
07-5917	10023	Unemploy Ins Tech I	FT	A	GG	Anchorage	99	14 N / O	12.0		64,842	2,614	0	40,783	108,239	
07-5921	10027	Unemploy Ins Tech II	FT	A	GP	Juneau	205	15 C / D	12.0		53,238	2,146	0	36,794	92,178	
07-5922	10028	Employ/Unemploy Ins Tech Mgr	FT	A	SS	Anchorage	200	20 M / N	12.0		99,545	0	0	53,054	152,599	
07-5923	10029	Unemploy Ins Tech I	FT	A	GP	Juneau	99	14 Q	12.0		74,722	3,012	0	44,180	121,914	
07-5924	10030	Employ Sec Analyst III	FT	A	SS	Juneau	205	18 F	12.0		79,452	0	0	46,146	125,598	
07-5943	10037	Unemploy Ins Tech I	PT	A	GP	Juneau	205	14 A / B	11.0		42,615	1,718	0	31,601	75,934	
07-5944	10038	Unemploy Ins Tech III	FT	A	SS	Anchorage	200	16 M	12.0		75,132	0	0	44,661	119,793	
07-5952	10046	Unemploy Ins Tech I	FT	A	GP	Juneau	205	14 J / K	12.0		59,955	2,417	0	39,103	101,475	
07-5966	10058	Unemploy Ins Tech II	FT	A	GP	Anchorage	99	15 N	12.0		68,466	2,760	0	42,029	113,255	
07-5967	10059	Unemploy Ins Tech I	PT	A	GP	Juneau	205	14 B / C	11.0		43,923	1,771	0	32,050	77,744	
07-5986	10077	Employ Sec Analyst II	FT	A	GP	Anchorage	200	17 G / J	12.0		68,010	2,742	0	41,872	112,624	
07-6014	24880	Unemploy Ins Tech I	PT	A	GP	Anchorage	200	14 J	11.0		50,897	2,052	0	34,448	87,397	
07-6015	24881	Unemploy Ins Tech I	PT	A	GP	Anchorage	200	14 B / C	11.0		41,893	1,689	0	31,352	74,934	

Note: If a position is split, an asterisk (*) will appear in the Split/Count column. If the split position is also counted in the component, two asterisks (**) will appear in this column.
 [No valid job title] appearing in the Job Class Title indicates that the PCN has an invalid class code or invalid range for the class code effective date of this scenario.

Personal Services Expenditure Detail (1445)

Department of Labor and Workforce Development

Scenario: FY2020 Governor Amended (15636)
Component: Unemployment Insurance (2276)
RDU: Employment and Training Services (646)

Status PCN	Tracking ID	Job Class Title	Time Status	Retire Code	Barg Unit	Location	Salary Sched	Range / Steps	Comp Months	Split / Count	Annual Salaries	COLA	Premium Pay	Annual Benefits	Total Costs	UGF Amount
07-6017	24883	Unemploy Ins Tech I	PT	A	GP	Anchorage	200	14 C / D	11.0		43,252	1,744	0	31,819	76,815	
07-6021	24887	Unemploy Ins Tech I	PT	A	GP	Juneau	205	14 F / G	11.0		50,061	2,018	0	34,160	86,239	
07-6023	24889	Unemploy Ins Tech I	PT	A	GP	Juneau	205	14 A / B	11.0		42,615	1,718	0	31,601	75,934	
07-6024	24890	Unemploy Ins Tech I	PT	A	GP	Juneau	205	14 A / B	11.0		43,067	1,736	0	31,756	76,559	
07-6025	24891	Unemploy Ins Tech I	PT	A	GP	Juneau	205	14 A / B	11.0		42,615	1,718	0	31,601	75,934	
07-6026	24892	Unemploy Ins Tech I	PT	A	GP	Juneau	205	14 B / C	11.0		43,461	1,752	0	31,891	77,104	
07-6027	24893	Unemploy Ins Tech I	PT	A	GP	Juneau	205	14 A / B	11.0		42,615	1,718	0	31,601	75,934	
21-3054	17748	Employ Sec Analyst II	FT	A	GP	Juneau	99	17 M	12.0		79,391	3,201	0	45,785	128,377	

	Total Positions	New	Deleted
Full Time Positions:	149	0	0
Part Time Positions:	33	0	0
Non Permanent Positions:	0	0	0
Positions in Component:	182	0	0
Total Component Months:	2151.0		

Total Salary Costs:	11,060,524
Total COLA:	332,607
Total Premium Pay:	0
Total Benefits:	7,127,871
Total Pre-Vacancy:	18,521,002
Minus Vacancy Adjustment of 4.00%:	(740,840)
Total Post-Vacancy:	17,780,162
Plus Lump Sum Premium Pay:	0
Personal Services Line 100:	17,780,162

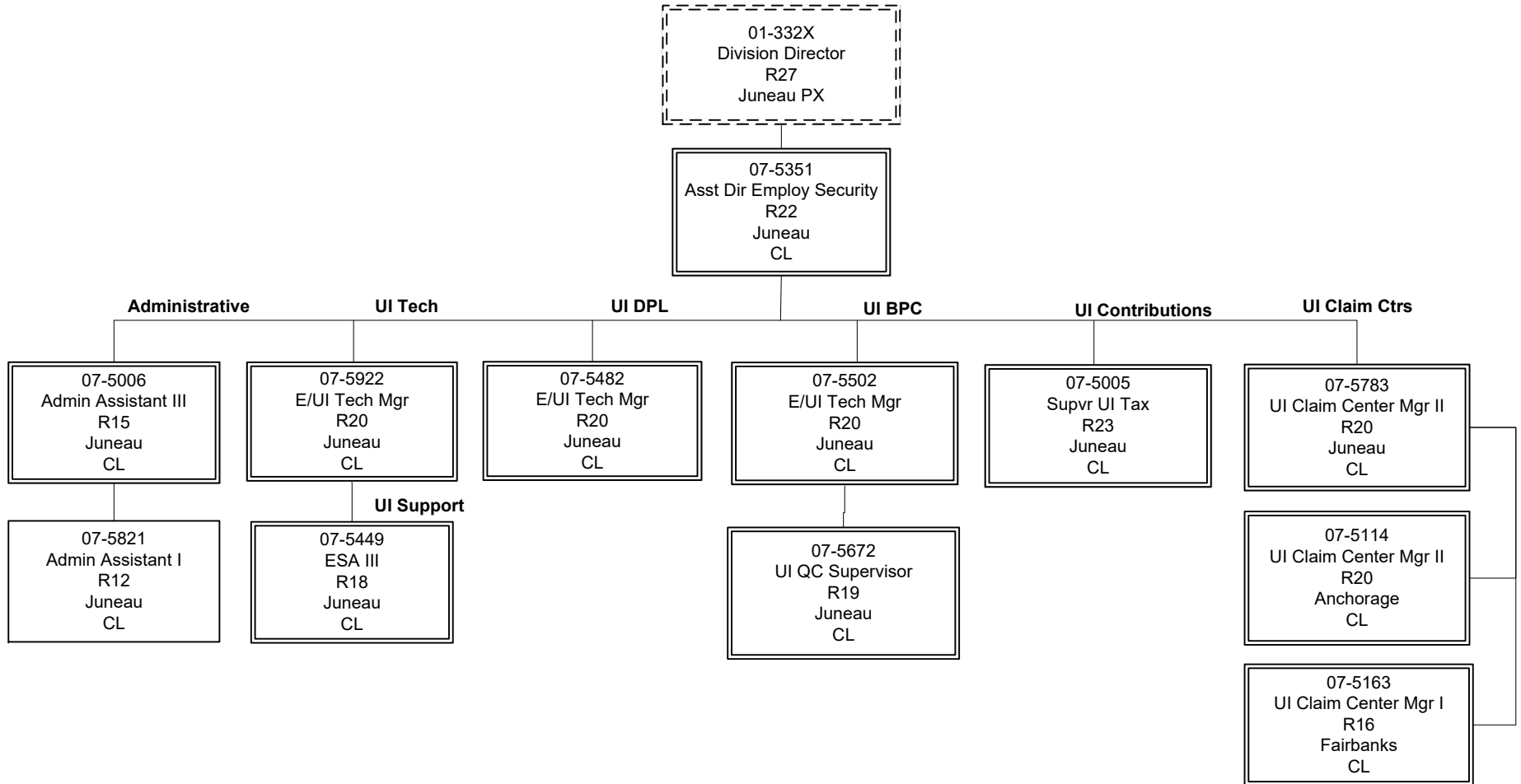
PCN Funding Sources:	Pre-Vacancy	Post-Vacancy	Percent
1002 Federal Receipts	17,689,006	16,981,446	95.51%
1005 General Fund/Program Receipts	5,348	5,134	0.03%
1007 Interagency Receipts	120,620	115,795	0.65%
1054 State Employment & Training Program	353,014	338,893	1.91%
1151 Technical Vocational Education Program Account	353,014	338,893	1.91%
Total PCN Funding:	18,521,002	17,780,162	100.00%

Note: If a position is split, an asterisk (*) will appear in the Split/Count column. If the split position is also counted in the component, two asterisks (**) will appear in this column. [No valid job title] appearing in the Job Class Title indicates that the PCN has an invalid class code or invalid range for the class code effective date of this scenario.

Department of Labor and Workforce Development

Division of Employment and Training Services

Unemployment Insurance (UI) Program



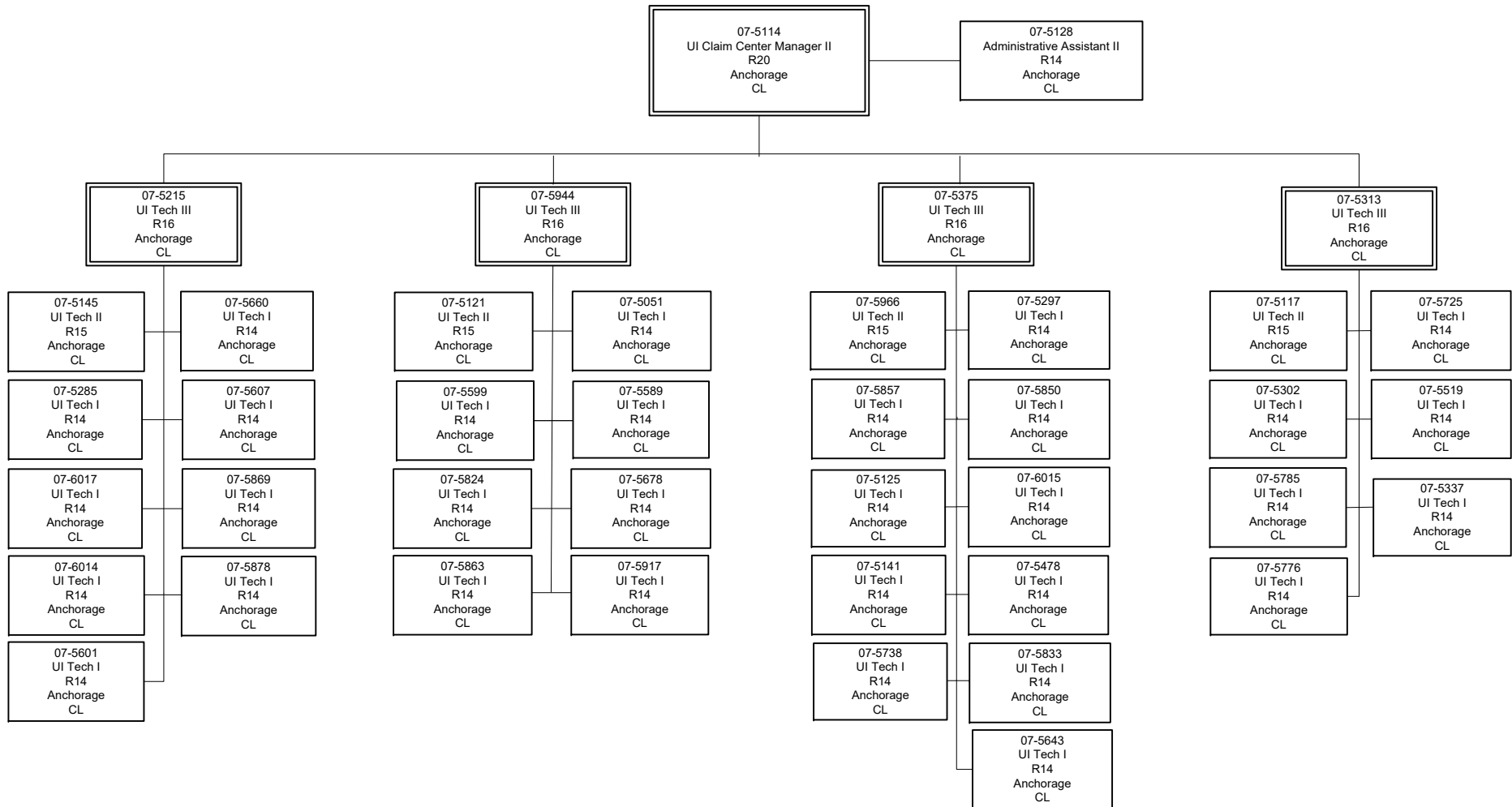
ESA = Employment Security Analyst
 E/UI = Employment/Unemployment Insurance
 UI = Unemployment Insurance

Position counted in
 another component

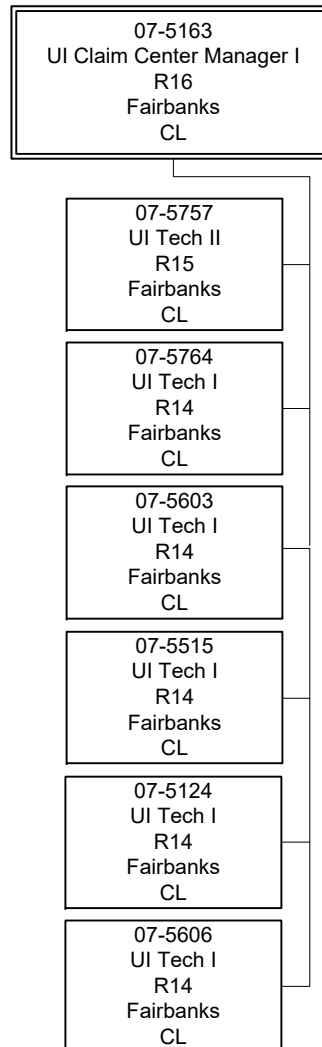
Department of Labor and Workforce Development

Division of Employment and Training Services

Unemployment Insurance Program - Anchorage UI Claim Center



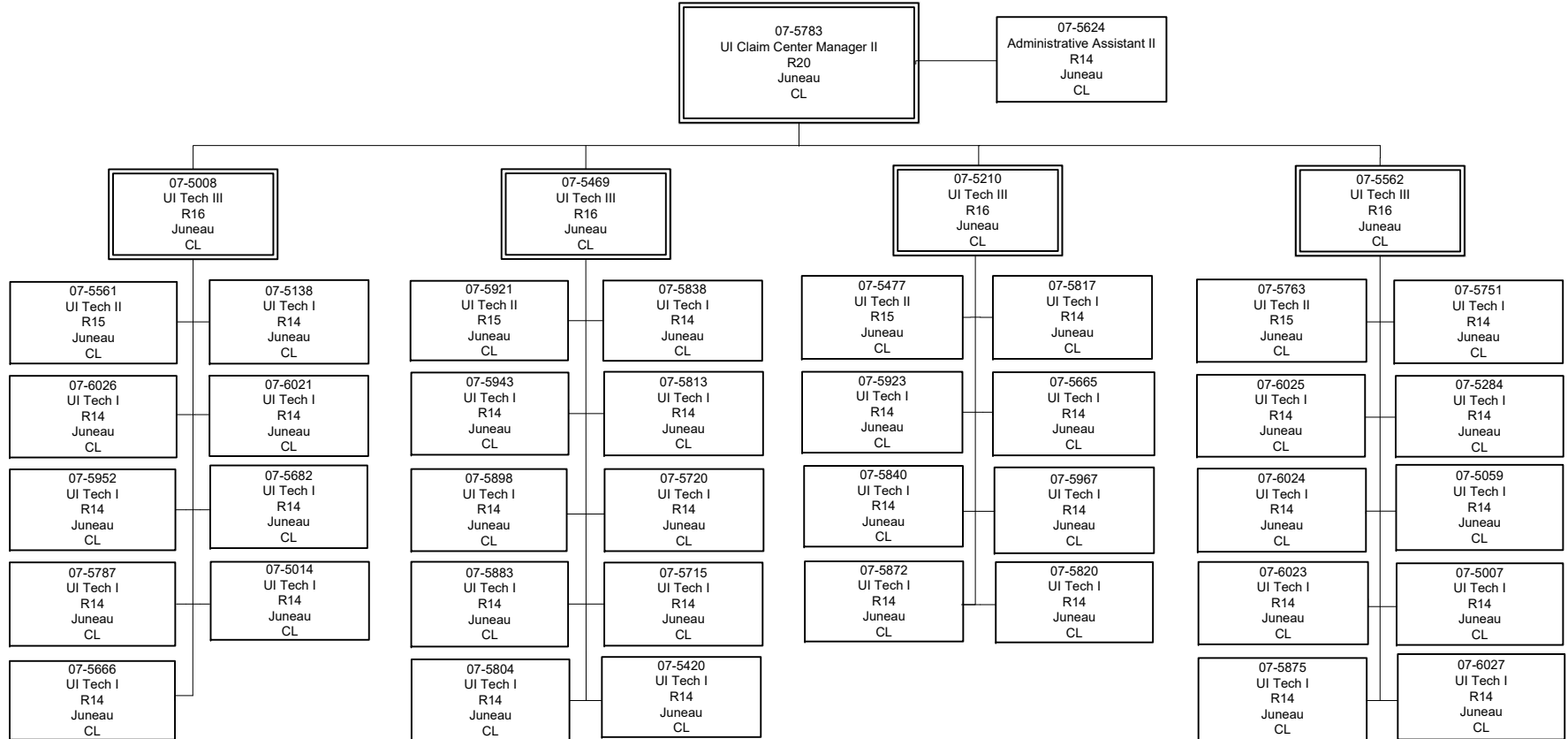
Department of Labor and Workforce Development
Division of Employment and Training Services
Unemployment Insurance Program - Fairbanks UI Claim Center



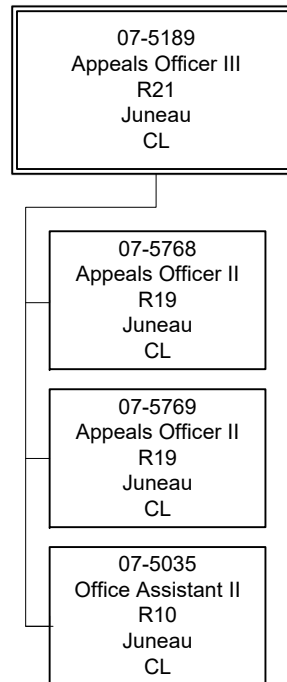
Department of Labor and Workforce Development

Division of Employment and Training Services

Unemployment Insurance Program - Juneau UI Claim Center



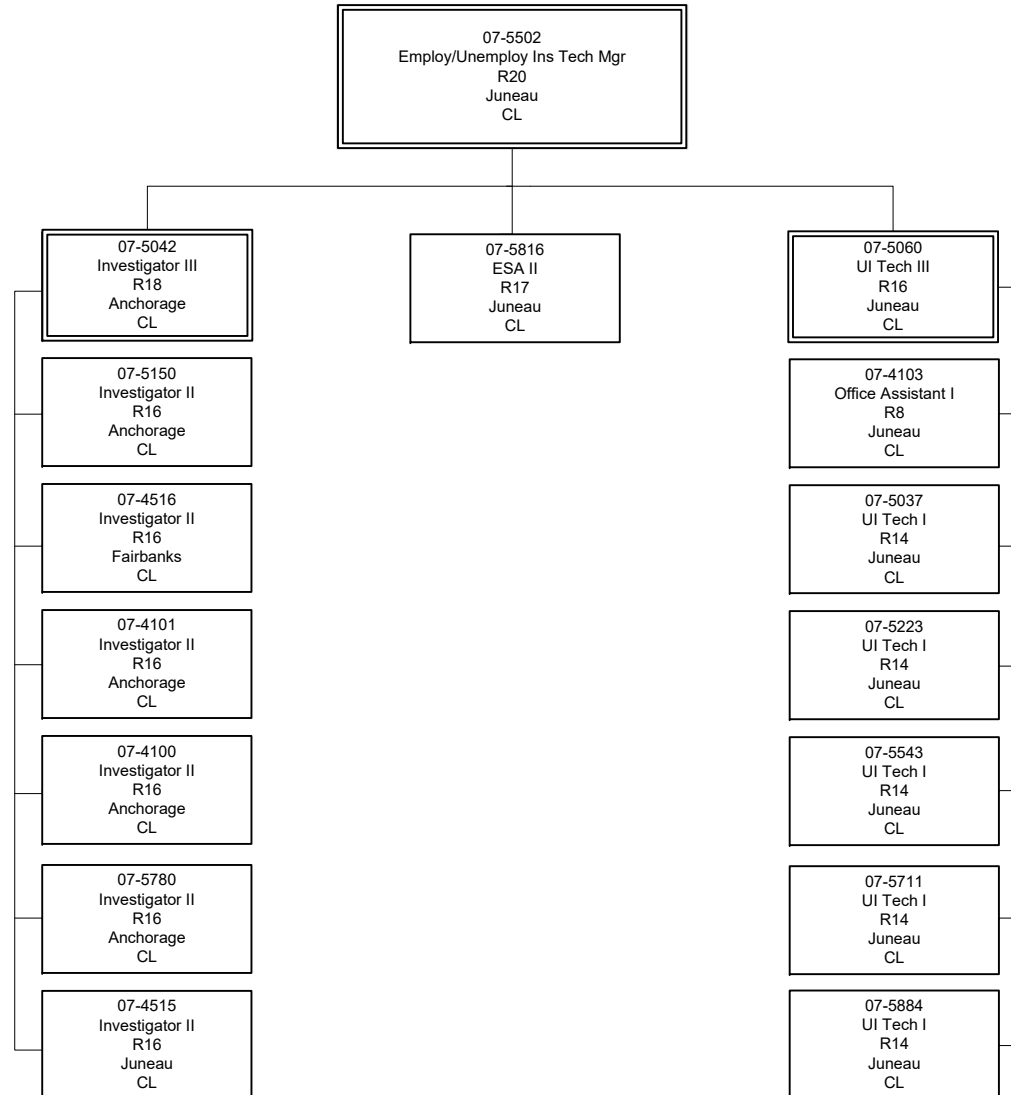
Department of Labor and Workforce Development
Division of Employment and Training Services
Unemployment Insurance Program - UI Appeals Unit



Department of Labor and Workforce Development

Division of Employment and Training Services

Unemployment Insurance Program - UI Benefit Payment Control Unit

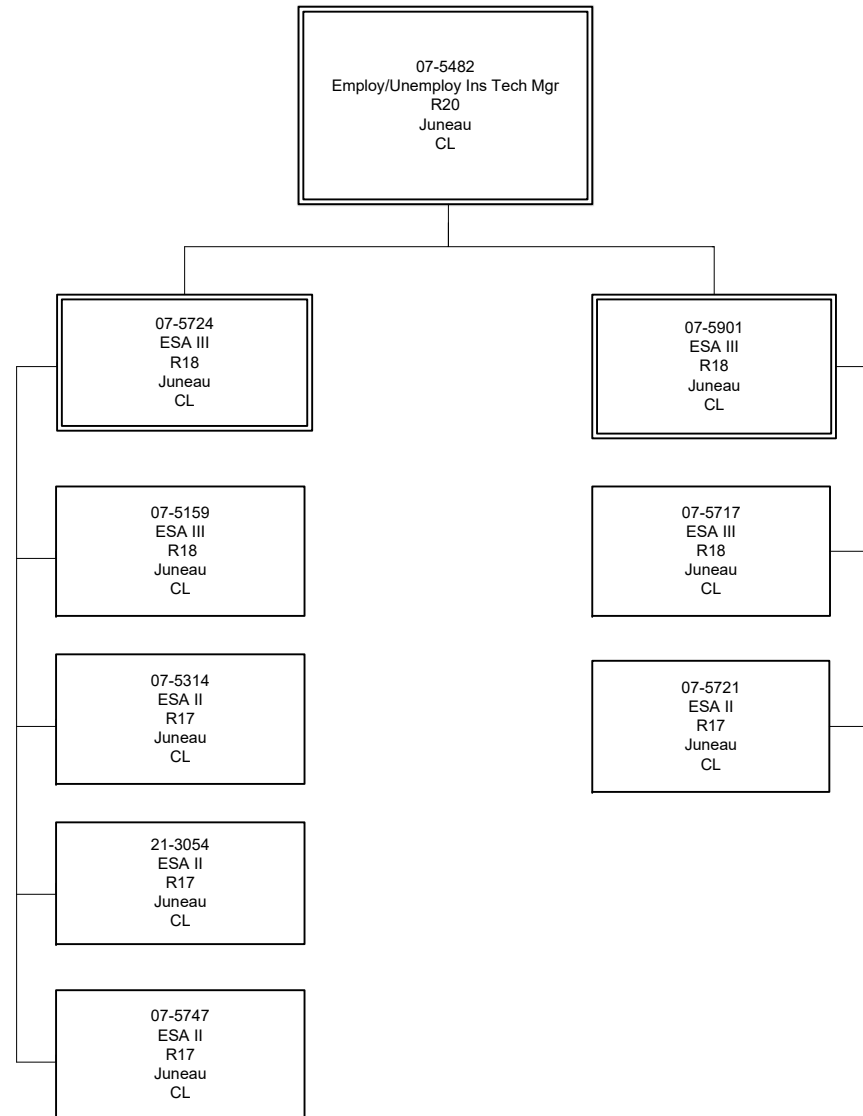


ESA = Employment Security Analyst
 UI = Unemployment Insurance

Department of Labor and Workforce Development

Division of Employment and Training Services

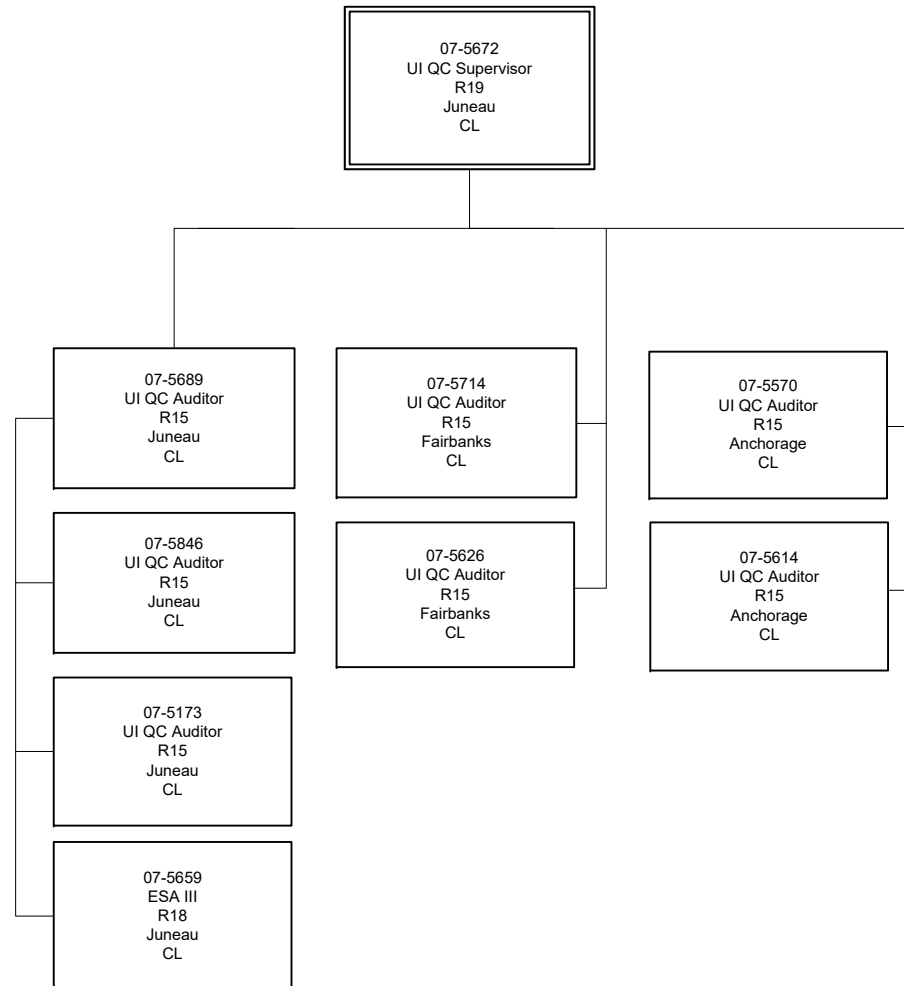
Unemployment Insurance Program - DP Liaison Unit



Department of Labor and Workforce Development

Division of Employment and Training Services

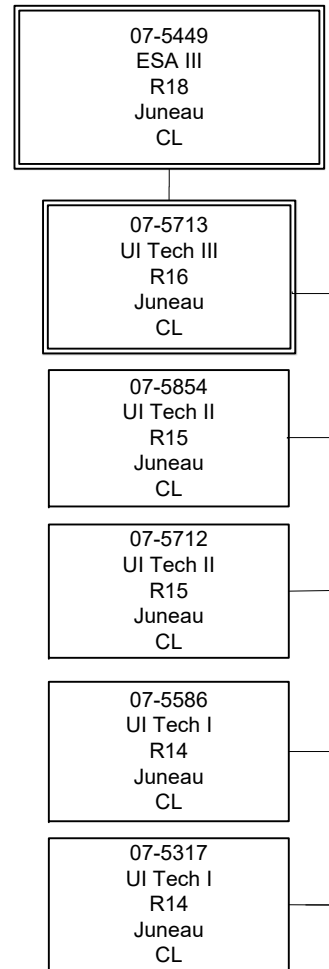
Unemployment Insurance Program - UI Quality Control Unit



Department of Labor and Workforce Development

Division of Employment and Training Services

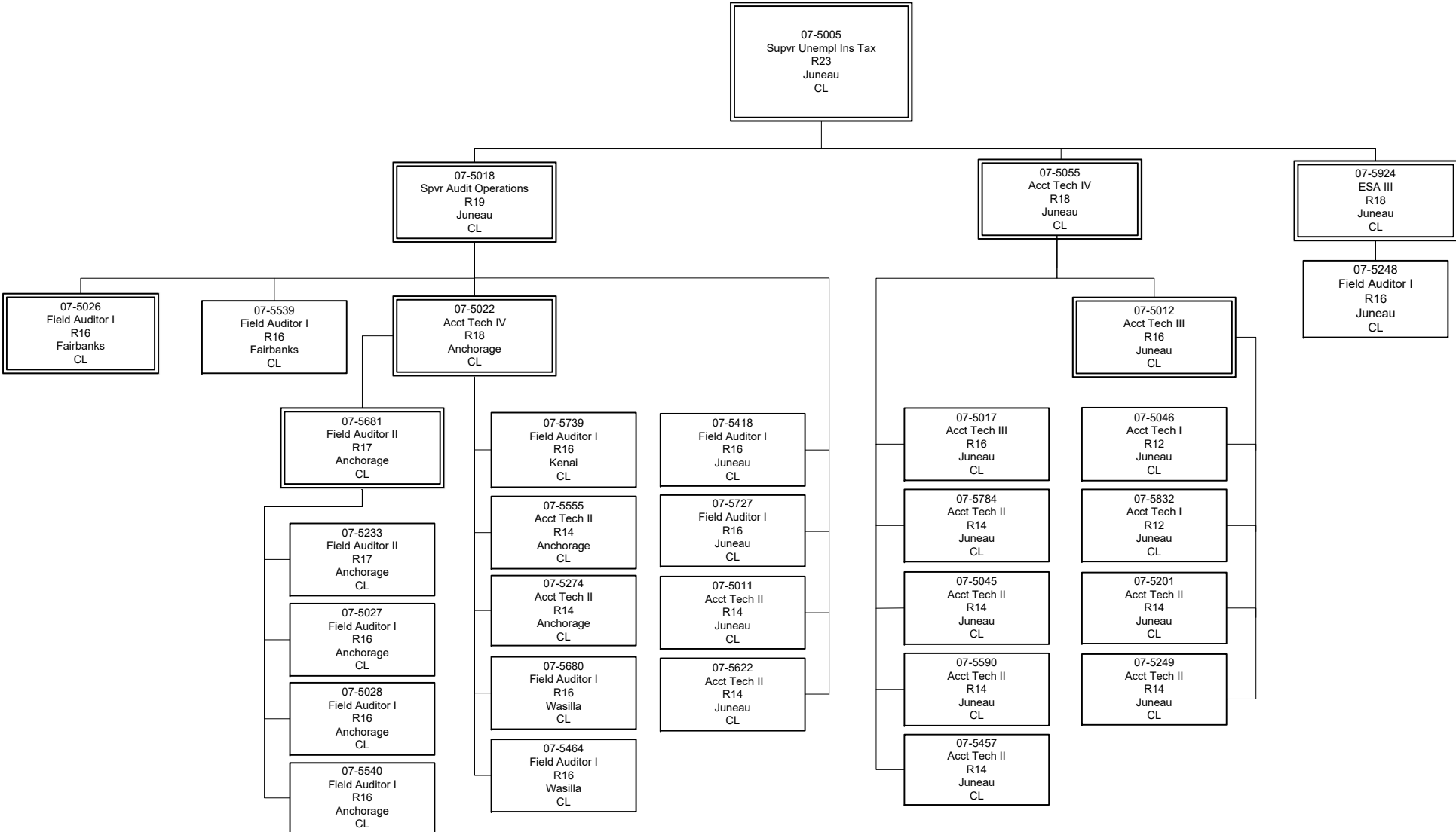
Unemployment Insurance Program - UI Support Unit



Department of Labor and Workforce Development

Division of Employment and Training Services

Unemployment Insurance Program - UI Tax & Program Integrity



Acct Tech = Accounting Technician

Department of Labor and Workforce Development

Division of Employment and Training Services

Unemployment Insurance Program - UI Technical Unit

