

**Component Detail (1077)**  
**Department of Labor and Workforce Development**

**Component:** Wage and Hour Administration (345)

Non-Formula Component

**RDU:** Labor Standards and Safety (113)

IRIS AP Type: B7WH

	FY2018 Actuals (15158)	FY2019 Conference Committee (14954)	FY2019 Authorized (14962)	FY2019 Management Plan (14994)	FY2020 Governor (15610)	FY2020 Governor Amended (15636)	FY2020 Governor vs FY2020 Governor Amended		
1000 Personal Services	1,643.5	1,997.2	1,997.2	1,927.1	1,986.3	1,927.1	-59.2	-3.0%	
2000 Travel	6.9	4.8	4.8	4.8	4.8	1.3	-3.5	-72.9%	
3000 Services	615.7	379.3	379.3	449.4	449.4	449.4	0.0	0.0%	
4000 Commodities	9.9	12.0	12.0	12.0	12.0	12.0	0.0	0.0%	
5000 Capital Outlay	0.0	0.0	0.0	0.0	0.0	0.0	0.0	0.0%	
7000 Grants, Benefits	0.0	0.0	0.0	0.0	0.0	0.0	0.0	0.0%	
8000 Miscellaneous	0.0	0.0	0.0	0.0	0.0	0.0	0.0	0.0%	
<b>Totals</b>	<b>2,276.0</b>	<b>2,393.3</b>	<b>2,393.3</b>	<b>2,393.3</b>	<b>2,452.5</b>	<b>2,389.8</b>	<b>-62.7</b>	<b>-2.6%</b>	
<b><u>Funding Sources:</u></b>									
1004 Gen Fund (UGF)	1,807.7	1,785.8	1,785.8	1,785.8	1,825.9	1,782.3	-43.6	-2.4%	
1007 I/A Rcpts (Other)	468.3	607.5	607.5	607.5	626.6	607.5	-19.1	-3.0%	
<b><u>Funding Totals:</u></b>									
<b>Unrestricted General (UGF)</b>	<b>1,807.7</b>	<b>1,785.8</b>	<b>1,785.8</b>	<b>1,785.8</b>	<b>1,825.9</b>	<b>1,782.3</b>	<b>-43.6</b>	<b>-2.4%</b>	
<b>Designated General (DGF)</b>	<b>0.0</b>	<b>0.0</b>	<b>0.0</b>	<b>0.0</b>	<b>0.0</b>	<b>0.0</b>	<b>0.0</b>	<b>0.0%</b>	
<b>Other</b>	<b>468.3</b>	<b>607.5</b>	<b>607.5</b>	<b>607.5</b>	<b>626.6</b>	<b>607.5</b>	<b>-19.1</b>	<b>-3.0%</b>	
<b>Federal</b>	<b>0.0</b>	<b>0.0</b>	<b>0.0</b>	<b>0.0</b>	<b>0.0</b>	<b>0.0</b>	<b>0.0</b>	<b>0.0%</b>	
<b><u>Positions:</u></b>									
Permanent Full Time	21	21	21	21	21	21	0	0.0%	
Permanent Part Time	0	0	0	0	0	0	0	0.0%	
Non Permanent	0	0	0	0	0	0	0	0.0%	

**Change Record Detail - Multiple Scenarios with Descriptions (294)**  
**Department of Labor and Workforce Development**

**Component:** Wage and Hour Administration (345)  
**RDU:** Labor Standards and Safety (113)

Scenario/Change Record Title	Trans Type	Totals	Personal Services	Travel	Services	Commodities	Capital Outlay	Grants, Benefits	Miscellaneous	PFT	Positions PPT	NP
***** Changes From FY2019 Conference Committee To FY2019 Authorized *****												
<b>FY2019 Conference Committee</b>												
	ConfCom	2,393.3	1,997.2	4.8	379.3	12.0	0.0	0.0	0.0	21	0	0
1004 Gen Fund		1,785.8										
1007 I/A Rcpts		607.5										
<b>Subtotal</b>		<b>2,393.3</b>	<b>1,997.2</b>	<b>4.8</b>	<b>379.3</b>	<b>12.0</b>	<b>0.0</b>	<b>0.0</b>	<b>0.0</b>	<b>21</b>	<b>0</b>	<b>0</b>
***** Changes From FY2019 Authorized To FY2019 Management Plan *****												
<b>Align Authority with Anticipated Expenditures</b>												
	LIT	0.0	-70.1	0.0	70.1	0.0	0.0	0.0	0.0	0	0	0
Transfer personal services authority to pay anticipated services expenditures related to Department of Law legal fees. Personal services expenditures will be limited to the amount of available funding, which will impact the ability to fill positions within the component.												
<b>Subtotal</b>		<b>2,393.3</b>	<b>1,927.1</b>	<b>4.8</b>	<b>449.4</b>	<b>12.0</b>	<b>0.0</b>	<b>0.0</b>	<b>0.0</b>	<b>21</b>	<b>0</b>	<b>0</b>
***** Changes From FY2019 Management Plan To FY2020 Governor Amended *****												
<b>Executive Branch 50% Travel Reduction</b>												
	Dec	-3.5	0.0	-3.5	0.0	0.0	0.0	0.0	0.0	0	0	0
1004 Gen Fund		-3.5										
50% executive branch travel reduction based on actual costs of travel in FY2018. Exceptions were made to travel essential to public safety, health, and disaster management.												
<b>Totals</b>		<b>2,389.8</b>	<b>1,927.1</b>	<b>1.3</b>	<b>449.4</b>	<b>12.0</b>	<b>0.0</b>	<b>0.0</b>	<b>0.0</b>	<b>21</b>	<b>0</b>	<b>0</b>

## Personal Services Expenditure Detail (1445)

### Department of Labor and Workforce Development

Scenario: FY2020 Governor Amended (15636)  
 Component: Wage and Hour Administration (345)  
 RDU: Labor Standards and Safety (113)

Status PCN	Tracking ID	Job Class Title	Time Status	Retire Code	Barg Unit	Location	Salary Sched	Range / Steps	Comp Months	Split / Count	Annual Salaries	COLA	Premium Pay	Annual Benefits	Total Costs	UGF Amount
07-1407	9459	Investigator II	FT	A	GP	Anchorage	200	16 L	12.0		68,184	2,749	0	41,932	112,865	68,848
07-1503	9461	Investigator V	FT	A	SS	Anchorage	200	21 J	12.0		95,268	0	0	51,583	146,851	146,851
07-2014	9506	Administrative Assistant I	FT	A	GP	Juneau	205	12 B	3.0	*	10,458	422	0	8,218	19,098	19,098
07-2016	9507	Regulations Spec II	FT	A	GP	Juneau	205	16 B	2.0	*	9,169	370	0	6,234	15,773	15,773
07-2040	9518	Administrative Officer II	FT	A	SS	Juneau	205	19 F	3.0	*	21,320	0	0	12,037	33,357	33,357
07-2055	9523	Admin Asst III	FT	A	SS	Anchorage	600	15 B / C	3.0	*	13,645	0	0	9,399	23,044	23,044
07-2071	9534	Wage-Hour Technician	FT	A	GP	Anchorage	200	12 C / D	12.0		41,804	1,685	0	32,863	76,352	46,575
07-2074	9537	Investigator II	FT	A	GP	Anchorage	200	16 D / E	12.0		56,656	2,284	0	37,969	96,909	68,805
07-2081	51	Investigator II	FT	A	GP	Anchorage	200	16 G	12.0		61,416	2,476	0	39,605	103,497	73,483
07-2084	25151	Investigator II	FT	A	GP	Anchorage	200	16 D / E	12.0		57,166	2,305	0	38,144	97,615	69,307
07-4002	9594	Investigator III	FT	A	SS	Juneau	205	18 A / B	12.0		68,226	0	0	42,286	110,512	78,464
07-4003	9595	Investigator II	FT	A	GP	Anchorage	200	16 K	12.0		66,036	2,662	0	41,193	109,891	67,034
07-4004	9596	Administrative Assistant I	FT	A	GP	Anchorage	200	12 B	3.0	**	9,863	398	0	8,013	18,274	18,274
07-4005	9597	Investigator III	FT	A	SS	Fairbanks	203	18 F / J	12.0		79,725	0	0	46,240	125,965	76,839
07-4007	9598	Office Assistant II	FT	A	GP	Fairbanks	203	10 B / C	12.0		35,931	1,449	0	30,843	68,223	41,616
07-4010	9600	Office Assistant II	FT	A	GP	Anchorage	99	10 M	12.0		46,770	1,885	0	34,570	83,225	50,767
07-4012	9601	Investigator II	FT	A	GP	Fairbanks	203	16 A / B	12.0		52,224	2,105	0	36,445	90,774	55,372
07-4013	9602	Investigator II	FT	A	GP	Anchorage	200	16 D / E	12.0		57,166	2,305	0	38,144	97,615	59,545
07-4014	9603	Division Director	FT	A	XE	Anchorage	N00	27 D	3.0	*	28,648	0	0	14,521	43,169	43,169
07-4022	9605	Investigator II	FT	A	GP	Fairbanks	203	16 A / B	12.0		52,224	2,105	0	36,445	90,774	63,542
07-4027	9606	Investigator II	FT	A	GP	Anchorage	200	16 G / J	12.0		61,522	2,480	0	39,642	103,644	72,551
07-4028	9607	Administrative Assistant I	FT	A	GP	Anchorage	200	12 E	0.6	*	2,167	87	0	1,670	3,924	3,924
07-4034	9608	Office Assistant II	FT	A	GP	Anchorage	200	10 B / C	12.0		35,032	1,412	0	30,534	66,978	40,857
07-4514	9617	Wage-Hour Technician	FT	A	GP	Juneau	205	12 C / D	12.0		43,726	1,763	0	33,523	79,012	55,308
07-4529	9626	Investigator II	FT	A	GP	Anchorage	200	16 A / B	12.0		50,706	2,044	0	35,923	88,673	62,071
07-4540	9629	Investigator II	FT	A	GP	Juneau	205	16 B / C	12.0		55,159	2,224	0	37,454	94,837	67,334

Note: If a position is split, an asterisk (\*) will appear in the Split/Count column. If the split position is also counted in the component, two asterisks (\*\*) will appear in this column.  
 [No valid job title] appearing in the Job Class Title indicates that the PCN has an invalid class code or invalid range for the class code effective date of this scenario.

**Personal Services Expenditure Detail (1445)**

Department of Labor and Workforce Development

Scenario: FY2020 Governor Amended (15636)  
 Component: Wage and Hour Administration (345)  
 RDU: Labor Standards and Safety (113)

Status PCN	Tracking ID	Job Class Title	Time Status	Retire Code	Barg Unit	Location	Salary Sched	Range / Steps	Comp Months	Split / Count	Annual Salaries	COLA	Premium Pay	Annual Benefits	Total Costs	UGF Amount
07-4549	9638	Wage-Hour Technician	FT	A	GP	Anchorage	200	12 C / D	12.0		40,712	1,641	0	32,487	74,840	50,891
													<b>Total Salary Costs:</b>	1,220,923		
													<b>Total COLA:</b>	36,851		
													<b>Total Premium Pay:</b>	0		
													<b>Total Benefits:</b>	817,917		
													<b>Total Pre-Vacancy:</b>	2,075,691		
													<b>Minus Vacancy Adjustment of 4.31%:</b>	(89,391)		
													<b>Total Post-Vacancy:</b>	1,986,300		
													<b>Plus Lump Sum Premium Pay:</b>	0		
													<b>Personal Services Line 100:</b>	1,986,300		
<b>Total Component Months:</b>			257.6													

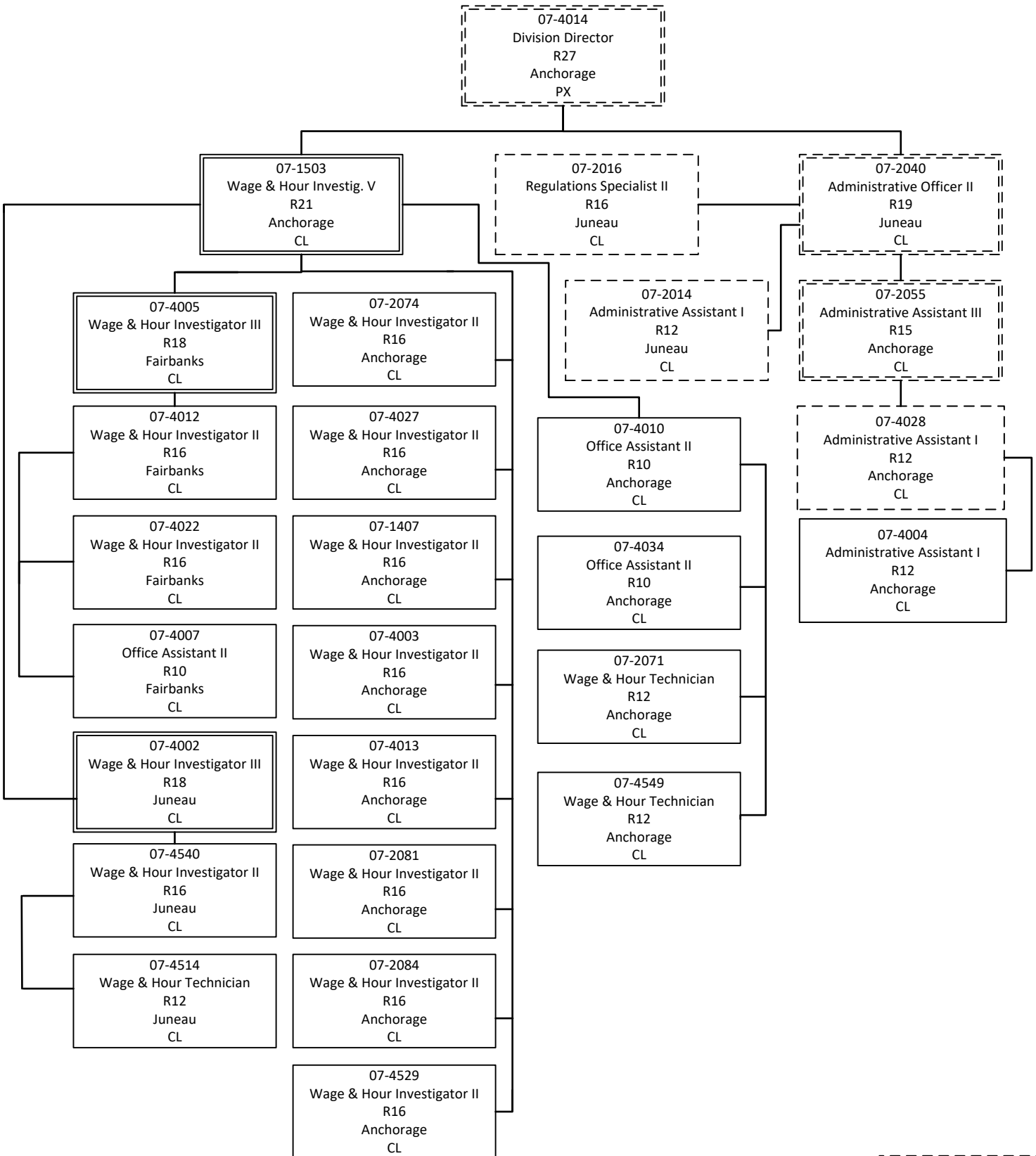
PCN Funding Sources:		Pre-Vacancy	Post-Vacancy	Percent
1004	General Fund Receipts	1,472,698	1,409,275	70.95%
1007	Interagency Receipts	602,993	577,025	29.05%
<b>Total PCN Funding:</b>		<b>2,075,691</b>	<b>1,986,300</b>	<b>100.00%</b>

Note: If a position is split, an asterisk (\*) will appear in the Split/Count column. If the split position is also counted in the component, two asterisks (\*\*) will appear in this column. [No valid job title] appearing in the Job Class Title indicates that the PCN has an invalid class code or invalid range for the class code effective date of this scenario.

# Department of Labor and Workforce Development

## Labor Standards & Safety Division

### Wage & Hour Administration



Indicates split funded position counted in another component