

Component Detail (1077)
Department of Public Safety

Component: Alaska Wildlife Troopers (2746)

Non-Formula Component

RDU: Alaska State Troopers (160)

IRIS AP Type: P300

	FY2018 Actuals (15158)	FY2019 Conference Committee (14954)	FY2019 Authorized (14962)	FY2019 Management Plan (14994)	FY2020 Governor (15610)	FY2020 Governor Amended (15636)	FY2020 Governor vs FY2020 Governor Amended	
1000 Personal Services	16,697.1	17,480.8	17,480.8	16,890.8	19,018.5	16,890.8	-2,127.7	-11.2%
2000 Travel	669.0	419.7	419.7	419.7	430.3	430.3	0.0	0.0%
3000 Services	3,109.8	2,293.2	2,293.2	2,293.2	2,836.0	2,820.8	-15.2	-0.5%
4000 Commodities	341.4	374.9	374.9	374.9	382.9	374.9	-8.0	-2.1%
5000 Capital Outlay	122.8	9.9	9.9	9.9	9.9	9.9	0.0	0.0%
7000 Grants, Benefits	0.0	0.0	0.0	0.0	0.0	0.0	0.0	0.0%
8000 Miscellaneous	0.0	0.0	0.0	0.0	0.0	0.0	0.0	0.0%
Totals	20,940.1	20,578.5	20,578.5	19,988.5	22,677.6	20,526.7	-2,150.9	-9.5%
<u>Funding Sources:</u>								
1004 Gen Fund (UGF)	20,539.7	20,396.5	20,396.5	19,806.5	22,492.0	20,344.7	-2,147.3	-9.5%
1005 GF/Prgm (DGF)	100.0	50.0	50.0	50.0	50.0	50.0	0.0	0.0%
1007 I/A Rcpts (Other)	0.0	21.1	21.1	21.1	21.1	21.1	0.0	0.0%
1061 CIP Rcpts (Other)	300.4	110.9	110.9	110.9	114.5	110.9	-3.6	-3.1%
<u>Funding Totals:</u>								
Unrestricted General (UGF)	20,539.7	20,396.5	20,396.5	19,806.5	22,492.0	20,344.7	-2,147.3	-9.5%
Designated General (DGF)	100.0	50.0	50.0	50.0	50.0	50.0	0.0	0.0%
Other	300.4	132.0	132.0	132.0	135.6	132.0	-3.6	-2.7%
Federal	0.0	0.0	0.0	0.0	0.0	0.0	0.0	0.0%
<u>Positions:</u>								
Permanent Full Time	109	108	108	105	106	105	-1	-0.9%
Permanent Part Time	18	18	18	18	18	18	0	0.0%
Non Permanent	0	0	0	0	0	0	0	0.0%

Change Record Detail - Multiple Scenarios with Descriptions (294)
Department of Public Safety

Component: Alaska Wildlife Troopers (2746)
RDU: Alaska State Troopers (160)

Scenario/Change Record Title	Trans Type	Totals	Personal Services	Travel	Services	Commodities	Capital Outlay	Grants, Benefits	Miscellaneous	Positions		NP
										PFT	PPT	
***** Changes From FY2019 Conference Committee To FY2019 Authorized *****												
FY2019 Conference Committee												
ConfCom		20,578.5	17,480.8	419.7	2,293.2	374.9	9.9	0.0	0.0	108	18	0
1004 Gen Fund		20,396.5										
1005 GF/Prgm		50.0										
1007 I/A Rcpts		21.1										
1061 CIP Rcpts		110.9										
Subtotal		20,578.5	17,480.8	419.7	2,293.2	374.9	9.9	0.0	0.0	108	18	0
***** Changes From FY2019 Authorized To FY2019 Management Plan *****												
Transfer Lieutenant (12-3100) to Alaska Wildlife Troopers Aircraft Section												
Trout		-175.3	-175.3	0.0	0.0	0.0	0.0	0.0	0.0	-1	0	0
1004 Gen Fund		-175.3										
This position oversees the Aircraft Section. This transfer aligns the budget with organizational structure.												
Transfer State Trooper (12-3056) to Alaska Wildlife Troopers Aircraft Section												
Trout		-135.7	-135.7	0.0	0.0	0.0	0.0	0.0	0.0	-1	0	0
1004 Gen Fund		-135.7										
This position is transferred to the Alaska Wildlife Troopers Aircraft Section to enhance operational alignment.												
Transfer Public Safety Technician II (12-1921) to Alaska Wildlife Troopers Marine Enforcement, Reclass to Boat Officer I												
Trout		-104.0	-104.0	0.0	0.0	0.0	0.0	0.0	0.0	-1	0	0
1004 Gen Fund		-104.0										
Current crew staffing is insufficient to safely operate the vessel for marine patrol activities. This has required sending personnel from other areas on temporary duty assignment to provide adequate staffing during patrols.												
This position is reclassified from a Public Safety Technician II to a Boat Officer I and transferred from Dutch Harbor to Juneau.												
Transfer Personal Services Authority to Alaska Wildlife Troopers Marine Enforcement												
Trout		-175.0	-175.0	0.0	0.0	0.0	0.0	0.0	0.0	0	0	0
1004 Gen Fund		-175.0										
Align authority for anticipated fiscal year obligations through reallocation of personal services from Alaska Wildlife Troopers to the Alaska Wildlife Troopers Marine Enforcement Unit. The remaining personal services authority within AWT is expected to be sufficient to cover anticipated expenses.												
Subtotal		19,988.5	16,890.8	419.7	2,293.2	374.9	9.9	0.0	0.0	105	18	0
***** Changes From FY2019 Management Plan To FY2020 Governor Amended *****												

Change Record Detail - Multiple Scenarios with Descriptions (294)
Department of Public Safety

Component: Alaska Wildlife Troopers (2746)
RDU: Alaska State Troopers (160)

Scenario/Change Record Title	Trans Type	Totals	Personal Services	Travel	Services	Commodities	Capital Outlay	Grants, Benefits	Miscellaneous	Positions		
										PFT	PPT	NP
Transfer Funding from Alaska Wildlife Trooper Aircraft to Align Authority for Anticipated Fiscal Year Obligations												
1004 Gen Fund	Trin	538.2	0.0	10.6	527.6	0.0	0.0	0.0	0.0	0	0	0
Totals		20,526.7	16,890.8	430.3	2,820.8	374.9	9.9	0.0	0.0	105	18	0

Transfer budget authority to Alaska Wildlife Troopers to reflect anticipated fiscal year obligations. The remaining authorization in the Aircraft section is sufficient to cover anticipated expenses.

Personal Services Expenditure Detail (1445)

Department of Public Safety

Scenario: FY2020 Governor Amended (15636)
 Component: Alaska Wildlife Troopers (2746)
 RDU: Alaska State Troopers (160)

Status	PCN	Tracking ID	Job Class Title	Time Status	Retire Code	Barg Unit	Location	Salary Sched	Range / Steps	Comp Months	Split / Count	Annual Salaries	COLA	Premium Pay	Annual Benefits	Total Costs	UGF Amount
12-0108		13965	Division Director	FT	A	XE	Anchorage	N00	27 Q / R	12.0		164,028	0	756	78,394	243,178	243,178
12-1087		14015	Major DPS	FT	P	SS	Anchorage	99	26 P / Q	12.0		174,718	0	11,556	85,262	271,536	271,536
12-1239		14093	Lieutenant DPS	FT	P	SS	Anchorage	99	24 N / O	12.0		154,767	0	11,282	78,934	244,983	244,983
12-1847		14422	Administrative Assistant II	FT	A	GP	Anchorage	99	14 O	12.0		66,699	2,832	2,000	44,198	115,729	115,729
12-1898		14449	State Trooper	FT	P	AA	Soldotna	99	77 C / D	12.0		85,407	0	5,612	52,746	143,765	143,765
12-1934		14485	Sergeant DPS	FT	P	AA	Juneau	105	79 N / O	12.0		143,585	0	10,000	74,890	228,475	228,475
12-1935		14486	Administrative Assistant I	FT	A	GP	Kodiak	111	12 L / M	12.0		58,693	2,420	0	40,453	101,566	101,566
12-1937		14488	Public Safety Technician II	FT	A	GP	Seward	100	11 J / K	12.0		46,094	2,106	5,000	37,610	90,810	90,810
12-1938		14489	Public Safety Technician I	PT	A	GP	Petersburg	100	9 C	3.0		8,520	392	1,000	8,185	18,097	
12-1939		14490	Public Safety Technician II	FT	A	GP	Sitka	105	11 B / C	12.0		39,656	1,717	2,000	34,078	77,451	
12-1958		89	State Trooper	FT	P	AA	Wasilla	99	77 C / D	12.0		87,250	0	6,021	53,588	146,859	146,859
12-1961		87	State Trooper	FT	P	AA	Fairbanks	99	77 C / D	12.0		87,939	0	10,421	55,493	153,853	153,853
12-3002		14538	State Trooper	FT	P	AA	Valdez	99	77 P	11.5	**	129,608	0	15,000	71,302	215,910	215,910
12-3003		14539	Lieutenant DPS	FT	P	SS	Soldotna	99	24 O / D	12.0		121,665	0	10,311	68,216	200,192	200,192
12-3007		14543	State Trooper	FT	P	AA	Sitka	99	77 F / J	11.5	**	96,816	0	10,756	58,161	165,733	165,733
12-3008		14544	Office Assistant II	FT	A	GP	Wasilla	100	10 N	12.0		48,504	2,041	1,000	37,015	88,560	88,560
12-3009		14545	Lieutenant DPS	FT	P	SS	Fairbanks	99	24 M / N	12.0		157,064	0	10,311	79,349	246,724	246,724
12-3011		14546	State Trooper	FT	P	AA	Soldotna	99	77 C / D	12.0		87,514	0	5,000	53,305	145,819	145,819
12-3012		14547	State Trooper	FT	P	AA	Hoonah	99	77 R	11.5	**	135,110	0	10,976	71,765	217,851	217,851
12-3013		14548	State Trooper	FT	P	AA	Cordova	99	77 E / F	11.5	**	99,871	0	10,756	59,304	169,931	169,931
12-3019		14551	State Trooper	FT	P	AA	Anchor Point	100	77 N	11.5	**	111,774	0	15,000	65,347	192,121	192,121
12-3020		14552	State Trooper	FT	P	AA	Fairbanks	99	77 L / M	12.0		109,519	0	22,410	68,054	199,983	199,983
12-3022		14553	State Trooper	FT	P	AA	Anchorage	99	77 B / C	12.0		84,099	0	9,859	53,845	147,803	147,803
12-3023		14554	State Trooper	FT	P	AA	Aniak	99	77 O	12.0		176,188	0	18,316	87,693	282,197	282,197
12-3027		14555	Sergeant DPS	FT	P	AA	Wasilla	100	79 M / N	12.0		133,456	0	20,000	74,849	228,305	228,305
12-3028		14556	Sergeant DPS	FT	P	AA	Soldotna	99	79 N / O	12.0		133,459	0	10,000	71,721	215,180	215,180
12-3030		14557	Administrative Assistant I	FT	A	GP	Palmer	100	12 J	12.0		48,744	2,051	1,000	37,105	88,900	88,900
12-3031		14558	Captain DPS	FT	P	SS	Anchorage	99	25 M / N	12.0		163,883	0	10,311	81,482	255,676	255,676
12-3033		14560	Sergeant DPS	FT	P	AA	Juneau	99	79 O	12.0		142,842	0	15,031	76,232	234,105	234,105

Note: If a position is split, an asterisk (*) will appear in the Split/Count column. If the split position is also counted in the component, two asterisks (**) will appear in this column.
 [No valid job title] appearing in the Job Class Title indicates that the PCN has an invalid class code or invalid range for the class code effective date of this scenario.

Personal Services Expenditure Detail (1445)

Department of Public Safety

Scenario: FY2020 Governor Amended (15636)
 Component: Alaska Wildlife Troopers (2746)
 RDU: Alaska State Troopers (160)

Status	PCN	Tracking ID	Job Class Title	Time Status	Retire Code	Barg Unit	Location	Salary Sched	Range / Steps	Comp Months	Split / Count	Annual Salaries	COLA	Premium Pay	Annual Benefits	Total Costs	UGF Amount
12-3035		14562	Sergeant DPS	FT	P	AA	Kodiak	99	79 P	11.5	**	150,167	0	25,000	80,864	256,031	256,031
12-3036		14563	State Trooper	FT	P	AA	Glennallen	99	77 M / N	12.0		122,743	0	22,840	72,386	217,969	217,969
12-3037		14564	Sergeant DPS	FT	P	AA	Fairbanks	99	79 M	12.0		130,238	0	15,000	72,278	217,516	217,516
12-3038		14565	Administrative Assistant I	FT	A	GP	Kodiak	99	12 N	12.0		62,083	2,642	2,000	42,470	109,195	109,195
12-3039		14566	Lieutenant DPS	FT	P	SS	Juneau	99	24 M / N	12.0		159,305	0	15,311	81,614	256,230	256,230
12-3040		14567	State Trooper	FT	P	AA	Wasilla	99	77 C / D	12.0		87,514	0	7,344	54,182	149,040	149,040
12-3043		14569	State Trooper	FT	P	AA	Wasilla	99	77 J / K	12.0		101,089	0	17,064	62,899	181,052	181,052
12-3044		14570	State Trooper	FT	P	AA	Haines	99	77 L	12.0		113,030	0	23,122	69,435	205,587	205,587
12-3045		14571	Sergeant DPS	FT	P	AA	Kodiak	111	79 O	12.0		143,667	0	30,000	81,173	254,840	254,840
12-3046		14572	Sergeant DPS	FT	P	AA	Cordova	99	79 M / N	12.0		145,138	0	10,000	75,376	230,514	230,514
12-3048		14573	State Trooper	FT	P	AA	Dillingham	99	77 K / L	12.0		143,442	0	30,169	81,156	254,767	254,767
12-3050		14575	Administrative Assistant I	FT	A	GP	Juneau	105	12 D / E	12.0		45,336	1,951	2,000	36,203	85,490	85,490
12-3051		14576	Administrative Assistant I	FT	A	GP	Anchorage	100	12 K / L	12.0		51,892	2,181	1,000	38,283	93,356	93,356
12-3061		14579	State Trooper	FT	P	AA	Dutch Harbor	99	77 O / P	12.0		189,917	0	22,556	93,316	305,789	305,789
12-3062		14580	Sergeant DPS	FT	P	AA	King Salmon	99	79 F	12.0		163,675	0	25,000	85,869	274,544	274,544
12-3063		14581	State Trooper	FT	P	AA	Nome	99	77 F / J	12.0		133,259	0	20,963	75,089	229,311	229,311
12-3065		14583	State Trooper	FT	P	AA	Juneau	99	77 J / K	12.0		103,369	0	25,498	66,908	195,775	195,775
12-3066		14584	State Trooper	FT	P	AA	Petersburg	99	77 O	11.9	**	125,187	0	20,756	72,343	218,286	218,286
12-3069		14586	State Trooper	FT	P	AA	Palmer	100	77 P / Q	12.0		131,205	0	12,119	71,679	215,003	215,003
12-3071		14587	Sergeant DPS	FT	P	AA	Ketchikan	99	79 M / N	11.9	**	136,441	0	15,756	74,300	226,497	226,497
12-3073		14588	State Trooper	FT	P	AA	Palmer	99	77 L / M	12.0		108,654	0	17,248	65,799	191,701	191,701
12-3074		14589	Sergeant DPS	FT	P	AA	Soldotna	100	79 O	12.0		141,225	0	15,000	75,716	231,941	231,941
12-3077		14590	Lieutenant DPS	FT	P	SS	Kodiak	99	24 M	12.0		163,966	0	10,311	81,508	255,785	255,785
12-3078		14591	State Trooper	FT	P	AA	Anchorage	99	77 C / D	12.0		87,250	0	4,998	53,205	145,453	145,453
12-3079		14592	State Trooper	FT	P	AA	Craig	99	77 K / L	12.0		111,837	0	17,114	66,940	195,891	195,891
12-3080		14593	State Trooper	FT	P	AA	Anchorage	100	77 L / M	12.0		120,460	0	5,656	65,879	191,995	191,995
12-3082		14594	State Trooper	FT	P	AA	Anchor Point	99	77 D / E	12.0		90,790	0	14,443	58,064	163,297	163,297
12-3083		14595	State Trooper	FT	P	AA	Soldotna	99	77 C / D	12.0		87,514	0	9,659	55,048	152,221	152,221
12-3084		14596	State Trooper Recruit	FT	P	AA	Fairbanks	99	75 D / E	12.0		77,896	0	17,820	54,503	150,219	150,219

Note: If a position is split, an asterisk (*) will appear in the Split/Count column. If the split position is also counted in the component, two asterisks (**) will appear in this column.
 [No valid job title] appearing in the Job Class Title indicates that the PCN has an invalid class code or invalid range for the class code effective date of this scenario.

Personal Services Expenditure Detail (1445)

Department of Public Safety

Scenario: FY2020 Governor Amended (15636)
 Component: Alaska Wildlife Troopers (2746)
 RDU: Alaska State Troopers (160)

Status	PCN	Tracking ID	Job Class Title	Time Status	Retire Code	Barg Unit	Location	Salary Sched	Range / Steps	Comp Months	Split / Count	Annual Salaries	COLA	Premium Pay	Annual Benefits	Total Costs	UGF Amount
12-3086	14598	Captain DPS		FT	P	SS	Anchorage	99	25 Q	12.0		180,419	0	11,438	87,009	278,866	278,866
12-3088	14599	Sergeant DPS		FT	P	AA	Palmer	99	79 L / M	12.0		124,556	0	15,000	70,500	210,056	210,056
12-3091	14601	State Trooper		FT	P	AA	Ketchikan	1EE	77 P	11.9	**	134,753	0	15,000	73,535	223,288	223,288
12-3093	14602	State Trooper		FT	P	AA	Cordova	99	77 N	12.0		125,646	0	17,404	71,593	214,643	214,643
12-3095	14603	State Trooper		FT	P	AA	Kodiak	111	77 O	12.0		135,243	0	27,485	77,751	240,479	240,479
12-3096	14604	Sergeant DPS		FT	P	AA	Bethel	99	79 O	12.0		204,130	0	20,000	96,963	321,093	321,093
12-3099	14605	State Trooper		FT	P	AA	Juneau	99	77 P / Q	12.0		129,303	0	17,409	72,739	219,451	219,451
12-3103	14608	Public Safety Technician II		FT	A	GP	Soldotna	100	11 G	12.0		43,728	2,009	5,000	36,724	87,461	87,461
12-3104	14609	Mech Auto Adv Journey		FT	A	LL	Palmer	1BB	53 B / C	12.0		52,974	0	0	38,209	91,183	91,183
12-3105	14610	Public Safety Technician II		FT	A	GP	Ketchikan	100	11 E / F	12.0		42,211	2,152	10,000	38,028	92,391	92,391
12-3106	14611	Administrative Assistant I		FT	A	GP	Fairbanks	103	12 G	12.0		48,168	2,027	1,000	36,889	88,084	88,084
12-3109	14613	State Trooper		FT	P	AA	Kodiak	99	77 M / N	12.0		123,186	0	22,530	72,428	218,144	218,144
12-3116	14616	Public Safety Technician II		FT	A	GP	Kodiak	111	11 G	12.0		48,540	2,125	3,000	37,777	91,442	91,442
12-3119	14617	State Trooper		FT	P	AA	Anchorage	100	77 R	12.0		141,229	0	5,666	72,796	219,691	219,691
12-3120	14618	State Trooper		FT	P	AA	Mcgrath	99	77 P	12.0		166,965	0	45,711	93,379	306,055	306,055
12-3121	14619	State Trooper		FT	P	AA	Delta Junction	99	77 K / L	12.0		120,417	0	16,798	69,768	206,983	206,983
12-3123	14620	State Trooper		FT	P	AA	Soldotna	100	77 N / O	12.0		120,968	0	11,450	68,237	200,655	200,655
12-3124	14621	State Trooper		FT	P	AA	Sitka	105	77 M	11.9	**	117,844	0	15,756	68,481	202,081	202,081
12-3127	14622	State Trooper		FT	P	AA	Soldotna	99	77 D / E	12.0		88,606	0	6,299	54,200	149,105	149,105
12-3129	14623	State Trooper		FT	P	AA	King Salmon	99	77 K / L	12.0		153,953	0	25,019	82,833	261,805	261,805
12-3130	14624	State Trooper		FT	P	AA	Kodiak	99	77 L / M	12.0		118,190	0	22,930	70,990	212,110	212,110
12-3135	14627	State Trooper Recruit		FT	P	AA	Palmer	99	75 C / D	12.0		75,530	0	11,505	51,255	138,290	138,290
12-3136	14628	Sergeant DPS		FT	P	AA	Anchorage	99	79 O	12.0		136,121	0	3,000	70,364	209,485	209,485
12-3137	14629	Sergeant DPS		FT	P	AA	Fairbanks	99	79 L	12.0		125,530	0	15,000	70,805	211,335	211,335
12-3138	14630	State Trooper		FT	P	AA	Bethel	99	77 N	12.0		169,816	0	17,622	85,482	272,920	272,920
12-3143	14632	State Trooper		FT	P	AA	Kotzebue	99	77 F / J	12.0		156,296	0	27,845	84,451	268,592	268,592
12-3145	14633	State Trooper		FT	P	AA	Coldfoot Camp	99	77 C / D	12.0		116,977	0	15,662	68,320	200,959	200,959
12-3146	14634	State Trooper		FT	P	AA	Ketchikan	99	77 O	11.9	**	125,187	0	15,756	70,778	211,721	211,721
12-3147	14635	State Trooper		FT	P	AA	Tok	99	77 K / L	12.0		120,781	0	10,982	67,992	199,755	199,755

Note: If a position is split, an asterisk (*) will appear in the Split/Count column. If the split position is also counted in the component, two asterisks (**) will appear in this column.
 [No valid job title] appearing in the Job Class Title indicates that the PCN has an invalid class code or invalid range for the class code effective date of this scenario.

Personal Services Expenditure Detail (1445)

Department of Public Safety

Scenario: FY2020 Governor Amended (15636)
 Component: Alaska Wildlife Troopers (2746)
 RDU: Alaska State Troopers (160)

Status	PCN	Tracking ID	Job Class Title	Time Status	Retire Code	Barg Unit	Location	Salary Sched	Range / Steps	Comp Months	Split / Count	Annual Salaries	COLA	Premium Pay	Annual Benefits	Total Costs	UGF Amount
12-3148	14636	State Trooper	FT	P	AA	Fairbanks	99	77 L	12.0			108,334	0	17,769	65,874	191,977	191,977
12-3149	14637	State Trooper	FT	P	AA	Glennallen	99	77 K / L	12.0			114,208	0	13,299	66,399	193,906	193,906
12-3150	14638	State Trooper Recruit	FT	P	AA	Anchorage	99	75 D / E	12.0			76,476	0	11,454	51,590	139,520	139,520
12-3151	14639	State Trooper	FT	P	AA	Anchorage	99	77 C / D	12.0			87,514	0	5,851	53,623	146,988	146,988
12-3164	14646	State Trooper	FT	P	AA	Kodiak	99	77 Q	12.0			140,313	0	11,047	74,194	225,554	225,554
12-3165	14647	State Trooper	FT	P	AA	Seward	99	77 K	11.9	**		100,549	0	15,000	61,769	177,318	177,318
12-3802	14655	Public Safety Technician I	PT	A	GP	Haines	100	9 B	3.0			8,286	383	1,000	8,097	17,766	17,766
12-3805	14657	State Trooper	FT	P	AA	Kodiak	99	77 C / D	12.0			96,819	0	17,266	61,377	175,462	175,462
12-3809	14660	Administrative Assistant II	FT	A	GP	Anchorage	100	14 A / B	12.0			44,460	1,915	2,000	35,876	84,251	84,251
12-3813	14662	Administrative Assistant II	FT	A	GP	Soldotna	100	14 O / P	12.0			66,015	2,804	2,000	43,942	114,761	114,761
12-3819	14665	Public Safety Technician I	PT	A	GP	Girdwood	100	9 B	4.0			11,048	497	1,000	10,672	23,217	23,217
12-3820	14666	Public Safety Technician I	PT	A	GP	Valdez	111	9 B / C	4.0			12,522	599	2,000	11,598	26,719	26,719
12-3821	14667	Public Safety Technician I	PT	A	GP	Cordova	111	9 B	3.0			9,198	462	2,000	8,813	20,473	20,473
12-3831	14671	Public Safety Technician I	PT	A	GP	Soldotna	100	9 B	3.0			8,286	383	1,000	8,097	17,766	17,766
12-3835	14673	Public Safety Technician II	FT	A	GP	Cordova	111	11 G	12.0			48,540	2,207	5,000	38,525	94,272	94,272
12-3837	14674	Public Safety Technician I	PT	A	GP	King Salmon	150	9 C	3.0			12,780	609	2,000	10,153	25,542	25,542
12-3839	14675	State Trooper	FT	P	AA	Cantwell	99	77 M	12.0			125,504	0	17,847	71,688	215,039	215,039
12-3840	14676	Public Safety Technician I	PT	A	GP	Kodiak	111	9 C	3.0			9,456	472	2,000	8,909	20,837	20,837
12-3842	14677	Public Safety Technician I	PT	A	GP	King Salmon	150	9 B	3.0			12,429	595	2,000	10,022	25,046	25,046
12-3844	14678	State Trooper	FT	P	AA	Juneau	99	77 F / J	11.9	**		99,266	0	15,756	61,572	176,594	176,594
12-3846	14679	Public Safety Technician I	PT	A	GP	Anchor Point	100	9 C	3.0			8,520	434	2,000	8,559	19,513	19,513
12-3851	14681	Public Safety Technician I	PT	A	GP	Wrangell	100	9 B	4.0			11,048	497	1,000	10,672	23,217	23,217
12-3856	14683	Public Safety Technician I	PT	A	GP	Craig	100	9 C	3.0			8,520	434	2,000	8,559	19,513	19,513
12-3857	14684	Public Safety Technician I	PT	A	GP	Fairbanks	103	9 B	3.0			8,535	434	2,000	8,565	19,534	19,534
12-3858	14685	Public Safety Technician I	PT	A	GP	Dillingham	137	9 C	4.0			15,564	807	4,000	13,484	33,855	33,855
12-3859	14686	Public Safety Technician II	FT	A	GP	Fairbanks	103	11 G	12.0			45,036	2,186	8,000	38,336	93,558	93,558
12-3860	14687	State Trooper	FT	P	AA	Palmer	99	77 C / D	12.0			85,407	0	11,896	55,097	152,400	152,400
12-3862	14689	Public Safety Technician I	FT	A	GP	Juneau	105	9 B / C	12.0			35,538	1,506	1,000	32,163	70,207	70,207
12-3863	14690	Public Safety Technician I	PT	A	GP	Palmer	100	9 B	4.0			11,048	538	2,000	11,046	24,632	24,632

Note: If a position is split, an asterisk (*) will appear in the Split/Count column. If the split position is also counted in the component, two asterisks (**) will appear in this column.
 [No valid job title] appearing in the Job Class Title indicates that the PCN has an invalid class code or invalid range for the class code effective date of this scenario.

Personal Services Expenditure Detail (1445)

Department of Public Safety

Scenario: FY2020 Governor Amended (15636)

Component: Alaska Wildlife Troopers (2746)

RDU: Alaska State Troopers (160)

Status	PCN	Tracking ID	Job Class Title	Time Status	Retire Code	Barg Unit	Location	Salary Sched	Range / Steps	Comp Months	Split / Count	Annual Salaries	COLA	Premium Pay	Annual Benefits	Total Costs	UGF Amount
12-3864		14691	Public Safety Technician I	PT	A	GP	Delta Junction	100	9 B	4.0		11,048	538	2,000	11,046	24,632	24,632
12-3865		14692	Public Safety Technician I	PT	A	GP	Juneau	105	9 B	4.0		11,600	519	1,000	10,878	23,997	23,997
12-3866		14693	Public Safety Technician I	PT	A	GP	Anchorage	100	9 D	4.0		11,720	524	1,000	10,923	24,167	24,167
12-3868		14695	State Trooper	FT	P	AA	Wasilla	100	77 P	12.0		126,463	0	11,890	70,124	208,477	208,477
12-3869		14696	State Trooper	FT	P	AA	Craig	1EE	77 M	11.9	**	116,297	0	10,000	65,791	192,088	192,088
12-3872		14697	State Trooper	FT	P	AA	Anchorage	99	77 J	12.0		97,730	0	11,605	59,599	168,934	168,934
12-3873		30499	State Trooper	FT	P	AA	Wrangell	99	77 E / F	11.9	**	98,402	0	10,000	59,095	167,497	167,497

	Total Positions	New	Deleted
Full Time Positions:	105	0	0
Part Time Positions:	18	0	0
Non Permanent Positions:	0	0	0
Positions in Component:	123	0	0

Total Component Months: 1318.1

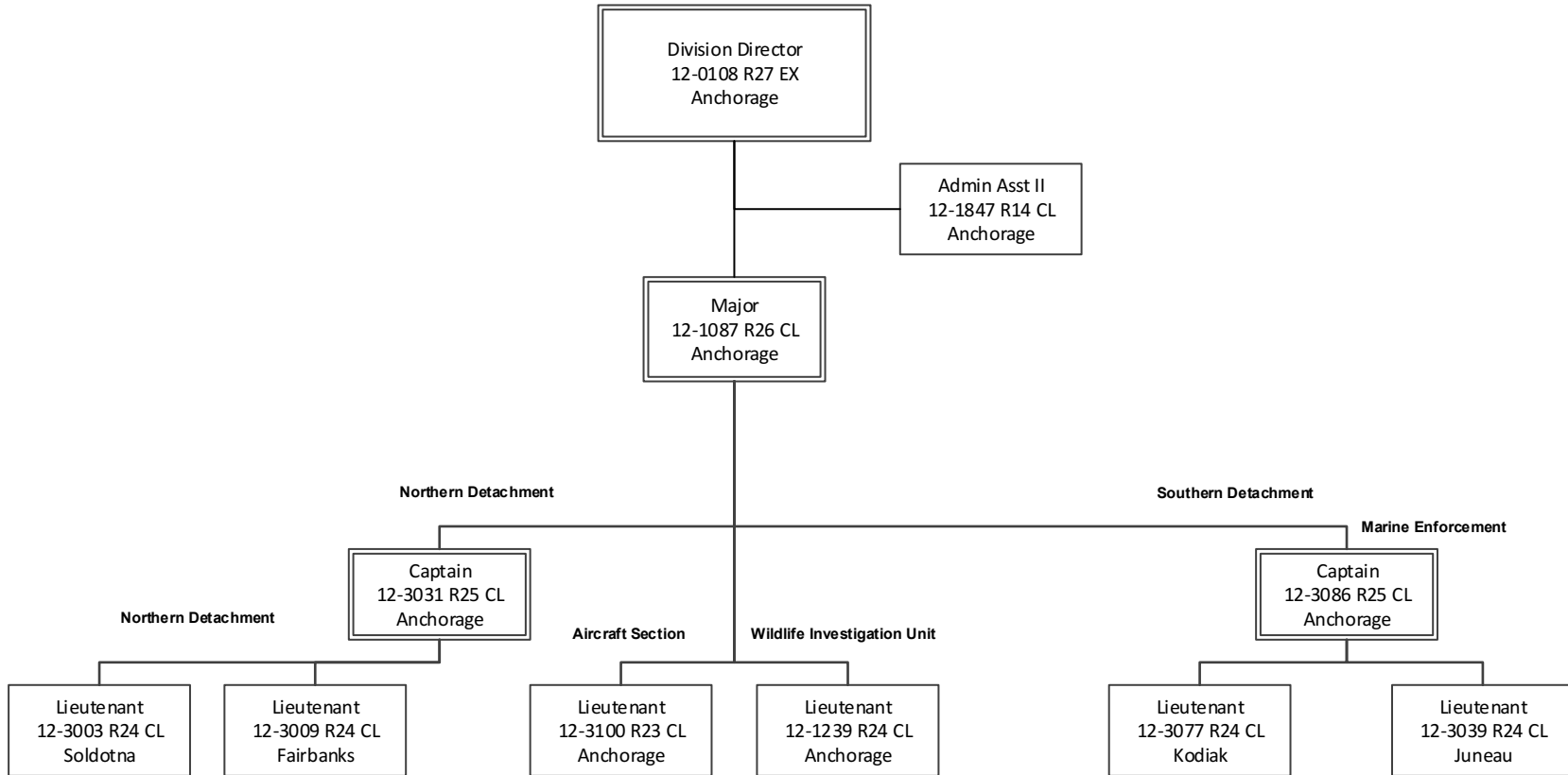
Total Salary Costs:	11,867,507
Total COLA:	47,989
Total Premium Pay:	1,378,379
Total Benefits:	6,920,064
Total Pre-Vacancy:	20,213,939
Minus Vacancy Adjustment of 6.30%:	(1,272,839)
Total Post-Vacancy:	18,941,100
Plus Lump Sum Premium Pay:	0
Personal Services Line 100:	18,941,100

PCN Funding Sources:	Pre-Vacancy	Post-Vacancy	Percent
1004 General Fund Receipts	20,118,391	18,851,569	99.53%
1061 Capital Improvement Project Receipts	95,548	89,531	0.47%
Total PCN Funding:	20,213,939	18,941,100	100.00%

Note: If a position is split, an asterisk (*) will appear in the Split/Count column. If the split position is also counted in the component, two asterisks (**) will appear in this column. [No valid job title] appearing in the Job Class Title indicates that the PCN has an invalid class code or invalid range for the class code effective date of this scenario.

Component: Alaska Wildlife Troopers (2746)
RDU: Alaska State Troopers (160)

AWT DIVISION OPERATIONS
ORGANIZATIONAL CHART

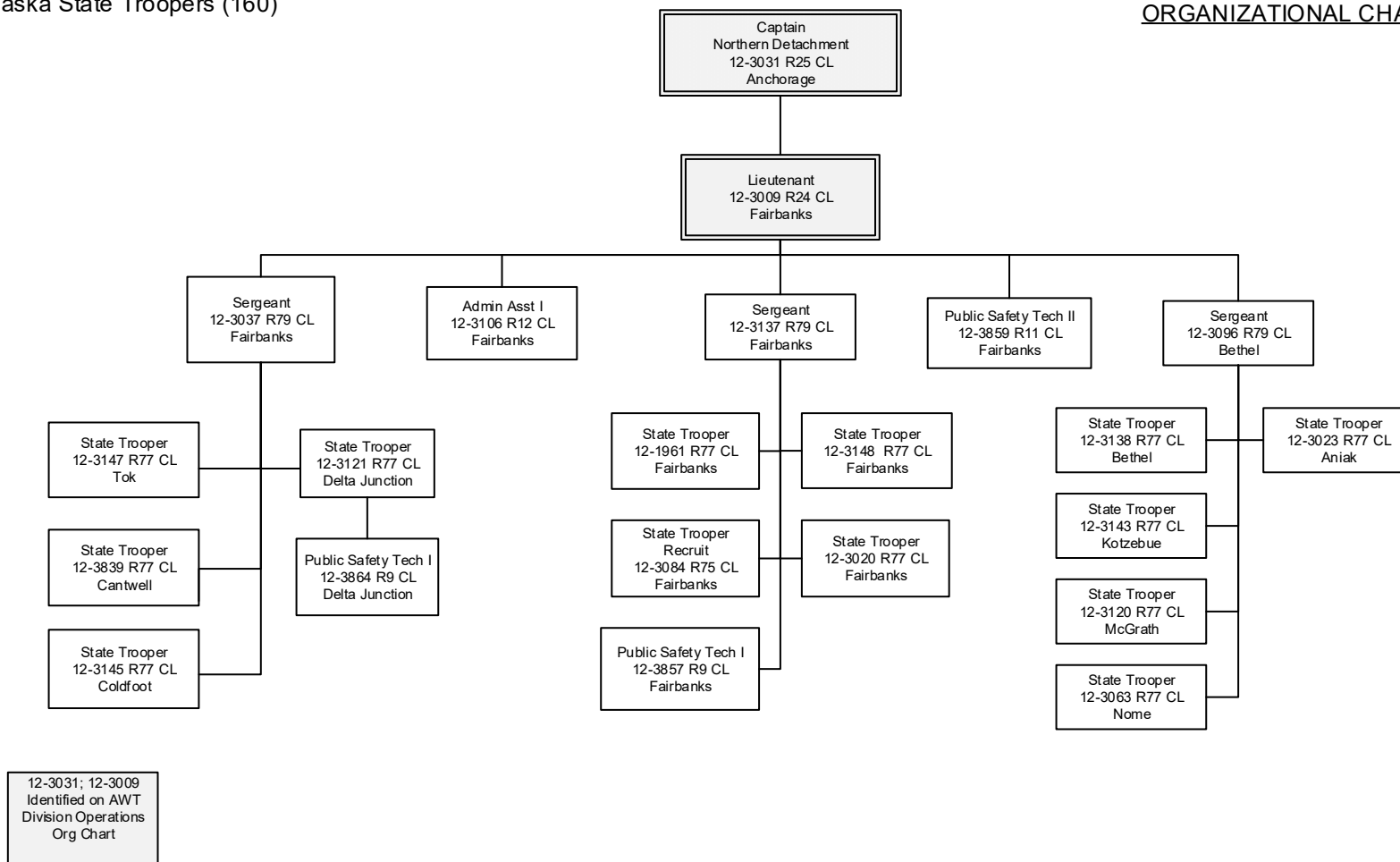


State of Alaska
Department of Public Safety

12-1087;12-3031;12-3086; 12-3003; 12-3009; 12-3100; 12-1239; 12-3077; 12-3039 Also appear on section charts

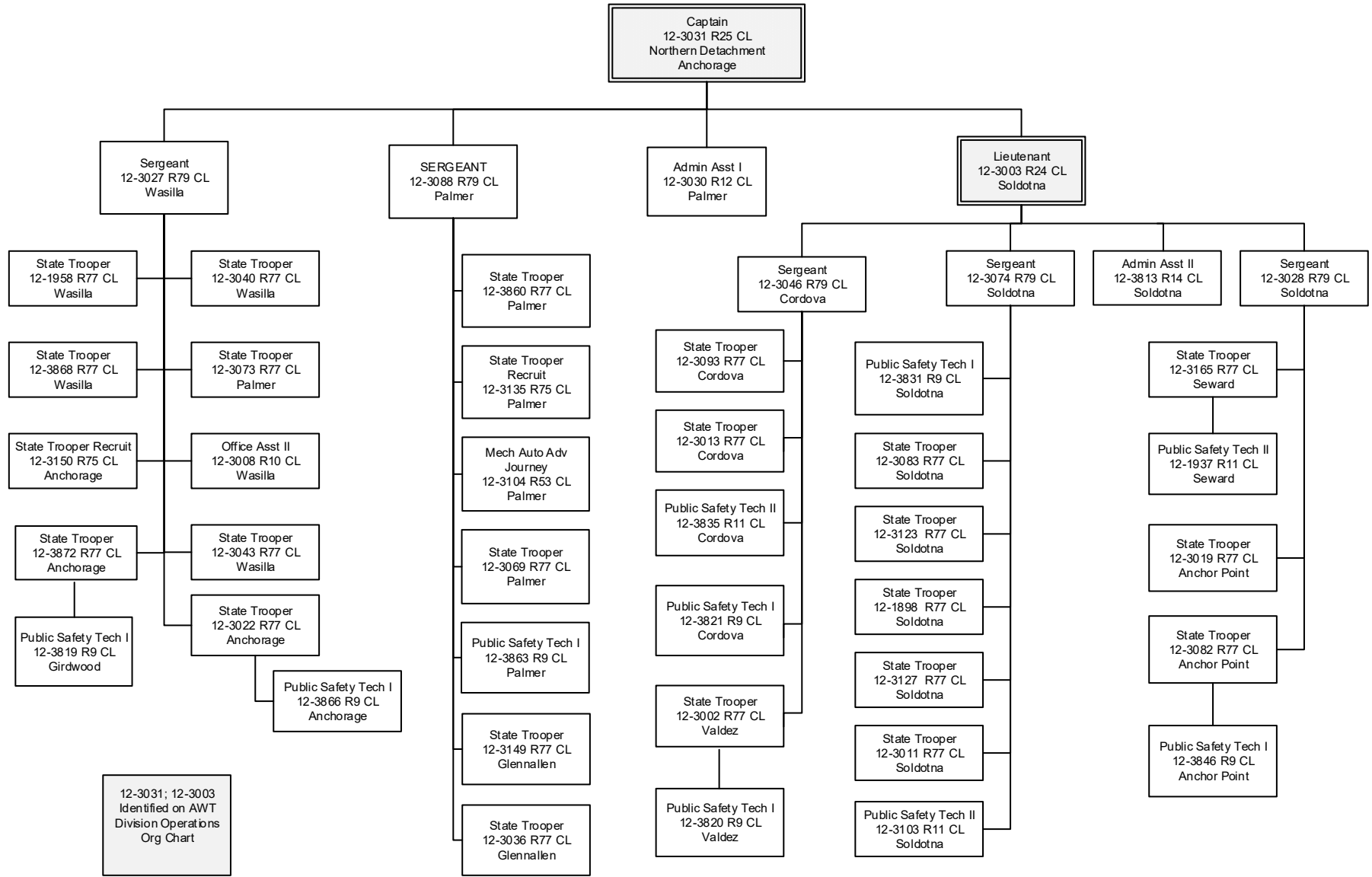
Component - Alaska Wildlife Troopers (2746)
 RDU: Alaska State Troopers (160)

NORTHERN DETACHMENT- Fairbanks
ORGANIZATIONAL CHART



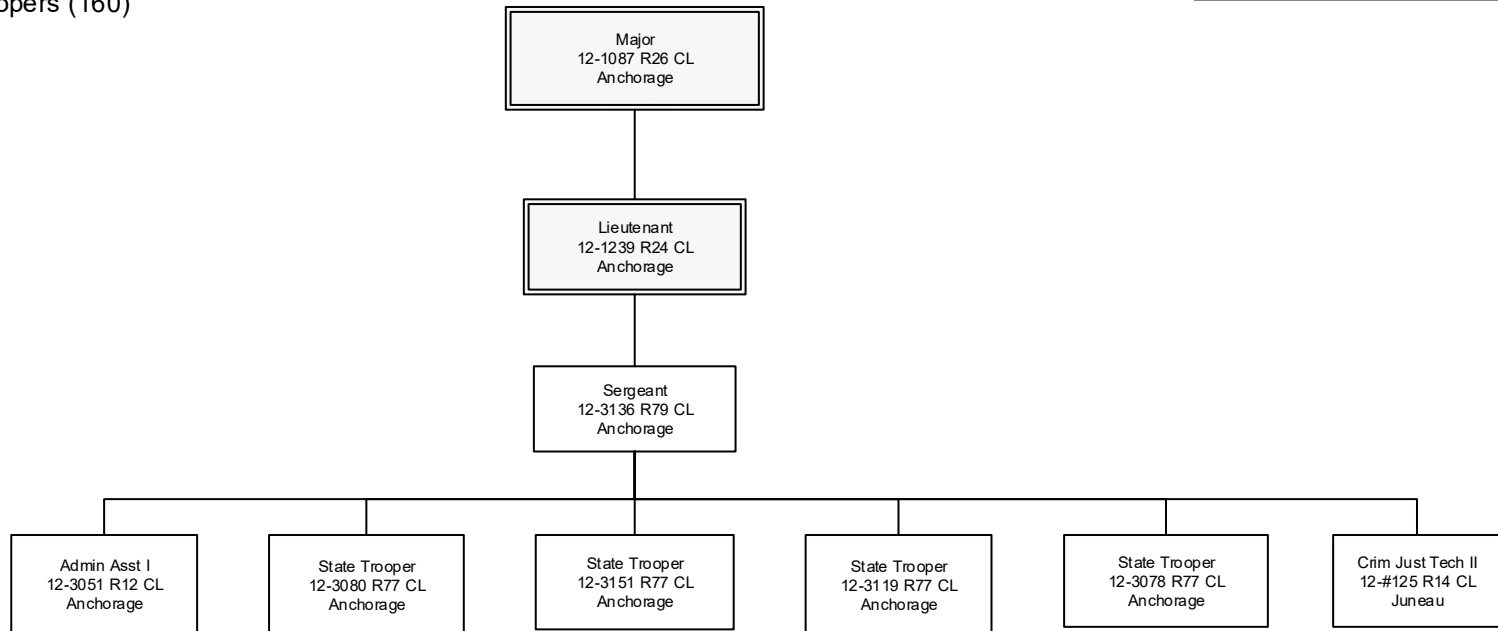
Component - Alaska Wildlife Troopers (2746)
 RDU: Alaska State Troopers (160)

NORTHERN DETACHMENT- Palmer
ORGANIZATIONAL CHART



Component - Alaska Wildlife Troopers (2746)
RDU: Alaska State Troopers (160)

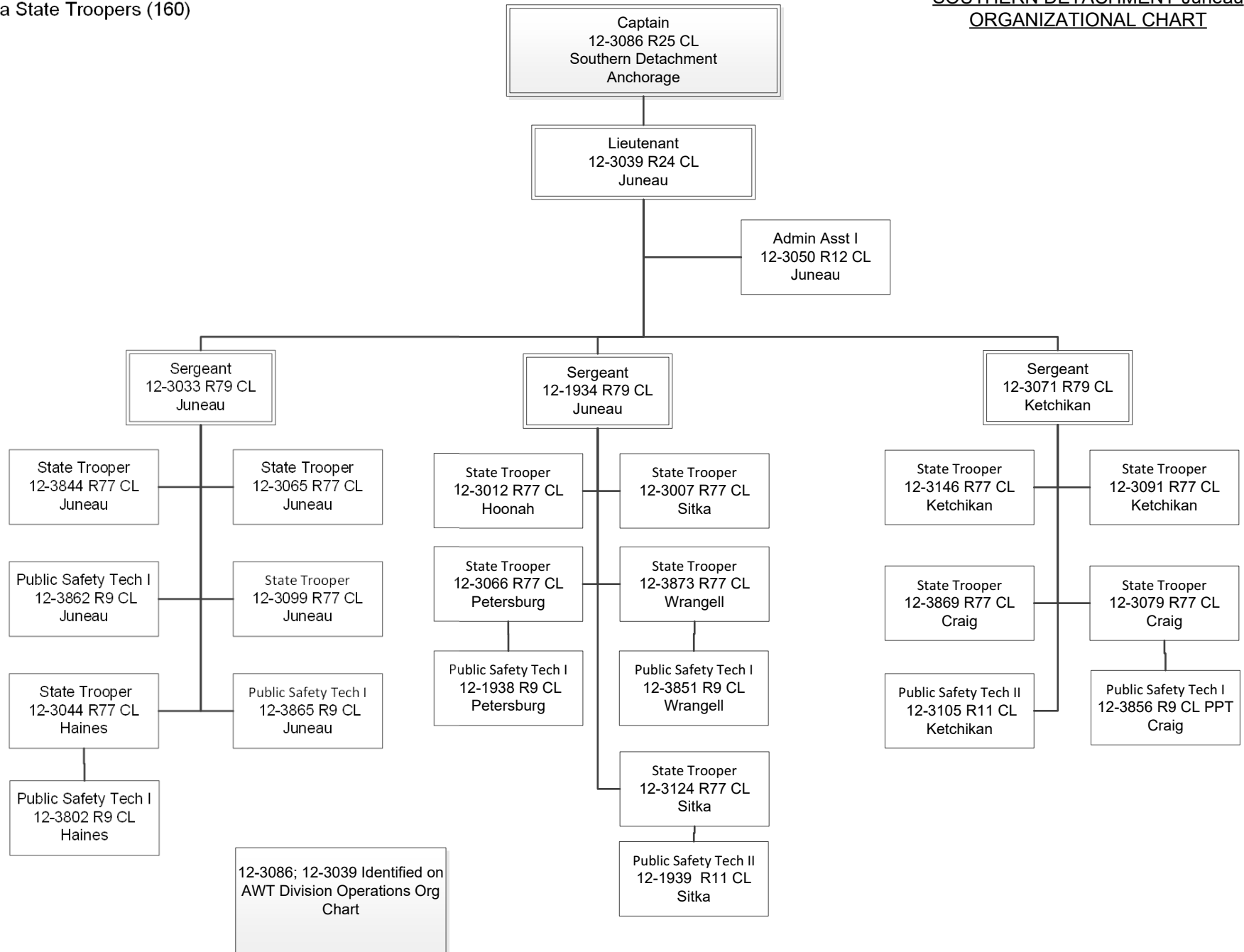
WILDLIFE INVESTIGATIONS UNIT
ORGANIZATIONAL CHART



12-1087; 12-1239
Identified on AWT
Division Operations
Org Chart

Component: Alaska Wildlife Troopers (2746)
 RDU: Alaska State Troopers (160)

SOUTHERN DETACHMENT-Juneau
ORGANIZATIONAL CHART



Component - Alaska Wildlife Troopers (2746)
 RDU: Alaska State Troopers (160)

SOUTHERN DETACHMENT-Kodiak
ORGANIZATIONAL CHART

