

Component Detail (1077)
Department of Transportation/Public Facilities

Component: Northern Region Highways and Aviation (2068)

Non-Formula Component

RDU: Highways, Aviation and Facilities (408)

IRIS AP Type: T08G

	FY2018 Actuals (15158)	FY2019 Conference Committee (14954)	FY2019 Authorized (14962)	FY2019 Management Plan (14994)	FY2020 Governor (15610)	FY2020 Governor Amended (15636)	FY2020 Governor vs FY2020 Governor Amended	
1000 Personal Services	33,241.1	32,376.5	32,376.5	32,930.2	33,979.8	33,300.2	-679.6	-2.0%
2000 Travel	682.4	700.0	700.0	700.0	700.0	374.2	-325.8	-46.5%
3000 Services	16,918.1	18,896.1	18,896.1	18,996.1	19,013.2	18,980.6	-32.6	-0.2%
4000 Commodities	11,572.3	10,185.6	10,185.6	10,248.7	10,248.7	10,248.7	0.0	0.0%
5000 Capital Outlay	1,515.0	0.0	0.0	0.0	0.0	0.0	0.0	0.0%
7000 Grants, Benefits	0.0	0.0	0.0	0.0	0.0	0.0	0.0	0.0%
8000 Miscellaneous	0.0	0.0	0.0	0.0	0.0	0.0	0.0	0.0%
Totals	63,928.9	62,158.2	62,158.2	62,875.0	63,941.7	62,903.7	-1,038.0	-1.6%
<u>Funding Sources:</u>								
1002 Fed Rcpts (Fed)	19.2	322.4	322.4	322.4	122.4	122.4	0.0	0.0%
1004 Gen Fund (UGF)	31,758.9	32,007.2	32,007.2	32,724.0	33,769.7	34,827.1	1,057.4	3.1%
1005 GF/Prgm (DGF)	406.9	346.0	346.0	346.0	401.1	395.9	-5.2	-1.3%
1007 I/A Rcpts (Other)	102.8	149.9	149.9	149.9	151.7	149.3	-2.4	-1.6%
1061 CIP Rcpts (Other)	10,792.1	6,626.2	6,626.2	6,626.2	7,296.8	7,128.8	-168.0	-2.3%
1108 Stat Desig (Other)	46.3	274.2	274.2	274.2	63.4	59.2	-4.2	-6.6%
1200 VehRntlTax (DGF)	498.0	498.1	498.1	498.1	500.5	155.8	-344.7	-68.9%
1239 AvFuel Tax (Other)	2,397.4	2,432.5	2,432.5	2,432.5	2,444.4	2,406.0	-38.4	-1.6%
1244 Rural Air (Other)	1,461.4	2,353.2	2,353.2	2,353.2	2,287.5	1,171.1	-1,116.4	-48.8%
1249 Motor Fuel (DGF)	16,445.9	17,148.5	17,148.5	17,148.5	16,904.2	16,488.1	-416.1	-2.5%
<u>Funding Totals:</u>								
Unrestricted General (UGF)	31,758.9	32,007.2	32,007.2	32,724.0	33,769.7	34,827.1	1,057.4	3.1%
Designated General (DGF)	17,350.8	17,992.6	17,992.6	17,992.6	17,805.8	17,039.8	-766.0	-4.3%
Other	14,800.0	11,836.0	11,836.0	11,836.0	12,243.8	10,914.4	-1,329.4	-10.9%
Federal	19.2	322.4	322.4	322.4	122.4	122.4	0.0	0.0%
<u>Positions:</u>								
Permanent Full Time	244	247	247	248	248	248	0	0.0%
Permanent Part Time	56	54	54	53	53	53	0	0.0%
Non Permanent	20	20	20	20	20	20	0	0.0%

Change Record Detail - Multiple Scenarios with Descriptions (294)
Department of Transportation/Public Facilities

Component: Northern Region Highways and Aviation (2068)
RDU: Highways, Aviation and Facilities (408)

Scenario/Change Record Title	Trans Type	Totals	Personal Services	Travel	Services	Commodities	Capital Outlay	Grants, Benefits	Miscellaneous	PFT	Positions PPT	NP
***** Changes From FY2019 Conference Committee To FY2019 Authorized *****												
FY2019 Conference Committee												
	ConfCom	62,158.2	32,376.5	700.0	18,896.1	10,185.6	0.0	0.0	0.0	247	54	20
1002 Fed Rcpts		322.4										
1004 Gen Fund		32,007.2										
1005 GF/Prgm		346.0										
1007 I/A Rcpts		149.9										
1061 CIP Rcpts		6,626.2										
1108 Stat Desig		274.2										
1200 VehRntlTax		498.1										
1239 AvFuel Tax		2,432.5										
1244 Rural Air		2,353.2										
1249 Motor Fuel		17,148.5										
Subtotal		62,158.2	32,376.5	700.0	18,896.1	10,185.6	0.0	0.0	0.0	247	54	20
***** Changes From FY2019 Authorized To FY2019 Management Plan *****												
Transfer from Central Region Highways & Aviation to Mitigate Impact of Prior Year Reductions												
	Trin	453.7	453.7	0.0	0.0	0.0	0.0	0.0	0.0	0	0	0
1004 Gen Fund		453.7										
Transfer authority to Northern Region Highways and Aviation to mitigate the impact of multiple prior year budget reductions.												
Funding is available to transfer due to efficiencies gained by divesting specialized equipment that is available for rent, and from region specific optional cost savings efforts such as lighting curfews, facility energy efficiencies, etc.												
This transfer allows the department to optimize available funding.												
Transfer from Southcoast Region Highways & Aviation to Mitigate Impact of Prior Year Reductions												
	Trin	263.1	100.0	0.0	100.0	63.1	0.0	0.0	0.0	0	0	0
1004 Gen Fund		263.1										
Transfer authority to Northern Region Highways and Aviation to mitigate the impact of multiple prior year budget reductions.												
Funding is available to transfer due to efficiencies gained by divesting specialized equipment that is available for rent, and from region specific optional cost savings efforts such as lighting curfews, facility energy efficiencies, etc.												
This transfer allows the department to optimize available funding.												
Time Status Change Information System Coordinator (25-1910) from Part-time to Full-time to Support Integrated System												
	PosAdj	0.0	0.0	0.0	0.0	0.0	0.0	0.0	0.0	1	-1	0
Time status change for Information System Coordinator (25-1910) from part-time to full-time to provide support for the upgrade of the existing maintenance,												

Change Record Detail - Multiple Scenarios with Descriptions (294)
Department of Transportation/Public Facilities

Component: Northern Region Highways and Aviation (2068)
RDU: Highways, Aviation and Facilities (408)

Scenario/Change Record Title	Trans Type	Totals	Personal Services	Travel	Services	Commodities	Capital Outlay	Grants, Benefits	Miscellaneous	Positions		
										PFT	PPT	NP
equipment, and pavement management systems, allowing the three systems to be integrated. The position serves as the primary point of contact, liaison, and subject matter expert for the Northern Region.												
	Subtotal	62,875.0	32,930.2	700.0	18,996.1	10,248.7	0.0	0.0	0.0	248	53	20
***** Changes From FY2019 Management Plan To FY2020 Governor Amended *****												
Transfer to Fairbanks Airport Safety for Safety Training												
	Trout	-15.0	0.0	0.0	-15.0	0.0	0.0	0.0	0.0	0	0	0
	1108 Stat Desig	-15.0										
Transfer statutory designated program receipt authority to the Fairbanks Airport Safety component for payment from non-state agencies to attend training conducted by Fairbanks Airport Safety. Receipt authority will allow the component to offset services and commodity costs associated with the training.												
Training consists of courses that the Safety component already conducts for its own staff, including: first aid, automated external defibrillator, cardiopulmonary resuscitation, firefighter I and II, emergency trauma technician, emergency vehicle operator course, and law enforcement defensive tactics.												
Transfer Authority to Southcoast Region Highways & Aviation to Fund Sand Point Airport Operations												
	Trout	-70.0	0.0	0.0	-70.0	0.0	0.0	0.0	0.0	0	0	0
	1244 Rural Air	-70.0										
During FY2019, the department obtained FAA Part 139 certification for the Sand Point Airport. In order to fund the operations and maintenance as a certificated airport, it was necessary to implement landing fees. The transfer of rural airport receipts will allow the component to receive and expend the revenue collected from landing fees.												
Authority is available to transfer from Northern Region Highways and Aviation due to reduced collections of rural airport receipts at the Deadhorse Airport.												
Transfer from Northern Region Facilities to Fund Personal Services												
	Trin	520.0	520.0	0.0	0.0	0.0	0.0	0.0	0.0	0	0	0
	1061 CIP Rcpts	520.0										
Transfer capital improvement project receipt authority from the Northern Region Facilities component to the Northern Region Highways and Aviation component to be utilized for personal services charges to capital projects. Authority is available to transfer due to regional facilities staff transferring to the Division of Facilities Services and being funded by inter-agency receipt authority.												
Airport Maintenance Contracts and Insurance												
	Inc	302.1	0.0	0.0	302.1	0.0	0.0	0.0	0.0	0	0	0
	1004 Gen Fund	302.1										
The department has unstaffed rural airports whose maintenance and operations are provided via contracts. Work consists of routine summer and winter maintenance of the airport facilities, which includes Department of Transportation and Public Facilities owned maintenance equipment, building structures, and roadways located on airport property. Work areas include all state runways, taxiways, aprons, safety areas, state access roads, lighting systems, segmented circles, wind cones, and state buildings at the airports.												

Change Record Detail - Multiple Scenarios with Descriptions (294)
Department of Transportation/Public Facilities

Component: Northern Region Highways and Aviation (2068)
RDU: Highways, Aviation and Facilities (408)

Scenario/Change Record Title	Trans Type	Totals	Personal Services	Travel	Services	Commodities	Capital Outlay	Grants, Benefits	Miscellaneous	Positions		
										PFT	PPT	NP

The department has experienced a steady increase in rural airport maintenance costs and cannot absorb the increase without reducing service levels elsewhere in the affected region.

FY2020 Projected Cost \$2,656.4
 FY2020 Budget \$2,354.3
 Shortfall \$302.1

Replace Airport Leasing Receipts with Unrestricted General Fund to Avoid Potential Revenue Shortfall in Budget

	FndChg	Totals	Personal Services	Travel	Services	Commodities	Capital Outlay	Grants, Benefits	Miscellaneous	PFT	PPT	NP
1004 Gen Fund	1,097.1	0.0	0.0	0.0	0.0	0.0	0.0	0.0	0.0	0	0	0
1244 Rural Air	-1,097.1											

Rural Airport Receipt (fund 1244) Authority is \$8,546.8 versus Projected Revenue of \$6,561.3. Revenue Shortfall is estimated to be \$(1,985.5).

This is split between:
 Central Region Highways and Aviation: \$(547.9)
 Northern Region Highways and Aviation: \$(1097.1)
 Southcoast Region Highways and Aviation: \$(340.5)

Replace Designated Program Receipts with General Fund/Program receipts for Collections Due to Damaged Infrastructure

	FndChg	Totals	Personal Services	Travel	Services	Commodities	Capital Outlay	Grants, Benefits	Miscellaneous	PFT	PPT	NP
1005 GF/Prgm	50.0	0.0	0.0	0.0	0.0	0.0	0.0	0.0	0.0	0	0	0
1108 Stat Desig	-50.0											

A fund source swap from statutory designated program receipts to general fund/program receipts will allow the component to utilize revenues collected for damaged infrastructure (damaged light poles, etc).

Statutory designated program receipts are no longer realizable due to a lack of contractual agreements from non-state and non-federal entities.

Delete Statutory Designated Program Receipt Authority no Longer Needed for Contractual Agreements

	Dec	Totals	Personal Services	Travel	Services	Commodities	Capital Outlay	Grants, Benefits	Miscellaneous	PFT	PPT	NP
1108 Stat Desig	-150.0	-150.0	-150.0	0.0	0.0	0.0	0.0	0.0	0.0	0	0	0

Statutory designated program receipts are no longer needed due to a lack of contractual agreements from non-state and non-federal entities.

Delete Federal Receipts no Longer Needed for Law Enforcement Officers

	Dec	Totals	Personal Services	Travel	Services	Commodities	Capital Outlay	Grants, Benefits	Miscellaneous	PFT	PPT	NP
1002 Fed Rcpts	-200.0	-200.0	0.0	0.0	-200.0	0.0	0.0	0.0	0.0	0	0	0

Federal receipts are no longer needed due to the reduction in funding from the Transportation Security Administration for law enforcement officers at rural airports.

Change Record Detail - Multiple Scenarios with Descriptions (294)
Department of Transportation/Public Facilities

Component: Northern Region Highways and Aviation (2068)

RDU: Highways, Aviation and Facilities (408)

Scenario/Change Record Title	Trans Type	Totals	Personal Services	Travel	Services	Commodities	Capital Outlay	Grants, Benefits	Miscellaneous	Positions		NP
										PFT	PPT	
Reduce Cost of Rural Airport Maintenance												
1004 Gen Fund	Dec	-17.0	0.0	0.0	-17.0	0.0	0.0	0.0	0.0	0	0	0
Reduce the cost of rural airport maintenance through divestiture or airport reclassification to backcountry. Ownership and/or management responsibility for some rural airports may be transferred to another entity.												
Replace Motor Fuel and Aviation Fuel Tax with Unrestricted General Fund to Avoid Potential Revenue Shortfall in Budget												
1004 Gen Fund	FndChg	677.2	0.0	0.0	0.0	0.0	0.0	0.0	0.0	0	0	0
1239 AvFuel Tax		-16.8										
1249 Motor Fuel		-660.4										
Fund Source Swap to UGF if Aviation Fuel Tax Collections and/or Motor Fuel Tax Collections are estimated to be insufficient.												
Based on both aviation and motor fuel tax projections from Department of Revenue on 01/24/2019, an overall shortfall of funds is expected.												
Aviation Fuel Tax (fund 1239) projections are \$4,743.0. DOT&PF FY2020 projected need is \$4,775.8. Shortfall estimate is \$(32.8). This is split between: Central Region Highways and Aviation: \$(10.3) Northern Region Highways and Aviation: \$(16.8) Southcoast Region Highways and Aviation: \$(5.7)												
Motor Fuel Tax (fund 1249) projections are \$35,761.0. DOT&PF FY2020 projected is \$36,993.1. Shortfall estimate is \$(1232.1). This is split between: Central Region Highways and Aviation: \$(340.1) Northern Region Highways and Aviation: \$(660.4) Southcoast Region Highways and Aviation: \$(231.6)												
Executive Branch 50% Travel Reduction												
1004 Gen Fund	Dec	-341.4	0.0	-325.8	-15.6	0.0	0.0	0.0	0.0	0	0	0
1005 GF/Prgm		-0.1										
1007 I/A Rcpts		-0.6										
1061 CIP Rcpts		-17.4										
1239 AvFuel Tax		-9.7										
1244 Rural Air		-15.0										
50% executive branch travel reduction based on actual costs of travel in FY2018. Exceptions were made to travel essential to public safety, health, and disaster management.												
Replace a Portion of the Vehicle Rental Taxes With Undesignated General Funds to Avoid a Potential Revenue Shortfall												
	FndChg	0.0	0.0	0.0	0.0	0.0	0.0	0.0	0.0	0	0	0

Change Record Detail - Multiple Scenarios with Descriptions (294)
Department of Transportation/Public Facilities

Component: Northern Region Highways and Aviation (2068)

RDU: Highways, Aviation and Facilities (408)

Scenario/Change Record Title	Trans Type	Totals	Personal Services	Travel	Services	Commodities	Capital Outlay	Grants, Benefits	Miscellaneous	Positions		
										PFT	PPT	NP
1004 Gen Fund		342.3										
1200 VehRntlTax		-342.3										
Replace a portion of the vehicle rental taxes with undesignated general funds to avoid a potential revenue shortfall.												
Totals		62,903.7	33,300.2	374.2	18,980.6	10,248.7	0.0	0.0	0.0	248	53	20

Personal Services Expenditure Detail (1445)

Department of Transportation/Public Facilities

Scenario: FY2020 Governor Amended (15636)
 Component: Northern Region Highways and Aviation (2068)
 RDU: Highways, Aviation and Facilities (408)

Status PCN	Tracking ID	Job Class Title	Time Status	Retire Code	Barg Unit	Location	Salary Sched	Range / Steps	Comp Months	Split / Count	Annual Salaries	COLA	Premium Pay	Annual Benefits	Total Costs	UGF Amount
25-0163	18754	Engineer/Architect I	FT	A	GP	Fairbanks	203	22 D / E	12.0		87,000	3,841	6,583	52,938	150,362	
25-1170	19507	Rural Airport Foreman	FT	A	LL	Cordova	2EE	49 O	12.0		94,684	0	13,659	58,267	166,610	107,730
25-1171	19508	Equip Operator Journey II	PT	A	LL	Thompson Pass	2FF	53 C	8.0		38,334	0	4,147	27,895	70,376	17,756
25-1173	19510	Equip Operator Journey II	FT	A	LL	Cordova	2EE	53 O / P	12.0		79,151	0	11,058	51,592	141,801	113,441
25-1175	19512	Equip Operator Jrny III/Lead	FT	A	LL	Cordova	2EE	52 B / C	12.0		59,269	0	8,412	43,300	110,981	88,785
25-1176	19513	Equip Operator Jrny III/Lead	FT	A	LL	Cordova	2EE	52 N / O	12.0		79,451	0	11,394	51,826	142,671	104,449
25-1178	19515	Equipment Operator Foreman I	FT	A	LL	Saint Marys	2II	51 J / K	12.0		77,330	0	11,016	50,906	139,252	62,441
25-1181	19517	Equip Operator Journey II	FT	A	LL	Saint Marys	2II	53 J	12.0		68,377	0	9,864	47,187	125,428	100,342
25-1241	19560	Accounting Tech III	FT	A	GP	Fairbanks	203	16 D / E	12.0		58,965	2,600	4,381	41,808	107,754	107,754
25-1458	19747	Equip Operator Journey II	FT	A	LL	Fairbanks	2EE	53 N / O	12.0		74,580	0	10,680	49,770	135,030	67,515
25-1468	19755	Eng Tech Journey	FT	A	LL	Fairbanks	2EE	54 L / M	12.0		66,861	0	4,692	44,725	116,278	
25-1472	19758	Equip Operator Journey II	FT	A	LL	Saint Marys	2II	53 D / E	11.5		60,267	0	8,988	43,113	112,368	95,513
25-1476	19761	Engineering Associate	FT	A	GP	Fairbanks	203	21 L	12.0		98,196	4,340	7,554	57,417	167,507	
25-1562	19823	Equip Operator Journey I	FT	A	LL	Fairbanks	2EE	54 B / C	12.0		52,330	0	7,449	40,391	100,170	26,024
25-1574	19832	Environ Program Spec III	FT	A	GP	Fairbanks	203	18 K / L	12.0		79,521	3,264	0	47,762	130,547	
25-1583	19839	Maint Spec Etrician Journey II	FT	A	LL	Fairbanks	2EE	51 K / L	12.0		76,120	0	10,821	50,389	137,330	96,131
25-1613	19854	Equip Operator Journey II	FT	A	LL	Valdez	2FF	53 F	12.0		63,241	0	9,123	45,023	117,387	64,563
25-1670	19892	Equip Operator Journey II	FT	A	LL	Fairbanks	2EE	53 M / N	12.0		73,928	0	10,314	49,396	133,638	20,046
25-1671	19893	Equip Operator Jrny III/Lead	FT	A	LL	Nome	2II	52 L	12.0		77,590	0	11,193	51,067	139,850	97,433
25-1681	19900	Equip Operator Journey I	FT	A	LL	Fairbanks	2EE	54 C / D	12.0		54,019	0	7,689	41,101	102,809	61,685
25-1706	19916	Equip Operator Sub Journey I	PT	A	LL	Cantwell	2HH	58 A / B	5.0		18,550	0	3,127	15,640	37,317	
25-1734	19933	Environ Impact Analyst III	FT	A	GP	Fairbanks	203	19 K	12.0		83,088	3,410	0	49,075	135,573	
25-1783	19962	Office Assistant III	FT	A	GP	Nome	237	11 D / E	12.0		54,575	2,240	0	38,579	95,394	95,394
25-1788	19967	Engineering Assistant II	FT	A	GG	Fairbanks	203	19 L / M	12.0		86,825	3,834	6,598	52,879	150,136	
25-1831	19992	Equip Operator Sub Journey I	PT	A	LL	Tazlina	2FF	58 E	5.0		19,566	0	5,080	16,733	41,379	
25-1901	20019	Maint & Operations Super	FT	A	SS	Tok	200	21 L / M	12.0		101,706	0	0	56,268	157,974	110,582
25-1902	20020	Maint & Operations Super	FT	A	SS	Fairbanks	203	21 K	12.0		101,316	0	0	56,125	157,441	110,209
25-1903	20021	Maint & Operations Super	FT	A	SS	Fairbanks	203	21 P / Q	12.0		126,878	0	0	65,534	192,412	134,688
25-1904	20022	Admin Asst III	FT	A	GP	Tok	200	15 C / D	12.0		50,784	2,163	1,914	37,888	92,749	78,558

Note: If a position is split, an asterisk (*) will appear in the Split/Count column. If the split position is also counted in the component, two asterisks (**) will appear in this column.
 [No valid job title] appearing in the Job Class Title indicates that the PCN has an invalid class code or invalid range for the class code effective date of this scenario.

Personal Services Expenditure Detail (1445)

Department of Transportation/Public Facilities

Scenario: FY2020 Governor Amended (15636)
Component: Northern Region Highways and Aviation (2068)
RDU: Highways, Aviation and Facilities (408)

Status	PCN	Tracking ID	Job Class Title	Time Status	Retire Code	Barg Unit	Location	Salary Sched	Range / Steps	Comp Months	Split / Count	Annual Salaries	COLA	Premium Pay	Annual Benefits	Total Costs	UGF Amount
25-1905		20023	Admin Asst III	FT	A	GP	Fairbanks	203	15 B / C	12.0		50,154	2,137	1,903	37,653	91,847	78,070
25-1907		20024	Office Assistant III	FT	A	GP	Cordova	211	11 K / L	12.0		51,790	2,207	1,989	38,286	94,272	94,272
25-1908		20025	Equipment Operator Foreman I	FT	A	LL	Galena	2JJ	51 O / P	12.0		91,836	0	13,155	57,033	162,024	81,012
25-1909		20026	Equip Operator Journey II	FT	A	LL	Galena	2JJ	53 P	12.0		84,286	0	12,159	53,888	150,333	135,300
25-1910		20027	Information System Coordinator	FT	A	GP	Fairbanks	203	18 A / B	12.0		60,362	2,571	2,271	41,546	106,750	85,400
25-1911		20028	Equip Operator Journey II	FT	A	LL	Trimms Camp	2FF	53 C / D	12.0		57,732	0	8,295	42,691	108,718	59,795
25-1914		20031	Engineer/Architect IV	FT	A	SS	Fairbanks	203	26 L	12.0		142,644	0	0	70,740	213,384	213,384
25-1915		20032	Equipment Operator Foreman I	FT	A	LL	Fairbanks	2EE	51 K / L	12.0		77,008	0	10,821	50,716	138,545	76,200
25-1916		20033	Maint Spec Tces Jrny II	FT	A	LL	Fairbanks	2EE	51 E / F	12.0		69,494	0	9,771	47,564	126,829	69,756
25-1917		20034	Equip Operator Journey II	FT	A	LL	Fairbanks	2EE	53 L	12.0		69,064	0	9,963	47,476	126,503	69,577
25-1918		20035	Equip Operator Journey I	FT	A	LL	Fairbanks	2EE	54 D / E	12.0		56,517	0	7,938	42,112	106,567	58,612
25-1919		20036	Equipment Operator Foreman II	FT	A	LL	Fairbanks	2EE	50 L	12.0		81,520	0	11,760	52,723	146,003	80,302
25-1920		20037	Equipment Operator Foreman I	FT	A	LL	Fairbanks	2EE	51 L / M	12.0		79,517	0	11,205	51,781	142,503	71,252
25-1921		20038	Equip Operator Journey II	FT	A	LL	Cantwell	2HH	53 F / J	12.0		66,581	0	9,408	46,358	122,347	67,291
25-1924		20040	Equip Operator Journey II	FT	A	LL	Fairbanks	2EE	53 C / D	12.0		56,755	0	8,154	42,279	107,188	58,953
25-1926		20041	Equip Operator Journey II	FT	A	LL	Fairbanks	2EE	53 F / J	12.0		63,810	0	8,982	45,181	117,973	64,885
25-1927		20042	Equipment Operator Foreman I	FT	A	LL	Fairbanks	2EE	51 K / L	12.0		75,122	0	10,821	50,022	135,965	47,588
25-1928		20043	Equip Operator Journey I	FT	A	LL	Fairbanks	2EE	54 B / C	12.0		51,775	0	7,449	40,187	99,411	84,499
25-1929		20044	Equipment Operator Foreman I	FT	A	LL	Fairbanks	2EE	51 L	12.0		77,673	0	11,205	51,102	139,980	76,989
25-1930		20045	Equip Operator Journey II	FT	A	LL	Fairbanks	2EE	53 L / M	12.0		71,091	0	9,963	48,222	129,276	71,102
25-1931		20046	Equip Operator Journey II	FT	A	LL	Fairbanks	2EE	53 K / L	12.0		67,595	0	9,624	46,811	124,030	62,015
25-1932		20047	Equipment Operator Foreman I	FT	A	LL	Fairbanks	2EE	51 N	12.0		83,309	0	12,018	53,476	148,803	59,521
25-1933		20048	Equip Operator Journey I	FT	A	LL	Fairbanks	2EE	54 F	12.0		58,666	0	8,463	43,096	110,225	60,624
25-1934		20049	Equip Operator Journey II	FT	A	LL	Montana Creek	2EE	53 M	12.0		71,497	0	10,314	48,501	130,312	71,672
25-1935		20050	Equip Operator Journey II	FT	A	LL	Fairbanks	2EE	53 E / F	12.0		61,769	0	8,697	44,325	114,791	57,396
25-1936		20051	Equip Operator Journey II	FT	A	LL	Fairbanks	2EE	53 K / L	12.0		67,203	0	9,624	46,666	123,493	67,921
25-1937		20052	Equip Operator Journey II	FT	A	LL	Fairbanks	2EE	53 D / E	12.0		59,889	0	8,421	43,531	111,841	61,513
25-1938		20053	Equip Operator Journey I	PT	A	LL	Delta Junction	2FF	54 C	6.0		27,139	0	3,915	20,624	51,678	31,007
25-1939		20054	Equip Operator Journey II	FT	A	LL	Paxson	2FF	53 D / E	12.0		61,026	0	8,562	44,002	113,590	68,154

Note: If a position is split, an asterisk (*) will appear in the Split/Count column. If the split position is also counted in the component, two asterisks (**) will appear in this column.
 [No valid job title] appearing in the Job Class Title indicates that the PCN has an invalid class code or invalid range for the class code effective date of this scenario.

Personal Services Expenditure Detail (1445)

Department of Transportation/Public Facilities

Scenario: FY2020 Governor Amended (15636)
Component: Northern Region Highways and Aviation (2068)
RDU: Highways, Aviation and Facilities (408)

Status PCN	Tracking ID	Job Class Title	Time Status	Retire Code	Barg Unit	Location	Salary Sched	Range / Steps	Comp Months	Split / Count	Annual Salaries	COLA	Premium Pay	Annual Benefits	Total Costs	UGF Amount
25-1940	20055	Equip Operator Sub Journey I	PT	A	LL	Fairbanks	2EE	58 C / D	8.0		29,622	0	3,117	24,309	57,048	
25-1941	20056	Equip Operator Journey II	FT	A	LL	Fairbanks	2EE	53 O	12.0		76,654	0	11,058	50,673	138,385	76,112
25-1942	20057	Equip Operator Journey I	PT	A	LL	Nenana	2HH	54 L / M	11.0		63,766	0	4,905	42,132	110,803	66,482
25-1943	20058	Equip Operator Journey II	FT	A	LL	Fairbanks	2EE	53 O	12.0		76,654	0	11,058	50,673	138,385	76,112
25-1944	20059	Equip Operator Journey I	FT	A	LL	Fairbanks	2EE	54 C / D	12.0		53,516	0	7,689	40,916	102,121	56,167
25-1946	20061	Equip Operator Journey I	FT	A	LL	Fairbanks	2EE	54 B / C	12.0		52,330	0	7,449	40,391	100,170	60,102
25-1947	20062	Equipment Operator Foreman I	FT	A	LL	Delta Junction	2FF	51 M / N	12.0		84,047	0	11,745	53,647	149,439	74,720
25-1948	20063	Equip Operator Journey II	FT	A	LL	Delta Junction	2FF	53 J	12.0		65,424	0	9,438	45,943	120,805	72,483
25-1949	20064	Equip Operator Journey II	FT	A	LL	Delta Junction	2FF	53 F	12.0		63,241	0	9,123	45,023	117,387	58,694
25-1950	20065	Equip Operator Journey II	FT	A	LL	Delta Junction	2FF	53 N	12.0		75,011	0	10,821	49,981	135,813	81,488
25-1951	20066	Equip Operator Journey II	FT	A	LL	Delta Junction	2FF	53 P	12.0		80,356	0	11,592	52,232	144,180	86,508
25-1952	20067	Equipment Operator Foreman I	FT	A	LL	Cantwell	2HH	51 N	12.0		86,262	0	12,444	54,720	153,426	
25-1954	20069	Admin Asst III	FT	A	GP	Fairbanks	203	15 A / B	12.0		48,822	2,079	1,835	37,137	89,873	71,898
25-1955	20070	Equip Operator Journey II	FT	A	LL	Nenana	2HH	53 B / C	12.0		57,763	0	8,322	42,712	108,797	54,399
25-1957	20072	Equipment Operator Foreman I	FT	A	LL	Tok	2FF	51 L	12.0		78,650	0	11,346	51,514	141,510	70,755
25-1958	20073	Equip Operator Journey II	FT	A	LL	Tok	2FF	53 L / M	12.0		70,649	0	10,104	48,111	128,864	77,318
25-1959	20074	Equip Operator Journey II	PT	A	LL	Tok	2FF	53 B / C	6.0		28,378	0	4,018	21,118	53,514	32,108
25-1960	20075	Equip Operator Journey II	FT	A	LL	Manley Hot Spring	2HH	53 A / B	12.0		57,041	0	8,073	42,355	107,469	64,481
25-1961	20076	Equip Operator Journey I	PT	A	LL	Healy	2HH	54 A / B	5.0		22,475	0	3,820	17,340	43,635	
25-1962	20077	Equip Operator Journey II	FT	A	LL	Tok	2FF	53 C / D	12.0		58,812	0	8,295	43,088	110,195	66,117
25-1964	20078	Equip Operator Journey II	FT	A	LL	Montana Creek	2EE	53 B / C	12.0		54,884	0	7,896	41,496	104,276	57,352
25-1965	20079	Equip Operator Jrny III/Lead	FT	A	LL	Deadhorse	2JJ	52 O / P	12.0		86,820	0	12,507	54,949	154,276	123,421
25-1966	20080	Equip Operator Journey I	PT	A	LL	Tok	2FF	54 B / C	11.5		51,461	0	3,795	37,960	93,216	55,930
25-1967	20081	Equip Operator Sub Journey II	PT	A	LL	Delta Junction	2FF	56 B / C	11.5		45,759	0	3,406	35,718	84,883	
25-1968	20082	Maint Spec Tces Jrny II	FT	A	LL	Fairbanks	2EE	51 D / E	12.0		67,102	0	9,459	46,568	123,129	
25-1969	20083	Equip Operator Journey II	FT	A	LL	Manley Hot Spring	2HH	53 M	12.0		74,450	0	10,740	49,745	134,935	80,961
25-1971	20085	Equip Operator Journey II	FT	A	LL	Manley Hot Spring	2HH	53 B / C	12.0		58,657	0	8,322	43,041	110,020	
25-1973	20086	Equip Operator Journey I	PT	A	LL	Fairbanks	2EE	54 A / B	7.0		30,054	0	3,607	23,116	56,777	
25-1975	20087	Equip Operator Journey II	FT	A	LL	Delta Junction	2FF	53 N	12.0		75,011	0	10,821	49,981	135,813	

Note: If a position is split, an asterisk (*) will appear in the Split/Count column. If the split position is also counted in the component, two asterisks (**) will appear in this column.
 [No valid job title] appearing in the Job Class Title indicates that the PCN has an invalid class code or invalid range for the class code effective date of this scenario.

Personal Services Expenditure Detail (1445)

Department of Transportation/Public Facilities

Scenario: FY2020 Governor Amended (15636)
 Component: Northern Region Highways and Aviation (2068)
 RDU: Highways, Aviation and Facilities (408)

Status	PCN	Tracking ID	Job Class Title	Time Status	Retire Code	Barg Unit	Location	Salary Sched	Range / Steps	Comp Months	Split / Count	Annual Salaries	COLA	Premium Pay	Annual Benefits	Total Costs	UGF Amount
25-1977	20088	Equip Operator	Journey II	FT	A	LL	Tok	2FF	53 M / N	12.0		74,165	0	10,455	49,535	134,155	
25-1978	20089	Equip Operator	Journey I	PT	A	LL	South Fork	2FF	54 B	8.0		35,076	0	3,795	26,566	65,437	39,262
25-1979	20090	Equip Operator	Journey II	FT	A	LL	Fairbanks	2EE	53 O	12.0		76,654	0	11,058	50,673	138,385	76,112
25-1980	20091	Equip Operator	Jrny III/Lead	FT	A	LL	Livengood	2HH	52 N	12.0		81,936	0	11,820	52,898	146,654	
25-1981	20092	Equip Operator	Journey II	FT	A	LL	Livengood	2HH	53 P	12.0		82,331	0	11,877	53,064	147,272	
25-1982	20093	Equip Operator	Jrny III/Lead	FT	A	LL	Manley Hot Spring	2HH	52 K / L	12.0		76,508	0	10,689	50,484	137,681	
25-1983	20094	Equip Operator	Jrny III/Lead	PT	A	LL	South Fork	2FF	52 A / B	8.0		38,764	0	4,144	28,052	70,960	
25-1985	20096	Equip Operator	Journey II	FT	A	LL	Livengood	2HH	53 N / O	12.0		78,734	0	11,106	51,456	141,296	
25-1986	20097	Equip Operator	Journey II	FT	A	LL	Fairbanks	2EE	53 L	12.0		69,064	0	9,963	47,476	126,503	
25-1989	20100	Equip Operator	Journey II	FT	A	LL	Fairbanks	2EE	53 J / K	12.0		65,958	0	9,297	46,088	121,343	
25-1990	20101	Equip Operator	Jrny III/Lead	FT	A	LL	Nenana	2HH	52 K / L	12.0		74,306	0	10,689	49,673	134,668	
25-1991	20102	Equip Operator	Journey II	FT	A	LL	Cantwell	2HH	53 L / M	12.0		74,247	0	10,389	49,541	134,177	
25-1992	20103	Equip Operator	Journey II	FT	A	LL	Tok	2FF	53 M / N	12.0		72,897	0	10,455	49,068	132,420	
25-1993	20104	Equip Operator	Journey II	FT	A	LL	Nenana	2HH	53 J	12.0		67,400	0	9,723	46,775	123,898	
25-1994	20105	Equip Operator	Sub Journey II	PT	A	LL	Tok	2FF	56 A / B	11.5		45,081	0	3,303	35,430	83,814	
25-1995	20106	Equip Operator	Jrny III/Lead	FT	A	LL	Healy	2HH	52 N / O	12.0		82,170	0	11,820	52,984	146,974	88,184
25-1996	20107	Equip Operator	Journey I	FT	A	LL	Fairbanks	2EE	54 F	12.0		58,666	0	8,463	43,096	110,225	
25-1997	20108	Equip Operator	Journey II	FT	A	LL	Healy	2HH	53 J	12.0		67,400	0	9,723	46,775	123,898	
25-1998	20109	Equip Operator	Journey II	PT	A	LL	Healy	2HH	53 C / D	6.0		29,970	0	4,290	21,804	56,064	
25-1999	20110	Equip Operator	Journey II	FT	A	LL	Cantwell	2HH	53 B / C	12.0		58,806	0	8,322	43,096	110,224	
25-2000	20111	Equip Operator	Journey II	FT	A	LL	Cantwell	2HH	53 F / J	12.0		65,398	0	9,408	45,922	120,728	
25-2001	20112	Equip Operator	Journey II	FT	A	LL	Cantwell	2HH	53 J	12.0		67,400	0	9,723	46,775	123,898	74,339
25-2002	20113	Equip Operator	Jrny III/Lead	FT	A	LL	Northway	2FF	52 N	12.0		79,961	0	11,535	52,066	143,562	93,315
25-2003	20114	Equip Operator	Journey II	PT	A	LL	Northway	2FF	53 B	6.0		27,856	0	4,018	20,926	52,800	
25-2005	20116	Equip Operator	Journey II	FT	A	LL	Northway	2FF	53 M / N	12.0		72,580	0	10,455	48,951	131,986	79,192
25-2006	20117	Maint Spec	Etrician Journey II	FT	A	LL	Barrow	2JJ	51 B / C	12.0		68,230	0	9,576	47,027	124,833	49,933
25-2008	20118	Equip Operator	Journey II	FT	A	LL	Livengood	2HH	53 D / E	12.0		61,567	0	8,847	44,306	114,720	68,832
25-2009	20119	Equip Operator	Journey I	PT	A	LL	South Fork	2FF	54 B	7.0		30,691	0	3,795	23,420	57,906	
25-2010	20120	Equip Operator	Journey II	PT	A	LL	South Fork	2FF	53 E	7.0		35,738	0	4,419	25,507	65,664	

Note: If a position is split, an asterisk (*) will appear in the Split/Count column. If the split position is also counted in the component, two asterisks (**) will appear in this column.
 [No valid job title] appearing in the Job Class Title indicates that the PCN has an invalid class code or invalid range for the class code effective date of this scenario.

Personal Services Expenditure Detail (1445)

Department of Transportation/Public Facilities

Scenario: FY2020 Governor Amended (15636)
Component: Northern Region Highways and Aviation (2068)
RDU: Highways, Aviation and Facilities (408)

Status	PCN	Tracking ID	Job Class Title	Time Status	Retire Code	Barg Unit	Location	Salary Sched	Range / Steps	Comp Months	Split / Count	Annual Salaries	COLA	Premium Pay	Annual Benefits	Total Costs	UGF Amount
25-2011		20121	Equip Operator Journey II	PT	A	LL	South Fork	2FF	53 A / A	7.0		31,492	0	3,894	23,751	59,137	35,482
25-2012		20122	Equip Operator Journey II	PT	A	LL	Eagle	2FF	53 J	7.0		38,164	0	2,359	25,642	66,165	
25-2013		20123	Equip Operator Jrny III/Lead	FT	A	LL	Eagle	2FF	52 K	12.0		72,121	0	2,601	45,891	120,613	72,368
25-2014		20124	Equip Operator Journey II	PT	A	LL	Eagle	2FF	53 K	7.0		39,486	0	2,441	26,159	68,086	40,852
25-2017		20127	Equip Operator Journey I	FT	A	LL	Fairbanks	2EE	54 C / D	12.0		54,163	0	7,689	41,154	103,006	
25-2018		20128	Equip Operator Sub Journey II	PT	A	LL	Nenana	2HH	56 J / K	11.0		53,558	0	4,126	38,088	95,772	
25-2019		20129	Equip Operator Sub Journey II	FT	A	LL	Sag River	2JJ	56 B / C	12.0		51,990	0	7,347	40,228	99,565	64,717
25-2021		20131	Equip Operator Journey II	FT	A	LL	Northway	2FF	53 A / B	12.0		54,993	0	7,788	41,496	104,277	62,566
25-2022		20132	Equip Operator Journey I	FT	A	LL	Fairbanks	2EE	54 C / D	12.0		53,732	0	7,689	40,995	102,416	61,450
25-2023		20133	Rural Airport Foreman	FT	A	LL	Deadhorse	2JJ	49 L / M	12.0		90,343	0	12,996	56,425	159,764	39,941
25-2025		20134	Equip Operator Journey II	PT	A	LL	Cantwell	2HH	53 F	6.0		32,608	0	4,704	22,928	60,240	15,060
25-2026		20135	Equip Operator Journey II	FT	A	LL	Dalton Highway	2JJ	53 L	12.0		69,064	0	9,963	47,476	126,503	
25-2028		20136	Equip Operator Jrny III/Lead	FT	A	LL	Chandalar (Chandl	2JJ	52 N / O	12.0		85,412	0	12,102	54,281	151,795	83,487
25-2029		20137	Equip Operator Jrny III/Lead	FT	A	LL	Sag River	2JJ	52 L	12.0		78,567	0	11,334	51,479	141,380	91,897
25-2030		20138	Equip Operator Jrny III/Lead	FT	A	LL	Seven Mile Camp	2JJ	52 K	12.0		76,051	0	10,971	50,419	137,441	89,337
25-2031		20139	Equip Operator Journey II	FT	A	LL	Seven Mile Camp	2JJ	53 B / C	12.0		60,612	0	8,604	43,865	113,081	73,503
25-2032		20140	Equip Operator Jrny III/Lead	FT	A	LL	Jim River	2JJ	52 E / F	12.0		70,649	0	9,975	48,064	128,688	77,213
25-2034		20142	Equip Operator Jrny III/Lead	FT	A	LL	Coldfoot Camp	2JJ	52 L / M	12.0		79,113	0	11,334	51,680	142,127	85,276
25-2035		20143	Equip Operator Journey II	FT	A	LL	Sag River	2JJ	53 E / F	12.0		66,513	0	9,405	46,332	122,250	79,463
25-2036		20144	Equip Operator Journey II	PT	A	LL	Chandalar (Chandl	2JJ	53 E / F	11.5		63,549	0	4,702	42,743	110,994	66,596
25-2037		20145	Equip Operator Journey II	FT	A	LL	Unalakleet	2II	53 D / E	11.5		60,347	0	8,988	43,142	112,477	56,239
25-2038		20146	Equip Operator Journey II	FT	A	LL	Dalton Highway	2JJ	53 P	12.0		79,378	0	11,451	51,820	142,649	
25-2040		20148	Equip Operator Journey II	FT	A	LL	Sag River	2JJ	53 F	12.0		67,171	0	9,690	46,679	123,540	80,301
25-2041		20149	Equipment Operator Foreman I	FT	A	LL	Dalton Highway	2JJ	51 O / P	12.0		88,219	0	12,447	55,441	156,107	
25-2042		20150	Equip Operator Journey II	FT	A	LL	Coldfoot Camp	2JJ	53 F	12.0		67,171	0	9,690	46,679	123,540	74,124
25-2043		20151	Equip Operator Jrny III/Lead	FT	A	LL	Deadhorse	2JJ	52 J / K	12.0		74,429	0	10,620	49,693	134,742	107,794
25-2044		20152	Equip Operator Jrny III/Lead	FT	A	LL	Barrow	2JJ	52 N	12.0		83,891	0	12,102	53,721	149,714	119,771
25-2045		20153	Equip Operator Journey II	FT	A	LL	Dalton Highway	2JJ	53 K	12.0		66,714	0	9,624	46,486	122,824	
25-2046		20154	Equip Operator Jrny III/Lead	FT	A	LL	Deadhorse	2JJ	52 K / L	12.0		76,785	0	10,971	50,689	138,445	124,601

Note: If a position is split, an asterisk (*) will appear in the Split/Count column. If the split position is also counted in the component, two asterisks (**) will appear in this column.
 [No valid job title] appearing in the Job Class Title indicates that the PCN has an invalid class code or invalid range for the class code effective date of this scenario.

Personal Services Expenditure Detail (1445)

Department of Transportation/Public Facilities

Scenario: FY2020 Governor Amended (15636)
 Component: Northern Region Highways and Aviation (2068)
 RDU: Highways, Aviation and Facilities (408)

Status PCN	Tracking ID	Job Class Title	Time Status	Retire Code	Barg Unit	Location	Salary Sched	Range / Steps	Comp Months	Split / Count	Annual Salaries	COLA	Premium Pay	Annual Benefits	Total Costs	UGF Amount
25-2047	20155	Equip Operator Jrny III/Lead	FT	A	LL	Deadhorse	2JJ	52 K / L	12.0		77,729	0	10,971	51,037	139,737	111,790
25-2048	20156	Equip Operator Jrny III/Lead	FT	A	LL	Deadhorse	2JJ	52 N	12.0		83,891	0	12,102	53,721	149,714	119,771
25-2049	20157	Equip Operator Journey II	FT	A	LL	Montana Creek	2EE	53 E / F	12.0		61,111	0	8,697	44,083	113,891	62,640
25-2050	20158	Equip Operator Journey I	FT	A	LL	Chandalar (Chandl	2JJ	54 C / D	12.0		59,790	0	8,397	43,486	111,673	67,004
25-2051	20159	Equip Operator Journey II	FT	A	LL	Chandalar (Chandl	2JJ	53 M	12.0		76,405	0	11,022	50,568	137,995	82,797
25-2053	20161	Equip Operator Journey II	FT	A	LL	Jim River	2JJ	53 F / J	12.0		67,535	0	9,690	46,813	124,038	74,423
25-2055	20163	Equip Operator Journey I	FT	A	LL	Livengood	2HH	54 C / D	12.0		57,907	0	8,115	42,689	108,711	65,227
25-2056	20164	Maint Spec Etrician Journey II	FT	A	LL	Deadhorse	2JJ	51 B / C	12.0		67,558	0	9,576	46,779	123,913	
25-2057	20165	Equip Operator Journey II	FT	A	LL	Sag River	2JJ	53 F / J	12.0		68,081	0	9,690	47,014	124,785	81,110
25-2058	20166	Equip Operator Journey II	FT	A	LL	Jim River	2JJ	53 J	12.0		69,355	0	10,005	47,599	126,959	76,175
25-2059	20167	Equip Operator Journey I	FT	A	LL	Seven Mile Camp	2JJ	54 D / E	12.0		61,126	0	8,646	44,069	113,841	73,997
25-2060	20168	Equip Operator Journey II	FT	A	LL	Livengood	2HH	53 N	12.0		76,987	0	11,106	50,813	138,906	83,344
25-2061	20169	Equipment Operator Foreman II	FT	A	LL	Deadhorse	2JJ	50 B / C	12.0		70,634	0	10,011	48,072	128,717	102,974
25-2062	20170	Equip Operator Journey II	FT	A	LL	Chandalar (Chandl	2JJ	53 L / M	12.0		75,391	0	10,671	50,066	136,128	81,677
25-2064	20172	Equip Operator Jrny III/Lead	FT	A	LL	Deadhorse	2JJ	52 K / L	12.0		77,729	0	10,971	51,037	139,737	111,790
25-2065	20173	Equip Operator Journey II	FT	A	LL	Seven Mile Camp	2JJ	53 P	12.0		84,286	0	12,159	53,888	150,333	97,716
25-2066	20174	Equip Operator Journey II	FT	A	LL	Jim River	2JJ	53 J	12.0		69,355	0	10,005	47,599	126,959	76,175
25-2068	20176	Equip Operator Jrny III/Lead	FT	A	LL	Deadhorse	2JJ	52 C / D	12.0		66,286	0	9,396	46,245	121,927	97,542
25-2069	20177	Equip Operator Journey I	FT	A	LL	Manley Hot Spring	2HH	54 B / C	12.0		54,867	0	7,875	41,482	104,224	62,534
25-2070	20178	Equip Operator Journey II	FT	A	LL	Chandalar (Chandl	2JJ	53 K / L	12.0		72,503	0	10,332	48,878	131,713	79,028
25-2071	20179	Equip Operator Journey II	FT	A	LL	Fairbanks	2EE	53 F	12.0		62,263	0	8,982	44,612	115,857	75,307
25-2072	20180	Equip Operator Journey I	FT	A	LL	Fairbanks	2EE	54 B / C	12.0		52,260	0	7,449	40,365	100,074	60,044
25-2073	20181	Admin Asst III	FT	A	GP	Fairbanks	203	15 A / B	12.0		49,266	2,097	1,835	37,301	90,499	72,399
25-2074	20182	Equip Operator Sub Journey I	PT	A	LL	Fairbanks	2EE	58 D / E	10.0		38,070	0	3,217	30,520	71,807	43,084
25-2075	20183	Maint Spec Tces Foreman	FT	A	LL	Fairbanks	2EE	50 C / D	12.0		66,974	0	9,609	46,576	123,159	
25-2077	20185	Equip Operator Journey I	FT	A	LL	Fairbanks	2EE	54 E / F	12.0		57,509	0	8,196	42,572	108,277	64,966
25-2079	20186	Equip Operator Journey I	FT	A	LL	Fairbanks	2EE	54 M / N	12.0		68,029	0	9,714	47,003	124,746	74,848
25-2080	20187	Equip Operator Journey I	FT	A	LL	Sag River	2JJ	54 C / D	12.0		59,143	0	8,397	43,248	110,788	
25-2081	20188	Equip Operator Journey I	FT	A	LL	Fairbanks	2EE	54 E / F	12.0		57,586	0	8,196	42,601	108,383	65,030

Note: If a position is split, an asterisk (*) will appear in the Split/Count column. If the split position is also counted in the component, two asterisks (**) will appear in this column.
 [No valid job title] appearing in the Job Class Title indicates that the PCN has an invalid class code or invalid range for the class code effective date of this scenario.

Personal Services Expenditure Detail (1445)

Department of Transportation/Public Facilities

Scenario: FY2020 Governor Amended (15636)
Component: Northern Region Highways and Aviation (2068)
RDU: Highways, Aviation and Facilities (408)

Status	PCN	Tracking ID	Job Class Title	Time Status	Retire Code	Barg Unit	Location	Salary Sched	Range / Steps	Comp Months	Split / Count	Annual Salaries	COLA	Premium Pay	Annual Benefits	Total Costs	UGF Amount
25-2083	20189		Equip Operator Journey II	PT	A	LL	Trimms Camp	2FF	53 B / C	9.0		42,753	0	4,018	31,006	77,777	46,666
25-2085	20190		Equip Operator Journey II	PT	A	LL	Trimms Camp	2FF	53 E / F	9.0		47,430	0	4,561	32,928	84,919	33,968
25-2086	20191		Equip Operator Journey II	PT	A	LL	Coldfoot Camp	2JJ	53 J	11.5		66,465	0	5,002	43,927	115,394	
25-2087	20192		Equip Operator Journey II	FT	A	LL	Nenana	2HH	53 L / M	12.0		74,348	0	10,389	49,578	134,315	80,589
25-2088	20193		Equip Operator Journey II	FT	A	LL	Fairbanks	2EE	53 F	12.0		62,263	0	8,982	44,612	115,857	69,514
25-2089	20194		Equip Operator Journey II	FT	A	LL	Tok	2FF	53 O	12.0		77,631	0	11,199	51,085	139,915	43,024
25-2090	20195		Equip Operator Journey II	FT	A	LL	Chandalar (Chandl	2JJ	53 L	12.0		73,971	0	10,671	49,543	134,185	80,511
25-2091	20196		Equip Operator Journey II	FT	A	LL	Seven Mile Camp	2JJ	53 L / M	12.0		75,492	0	10,671	50,103	136,266	88,573
25-2098	20203		Safety Officer	FT	A	GP	Fairbanks	203	18 J / K	12.0		75,797	3,349	5,791	48,523	133,460	133,460
25-2105	20210		Office Assistant II	FT	A	GP	Fairbanks	203	10 G / J	12.0		42,480	1,810	1,608	34,719	80,617	80,617
25-2117	20222		Office Assistant II	FT	A	GP	Fairbanks	203	10 J / K	12.0		44,504	1,895	1,675	35,489	83,563	66,850
25-2119	20223		Engineer/Architect III	FT	A	SS	Fairbanks	203	25 E / F	12.0		122,288	0	0	63,844	186,132	18,613
25-2120	20224		Accounting Tech I	FT	A	GP	Fairbanks	203	12 E / F	12.0		44,882	1,983	3,433	36,275	86,573	69,258
25-2122	20226		Administrative Officer II	FT	A	SS	Fairbanks	203	19 M	12.0		98,704	0	0	55,163	153,867	153,867
25-2123	20227		Rural Airport Foreman	FT	A	LL	Nome	2II	49 F / J	12.0		82,556	0	11,631	53,057	147,244	
25-2124	20228		Equipment Operator Foreman I	FT	A	LL	Nome	2II	51 M	12.0		84,369	0	12,171	53,923	150,463	90,278
25-2125	20229		Equip Operator Jrny III/Lead	FT	A	LL	Nome	2II	52 B / C	12.0		62,960	0	8,979	44,867	116,806	93,445
25-2126	20230		Equip Operator Journey II	FT	A	LL	Nome	2II	53 E / F	12.0		64,547	0	9,264	45,556	119,367	71,620
25-2127	20231		Equip Operator Journey II	FT	A	LL	Valdez	2FF	53 F	12.0		63,241	0	9,123	45,023	117,387	70,432
25-2128	20232		Rural Airport Foreman	FT	A	LL	Kotzebue	2JJ	49 K	12.0		87,156	0	12,573	55,097	154,826	154,826
25-2129	20233		Equip Operator Jrny III/Lead	FT	A	LL	Kotzebue	2JJ	52 E / F	12.0		70,384	0	9,975	47,966	128,325	115,493
25-2130	20234		Equip Operator Jrny III/Lead	FT	A	LL	Kotzebue	2JJ	52 B / C	12.0		64,336	0	9,120	45,425	118,881	106,993
25-2132	20235		Equipment Operator Foreman I	FT	A	LL	Unalakleet	2II	51 L / M	12.0		82,295	0	11,772	53,012	147,079	80,893
25-2135	20237		Equip Operator Journey II	FT	A	LL	Nome	2II	53 B / C	12.0		59,336	0	8,463	43,343	111,142	66,685
25-2136	20238		Equip Operator Journey II	FT	A	LL	Nome	2II	53 E / F	12.0		65,288	0	9,264	45,829	120,381	72,229
25-2137	20239		Equip Operator Jrny III/Lead	FT	A	LL	Kotzebue	2JJ	52 L / M	12.0		81,188	0	11,712	52,583	145,483	130,935
25-2138	20240		Admin Asst III	FT	A	GP	Nome	237	15 B / C	12.0		66,909	2,850	2,531	44,051	116,341	93,073
25-2139	20241		Equip Operator Jrny III/Lead	FT	A	LL	Nome	2II	52 M	12.0		80,210	0	11,571	52,171	143,952	115,162
25-2140	20242		Equip Operator Jrny III/Lead	FT	A	LL	Nome	2II	52 F	12.0		70,290	0	10,140	47,993	128,423	102,738

Note: If a position is split, an asterisk (*) will appear in the Split/Count column. If the split position is also counted in the component, two asterisks (**) will appear in this column.
 [No valid job title] appearing in the Job Class Title indicates that the PCN has an invalid class code or invalid range for the class code effective date of this scenario.

Personal Services Expenditure Detail (1445)

Department of Transportation/Public Facilities

Scenario: FY2020 Governor Amended (15636)
Component: Northern Region Highways and Aviation (2068)
RDU: Highways, Aviation and Facilities (408)

Status	PCN	Tracking ID	Job Class Title	Time Status	Retire Code	Barg Unit	Location	Salary Sched	Range / Steps	Comp Months	Split / Count	Annual Salaries	COLA	Premium Pay	Annual Benefits	Total Costs	UGF Amount
25-2142	20244	Office Assistant III	FT	A	GP	Kotzebue	260	11 F / G	12.0	68,942	2,935	2,575	44,816	119,268	119,268		
25-2144	20245	Maint Spec Etrician Journey II	FT	A	LL	Nome	2II	51 F	12.0	73,888	0	10,659	49,508	134,055	80,433		
25-2146	20247	Equip Operator Jrny III/Lead	FT	A	LL	Nome	2II	52 J	12.0	72,640	0	10,479	48,982	132,101	105,681		
25-2147	20248	Equip Operator Jrny III/Lead	FT	A	LL	Kotzebue	2JJ	52 A / B	12.0	62,915	0	8,856	44,805	116,576	104,918		
25-2149	20250	Equip Operator Journey II	FT	A	LL	Unalakleet	2II	53 F	12.0	66,194	0	9,549	46,267	122,010	109,809		
25-2151	20252	Equip Operator Journey II	FT	A	LL	Nome	2II	53 E / F	12.0	65,041	0	9,264	45,738	120,043	72,026		
25-2152	20253	Equip Operator Journey II	FT	A	LL	Nome	2II	53 E / F	12.0	65,782	0	9,264	46,011	121,057	72,634		
25-2153	20254	Equip Operator Journey II	FT	A	LL	Nome	2II	53 J	12.0	68,377	0	9,864	47,187	125,428	75,257		
25-2154	20255	Equip Operator Jrny III/Lead	FT	A	LL	Nome	2II	52 E / F	12.0	68,523	0	9,834	47,229	125,586	100,469		
25-2162	20259	Maint & Operations Super	FT	A	SS	Nome	237	21 E / F	12.0	126,408	0	0	65,361	191,769	153,415		
25-2164	20261	Equip Operator Jrny III/Lead	FT	A	LL	Valdez	2FF	52 N	12.0	79,961	0	11,535	52,066	143,562	86,137		
25-2165	20262	Equip Operator Jrny III/Lead	FT	A	LL	Valdez	2FF	52 N	12.0	79,961	0	11,535	52,066	143,562	114,850		
25-2167	20264	Rural Airport Foreman	FT	A	LL	Valdez	2FF	49 P	12.0	99,072	0	14,292	60,116	173,480	43,370		
25-2168	20265	Equip Operator Jrny III/Lead	FT	A	LL	Valdez	2FF	52 J	12.0	69,687	0	10,053	47,739	127,479	101,983		
25-2169	20266	Equip Operator Jrny III/Lead	FT	A	LL	Cordova	2EE	52 E / F	12.0	65,918	0	9,267	46,062	121,247	109,122		
25-2170	20267	Equipment Operator Foreman I	FT	A	LL	Thompson Pass	2FF	51 O	12.0	87,260	0	6,294	52,824	146,378	87,827		
25-2171	20268	Equip Operator Journey II	PT	A	LL	Slana	2FF	53 O / P	6.0	39,156	0	5,599	25,667	70,422			
25-2172	20269	Equip Operator Jrny III/Lead	PT	A	LL	Valdez	2FF	52 A / B	10.0	49,179	0	4,144	34,950	88,273	70,618		
25-2173	20270	Equip Operator Journey II	PT	A	LL	Thompson Pass	2FF	53 L	8.0	46,694	0	5,052	31,305	83,051	49,831		
25-2174	20271	Equip Operator Jrny III/Lead	FT	A	LL	Ernestine	2FF	52 O	12.0	82,768	0	11,940	53,248	147,956	88,774		
25-2175	20272	Equip Operator Journey II	PT	A	LL	Thompson Pass	2FF	53 D / E	8.0	40,126	0	4,281	28,604	73,011	43,807		
25-2176	20273	Equip Operator Journey II	FT	A	LL	Ernestine	2FF	53 L / M	12.0	72,474	0	10,455	48,912	131,841			
25-2177	20274	Equip Operator Journey II	FT	A	LL	Slana	2FF	53 O	12.0	77,631	0	11,199	51,085	139,915			
25-2178	20275	Equip Operator Journey II	FT	A	LL	Ernestine	2FF	53 F / J	12.0	65,333	0	9,123	45,794	120,250			
25-2179	20276	Equipment Operator Foreman I	FT	A	LL	Tazlina	2FF	51 N / O	12.0	85,277	0	12,159	54,252	151,688	75,844		
25-2180	20277	Equip Operator Journey II	FT	A	LL	Tazlina	2FF	53 M	12.0	72,474	0	10,455	48,912	131,841	79,105		
25-2181	20278	Equip Operator Journey II	FT	A	LL	Tazlina	2FF	53 A / B	12.0	55,425	0	7,788	41,655	104,868	52,434		
25-2182	20279	Equip Operator Journey II	FT	A	LL	Tazlina	2FF	53 J / K	12.0	67,408	0	9,438	46,673	123,519	61,760		
25-2183	20280	Equip Operator Journey II	FT	A	LL	Tazlina	2FF	53 O / P	12.0	77,972	0	11,199	51,210	140,381	91,248		

Note: If a position is split, an asterisk (*) will appear in the Split/Count column. If the split position is also counted in the component, two asterisks (**) will appear in this column.
 [No valid job title] appearing in the Job Class Title indicates that the PCN has an invalid class code or invalid range for the class code effective date of this scenario.

Personal Services Expenditure Detail (1445)

Department of Transportation/Public Facilities

Scenario: FY2020 Governor Amended (15636)
Component: Northern Region Highways and Aviation (2068)
RDU: Highways, Aviation and Facilities (408)

Status	PCN	Tracking ID	Job Class Title	Time Status	Retire Code	Barg Unit	Location	Salary Sched	Range / Steps	Comp Months	Split / Count	Annual Salaries	COLA	Premium Pay	Annual Benefits	Total Costs	UGF Amount
25-2184		20281	Equip Operator Journey II	PT	A	LL	Thompson Pass	2FF	53 B	8.0		37,142	0	4,018	27,409	68,569	
25-2185		20282	Equip Operator Journey II	FT	A	LL	Tazlina	2FF	53 D / E	12.0		61,026	0	8,562	44,002	113,590	56,795
25-2186		20283	Equip Operator Journey II	FT	A	LL	Tazlina	2FF	53 B / C	12.0		55,787	0	8,037	41,880	105,704	
25-2187		20284	Equip Operator Journey II	PT	A	LL	Thompson Pass	2FF	53 B / C	8.0		37,365	0	4,018	27,491	68,874	
25-2188		20285	Equip Operator Jrny III/Lead	FT	A	LL	Paxson	2FF	52 N / O	12.0		81,949	0	11,535	52,798	146,282	87,769
25-2189		20286	Equip Operator Journey II	PT	A	LL	Ernestine	2FF	53 A / B	8.0		37,070	0	3,894	27,336	68,300	
25-2190		20287	Equip Operator Journey II	FT	A	LL	Paxson	2FF	53 P	12.0		80,356	0	11,592	52,232	144,180	86,508
25-2191		20288	Equip Operator Journey II	FT	A	LL	Nelchina	2FF	53 B / C	12.0		56,532	0	8,037	42,154	106,723	53,362
25-2192		20289	Equip Operator Journey II	FT	A	LL	Tazlina	2FF	53 B / C	12.0		57,501	0	8,295	42,606	108,402	54,201
25-2193		20290	Equip Operator Jrny III/Lead	FT	A	LL	Nelchina	2FF	52 A / B	12.0		58,603	0	8,289	43,009	109,901	65,941
25-2194		20291	Equip Operator Journey II	FT	A	LL	Paxson	2FF	53 C / D	12.0		59,198	0	8,295	43,230	110,723	66,434
25-2195		20292	Equip Operator Journey II	FT	A	LL	Nelchina	2FF	53 J / K	12.0		67,502	0	9,438	46,708	123,648	61,824
25-2196		20293	Equip Operator Jrny III/Lead	FT	A	LL	Slana	2FF	52 A / B	12.0		58,451	0	8,289	42,953	109,693	
25-2197		20294	Equip Operator Journey II	FT	A	LL	Nelchina	2FF	53 L	12.0		70,041	0	10,104	47,888	128,033	76,820
25-2198		20295	Equip Operator Journey II	PT	A	LL	Tazlina	2FF	53 N	8.0		50,007	0	5,410	32,657	88,074	52,844
25-2199		20296	Equip Operator Journey II	FT	A	LL	Delta Junction	2FF	53 J	12.0		65,424	0	9,438	45,943	120,805	72,483
25-2201		20298	Equip Operator Journey II	FT	A	LL	Ernestine	2FF	53 F / J	12.0		63,968	0	9,123	45,291	118,382	71,029
25-2203		20300	Equip Operator Journey II	FT	A	LL	Cordova	2EE	53 F	12.0		62,263	0	8,982	44,612	115,857	104,271
25-2204		20301	Equip Operator Sub Journey II	PT	A	LL	Tazlina	2FF	56 J / K	5.0		23,305	0	5,989	18,444	47,738	
25-2205		20302	Safety & Emerg Supp Spec	PT	A	GP	Thompson Pass	200	17 M	6.0		38,172	1,808	5,877	25,460	71,317	
25-2206		20303	Equip Operator Sub Journey II	FT	A	LL	Chandalar (Chandl	2JJ	56 B / C	12.0		52,302	0	7,347	40,343	99,992	9,999
25-2208		20305	Equip Operator Journey II	PT	A	LL	Paxson	2FF	53 C / D	8.0		38,720	0	4,147	28,037	70,904	
25-2209		20306	Equip Operator Journey II	PT	A	LL	Ernestine	2FF	53 B	6.0		27,856	0	4,018	20,926	52,800	
25-2210		20307	Equip Operator Journey II	PT	A	LL	Valdez	2FF	53 K	10.0		56,409	0	4,882	37,883	99,174	59,504
25-2211		20308	Equip Operator Journey II	PT	A	LL	Slana	2FF	53 E / F	8.0		41,008	0	4,419	28,979	74,406	44,644
25-2213		20309	Equip Operator Sub Journey I	PT	A	LL	Tazlina	2FF	58 A	5.0		17,295	0	2,994	15,129	35,418	
25-2214		20310	Equip Operator Sub Journey I	PT	A	LL	Ernestine	2FF	58 B	5.0		17,833	0	3,087	15,362	36,282	
25-2215		20311	Equip Operator Journey II	PT	A	LL	Slana	2FF	53 C / D	8.0		39,337	0	4,147	28,264	71,748	
25-2216		20312	Equip Operator Sub Journey I	PT	A	LL	Slana	2FF	58 B	8.0		28,532	0	3,087	23,896	55,515	

Note: If a position is split, an asterisk (*) will appear in the Split/Count column. If the split position is also counted in the component, two asterisks (**) will appear in this column.
 [No valid job title] appearing in the Job Class Title indicates that the PCN has an invalid class code or invalid range for the class code effective date of this scenario.

Personal Services Expenditure Detail (1445)

Department of Transportation/Public Facilities

Scenario: FY2020 Governor Amended (15636)
 Component: Northern Region Highways and Aviation (2068)
 RDU: Highways, Aviation and Facilities (408)

Status	PCN	Tracking ID	Job Class Title	Time Status	Retire Code	Barg Unit	Location	Salary Sched	Range / Steps	Comp Months	Split / Count	Annual Salaries	COLA	Premium Pay	Annual Benefits	Total Costs	UGF Amount
25-2219		20314	Equip Operator Journey II	PT	A	LL	Valdez	2FF	53 B / C	10.0		46,800	0	4,018	34,028	84,846	
25-2220		20315	Equip Operator Journey II	PT	A	LL	Thompson Pass	2FF	53 J / K	8.0		43,899	0	4,719	30,154	78,772	
25-2221		20316	Equip Operator Journey II	PT	A	LL	Thompson Pass	2FF	53 K	8.0		45,127	0	4,882	30,666	80,675	
25-2222		20317	Equip Operator Journey II	FT	A	LL	Valdez	2FF	53 K	12.0		67,691	0	9,765	46,898	124,354	
25-2232		20322	Admin Asst III	FT	A	GP	Valdez	211	15 B / C	12.0		54,368	2,316	2,051	39,258	97,993	78,394
25-2241		20327	Maint & Operations Super	FT	A	SS	Tazlina	200	21 L / M	12.0		104,947	0	0	57,461	162,408	129,926
25-2242		20328	Office Assistant II	FT	A	GP	Valdez	211	10 E / F	12.0		43,176	1,839	1,627	34,982	81,624	65,299
25-2243		20329	Administrative Assistant II	FT	A	GP	Fairbanks	203	14 A / B	12.0		46,089	1,962	1,716	36,087	85,854	77,269
25-2244		20330	Admin Asst III	FT	A	GP	Tazlina	200	15 F / G	12.0		56,571	2,322	0	39,314	98,207	78,566
25-2245		20331	Maint & Operations Super	FT	A	SS	Valdez	211	21 L	12.0		113,286	0	0	60,531	173,817	139,054
25-3356		21099	Equip Operator Jrny III/Lead	FT	A	LL	Barrow	2JJ	52 O	12.0		81,296	0	12,507	52,915	146,718	117,374
25-3385		21124	Maint & Operations Super	FT	A	SS	Fairbanks	2S4	21 L	12.0		108,690	0	0	58,839	167,529	134,023
25-3428		21165	Equip Operator Jrny III/Lead	FT	A	LL	Trimms Camp	2FF	52 E / F	12.0		66,188	0	9,408	46,213	121,809	73,085
25-3437		21174	Equip Operator Journey II	FT	A	LL	Fairbanks	2EE	53 L	12.0		69,064	0	9,963	47,476	126,503	75,902
25-3488		21221	Office Assistant II	FT	A	GP	Fairbanks	203	10 E / F	12.0		40,164	1,710	1,510	33,831	77,215	77,215
25-3489		21222	Office Assistant II	PT	A	GP	Tok	200	10 C / D	8.0		24,050	1,044	1,385	21,690	48,169	38,535
25-3490		21223	Office Assistant II	FT	A	GP	Tazlina	200	10 D / E	12.0		37,572	1,542	0	32,321	71,435	57,148
25-3523		21252	Equip Operator Journey II	PT	A	LL	Tok	2FF	53 F / J	11.5		61,788	0	4,561	42,043	108,392	
25-3554		21278	Equip Operator Jrny III/Lead	FT	A	LL	Fairbanks	2EE	52 N / O	12.0		79,451	0	11,394	51,826	142,671	
25-3610		21333	Equip Operator Journey II	PT	A	LL	Cantwell	2HH	53 D	6.0		30,664	0	4,423	22,109	57,196	
25-3655		21372	Equip Operator Jrny III/Lead	FT	A	LL	Kotzebue	2JJ	52 N	12.0		83,891	0	12,102	53,721	149,714	134,743
25-3656		21373	Equip Operator Jrny III/Lead	FT	A	LL	Kotzebue	2JJ	52 B / C	12.0		64,814	0	9,120	45,601	119,535	107,582
25-3657		21374	Equip Operator Jrny III/Lead	FT	A	LL	Nome	2II	52 D / E	12.0		67,235	0	9,540	46,647	123,422	98,738
25-3658		21375	Equip Operator Jrny III/Lead	FT	A	LL	Kotzebue	2JJ	52 J / K	12.0		75,240	0	10,620	49,991	135,851	122,266
25-3660		21377	Equipment Operator Foreman II	FT	A	LL	Barrow	2JJ	50 L	12.0		86,428	0	12,468	54,790	153,686	115,265
25-3661		21378	Equipment Operator Foreman I	FT	A	LL	Dalton Highway	2JJ	51 O / P	12.0		88,865	0	12,447	55,679	156,991	
25-3662		21379	Equip Operator Journey II	PT	A	LL	Dalton Highway	2JJ	53 O	11.5		73,460	0	5,529	46,696	125,685	
25-3663		21380	Equip Operator Journey II	FT	A	LL	Fairbanks	2EE	53 F / J	12.0		62,445	0	8,982	44,679	116,106	69,664
25-3664		21381	Equip Operator Journey II	FT	A	LL	Chandalar (Chandl	2JJ	53 C / D	12.0		63,128	0	8,862	44,886	116,876	

Note: If a position is split, an asterisk (*) will appear in the Split/Count column. If the split position is also counted in the component, two asterisks (**) will appear in this column.
 [No valid job title] appearing in the Job Class Title indicates that the PCN has an invalid class code or invalid range for the class code effective date of this scenario.

Personal Services Expenditure Detail (1445)

Department of Transportation/Public Facilities

Scenario: FY2020 Governor Amended (15636)
 Component: Northern Region Highways and Aviation (2068)
 RDU: Highways, Aviation and Facilities (408)

Status	PCN	Tracking ID	Job Class Title	Time Status	Retire Code	Barg Unit	Location	Salary Sched	Range / Steps	Comp Months	Split / Count	Annual Salaries	COLA	Premium Pay	Annual Benefits	Total Costs	UGF Amount
	25-3665	21382	Rural Airport Foreman	FT	A	LL	Barrow	2JJ	49 L	12.0		90,088	0	12,996	56,332	159,416	39,854
	25-3668	21385	Equip Operator Journey II	FT	A	LL	Coldfoot Camp	2JJ	53 B / C	12.0		60,910	0	8,604	43,974	113,488	
	25-3669	21386	Equip Operator Journey II	FT	A	LL	Livengood	2HH	53 J	12.0		67,400	0	9,723	46,775	123,898	
	25-3670	21387	Equip Operator Jrny III/Lead	FT	A	LL	Deadhorse	2JJ	52 N / O	12.0		84,242	0	12,102	53,851	150,195	120,156
	25-3671	21388	Equipment Operator Foreman II	FT	A	LL	Deadhorse	2JJ	50 J	12.0		80,917	0	11,673	52,469	145,059	116,047
	25-3672	21389	Equip Operator Journey II	FT	A	LL	Dalton Highway	2JJ	53 J	12.0		64,447	0	9,297	45,531	119,275	
	25-3673	21390	Equip Operator Journey II	FT	A	LL	Montana Creek	2EE	53 F	12.0		62,263	0	8,982	44,612	115,857	63,721
	25-3674	21391	Equip Operator Journey II	FT	A	LL	Northway	2FF	53 E / F	12.0		61,347	0	8,838	44,221	114,406	
	25-3675	21392	Equip Operator Journey II	FT	A	LL	Montana Creek	2EE	53 F / J	12.0		64,447	0	9,297	45,531	119,275	65,601
	25-3676	21393	Equip Operator Jrny III/Lead	FT	A	LL	Montana Creek	2EE	52 N	12.0		78,983	0	11,394	51,654	142,031	78,117
	25-3715	21418	Environ Impact Analyst I	FT	A	GP	Fairbanks	203	15 A / B	12.0		49,192	2,170	3,670	37,949	92,981	
	25-N09040	21564	Equip Operator Sub Journey I	NP	N	LL	Fairbanks	2EE	58 A	5.0		16,914	0	2,928	2,494	22,336	
	25-N09041	21565	Equip Operator Sub Journey I	NP	N	LL	Fairbanks	2EE	58 A	5.0		16,914	0	2,928	2,494	22,336	
	25-N09042	21562	Equip Operator Sub Journey I	NP	N	LL	Fairbanks	2EE	58 A	5.0		16,914	0	2,928	2,494	22,336	
	25-N09043	21563	Equip Operator Sub Journey I	NP	N	LL	Fairbanks	2EE	58 A	5.0		16,914	0	2,928	2,494	22,336	
	25-N09044	21566	Equip Operator Sub Journey I	NP	N	LL	Fairbanks	2EE	58 A	5.0		16,914	0	2,928	2,494	22,336	
	25-N09047	21554	Equip Operator Sub Journey I	NP	N	LL	Tazlina	2FF	58 A	5.0		17,295	0	2,994	2,550	22,839	
	25-N09048	21555	Equip Operator Sub Journey I	NP	N	LL	Tazlina	2FF	58 A	5.0		17,295	0	2,994	2,550	22,839	
	25-N09049	21556	Equip Operator Sub Journey I	NP	N	LL	Tazlina	2FF	58 A	5.0		17,295	0	2,994	2,550	22,839	
	25-N09050	21557	Equip Operator Sub Journey I	NP	N	LL	Tazlina	2FF	58 A	5.0		17,295	0	2,994	2,550	22,839	
	25-N09051	21558	Equip Operator Sub Journey I	NP	N	LL	Tazlina	2FF	58 A	5.0		17,295	0	2,994	2,550	22,839	
	25-N09052	21559	Equip Operator Sub Journey I	NP	N	LL	Tazlina	2FF	58 A	5.0		17,295	0	2,994	2,550	22,839	
	25-N11047	26176	Equip Operator Sub Journey II	NP	N	LL	Dalton Highway	2JJ	56 A	5.0		18,699	0	3,237	2,757	24,693	
	25-N11048	26177	Equip Operator Sub Journey II	NP	N	LL	Dalton Highway	2JJ	56 A	5.0		18,699	0	3,237	2,757	24,693	
	25-N11049	26174	Equip Operator Sub Journey II	NP	N	LL	Dalton Highway	2JJ	56 A	5.0		18,699	0	3,237	2,757	24,693	
	25-N11050	26175	Equip Operator Sub Journey II	NP	N	LL	Dalton Highway	2JJ	56 A	5.0		18,699	0	3,237	2,757	24,693	
	25-N11064	26173	Equip Operator Sub Journey II	NP	N	LL	Dalton Highway	2JJ	56 A	5.0		18,699	0	3,237	2,757	24,693	
	25-N11065	26172	Equip Operator Sub Journey II	NP	N	LL	Dalton Highway	2JJ	56 A	5.0		18,699	0	3,237	2,757	24,693	
	25-N11066	26171	Equip Operator Sub Journey II	NP	N	LL	Dalton Highway	2JJ	56 A	5.0		18,699	0	3,237	2,757	24,693	

Note: If a position is split, an asterisk (*) will appear in the Split/Count column. If the split position is also counted in the component, two asterisks (**) will appear in this column.
 [No valid job title] appearing in the Job Class Title indicates that the PCN has an invalid class code or invalid range for the class code effective date of this scenario.

Personal Services Expenditure Detail (1445)

Department of Transportation/Public Facilities

Scenario: FY2020 Governor Amended (15636)
Component: Northern Region Highways and Aviation (2068)
RDU: Highways, Aviation and Facilities (408)

Status	PCN	Tracking ID	Job Class Title	Time Status	Retire Code	Barg Unit	Location	Salary Sched	Range / Steps	Comp Months	Split / Count	Annual Salaries	COLA	Premium Pay	Annual Benefits	Total Costs	UGF Amount
25-N11067	26167	Equip Operator Sub Journey II	NP	N	LL	Dalton Highway	2JJ	56	A	5.0		18,699	0	3,237	2,757	24,693	
25-N16168	21553	Equip Operator Sub Journey I	NP	N	LL	Healy	2HH	58	A	5.0		18,067	0	3,127	2,664	23,858	

	Total Positions	New	Deleted	
Full Time Positions:	248	0	0	Total Salary Costs: 19,978,597
Part Time Positions:	53	0	0	Total COLA: 68,318
Non Permanent Positions:	20	0	0	Total Premium Pay: 2,454,780
Positions in Component:	321	0	0	Total Benefits: 13,368,769
Total Component Months:	3497.5			Total Pre-Vacancy: 35,870,464
				Minus Vacancy Adjustment of 5.27%: (1,890,664)
				Total Post-Vacancy: 33,979,800
				Plus Lump Sum Premium Pay: 0
				Personal Services Line 100: 33,979,800

PCN Funding Sources:	Pre-Vacancy	Post-Vacancy	Percent
1002 Federal Receipts	1,607	1,522	0.00%
1004 General Fund Receipts	17,422,202	16,503,911	48.57%
1005 General Fund/Program Receipts	171,773	162,719	0.48%
1007 Interagency Receipts	86,235	81,690	0.24%
1039 U/A Indirect Cost Recovery	577,251	546,825	1.61%
1061 Capital Improvement Project Receipts	7,030,132	6,659,587	19.60%
1108 Statutory Designated Program Receipts	66,939	63,411	0.19%
1200 Vehicle Rental Tax Receipts	151,295	143,321	0.42%
1239 Aviation Fuel Tax Revenue	792,997	751,199	2.21%
1244 Rural Airport Receipts	292,023	276,631	0.81%
1249 Motor Fuel Tax Receipts	9,278,010	8,788,984	25.87%
Total PCN Funding:	35,870,464	33,979,800	100.00%

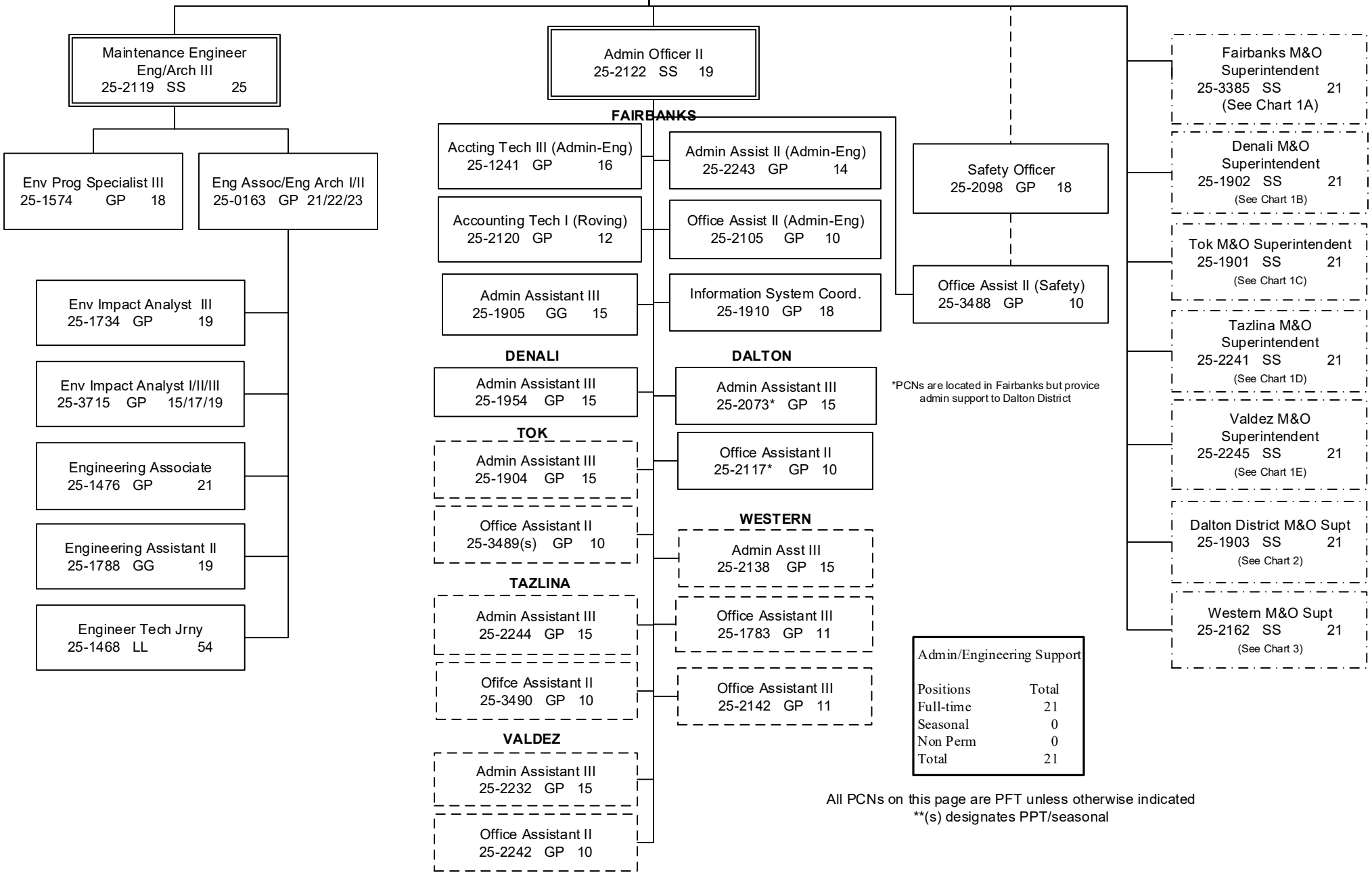
Note: If a position is split, an asterisk (*) will appear in the Split/Count column. If the split position is also counted in the component, two asterisks (**) will appear in this column. [No valid job title] appearing in the Job Class Title indicates that the PCN has an invalid class code or invalid range for the class code effective date of this scenario.

**DEPARTMENT OF TRANSPORTATION & PUBLIC FACILITIES
HIGHWAYS, AVIATION AND FACILITIES (408)
NORTHERN REGION HIGHWAYS & AVIATION (2068)
FY2020 GOVERNOR AMENDED BUDGET
ADMINISTRATION/ENGINEERING, CHART 1**

**FAIRBANKS
(JBA)**

NORTHERN REGION HIGHWAYS & AVIATION	
Positions	Total
Full-Time	248
Seasonal	53
Non-Perm	20
Total	321

**M&O Chief
Eng/Arch IV
25-1914 SS 26**



*PCNs are located in Fairbanks but provide admin support to Dalton District

All PCNs on this page are PFT unless otherwise indicated
**(s) designates PPT/seasonal

**DEPARTMENT OF TRANSPORTATION & PUBLIC FACILITIES
HIGHWAYS, AVIATION AND FACILITIES (408)
NORTHERN REGION HIGHWAYS & AVIATION (2068)
FY2020 GOVERNOR AMENDED BUDGET
FAIRBANKS DISTRICT, CHART 1A**

Fairbanks District	
Positions	Total
Full-time	48
Seasonal(PPT)	3
Non Perm	3
Total	54

**FAIRBANKS
(JBA)**

Eng/Arch IV
25-1914 SS 26

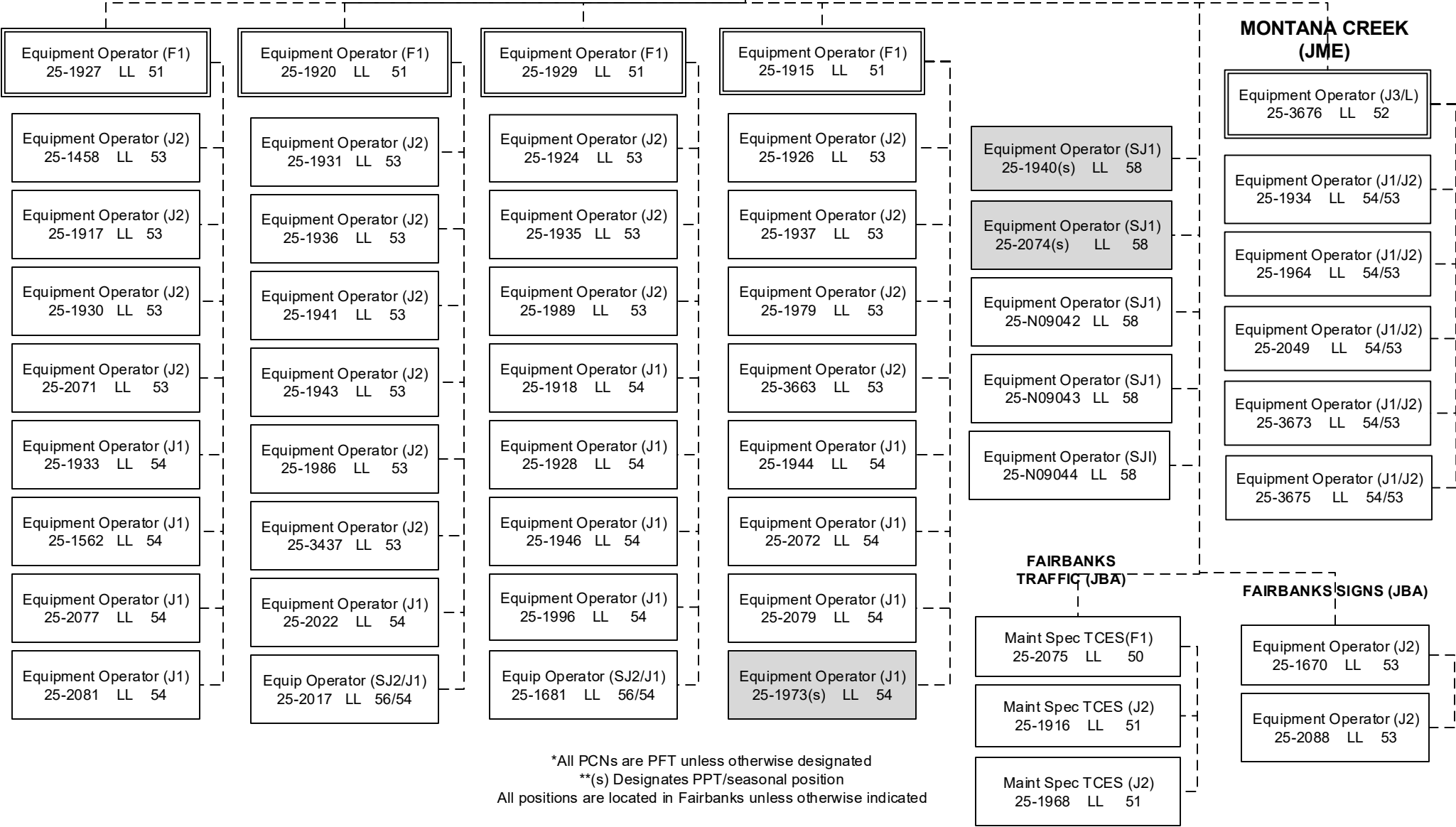
Fairbanks M&O Superintendent
25-3385 SS 21

Equipment Operator (F2)
25-1919 LL 50

Admin Assistant III
25-1905 GG 15

KEY:

- F1 – Foremen I
- F2 – Foremen II
- J1 – Journey I
- J2 – Journey II
- J3/L – Journey III / Lead
- SJ1 – Sub-Journey I
- SJII – Sub-Journey II
- L – Lead
- S – PPT/SACL



*All PCNs are PFT unless otherwise designated
 **(s) Designates PPT/seasonal position
 All positions are located in Fairbanks unless otherwise indicated

**DEPARTMENT OF TRANSPORTATION & PUBLIC FACILITIES
HIGHWAYS, AVIATION AND FACILITIES (408)
NORTHERN REGION HIGHWAYS & AVIATION (2068)
FY2020 GOVERNOR AMENDED BUDGET
DENALI DISTRICT, CHART 1B**

**FAIRBANKS
(JBA)**

Eng/Arch IV
25-1914 SS 26

Denali M&O Superintendent
25-1902 SS 21

Admin Assistant III
25-1954 GP 15

**CANTWELL
(HJI)**

Equipment Operator (F1)
25-1952 LL 51

Equipment Operator (J1/J2)
25-1921 LL 54/53

Equipment Operator (J1/J2)
25-1991 LL 55/53

Equipment Operator (J1/J2)
25-1999 LL 54/53

Equipment Operator (J1/J2)
25-2000 LL 54/53

Equipment Operator (J1/J2)
25-2001 LL 54/53

Equipment Operator (J2)
25-2025(s) LL 53

Equipment Operator (J2)
25-3610(s) LL 53

Equipment Operator (SJ1)
25-1706(s) LL 58

**HEALY
(HJA)**

Equipment Operator (J3/L)
25-1995 LL 52

Equipment Operator (J2)
25-1997 LL 53

Equipment Operator (J2)
25-1998(s) LL 53

Equipment Operator (J1)
25-1961(s) LL 54

Equipment Operator (SJ1)
25-N16168 LL 58

Denali District

Positions	Total
Full-time	18
Seasonal	7
Non Perm	3
Total	28

*All PCNs PFT unless otherwise designated
**(s) designates PPT/seasonal

**NENANA
(JBM)**

Equipment Operator (J3/L)
25-1990 LL 52

Equipment Operator (J1/J2)
25-1955 LL 54/53

Equipment Operator (J1/J2)
25-1993 LL 54/53

Equipment Operator (J1/J2)
25-2087 LL 54/53

Equipment Operator (J1)
25-1942(s) LL 54

Equipment Operator (SJ2)
25-2018(s) LL 56

KEY:

F1 – Foremen I
F2 – Foremen II
J1 – Journey I
J2 – Journey II
J3/L – Journey III / Lead
SJ1 – Sub-Journey I
SJII – Sub-Journey II
L – Lead
S – PPT/SACL

**NR BRIDGE CREW -
FAIRBANKS
(JBA)**

Equipment Operator (F1)
25-1932 LL 51

Equipment Operator (SJ1)
25-N09041 LL 58

Equipment Operator (SJ1)
25-N09040 LL 58

**RURAL AVIATION -
FAIRBANKS
(JBA)**

Equipment Operator Lead (J3/L)
25-3554 LL 52

Maint. Spec Elect (J2)
25-1583 LL 51

**GALENA
(HYC)**

Equipment Operator (F1)
25-1908 LL 51

Equipment Operator (J2)
25-1909 LL 53

**DEPARTMENT OF TRANSPORTATION & PUBLIC FACILITIES
HIGHWAYS, AVIATION AND FACILITIES (408)
NORTHERN REGION HIGHWAYS & AVIATION (2068)
FY2020 GOVERNOR AMENDED BUDGET
TOK DISTRICT, CHART 1C**

Eng/Arch IV
25-1914 SS 26

**TOK
(HEB)**

Tok M&O Superintendent
25-1901 SS 21

Admin Assistant III
25-1904 GP 15

Office Assistant II
25-3489(s) GP 10

**DELTA
(JJB)**

- Equipment Operator (F1)
25-1932 LL 51
- Equipment Operator (J2)
25-1948 LL 53
- Equipment Operator (J2)
25-1949 LL 53
- Equipment Operator (J2)
25-1950 LL 53
- Equipment Operator (J2)
25-1951 LL 53
- Equipment Operator (J2)
25-1975 LL 53
- Equipment Operator (J2)
25-2199 LL 53
- Equipment Operator (J1)
25-1938(s) LL 54
- Equipment Operator (SJ2)
25-1967(s) LL 56

**NORTHWAY
(HEC)**

- Equipment Operator (J3/L)
25-2002 LL 52
- Equipment Operator (J2)
25-2005 LL 53
- Equipment Operator (J2)
25-2021 LL 53
- Equipment Operator (J2)
25-3674 LL 53
- Equipment Operator (J2)
25-2003(s) LL 53

EAGLE (JKA)

- Equipment Operator (J3/L)
25-2013 LL 52
- Equipment Operator (J2)
25-2012(s) LL 53
- Equipment Operator (J2)
25-2014(s) LL 53

**SOUTH FORK
(JKF)**

- Equipment Operator (J3/L)
25-1983(s) LL 52
- Equipment Operator (J1/J2)
25-2009(s) LL 54/53
- Equipment Operator (J2)
25-2010(s) LL 53
- Equipment Operator (J2)
25-2011(s) LL 53
- Equipment Operator (J1)
25-1978(s) LL 54

KEY:
F1 – Foremen I
F2 – Foremen II
J1 – Journey I
J2 – Journey II
J3/L – Journey III / Lead
SJ1 – Sub-Journey I
SJII – Sub-Journey II
L – Lead
S – PPT/SACL

*All PCNs PFT unless otherwise designated
**(s) designates PPT/seasonal

**TOK
(HEB)**

- Equipment Operator (F1)
25-1957 LL 51
- Equipment Operator (J2)
25-1958 LL 53
- Equipment Operator (J2)
25-1962 LL 53
- Equipment Operator (J2)
25-1977 LL 53
- Equipment Operator (J2)
25-1992 LL 53
- Equipment Operator (J2)
25-2089 LL 53
- Equipment Operator (J2)
25-1959(s) LL 53
- Equipment Operator (J2)
25-3523(s) LL 53
- Equipment Operator (J1)
25-1966(s) LL 54
- Equipment Operator (SJ2)
25-1994(s) LL 56

**TRIMMS
CAMP (HHH)**

- Equipment Operator (J3/L)
25-3428 LL 52
- Equipment Operator (J2)
25-1911 LL 53
- Equipment Operator (J2)
25-2083(s) LL 53
- Equipment Operator (J2)
25-2085(s) LL 53

Tok District	
Positions	Total
Full-time	22
Seasonal	16
Non Perm	0
Total	38

**DEPARTMENT OF TRANSPORTATION & PUBLIC FACILITIES
HIGHWAYS, AVIATION AND FACILITIES (408)
NORTHERN REGION HIGHWAYS & AVIATION (2068)
FY2020 GOVERNOR AMENDED BUDGET
TAZLINA DISTRICT, CHART 1D**

Eng/Arch IV
25-1914 SS 26

**TAZLINA
(HCF)**

Tazlina M&O Superintendent
25-2241 SS 21

Admin Assistant III
25-2244 GP 15

Office Assistant II
25-3490 GP 10

**ERNESTINE
(EAD)**

**NELCHINA
(HBH)**

**SLANA
(HDD)**

**TAZLINA
(HCF)**

Equipment Operator (J3/L)
25-2174 LL 52

Equipment Operator (J2)
25-2176 LL 53

Equipment Operator (J2)
25-2178 LL 53

Equipment Operator (J2)
25-2201 LL 53

Equipment Operator (J2)
25-2189(s) LL 53

Equipment Operator (SJ1)
25-2214(s) LL 58

Equipment Operator (J2)
25-2209(s) LL 53

Equipment Operator (J3/L)
25-2193 LL 52

Equipment Operator (J2)
25-2191 LL 53

Equipment Operator (J2)
25-2195 LL 53

Equipment Operator (J2)
25-2197 LL 53

**PAXSON
(HHD)**

Equipment Operator (J3/L)
25-2188 LL 52

Equipment Operator (J2)
25-1939 LL 53

Equipment Operator (J2)
25-2190 LL 53

Equipment Operator (J2)
25-2194 LL 53

Equipment Operator (J2)
25-2208(s) LL 53

Equipment Operator (J3/L)
25-2196 LL 52

Equipment Operator (J2)
25-2177 LL 53

Equipment Operator (J2)
25-2171(s) LL 53

Equipment Operator (J2)
25-2211(s) LL 53

Equipment Operator (J2)
25-2215(s) LL 53

Equipment Operator (SJ1)
25-2216(s) LL 58

Tazlina District	
Positions	Total
Full-time	25
Seasonal	12
Non Perm	6
Total	43

*All PCNs PFT unless otherwise designated
**(s) designates PPT/seasonal

Equipment Operator (F1)
25-2179 LL 51

Equipment Operator (J2)
25-2180 LL 53

Equipment Operator (J2)
25-2181 LL 53

Equipment Operator (J2)
25-2182 LL 53

Equipment Operator (J2)
25-2183 LL 53

Equipment Operator (J2)
25-2185 LL 53

Equipment Operator (J2)
25-2186 LL 53

Equipment Operator (J2)
25-2192 LL 53

Equipment Operator (J2)
25-2198(s) LL 53

Equipment Operator (SJ2)
25-2204(s) LL 56

Equipment Operator (SJ1)
25-1831(s) LL 58

Equipment Operator (SJ1)
25-2213(s) LL 58

Equipment Operator (SJ1)
25-N09047 LL 58

Equipment Operator (SJ1)
25-N09048 LL 58

Equipment Operator (SJ1)
25-N09049 LL 58

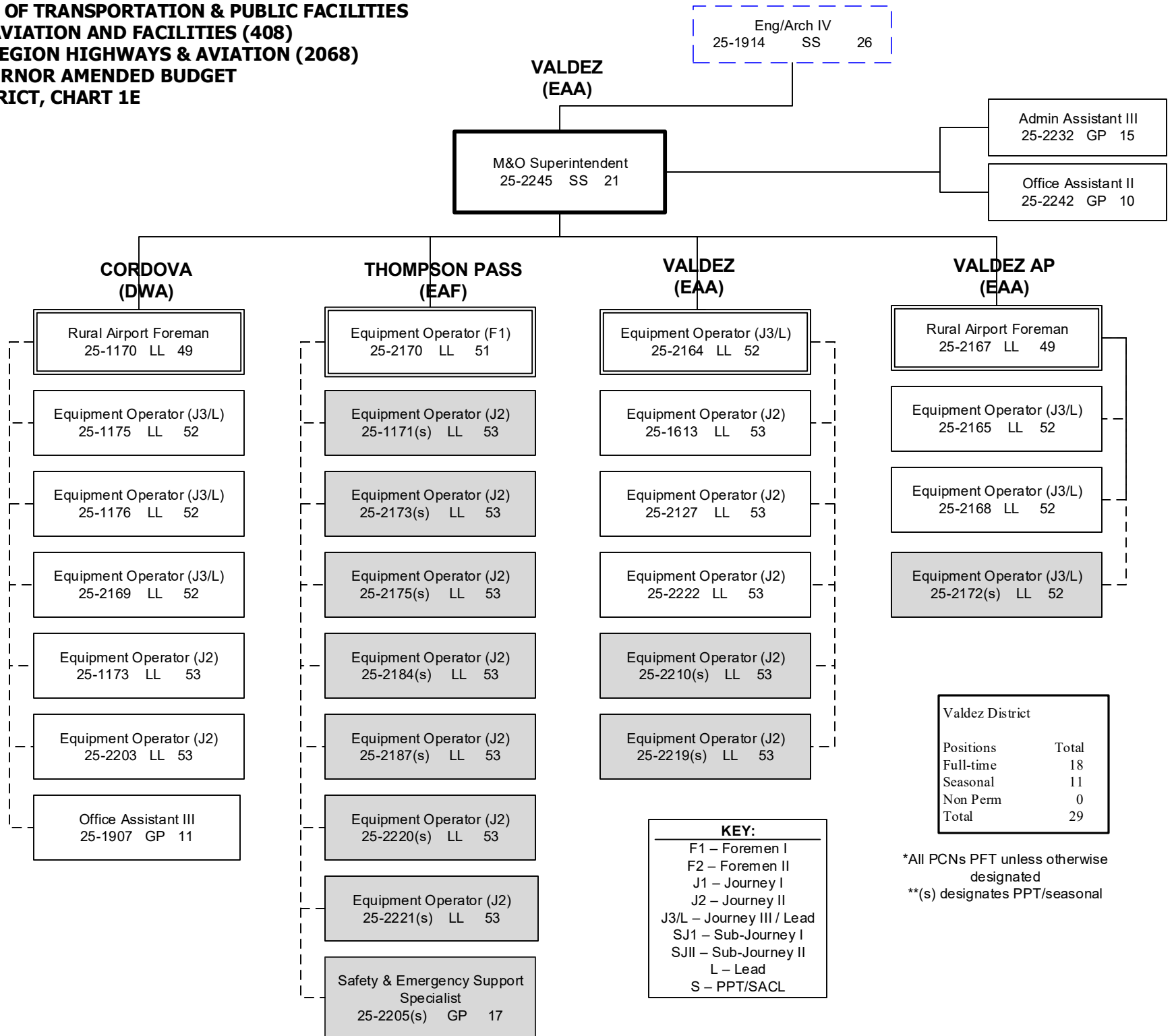
Equipment Operator (SJ1)
25-N09050 LL 58

Equipment Operator (SJ1)
25-N09051 LL 58

Equipment Operator (SJ1)
25-N09052 LL 58

KEY:
F1 – Foremen I
F2 – Foremen II
J1 – Journey I
J2 – Journey II
J3/L – Journey III / Lead
SJ1 – Sub-Journey I
SJII – Sub-Journey II
L – Lead
S – PPT/SACL

**DEPARTMENT OF TRANSPORTATION & PUBLIC FACILITIES
HIGHWAYS, AVIATION AND FACILITIES (408)
NORTHERN REGION HIGHWAYS & AVIATION (2068)
FY2020 GOVERNOR AMENDED BUDGET
VALDEZ DISTRICT, CHART 1E**



*All PCNs PFT unless otherwise designated
**(s) designates PPT/seasonal

**DEPARTMENT OF TRANSPORTATION & PUBLIC FACILITIES
HIGHWAYS, AVIATION AND FACILITIES (408)
NORTHERN REGION HIGHWAYS & AVIATION (2068)
FY2020 GOVERNOR AMENDED BUDGET
DALTON DISTRICT, CHART 2**

Eng/Arch IV
25-1914 SS 26

FAIRBANKS
(JBA)

FAIRBANKS
(JBA)

Dalton M&O Superintendent
25-1903 SS 21

Admin Assistant III
25-2073 GP 15
Office Assistant II
25-2117 GP 10

Equip Operator (F1)
25-2041 LL 51

Equip Operator (F1)
25-3661 LL 51

**FBKS/DALTON
ROVING (JCN)**

- Equip Operator (J2)
25-2026 LL 53
- Equip Operator (J2)
25-2038 LL 53
- Equip Operator (J2)
25-2045 LL 53
- Equip Operator (J2)
25-3672 LL 53
- Equip Operator (J2)
25-3662(s) LL 53
- Equip Operator (SJ2)
25-N11047 LL 56
- Equip Operator (SJ2)
25-N11048 LL 56
- Equip Operator (SJ2)
25-N11049 LL 56
- Equip Operator (SJ2)
25-N11050 LL 56
- Equip Operator (SJ2)
25-N11064 LL 56
- Equip Operator (SJ2)
25-N11065 LL 56
- Equip Operator (SJ2)
25-N11066 LL 56
- Equip Operator (SJ2)
25-N11067 LL 56

**LIVENGOOD
(JQA)**

- Equip Operator(J3/L)
25-1980 LL 52
- Equip Operator (J2)
25-1981 LL 53
- Equip Operator (J2)
25-1985 LL 53
- Equip Operator (J2)
25-2008 LL 53
- Equip Operator (J2)
25-2060 LL 53
- Equip Operator (J2)
25-3669 LL 53
- Equip Operator (SJ2/J1)
25-2055 LL 56/54

Dalton District	
Positions	Total
Full-time	61
Seasonal	3
Non Perm	8
Total	72

**JIM RIVER
(KEE)**

- Equip Operator (J3/L)
25-2032 LL 52
- Equip Operator (J2)
25-2053 LL 53
- Equip Operator (J1/J2)
25-2058 LL 54/53
- Equip Operator (J2)
25-2066 LL 53

MANLEY (JRC)

- Equip Operator (J3/L)
25-1982 LL 52
- Equip Operator (J2)
25-1960 LL 53
- Equip Operator (J1/J2)
25-1969 LL 54/53
- Equip Operator (J2)
25-1971 LL 53
- Equip Operator (SJ2/J1)
25-2069 LL 56/54

**COLDFOOT
(KRB)**

- Equip Operator (J3/L)
25-2034 LL 52
- Equip Operator (J2)
25-2042 LL 53
- Equip Operator (J2)
25-3668 LL 53
- Equip Operator (J2)
25-2086(s) LL 53

**SEVEN MILE
(JQG)**

- Equip Operator (J3/L)
25-2030 LL 52
- Equip Operator (J2)
25-2031 LL 53
- Equip Operator (J2)
25-2065 LL 53
- Equip Operator (J2)
25-2091 LL 53
- Equip Operator (SJ2/J1)
25-2059 LL 56/54

**CHANDALAR
(LEA)**

- Equip Operator (J3/L)
25-2028 LL 52
- Equip Operator (J2)
25-2051 LL 53
- Equip Operator (J2)
25-2062 LL 53
- Equip Operator (J2)
25-2070 LL 53
- Equip Operator (J2)
25-2090 LL 53
- Equip Operator (J2)
25-3664 LL 53
- Equip Operator (J2)
25-2036(s) LL 53
- Equip Operator (SJ2/J1)
25-2050 LL 56/54
- Equip Operator (SJ2/J1)
25-2206 LL 56/54

**SAG RIVER
(LED)**

- Equip Operator (J3/L)
25-2029 LL 52
- Equip Operator (J2)
25-2035 LL 53
- Equip Operator (J2)
25-2040 LL 53
- Equip Operator (J2)
25-2057 LL 53
- Equip Operator (SJ2/J1)
25-2019 LL 56/54
- Equip Operator (SJ2/J1)
25-2080 LL 56/54

KEY:

- F1 – Foremen I
- F2 – Foremen II
- J1 – Journey I
- J2 – Journey II
- J3/L – Journey III / Lead
- SJ1 – Sub-Journey I
- SJII – Sub-Journey II
- L – Lead
- S – PPT/SACL

*All PCNs PFT unless otherwise designated
**(s) designates PPT/seasonal

**DEPARTMENT OF TRANSPORTATION & PUBLIC FACILITIES
HIGHWAYS, AVIATION AND FACILITIES (408)
NORTHERN REGION HIGHWAYS & AVIATION (2068)
FY2020 GOVERNOR AMENDED BUDGET
DALTON DISTRICT, CHART 2B**

FAIRBANKS
(JBA)

Dalton M&O Superintendent
25-1903 SS 21

**BARROW
(MEA)**

**DEADHORSE
(MBC)**

Rural Airport Foreman
25-3665 LL 49

Rural Airport Foreman
25-2023 LL 49

(Work alternate
workweeks)

(Work alternate
workweeks)

Equip Op Foreman II
25-3660 LL 50

Equip Op (J3/L)
25-3356 LL 52

Maint Spec Electrician (J2)
25-2006 LL 51

Equipment Operator (J3/L)
25-2044 LL 52

Equip Op Foreman II
25-2061 LL 50

Equip Op Foreman II
25-3671 LL 50

Maint Spec Etrician (J2)
25-2056 LL 51

Equipment Operator(J3/L)
25-2046 LL 52

Equipment Operator (J3/L)
25-1965 LL 52

Equipment Operator (J3/L)
25-2047 LL 52

Equipment Operator (J3/L)
25-2043 LL 52

Equipment Operator (J3/L)
25-2064 LL 52

Equipment Operator (J3/L)
25-2048 LL 52

Equipment Operator (J3/L)
25-3670 LL 52

Equipment Operator (J3/L)
25-2068 LL 52

KEY:

- F1 – Foremen I
- F2 – Foremen II
- J1 – Journey I
- J2 – Journey II
- J3/L – Journey III / Lead
- SJ1 – Sub-Journey I
- SJII – Sub-Journey II
- L – Lead
- S – PPT/SACL

*All PCNs PFT unless otherwise
designated

**DEPARTMENT OF TRANSPORTATION & PUBLIC FACILITIES
HIGHWAYS, AVIATION AND FACILITIES (408)
NORTHERN REGION HIGHWAYS & AVIATION (2068)
FY2020 GOVERNOR AMENDED BUDGET
WESTERN DISTRICT, CHART 3**

**NOME
(HTA)**

Eng/Arch IV
25-1914 SS 26

Western M&O Superintendent
25-2162 SS 21

Admin Asst III
25-2138 GP 15

**KOTZEBUE
AIRPORT
(KAA)**

Rural Airport Foreman
25-2128 LL 49

Equipment Operator (J3/L)
25-2129 LL 52

Equipment Operator (J3/L)
25-2130 LL 52

Equipment Operator (J3/L)
25-2137 LL 52

Equipment Operator (J3/L)
25-3655 LL 52

Equipment Operator (J3/L)
25-3656 LL 52

Equipment Operator (J3/L)
25-3658 LL 52

Equipment Operator (J3/L)
25-2147 LL 52

Office Assistant III
25-2142 GP 11

**NOME
AIRPORT
(HTA)**

Rural Airport Foreman
25-2123 LL 49

Equipment Operator (J3/L)
25-1671 LL 52

Equipment Operator (J3/L)
25-2125 LL 52

Equipment Operator (J3/L)
25-2139 LL 52

Equipment Operator (J3/L)
25-2140 LL 52

Maintenance Spec Elec (J2)
25-2144 LL 51

Equipment Operator (J3/L)
25-2146 LL 52

Equipment Operator (J3/L)
25-2154 LL 52

Equipment Operator (J1/J2/J3/L)
25-3657 LL 54/53/52

Office Assistant III
25-1783 GP 11

**NOME
HIGHWAYS
(HTA)**

Equipment Operator (F1)
25-2124 LL 51

Equipment Operator (J2)
25-2126 LL 53

Equipment Operator (J2)
25-2135 LL 53

Equipment Operator (J2)
25-2136 LL 53

Equipment Operator (J2)
25-2151 LL 53

Equipment Operator (J2)
25-2152 LL 53

Equipment Operator (J1/J2)
25-2153 LL 54/53

**ST. MARY'S
(EWG)**

Equipment Operator (F1)
25-1178 LL 51

Equipment Operator (J2)
25-1181 LL 53

Equipment Operator (J1/J2)
25-1472 LL 54/53

**UNALAKLEET
AIRPORT
(HQA)**

Equipment Operator (F1)
25-2132 LL 51

Equipment Operator (J1/J2)
25-2037 LL 54/53

Equipment Operator (J2)
25-2149 LL 53

KEY:
F1 – Foremen I
F2 – Foremen II
J1 – Journey I
J2 – Journey II
J3/L – Journey III / Lead
SJ1 – Sub-Journey I
SJII – Sub-Journey II
L – Lead
S – PPT/SACL

*All PCNs PFT unless otherwise designated

Western District	
Positions	Total
Full-time	34
Seasonal	0
Non Perm	0
Total	34