

Component Detail (1077)
Department of Transportation/Public Facilities

Component: Central Region Construction and CIP Support (2293)

Non-Formula Component

RDU: Design, Engineering and Construction (526)

IRIS AP Type: T04H

	FY2018 Actuals (15158)	FY2019 Conference Committee (14954)	FY2019 Authorized (14962)	FY2019 Management Plan (14994)	FY2020 Governor (15610)	FY2020 Governor Amended (15636)	FY2020 Governor vs FY2020 Governor Amended	
1000 Personal Services	21,575.4	19,736.8	19,736.8	19,936.8	20,518.7	19,936.8	-581.9	-2.8%
2000 Travel	46.2	16.0	16.0	16.0	16.0	16.6	0.6	3.8%
3000 Services	938.1	929.0	929.0	929.0	929.0	921.9	-7.1	-0.8%
4000 Commodities	347.4	222.6	222.6	222.6	222.6	206.0	-16.6	-7.5%
5000 Capital Outlay	44.1	135.0	135.0	135.0	135.0	135.0	0.0	0.0%
7000 Grants, Benefits	0.0	0.0	0.0	0.0	0.0	0.0	0.0	0.0%
8000 Miscellaneous	0.0	0.0	0.0	0.0	0.0	0.0	0.0	0.0%
Totals	22,951.2	21,039.4	21,039.4	21,239.4	21,821.3	21,216.3	-605.0	-2.8%
<u>Funding Sources:</u>								
1004 Gen Fund (UGF)	96.3	97.7	97.7	97.7	97.7	97.7	0.0	0.0%
1007 I/A Rcpts (Other)	39.2	46.2	46.2	46.2	47.8	46.2	-1.6	-3.3%
1061 CIP Rcpts (Other)	22,815.7	20,895.5	20,895.5	21,095.5	21,675.8	21,072.4	-603.4	-2.8%
<u>Funding Totals:</u>								
Unrestricted General (UGF)	96.3	97.7	97.7	97.7	97.7	97.7	0.0	0.0%
Designated General (DGF)	0.0	0.0	0.0	0.0	0.0	0.0	0.0	0.0%
Other	22,854.9	20,941.7	20,941.7	21,141.7	21,723.6	21,118.6	-605.0	-2.8%
Federal	0.0	0.0	0.0	0.0	0.0	0.0	0.0	0.0%
<u>Positions:</u>								
Permanent Full Time	110	110	110	111	111	111	0	0.0%
Permanent Part Time	41	41	41	41	41	41	0	0.0%
Non Permanent	19	19	19	19	19	19	0	0.0%

Change Record Detail - Multiple Scenarios with Descriptions (294)
Department of Transportation/Public Facilities

Component: Central Region Construction and CIP Support (2293)
RDU: Design, Engineering and Construction (526)

Scenario/Change Record Title	Trans Type	Totals	Personal Services	Travel	Services	Commodities	Capital Outlay	Grants, Benefits	Miscellaneous	PFT	Positions PPT	NP
***** Changes From FY2019 Conference Committee To FY2019 Authorized *****												
FY2019 Conference Committee												
	ConfCom	21,039.4	19,736.8	16.0	929.0	222.6	135.0	0.0	0.0	110	41	19
1004 Gen Fund		97.7										
1007 I/A Rcpts		46.2										
1061 CIP Rcpts		20,895.5										
Subtotal		21,039.4	19,736.8	16.0	929.0	222.6	135.0	0.0	0.0	110	41	19
***** Changes From FY2019 Authorized To FY2019 Management Plan *****												
Transfer Engineering Assistant I/II (25-0653) from Facilities Services for Project Support												
	Trin	0.0	0.0	0.0	0.0	0.0	0.0	0.0	0.0	1	0	0
Transfer full-time Engineering Assistant I/II (25-0653), range 17/19, GP (General), located in Anchorage to Central Region Construction and CIP Support without personal services authority. This position will function as a project engineer on minor construction projects and provide support with large size and complex construction projects allowing the region to efficiently manage the construction season schedule.												
Transfer from Southcoast Region Construction to Comply with Vacancy Factor Guidelines												
	Trin	200.0	200.0	0.0	0.0	0.0	0.0	0.0	0.0	0	0	0
1061 CIP Rcpts		200.0										
Transfer from the Southcoast Region Construction component to the Central Region Construction and CIP Support component to bring personal services within vacancy factor guidelines. Authority is available to transfer due to high turnover and hiring staff at lower step placement than previously budgeted.												
Transfer Engineering Assistant III (25-0648) to Central Design and Engineering Services												
	Trout	0.0	0.0	0.0	0.0	0.0	0.0	0.0	0.0	-1	0	0
Exchanging two positions between the Central Design and Engineering Services (D&ES) component and the Central Region Construction and CIP Support (C&CS) component allows the department to realign duties and increase operational efficiency.												
Transfer to D&ES-Engineering Assistant III (25-0648), range 21, from C&CS Transfer to C&CS-Engineering Assistant III (25-0633), range 21, from D&ES												
Transfer Engineering Assistant III (25-0633) from Central Design and Engineering Services												
	Trin	0.0	0.0	0.0	0.0	0.0	0.0	0.0	0.0	1	0	0
Exchanging two positions between the Central Design and Engineering Services (D&ES) component and the Central Region Construction and CIP Support (C&CS) component allows the department to realign duties and increase operational efficiency.												
Transfer to D&ES-Engineering Assistant III (25-0648), range 21, from C&CS Transfer to C&CS-Engineering Assistant III (25-0633), range 21, from D&ES												
Subtotal		21,239.4	19,936.8	16.0	929.0	222.6	135.0	0.0	0.0	111	41	19
***** Changes From FY2019 Management Plan To FY2020 Governor Amended *****												

Change Record Detail - Multiple Scenarios with Descriptions (294)
Department of Transportation/Public Facilities

Component: Central Region Construction and CIP Support (2293)

RDU: Design, Engineering and Construction (526)

Scenario/Change Record Title	Trans Type	Totals	Personal Services	Travel	Services	Commodities	Capital Outlay	Grants, Benefits	Miscellaneous	Positions		NP
										PFT	PPT	
Executive Branch 50% Travel Reduction												
1061 CIP Rcpts	Dec	-23.1	0.0	-16.0	-7.1	0.0	0.0	0.0	0.0	0	0	0
50% executive branch travel reduction based on actual costs of travel in FY2018. Exceptions were made to travel essential to public safety, health, and disaster management.												
Align Travel Authorization with Historical Average Expenditures												
	LIT	0.0	0.0	16.6	0.0	-16.6	0.0	0.0	0.0	0	0	0
Totals		21,216.3	19,936.8	16.6	921.9	206.0	135.0	0.0	0.0	111	41	19

Personal Services Expenditure Detail (1445)

Department of Transportation/Public Facilities

Scenario: FY2020 Governor Amended (15636)

Component: Central Region Construction and CIP Support (2293)

RDU: Design, Engineering and Construction (526)

Status	PCN	Tracking ID	Job Class Title	Time Status	Retire Code	Barg Unit	Location	Salary Sched	Range / Steps	Comp Months	Split / Count	Annual Salaries	COLA	Premium Pay	Annual Benefits	Total Costs	UGF Amount
25-0192		18772	Engineer/Architect III	FT	A	SS	Anchorage	200	25 F	12.0		121,452	0	0	63,537	184,989	
25-0373		18916	Division Director	FT	A	XE	Anchorage	N00	27 K / L	12.0		134,130	0	0	67,984	202,114	18,946
25-0375		18918	Engineer/Architect III	FT	A	SS	Anchorage	200	25 P	12.0		155,626	0	0	74,723	230,349	
25-0376		18919	Engineer/Architect IV	FT	A	SS	Anchorage	200	26 O / P	12.0		160,048	0	0	76,080	236,128	
25-0379		18922	Procurement Spec II	FT	A	SS	Anchorage	200	16 B / C	12.0		57,911	0	0	40,147	98,058	
25-0391		18931	Engineer/Architect IV	FT	A	SS	Anchorage	200	26 N	12.0		149,086	0	0	72,717	221,803	
25-0394		18932	Procurement Spec I	FT	A	GP	Anchorage	200	14 A	12.0		43,332	1,778	0	34,441	79,551	
25-0395		18933	Procurement Spec I	FT	A	GP	Anchorage	200	14 C	12.0		46,320	1,901	0	35,541	83,762	
25-0398		18935	Accountant IV	FT	A	SS	Anchorage	200	20 E / F	12.0		84,594	0	0	49,969	134,563	
25-0403		18938	Engineering Assistant II	FT	A	GG	Anchorage	200	19 O	12.0		93,003	4,993	28,638	63,266	189,900	
25-0405		18940	Engineer/Architect III	FT	A	SS	Anchorage	200	25 K	12.0		129,456	0	0	66,483	195,939	
25-0408		18943	Engineer/Architect V	FT	A	SS	Anchorage	200	27 S	12.0		179,796	0	0	82,138	261,934	
25-0411		18945	Accounting Tech II	FT	A	GP	Anchorage	200	14 D / E	12.0		49,488	2,031	0	36,707	88,226	
25-0415		18949	Engineer/Architect III	FT	A	SS	Anchorage	200	25 L / M	12.0		137,286	0	0	69,096	206,382	
25-0418		18952	Office Assistant II	FT	A	GP	Anchorage	200	10 B / C	12.0		35,571	1,460	0	31,584	68,615	
25-0430		18962	Tech Eng I / Architect I	FT	A	GP	Anchorage	200	24 O	12.0		131,151	5,249	0	66,767	203,167	
25-0434		18965	Accounting Tech III	FT	A	GP	Anchorage	200	16 C / D	12.0		54,294	2,228	0	38,476	94,998	
25-0440		18970	Engineer/Architect III	FT	A	SS	Anchorage	200	25 M / N	12.0		143,323	0	0	70,949	214,272	
25-0441		18971	Administrative Assistant I	FT	A	GP	Anchorage	200	12 A	12.0		38,124	1,565	0	32,524	72,213	
25-0445		18974	Office Assistant II	FT	A	GP	Anchorage	200	10 A	12.0		33,828	1,388	0	30,942	66,158	
25-0446		18975	Engineering Assistant III	FT	A	GP	Anchorage	200	21 L	12.0		95,340	5,117	29,334	64,383	194,174	
25-0447		18976	Accounting Tech III	FT	A	GP	Anchorage	200	16 B / C	12.0		51,843	2,128	0	37,574	91,545	
25-0455		18980	Tech Eng I / Architect I	FT	A	GP	Anchorage	200	24 G	12.0		105,756	4,341	0	57,419	167,516	
25-0461		18983	Office Assistant II	FT	A	GP	Anchorage	200	10 K	12.0		43,668	1,792	0	34,565	80,025	
25-0465		18987	Engineering Assistant III	FT	A	GP	Anchorage	200	21 G / J	12.0		88,386	4,712	26,412	60,747	180,257	
25-0494		19011	Admin Asst III	FT	A	GP	Anchorage	200	15 M / N	12.0		66,623	2,734	0	43,014	112,371	
25-0502		19019	Engineer/Architect III	FT	A	SS	Anchorage	200	25 C	12.0		109,308	0	0	59,067	168,375	
25-0506		19023	Engineering Associate	FT	A	GP	Anchorage	200	21 M	12.0		98,913	5,288	30,458	66,112	200,771	
25-0508		19025	Engineering Assistant III	FT	A	GP	Anchorage	200	21 N / O	12.0		104,985	4,309	0	57,135	166,429	

Note: If a position is split, an asterisk (*) will appear in the Split/Count column. If the split position is also counted in the component, two asterisks (**) will appear in this column. [No valid job title] appearing in the Job Class Title indicates that the PCN has an invalid class code or invalid range for the class code effective date of this scenario.

Personal Services Expenditure Detail (1445)

Department of Transportation/Public Facilities

Scenario: FY2020 Governor Amended (15636)

Component: Central Region Construction and CIP Support (2293)

RDU: Design, Engineering and Construction (526)

Status	PCN	Tracking ID	Job Class Title	Time Status	Retire Code	Barg Unit	Location	Salary Sched	Range / Steps	Comp Months	Split / Count	Annual Salaries	COLA	Premium Pay	Annual Benefits	Total Costs	UGF Amount
25-0509		19026	Engineering Associate	FT	A	GP	Anchorage	200	21 M	12.0		98,913	5,288	30,458	66,112	200,771	
25-0510		19027	Engineering Assistant III	FT	A	GP	Anchorage	200	21 R	12.0		118,908	6,097	36,615	74,352	235,972	
25-0512		19029	Engineering Assistant III	FT	A	GP	Anchorage	200	21 K	12.0		92,340	4,956	28,410	62,938	188,644	
25-0513		19030	Engineering Assistant III	FT	A	GP	Anchorage	200	21 L / M	12.0		95,469	5,122	29,334	64,430	194,355	
25-0514		19031	Engineering Associate	FT	A	GP	Anchorage	200	21 L / M	12.0		96,243	5,154	29,334	64,715	195,446	
25-0516		19033	Engineering Assistant II	FT	A	GP	Anchorage	200	19 D / E	12.0		68,959	3,690	20,940	51,582	145,171	
25-0517		19034	Engineering Assistant II	FT	A	GP	Anchorage	200	19 F / G	12.0		73,046	3,917	22,392	53,621	152,976	
25-0518		19035	Engineering Associate	FT	A	GP	Anchorage	200	21 K / L	12.0		92,590	4,966	28,410	63,030	188,996	
25-0519		19036	Engineering Assistant II	FT	A	GP	Anchorage	200	19 M	12.0		86,402	4,638	26,605	60,088	177,733	
25-0520		19037	Engineering Assistant II	FT	A	GP	Anchorage	200	19 D / E	12.0		68,959	3,797	23,557	52,545	148,858	
25-0521		19038	Engineering Assistant III	FT	A	GP	Anchorage	200	21 J	12.0		89,436	4,800	27,516	61,540	183,292	
25-0522		19039	Engineering Assistant II	FT	A	GP	Anchorage	200	19 J	12.0		78,120	4,439	30,045	58,306	170,910	
25-0523		19040	Engineering Assistant II	FT	A	GP	Anchorage	200	19 A	12.0		61,416	3,296	18,900	48,055	131,667	
25-0524		19041	Engineering Assistant II	FT	A	GP	Anchorage	200	19 J	12.0		78,120	4,316	27,040	57,200	166,676	
25-0525		19042	Engineering Assistant II	FT	A	GP	Anchorage	200	19 R	12.0		103,864	5,326	31,982	68,315	209,487	
25-0526		19043	Engineering Assistant II	FT	A	GP	Anchorage	200	19 J	12.0		78,120	4,316	27,040	57,200	166,676	
25-0527		19044	Engineering Assistant II	FT	A	GP	Anchorage	200	19 J / K	12.0		78,756	4,342	27,040	57,434	167,572	
25-0528		19045	Engineering Assistant II	FT	A	GP	Anchorage	200	19 M	12.0		86,402	4,775	29,931	61,313	182,421	
25-0532		19049	Engineering Assistant II	FT	A	GP	Anchorage	200	19 G	12.0		74,988	4,143	25,960	55,649	160,740	
25-0533		19050	Engineering Assistant II	FT	A	GP	Anchorage	200	19 F / G	12.0		72,953	4,028	25,191	54,617	156,789	
25-0534		19051	Engineering Assistant II	FT	A	GP	Anchorage	200	19 K	12.0		80,664	4,457	27,924	58,462	171,507	
25-0535		19052	Engineering Assistant II	FT	A	GP	Anchorage	200	19 K / L	12.0		82,517	4,533	27,924	59,144	174,118	
25-0536		19053	Engineering Assistant II	FT	A	GP	Anchorage	200	19 L	12.0		83,280	4,601	28,829	59,758	176,468	
25-0539		19055	Eng Tech Journey	PT	A	LL	Anchorage	2AA	54 L	9.0		45,840	0	19,838	37,966	103,644	
25-0540		19056	Eng Tech Journey	PT	A	LL	Anchorage	2AA	54 K	9.0		44,186	0	19,122	37,093	100,401	
25-0542		19058	Eng Tech Journey	PT	A	LL	Anchorage	2AA	54 F	9.0		41,051	0	17,766	35,440	94,257	
25-0547		19062	Eng Tech Sub Journey II	PT	A	LL	Anchorage	2AA	57 D / E	6.0		22,175	0	14,067	22,534	58,776	
25-0548		19063	Eng Tech Sub Journey II	PT	A	LL	Anchorage	2AA	57 C	7.5		26,177	0	13,594	26,131	65,902	
25-0552		19066	Eng Tech Journey	PT	A	LL	Anchorage	2AA	54 M	9.0		47,555	0	20,580	38,870	107,005	

Note: If a position is split, an asterisk (*) will appear in the Split/Count column. If the split position is also counted in the component, two asterisks (**) will appear in this column. [No valid job title] appearing in the Job Class Title indicates that the PCN has an invalid class code or invalid range for the class code effective date of this scenario.

Personal Services Expenditure Detail (1445)

Department of Transportation/Public Facilities

Scenario: FY2020 Governor Amended (15636)
Component: Central Region Construction and CIP Support (2293)
RDU: Design, Engineering and Construction (526)

Status	PCN	Tracking ID	Job Class Title	Time Status	Retire Code	Barg Unit	Location	Salary Sched	Range / Steps	Comp Months	Split / Count	Annual Salaries	COLA	Premium Pay	Annual Benefits	Total Costs	UGF Amount
25-0553	19067	Eng Tech Journey	PT	A	LL	Soldotna	2CC 54	K / L	9.0			47,030	0	19,757	38,374	105,161	
25-0554	19068	Eng Tech Journey	PT	A	LL	Anchorage	2AA 54	K / L	9.0			45,013	0	21,247	38,180	104,440	
25-0555	19069	Eng Tech Journey	PT	A	LL	Anchorage	2AA 54	K	9.0			44,186	0	19,122	37,093	100,401	
25-0559	19070	Eng Tech Journey	PT	A	LL	Wasilla	2BB 54	L / M	9.0			47,621	0	20,155	38,738	106,514	
25-0560	19071	Eng Tech Journey	PT	A	LL	Anchorage	2AA 54	K / L	9.0			45,197	0	19,122	37,466	101,785	
25-0562	19073	Eng Tech Sub Journey III	PT	A	LL	Anchorage	2AA 55	E / F	7.5			31,503	0	16,247	29,068	76,818	
25-0563	19074	Eng Tech Journey	PT	A	LL	Anchorage	2AA 54	K / L	9.0			45,288	0	19,122	37,499	101,909	
25-0564	19075	Eng Tech Journey	PT	A	LL	Anchorage	2AA 54	M	9.0			47,555	0	18,294	38,029	103,878	
25-0570	19078	Eng Tech Sub Journey III	PT	A	LL	Anchorage	2AA 55	F	7.5			32,377	0	16,814	29,599	78,790	
25-0571	19079	Eng Tech Sub Journey III	PT	A	LL	Anchorage	2AA 55	F	7.5			32,377	0	16,814	29,599	78,790	
25-0572	19080	Eng Tech Sub Journey III	PT	A	LL	Wasilla	2BB 55	K	7.5			35,457	0	18,414	31,321	85,192	
25-0574	19081	Eng Tech Sub Journey III	PT	A	LL	Anchorage	2AA 55	E / F	7.5			32,231	0	16,247	29,336	77,814	
25-0577	19082	Eng Tech Sub Journey III	PT	A	LL	Anchorage	2AA 55	F	7.5			32,377	0	16,814	29,599	78,790	
25-0579	19083	Engineering Assistant III	FT	A	GP	Anchorage	200 21	J / K	12.0			89,799	4,956	30,955	62,940	188,650	
25-0581	19085	Engineering Assistant III	FT	A	GP	Anchorage	200 21	F / G	12.0			85,493	3,509	0	49,960	138,962	
25-0586	19088	Eng Tech Sub Journey II	PT	A	LL	Anchorage	2AA 57	A	6.0			19,548	0	12,690	21,060	53,298	
25-0587	19089	Eng Tech Sub Journey II	PT	A	LL	Anchorage	2AA 57	C	6.0			20,942	0	13,594	21,906	56,442	
25-0591	19092	Eng Tech Sub Journey II	PT	A	LL	Wasilla	2BB 57	C	6.0			21,399	0	13,891	22,183	57,473	
25-0592	19093	Eng Tech Sub Journey II	PT	A	LL	Anchorage	2AA 57	B / C	6.0			20,765	0	13,135	21,672	55,572	
25-0593	19094	Eng Tech Sub Journey II	PT	A	LL	Anchorage	2AA 57	B	6.0			20,235	0	13,135	21,477	54,847	
25-0594	19095	Eng Tech Sub Journey II	PT	A	LL	Wasilla	2BB 57	D	6.0			22,127	0	14,364	22,625	59,116	
25-0595	19096	Eng Tech Sub Journey II	PT	A	LL	Wasilla	2BB 57	D / E	6.0			22,506	0	14,364	22,765	59,635	
25-0601	19099	Eng Tech Sub Journey II	PT	A	LL	Anchorage	2AA 57	C	6.0			20,942	0	13,594	21,906	56,442	
25-0604	19102	Eng Tech Sub Journey III	PT	A	LL	Anchorage	2AA 55	F	7.5			32,377	0	16,814	29,599	78,790	
25-0606	19104	Eng Tech Sub Journey III	PT	A	LL	Anchorage	2AA 55	K / L	7.5			36,072	0	18,096	31,431	85,599	
25-0609	19105	Procurement Spec III	FT	A	SS	Anchorage	200 18	A / B	12.0			65,826	0	0	43,061	108,887	
25-0625	19117	Engineering Associate	FT	A	GP	Anchorage	200 21	N	12.0			102,623	4,212	0	56,266	163,101	
25-0633	19125	Engineering Assistant III	FT	A	GP	Anchorage	200 21	G / J	12.0			86,136	3,942	9,904	53,843	153,825	
25-0641	19132	Engineering Assistant II	FT	A	GP	Anchorage	200 19	D	12.0			68,064	3,760	23,557	52,216	147,597	

Note: If a position is split, an asterisk (*) will appear in the Split/Count column. If the split position is also counted in the component, two asterisks (**) will appear in this column.
 [No valid job title] appearing in the Job Class Title indicates that the PCN has an invalid class code or invalid range for the class code effective date of this scenario.

Personal Services Expenditure Detail (1445)

Department of Transportation/Public Facilities

Scenario: FY2020 Governor Amended (15636)

Component: Central Region Construction and CIP Support (2293)

RDU: Design, Engineering and Construction (526)

Status	PCN	Tracking ID	Job Class Title	Time Status	Retire Code	Barg Unit	Location	Salary Sched	Range / Steps	Comp Months	Split / Count	Annual Salaries	COLA	Premium Pay	Annual Benefits	Total Costs	UGF Amount
25-0642	19133	Engineering Assistant II	FT	A	GP	Anchorage	200	19	E / F	12.0		71,384	3,927	24,306	53,714	153,331	
25-0650	19139	Engineering Assistant II	FT	A	GP	Anchorage	200	19	C / D	12.0		66,330	3,551	20,190	50,338	140,409	
25-0653	19142	Engineering Assistant II	FT	A	GP	Anchorage	200	19	A	12.0		61,416	2,618	2,362	41,967	108,363	
25-0654	19143	Engineering Assistant II	FT	A	GP	Anchorage	200	19	K	12.0		80,664	4,584	31,027	59,604	175,879	
25-0666	19153	Offset Dup Mach Op	FT	A	GP	Anchorage	200	12	J / K	12.0		48,604	1,995	0	36,381	86,980	
25-0669	19156	Engineer/Architect IV	FT	A	SS	Anchorage	200	26	N	12.0		149,086	0	0	72,717	221,803	
25-0674	19161	Engineering Assistant III	FT	A	GP	Anchorage	200	21	K / L	12.0		92,715	5,263	35,512	65,691	199,181	
25-0677	19164	Procurement Spec V	FT	A	SS	Anchorage	200	21	D / E	12.0		88,380	0	0	51,363	139,743	
25-0678	19165	Engineer/Architect II	FT	A	SS	Anchorage	200	23	Q	12.0		140,608	0	0	70,116	210,724	
25-0681	19166	Engineering Assistant III	FT	A	GP	Anchorage	200	21	O	12.0		106,473	5,781	40,982	71,876	225,112	
25-0684	19168	Engineering Assistant II	FT	A	GP	Anchorage	200	19	E / F	12.0		70,532	4,003	27,007	54,394	155,936	
25-0688	19172	Engineering Assistant III	FT	A	GP	Anchorage	200	21	M	12.0		98,913	5,370	38,072	68,664	211,019	
25-0693	19175	Engineering Assistant II	FT	A	GP	Anchorage	200	19	K / L	12.0		82,735	4,669	31,027	60,366	178,797	
25-0694	19176	Engineering Assistant III	FT	A	GP	Anchorage	200	21	G	12.0		85,836	4,878	33,015	62,239	185,968	
25-0696	19178	Engineering Assistant II	FT	A	GP	Anchorage	200	19	D / E	12.0		68,243	3,875	26,175	53,246	151,539	
25-0701	19180	Engineering Assistant II	FT	A	GP	Anchorage	200	19	D / E	12.0		68,959	3,905	26,175	53,509	152,548	
25-0731	19199	Engineering Assistant III	FT	A	GG	Anchorage	200	21	N	12.0		102,128	5,545	39,310	70,030	217,013	
25-0735	19203	Engineering Assistant II	FT	A	GP	Anchorage	200	19	F / G	12.0		73,878	4,181	27,990	55,988	162,037	
25-0737	19205	Engineering Assistant II	FT	A	GP	Anchorage	200	19	B / C	12.0		63,604	3,513	21,984	49,995	139,096	
25-0758	19221	Engineering Associate	FT	A	GP	Anchorage	200	21	L	12.0		95,340	5,267	33,000	65,732	199,339	
25-0759	19222	Engineering Assistant III	FT	A	GP	Anchorage	200	21	M	12.0		98,913	5,221	34,265	67,496	205,895	
25-0760	19223	Engineering Assistant II	FT	A	GP	Anchorage	200	19	K	12.0		80,664	4,457	27,924	58,462	171,507	
25-0763	19226	Offset Dup Mach Op	FT	A	GP	Anchorage	200	12	K / L	12.0		50,456	2,071	0	37,063	89,590	
25-0767	19229	Engineering Assistant II	FT	A	GP	Anchorage	200	19	C / D	12.0		67,962	3,722	22,713	51,868	146,265	
25-0795	19242	Engineer/Architect II	FT	A	SS	Anchorage	200	23	L	12.0		116,980	0	0	61,891	178,871	
25-0799	19245	Engineering Assistant III	FT	A	GP	Anchorage	200	21	K / L	12.0		92,715	5,117	31,961	64,384	194,177	
25-0801	19247	Accountant III	FT	A	SS	Anchorage	200	18	B / C	12.0		66,566	0	0	43,333	109,899	
25-0803	19249	Procurement Spec II	FT	A	GP	Anchorage	200	16	C / D	12.0		55,213	2,266	0	38,814	96,293	
25-0804	19250	Engineering Assistant II	FT	A	GP	Anchorage	200	19	C / D	12.0		66,024	3,746	25,237	52,083	147,090	

Note: If a position is split, an asterisk (*) will appear in the Split/Count column. If the split position is also counted in the component, two asterisks (**) will appear in this column. [No valid job title] appearing in the Job Class Title indicates that the PCN has an invalid class code or invalid range for the class code effective date of this scenario.

Personal Services Expenditure Detail (1445)

Department of Transportation/Public Facilities

Scenario: FY2020 Governor Amended (15636)
Component: Central Region Construction and CIP Support (2293)
RDU: Design, Engineering and Construction (526)

Status	PCN	Tracking ID	Job Class Title	Time Status	Retire Code	Barg Unit	Location	Salary Sched	Range / Steps	Comp Months	Split / Count	Annual Salaries	COLA	Premium Pay	Annual Benefits	Total Costs	UGF Amount
25-0807	19252	Engineering Assistant II	FT	A	GP	Anchorage	200	19	J / K	12.0		78,650	4,461	30,045	58,501	171,657	
25-0809	19254	Engineering Assistant II	FT	A	GP	Anchorage	200	19	K	12.0		80,664	4,457	27,924	58,462	171,507	
25-0811	19256	Engineering Assistant II	FT	A	GP	Anchorage	200	19	J	12.0		78,120	4,439	30,045	58,306	170,910	
25-0814	19259	Engineering Assistant II	FT	A	GP	Anchorage	200	19	C / D	12.0		66,636	3,771	25,237	52,309	147,953	
25-0815	19260	Engineering Assistant II	FT	A	GP	Anchorage	200	19	G / J	12.0		77,207	4,353	28,845	57,528	167,933	
25-0822	19264	Engineering Assistant II	FT	A	GP	Anchorage	200	19	G	12.0		74,988	4,262	28,845	56,711	164,806	
25-0828	19267	Eng Tech Journey	PT	A	LL	Anchorage	2AA	54	L	9.0		45,840	0	22,042	38,777	106,659	
25-0829	19268	Eng Tech Journey	PT	A	LL	Wasilla	2BB	54	J	9.0		43,328	0	18,751	36,641	98,720	
25-0832	19269	Eng Tech Journey	PT	A	LL	Anchorage	2AA	54	F	9.0		41,051	0	17,766	35,440	94,257	
25-0833	19270	Eng Tech Journey	PT	A	LL	Anchorage	2AA	54	K	9.0		44,186	0	19,122	37,093	100,401	
25-0836	19271	Eng Tech Sub Journey III	PT	A	LL	Wasilla	2BB	55	F / J	7.5		33,229	0	17,131	30,029	80,389	
25-0857	19281	Accountant III	FT	A	SS	Anchorage	200	18	F	12.0		75,672	0	0	46,685	122,357	
25-0870	19289	Eng Tech Sub Journey II	PT	A	LL	Anchorage	2AA	57	B / C	6.0		20,883	0	13,135	21,715	55,733	
25-0875	19290	Eng Tech Sub Journey II	PT	A	LL	Anchorage	2AA	57	F	6.0		23,208	0	15,066	23,282	61,556	
25-0877	19291	Eng Tech Sub Journey II	PT	A	LL	Anchorage	2AA	57	D	6.0		21,669	0	14,067	22,348	58,084	
25-0896	19300	Eng Tech Sub Journey III	PT	A	LL	Anchorage	2AA	55	F	7.5		32,377	0	16,814	29,599	78,790	
25-0907	19302	Eng Tech Sub Journey II	PT	A	LL	Anchorage	2AA	57	B	6.0		20,235	0	13,135	21,477	54,847	
25-0909	19303	Engineering Assistant II	FT	A	GP	Anchorage	200	19	G	12.0		74,988	3,078	0	46,093	124,159	
25-0956	19324	Eng Tech Sub Journey II	PT	A	LL	Anchorage	2AA	57	D / E	7.5		27,909	0	14,067	26,943	68,919	
25-0957	19325	Eng Tech Sub Journey II	PT	A	LL	Anchorage	2AA	57	B	7.5		23,717	0	13,135	25,057	61,909	
25-3399	21137	Engineering Assistant III	FT	A	GP	Anchorage	200	21	F / G	12.0		85,264	4,811	31,957	61,639	183,671	
25-3400	21138	Engineer/Architect II	FT	A	SS	Anchorage	200	23	J	12.0		109,200	0	0	59,027	168,227	
25-3403	21141	Engineering Assistant II	FT	A	GP	Anchorage	200	19	F	12.0		72,768	4,021	25,191	54,549	156,529	
25-3404	21142	Engineering Assistant II	FT	A	GP	Anchorage	200	19	G	12.0		74,988	4,143	25,960	55,649	160,740	
25-3501	21231	Administrative Assistant II	FT	A	GP	Anchorage	200	14	A	12.0		43,332	1,778	0	34,441	79,551	
25-3503	21233	Engineering Assistant II	FT	A	GP	Anchorage	200	19	L / M	12.0		83,619	4,615	28,829	59,882	176,945	
25-3504	21234	Engineering Assistant II	FT	A	GP	Anchorage	200	19	D	12.0		68,064	3,760	23,557	52,216	147,597	
25-3505	21235	Engineering Assistant II	FT	A	GP	Anchorage	200	19	N / O	12.0		92,187	5,058	31,052	63,855	192,152	
25-3506	21236	Engineering Assistant II	FT	A	GP	Anchorage	200	19	C / D	12.0		66,738	3,671	22,713	51,417	144,539	

Note: If a position is split, an asterisk (*) will appear in the Split/Count column. If the split position is also counted in the component, two asterisks (**) will appear in this column.
 [No valid job title] appearing in the Job Class Title indicates that the PCN has an invalid class code or invalid range for the class code effective date of this scenario.

Personal Services Expenditure Detail (1445)

Department of Transportation/Public Facilities

Scenario: FY2020 Governor Amended (15636)

Component: Central Region Construction and CIP Support (2293)

RDU: Design, Engineering and Construction (526)

Status	PCN	Tracking ID	Job Class Title	Time Status	Retire Code	Barg Unit	Location	Salary Sched	Range / Steps	Comp Months	Split / Count	Annual Salaries	COLA	Premium Pay	Annual Benefits	Total Costs	UGF Amount
25-3507		21237	Engineering Assistant II	FT	A	GP	Anchorage	200	19 E / F	12.0		71,490	3,821	21,606	52,759	149,676	
25-3508		21238	Engineering Assistant II	FT	A	GP	Anchorage	200	19 J	12.0		78,120	4,316	27,040	57,200	166,676	
25-3509		21239	Engineering Assistant II	FT	A	GP	Anchorage	200	19 G	12.0		74,988	4,143	25,960	55,649	160,740	
25-3513		21243	Engineering Assistant III	FT	A	GP	Anchorage	200	21 L / M	12.0		95,469	5,273	33,000	65,780	199,522	
25-3514		21244	Engineering Assistant III	FT	A	GP	Anchorage	200	21 C	12.0		74,988	4,143	25,960	55,649	160,740	
25-3515		21245	Engineering Assistant III	FT	A	GP	Anchorage	200	21 M	12.0		98,913	5,370	38,072	68,664	211,019	
25-3550		21274	Engineering Assistant III	FT	A	GP	Anchorage	200	21 K	12.0		92,340	5,102	31,961	64,246	193,649	
25-IN0916		21502	Eng Tech Sub Journey I	NP	N	LL	Anchorage	2AA	59 A	4.0		11,604	0	6,277	2,248	20,129	
25-IN0917		21503	Eng Tech Sub Journey II	NP	N	LL	Anchorage	2AA	57 A	4.0		13,032	0	7,050	2,524	22,606	
25-IN0918		21504	Eng Tech Sub Journey II	NP	N	LL	Anchorage	2AA	57 A	4.0		13,032	0	8,460	2,702	24,194	
25-IN0919		21505	Eng Tech Sub Journey I	NP	N	LL	Anchorage	2AA	59 A	4.0		11,604	0	7,533	2,406	21,543	
25-IN0920		21506	Eng Tech Sub Journey II	NP	N	LL	Anchorage	2AA	57 A	4.0		13,032	0	8,460	2,702	24,194	
25-IN0921		21507	Eng Tech Sub Journey II	NP	N	LL	Anchorage	2AA	57 A	6.0		19,548	0	8,460	3,521	31,529	
25-IN0922		21508	Eng Tech Sub Journey II	NP	N	LL	Anchorage	2AA	57 A	6.0		19,548	0	8,460	3,521	31,529	
25-IN0923		21509	Eng Tech Sub Journey I	NP	N	LL	Anchorage	2AA	59 A	6.0		17,406	0	7,533	3,135	28,074	
25-IN0924		21510	Eng Tech Sub Journey II	NP	N	LL	Anchorage	2AA	57 A	6.0		19,548	0	8,460	3,521	31,529	
25-IN0925		21511	Eng Tech Sub Journey II	NP	N	LL	Anchorage	2AA	57 A	6.0		19,548	0	7,050	3,343	29,941	
25-N09022		21512	Eng Tech Sub Journey I	NP	N	LL	Wasilla	2BB	59 A	4.0		11,909	0	7,731	2,469	22,109	
25-N09023		21513	Eng Tech Sub Journey I	NP	N	LL	Anchorage	2AA	59 A	4.0		11,604	0	6,277	2,248	20,129	
25-N09024		21514	Eng Tech Sub Journey I	NP	N	LL	Wasilla	2BB	59 A	4.0		11,909	0	7,731	2,469	22,109	
25-N09085		21515	Eng Tech Sub Journey I	NP	N	LL	Anchorage	2AA	59 A	4.0		11,604	0	6,277	2,248	20,129	
25-N09087		21517	Eng Tech Sub Journey I	NP	N	LL	Anchorage	2AA	59 A	4.0		11,604	0	6,277	2,248	20,129	
25-N09088		21518	Eng Tech Sub Journey I	NP	N	LL	Anchorage	2AA	59 A	4.0		11,604	0	6,277	2,248	20,129	
25-N09089		21519	Eng Tech Sub Journey I	NP	N	LL	Anchorage	2AA	59 A	4.0		11,604	0	6,277	2,248	20,129	
25-N09090		21520	Eng Tech Sub Journey I	NP	N	LL	Anchorage	2AA	59 A	4.0		11,604	0	6,277	2,248	20,129	

Note: If a position is split, an asterisk (*) will appear in the Split/Count column. If the split position is also counted in the component, two asterisks (**) will appear in this column. [No valid job title] appearing in the Job Class Title indicates that the PCN has an invalid class code or invalid range for the class code effective date of this scenario.

Personal Services Expenditure Detail (1445)

Department of Transportation/Public Facilities

Scenario: FY2020 Governor Amended (15636)
Component: Central Region Construction and CIP Support (2293)
RDU: Design, Engineering and Construction (526)

Status	PCN	Tracking ID	Job Class Title	Time Status	Retire Code	Barg Unit	Location	Salary Sched	Range / Steps	Comp Months	Split / Count	Annual Salaries	COLA	Premium Pay	Annual Benefits	Total Costs	UGF Amount
25-N09091	21521	Eng Tech Sub Journey I		NP	N	LL	Wasilla	2BB	59 A	4.0		11,909	0	6,442	2,307	20,658	
													Total Salary Costs:	11,104,755			
													Total COLA:	370,761			
													Total Premium Pay:	2,793,021			
													Total Benefits:	7,540,636			
													Total Pre-Vacancy:	21,809,173			
													Minus Vacancy Adjustment of 5.92%:	(1,290,473)			
													Total Post-Vacancy:	20,518,700			
													Plus Lump Sum Premium Pay:	0			
													Personal Services Line 100:	20,518,700			

	Total Positions	New	Deleted
Full Time Positions:	111	0	0
Part Time Positions:	41	0	0
Non Permanent Positions:	19	0	0
Positions in Component:	171	0	0

Total Component Months: 1728.5

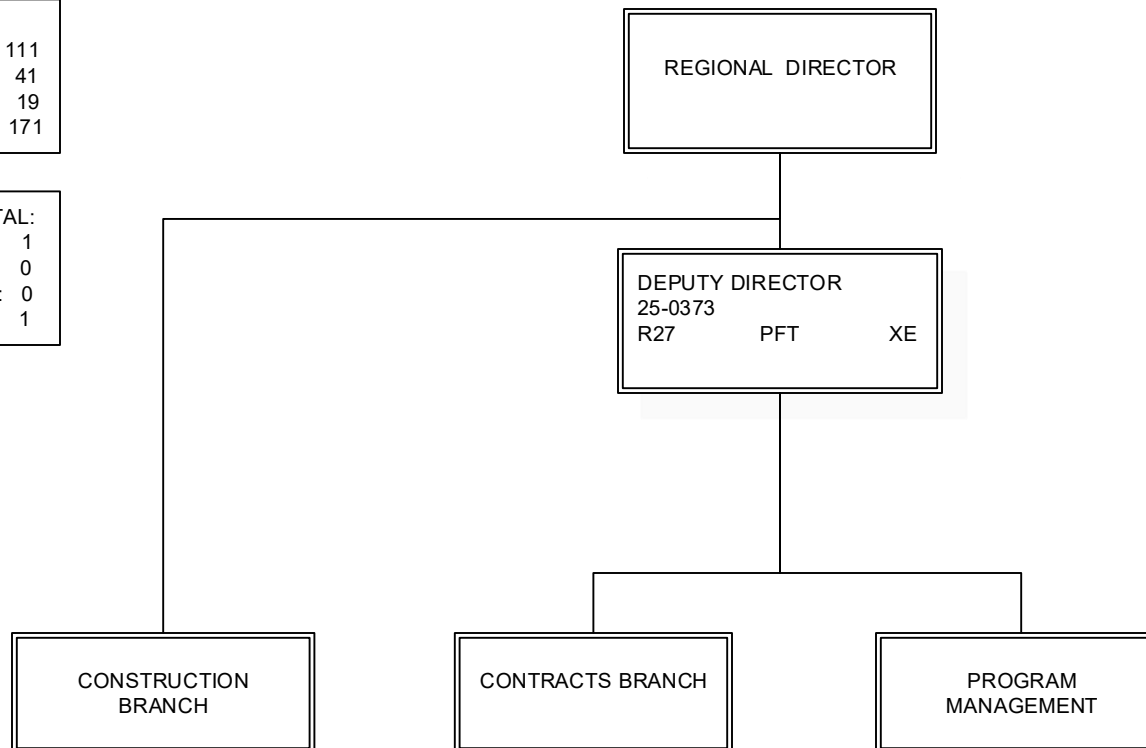
PCN Funding Sources:	Pre-Vacancy	Post-Vacancy	Percent
1004 General Fund Receipts	18,946	17,825	0.09%
1007 Interagency Receipts	50,817	47,810	0.23%
1039 U/A Indirect Cost Recovery	4,486,212	4,220,757	20.57%
1061 Capital Improvement Project Receipts	17,253,199	16,232,308	79.11%
Total PCN Funding:	21,809,173	20,518,700	100.00%

Note: If a position is split, an asterisk (*) will appear in the Split/Count column. If the split position is also counted in the component, two asterisks (**) will appear in this column. [No valid job title] appearing in the Job Class Title indicates that the PCN has an invalid class code or invalid range for the class code effective date of this scenario.

DEPARTMENT OF TRANSPORTATION & PUBLIC FACILITIES
RDU: DESIGN, ENGINEERING AND CONSTRUCTION
COMPONENT: CENTRAL REGION CONSTRUCTION AND CIP SUPPORT (2293)
FY2020 GOVERNOR AMENDED BUDGET

COMPONENT TOTAL:
FULLTIME POSITIONS: 111
PARTTIME POSITIONS: 41
NON PERM POSITIONS: 19
TOTAL 171

REGIONAL OFFICE TOTAL:
FULLTIME POSITIONS: 1
PARTTIME POSITIONS: 0
NON PERM POSITIONS: 0
TOTAL 1



Note: All positions are located in Anchorage.

DEPARTMENT OF TRANSPORTATION & PUBLIC FACILITIES
 RDU: DESIGN, ENGINEERING AND CONSTRUCTION
 COMPONENT: CENTRAL REGION CONSTRUCTION AND CIP SUPPORT (2293)
 FY2020 GOVERNOR AMENDED BUDGET

CONSTRUCTION TOTAL:
 FULLTIME POSITIONS: 90
 PARTTIME POSITIONS: 41
 NON PERM POSITIONS: 19
 TOTAL 150

REGIONAL CONSTRUCTION ENGINEER
 Engineer/Architect V
 25-0408
 R27 PFT SS

Administrative Asst. III
 25-0494
 R15 PFT GG

Office Assistant II
 25-0461
 R10 PFT GG

QUALITY ASSURANCE

Engineer/Architect III
 25-0405
 R25 PFT SS

SPECIAL PROJECTS
 Engineer/Architect IV
 25-0376
 R26 PFT SS

CONSTRUCTION CHIEF
 Engineer/Architect IV
 25-0391
 R26 PFT SS

Engineer Assistant III
 25-0521
 R21 PFT GG

CONSTRUCTION CHIEF
 Engineer/Architect IV
 25-0669
 R26 PFT SS

CONCURRENT REVIEW

ROVING INSPECTORS

Engineering Associate
 25-0625
 R21 PFT GG

Engineer Assistant III
 25-0731
 R21 PFT GG

Engineer/Architect III
 R25 PFT SS
 25-0440
 25-0502

Engineer Assistant III
 25-3513
 R21 PFT GG

Accounting Tech II
 25-0411
 R14 PFT GG

Engineer/Architect III
 R25 PFT SS
 25-0192
 25-0415

Engineer Assistant III
 25-0581
 R21 PFT GG

Engineer Assistant III
 25-3550
 R21 PFT GG

Engineer/Architect II
 25-3400
 R23 PFT SS

Engineer/Architect II
 R23 PFT SS
 25-0678
 25-0795

Engineer Assistant II
 25-0909
 R19 PFT GG

Engineer Assistant II
 R19 PFT GG
 25-0735
 25-0737
 25-3506

Engineer Assistant III
 R21 PFT GG
 25-0681

Note: All positions are located in Anchorage.

ADDITIONAL STAFF ASSIGNED AS NEEDED FROM
 POSITION LISTING ON NEXT PAGE

POSITIONS REPORT TO ENGINEER/
 ARCHITECT POSITIONS ON PREVIOUS PAGE

Engineering Associate R21 PFT GG
25-0506
25-0509
25-0514
25-0518
25-0758

Engineering Assistant III R21 PFT GG	
25-0446	25-0674
25-0465	25-0688
25-0508	25-0694
25-0510	25-0759
25-0512	25-0799
25-0513	25-3399
25-0579	25-3514
25-0633	25-3515

Engineering Assistant II R19 PFT GG
25-0684
25-0654

Engineering Assistant I/II (FLEX) R17/19 PFT GG	
25-0403	25-0693
25-0516	25-0696
25-0517	25-0701
25-0519	25-0760
25-0520	25-0767
25-0522	25-0804
25-0523	25-0807
25-0524	25-0809
25-0525	25-0811
25-0526	25-0814
25-0527	25-0815
25-0528	25-0822
25-0532	25-3403
25-0533	25-3404
25-0534	25-3503
25-0535	25-3504
25-0536	25-3505
25-0641	25-3507
25-0642	25-3508
25-0650	25-3509
25-0653	

Eng Tech Journey WG54 PPT LL
25-0539
25-0540
25-0542
25-0552
25-0553 Soldotna
25-0554
25-0555
25-0559 Wasilla
25-0560
25-0563
25-0564
25-0828
25-0829 Wasilla
25-0832
25-0833

Eng Tech SJ III WG55 PPT LL
25-0562
25-0570
25-0571
25-0572 Wasilla
25-0574
25-0577
25-0604
25-0606
25-0836 Wasilla
25-0896

Eng Tech SJ II WG57 PPT LL
25-0547
25-0548
25-0586
25-0587
25-0591 Wasilla
25-0592
25-0593
25-0594 Wasilla
25-0595 Wasilla
25-0601
25-0870
25-0875
25-0877
25-0907
25-0956
25-0957

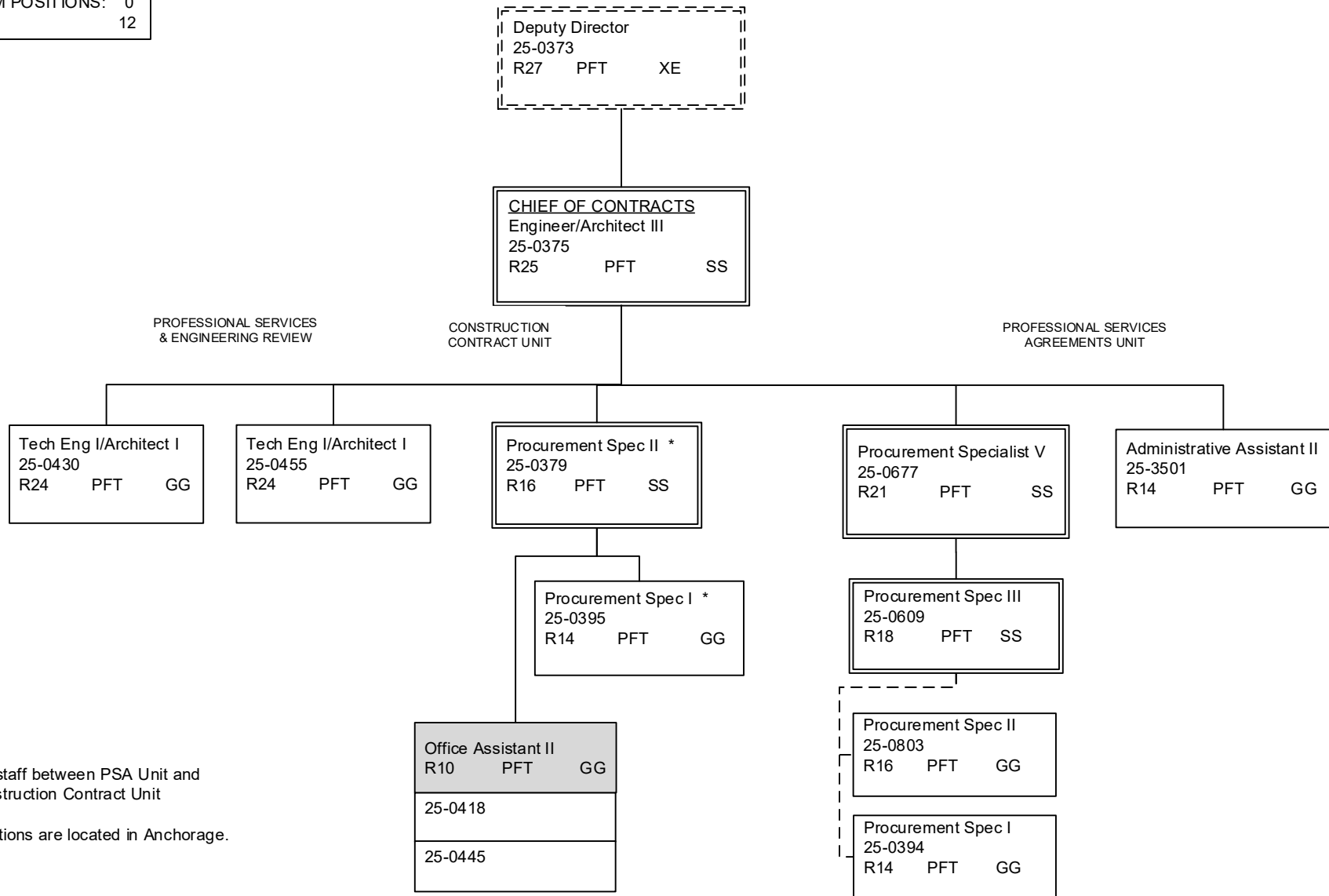
Eng Tech SJ I/II WG57/59 NP LL
25N0916
25N0917
25N0918
25N0919
25N0920
25N0921
25N0922
25N0923
25N0924
25N0925

Eng Tech SJ I WG59 NP LL
25N09022 Wasilla
25N09023
25N09024 Wasilla
25N09085
25N09087
25N09088
25N09089
25N09090
25N09091 Wasilla

Note: All positions are located in Anchorage except where noted.

DEPARTMENT OF TRANSPORTATION & PUBLIC FACILITIES
 RDU: DESIGN, ENGINEERING AND CONSTRUCTION
 COMPONENT: CENTRAL REGION CONSTRUCTION AND CIP SUPPORT (2293)
 FY2020 GOVERNOR AMENDED BUDGET

CONTRACTS TOTAL:	
FULLTIME POSITIONS:	12
PARTTIME POSITIONS:	0
NON PERM POSITIONS:	0
TOTAL	12



* Shared staff between PSA Unit and Construction Contract Unit

Note: All positions are located in Anchorage.

DEPARTMENT OF TRANSPORTATION & PUBLIC FACILITIES
 RDU: DESIGN, ENGINEERING AND CONSTRUCTION
 COMPONENT: CENTRAL REGION CONSTRUCTION AND CIP SUPPORT (2293)
 FY2020 GOVERNOR AMENDED BUDGET

GRAPHICS TOTAL:	
FULLTIME POSITIONS:	2
PARTTIME POSITIONS:	0
NON PERM POSITIONS:	0
TOTAL	2

* Admin Oper Mgr I
25-0630
R22 PFT SS

GRAPHICS

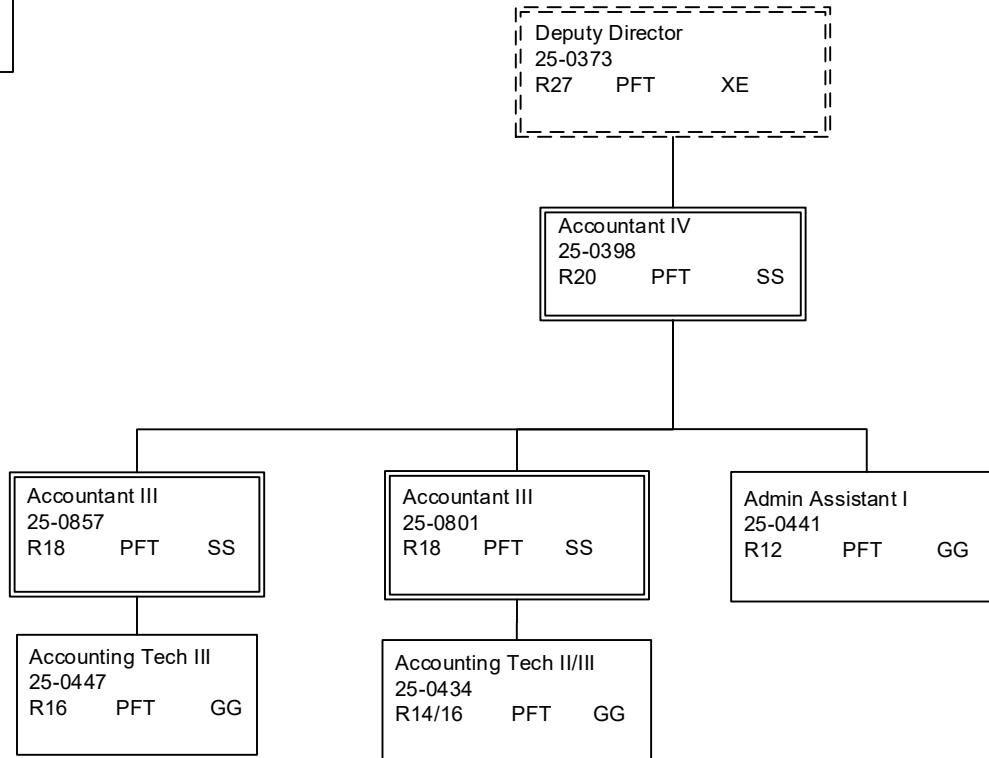
Offset Dup Mach Op
R12 PFT GG
25-0666
25-0763

Note: All positions are located in Anchorage.

*PCN 25-0630 is budgeted in the Central Region Support Services budget component

DEPARTMENT OF TRANSPORTATION & PUBLIC FACILITIES
 RDU: DESIGN, ENGINEERING AND CONSTRUCTION
 COMPONENT: CENTRAL REGION CONSTRUCTION AND CIP SUPPORT (2293)
 FY2020 GOVERNOR AMENDED BUDGET

PROGRAM MANAGEMENT:	
FULLTIME POSITIONS:	6
PARTTIME POSITIONS:	0
NON PERM POSITIONS:	0
TOTAL	6



Note: All positions are located in Anchorage.