

Component Detail (1077)
Department of Transportation/Public Facilities

Component: Northern Region Construction and CIP Support (2295)

Non-Formula Component

RDU: Design, Engineering and Construction (526)

IRIS AP Type: T04J

	FY2018 Actuals (15158)	FY2019 Conference Committee (14954)	FY2019 Authorized (14962)	FY2019 Management Plan (14994)	FY2020 Governor (15610)	FY2020 Governor Amended (15636)	FY2020 Governor vs FY2020 Governor Amended	
1000 Personal Services	19,164.2	16,560.3	16,560.3	16,660.3	17,137.6	16,660.3	-477.3	-2.8%
2000 Travel	71.1	68.3	68.3	68.3	68.3	36.7	-31.6	-46.3%
3000 Services	354.6	253.1	253.1	253.1	253.1	253.1	0.0	0.0%
4000 Commodities	194.2	133.2	133.2	133.2	133.2	133.2	0.0	0.0%
5000 Capital Outlay	26.2	0.0	0.0	0.0	0.0	0.0	0.0	0.0%
7000 Grants, Benefits	0.0	0.0	0.0	0.0	0.0	0.0	0.0	0.0%
8000 Miscellaneous	0.0	0.0	0.0	0.0	0.0	0.0	0.0	0.0%
Totals	19,810.3	17,014.9	17,014.9	17,114.9	17,592.2	17,083.3	-508.9	-2.9%
<u>Funding Sources:</u>								
1004 Gen Fund (UGF)	163.1	163.2	163.2	163.2	163.2	160.2	-3.0	-1.8%
1007 I/A Rcpts (Other)	200.0	0.0	0.0	0.0	0.0	0.0	0.0	0.0%
1061 CIP Rcpts (Other)	19,447.2	16,851.7	16,851.7	16,951.7	17,429.0	16,923.1	-505.9	-2.9%
<u>Funding Totals:</u>								
Unrestricted General (UGF)	163.1	163.2	163.2	163.2	163.2	160.2	-3.0	-1.8%
Designated General (DGF)	0.0	0.0	0.0	0.0	0.0	0.0	0.0	0.0%
Other	19,647.2	16,851.7	16,851.7	16,951.7	17,429.0	16,923.1	-505.9	-2.9%
Federal	0.0	0.0	0.0	0.0	0.0	0.0	0.0	0.0%
<u>Positions:</u>								
Permanent Full Time	67	67	67	69	69	69	0	0.0%
Permanent Part Time	84	83	83	81	81	81	0	0.0%
Non Permanent	5	5	5	5	5	5	0	0.0%

Change Record Detail - Multiple Scenarios with Descriptions (294)
Department of Transportation/Public Facilities

Component: Northern Region Construction and CIP Support (2295)
RDU: Design, Engineering and Construction (526)

Scenario/Change Record Title	Trans Type	Totals	Personal Services	Travel	Services	Commodities	Capital Outlay	Grants, Benefits	Miscellaneous	PFT	PPT	NP
***** Changes From FY2019 Conference Committee To FY2019 Authorized *****												
FY2019 Conference Committee	ConfCom	17,014.9	16,560.3	68.3	253.1	133.2	0.0	0.0	0.0	67	83	5
1004 Gen Fund		163.2										
1061 CIP Rcpts		16,851.7										
Subtotal		17,014.9	16,560.3	68.3	253.1	133.2	0.0	0.0	0.0	67	83	5
***** Changes From FY2019 Authorized To FY2019 Management Plan *****												
Transfer from Southcoast Region Construction to Comply with Vacancy Factor Guidelines												
	Trin	100.0	100.0	0.0	0.0	0.0	0.0	0.0	0.0	0	0	0
1061 CIP Rcpts		100.0										
Transfer from the Southcoast Region Construction component to the Northern Region Construction and CIP Support component to bring personal services within vacancy factor guidelines. Authority is available to transfer due to high turnover and hiring staff at lower step placement than previously budgeted.												
Time Status Change Information Officer III (25-1820) to Full-time for Northern Region Construction and CIP Support												
	PosAdj	0.0	0.0	0.0	0.0	0.0	0.0	0.0	0.0	1	-1	0
Due to a restructuring of the department's information offices, it was necessary to reclassify a part-time Engineer Assistant I/II (25-1820), range 17/19, GP (General), located in Nome to a full-time Information Officer III, range 20, GP, located in Fairbanks to provide dedicated public relations support to Northern Region.												
Time Status Change Accounting Tech I/II/III (25-1869) to Full-time for Capital Improvement Project Funding Management												
	PosAdj	0.0	0.0	0.0	0.0	0.0	0.0	0.0	0.0	1	-1	0
Northern Region Construction and CIP Support, Project Control section has experienced an increased workload due to the implementation of the State of Alaska Integrated Resource Information System (IRIS). The complexity and volume of work created exceeds existing staffing resources. The reclassification of a part-time Engineering Assistant III (25-1869), range 21, GP (General), located in Fairbanks to a full-time Accounting Technician I/II/III, range 12/14/16, allows the region to better manage capital improvement project funding and aligns staffing levels with the other regions.												
Subtotal		17,114.9	16,660.3	68.3	253.1	133.2	0.0	0.0	0.0	69	81	5
***** Changes From FY2019 Management Plan To FY2020 Governor Amended *****												
Executive Branch 50% Travel Reduction												
	Dec	-31.6	0.0	-31.6	0.0	0.0	0.0	0.0	0.0	0	0	0
1004 Gen Fund		-3.0										
1061 CIP Rcpts		-28.6										
50% executive branch travel reduction based on actual costs of travel in FY2018. Exceptions were made to travel essential to public safety, health, and disaster management.												
Totals		17,083.3	16,660.3	36.7	253.1	133.2	0.0	0.0	0.0	69	81	5

Change Record Detail - Multiple Scenarios with Descriptions (294)
Department of Transportation/Public Facilities

Component: Northern Region Construction and CIP Support (2295)

RDU: Design, Engineering and Construction (526)

Scenario/Change Record Title	Trans Type	Totals	Personal Services	Travel	Services	Commodities	Capital Outlay	Grants, Benefits	Miscellaneous	Positions		
										PFT	PPT	NP

Personal Services Expenditure Detail (1445)

Department of Transportation/Public Facilities

Scenario: FY2020 Governor Amended (15636)

Component: Northern Region Construction and CIP Support (2295)

RDU: Design, Engineering and Construction (526)

Status PCN	Tracking ID	Job Class Title	Time Status	Retire Code	Barg Unit	Location	Salary Sched	Range / Steps	Comp Months	Split / Count	Annual Salaries	COLA	Premium Pay	Annual Benefits	Total Costs	UGF Amount
25-1239	19558	Asst Commissioner	FT	A	XE	Fairbanks	N03	27 M / N	6.0	*	74,328	0	0	36,703	111,031	96,242
25-1366	19672	Engineer/Architect IV	FT	A	SS	Fairbanks	203	26 O / P	12.0		162,699	0	0	76,893	239,592	
25-1367	19673	Administrative Officer I	FT	A	SS	Fairbanks	203	17 J	12.0		75,204	0	0	46,513	121,717	
25-1368	19674	Engineer/Architect IV	FT	A	SS	Fairbanks	203	26 P	12.0		166,095	0	0	77,935	244,030	
25-1371	19677	Engineer/Architect III	FT	A	SS	Fairbanks	203	25 J	12.0		129,144	0	0	66,368	195,512	
25-1384	19685	Engineer/Architect III	FT	A	SS	Fairbanks	203	25 L	12.0		138,356	0	0	69,425	207,781	
25-1385	19686	Accounting Tech III	FT	A	GP	Fairbanks	203	16 E / F	12.0		60,015	2,463	0	40,582	103,060	
25-1387	19688	Engineering Associate	FT	A	GP	Fairbanks	203	21 O	12.0		109,671	5,194	16,885	65,076	196,826	
25-1403	19702	Accounting Tech III	FT	A	GG	Fairbanks	203	16 O / P	12.0		80,238	3,417	3,018	49,137	135,810	
25-1405	19703	Engineering Associate	FT	A	GP	Fairbanks	203	21 D / E	12.0		81,429	3,848	12,318	52,999	150,594	
25-1407	19705	Engineer/Architect III	FT	A	SS	Fairbanks	203	25 D / E	12.0		118,482	0	0	62,444	180,926	
25-1410	19708	Office Assistant II	FT	A	GP	Fairbanks	203	10 B / C	12.0		36,385	1,493	0	31,884	69,762	
25-1411	19709	Engineer/Architect III	FT	A	SS	Fairbanks	203	25 K	12.0		133,344	0	0	67,887	201,231	
25-1412	19710	Engineering Assistant III	FT	A	GP	Fairbanks	203	21 E / F	12.0		84,209	3,978	12,705	54,164	155,056	
25-1431	19724	Engineering Associate	FT	A	GP	Fairbanks	203	21 K	12.0		95,112	4,354	10,975	57,541	167,982	
25-1434	19727	Engineer/Architect I	FT	A	GP	Fairbanks	203	22 G / J	12.0		96,866	3,976	0	54,147	154,989	
25-1436	19729	Engineering Assistant III	FT	A	GP	Fairbanks	203	21 G	12.0		88,416	4,187	13,602	56,043	162,248	
25-1443	19735	Engineering Assistant II	FT	A	GP	Fairbanks	203	19 J / K	12.0		81,008	3,833	12,378	52,866	150,085	
25-1447	19739	Engineering Assistant III	FT	A	GP	Fairbanks	203	21 K	12.0		95,112	4,504	14,634	58,888	173,138	
25-1449	19740	Engineering Assistant II	FT	A	GG	Fairbanks	203	19 Q	12.0		103,122	4,884	15,877	62,294	186,177	
25-1451	19742	Administrative Assistant II	FT	A	GP	Fairbanks	203	14 B / C	12.0		46,347	1,902	0	35,551	83,800	
25-1455	19744	Engineering Assistant III	PT	A	GP	Fairbanks	203	21 F	6.0		42,792	2,297	13,167	29,844	88,100	
25-1457	19746	Engineering Assistant II	FT	A	GP	Fairbanks	203	19 E / F	12.0		73,748	3,484	11,127	49,733	138,092	
25-1459	19748	Engineering Assistant II	FT	A	GP	Fairbanks	203	19 E / F	12.0		72,543	3,662	16,690	51,337	144,232	
25-1461	19750	Administrative Assistant I	FT	A	GP	Fairbanks	203	12 J / K	12.0		50,808	2,085	0	37,193	90,086	
25-1464	19752	Eng Tech Journey	PT	A	LL	Fairbanks	2EE	54 D	6.0		27,513	0	3,969	20,782	52,264	
25-1465	19753	Eng Tech Journey	PT	A	LL	Fairbanks	2EE	54 F	8.0		39,110	0	4,231	28,211	71,552	
25-1467	19754	Eng Tech Journey	PT	A	LL	Nome	2II	54 E	6.0		30,373	0	13,144	25,212	68,729	
25-1469	19756	Eng Tech Journey	PT	A	LL	Fairbanks	2EE	54 C / D	8.0		36,037	0	7,689	28,353	72,079	

Note: If a position is split, an asterisk (*) will appear in the Split/Count column. If the split position is also counted in the component, two asterisks (**) will appear in this column.

[No valid job title] appearing in the Job Class Title indicates that the PCN has an invalid class code or invalid range for the class code effective date of this scenario.

Personal Services Expenditure Detail (1445)

Department of Transportation/Public Facilities

Scenario: FY2020 Governor Amended (15636)
Component: Northern Region Construction and CIP Support (2295)
RDU: Design, Engineering and Construction (526)

Status	PCN	Tracking ID	Job Class Title	Time Status	Retire Code	Barg Unit	Location	Salary Sched	Range / Steps	Comp Months	Split / Count	Annual Salaries	COLA	Premium Pay	Annual Benefits	Total Costs	UGF Amount
25-1473	19759	Engineering Assistant III	PT	A	GP	Fairbanks	203	21 C	8.0	51,488	2,601	11,883	35,654	101,626			
25-1474	19760	Eng Tech Journey	PT	A	LL	Fairbanks	2EE	54 O / P	8.0	49,614	0	5,206	32,437	87,257			
25-1479	19763	Eng Tech Journey	PT	A	LL	Fairbanks	2EE	54 F	8.0	39,110	0	8,463	29,769	77,342			
25-1480	19764	Eng Tech Sub Journey III	PT	A	LL	Fairbanks	2EE	55 O	8.0	45,682	0	9,885	32,712	88,279			
25-1482	19765	Eng Tech Sub Journey III	PT	A	LL	Nome	2II	55 D	6.0	28,116	0	12,168	24,022	64,306			
25-1484	19766	Eng Tech Sub Journey III	PT	A	LL	Fairbanks	2EE	55 C / D	8.0	34,183	0	6,759	27,328	68,270			
25-1485	19767	Eng Tech Sub Journey III	PT	A	LL	Fairbanks	2EE	55 D	8.0	34,868	0	7,545	27,870	70,283			
25-1486	19768	Eng Tech Sub Journey III	PT	A	LL	Fairbanks	2EE	55 C	8.0	33,773	0	7,308	27,379	68,460			
25-1487	19769	Eng Tech Sub Journey II	PT	A	LL	Nome	2II	57 B	6.0	23,926	0	10,354	21,812	56,092			
25-1490	19770	Eng Tech Journey	PT	A	LL	Fairbanks	2EE	54 E / F	10.0	48,425	0	4,098	34,656	87,179			
25-1492	19772	Eng Tech Sub Journey III	PT	A	LL	Fairbanks	2EE	55 F	8.0	37,156	0	8,040	28,894	74,090			
25-1494	19774	Maint Gen Journey	FT	A	LL	Fairbanks	2EE	54 D / E	9.6	44,036	0	9,922	34,571	88,529			
25-1502	19776	Eng Tech Sub Journey II	PT	A	LL	Fairbanks	2EE	57 C / D	6.0	23,096	0	3,288	18,905	45,289			
25-1506	19780	Eng Tech Sub Journey II	PT	A	LL	Nome	2II	57 B	6.0	23,926	0	10,354	21,812	56,092			
25-1507	19781	Eng Tech Sub Journey II	PT	A	LL	Fairbanks	2EE	57 B	6.0	22,085	0	6,372	19,668	48,125			
25-1508	19782	Eng Tech Sub Journey II	PT	A	LL	Fairbanks	2EE	57 B	6.0	22,085	0	6,372	19,668	48,125			
25-1511	19784	Eng Tech Sub Journey II	PT	A	LL	Fairbanks	2EE	57 E / F	6.0	24,734	0	7,005	20,876	52,615			
25-1518	19788	Eng Tech Sub Journey II	PT	A	LL	Fairbanks	2EE	57 B	6.0	22,085	0	6,372	19,668	48,125			
25-1519	19789	Eng Tech Sub Journey II	PT	A	LL	Fairbanks	2EE	57 B	6.0	22,085	0	6,372	19,668	48,125			
25-1524	19791	Eng Tech Journey	PT	A	LL	Fairbanks	2EE	54 K	6.0	31,423	0	9,066	24,097	64,586			
25-1525	19792	Eng Tech Sub Journey II	PT	A	LL	Fairbanks	2EE	57 B	6.0	22,085	0	6,372	19,668	48,125			
25-1534	19799	Engineering Assistant III	PT	A	GP	Fairbanks	203	21 G / J	9.5	70,614	3,456	13,602	45,638	133,310			
25-1541	19806	Engineering Assistant II	PT	A	GP	Fairbanks	203	19 B	8.0	43,616	2,203	10,065	32,087	87,971			
25-1548	19811	Engineering Assistant II	PT	A	GP	Fairbanks	203	19 E / F	6.0	36,272	1,945	11,127	26,693	76,037			
25-1555	19817	Engineering Asst I	FT	A	GP	Fairbanks	203	17 B / C	12.0	58,265	2,751	8,763	43,163	112,942			
25-1557	19819	Engineering Assistant II	PT	A	GG	Fairbanks	203	19 B / C	9.5	52,424	2,565	10,065	37,640	102,694			
25-1566	19825	Eng Tech Sub Journey II	PT	A	LL	Fairbanks	2EE	57 C	6.0	22,792	0	6,576	20,004	49,372			
25-1569	19827	Eng Tech Sub Journey II	PT	A	LL	Fairbanks	2EE	57 B	6.0	22,085	0	6,372	19,668	48,125			
25-1573	19831	Engineering Associate	FT	A	GP	Fairbanks	203	21 S	12.0	127,070	5,749	19,564	71,624	224,007			

Note: If a position is split, an asterisk (*) will appear in the Split/Count column. If the split position is also counted in the component, two asterisks (**) will appear in this column.
 [No valid job title] appearing in the Job Class Title indicates that the PCN has an invalid class code or invalid range for the class code effective date of this scenario.

Personal Services Expenditure Detail (1445)

Department of Transportation/Public Facilities

Scenario: FY2020 Governor Amended (15636)
Component: Northern Region Construction and CIP Support (2295)
RDU: Design, Engineering and Construction (526)

Status	PCN	Tracking ID	Job Class Title	Time Status	Retire Code	Barg Unit	Location	Salary Sched	Range / Steps	Comp Months	Split / Count	Annual Salaries	COLA	Premium Pay	Annual Benefits	Total Costs	UGF Amount
25-1576	19833	Engineering Assistant III	FT	A	GP	Nome	237 21 J	12.0	121,422	5,860	28,042	72,493	227,817				
25-1578	19834	Engineering Assistant III	FT	A	GP	Fairbanks	203 21 D	9.6	64,051	2,629	0	38,369	105,049				
25-1579	19835	Engineering Assistant II	PT	A	GP	Fairbanks	203 19 D	9.6	56,083	2,744	10,785	39,406	109,018				
25-1580	19836	Engineering Assistant II	FT	A	GP	Fairbanks	203 19 G / J	12.0	79,922	3,768	11,883	52,284	147,857				
25-1582	19838	Engineering Assistant II	PT	A	GP	Fairbanks	203 19 D / E	9.6	56,194	2,749	10,785	39,447	109,175				
25-1596	19841	Eng Tech Sub Journey II	PT	A	LL	Fairbanks	2EE 57 C	6.0	22,792	0	6,576	20,004	49,372				
25-1603	19846	Engineer/Architect III	FT	A	SS	Fairbanks	203 25 M / N	12.0	145,290	0	0	71,552	216,842				
25-1609	19850	Engineering Associate	FT	A	GP	Fairbanks	203 21 F / G	12.0	86,292	4,082	13,167	55,101	158,642				
25-1615	19855	Eng Tech Sub Journey III	PT	A	LL	Fairbanks	2EE 55 D	8.0	34,868	0	5,658	27,175	67,701				
25-1625	19860	Engineering Assistant II	PT	A	GP	Fairbanks	203 19 F	8.0	49,968	2,406	8,649	33,904	94,927				
25-1627	19862	Engineering Assistant II	PT	A	GP	Nome	237 19 C / D	6.0	46,346	2,754	20,745	33,941	103,786				
25-1632	19864	Engineering Assistant III	PT	A	GP	Fairbanks	203 21 C / D	6.0	38,852	1,838	5,941	25,733	72,364				
25-1633	19865	Engineering Associate	FT	A	GP	Fairbanks	203 21 L / M	12.0	100,989	4,610	11,331	59,835	176,765				
25-1634	19866	Engineer/Architect V	FT	A	SS	Fairbanks	203 27 N	12.0	160,125	0	0	76,103	236,228				1,323
25-1637	19869	Engineering Assistant II	FT	A	GP	Fairbanks	203 19 E / F	12.0	74,843	3,300	5,563	48,088	131,794				
25-1638	19870	Office Assistant II	FT	A	GP	Fairbanks	203 10 B	12.0	35,880	1,473	0	31,698	69,051				
25-1639	19871	Engineering Assistant III	FT	A	GP	Fairbanks	203 21 L / M	12.0	101,255	4,621	11,331	59,933	177,140				
25-1656	19883	Engineering Assistant III	PT	A	GP	Fairbanks	203 21 C / D	9.6	64,051	3,008	9,238	41,770	118,067				
25-1657	19884	Engineering Assistant III	FT	A	GP	Fairbanks	203 21 F / G	12.0	86,410	3,817	6,583	52,721	149,531				
25-1658	19885	Engineering Assistant III	FT	A	GP	Fairbanks	203 21 D / E	12.0	82,584	3,781	9,528	52,397	148,290				
25-1659	19886	Engineering Asst I	FT	A	GP	Fairbanks	203 17 B / C	12.0	58,265	2,706	7,667	42,760	111,398				
25-1660	19887	Engineering Assistant II	PT	A	GP	Fairbanks	203 19 B / C	9.5	52,064	2,498	8,806	37,044	100,412				
25-1661	19888	Engineering Assistant II	PT	A	GP	Fairbanks	203 19 C	9.5	53,504	2,569	9,098	37,682	102,853				
25-1667	19890	Eng Tech Journey	PT	A	LL	Fairbanks	2EE 54 M	9.5	53,309	0	9,714	37,755	100,778				
25-1668	19891	Eng Tech Journey	PT	A	LL	Nome	2II 54 J / K	9.0	49,552	0	13,990	37,180	100,722				
25-1674	19895	Accounting Tech I	FT	A	GG	Fairbanks	203 12 B / C	12.0	40,749	1,672	0	33,490	75,911				
25-1678	19898	Eng Tech Sub Journey III	PT	A	LL	Fairbanks	2EE 55 K	8.0	39,790	0	8,610	30,074	78,474				
25-1684	19903	Eng Tech Sub Journey II	PT	A	LL	Fairbanks	2EE 57 E / F	6.0	24,929	0	7,005	20,948	52,882				
25-1688	19905	Eng Tech Sub Journey II	PT	A	LL	Fairbanks	2EE 57 B / C	6.0	22,380	0	6,372	19,777	48,529				

Note: If a position is split, an asterisk (*) will appear in the Split/Count column. If the split position is also counted in the component, two asterisks (**) will appear in this column.
 [No valid job title] appearing in the Job Class Title indicates that the PCN has an invalid class code or invalid range for the class code effective date of this scenario.

Personal Services Expenditure Detail (1445)

Department of Transportation/Public Facilities

Scenario: FY2020 Governor Amended (15636)

Component: Northern Region Construction and CIP Support (2295)

RDU: Design, Engineering and Construction (526)

Status	PCN	Tracking ID	Job Class Title	Time Status	Retire Code	Barg Unit	Location	Salary Sched	Range / Steps	Comp Months	Split / Count	Annual Salaries	COLA	Premium Pay	Annual Benefits	Total Costs	UGF Amount
25-1689	19906	Eng Tech Sub Journey II	PT	A	LL	Fairbanks	2EE 57 B	7.0	25,766	0	4,779	21,969	52,514				
25-1693	19908	Eng Tech Sub Journey II	PT	A	LL	Fairbanks	2EE 57 F	7.0	29,236	0	5,422	23,483	58,141				
25-1700	19911	Eng Tech Sub Journey II	PT	A	LL	Fairbanks	2EE 57 B	7.0	25,766	0	6,372	22,555	54,693				
25-1701	19912	Eng Tech Sub Journey II	PT	A	LL	Fairbanks	2EE 57 C	7.0	26,591	0	4,932	22,329	53,852				
25-1705	19915	Engineering Associate	FT	A	GP	Fairbanks	203 21 J	12.0	92,124	4,363	14,172	57,618	168,277				
25-1710	19920	Eng Tech Sub Journey II	PT	A	LL	Fairbanks	2EE 57 F	7.0	29,236	0	7,230	24,148	60,614				
25-1715	19923	Eng Tech Journey	PT	A	LL	Nome	2II 54 F	9.5	49,555	0	13,545	37,783	100,883				
25-1742	19937	Engineering Assistant III	PT	A	GP	Fairbanks	203 21 G	6.0	44,208	2,373	13,602	30,525	90,708				
25-1745	19938	Eng Tech Sub Journey II	PT	A	LL	Fairbanks	2EE 57 B	7.0	25,766	0	6,372	22,555	54,693				
25-1748	19939	Eng Tech Journey	PT	A	LL	Fairbanks	2EE 54 F	9.5	46,444	0	8,463	34,767	89,674				
25-1752	19940	Accountant IV	FT	A	SS	Fairbanks	203 20 Q / R	12.0	122,456	0	0	63,906	186,362				
25-1758	19944	Eng Tech Journey	PT	A	LL	Fairbanks	2EE 54 E	6.0	28,407	0	8,196	22,667	59,270				
25-1761	19945	Engineering Asst I	PT	A	GP	Fairbanks	203 17 B	9.6	45,562	2,230	8,763	34,789	91,344				
25-1762	19946	Eng Tech Sub Journey III	PT	A	LL	Fairbanks	2EE 55 C / D	9.0	39,021	0	6,394	30,507	75,922				
25-1765	19947	Engineering Assistant III	FT	A	GP	Fairbanks	203 21 N / O	12.0	106,708	5,048	16,274	63,760	191,790				
25-1767	19949	Office Assistant II	FT	A	GP	Fairbanks	203 10 N / O	12.0	50,974	2,092	0	37,254	90,320				
25-1778	19957	Engineer/Architect III	FT	A	SS	Nome	237 25 D / E	12.0	155,724	0	0	74,753	230,477				
25-1780	19959	Engineering Assistant III	PT	A	GP	Nome	237 21 J	9.6	98,026	5,184	28,278	61,285	192,773				
25-1781	19960	Engineering Assistant III	FT	A	GP	Fairbanks	203 21 J	12.0	92,124	4,508	17,715	58,922	173,269				
25-1782	19961	Engineering Associate	PT	A	GP	Fairbanks	203 21 B / C	11.0	69,846	3,629	18,566	49,494	141,535				
25-1784	19963	Engineering Assistant III	PT	A	GP	Fairbanks	203 21 B	8.0	49,968	2,642	14,415	36,026	103,051				
25-1785	19964	Engineering Associate	FT	A	GP	Nome	237 21 Q	12.0	157,017	8,113	49,921	90,126	305,177				
25-1786	19965	Eng Tech Sub Journey III	PT	A	LL	Nome	2II 55 E	7.5	36,198	0	12,532	29,429	78,159				
25-1787	19966	Eng Tech Sub Journey II	PT	A	LL	Fairbanks	2EE 57 D / E	7.5	29,653	0	6,786	24,905	61,344				
25-1789	19968	Eng Tech Sub Journey III	PT	A	LL	Nome	2II 55 O / P	7.5	45,484	0	15,678	34,005	95,167				
25-1790	19969	Eng Tech Sub Journey II	PT	A	LL	Nome	2II 57 B	6.0	23,926	0	10,354	21,812	56,092				
25-1794	19972	Eng Tech Sub Journey II	PT	A	LL	Nome	2II 57 B	6.0	23,926	0	10,354	21,812	56,092				
25-1795	19973	Engineering Associate	FT	A	GP	Nome	237 21 C / D	12.0	106,186	5,277	23,706	66,304	201,473				
25-1796	19974	Engineering Assistant III	FT	A	GP	Fairbanks	203 21 L / M	12.0	98,595	4,977	22,662	63,125	189,359				

Note: If a position is split, an asterisk (*) will appear in the Split/Count column. If the split position is also counted in the component, two asterisks (**) will appear in this column. [No valid job title] appearing in the Job Class Title indicates that the PCN has an invalid class code or invalid range for the class code effective date of this scenario.

Personal Services Expenditure Detail (1445)

Department of Transportation/Public Facilities

Scenario: FY2020 Governor Amended (15636)

Component: Northern Region Construction and CIP Support (2295)

RDU: Design, Engineering and Construction (526)

Status	PCN	Tracking ID	Job Class Title	Time Status	Retire Code	Barg Unit	Location	Salary Sched	Range / Steps	Comp Months	Split / Count	Annual Salaries	COLA	Premium Pay	Annual Benefits	Total Costs	UGF Amount
25-1797	19975	Engineering Associate	FT	A	GP	Fairbanks	203	21	J / K	12.0		92,622	4,674	21,258	60,410	178,964	
25-1803	19977	Eng Tech Sub Journey III	PT	A	LL	Nome	211	55	B / C	7.5		33,460	0	11,470	28,030	72,960	
25-1806	19979	Office Assistant III	FT	A	GG	Nome	237	11	P / Q	12.0		77,820	3,677	11,758	51,464	144,719	
25-1807	19980	Engineering Associate	PT	A	GP	Nome	237	21	N / O	9.5		111,682	6,076	43,292	70,331	231,381	
25-1812	19981	Engineering Assistant II	PT	A	GP	Fairbanks	203	19	E	6.0		36,162	1,941	11,127	26,652	75,882	
25-1816	19982	Engineering Associate	FT	A	GP	Nome	237	21	M / N	12.0		145,750	7,028	33,524	81,638	267,940	
25-1818	19983	Engineering Assistant II	PT	A	GP	Fairbanks	203	19	D	9.0		52,578	2,601	10,785	37,192	103,156	
25-1819	19984	Eng Tech Sub Journey II	PT	A	LL	Nome	211	57	B	7.0		27,913	0	10,354	24,811	63,078	
25-1820	19985	Information Officer III	FT	A	GP	Fairbanks	203	20	B / C	12.0		70,382	2,889	0	44,398	117,669	
25-1822	19987	Engineering Assistant II	FT	A	GP	Nome	237	19	E / F	12.0		96,484	4,871	22,198	62,177	185,730	
25-1823	19988	Eng Tech Journey	PT	A	LL	Nome	211	54	J	8.0		43,103	0	13,990	33,273	90,366	
25-1825	19989	Engineering Assistant III	PT	A	GP	Nome	237	21	F	8.0		75,888	4,193	26,271	49,932	156,284	
25-1827	19990	Engineer/Architect III	FT	A	SS	Fairbanks	203	25	K	12.0		133,344	0	0	67,887	201,231	
25-1838	19998	Engineer/Architect III	FT	A	SS	Fairbanks	203	25	D / E	12.0		120,424	0	0	63,158	183,582	
25-1843	19999	Engineering Assistant II	PT	A	GP	Fairbanks	203	19	D	8.0		46,736	2,361	10,785	33,500	93,382	
25-1852	20002	Eng Tech Journey	PT	A	LL	Fairbanks	211	54	F	9.5		46,444	0	8,463	34,767	89,674	
25-1854	20003	Eng Tech Sub Journey III	PT	A	LL	Fairbanks	211	55	F	8.0		37,156	0	8,040	28,894	74,090	
25-1857	20004	Eng Tech Sub Journey III	PT	A	LL	Fairbanks	211	55	C / D	8.0		34,800	0	7,308	27,757	69,865	
25-1862	20008	Eng Tech Journey	PT	A	LL	Fairbanks	211	54	F / J	9.5		47,816	0	8,463	35,272	91,551	
25-1869	20011	Accounting Tech III	FT	A	GP	Fairbanks	203	16	M / N	12.0		74,782	3,756	16,735	52,178	147,451	
25-1875	20013	Eng Tech Sub Journey III	PT	A	LL	Fairbanks	211	55	E / F	8.0		36,355	0	7,788	28,507	72,650	
25-1876	20014	Eng Tech Sub Journey III	PT	A	LL	Fairbanks	211	55	C	8.0		33,773	0	7,308	27,379	68,460	
25-1880	20015	Eng Tech Sub Journey II	PT	A	LL	Fairbanks	211	57	B	7.0		25,766	0	6,372	22,555	54,693	
25-3401	21139	Engineering Associate	FT	A	GP	Fairbanks	203	21	K / L	12.0		95,883	4,836	21,951	61,865	184,535	
25-3402	21140	Engineering Assistant III	FT	A	GP	Nome	237	21	A / B	12.0		98,674	4,961	22,198	62,983	188,816	
25-3405	21143	Engineering Assistant II	FT	A	GP	Fairbanks	203	19	B / C	12.0		66,504	3,143	10,065	46,675	126,387	
25-3521	21250	Engineering Assistant II	FT	A	GP	Fairbanks	203	19	D / E	12.0		70,197	3,324	10,785	48,300	132,606	
25-3525	21253	Engineering Assistant II	FT	A	GG	Fairbanks	203	19	K / L	12.0		83,424	3,949	12,783	53,904	154,060	
25-3526	21254	Engineering Assistant II	FT	A	GP	Fairbanks	203	19	C / D	12.0		68,004	3,218	10,398	47,350	128,970	

Note: If a position is split, an asterisk (*) will appear in the Split/Count column. If the split position is also counted in the component, two asterisks (**) will appear in this column. [No valid job title] appearing in the Job Class Title indicates that the PCN has an invalid class code or invalid range for the class code effective date of this scenario.

Personal Services Expenditure Detail (1445)

Department of Transportation/Public Facilities

Scenario: FY2020 Governor Amended (15636)
Component: Northern Region Construction and CIP Support (2295)
RDU: Design, Engineering and Construction (526)

Status	PCN	Tracking ID	Job Class Title	Time Status	Retire Code	Barg Unit	Location	Salary Sched	Range / Steps	Comp Months	Split / Count	Annual Salaries	COLA	Premium Pay	Annual Benefits	Total Costs	UGF Amount
25-3527		21255	Engineering Assistant II	FT	A	GP	Fairbanks	203	19 E / F	12.0		73,748	3,484	11,127	49,733	138,092	
25-3528		21256	Engineering Assistant II	FT	A	GP	Fairbanks	203	19 C / D	12.0		67,899	3,214	10,398	47,311	128,822	
25-3730		21432	Engineering Assistant III	FT	A	GP	Fairbanks	203	21 J / K	12.0		94,116	4,735	21,258	60,960	181,069	
25-3731		21433	Engineering Assistant III	FT	A	GP	Fairbanks	203	21 K	12.0		95,112	4,805	21,951	61,581	183,449	
25-3732		21434	Engineering Assistant III	FT	A	GP	Fairbanks	203	21 E / F	12.0		83,709	4,218	19,057	56,318	163,302	
25-3733		21435	Engineering Assistant III	FT	A	GP	Nome	237	21 G / J	12.0		118,628	5,715	27,139	71,358	222,840	
25-IN1005		21528	Eng Tech Sub Journey I	NP	N	LL	Fairbanks	2EE	59 A	6.0		19,257	0	16,668	4,516	40,441	
25-IN1006		21529	Eng Tech Sub Journey I	NP	N	LL	Fairbanks	2EE	59 A	6.0		19,257	0	16,668	4,516	40,441	
25-IN1007		21530	Eng Tech Sub Journey II	NP	N	LL	Fairbanks	2EE	57 A	6.0		21,399	0	18,522	5,018	44,939	
25-IN1008		21531	Eng Tech Sub Journey I	NP	N	LL	Fairbanks	2EE	59 A	6.0		19,257	0	16,668	4,516	40,441	
25-IN1014		21537	Eng Tech Sub Journey I	NP	N	LL	Fairbanks	2EE	59 A	6.0		19,257	0	16,668	4,516	40,441	

	Total Positions	New	Deleted
Full Time Positions:	69	0	0
Part Time Positions:	81	0	0
Non Permanent Positions:	5	0	0
Positions in Component:	155	0	0
Total Component Months:	1474.2		

Total Salary Costs:	9,838,442
Total COLA:	287,821
Total Premium Pay:	1,615,890
Total Benefits:	6,378,515
Total Pre-Vacancy:	18,120,668
Minus Vacancy Adjustment of 5.43%:	(983,068)
Total Post-Vacancy:	17,137,600
Plus Lump Sum Premium Pay:	0
Personal Services Line 100:	17,137,600

PCN Funding Sources:	Pre-Vacancy	Post-Vacancy	Percent
1004 General Fund Receipts	97,565	92,272	0.54%
1039 U/A Indirect Cost Recovery	2,394,849	2,264,925	13.22%

Note: If a position is split, an asterisk (*) will appear in the Split/Count column. If the split position is also counted in the component, two asterisks (**) will appear in this column. [No valid job title] appearing in the Job Class Title indicates that the PCN has an invalid class code or invalid range for the class code effective date of this scenario.

Personal Services Expenditure Detail (1445)

Department of Transportation/Public Facilities

Scenario: FY2020 Governor Amended (15636)

Component: Northern Region Construction and CIP Support (2295)

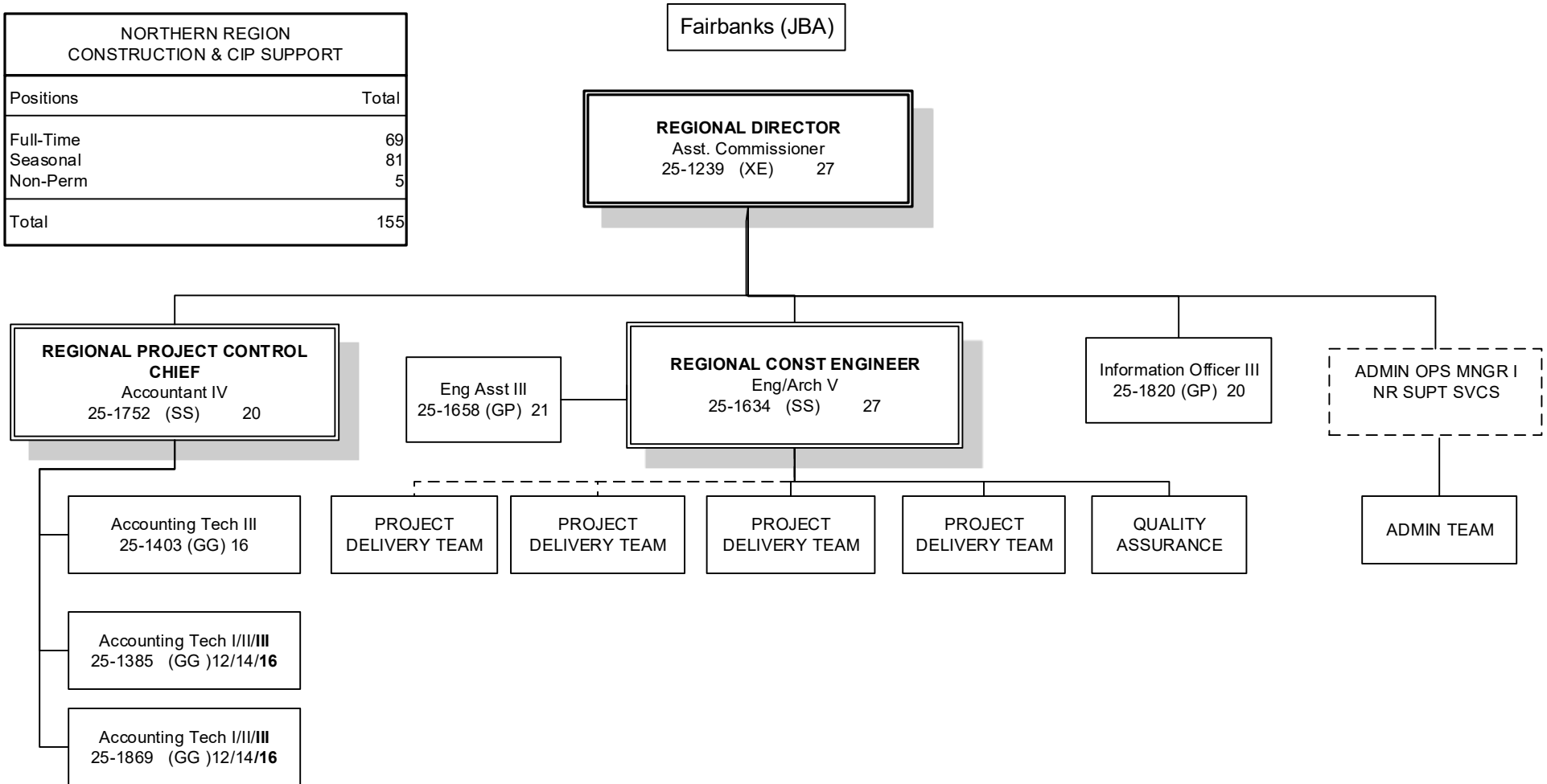
RDU: Design, Engineering and Construction (526)

PCN Funding Sources:	Pre-Vacancy	Post-Vacancy	Percent
1061 Capital Improvement Project Receipts	15,628,255	14,780,403	86.25%
Total PCN Funding:	18,120,668	17,137,600	100.00%

Note: If a position is split, an asterisk (*) will appear in the Split/Count column. If the split position is also counted in the component, two asterisks (**) will appear in this column. [No valid job title] appearing in the Job Class Title indicates that the PCN has an invalid class code or invalid range for the class code effective date of this scenario.

DEPARTMENT OF TRANSPORTATION AND PUBLIC FACILITIES
 DESIGN, ENGINEERING & CONSTRUCTION
 NORTHERN REGION CONSTRUCTION AND CIP SUPPORT (2295)
 FY2020 GOVERNOR AMENDED BUDGET

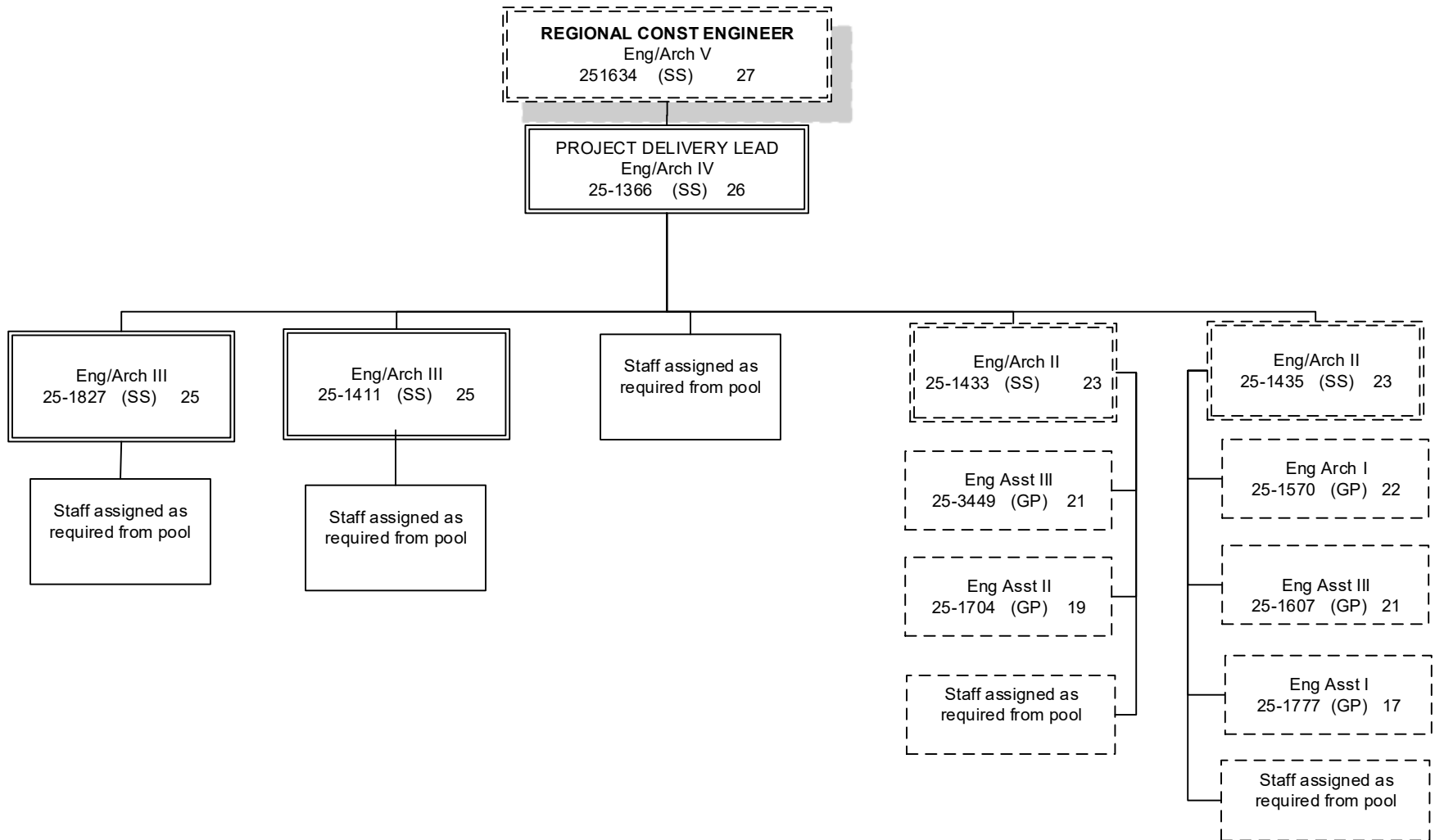
NORTHERN REGION CONSTRUCTION & CIP SUPPORT	
Positions	Total
Full-Time	69
Seasonal	81
Non-Perm	5
Total	155



Positions	Total
Full-Time	8
Seasonal	0
Non Perm	0
Total	8

Positions located in Fairbanks (JBA) unless otherwise noted.
 Dotted line positions are not budgeted in this component.

DEPARTMENT OF TRANSPORTATION AND PUBLIC FACILITIES
 DESIGN, ENGINEERING & CONSTRUCTION
 NORTHERN REGION CONSTRUCTION AND CIP SUPPORT (2295)
 FY2020 GOVERNOR AMENDED BUDGET



Positions	Total
Full-Time	3
Seasonal	0
Total	3

**Positions located in Fairbanks (JBA) unless otherwise noted.
 Dotted line positions are not budgeted in this component.**

DEPARTMENT OF TRANSPORTATION AND PUBLIC FACILITIES
 DESIGN, ENGINEERING & CONSTRUCTION
 NORTHERN REGION CONSTRUCTION AND CIP SUPPORT (2295)
 FY2020 GOVERNOR AMENDED BUDGET

NOME

PRE-CONSTRUCTION ENGINEER
 Eng/Arch V
 25-1369 (SS) 27

PROJECT DELIVERY LEAD
 Eng/Arch IV
 25-1372 (SS) 26

Eng/Arch II/III
 25-1778 (SS) 23/25

Staff assigned as
 required from pool

Eng/Arch II
 25-1444 (SS) 23

Eng/Arch III
 25-1602 (SS) 25

NOME
 Eng Assoc (GP) 21
 25-1785
 25-1795
 25-1807s
 25-1816

 Eng Asst III (GP) 21
 25-1576
 25-1780s
 25-1825s
 25-3733

 Eng Asst II (GP) 19
 25-1627s
 25-1822

 Eng Asst I/II/III (GP) 17/19/21
 25-3402

Eng Tech (SJ3) (LL) 55
 25-1482s
 25-1786s
 25-1789s
 25-1803s

 Eng Tech (SJ2) (LL) 57
 25-1487s
 25-1506s
 25-1790s
 25-1794s
 25-1819s

Eng Asst III
 25-0165 (GP) 21

Eng Asst II
 25-1622 (GP) 19

Staff assigned as
 required from pool

Eng/Arch I
 25-1531 (GP) 22

Eng Asst III
 25-1731 (GP) 21

Eng Asst II
 25-1542 (GP) 19

Staff assigned as
 required from pool

Eng Tech (J) (LL) 54
 25-1467s
 25-1668s
 25-1715s
 25-1823s

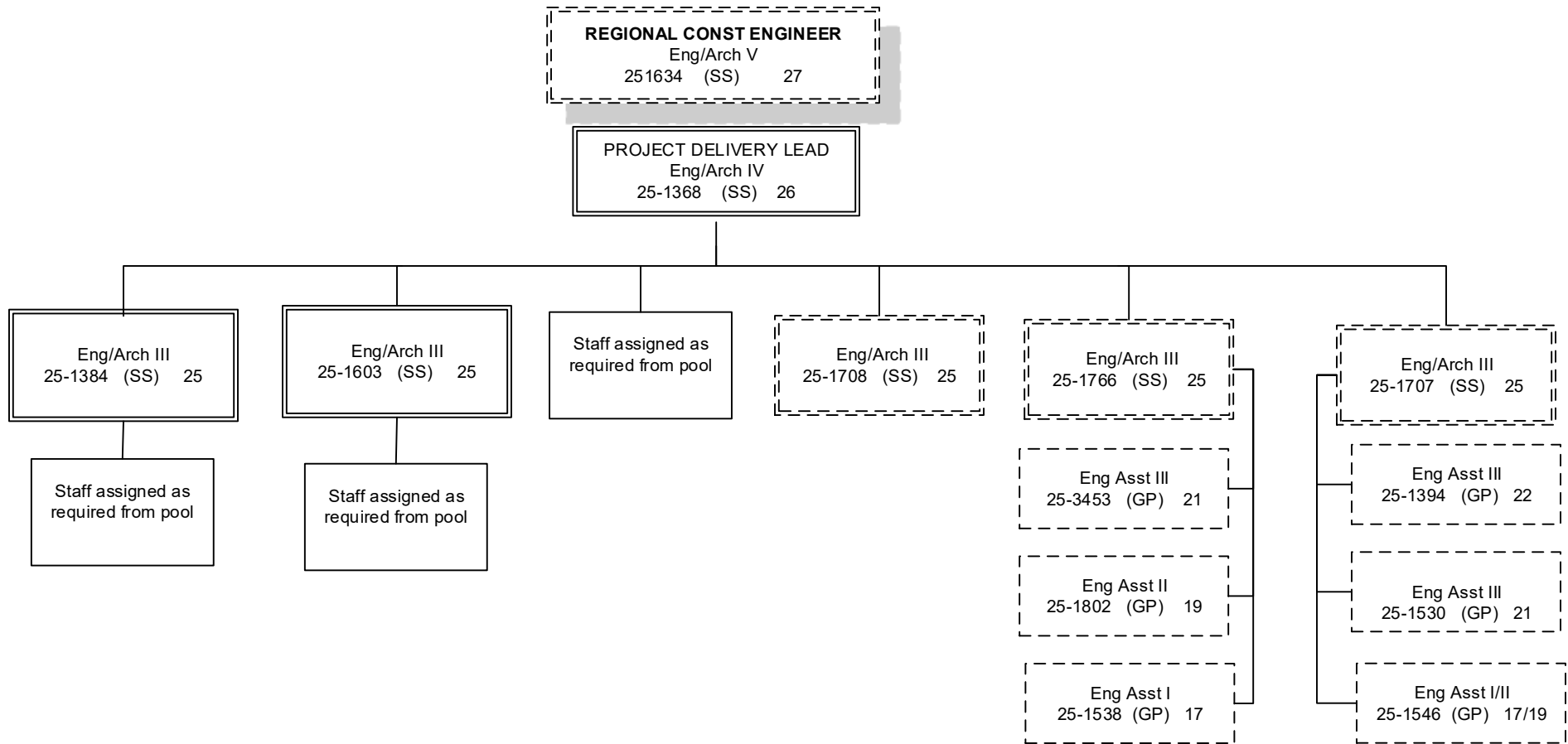
Legend
 J = Journey
 SJ2 = Sub Journey 2
 SJ3/Lead = Sub Journey 3 / Lead

Positions	Total
Full-Time	8
Seasonal	17
Total	25

Positions located in Fairbanks (JBA) unless otherwise noted.
 Dotted line positions are not budgeted in this component.

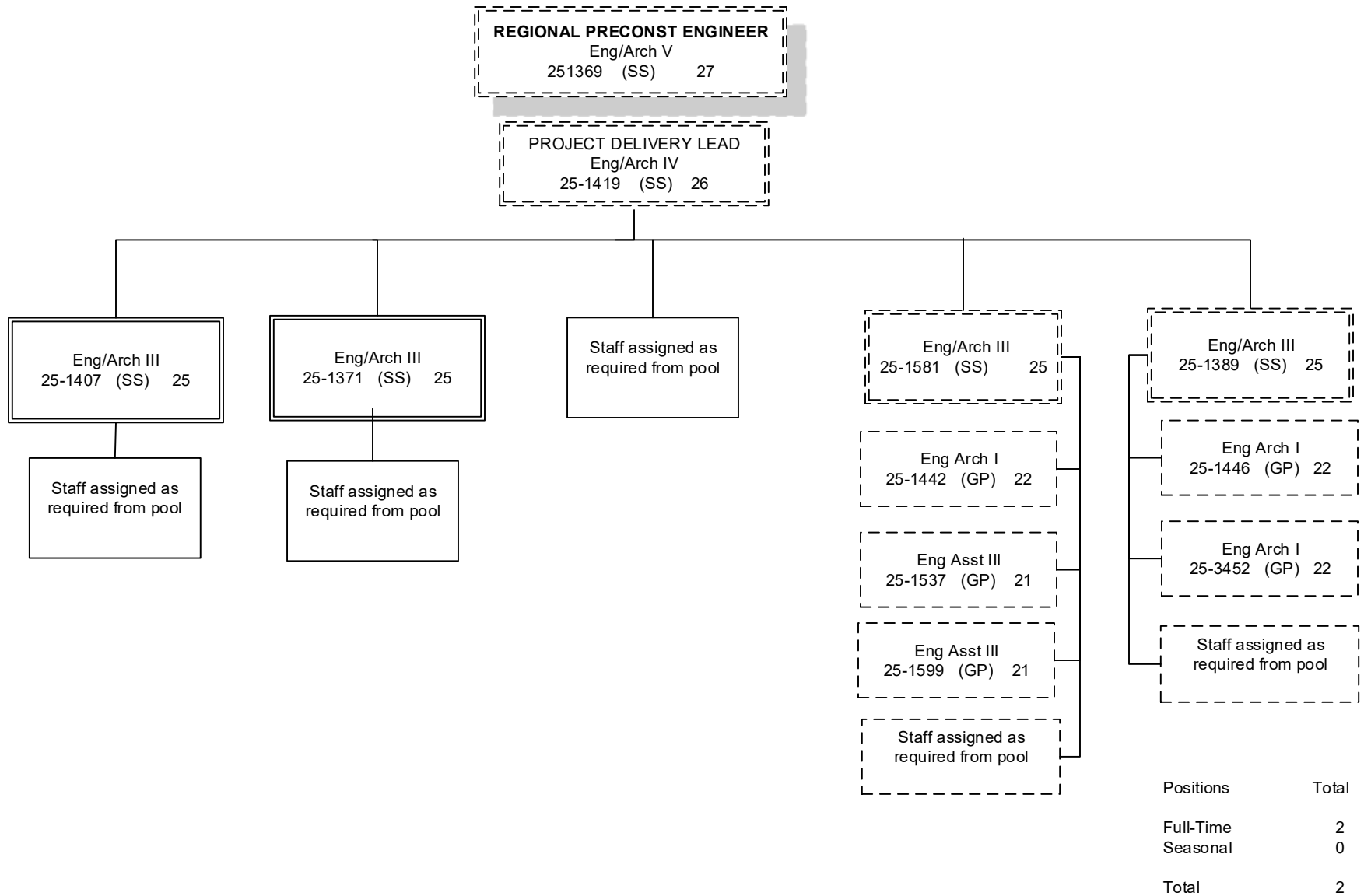
(s) = Season Position

DEPARTMENT OF TRANSPORTATION AND PUBLIC FACILITIES
 DESIGN, ENGINEERING & CONSTRUCTION
 NORTHERN REGION CONSTRUCTION AND CIP SUPPORT (2295)
 FY2020 GOVERNOR AMENDED BUDGET



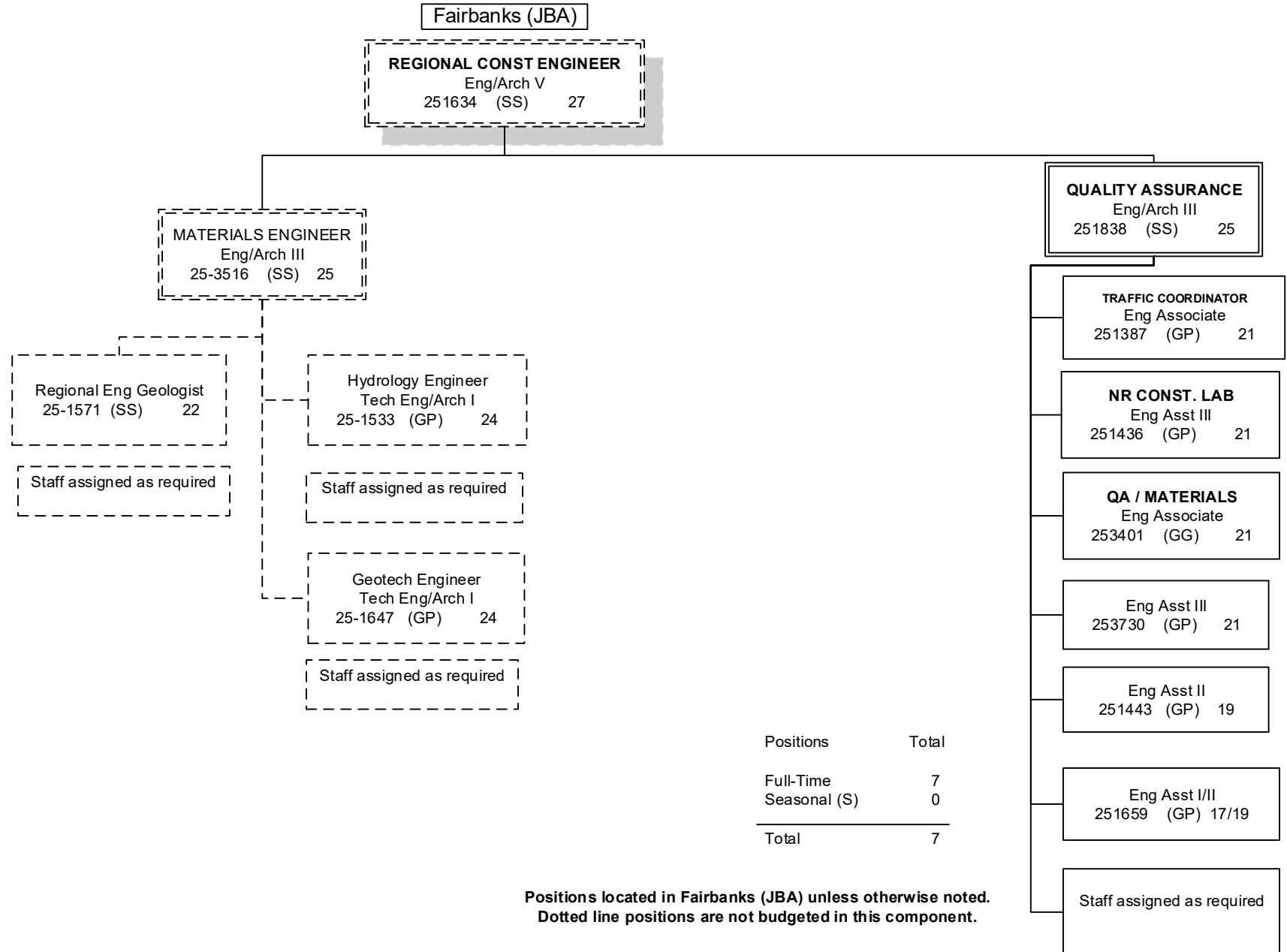
Positions	Total
Full-Time	3
Seasonal	0
Total	3

**Positions located in Fairbanks (JBA) unless otherwise noted.
 Dotted line positions are not budgeted in this component.**



**Positions located in Fairbanks (JBA) unless otherwise noted.
 Dotted line positions are not budgeted in this component.**

DEPARTMENT OF TRANSPORTATION AND PUBLIC FACILITIES
 DESIGN, ENGINEERING & CONSTRUCTION
 NORTHERN REGION CONSTRUCTION AND CIP SUPPORT (2295)
 FY2020 GOVERNOR AMENDED BUDGET



Positions	Total
Full-Time	7
Seasonal (S)	0
Total	7

**Positions located in Fairbanks (JBA) unless otherwise noted.
 Dotted line positions are not budgeted in this component.**

Fairbanks (JBA)

CONSTRUCTION ENGINEERING STAFF ASSIGNED AS REQUIRED

Eng Arch I (GP) 22 251434	Eng Asst III (GP) 21 25-1412 25-1447 25-1455(S) 25-1534(S) 25-1578 25-1632(S) 25-1639 25-1656(S) 25-1657 25-1658 25-1742(S) 25-1765 25-1781 25-1784(S) 25-1796 25-3731 25-3732	Eng Asst II (GP/GG) 19 25-1449 25-1457 25-1459 25-1541(S) 25-1548(S) 25-1557(S) 25-1579(S) 25-1580 25-1582(S) 25-1625(S) 25-1637 25-1660(S) 25-1661(S) 25-1812(S) 25-1843(S) 25-3405 25-3521 25-3525 25-3527 25-3528	Eng Asst I/II (GP) 17/19 25-1555 25-1761(S) 25-1818(S) 25-3526
Eng Associate (GP/GG) 21 25-1405 25-1431 25-1573 25-1609 25-1633 25-1705 25-1782(S) 25-1797			Eng Asst I/II/III (GP) 17/19/21 25-1473(S)
Eng Technician (J) (LL) 54 25-1464(S) 25-1465(S) 25-1469(S) 25-1474(S) 25-1479(S) 25-1490(S) 25-1524(S) 25-1667(S) 25-1748(S) 25-1758(S) 25-1852(S) 25-1862(S)	Eng Technician (SJ3) (LL) 55 25-1480(S) 25-1484(S) 25-1485(S) 25-1486(S) 25-1492(S) 25-1615(S) 25-1678(S) 25-1762(S) 25-1854(S) 25-1857(S) 25-1875(S) 25-1876(S)	Eng Technician (SJ2) (LL) 57 25-1502(S) 25-1507(S) 25-1508(S) 25-1511(S) 25-1518(S) 25-1519(S) 25-1525(S) 25-1566(S) 25-1569(S) 25-1596(S) 25-1684(S) 25-1688(S) 25-1689(S)	Maint Gen Journey (LL) 54 25-1494
			Positions Total Full-Time 32 Seasonal 64 Total 96
			Legend J = Journey SJ2 = Sub Journey 2 SJ3 = Sub Journey 3

(S) = Seasonal Position

Positions located in Fairbanks (JBA)
 unless otherwise noted.
 Dotted line positions are not budgeted in
 this component.

Fairbanks (JBA)

STAFF ASSIGNED AS REQUIRED

**NON PERMANENT
 POSITIONS
 Assigned as needed**

Eng Tech SJ I/II
 25IN1005 (LL) 59/57

Eng Tech SJ I/II
 25IN1006 (LL) 59/57

Eng Tech SJ I/II
 25IN1007 (LL) 59/57

Eng Tech SJ I/II
 25IN1008 (LL) 59/57

Eng Tech SJ I/II
 25IN1014 (LL) 59/57

Positions	Total
Full-Time	0
Seasonal	0
Non Perm	5
Total	5

Legend
J = Journey
SJ = SubJourney

**Positions located in Fairbanks (JBA) unless otherwise noted.
 Dotted line positions are not budgeted in this component.**

DEPARTMENT OF TRANSPORTATION AND PUBLIC FACILITIES
 DESIGN, ENGINEERING & CONSTRUCTION
 NORTHERN REGION CONSTRUCTION AND CIP SUPPORT (2295)
 FY2020 GOVERNOR AMENDED BUDGET

Admin Ops Mngr
 251248 (SS) 22

Admin Officer I
 251367 (SS) 17

Admin Asst II
 251732 (GG) 14

Acct Tech I
 251674 (GG) 12

Admin Asst I
 251377 (GP) 12

Admin Asst I
 251461 (GP) 12

Office Asst III NOME
 251806 (GP) 11

Office Asst II
 251757 (GP) 10

Office Asst II
 251737 (GP) 10

Office Asst II
 251768 (GP) 10

Office Assist II
 251410 (GP) 10

Office Assist II
 251767 (GP) 10

Admin Asst III
 251256 (GP) 15

Admin Assist II
 251451 (GP) 14

Admin Asst I PFT
 25-1240 (GG) 12

Admin Asst I
 251380 (GP) 12

Admin Asst I
 251756 (GP) 12

Office Assistant II
 251638 (GP) 10

Positions	Total
Full-Time	8
Seasonal	0
Total	8

Positions located in Fairbanks (JBA) unless otherwise noted.
 Dotted line positions are not budgeted in this component.